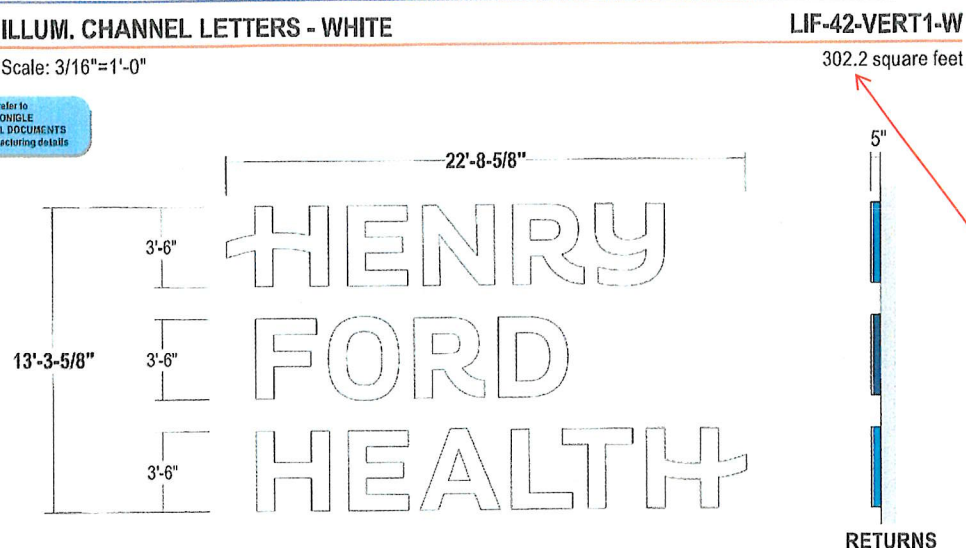


E06

ILLUM. CHANNEL LETTERS - WHITE

Scale: 3/16"=1'-0"

refer to
MONICLE
CONTROL DOCUMENTS
for manufacturing details

Hospitals are limited to 100 square feet per wall sign, up to a total of 300 total square feet for the property.

SIMULATED NIGHTTIME VIEW

HENRY
FORD
HEALTH

FACES: .177" #7328 White acrylic

TRIMCAP: 1" Std. White Jewelite

RETURNS: 'HENRY' - 5" deep .063" alum. - painted HFH Med. Blue; semi gloss finish
'FORD' - 5" deep .063" alum. - painted HFH Dk. Blue; semi gloss finish
'HEALTH' - 5" deep .063" alum. - painted HFH Lt. Blue; semi gloss finish
Interior painted with light enhancement paint

BACKS: .090" Alum. - Interior painted White

ILLUMINATION: White LED's as required by manufacturer;
REMOTE POWER SUPPLIES

WALL MATL.: Brick

INSTALL: Thru bolted flush using all thread into blocking as required
12" standard length of threaded rod will be supplied unless otherwise noted
3/8" threaded rod into blocking or Stratus approved equivalent

QUANTITY: (1) ONE LETTERSET REQUIRED

COLOR PALETTE

 Matthews MP 6425p Satin High Hide White	 Matthews MP 74601 R 211027; Semi Gloss
 Matthews MP 106752 R 213116; Semi Gloss	 Matthews MP 79491 R211027; Semi Gloss

Paint finish to be semi-gloss unless otherwise specified
All Vinyl Provided by miratec or printed to match MP colors

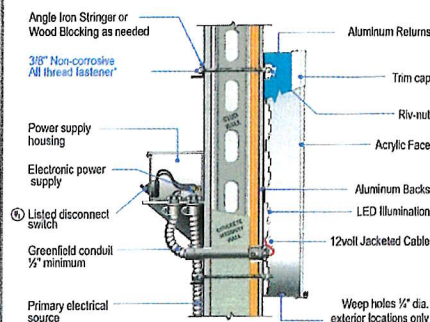
FACE LIT CHANNEL LETTERS



ALL SIGNS TO COMPLY WITH UL 48 AND WILL BE MARKED AS SUCH WITH APPROPRIATE LABORATORY LABELS.

THIS SIGN IS INTENDED TO BE INSTALLED IN ACCORDANCE WITH THE REQUIREMENTS OF ARTICLE 600 OF THE NATIONAL ELECTRICAL CODE AND/OR OTHER APPLICABLE LOCAL CODES. THIS INCLUDES PROPER GROUNDING AND BONDING OF THE SIGN.

THE LOCATION OF THE DISCONNECT SWITCH AFTER INSTALLATION SHALL COMPLY WITH ARTICLE 600.8(A) (1) OF THE NATIONAL ELECTRICAL CODE.



FACE LIT LED, REMOTE
FLUSH MOUNTED



Stratus

onestratus.com

8959 Tyler Boulevard
Mentor, Ohio 44060
888.503.1569

CLIENT:

HENRY FORD HEALTH

ORDER NUMBER:

1236932

PROJECT NUMBER:

89324

SITE NUMBER:

2110

PROJECT MANAGER:

NATHAN FRAZIER

ADDRESS:

1101 W UNIVERSITY DR
ROCHESTER, MI
48307-1863

PAGE NO.:

6

ELECTRONIC FILE NAME:

K:\ACCOUNTS\H\Henry Ford Health System\Locations\2025\MI\2110_Rochester\2110_Rochester_R4.cdr

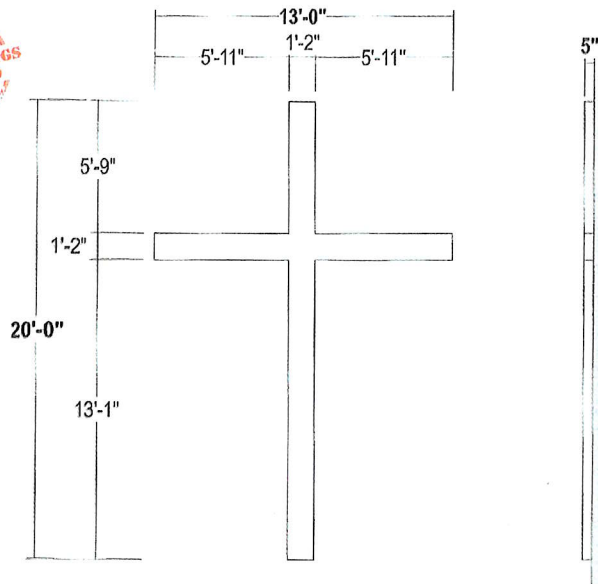
Rev #	Req #	Date/Artist	Description	Rev #	Req #	Date/Artist	Description
Original	528811	05/13/25 NS					
Rev 1	532600	05/22/25 BLAN					
Rev 2	537667	08/18/25 CR					
Rev 3	540328	07/08/25 AKS					
Rev 4	547241	08/13/25 AKS					

PRINTS ARE THE PROPERTY OF STRATUS. THIS MATERIAL SHALL NOT BE REPRODUCED, COPIED, OR OTHERWISE REPRODUCED WITHOUT THE WRITTEN CONSENT OF STRATUS.

E006B

NON-ILLUMINATED REVERSE CHANNEL LETTER CROSS - WHITE

Scale: 3/16"=1'-0"

SEAM PLACEMENT
TBV BY ENGINEERING

RCL240.n.al.f

200.0 square feet

COLOR PALETTE

Mathews MP 6425sp
Satin High Hide WhitePaint finish to be semi-gloss unless otherwise specified
All Vinyl Provided by miratec or printed to match MP colors

Hospitals are
limited to 100
square feet per
wall sign, up to
a total of 300
total square feet
for the property.

ALUM. WELDED RETURNS

ALUM. CAD CUT FACES

FABRICATED 2" x 2" ALUM. CLIPS
SECURED TO RETURN WITH
PAN HEAD SCREWSANGLE CLIPS THRU-BOLTED FLUSH TO
WALL USING ALL-THREAD INTO BLOCKING
AS REQUIRED. 12" STANDARD LENGTH
THREADED ROD SUPPLIED UNLESS
OTHERWISE NOTED
3/8" THREADED ROD INTO BLOCKING
OR STRATUS APPROVED EQUIVALENT

NON-ILLUM. FAB'D DIMENSIONAL LETTERS

CHL-05

Scale: 3/16"=1'-0"

- FACES:** .125" aluminum faces painted white
- RETURNS:** 5" deep .090" alum. returns welded to faces, all welds ground smooth, painted white
- WALL MATL.:** Brick
- INSTALL:** Pan head screws through return into 2" aluminum angle clips. Angle clips thru bolted flush to wall using all thread into blocking as required. 12" standard length of threaded rod will be supplied unless otherwise noted. 3/8" threaded rod into blocking or Stratus approved equivalent
- QUANTITY:** (1) ONE REQUIRED

ADDITIONAL FRAMING REQUIREMENTS
TBV BY ENGINEERING

Stratus

onestratus.com

8959 Tyler Boulevard
Mentor, Ohio 44060

888.503.1569

CLIENT:

HENRY FORD HEALTH

ADDRESS:

1101 W UNIVERSITY DR
ROCHESTER, MI
48307-1863

PAGE NO.

7

ORDER NUMBER:

1236932

SITE NUMBER:

2110

ELECTRONIC FILE NAME:

K:\ACCOUNTS\HF\Henry Ford Health System\Locations\2025\MI\2110_Rochester\2110_Rochester_R4.cdr

PROJECT NUMBER:

89324

PROJECT MANAGER:

NATHAN FRAZIER

Rev #	Req #	Date/Artist	Description
Original	529811	05/13/25 NS	
Rev 1	532000	05/22/25 BLAN	Added E006B
Rev 2	537667	06/18/25 CR	Revised cross proportions to more closely match Maven
Rev 3	540328	07/08/25 AKS	
Rev 4	547241	08/13/25 AKS	

Rev #	Req #	Date/Artist	Description

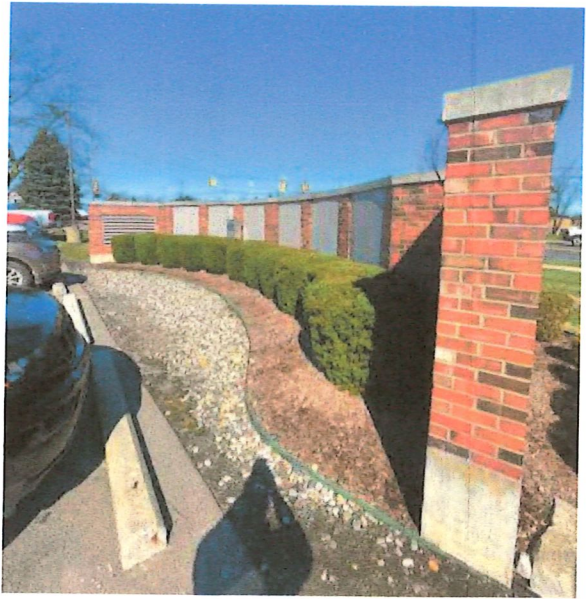
REVISIONS ARE THE EXCLUSIVE PROPERTY OF STRATUS. THIS MATERIAL SHALL NOT BE REPRODUCED, COPIED, OR OTHERWISE REPRODUCED WITHOUT THE PRIOR WRITTEN CONSENT OF STRATUS.

E15 ELEVATION @ S/F MONUMENT
Scale: 1/4"=1'-0"

LIF-18-HORZ2-B

EXISTING SIGN SF:	—
PROPOSED SIGN SF:	114.6

EXISTING CONDITIONS



Existing temporary panels to be removed;
Wall to be patched & painted as required;
Wall color match: SW 6357 Choice Cream

Rear access panels are removable
for electrical & mounting

SIGN IS BEING INSTALLED ON RADIUS WALL



±2'-7-3/4"	5'-3-1/2"
±2'-7-3/4"	

PROPOSED SIGNAGE

Stratus

onestratus.com
8959 Tyler Boulevard
Mentor, Ohio 44060
888.503.1569

CLIENT:
HENRY FORD HEALTH

ADDRESS:
1101 W UNIVERSITY DR
ROCHESTER, MI
48307-1863

PAGE NO.:
10

ORDER NUMBER:
1236932

SITE NUMBER:
2110

ELECTRONIC FILE NAME:
K:\ACCOUNTS\H\Henry Ford Health System\Locations\2025\MI\2110_Rochester\2110_Rochester_R4.cdr

PROJECT NUMBER:
89324

PROJECT MANAGER:
NATHAN FRAZIER

Rev #	Req #	Date/Artist	Description	Rev #	Req #	Date/Artist	Description
Original	529811	05/13/25 NS					
Rev 1	532600	05/22/25 BLAN					
Rev 2	537667	06/18/25 CR					
Rev 3	540328	07/08/25 AKS					
Rev 4	547241	08/13/25 AKS					

PRINTS ARE THE EXCLUSIVE PROPERTY OF STRATUS. THIS MATERIAL SHALL NOT BE USED, DUPLICATED, OR OTHERWISE REPRODUCED WITHOUT THE PRIOR WRITTEN CONSENT OF STRATUS.

E15

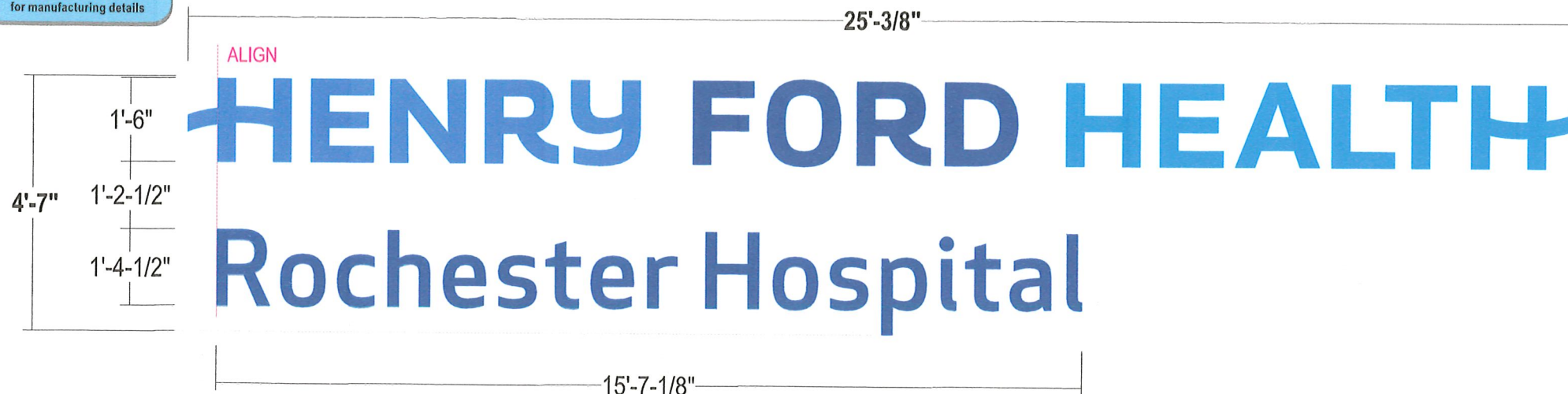
ILLUM. CHANNEL LETTERS - BLUE

Scale: 3/8"=1'-0"

LIF-18-HORZ2-B

114.6 square feet

refer to
MONIGLE
CONTROL DOCUMENTS
for manufacturing details



SIDE VIEW

ALL SIGNS TO COMPLY WITH UL 48 AND WILL BE MARKED AS SUCH WITH APPROPRIATE LABORATORY LABELS.

THIS SIGN IS INTENDED TO BE INSTALLED IN ACCORDANCE WITH THE REQUIREMENTS OF ARTICLE 600 OF THE NATIONAL ELECTRICAL CODE AND/OR OTHER APPLICABLE LOCAL CODES. THIS INCLUDES PROPER GROUNDING AND BONDING OF THE SIGN.

THE LOCATION OF THE DISCONNECT SWITCH AFTER INSTALLATION SHALL COMPLY WITH ARTICLE 600.6(A) (1) OF THE NATIONAL ELECTRIC CODE.

- FACES:** .177" #2447 White acrylic w/ surface applied 3M dual color vinyls w/ 3M 3660m clear overlaminate digitally printed Med. Blue by Miratec; *To Illuminate White at night*
- TRIMCAP:** 1" Jewelite Intense Blue painted Md. Blue to match faces
- FACES:** .177" #2447 White acrylic w/ surface applied 3M dual color vinyls w/ 3M 3660m clear overlaminate digitally printed Dk. Blue by Miratec; *To Illuminate White at night*
- TRIMCAP:** 1" Jewelite Blue painted Dk. Blue to match faces
- FACES:** .177" #2447 White acrylic w/ surface applied 3M dual color vinyls w/ 3M 3660m clear overlaminate digitally printed Lt. Blue by Miratec; *To Illuminate White at night*
- TRIMCAP:** 1" Jewelite Intense Blue painted Lt. Blue to match faces
- FACILITY FACES:** .177" #2447 White acrylic w/ surface applied 3M dual color vinyls w/ 3M 3660m clear overlaminate digitally printed Dk. Blue by Miratec; *To Illuminate White at night*
- TRIMCAP:** 1" Jewelite Blue painted Dk. Blue to match faces
- RETURNS:** 3" deep .050" alum. - painted HFH White; semi gloss finish interior painted with light enhancement paint
- BACKS:** .063" Alum. - Interior painted White
- ILLUMINATION:** White LED's as required by manufacturer; **REMOTE POWER SUPPLIES**
- WALL MATL:** EIFS
- INSTALL:** Thru bolted flush using all thread into blocking as required; 12" standard length of threaded rod will be supplied unless otherwise noted; 3/8" threaded rod into blocking or Stratus approved equivalent. Compression sleeves required to avoid crushing wall & achieve max tensioning.
- QUANTITY:** (1) ONE LETTERSET REQUIRED

SIGN IS BEING INSTALLED ON RADIUS WALL

COLOR PALETTE

Matthews MP 106752 R 213116; Semi Gloss	Digitally printed by Miratec to match PMS 2387
Matthews MP 74601 R 211027; Semi Gloss	Digitally printed by Miratec to match PMS 2748
Matthews MP79491 R211027; Semi Gloss	Digitally printed by Miratec to match PMS 2925
Matthews MP 6425sp Satin High Hide White Semi-Gloss	

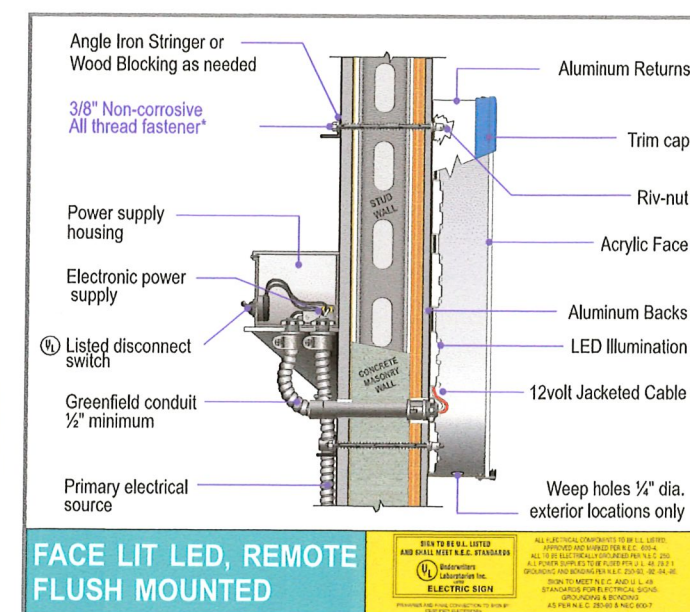
Paint finish to be semi-gloss unless otherwise specified
All Vinyl Provided by miratec or printed to match MP colors

FACE LIT CHANNEL LETTERS



SIMULATED NIGHTTIME VIEW

HENRY FORD HEALTH
Rochester Hospital



FACE LIT LED, REMOTE
FLUSH MOUNTED



Stratus

onestratus.com
8959 Tyler Boulevard
Mentor, Ohio 44060
888.503.1569

CLIENT:
HENRY FORD HEALTH

ADDRESS:
1101 W UNIVERSITY DR
ROCHESTER, MI
48307-1863

PAGE NO.:
11

ORDER NUMBER:
1236932

SITE NUMBER:
2110

ELECTRONIC FILE NAME:
K:\ACCOUNTS\H\Henry Ford Health System\Locations\2025\MI\2110_Rochester\2110_Rochester_R4.cdr

PROJECT NUMBER:
89324

PROJECT MANAGER:
NATHAN FRAZIER

Rev #	Req #	Date/Artist	Description	Rev #	Req #	Date/Artist	Description
Original	529811	05/13/25 NS					
Rev 1	532600	05/22/25 BLAN					
Rev 2	537667	06/18/25 CR					
Rev 3	540328	07/08/25 AKS					
Rev 4	547241	08/13/25 AKS					

PRINTS ARE THE EXCLUSIVE PROPERTY OF STRATUS. THIS MATERIAL SHALL NOT BE USED, DUPLICATED, OR OTHERWISE REPRODUCED WITHOUT THE PRIOR WRITTEN CONSENT OF STRATUS.

Sign was updated to the current HFH brand standards or removed during the temporary sign phase



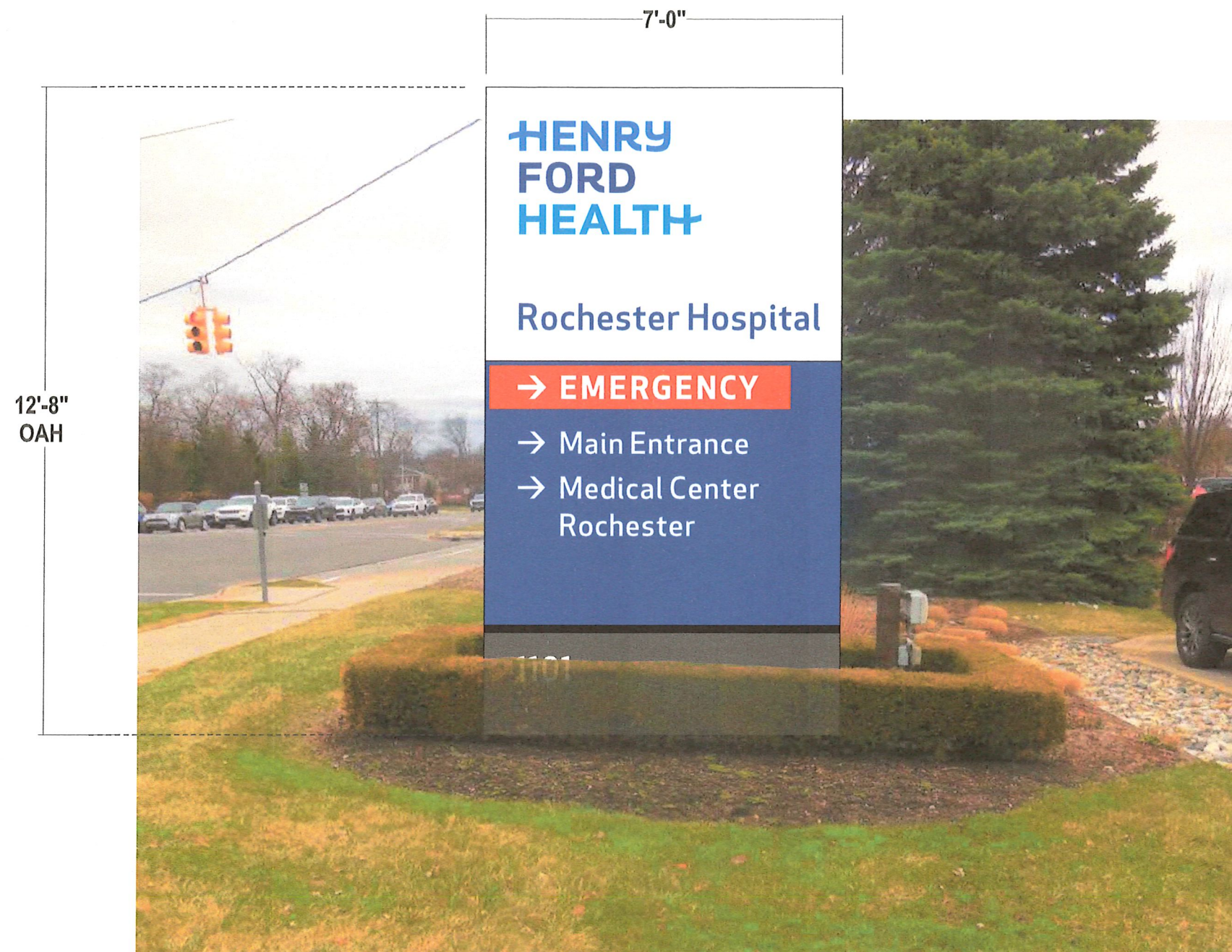
Rev #	Req #	Date/Artist	Description	Rev #	Req #	Date/Artist	Description
Original	529811	05/13/25 NS					
Rev 1	532600	05/22/25 BLAN					
Rev 2	537667	06/18/25 CR					
Rev 3	540328	07/08/25 AKS					
Rev 4	547241	08/13/25 AKS					

E14 ELEVATION @ D/F ILLUM MONUMENT
Scale: 3/8"=1'-0"

PE-12-IL

EXISTING SIGN SF:	44.2
PROPOSED SIGN SF:	88.7

EXISTING CONDITIONS



Monument
sign cannot
exceed 7 feet
in height.



Existing 6'-9-1/2" x 6'-6" monument
to be removed & replaced;
Install far enough away to avoid existing footer

PROPOSED SIGNAGE

Stratus

onestratus.com
8959 Tyler Boulevard
Mentor, Ohio 44060
888.503.1569

CLIENT:
HENRY FORD HEALTH

ADDRESS:
1101 W UNIVERSITY DR
ROCHESTER, MI
48307-1863

PAGE NO.:
15

ORDER NUMBER:
1236932

SITE NUMBER:
2110

ELECTRONIC FILE NAME:
K:\ACCOUNTS\H\Henry Ford Health System\Locations\2025\MI\2110_Rochester\2110_Rochester_R4.cdr

PROJECT NUMBER:
89324

PROJECT MANAGER:
NATHAN FRAZIER

Rev #	Req #	Date/Artist	Description	Rev #	Req #	Date/Artist	Description
Original	529811	05/13/25 NS					
Rev 1	532600	05/22/25 BLAN					
Rev 2	537667	06/18/25 CR					
Rev 3	540328	07/08/25 AKS					
Rev 4	547241	08/13/25 AKS					

PRINTS ARE THE EXCLUSIVE PROPERTY OF STRATUS. THIS MATERIAL SHALL NOT BE USED, DUPLICATED, OR OTHERWISE REPRODUCED WITHOUT THE PRIOR WRITTEN CONSENT OF STRATUS.

E14

D/F ILLUMINATED EMERGENCY PYLON SIGN

Scale: 3/8"=1'-0"

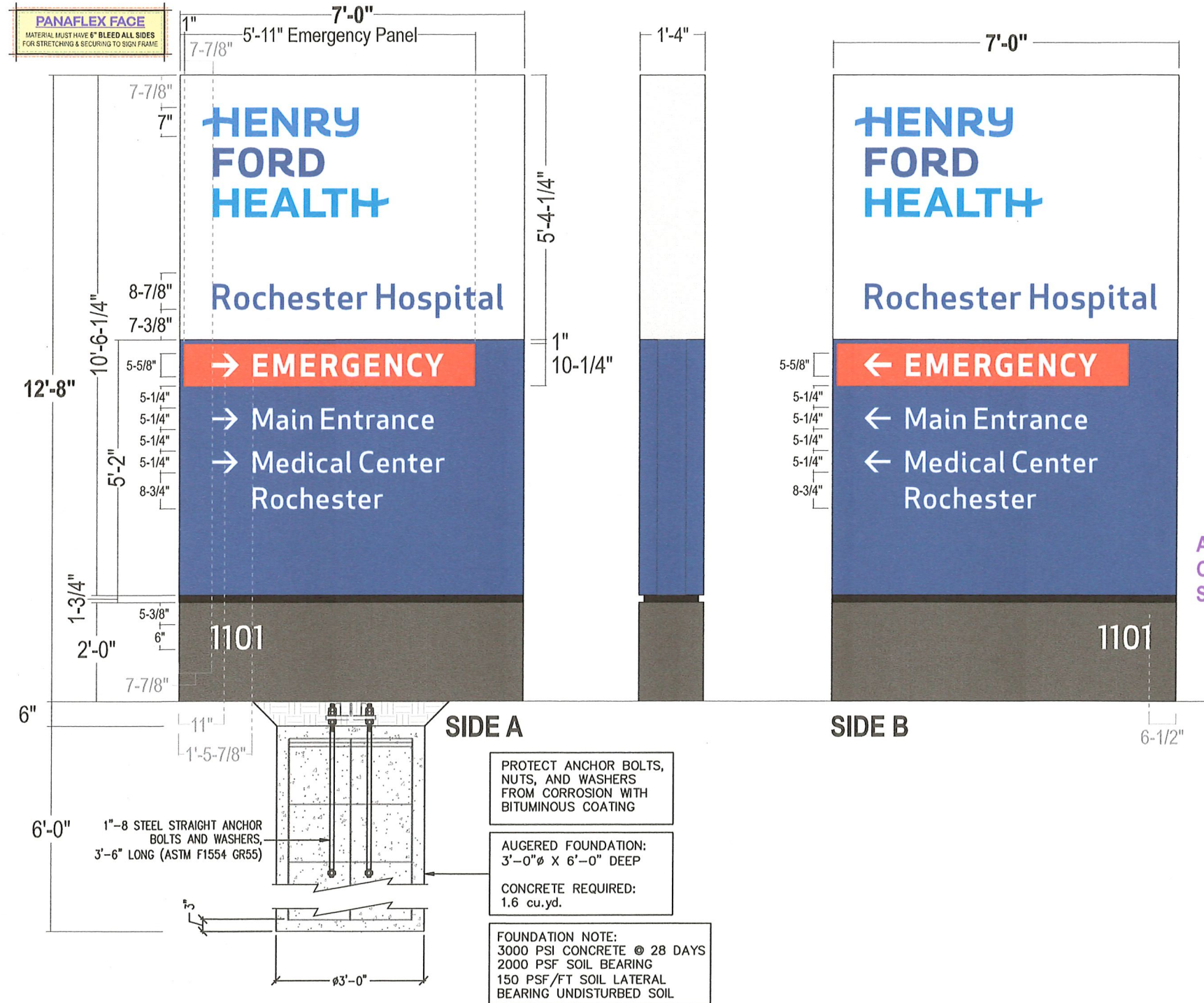
PE-12-IL

88.7 square feet

See Engineering Drawing For all Details

refer to
MONIGLE
CONTROL DOCUMENTS
for manufacturing details

refer to
PRODUCTION SHOP DRAWING
HFS0036F
for manufacturing details



- CABINET:** 16" deep aluminum angle sign frame w/ Bleed retainers & .125" alum. skin; Painted to match colors shown
- FACES:**
Upper Faces: 3M Panagraphics III Flexible substrate w/ digitally printed graphics to match colors shown; *Seamless material shall be used where possible*
Emergency Panel: .25" white trans acrylic routed back from face at perimeter by 1/8" and flushed into routed window; surface applied trans red reversed out vinyl overlay; 1" Dk. Blue painted border around perimeter of emergency panel face *opaque the returns and shoulder to prevent light leaks*
Directional Copy: .125" Pan formed Aluminum faces painted HFH dk. blue - graphics Routed from face; 1/4" thick white push thru acrylic (flush w/ face); Second surface applied diffuser film on all graphics
- ILLUM.:** White LEDs as required by manufacturer
POWER SUPPLIES HOUSED IN CABINET
- REVEAL:** Alum. Construction; Painted to match HFH Black semi-gloss finish
- BASE:** .125" fab'd alum. construction; painted HFH Dk. Gray - semi-gloss finish
One side to be removable for install access
- ADDRESS:** Surface applied reflective white vinyl graphics
- INSTALL:** Cabinet to have internal steel and will secure to concrete foundation using base plate 6" below grade - *See Engineering for all details*
- QUANTITY:** (1) ONE D/F PYLON SIGN REQUIRED

ADDRESS NUMERALS
ORIENTED TOWARD
STREET SIDE

COLOR PALETTE			
	Matthews MP 6425sp Satin High Hide White; Semi Gloss		Digitally printed to match Pantone 2387
	Matthews MP 74601 R 211027; Semi Gloss		Digitally printed to match Pantone 2748
	Matthews MP 18243 R 212556; Semi Gloss		Digitally printed to match Pantone 2925
	Matthews MP 30914 Semi Gloss		3M 3630-43 Translucent Red
			3M 680-10 White Reflective

Paint finish to be semi-gloss unless otherwise specified
All Vinyl Provided by miratec or printed to match MP colors

SIMULATED NIGHTTIME VIEW



Stratus

onstratus.com
8959 Tyler Boulevard
Mentor, Ohio 44060
888.503.1569

CLIENT:
HENRY FORD HEALTH

ADDRESS:
1101 W UNIVERSITY DR
ROCHESTER, MI
48307-1863

PAGE NO.:

16

ORDER NUMBER:
1236932

SITE NUMBER:
2110

ELECTRONIC FILE NAME:
K:\ACCOUNTS\HH\Henry Ford Health System\Locations\2025\MI\2110_Rochester\2110_Rochester_R4.cdr

PROJECT NUMBER:
89324

PROJECT MANAGER:
NATHAN FRAZIER

Rev #	Req #	Date/Artist	Description	Rev #	Req #	Date/Artist	Description
Original	529811	05/13/25 NS					
Rev 1	532600	05/22/25 BLAN					
Rev 2	537667	06/18/25 CR					
Rev 3	540328	07/08/25 AKS					
Rev 4	547241	08/13/25 AKS					

PRINTS ARE THE EXCLUSIVE PROPERTY OF STRATUS. THIS MATERIAL SHALL NOT BE USED, DUPLICATED, OR OTHERWISE REPRODUCED WITHOUT THE PRIOR WRITTEN CONSENT OF STRATUS.

Remove support pole to grade and cap. Remove, dispose and cap off to code all existing electrical components / hardware previously connected to existing signage. Restore ground material and clean area of all debris.



Rev #	Req #	Date/Artist	Description	Rev #	Req #	Date/Artist	Description
Original	529811	05/13/25 NS					
Rev 1	532600	05/22/25 BLAN					
Rev 2	537667	06/18/25 CR					
Rev 3	540328	07/08/25 AKS					
Rev 4	547241	08/13/25 AKS					

EXISTING SIGN SF:	44.2
PROPOSED SIGN SF:	88.7



Sign cannot exceed 7 feet in height.



Existing 6'-9-1/2" x 6'-6" monument to be removed & replaced; Install far enough away to avoid existing footer

PROPOSED SIGNAGE



Stratus

onestratus.com
8959 Tyler Boulevard
Mentor, Ohio 44060
888.503.1569

CLIENT:
HENRY FORD HEALTH

ADDRESS:
1101 W UNIVERSITY DR
ROCHESTER, MI
48307-1863

PAGE NO.:
18

ORDER NUMBER:
1236932

SITE NUMBER:
2110

ELECTRONIC FILE NAME:
K:\ACCOUNTS\H\Henry Ford Health System\Locations\2025\MI\2110_Rochester\2110_Rochester_R4.cdr

PROJECT NUMBER:
89324

PROJECT MANAGER:
NATHAN FRAZIER

Rev #	Req #	Date/Artist	Description	Rev #	Req #	Date/Artist	Description
Original	529811	05/13/25 NS					
Rev 1	532600	05/22/25 BLAN					
Rev 2	537667	06/18/25 CR					
Rev 3	540328	07/08/25 AKS					
Rev 4	547241	08/13/25 AKS					

PRINTS ARE THE EXCLUSIVE PROPERTY OF STRATUS. THIS MATERIAL SHALL NOT BE USED, DUPLICATED, OR OTHERWISE REPRODUCED WITHOUT THE PRIOR WRITTEN CONSENT OF STRATUS.

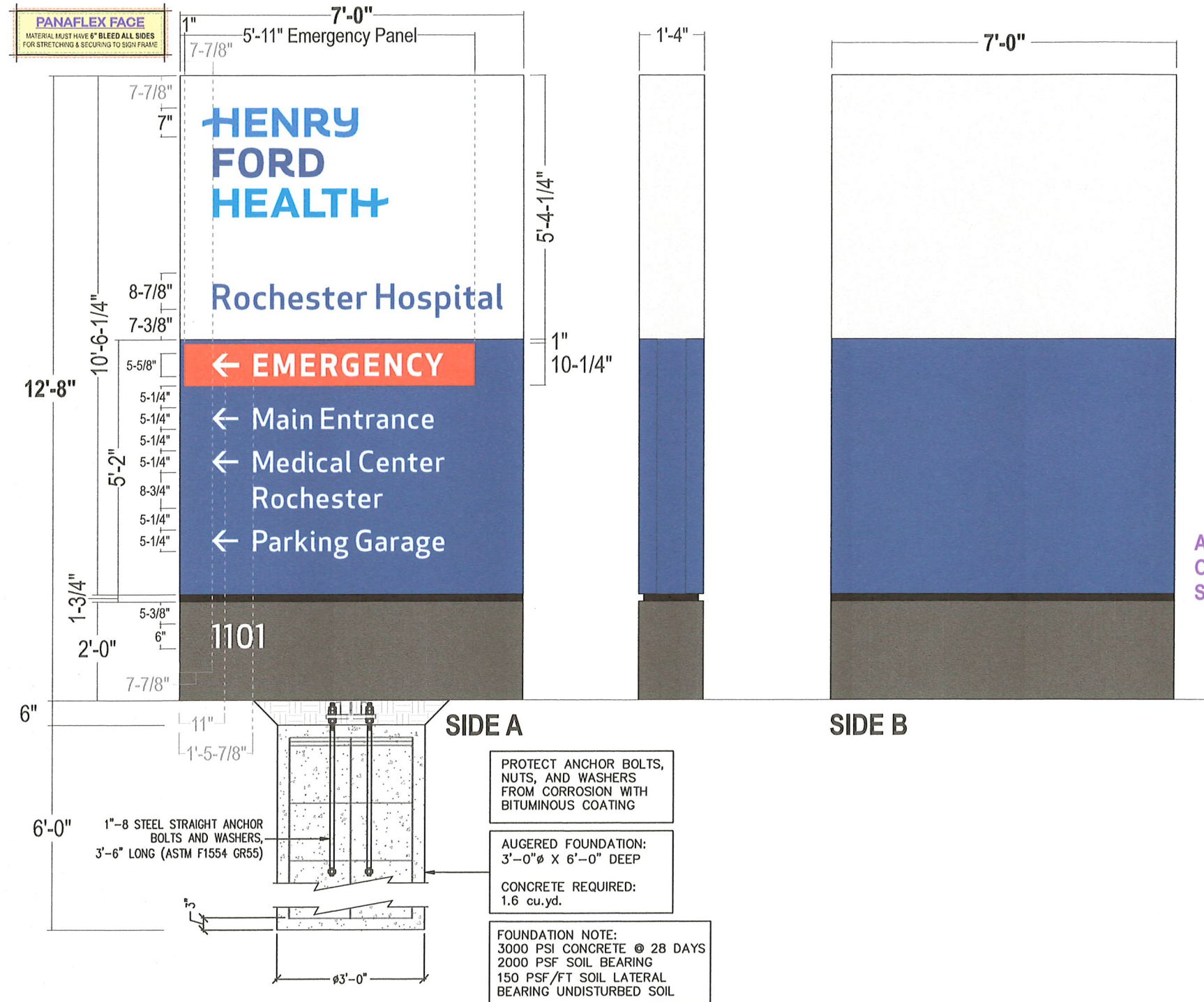
E27 S/F ILLUMINATED EMERGENCY PYLON SIGN

PE-12-IL
88.7 square feet

See Engineering Drawing For all Details

refer to
MONIGLE
CONTROL DOCUMENTS
for manufacturing details

refer to
PRODUCTION SHOP DRAWING
HFS0036F
for manufacturing details



- CABINET:** 16" deep aluminum angle sign frame w/ Bleed retainers & .125" alum. skin; Painted to match colors shown
- FACES:**
Upper Faces: 3M Panagraphics III Flexible substrate w/ digitally printed graphics to match colors shown; *Seamless material shall be used where possible*
Emergency Panel: .25" white trans acrylic routed back from face at perimeter by 1/8" and flushed into routed window; surface applied trans red reversed out vinyl overlay; 1" Dk. Blue painted border around perimeter of emergency panel face *opaque the returns and shoulder to prevent light leaks*
Directional Copy: .125" Pan formed Aluminum faces painted HFH dk. blue - graphics Routed from face; 1/4" thick white push thru acrylic (flush w/ face); Second surface applied diffuser film on all graphics
- ILLUM.:** White LEDs as required by manufacturer
POWER SUPPLIES HOUSED IN CABINET
- REVEAL:** Alum. Construction; Painted to match HFH Black semi-gloss finish
- BASE:** .125" fab'd alum. construction; painted HFH Dk. Gray - semi-gloss finish
One side to be removable for install access
- ADDRESS:** Surface applied reflective white vinyl graphics
- INSTALL:** Cabinet to have internal steel and will secure to concrete foundation using base plate 6" below grade - *See Engineering for all details*
- QUANTITY:** (1) ONE D/F PYLON SIGN REQUIRED

ADDRESS NUMERALS
ORIENTED TOWARD
STREET SIDE

COLOR PALETTE

Matthews MP 6425sp Satin High Hide White; Semi Gloss	Digitally printed to match Pantone 2387
Matthews MP 74601 R 211027; Semi Gloss	Digitally printed to match Pantone 2748
Matthews MP 18243 R 212556; Semi Gloss	Digitally printed to match Pantone 2925
Matthews MP 30914 Semi Gloss	3M 3630-43 Translucent Red
	3M 680-10 White Reflective

Paint finish to be semi-gloss unless otherwise specified
All Vinyl Provided by miratec or printed to match MP colors

SIMULATED NIGHTTIME VIEW



Stratus

onstratus.com
8959 Tyler Boulevard
Mentor, Ohio 44060
888.503.1569

CLIENT:
HENRY FORD HEALTH

ADDRESS:
1101 W UNIVERSITY DR
ROCHESTER, MI
48307-1863

PAGE NO.:
19

ORDER NUMBER:
1236932

SITE NUMBER:
2110

ELECTRONIC FILE NAME:
K:\ACCOUNTS\Henry Ford Health System\Locations\2025\MI\2110_Rochester\2110_Rochester_R4.cdr

PROJECT NUMBER:
89324

PROJECT MANAGER:
NATHAN FRAZIER

Rev #	Req #	Date/Artist	Description	Rev #	Req #	Date/Artist	Description
Original	529811	05/13/25 NS					
Rev 1	532600	05/22/25 BLAN					
Rev 2	537667	06/18/25 CR					
Rev 3	540328	07/08/25 AKS					
Rev 4	547241	08/13/25 AKS					

PRINTS ARE THE EXCLUSIVE PROPERTY OF STRATUS. THIS MATERIAL SHALL NOT BE USED, DUPLICATED, OR OTHERWISE REPRODUCED WITHOUT THE PRIOR WRITTEN CONSENT OF STRATUS.

E28

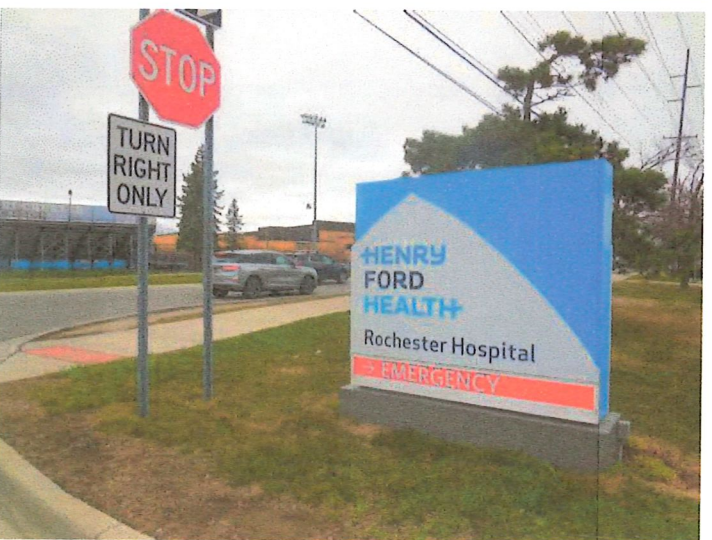
ELEVATION @ D/F ILLUM PYLON

Scale: 3/8"=1'-0"

PE-12-IL

EXISTING SIGN SF:	44.2
PROPOSED SIGN SF:	88.7

EXISTING CONDITIONS



Existing 6'-9-1/2" x 6'-6" monument
to be removed & replaced
Install far enough away to avoid existing footer

Monument
sign cannot
exceed 7 feet
in height.



PROPOSED SIGNAGE

Stratus

onestratus.com

8959 Tyler Boulevard
Mentor, Ohio 44060

888.503.1569

CLIENT:
HENRY FORD HEALTH

ADDRESS:
1101 W UNIVERSITY DR
ROCHESTER, MI
48307-1863

PAGE NO.:
20

ORDER NUMBER:
1236932

SITE NUMBER:
2110

ELECTRONIC FILE NAME:
K:\ACCOUNTS\H\Henry Ford Health System\Locations\2025\MI\2110_Rochester\2110_Rochester_R4.cdr

PROJECT NUMBER:
89324

PROJECT MANAGER:
NATHAN FRAZIER

Rev #	Req #	Date/Artist	Description	Rev #	Req #	Date/Artist	Description
Original	529811	05/13/25 NS					
Rev 1	532600	05/22/25 BLAN					
Rev 2	537667	06/18/25 CR					
Rev 3	540328	07/08/25 AKS					
Rev 4	547241	08/13/25 AKS					

PRINTS ARE THE EXCLUSIVE PROPERTY OF STRATUS. THIS MATERIAL SHALL NOT BE USED, DUPLICATED, OR OTHERWISE REPRODUCED WITHOUT THE PRIOR WRITTEN CONSENT OF STRATUS.

E28

D/F ILLUMINATED EMERGENCY PYLON SIGN

Scale: 3/8"=1'-0"

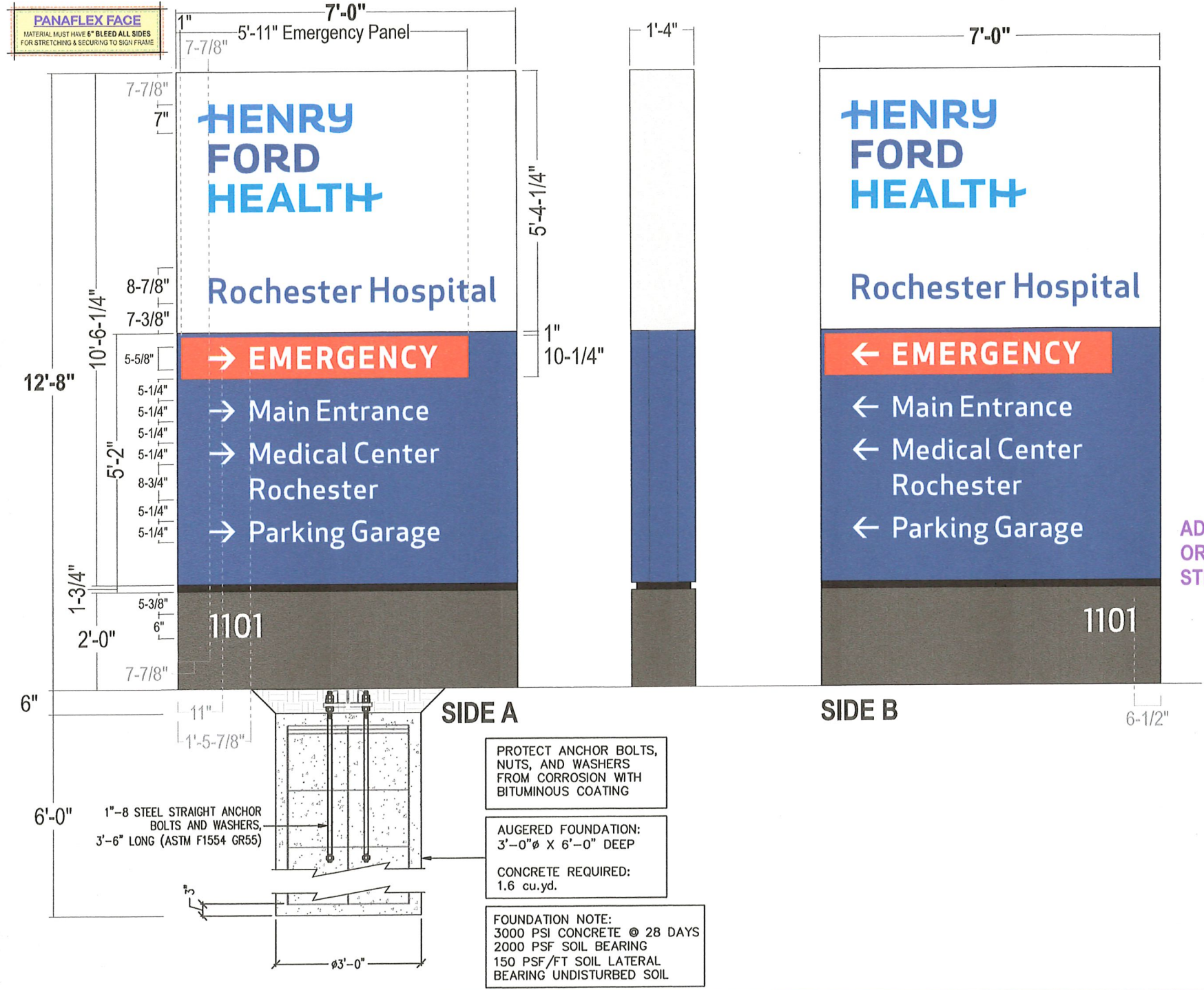
PE-12-IL

88.7 square feet

See Engineering Drawing For all Details

refer to
MONIGLE
CONTROL DOCUMENTS
for manufacturing details

refer to
PRODUCTION SHOP DRAWING
HFS0036F
for manufacturing details



- CABINET:** 16" deep aluminum angle sign frame w/ Bleed retainers & .125" alum. skin; Painted to match colors shown
- FACES:**
Upper Faces: 3M Panagraphics III Flexible substrate w/ digitally printed graphics to match colors shown; *Seamless material shall be used where possible*
Emergency Panel: .25" white trans acrylic routed back from face at perimeter by 1/8" and flushed into routed window; surface applied trans red reversed out vinyl overlay; 1" Dk. Blue painted border around perimeter of emergency panel face *opaque the returns and shoulder to prevent light leaks*
Directional Copy: .125" Pan formed Aluminum faces painted HFH dk. blue - graphics Routed from face; 1/4" thick white push thru acrylic (flush w/ face); Second surface applied diffuser film on all graphics
- ILLUM.:** White LEDs as required by manufacturer
POWER SUPPLIES HOUSED IN CABINET
- REVEAL:** Alum. Construction; Painted to match HFH Black semi-gloss finish
- BASE:** .125" fab'd alum. construction; painted HFH Dk. Gray - semi-gloss finish
One side to be removable for install access
- ADDRESS:** Surface applied reflective white vinyl graphics
- INSTALL:** Cabinet to have internal steel and will secure to concrete foundation using base plate 6" below grade - *See Engineering for all details*
- QUANTITY:** (1) ONE D/F PYLON SIGN REQUIRED

ADDRESS NUMERALS
ORIENTED TOWARD
STREET SIDE

COLOR PALETTE

Matthews MP 6425sp Satin High Hide White; Semi Gloss	Digitally printed to match Pantone 2387
Matthews MP 74601 R 211027; Semi Gloss	Digitally printed to match Pantone 2748
Matthews MP 18243 R 212556; Semi Gloss	Digitally printed to match Pantone 2925
Matthews MP 30914 Semi Gloss	3M 3630-43 Translucent Red
	3M 680-10 White Reflective

Paint finish to be semi-gloss unless otherwise specified
All Vinyl Provided by miratec or printed to match MP colors

SIMULATED NIGHTTIME VIEW



Stratus
onstratus.com
8959 Tyler Boulevard
Mentor, Ohio 44060
888.503.1569

CLIENT: HENRY FORD HEALTH	ORDER NUMBER: 1236932	PROJECT NUMBER: 89324
ADDRESS: 1101 W UNIVERSITY DR ROCHESTER, MI 48307-1863	SITE NUMBER: 2110	PROJECT MANAGER: NATHAN FRAZIER
PAGE NO.: 21	ELECTRONIC FILE NAME: K:\ACCOUNTS\H\Henry Ford Health System\Locations\2025\MI\2110_Rochester\2110_Rochester_R4.cdr	

Rev #	Req #	Date/Artist	Description	Rev #	Req #	Date/Artist	Description
Original	529811	05/13/25 NS					
Rev 1	532600	05/22/25 BLAN					
Rev 2	537667	06/18/25 CR					
Rev 3	540328	07/08/25 AKS					
Rev 4	547241	08/13/25 AKS					

PRINTS ARE THE EXCLUSIVE PROPERTY OF STRATUS. THIS MATERIAL SHALL NOT BE USED, DUPLICATED, OR OTHERWISE REPRODUCED WITHOUT THE PRIOR WRITTEN CONSENT OF STRATUS.

E33 S/F NON-ILLUMINATED BUILDING ID - NON-BRANDED

Scale: 1"=1'-0"

ID-30-NIL

4.6 square feet

EXISTING SIGN SF:	±11.3
PROPOSED SIGN SF:	4.6

PROPOSED

Scaled Proportionally

refer to
MONIGLE
CONTROL DOCUMENTS
for manufacturing details

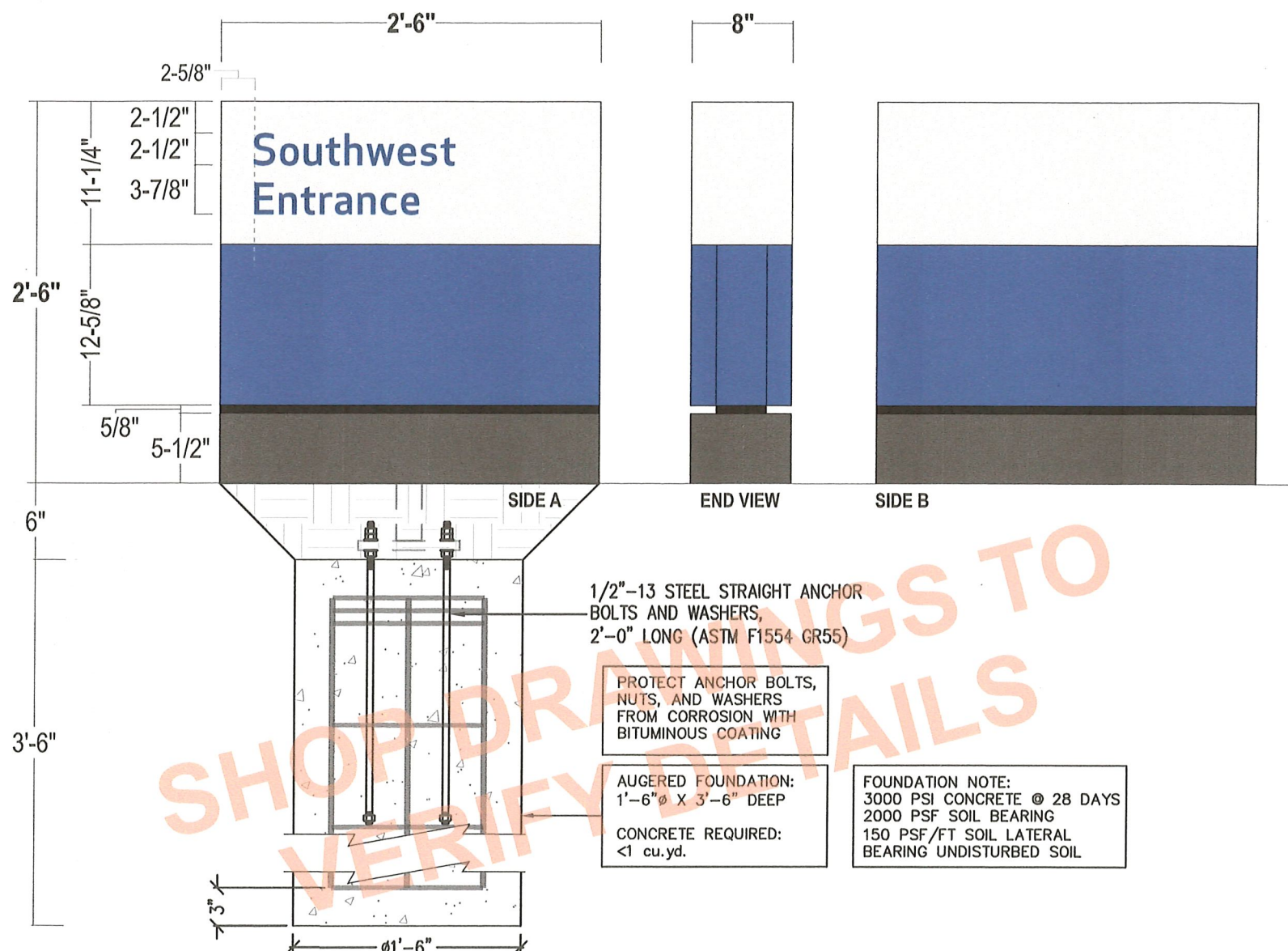
NEW SIGN TYPE
ADDED TO
PROGRAM



EXISTING CONDITIONS



Existing ±8'-0" x ±1'-5" sign
to be removed & replaced



- CABINET:** 8" deep aluminum angle sign frame w/ .125 alum. skin; Painted HFH White & HFH Dk. Blue, semi-gloss finish
- FACES:** .125" Pan formed Aluminum faces
all painted HFH White & HFH Dk. Blue, semi-gloss finish
Attached w/ stainless steel piano hinge for internal access
- GRAPHICS:** Surface applied Reflective vinyl graphics to match colors shown
- REVEAL:** Alum. Construction; Painted to match HFH Black, semi-gloss finish
- BASE:** .125" fab'd alum. construction; painted HFH Dk. Gray, semi-gloss finish
One side to be removable for install access
- INSTALL:** Cabinet to have internal steel and will secure to concrete foundation using base plate 6" below grade - *See Engineering for all details*
- QUANTITY:** (1) ONE REQUIRED

COLOR PALETTE

Digitally printed by Miratec to match PMS 2748	Matthews MP 74601 R 211027; Semi-Gloss	Matthews MP 30914; Semi-Gloss
Matthews MP 6425sp Satin High Hide White	Matthews MP 18243 R 212556; Semi-Gloss	

Paint finish to be semi-gloss unless otherwise specified

Stratus

onstratus.com
8959 Tyler Boulevard
Mentor, Ohio 44060
888.503.1569

CLIENT:
HENRY FORD HEALTH

ADDRESS:
1101 W UNIVERSITY DR
ROCHESTER, MI
48307-1863

PAGE NO.:
22

ORDER NUMBER:
1236932

SITE NUMBER:
2110

ELECTRONIC FILE NAME:
K:\ACCOUNTS\H\Henry Ford Health System\Locations\2025\MI\2110_Rochester\2110_Rochester_R4.cdr

PROJECT NUMBER:
89324

PROJECT MANAGER:
NATHAN FRAZIER

Rev #	Req #	Date/Artist	Description	Rev #	Req #	Date/Artist	Description
Original	529811	05/13/25 NS					
Rev 1	532600	05/22/25 BLAN					
Rev 2	537667	06/18/25 CR					
Rev 3	540328	07/08/25 AKS					
Rev 4	547241	08/13/25 AKS					

PRINTS ARE THE EXCLUSIVE PROPERTY OF STRATUS. THIS MATERIAL SHALL NOT BE USED, DUPLICATED, OR OTHERWISE REPRODUCED WITHOUT THE PRIOR WRITTEN CONSENT OF STRATUS.

E39a S/F NON-ILLUMINATED BUILDING ID - NON-BRANDED

Scale: 1"=1'-0"

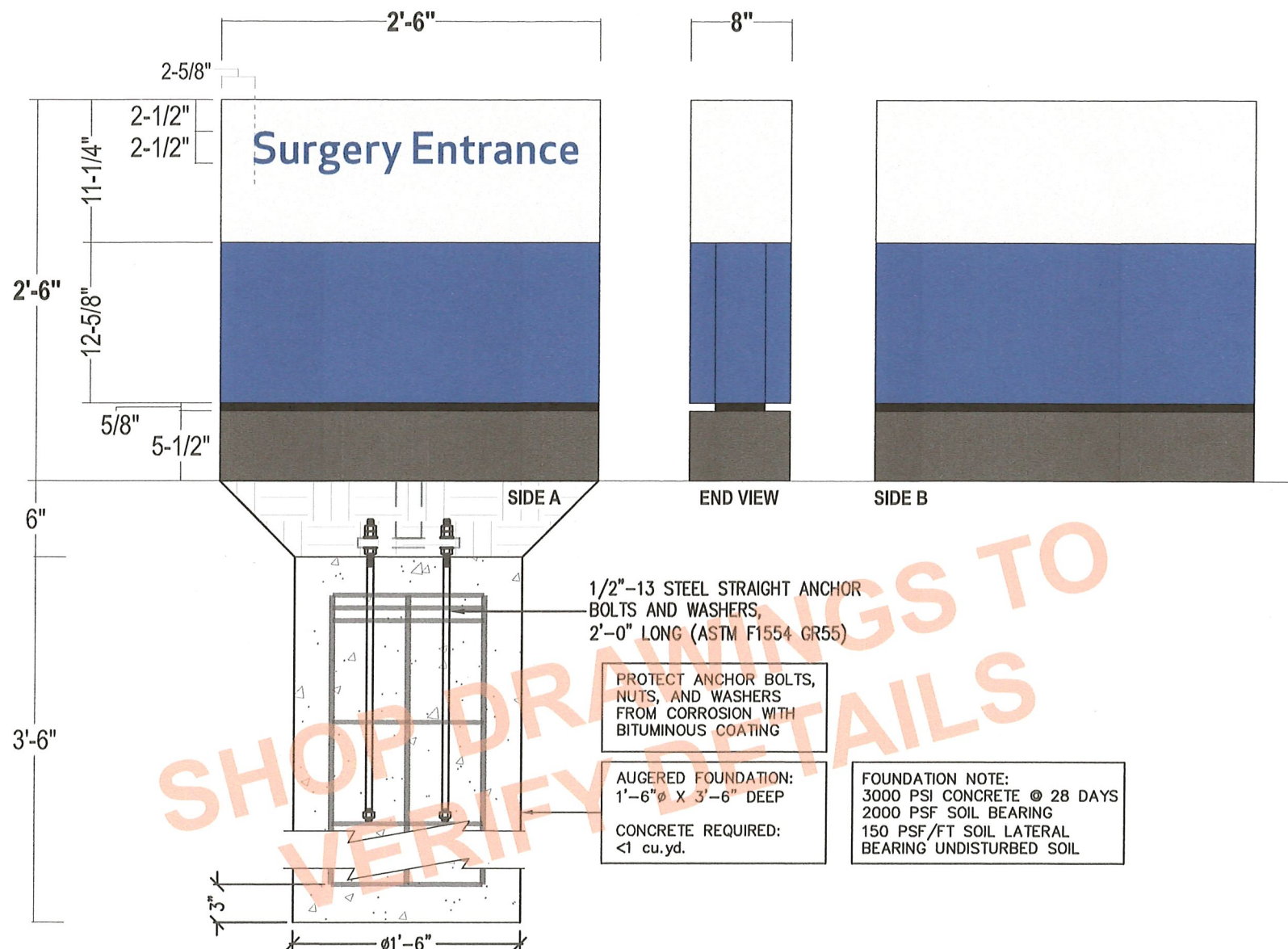
ID-30-NIL

4.6 square feet

EXISTING SIGN SF:	0
PROPOSED SIGN SF:	4.6

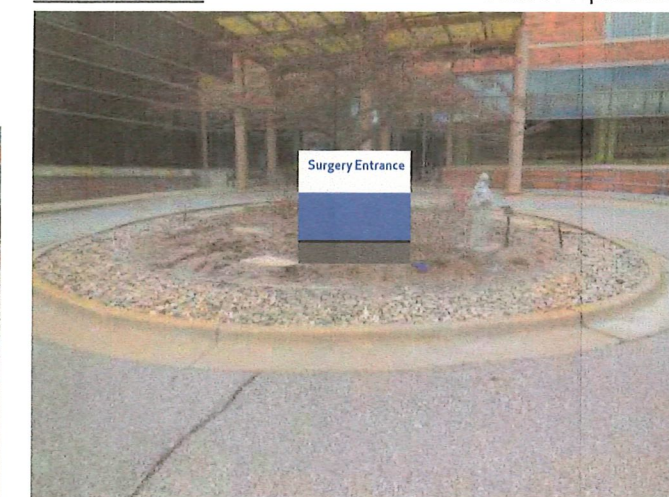
refer to
MONIGLE
CONTROL DOCUMENTS
for manufacturing details

NEW SIGN TYPE
ADDED TO
PROGRAM



PROPOSED

Scaled Proportionally



EXISTING CONDITIONS



Install new sign in planter area out front of Surgery Entrance, parallel to doors

- CABINET:** 8" deep aluminum angle sign frame w/ .125 alum. skin; Painted HFH White & HFH Dk. Blue, semi-gloss finish
- FACES:** .125" Pan formed Aluminum faces
all painted HFH White & HFH Dk. Blue, semi-gloss finish
Attached w/ stainless steel piano hinge for internal access
- GRAPHICS:** Surface applied Reflective vinyl graphics to match colors shown
- REVEAL:** Alum. Construction; Painted to match HFH Black, semi-gloss finish
- BASE:** .125" fab'd alum. construction; painted HFH Dk. Gray, semi-gloss finish
One side to be removable for install access
- INSTALL:** Cabinet to have internal steel and will secure to concrete foundation using base plate 6" below grade - *See Engineering for all details*
- QUANTITY:** (1) ONE REQUIRED

COLOR PALETTE

	Digitally printed by Miratec to match PMS 2748		Matthews MP 74601 R 211027; Semi-Gloss		Matthews MP 30914; Semi-Gloss
	Matthews MP 6425sp Satin High Hide White		Matthews MP 18243 R 212556; Semi-Gloss		

Paint finish to be semi-gloss unless otherwise specified

Stratus

onestratus.com

8959 Tyler Boulevard
Mentor, Ohio 44060

888.503.1569

CLIENT:

HENRY FORD HEALTH

ADDRESS:

1101 W UNIVERSITY DR
ROCHESTER, MI
48307-1863

PAGE NO.:

23

ORDER NUMBER:

1236932

SITE NUMBER:

2110

ELECTRONIC FILE NAME:

K:\ACCOUNTS\H\Henry Ford Health System\Locations\2025\MI\2110_Rochester\2110_Rochester_R4.cdr

PROJECT NUMBER:

89324

PROJECT MANAGER:

NATHAN FRAZIER

Rev #	Req #	Date/Artist	Description	Rev #	Req #	Date/Artist	Description
Original	529811	05/13/25 NS					
Rev 1	532600	05/22/25 BLAN					
Rev 2	537667	06/18/25 CR					
Rev 3	540328	07/08/25 AKS					
Rev 4	547241	08/13/25 AKS					

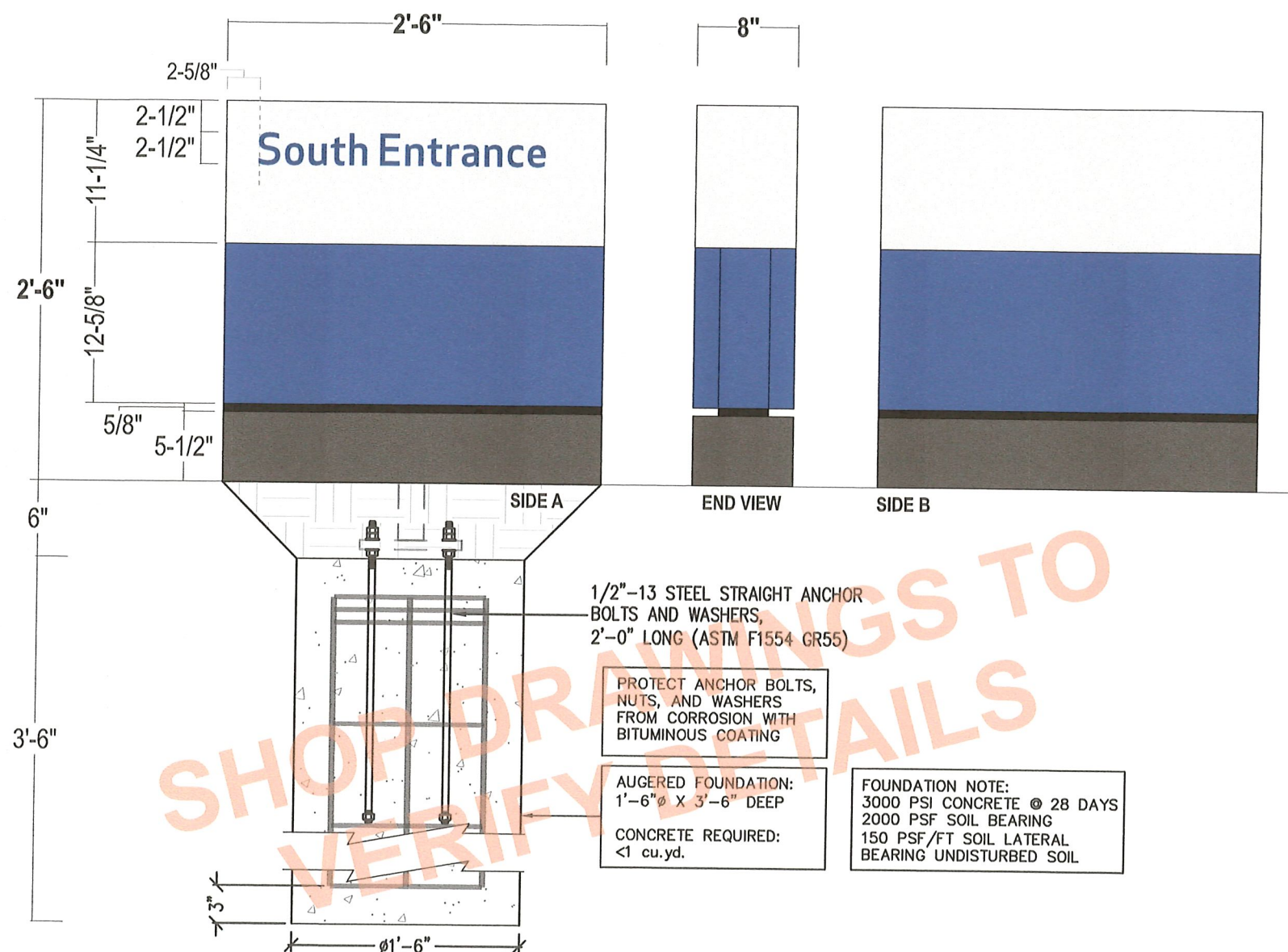
PRINTS ARE THE EXCLUSIVE PROPERTY OF STRATUS. THIS MATERIAL SHALL NOT BE USED, DUPLICATED, OR OTHERWISE REPRODUCED WITHOUT THE PRIOR WRITTEN CONSENT OF STRATUS.

S/F NON-ILLUMINATED BUILDING ID - NON-BRANDED

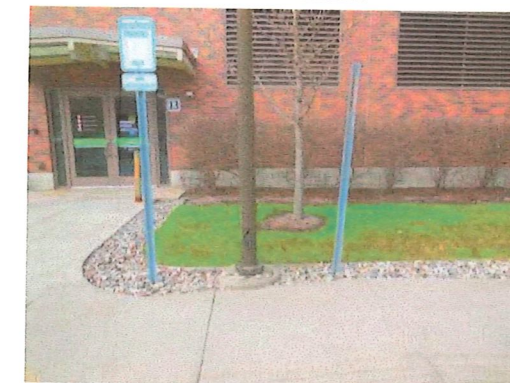
ID-30-NIL

EXISTING SIGN SF:	0
PROPOSED SIGN SF:	4.6

**NEW SIGN TYPE
ADDED TO
PROGRAM**



EXISTING CONDITIONS



Install in grass to right of
and parallel to doors

PROPOSED

Scaled Proportionality



CABINET: 8" deep aluminum angle sign frame w/ .125 alum. skin;
Painted HFH White & HFH Dk. Blue, semi-gloss finish

FACES: .125" Pan formed Aluminum faces
all painted HFH White & HFH Dk. Blue, semi-gloss finish
Attached w/ stainless steel piano hinge for internal access

GRAPHICS: Surface applied Reflective vinyl graphics to match colors shown

REVEAL: Alum. Construction; Painted to match HFH Black, semi-gloss finish

BASE: .125" fab'd alum. construction; painted HFH Dk. Gray, semi-gloss finish
One side to be removable for install access

INSTALL: Cabinet to have internal steel and will secure to concrete foundation using base plate 6" below grade - *See Engineering for all details*

QUANTITY: (1) ONE REQUIRED

COLOR PALETTE

	Digitally printed by Miratec to match PMS 2748		Matthews MP 74601 R 211027; Semi-Gloss		Matthews MP 30914; Semi-Gloss
	Matthews MP 6425sp Satin High Hide White		Matthews MP 18243 R 212556; Semi-Gloss		

Paint finish to be semi-gloss unless otherwise specified

Stratus

onetratus.com

888.503.1569

CLIENT:

HENRY FORD HEALTH

ADDRESS:

1101 W UNIVERSITY DR
ROCHESTER, MI
48307-1863

PAGE NO.:

24

ORDER NUMBER:

1236932

SITE NUMBER:

2110

ELECTRONIC FILE NAME:

K:\ACCOUNTS\H\Henry Ford Health System\Locations\2025\MI\2110_Rochester\2110_Rochester R4.cdr

PROJECT NUMBER:

89324

PROJECT MANAGER:

NATHAN FRAZIER

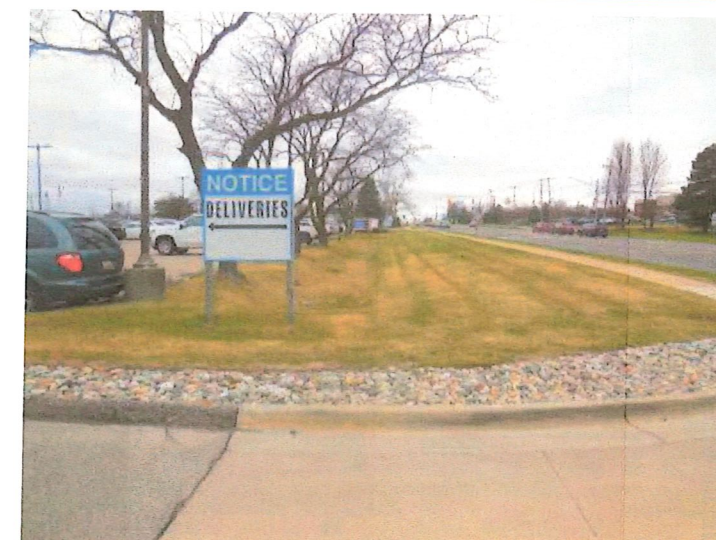
Rev #	Req #	Date/Artist	Description	Rev #	Req #	Date/Artist	Description
Original	529811	05/13/25 NS					
Rev 1	532600	05/22/25 BLAN					
Rev 2	537667	06/18/25 CR					
Rev 3	540328	07/08/25 AKS					
Rev 4	547241	08/13/25 AKS					

PRINTS ARE THE EXCLUSIVE PROPERTY OF STATUS. THIS MATERIAL SHALL NOT BE USED, DUPLICATED, OR OTHERWISE REPRODUCED WITHOUT THE PRIOR WRITTEN CONSENT OF STATUS.

EXISTING SIGN SF:	±16
PROPOSED SIGN SF:	88.7



PROPOSED SIGNAGE



Existing ±4'-0" x ±4'-0" signage
to be removed & replaced;
Install far enough away to avoid existing footer

Stratus

onstratus.com
8959 Tyler Boulevard
Mentor, Ohio 44060
888.503.1569

CLIENT:
HENRY FORD HEALTH

ADDRESS:
1101 W UNIVERSITY DR
ROCHESTER, MI
48307-1863

PAGE NO.:

25

ORDER NUMBER:
1236932

SITE NUMBER:
2110

ELECTRONIC FILE NAME:
K:\ACCOUNTS\H\Henry Ford Health System\Locations\2025\MI\2110_Rochester\2110_Rochester_R4.cdr

PROJECT NUMBER:
89324

PROJECT MANAGER:
NATHAN FRAZIER

Rev #	Req #	Date/Artist	Description	Rev #	Req #	Date/Artist	Description
Original	529811	05/13/25 NS					
Rev 1	532600	05/22/25 BLAN					
Rev 2	537667	06/18/25 CR					
Rev 3	540328	07/08/25 AKS					
Rev 4	547241	08/13/25 AKS					

PRINTS ARE THE EXCLUSIVE PROPERTY OF STRATUS. THIS MATERIAL SHALL NOT BE USED, DUPLICATED, OR OTHERWISE REPRODUCED WITHOUT THE PRIOR WRITTEN CONSENT OF STRATUS.

E43

D/F ILLUMINATED EMERGENCY PYLON SIGN

PE-12-IL

Scale: 3/8"=1'-0"

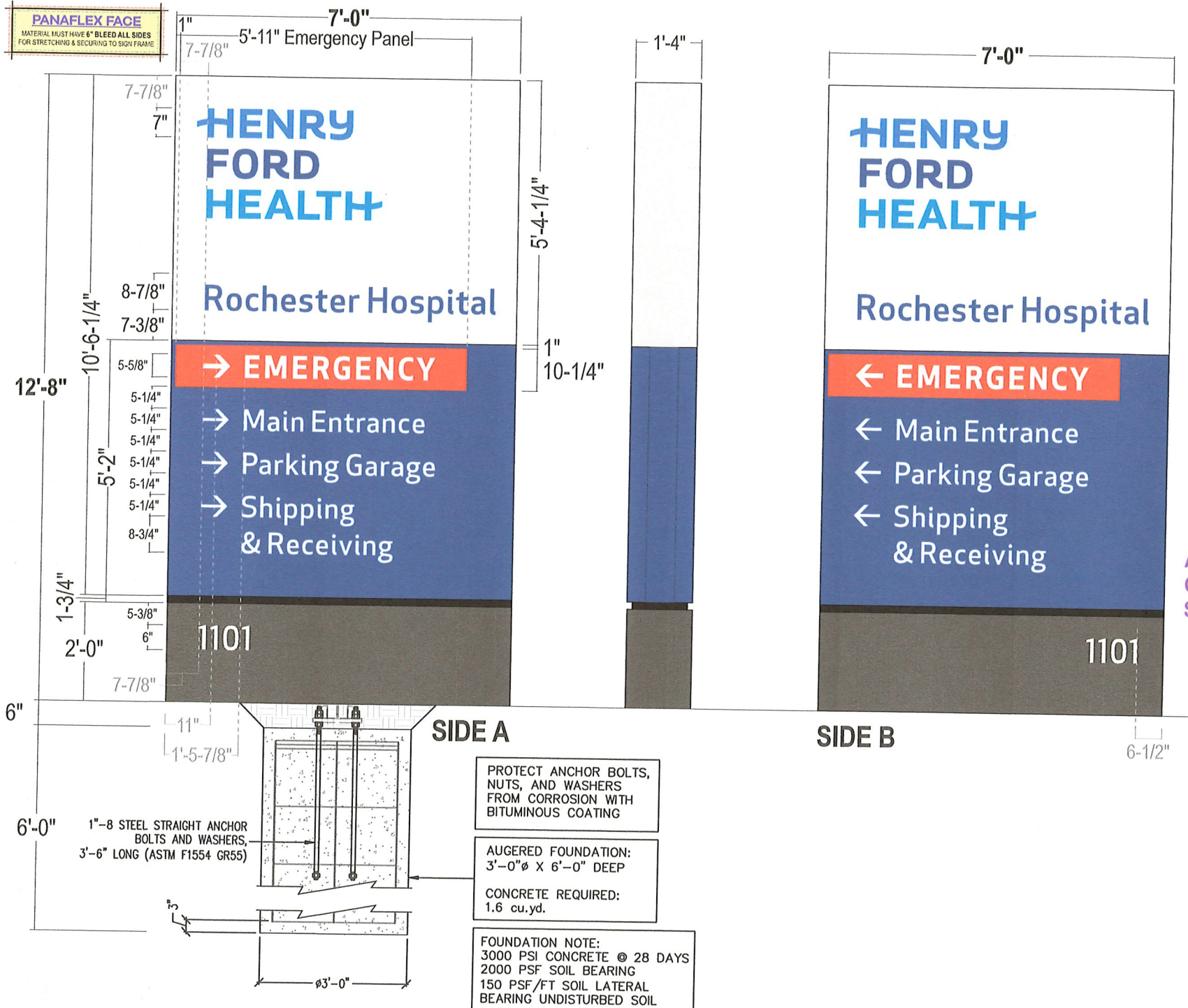
88.7 square feet

See Engineering Drawing For all Details

refer to
MONIGLE
CONTROL DOCUMENTS
for manufacturing details

refer to
PRODUCTION SHOP DRAWING
HFS0036F
for manufacturing details

PANAFLEX FACE
MATERIAL MUST HAVE 6" BLEED ALL SIDES
FOR STRETCHING & SECURING TO SIGN FRAME



CABINET: 16" deep aluminum angle sign frame w/ Bleed retainers & .125" alum. skin; Painted to match colors shown

FACES: **Upper Faces:** 3M Panagraphics III Flexible substrate w/ digitally printed graphics to match colors shown; *Seamless material shall be used where possible*
Emergency Panel: .25" white trans acrylic routed back from face at perimeter by 1/8" and flushed into routed window; surface applied trans red reversed out vinyl overlay; 1" Dk. Blue painted border around perimeter of emergency panel face *opaque the returns and shoulder to prevent light leaks*
Directional Copy: .125" Pan formed Aluminum faces painted HFH dk. blue - graphics Routed from face; 1/4" thick white push thru acrylic (flush w/ face); Second surface applied diffuser film on all graphics

ILLUM.: White LEDs as required by manufacturer
POWER SUPPLIES HOUSED IN CABINET

REVEAL: Alum. Construction; Painted to match HFH Black semi-gloss finish

BASE: .125" fab'd alum. construction; painted HFH Dk. Gray - semi-gloss finish
One side to be removable for install access

ADDRESS: Surface applied reflective white vinyl graphics

INSTALL: Cabinet to have internal steel and will secure to concrete foundation using base plate 6" below grade - *See Engineering for all details*

QUANTITY: (1) ONE D/F PYLON SIGN REQUIRED

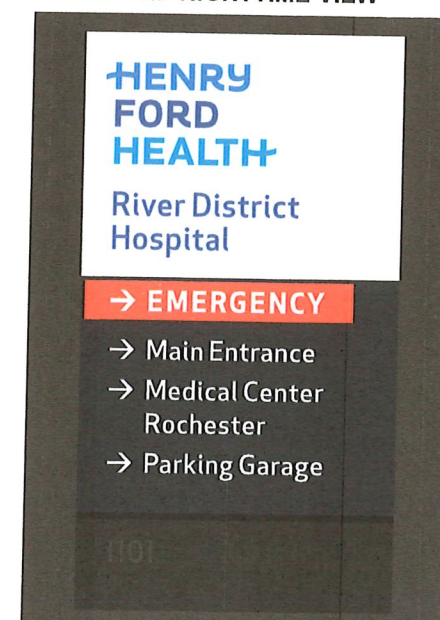
ADDRESS NUMERALS
ORIENTED TOWARD
STREET SIDE

COLOR PALETTE

Matthews MP 6425sp Satin High Hide White; Semi Gloss	Digitally printed to match Pantone 2387
Matthews MP 74601 R 211027; Semi Gloss	Digitally printed to match Pantone 2748
Matthews MP 18243 R 212556; Semi Gloss	Digitally printed to match Pantone 2925
Matthews MP 30914 Semi Gloss	3M 3630-43 Translucent Red
	3M 680-10 White Reflective

Paint finish to be semi-gloss unless otherwise specified
All Vinyl Provided by miratec or printed to match MP colors

SIMULATED NIGHTTIME VIEW



Stratus

onestratus.com

8959 Tyler Boulevard
Mentor, Ohio 44060

888.503.1569

CLIENT:

HENRY FORD HEALTH

ADDRESS:

1101 W UNIVERSITY DR
ROCHESTER, MI
48307-1863

PAGE NO.:

26

ORDER NUMBER:

1236932

SITE NUMBER:

2110

ELECTRONIC FILE NAME:

K:\ACCOUNTS\H\Henry Ford Health System\Locations\2025\MI\2110_Rochester\2110_Rochester_R4.cdr

PROJECT NUMBER:

89324

PROJECT MANAGER:

NATHAN FRAZIER

Rev #	Req #	Date/Artist	Description	Rev #	Req #	Date/Artist	Description
Original	529811	05/13/25 NS					
Rev 1	532600	05/22/25 BLAN					
Rev 2	537667	06/18/25 CR					
Rev 3	540328	07/08/25 AKS					
Rev 4	547241	08/13/25 AKS					

PRINTS ARE THE EXCLUSIVE PROPERTY OF STRATUS. THIS MATERIAL SHALL NOT BE USED, DUPLICATED, OR OTHERWISE REPRODUCED WITHOUT THE PRIOR WRITTEN CONSENT OF STRATUS.