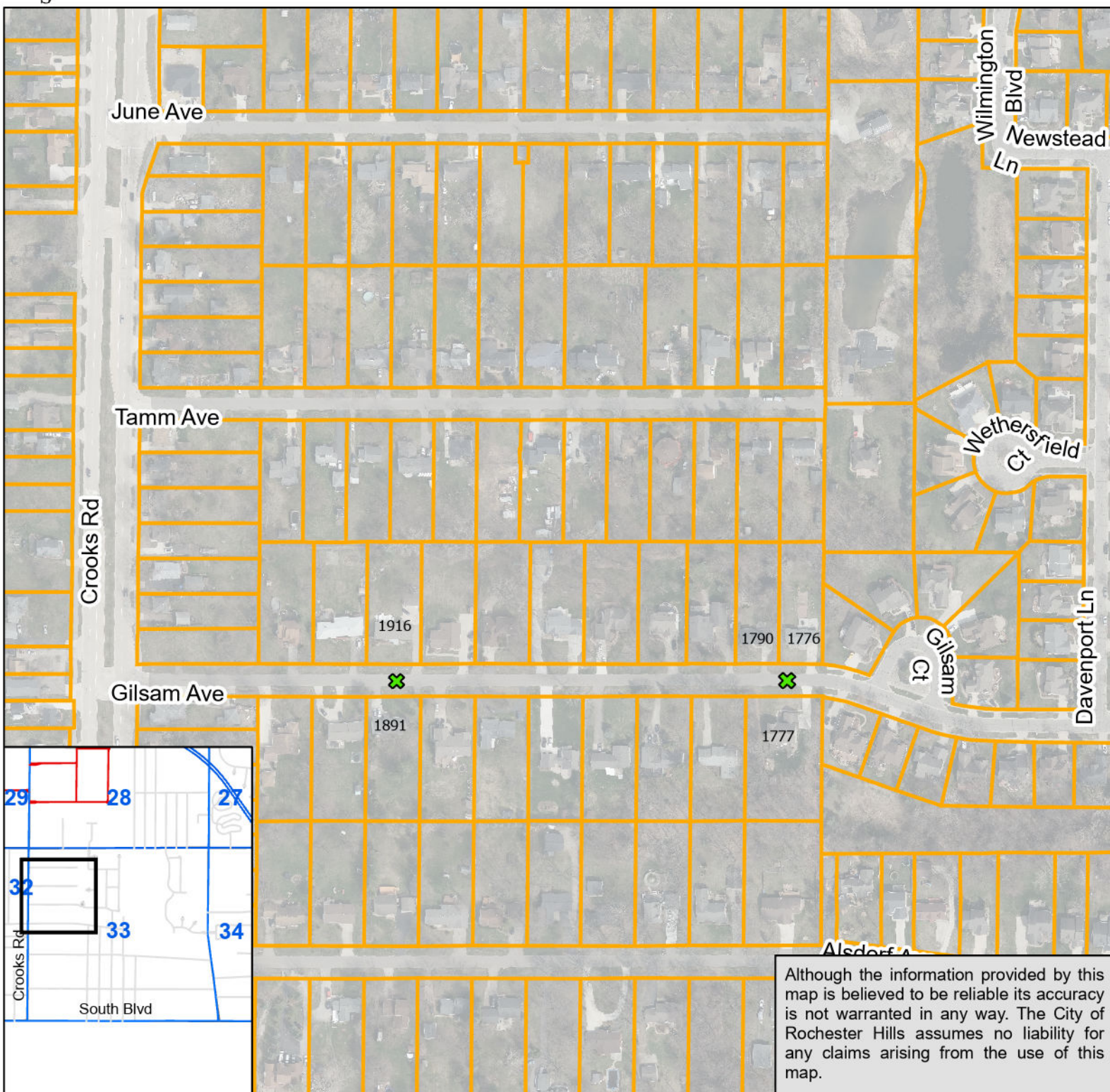




Gilsam Ave 2025 Speed Study - Proposed Speed Hump Locations Section 33




Although the information provided by this map is believed to be reliable its accuracy is not warranted in any way. The City of Rochester Hills assumes no liability for any claims arising from the use of this map.

Map Description:
Proposed locations for speed hump installation along Gilsam Ave based on the 2025 traffic speed study results.

Drawn By: ERB Date: 7/31/2025

Legend

 Proposed Speed Hump Location

0 250 500 Feet
1 inch equals 250 Feet