

NOV 13 2023

Building Department
City of Rochester Hills



Somerset Early Childhood Center

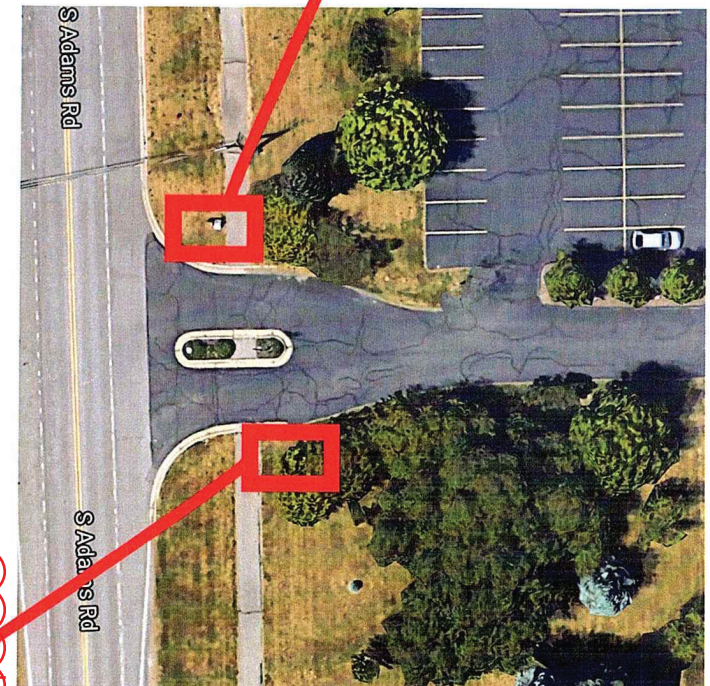
1385 S Adams Rd,
Rochester Hills, MI 48309
Contact: Anne Porter

Existing Sign



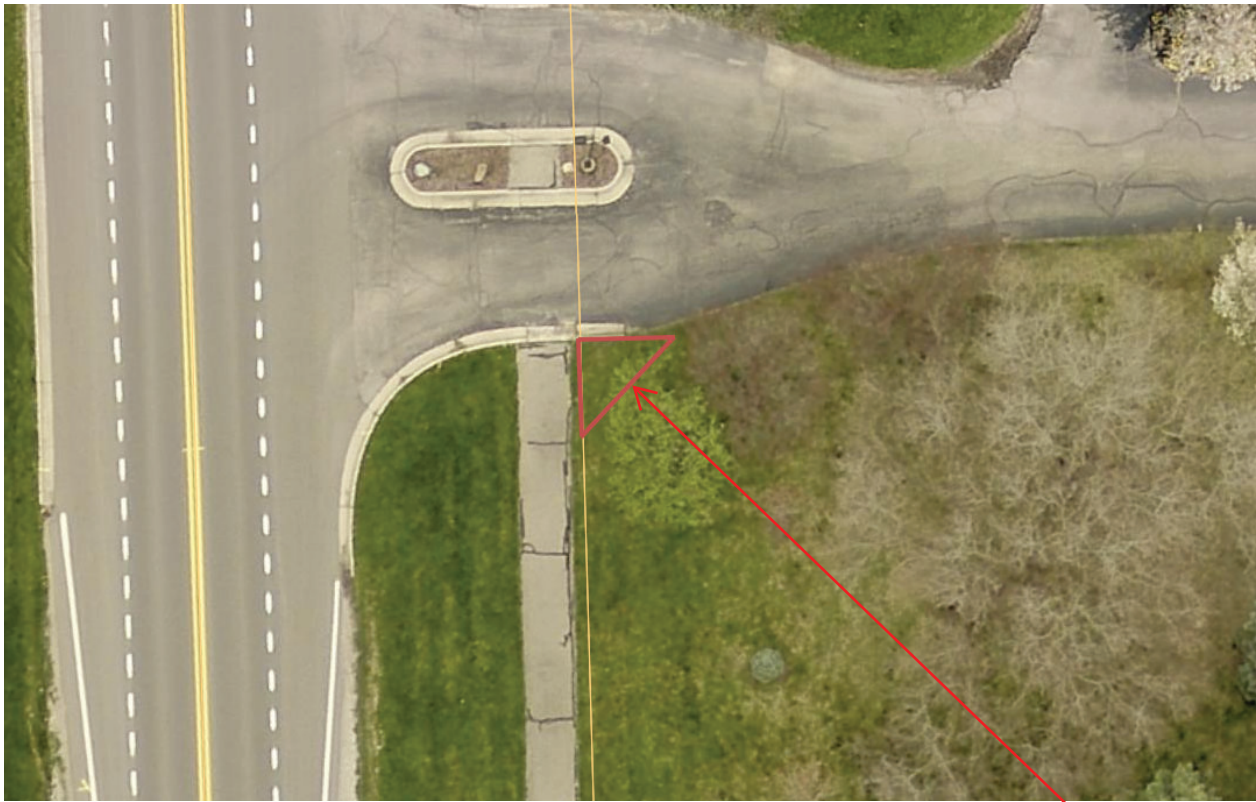
Require readable measurements.

Proposed New
Sign Location



Sign placement requires HDC approval.
Contact Planning & Economic Development (248)656-4660

Also, see
page 2



Sign must be located outside of corner clearance.
Sec. 134-4(3)(a) no sign shall be placed within the triangular area at the corner of the intersection of a street right-of-way line and the edge of a private driveway for a distance along each line of 15 feet from their point of intersection