



Existing Historic Home, Exterior Enhancements & Site Improvements

FEBRUARY 3<sup>RD</sup> 2026

HISTORIC DISTRICT COMMISSION

# LORNA STONE HOUSE

Krieger  
Klatt  
Architects

# LORNA STONE HOUSE

## Submission to Historic District Commission

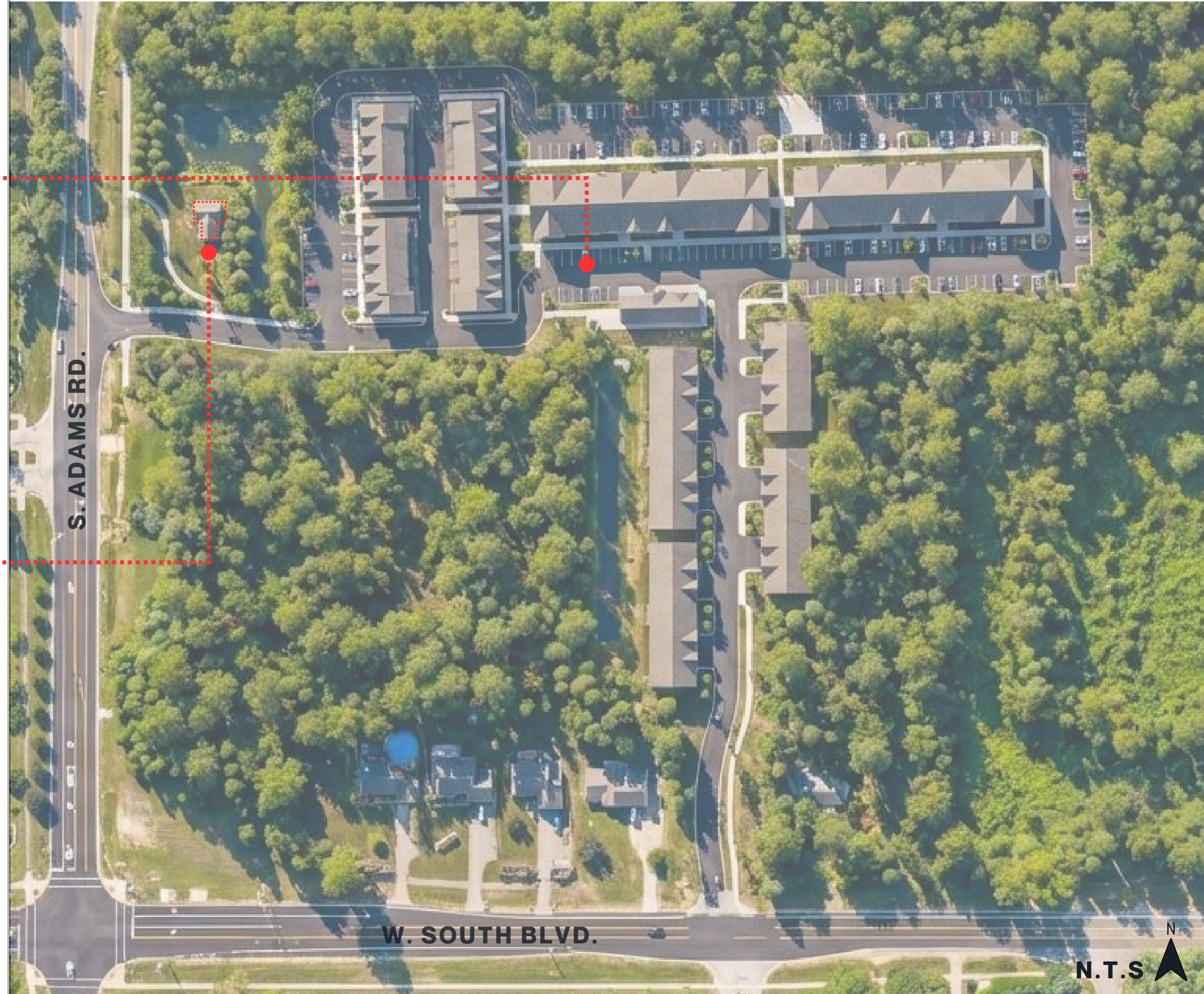
### NEW RESIDENTIAL LIVING COMPLEX

The development is a residential living community featuring a mix of three-story walk-up apartments, townhomes, and cottage units. Amenities include a central clubhouse, a maintenance facility, and integrated water features such as a detention pond and bioswale to support sustainable stormwater management. Public green spaces and native plantings are incorporated throughout the site to promote connectivity, environmental stewardship, and resident enjoyment. The community is located behind the historic Lorna Stone House, which remains prominently positioned as a preserved landmark and defining gateway for the development and the City of Rochester Hills.

### EXISTING LORNA STONE HOUSE

**BACKGROUND:** Records show the house was originally constructed in two phases. The original construction built in 1824 consisted of a wood framed, two room structure. A second phase was added in 1840 that consisted of a partial 2-story on the north end built as a traditional stone Upright and-Wing in the Greek Revival style. Further additions were made in 1950 and 1990 that consisted of a screen porch and second story added to the south end of the building.

**HISTORICAL SIGNIFICANCE:** It is assumed there is no historical significance to any construction post the 1840 phase.



N  
N.T.S

# LORNA STONE HOUSE

Submission to Historic District Commission

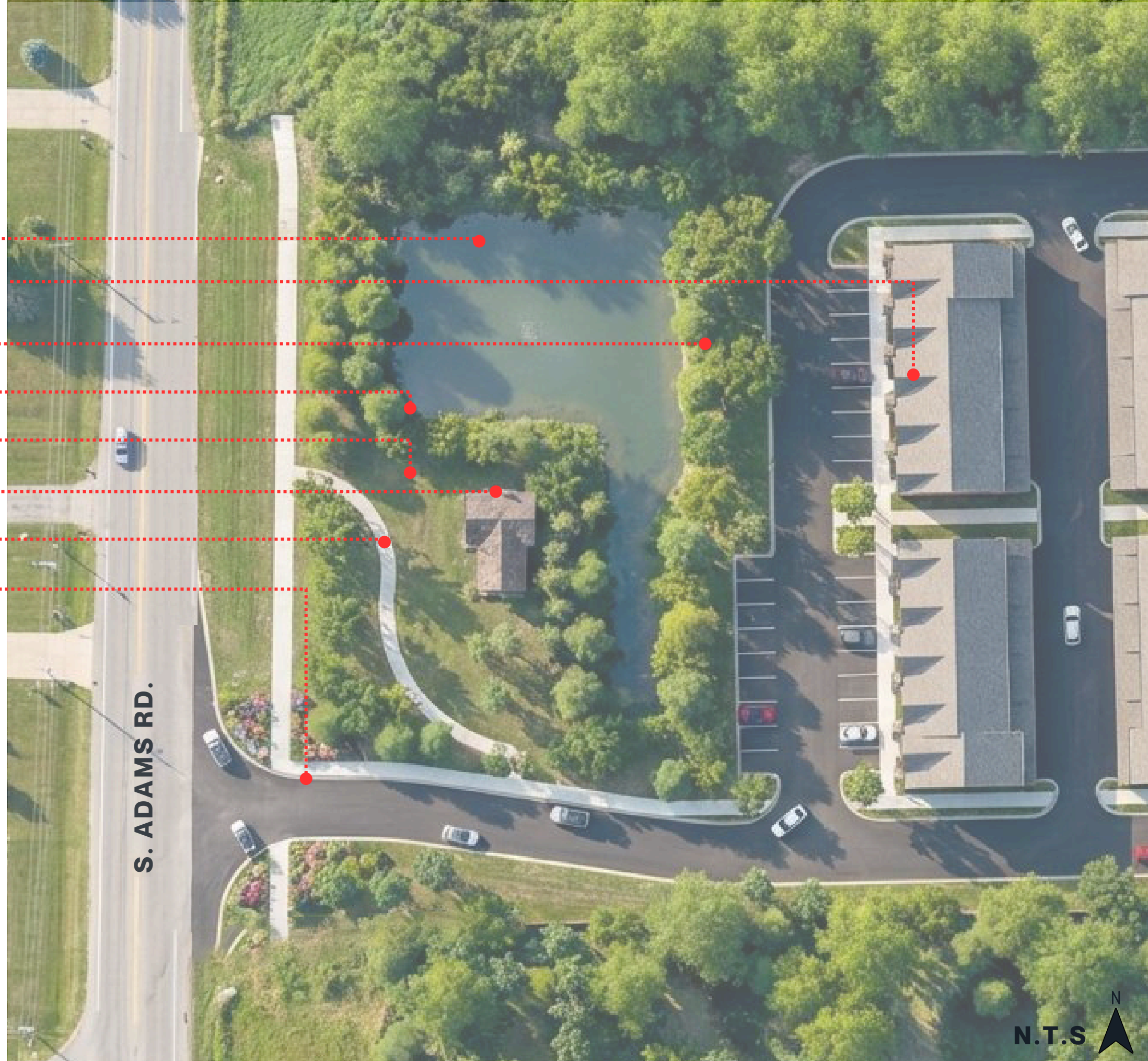


LORNA STONE HOUSE - EXISTING VIEW FROM SE



LORNA STONE HOUSE - EXISTING VIEW FROM S. ADAMS RD.

- LANSCAPED DETENTION POND
- NEW RESIDENTIAL LIVING COMPLEX
- NEW VEGETATIVE BUFFER
- NEW NATIVE LANDSCAPING
- NEW PUBLIC GREEN SPACE
- EXISTING LORNA STONE HOUSE
- DEDICATED PEDESTRIAN PATH
- NEW CURB CUT TO PROVIDE S. ADAMS ENTRANCE



N.T.S. N

# LORNA STONE HOUSE

## Submission to Historic District Commission

**BACKGROUND:** The Lorna Stone House is an upright-and-wing residence in the Greek Revival style and is the **only known stone Greek Revival house** in Rochester Hills, making it architecturally significant. Originally constructed in 1824 as a **two-room wood-frame structure**, the house was expanded in 1840 with the addition of the **stone upright-and-wing section** on the west end. The property played a role in the **Underground Railroad during the Civil War** and originally featured hand-blown glass windows. Significant alterations occurred in the 1950s, including an **aluminum-sided second-story addition** to the south wing, followed by a detached garage in 1983 and a second addition in 1985; the garage was later determined to be non-contributing and was demolished prior to 2017.



# LORNA STONE HOUSE

Submission to Historic District Commission



# LORNA STONE HOUSE

Submission to Historic District Commission



# LORNA STONE HOUSE

Submission to Historic District Commission



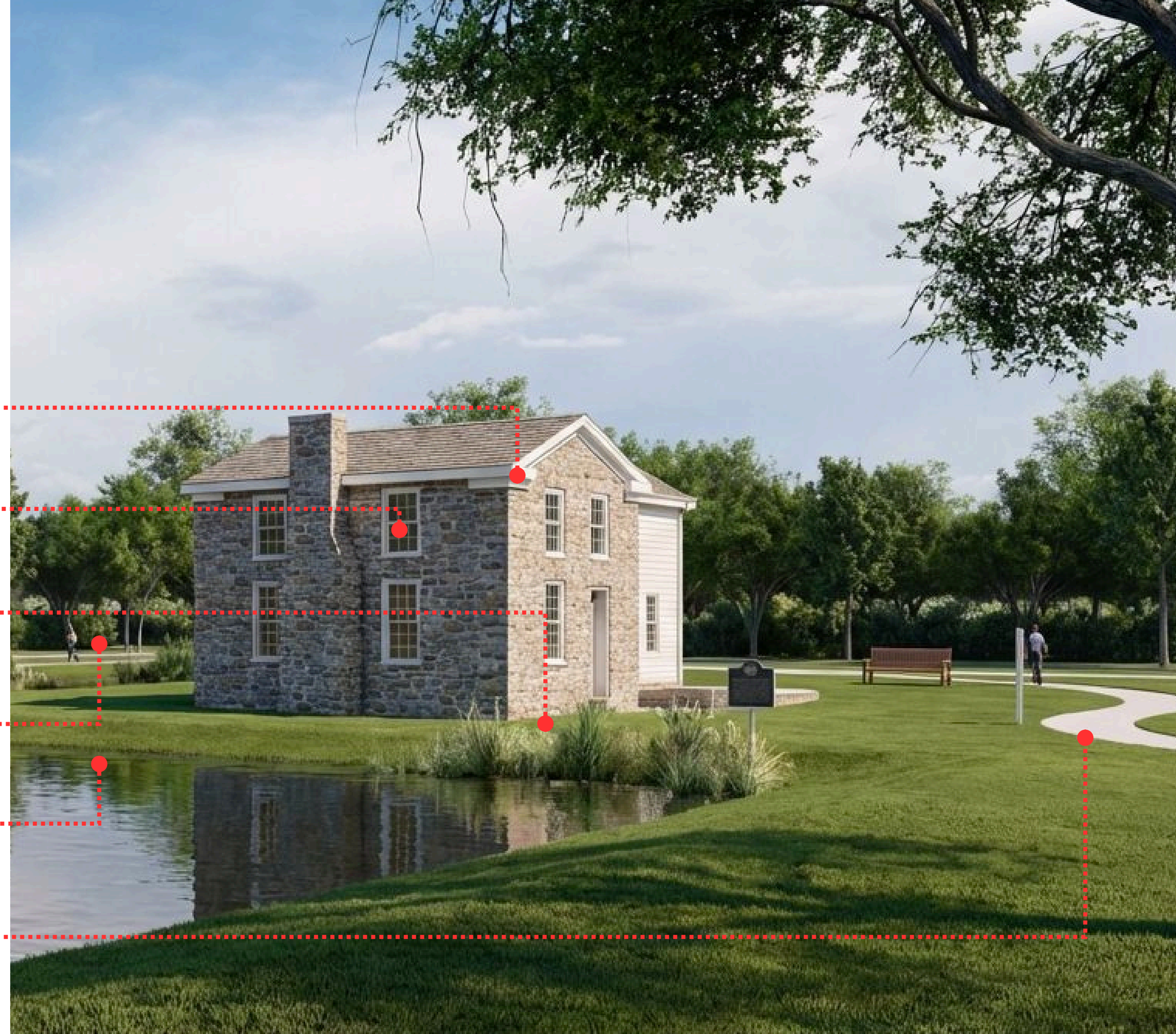
# LORNA STONE HOUSE

Submission to Historic District Commission

## LORNA STONE HOUSE

### CONSTRUCTION PLAN

- 01** Restore the building to its original Greek Revival character, including reconstructed box-eaves, rake boards, and tuck-point masonry as needed
- 02** Replace existing windows with historically appropriate units
- 03** Enhance the site with native, naturalistic landscaping
- 04** Introduce a vegetative buffer to screen adjacent new construction
- 05** Showcase the natural setting with water features and curated viewing areas of the house
- 06** Strengthen access and visibility with a new pedestrian pathway



# LORNA STONE HOUSE

Submission to Historic District Commission

## LORNA STONE HOUSE

### CONSTRUCTION PLAN

- 01** Restore the building to its original Greek Revival character, including reconstructed box-eaves, rake boards, and tuck-point masonry as needed
- 02** Replace existing windows with historically appropriate units
- 03** Enhance the site with native, naturalistic landscaping
- 04** Introduce a vegetative buffer to screen adjacent new construction
- 05** Showcase the natural setting with water features and curated viewing areas of the house
- 06** Strengthen access and visibility with a new pedestrian pathway



# LORNA STONE HOUSE

Submission to Historic District Commission

## LORNA STONE HOUSE

---

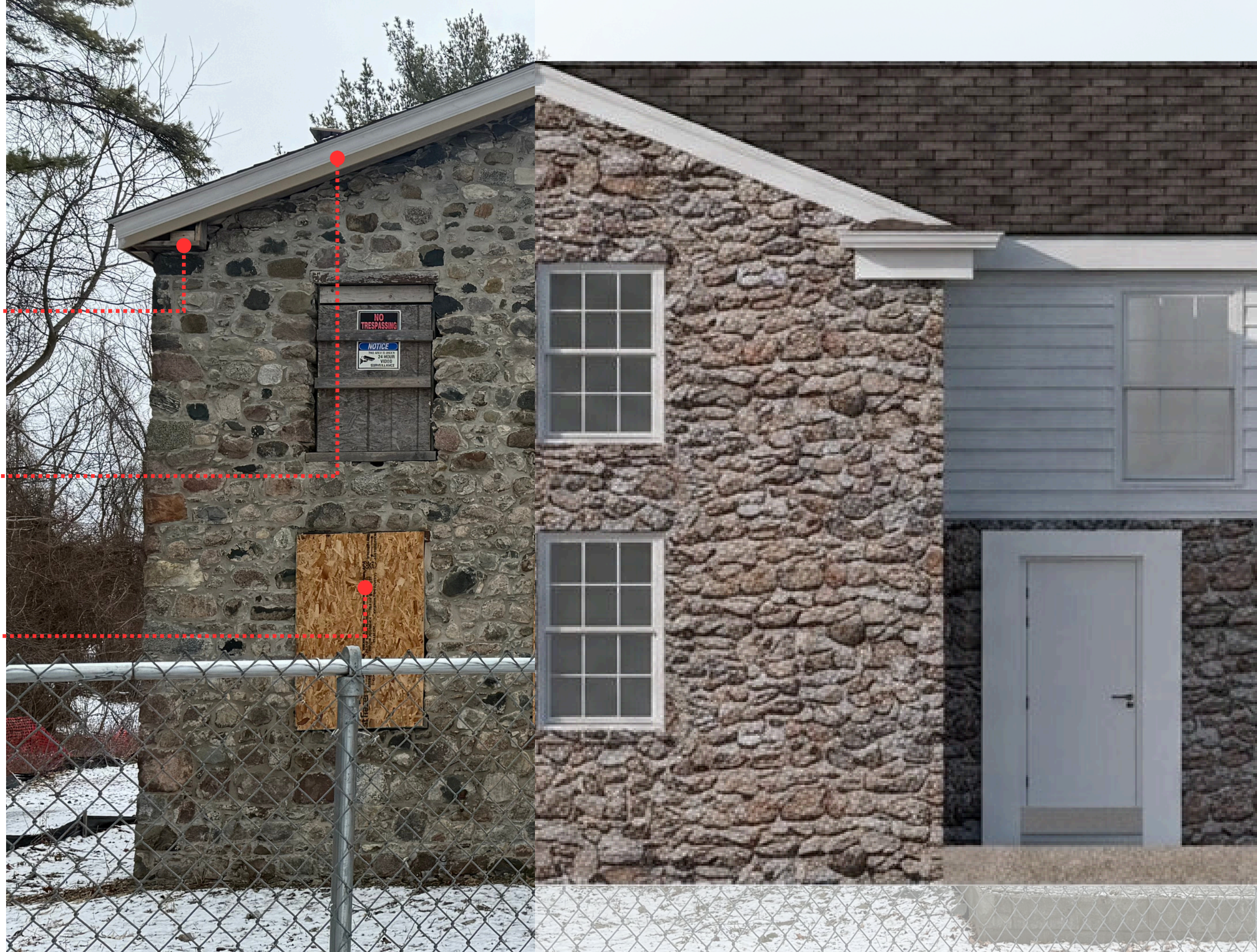
REPAIR BOX-EAVES



REPAIR RAKE BOARDS



WINDOW REPLACEMENT

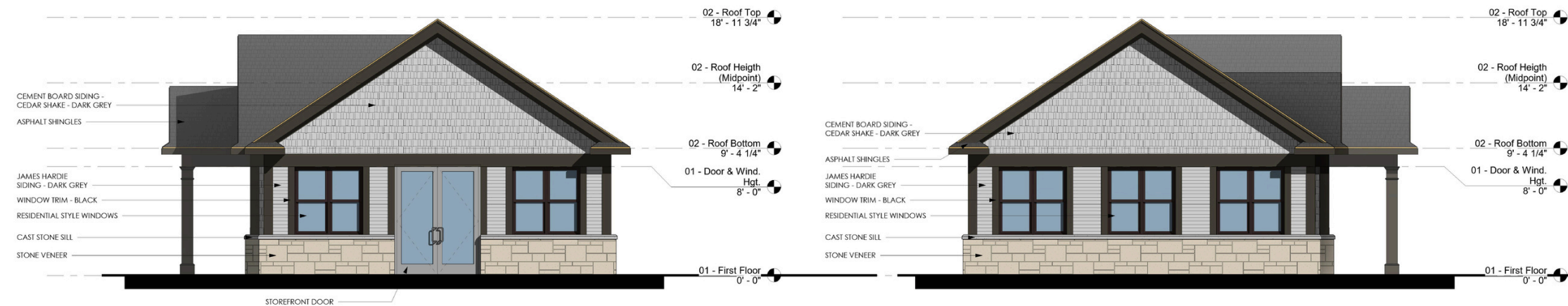


# LORNA STONE HOUSE

Submission to Historic District Commission

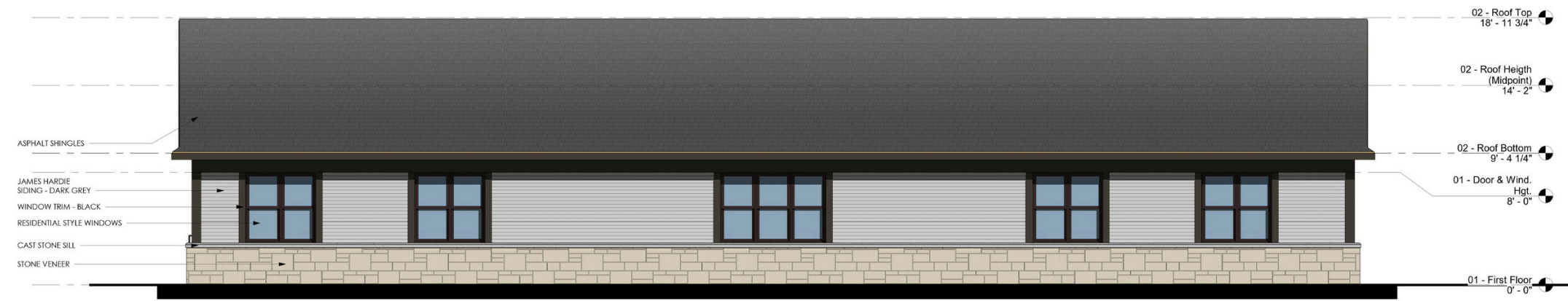


1 Front (North) Elevation  
A.104 1/4" = 1'-0"



2 Right (West) Side Elevation  
A.104 1/4" = 1'-0"

3 Left (East) Side Elevation  
A.104 1/4" = 1'-0"



4 Rear (South) Elevation  
A.104 1/4" = 1'-0"

# LORNA STONE HOUSE

Submission to Historic District Commission



3 Front Elevation  
A.101 3/16" = 1'-0"



1 Side (Left) Elevation  
A.101 3/16" = 1'-0"



1 Rear Elevation  
A.101 3/16" = 1'-0"



2 Side (Right) Elevation  
A.101 3/16" = 1'-0"

# LORNA STONE HOUSE

Submission to Historic District Commission



1 Front (South) Elevation  
A.103 3/32" = 1'-0"



2 Right (East) Side Elevation  
A.103 3/32" = 1'-0"



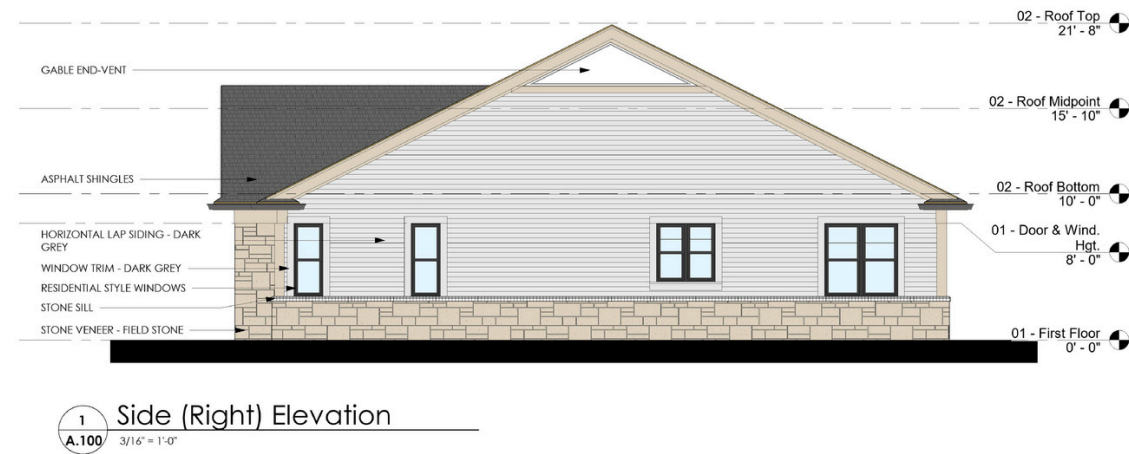
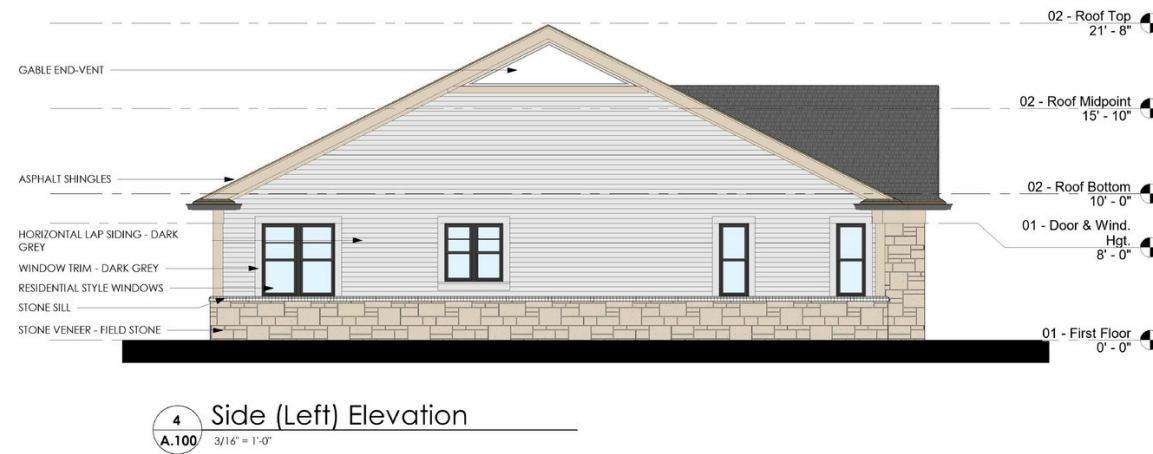
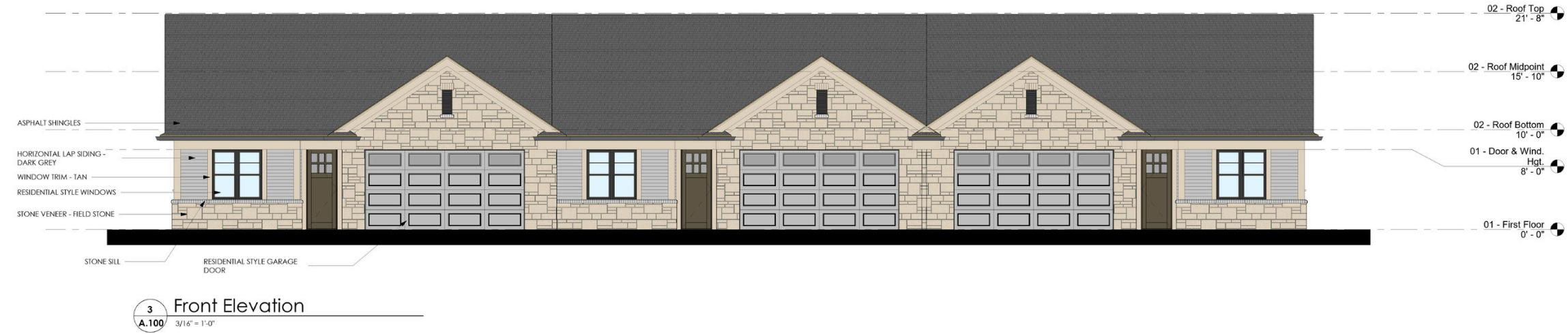
3 Left (West) Side Elevation  
A.103 3/32" = 1'-0"



4 Rear (North) Elevation  
A.103 3/32" = 1'-0"

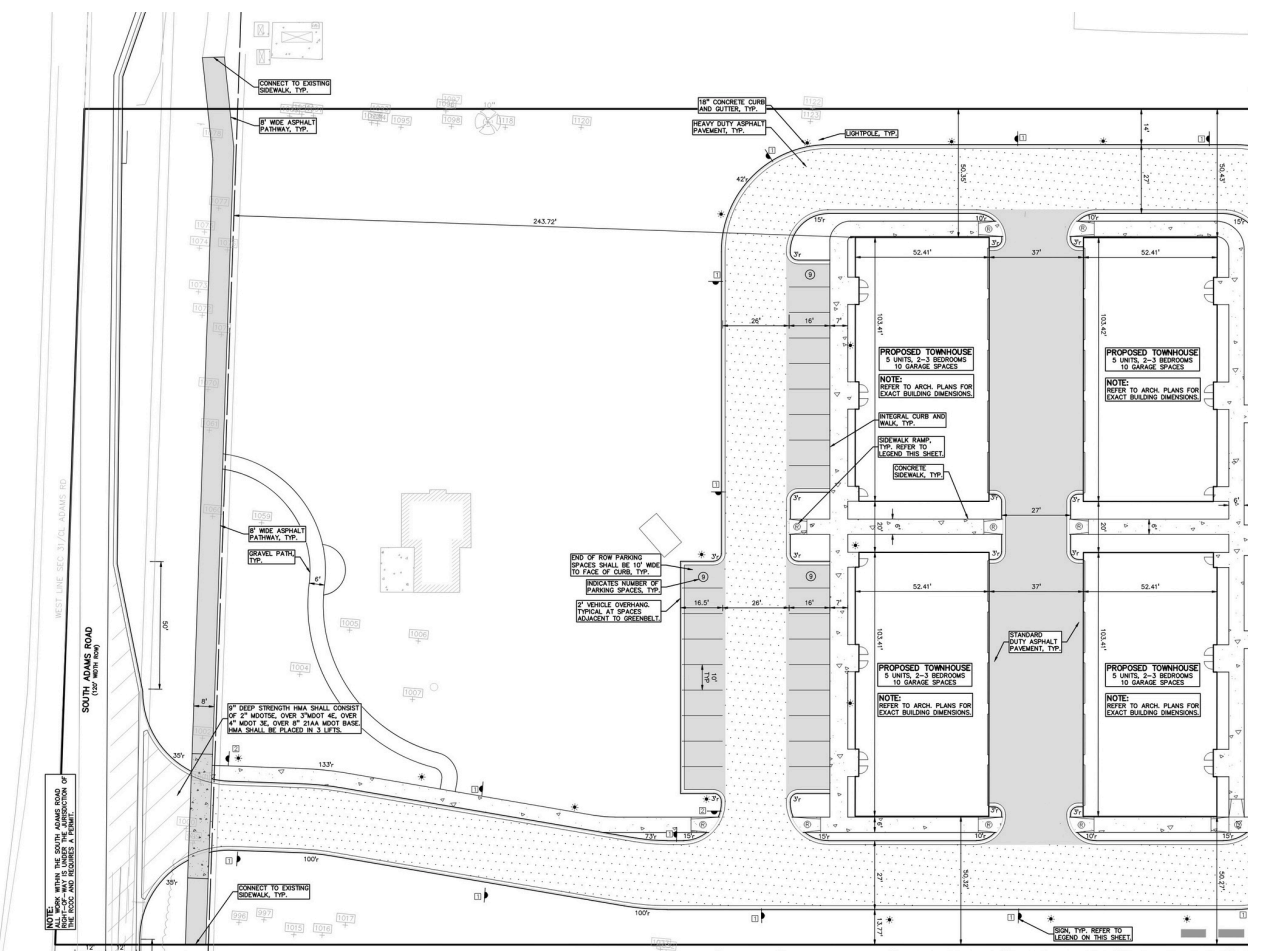
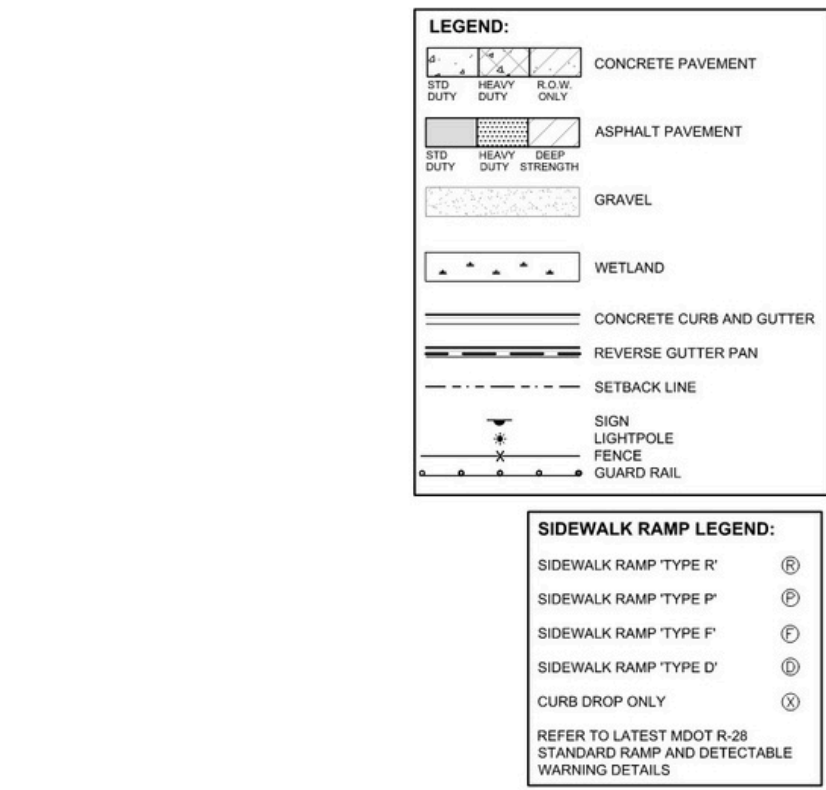
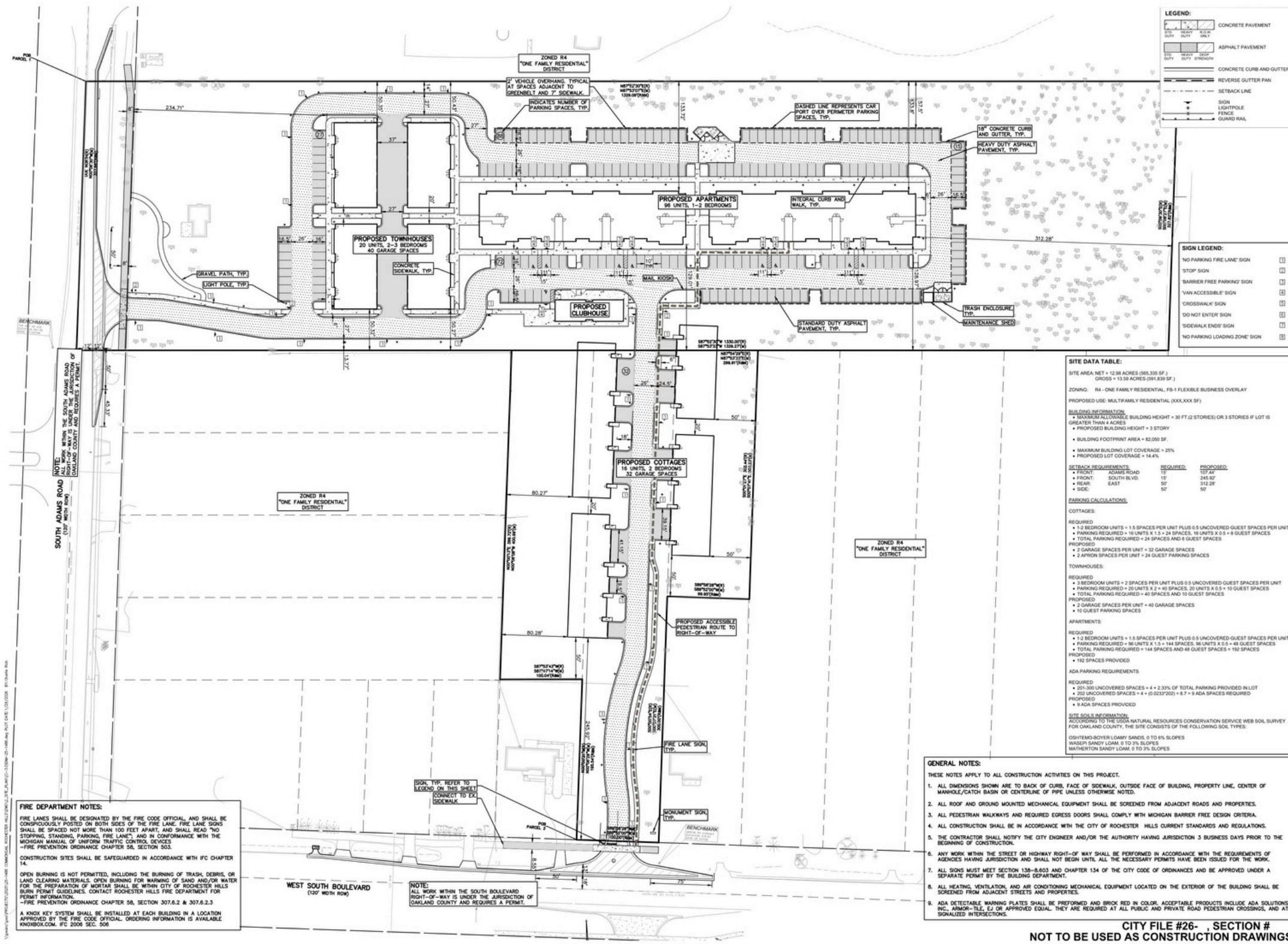
# LORNA STONE HOUSE

Submission to Historic District Commission



# LORNA STONE HOUSE

Submission to Historic District Commission



CITY FILE #26- , SECTION #  
NOT TO BE USED AS CONSTRUCTION DRAWINGS

Thank You!