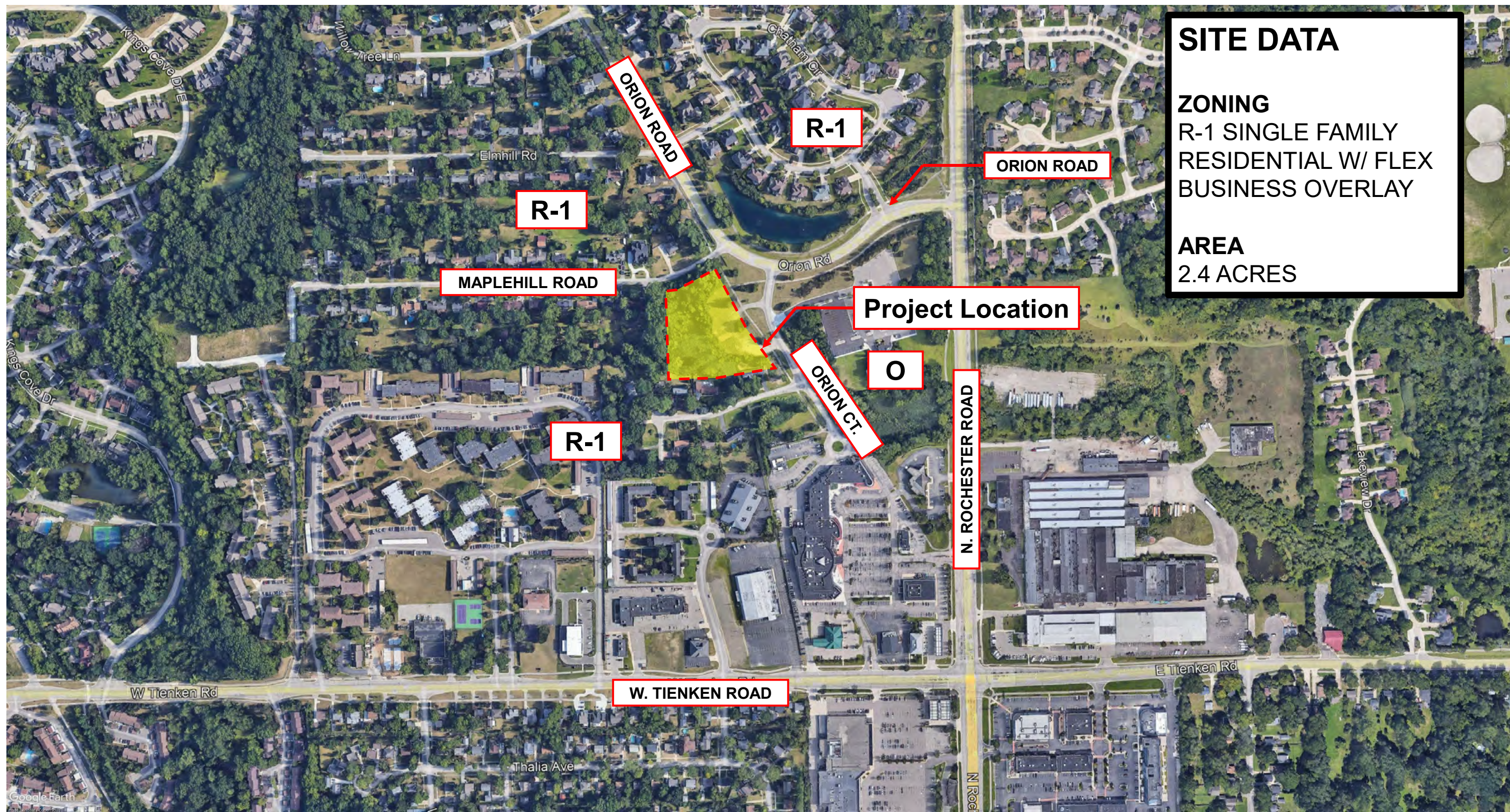


Old Orion Ct.

Multi- Family Development
Rochester Hills, MI



Krieger
Klatt
Architects



Project Location Map

Old Orion Ct.
Rochester Hills, MI

**Krieger
Klatt**
Architects



Existing Conditions – Aerial View to Southwest

Old Orion Ct.
Rochester Hills, MI

**Krieger
Klatt**
Architects



Google Earth
© 2014 Google

Aerial View to Northwest

Old Orion Ct.
Rochester Hills, MI

**Krieger
Klatt**
Architects

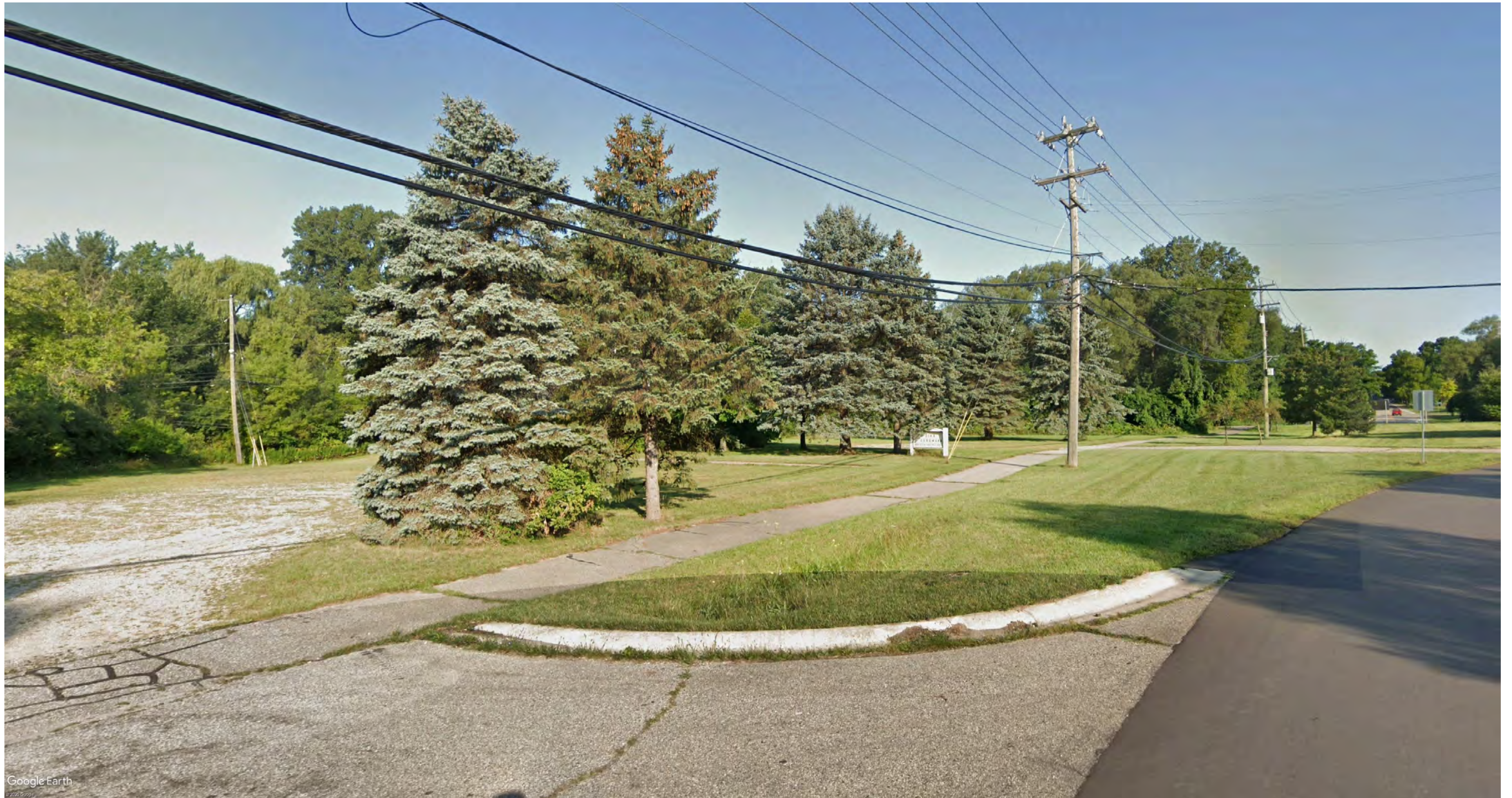


Google Earth
© 2025 Google

Perspective looking Southwest

Old Orion Ct.
Rochester Hills, MI

**Krieger
Klatt**
Architects



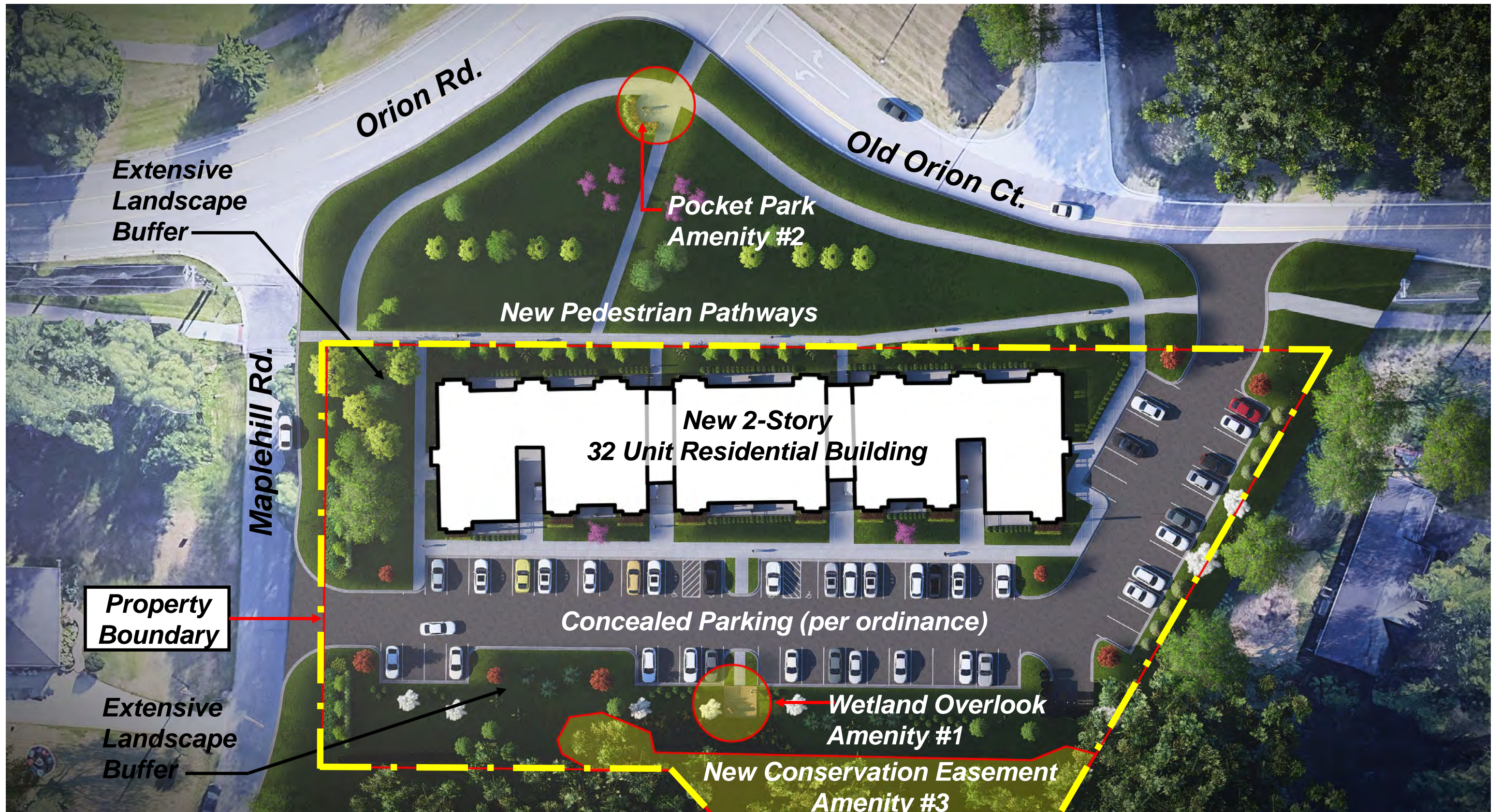
Perspective looking Northwest

Old Orion Ct.
Rochester Hills, MI

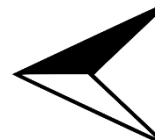
**Krieger
Klatt**
Architects

PROJECT SYNOPSIS

- 2-Story Multi-Family Building
- 32 Residential Units
 - Mixture of 1 & 2-Bedrooms
- 64 Parking Spaces
 - 2.0 Parking Spaces per Unit
- Enhancements along all ROWs (Old Orion Ct, Orion Rd, & Maplehill Rd)
 - New & Renovated pedestrian sidewalks
 - Updated lighting
 - Tree preservation & robust additional landscaping treatments
- Updated stormwater management system
- Project Amenity Areas
 - Wetland Overlook Deck & Pergola
 - Pocket Park with seat wall & bike repair station
 - Wetland Conservation Easement



Site Plan



Old Orion Ct.
Rochester Hills, MI

**Krieger
Klatt**
Architects

ZONING ANALYSIS

The project complies with all zoning ordinance requirements

SETBACKS

- Front Yard: 15' required / 15' proposed
- Side Yards: 25' Required / 46.1' North Side + 65.6 South Side Proposed
- Rear Yard: 50' required / 113.5' proposed

BUILDING HEIGHT

- Two Stories or 30' required / 27'-6" proposed

PARKING

- Total required parking: 48 + 16 guest= 64 required and provided

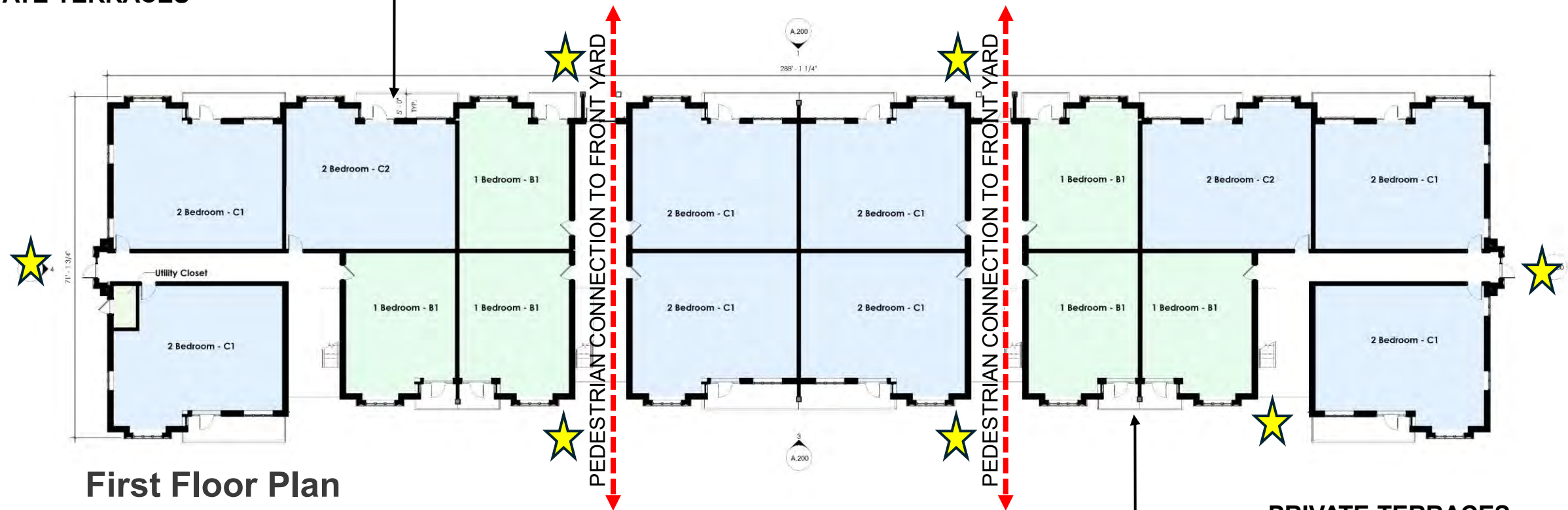
LOT COVERAGE

- .41 Acre footprint / 2.41 acre site = 17.01%

PROJECT AMENITY AREAS

- #1 Wetland Overlook Deck & Pergola: 225 SF
- #2 Pocket Park with seat wall & bike repair station: 127 SF
- #3 Wetland Conservation Easement: 24,451 SF

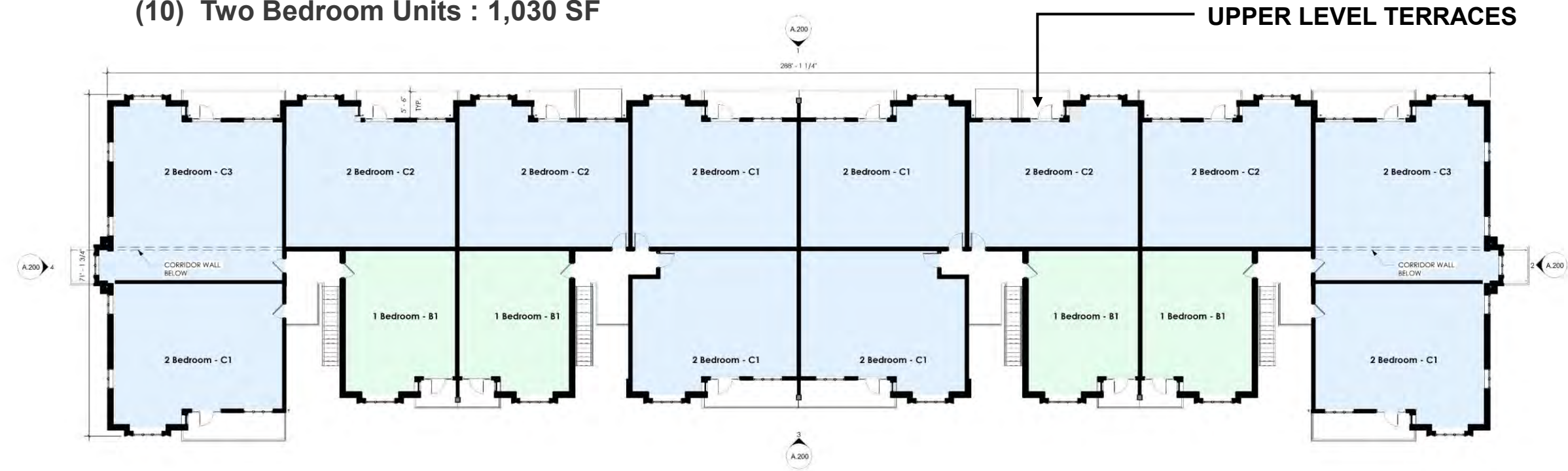
PRIVATE TERRACES



First Floor Plan

(6) One Bedroom Units : 695 SF
(10) Two Bedroom Units : 1,030 SF

PRIVATE TERRACES



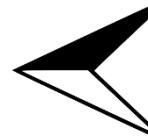
Second Floor Plan

(4) One Bedroom Units : 695 SF
(12) Two Bedroom Units : 1,030 SF

UPPER LEVEL TERRACES

Floor Plans

Old Orion Ct.
Rochester Hills, MI





ARCHITECTURAL WINDOW BOX-OUTS
FOR DEPTH (SYNTHETIC TRIM)

ASPHALT SHINGLES

BRICK

CONCEPT

Transitional design
modern yet rooted in
traditional forms

Timeless material palette

Respects character of the
surrounding homes

Gable roof projections and
inset balconies to add depth
and rhythm along street

Balconies and porches to
activate the streetscape

GRADE LEVEL PORCHES

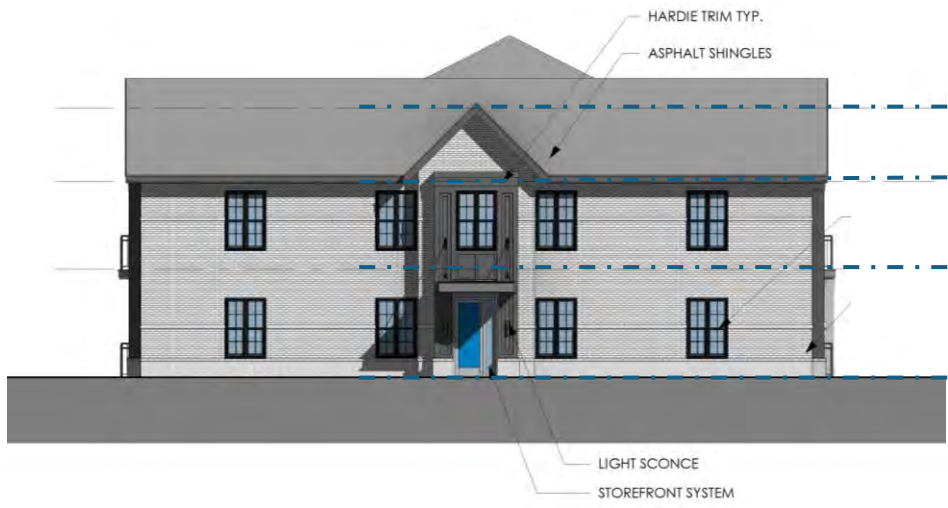
Exterior Design

Old Orion Ct.
Rochester Hills, MI

**Krieger
Klatt**
Architects

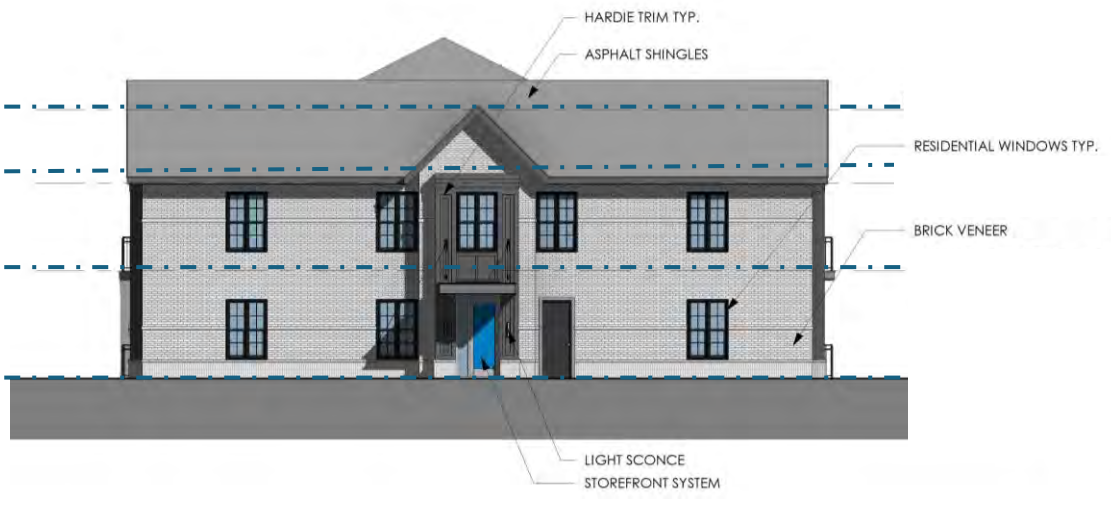


Front (East) Elevation



Left (South) Elevation

Mid Point of Roof: 27'-6"
Second Floor Ceiling : 20'-0"
Second Floor: 11'-0"
First Floor Floor: 0'-0"



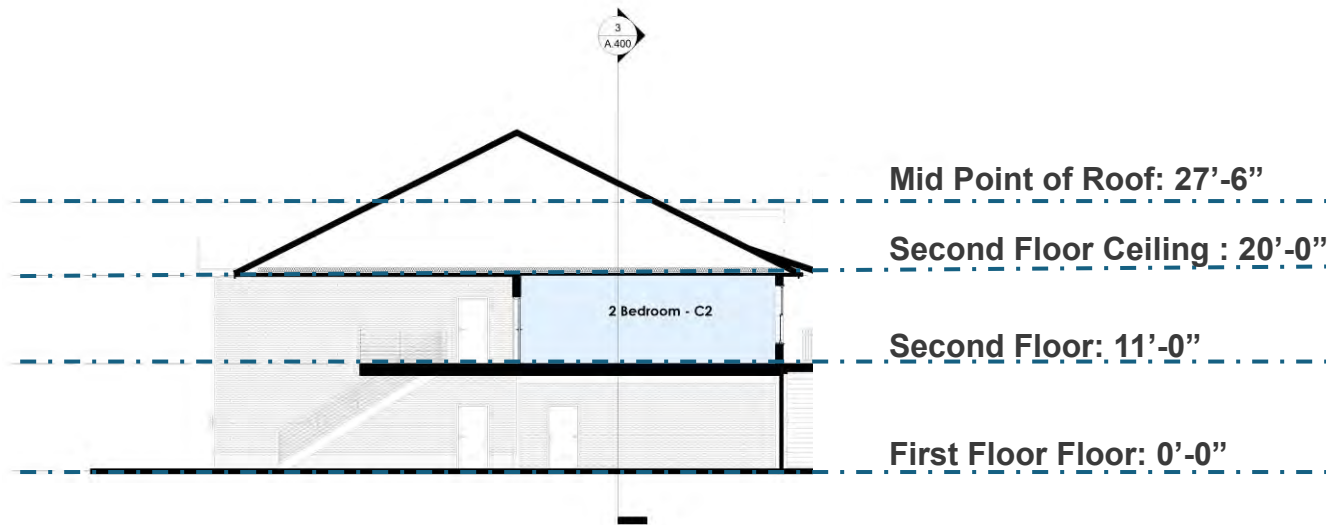
Right (North) Elevation



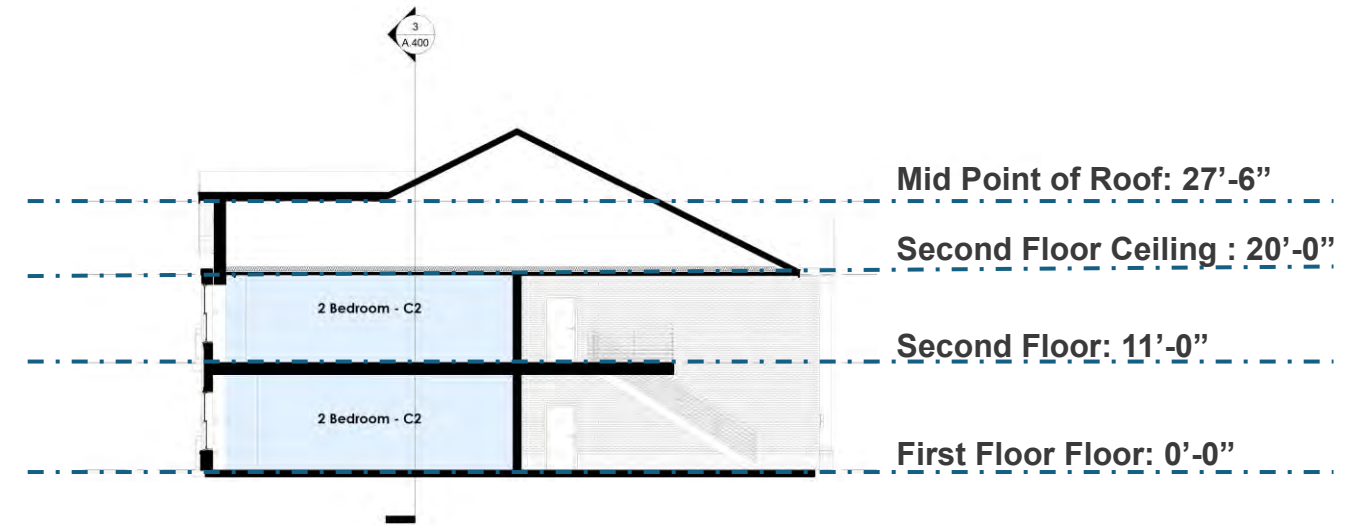
Rear (West) Elevation

Elevations

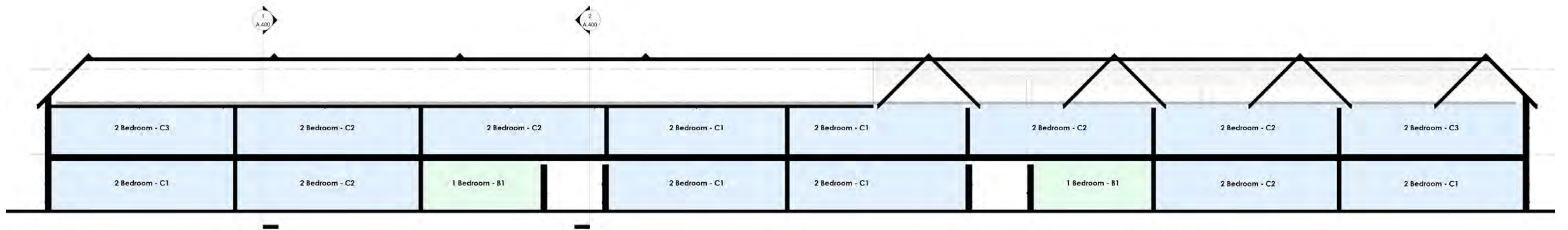
Old Orion Ct.
Rochester Hills, MI



E/W Building Section 1



E/W Building Section 2



N/S Building Section

Elevations

Old Orion Ct.
Rochester Hills, MI

**Krieger
Klatt**
Architects



Rendering from SW Corner

Old Orion Ct.
Rochester Hills, MI

**Krieger
Klatt**
Architects



Rendering from Rear Yard

Old Orion Ct.
Rochester Hills, MI

**Krieger
Klatt**
Architects



Rendering from NW Corner

Old Orion Ct.
Rochester Hills, MI

**Krieger
Klatt**
Architects



Rendering from NE Corner

Old Orion Ct.
Rochester Hills, MI

**Krieger
Klatt**
Architects



Rendering of Wetland Overlook

Old Orion Ct.
Rochester Hills, MI

**Krieger
Klatt**
Architects



Rendering of Pocket Park

Old Orion Ct.
Rochester Hills, MI

**Krieger
Klatt**
Architects



Rendering of Front Elevation

Old Orion Ct.
Rochester Hills, MI

**Krieger
Klatt**
Architects