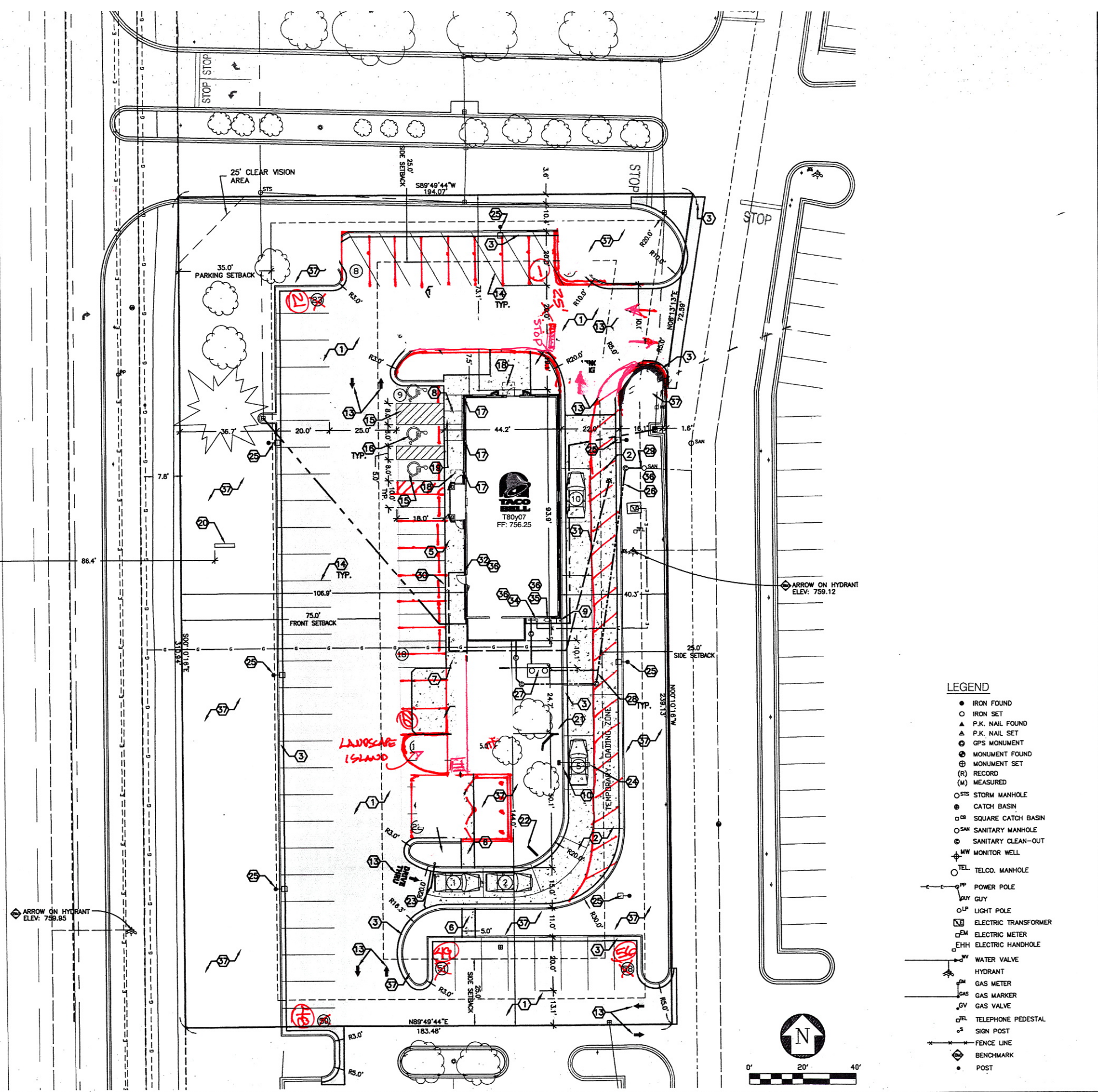


SOUTH ROCHESTER ROAD  
(150 FT. WIDE PUBLIC)



LEGEND

- IRON FOUND
- IRON SET
- ▲ P.K. NAIL FOUND
- △ P.K. NAIL SET
- ⊙ GPS MONUMENT
- ⊙ MONUMENT FOUND
- ⊙ MONUMENT SET
- (R) RECORD
- (M) MEASURED
- STS STORM MANHOLE
- ⊙ CATCH BASIN
- SQUARE CATCH BASIN
- SAN MANHOLE
- ⊙ SANITARY CLEAN-OUT
- ⊙ MW MONITOR WELL
- TEL TELCO. MANHOLE
- POWER POLE
- GUY
- LP LIGHT POLE
- ET ELECTRIC TRANSFORMER
- EM ELECTRIC METER
- EPH ELECTRIC HANDHOLE
- WV WATER VALVE
- HYDRANT
- GM GAS METER
- GAS MARKER
- GV GAS VALVE
- TEL TELEPHONE PEDESTAL
- SP SIGN POST
- FENCE LINE
- BENCHMARK
- POST

SITE PLAN 1" = 20' 12

- 2) CONSTRUCT 6-INCH CONCRETE PAVEMENT PER DETAIL 2/C2.1 AND SOILS REPORT.
- 3) CONSTRUCT 6" P.C.C. CURB & GUTTER PER DETAIL 4/C2.2
- 4) NOT USED
- 5) CONSTRUCT P.C.C. CURB EDGE SIDEWALK PER DETAIL 6/C2.1.
- 6) CONSTRUCT P.C.C. SIDEWALK PER DETAIL 7/C2.1.
- 7) DEPRESS CURBING AND RAMP SIDEWALK TO MATCH BACK OF CURB GRADE - MAX SLOPE 1:12
- 8) CONSTRUCT P.C.C. DEPRESSED CURB RAMP - MAX. SLOPE 1:12 REFER TO GRADING PLAN AND DETAILS 4/C2.1
- 9) INSTALL GUARD POST BOLLARD PER DETAIL 10/C2.1
- 10) INSTALL BOLLARD AT CURB PER DETAIL 11/C2.1
- 11) CONSTRUCT TRASH ENCLOSURE ON 8" PCC PAD PER DETAIL 16/C2.1
- 12) CONSTRUCT 140 L.F. PRIVACY FENCE PER DETAIL 18/C2.2
- 13) PAINT TRAFFIC ARROWS - WHITE PER DETAIL 1/C2.2
- 14) PAINT 4" WIDE PARKING STRIPES, WHITE REFLECTIVE PAINT
- 15) STRIPE BARRIER-FREE SPACES PER DETAIL 1/C2.2
- 16) PAINT HANDICAP SYMBOL - WHITE ON BLUE BACKGROUND (1-VAN SPACE).
- 17) ACCESSIBLE PARKING SIGN, PER DETAIL 2/C2.2 (1-VAN SPACE)
- 18) HANDICAP "SWING-SIDE" MANEUVERING SPACE AT ALL EXTERIOR DOORS. 2X MAX. SIDEWALK SLOPE, 2' TO STRIKE SIDE OF DOOR, 5' OUT FROM DOOR.
- 19) DETECTIBLE WARNING STRIPS PER ANSI A117.1/ADA GUIDELINES. WARNINGS SHALL EXTEND THE FULL WIDTH AND DEPTH OF THE RAMP.
- 20) 30 S.F. DOUBLE FACED, ILLUMINATED, MONUMENT SIGN (7 FT. OVERALL HEIGHT), BY SIGN SUPPLIER. SEE 8/L1.1. FOUNDATION BY SIGN COMPANY AND ROUGH ELECTRICAL BY G.C. UNDER SEPARATE PERMIT.
- 21) MENU BOARD, SENSOR LOOP & ORDER CONFIRMATION BOARD BY SIGN SUPPLIER. FOUNDATION AND ROUGH ELECTRICAL BY G.C. (4.0 AMPS). REFER TO DETAIL 16/C2.2
- 22) PREVIEW BOARD BY SIGN SUPPLIER. FOUNDATION AND ROUGH ELECTRICAL BY G.C. (2.2 AMPS). REFER TO DETAIL 8/C2.2
- 23) SOFFIT CLEARANCE SIGN SUPPLIED BY OWNER. INSTALLED BY G.C. REFER TO DETAIL 4/C2.2
- 24) INSTALL TIMER LOOP AT ORDER CONFIRMATION BOARD PER DETAIL 16/C2.2
- 25) 1000 WATT (208) VOLT YARD LIGHT W/SAG LENSES. LIGHT FIXTURES SUPPLIED BY OWNER, INSTALLED BY G.C. MAX. OVERALL STANDARD HEIGHT = 20'-0" SEE DETAIL 6/C2.2 AND 10/C2.2
- 26) INSTALL 134 L.F. OF 6" SDR 23.5 PVC SANITARY SEWER LEAD W/ CLEANOUTS @ 75' O.C. SEE UTILITY PLAN FOR DETAILS
- 27) INSTALL 1,000-GALLON GREASE INTERCEPTOR PER DETAIL 12/C2.2. SEE UTILITY PLAN FOR LOCATIONS OF SEWER LATERALS, AND CLEANOUTS.
- 28) CLEANOUT TO GRADE FOR BUILDING SEWERS. SEE PLUMBING PLANS AND DETAIL 9/C2.2
- 29) TIE INTO EXISTING SANITARY SEWER LEAD (FIELD VERIFY). SEE UTILITY PLAN.
- 30) NOT USED
- 31) INSTALL 146 L.F. 2" SDR 9 HDPE WATER SERVICE WITH TRACER WIRE. SEE UTILITY PLAN.
- 32) INSTALL WATER POINT OF ENTRY. SEE PLUMBING & CIVIL PLANS. (BRING UP IN STUD WALL). PROVIDE SHUT OFF VALVE AT POINT OF ENTRY.
- 33) NOT USED
- 34) ELECTRICAL MAIN SWITCHBOARD. SEE ELECTRICAL DRAWINGS.
- 35) GAS METER
- 36) COORDINATE ALL UTILITY WORK WITH UTILITY COMPANIES.
- 37) LANDSCAPE AREA. REFER TO LANDSCAPE DRAWINGS.

SIGNAGE NOTES:  
1. ALL SIGNAGE SHALL BE PERMITTED UNDER SEPARATE SIGN PERMIT BY SIGN VENDOR.

KEYED SITE NOTES 3

BUILDING INFORMATION:  
USE GROUP: A2  
CONSTRUCTION TYPE: VB  
BUILDING: 3,093 S.F. (WALK-IN COOLER/FREEZER: 174)

THE COOLER/FREEZER AREA OF THE BUILDING IS AN INCIDENTAL USE AREA PER TABLE 302.1.1 OF MICHIGAN BUILDING CODE 2003 AND IS REQUIRED TO BE SEPARATED BY A 1-HOUR FIRE BARRIER OR BE PROTECTED WITH AN AUTOMATIC FIRE SUPPRESSION SYSTEM.

FIRE LANES SHALL BE DESIGNATED BY THE FIRE CODE OFFICIAL, AND SHALL BE CONSPICUOUSLY POSTED ON BOTH SIDES OF THE FIRE LANE, WITH FIRE LAND SIGNS, SPACED NOT MORE THAN 100 FEET APART, "NO STOPPING, STANDING, PARKING, FIRE LANE", AND IN CONFORMANCE WITH THE MICHIGAN MANUAL OF UNIFORM TRAFFIC CONTROL DEVICES. FIRE PREVENTION ORDINANCE CHAPTER 58, SEC. 506.

CONSTRUCTION SITES SHALL BE SAFEGUARDED IN ACCORDANCE WITH IFC 2006 CHAPTER 14.

OPEN BURNING IS NOT PERMITTED INCLUDING THE BURNING OF TRASH, DEBRIS, OR LAND CLEARING MATERIALS. OPEN BURNING FOR WARMING OF SAND AND/OR WATER FOR THE PREPARATION OF MORTAR SHALL BE WITHIN THE CITY OF ROCHESTER HILLS BURN PERMIT GUIDELINES. FIRE PREVENTION ORDINANCE CHAPTER 58, SEC. 307.6.2 AND 307.6.2.3.

ALL INDIVIDUAL HDC SIGNS MUST BE 7 FEET IN HEIGHT FROM THE BOTTOM BLADE OF THE SIGN.

ALL ROOF TOP MECHANICAL EQUIPMENT REQUIRES SCREENING.

EXISTING TRANSFORMER PAD SHALL BE SCREENED WITH 5' TALL EVERGREEN PLANTINGS. SEE LANDSCAPE PLAN, SHEET L1.

GENERAL NOTES 4

**LANDTECH**  
Professional Surveying & Engineering  
P.O. BOX 193  
1275 MCGREGOR WAY  
GRAWN, MI 49637  
PH: 231.943.0050  
FAX: 231.943.0051  
TOLL FREE: 877.520.LAND  
www.landtechps.com

**WT**  
DEVELOPMENT  
CORPORATION

PROJECT MANAGEMENT  
10223 E. CHERRY BEND RD.  
TRAVERSE CITY, MI 49684  
CONTACT: BILL BECKETT  
PH: (231) 922-9250  
FAX: (231) 922-9257

NOT TO BE USED FOR  
CONSTRUCTION DRAWINGS

ISSUE DATE:	04.18.07
△ CITY REVIEW #1	08.24.07
△ CITY REVIEW #2	10.09.07
△ ADD ILLUMINATION PLAN	11.15.07
△	
△	
△	
△	
△	
△	

CITY FILE NUMBER:	89-144.2
BUILDING TYPE:	T80-y07
PLAN VERSION:	2007
SITE NUMBER:	292-504
STORE NUMBER:	4161

TACO BELL  
2855 S. ROCHESTER ROAD  
ROCHESTER HILLS, MICHIGAN 48307

**TACO BELL**  
T80-y07

**SITE PLAN**  
**C2**

PLOT DATE: 11.15.07