



City of ROCHESTER HILLS

1000 Rochester Hills Drive, Rochester Hills, Michigan 48309-3033

NOTICE OF SPECIAL PUBLIC MEETING SITE PLAN and REQUEST FOR TREE REMOVAL PERMIT PLANNING COMMISSION

TO ROCHESTER HILLS RESIDENTS:

NOTICE IS HEREBY GIVEN THAT THE CITY OF ROCHESTER HILLS PLANNING COMMISSION will conduct a Public Meeting In accordance with the Michigan Planning Enabling Act, Public Act 33 of 2008; a Public Meeting for a site plan request is required.

Pursuant to the Tree Conservation Ordinance, Chapter 126, Article III, of the Code of Ordinances of the City of Rochester Hills, Oakland County, Michigan, this notice shall also serve as a minimum of seven days' notice to all adjacent property owners regarding the request for a Tree Removal Permit as described below.

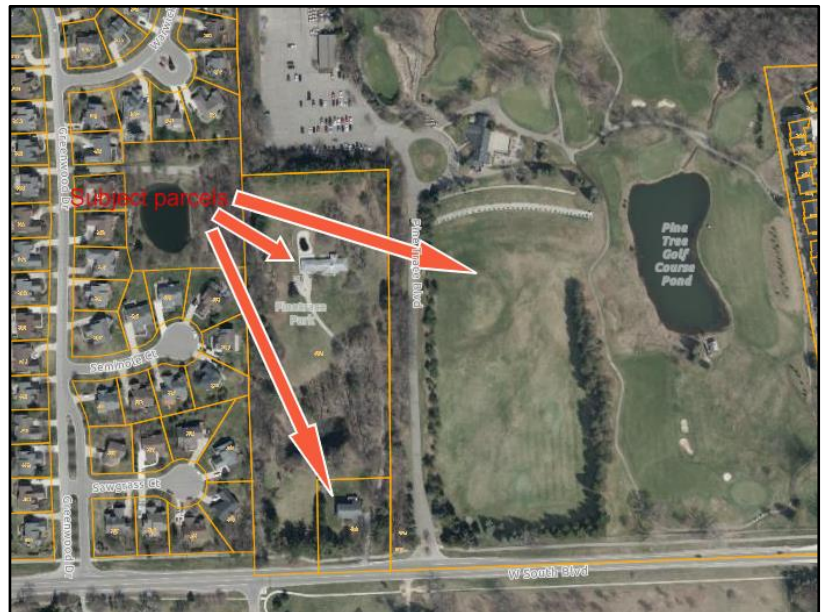
LOCATION: 3600 Pine Trace Blvd. and 3300 and 3308 South Blvd. W., Parcel Nos. 15-31-400-015, 15-31-400-017, and 15-31-400-016, respectively, located on the north side of South Blvd. W. and east of S. Adams Rd., zoned R-4 One Family Residential (Project No. J2024-0209)

REQUEST: Site Plan Approval (File #PSP2024-0024). The proposal is for Pine Trace Golf Course to relocate its existing driving range to the land located at 3300 and 3308 South Blvd. W. The plans involve the demolition of an existing residence and associated tree removals and earthwork for installation of the driving range.

REQUEST: Tree Removal Permit (File #PTP2024-0002). A request to remove two hundred thirty-seven (237) regulated trees and one hundred fourteen (114) specimen trees. The Applicant is proposing to replant the equivalent of a total of 886 replacement trees onsite pursuant to a replanting plan onsite as approved by City Staff.

APPLICANT: Michael Bylan (Applicant), Pine Trace Golf Course, 3600 Pine Trace Blvd., Rochester Hills, MI 48309

The public meeting will be held at the special Rochester Hills Planning Commission meeting on **Tuesday, September 3, 2024**, commencing at **7:00 PM**, at the Rochester Hills Municipal Offices, 1000 Rochester Hills Drive, Rochester Hills, Michigan 48309.



Plans can be viewed on the City's website through the Status of Development Projects map on the Planning & Economic Development webpage. Please contact the Planning & Economic Development Department at (248) 656-4660 with any questions during regular business hours of 8:00 a.m. to 5:00 p.m. Written comments concerning this request can be sent to the City of Rochester Hills Planning Department, 1000 Rochester Hills Drive, Rochester Hills, Michigan 48309 or emailed to planning@rochesterhills.org prior to 4:00 p.m. on the public meeting day. Comments can also be provided to the Planning Commission at the public meeting. Note: Anyone planning to attend the meeting who has need of special assistance under the American with Disabilities Act (ADA) is asked to contact the Facilities Division at (248) 656-4658 forty-eight (48) hours prior to the meeting. Staff will be pleased to make the necessary arrangements.

Deborah Brnabic, Chairperson
Rochester Hills Planning Commission
Dated this 16th day of August 2024
At Rochester Hills, Michigan

Stay informed! *Check out the [Development Project Map](#),
[Sign up for RHConnect](#) and
[Click on RH Legislative Center](#).*



RH Development Project Map
View the status of current and ongoing development projects throughout the City.



RHConnect
To receive notifications of meeting agendas and the latest news about the City of Rochester Hills via text or email.



RH Legislative Center
Agendas packets, that include the information being reviewed by the Planning Commission, are typically posted 6-7 days prior to the meeting