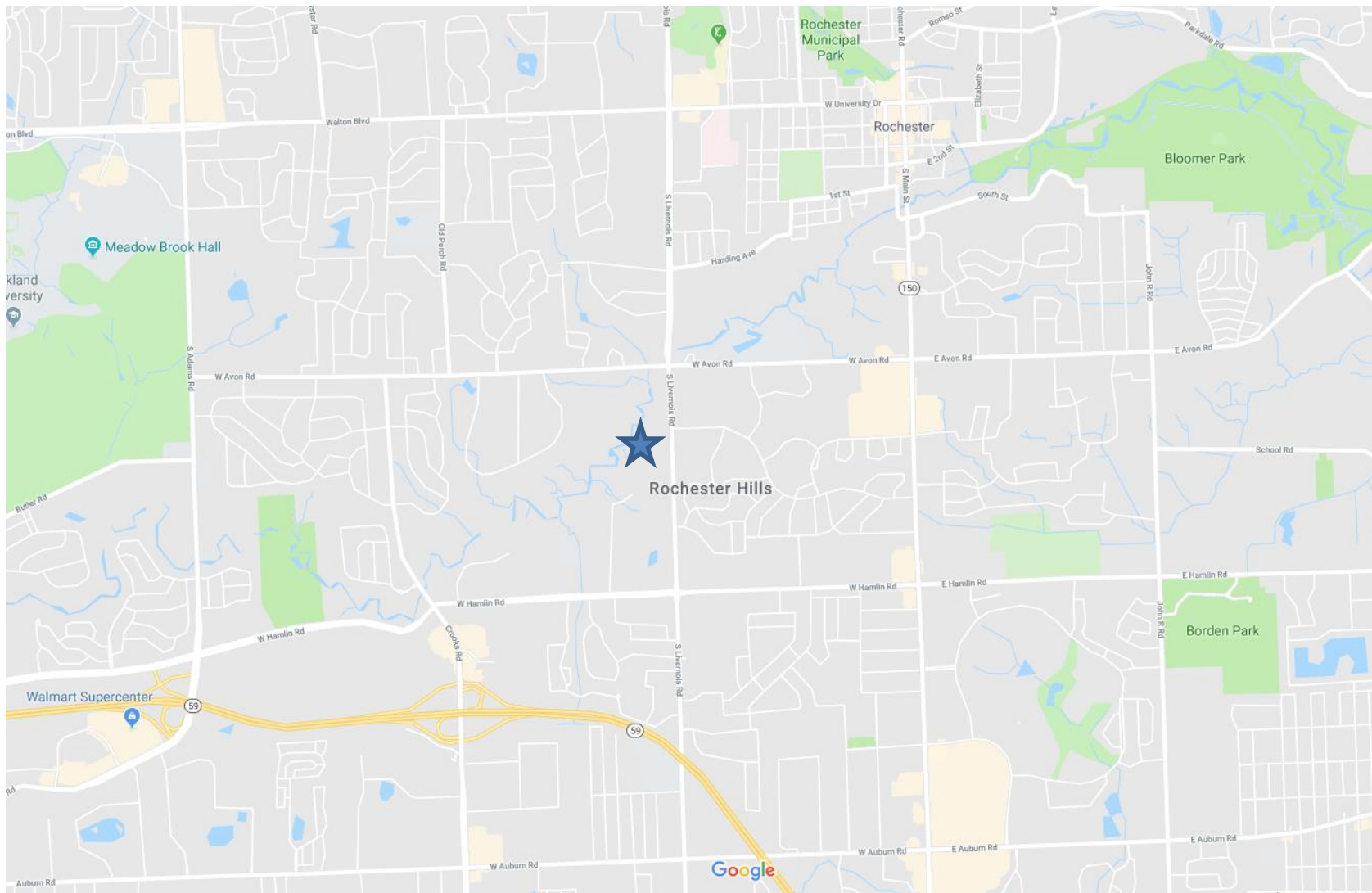


# ROCHESTER HILLS RESEARCH PARK

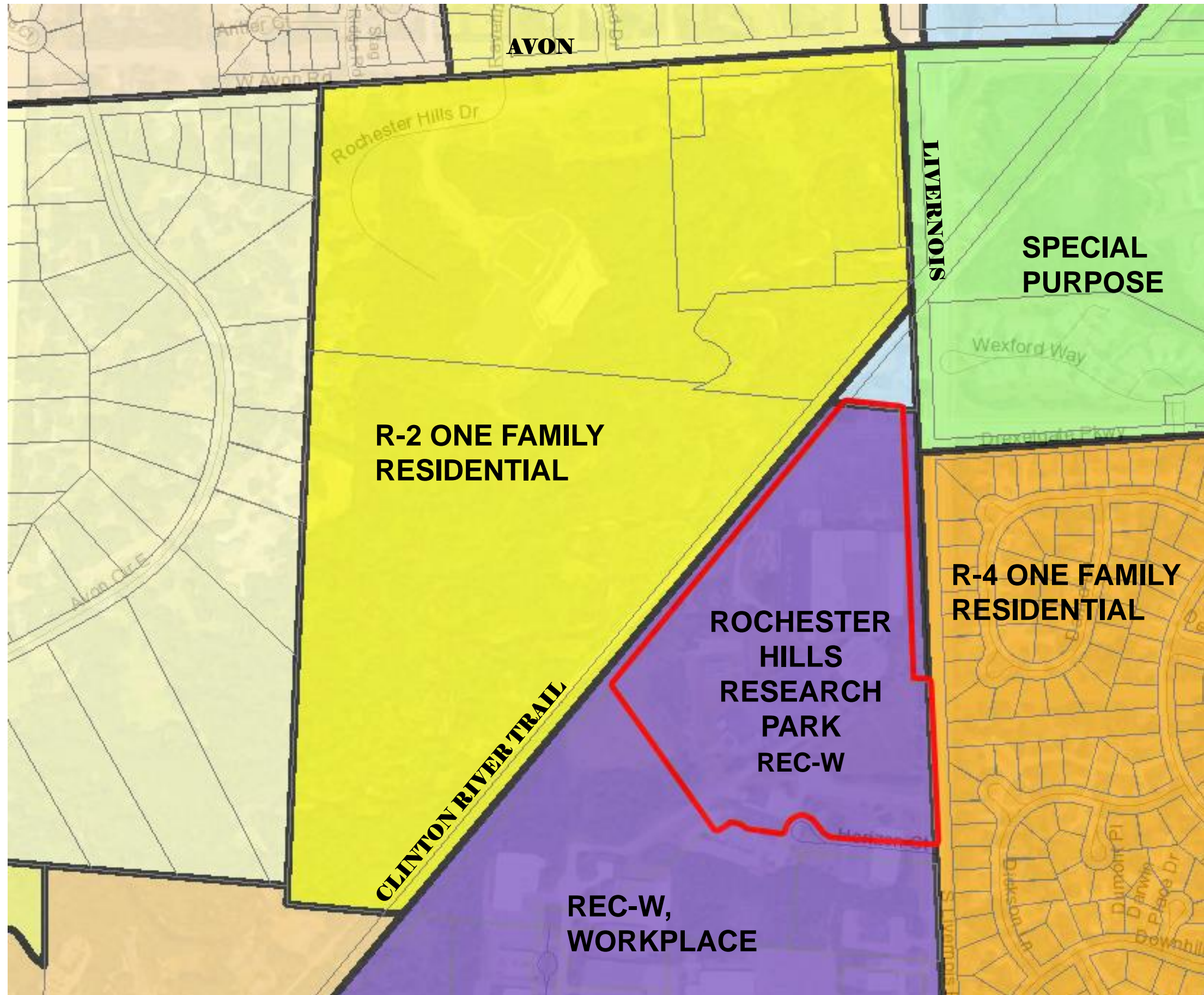
1400 S. LIVERNOIS RD.  
ROCHESTER HILLS, MI 48307

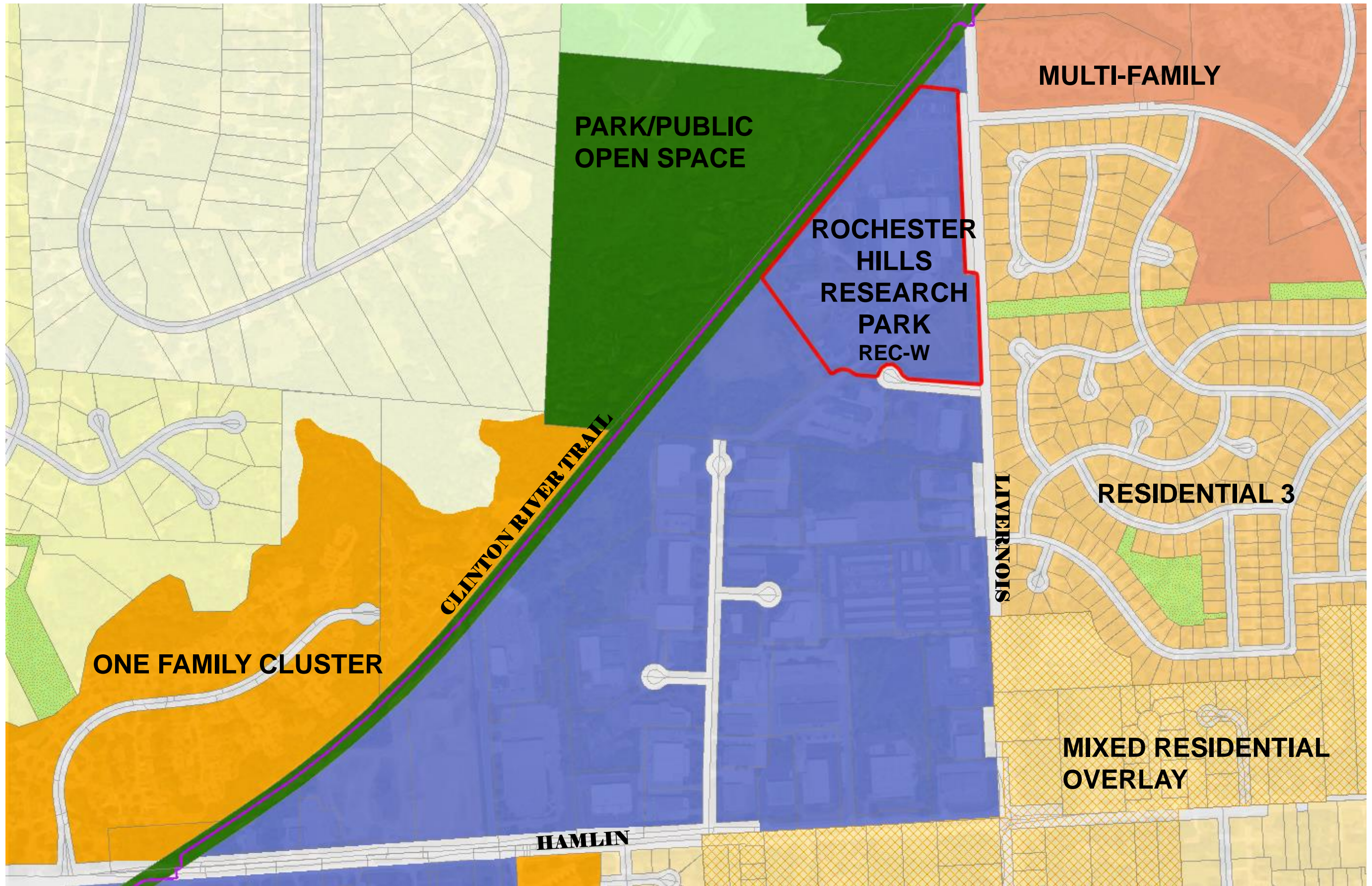


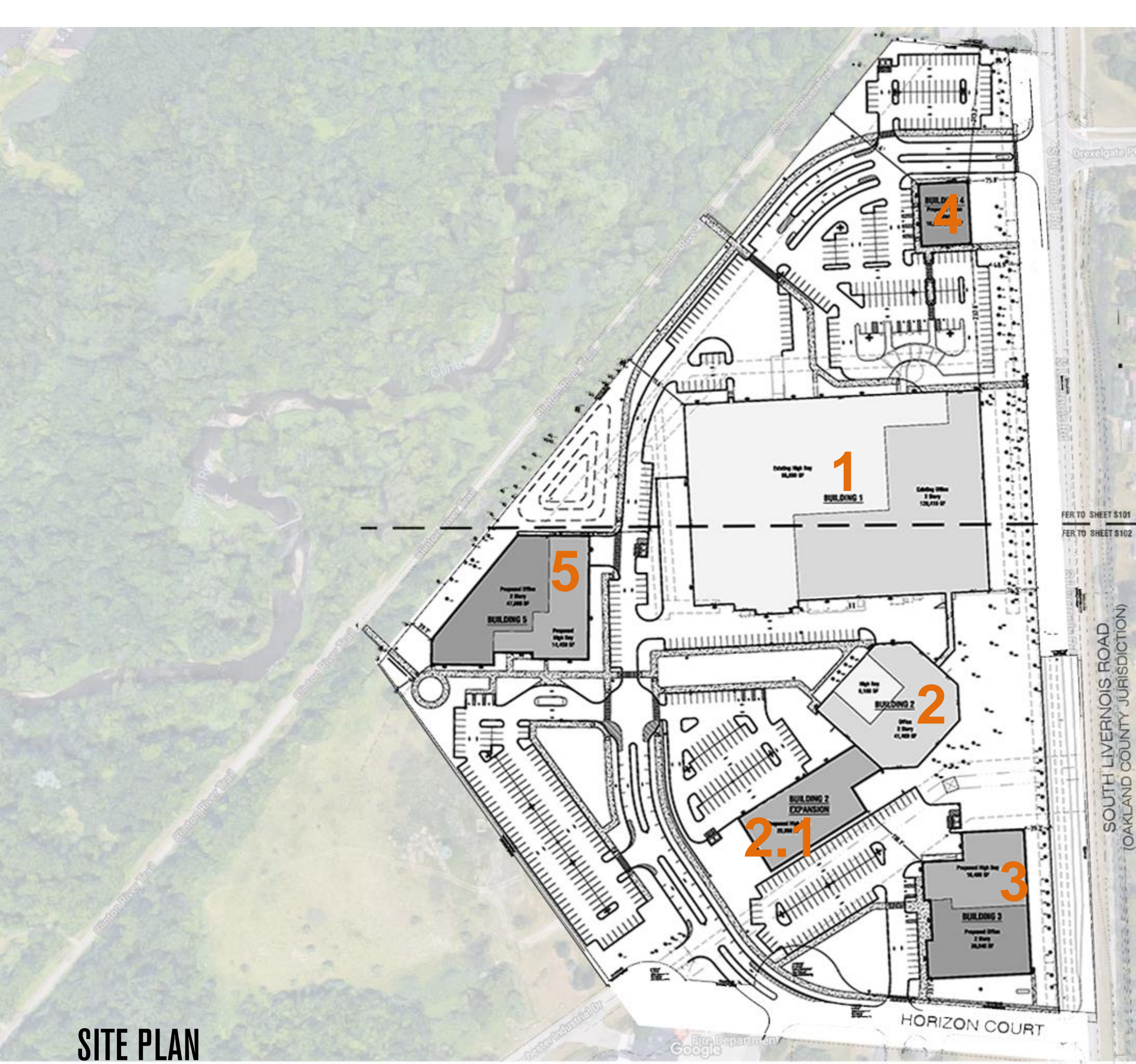


# SITE LOCATION









Building	Use	Size	Building Total
Building #1	Office	129,410 SF	217,410 SF
	High Bay	88,000 SF	
Building #2	Office	41,400 SF	71,230 SF
	High Bay	29,830 SF	
Building #3	Office	36,040 SF	52,520 SF
	High Bay	16,480 SF	
Building #4	Office	16,000 SF	16,000 SF
Building #5	Office	47,590 SF	62,040 SF
	High Bay	14,450 SF	

Total Office: 270,440 SF  
 Total High Bay: 148,760 SF  
 Total Buildings: 419,200 SF

**SITE PLAN**





**EXTERIOR ILLUSTRATION**





**EXTERIOR ILLUSTRATION**





**EXTERIOR ILLUSTRATION**

301 Walnut Blvd | Rochester, Michigan | 48307 | p 248 601 4422 | [www.designhaus.com](http://www.designhaus.com)

April 5, 2019







**EXTERIOR ILLUSTRATION**





# EXTERIOR ILLUSTRATION

301 Walnut Blvd | Rochester, Michigan | 48307 | p 248 601 4422 | [www.designhaus.com](http://www.designhaus.com)

April 5, 2019





# AERIAL PERSPECTIVE





# AERIAL PERSPECTIVE



Air and Liquid  
Systems, Inc

