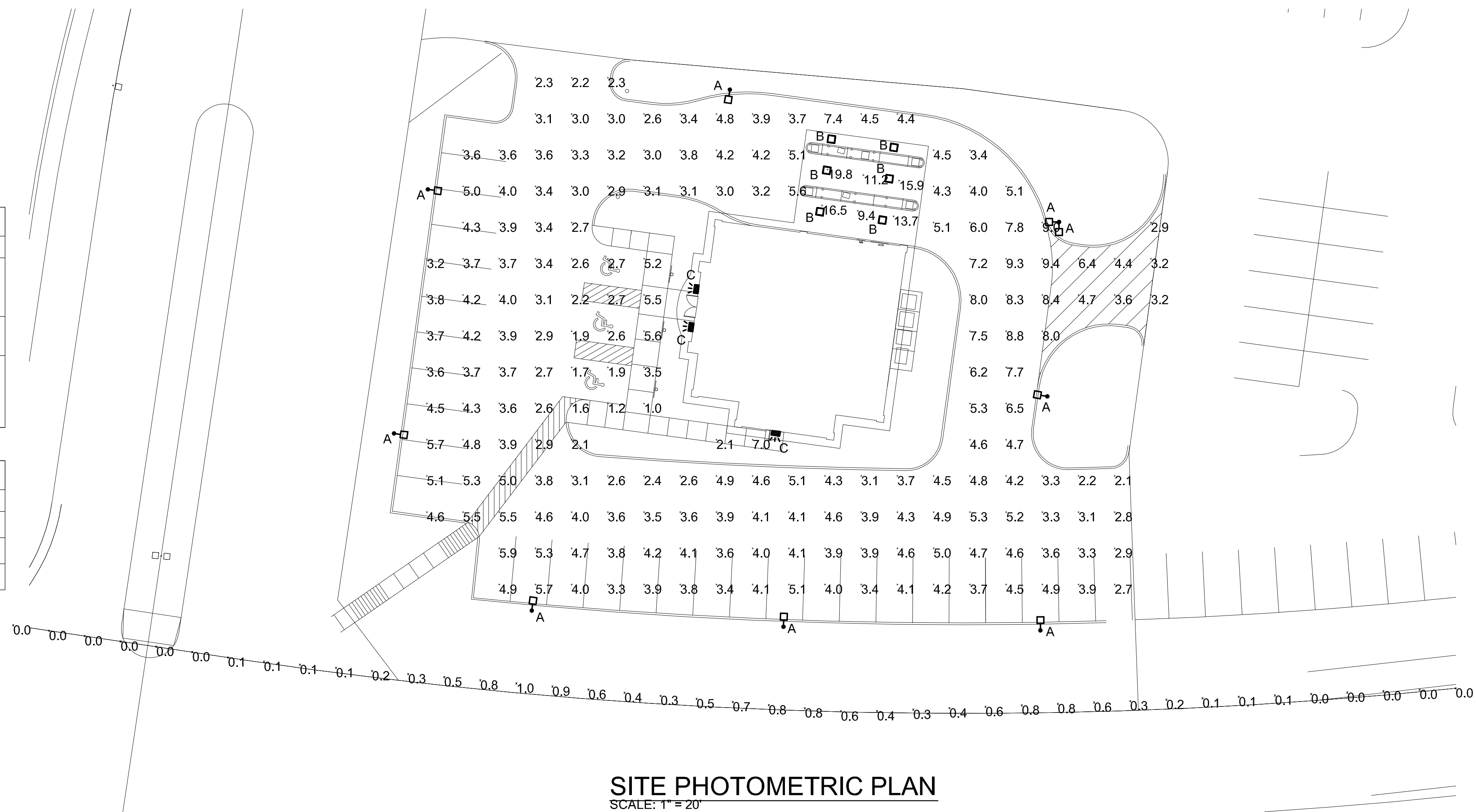


Symbol	Label	Catalog Number	Description	Lamp	File	Watts
	A	CSX2 LED 3 30B530/40K SR4 MVOLT	CSX2 LED FIXTURE WITH 3 LIGHT ENGINES, 530mA DRIVER, 4000K COLOR TEMP, TYPE 4 OPTIC, MOUNTED 20° AFG	LED	CSX2_LED_3_30B530_40K_SR4_MVOLT.ies	168
	B	2TL2 33L RW A19 D38 LP835	TLED W/ A19 LENS MOUNTED 10° AFG IN CEILING	ONE 37-WATT LED, DOWNLIGHT POS.	2TL2_33L_RW_A19_D38_LP835.ies	37.07
	C	WST LED 2 10A700/40K SR4 MVOLT	WST LED WITH 2 MODULES, 20 LEDs, 700mA DRIVER, 4000K COLOR TEMPERATURE, TYPE 4 LENS, MOUNTED 0° AFG	Outdoor Wall Pack Luminaire to IES LM-79-08, LUMINAIRE OUTPUT: 3851 Lms.	WST_LED_2_10A700_40K_SR4_MVOLT.ies	47

Description	Symbol	Avg	Max	Min	Max/Min	Avg/Min
DRIVE-UP CANOPY	+	14.4 fc	19.8 fc	9.4 fc	2.1:1	1.5:1
PARKING AND DRIVES	+	4.2 fc	9.4 fc	1.0 fc	9.4:1	4.2:1
PROPERTY LINE	X	0.3 fc	1.0 fc	0.0 fc	N/A	N/A



SITE PHOTOMETRIC PLAN
SCALE: 1" = 20'

CSX2 LED Area Luminaire

Specifications
 EPA: 1.2 ft² (0.11 m²)
 Length: 35.50" (902 mm)
 Width: 16.12" (409 mm)
 Height: 5.70" (145 mm)
 Weight (max): 59 lbs (26.8 kg)

Ordering Information EXAMPLE: CSX2 LED 4 30B700/40K SR5 MVOLT SPA DDBX

Series	Light Engine	Performance Package	Mounting	Voltage	Mounting	Options	File/Accessories
CSX2L3	3 30B530/40K SR4 MVOLT	3000K	20° AFG	120V	Flush	None	CSX2L3_3000K_20AFG.ies
CSX2L4	4 30B530/40K SR4 MVOLT	3000K	20° AFG	120V	Flush	None	CSX2L4_3000K_20AFG.ies
CSX2L5	5 30B530/40K SR4 MVOLT	3000K	20° AFG	120V	Flush	None	CSX2L5_3000K_20AFG.ies

Accessories
 B02041130E1: 10' x 10' x 10' Tenon Mounting Slipfitter*
 B02041130E2: 10' x 10' x 10' Tenon Mounting Slipfitter*
 B02041130E3: 10' x 10' x 10' Tenon Mounting Slipfitter*

Drilling
 10' x 10' x 10' Tenon Mounting Slipfitter*
 10' x 10' x 10' Tenon Mounting Slipfitter*
 10' x 10' x 10' Tenon Mounting Slipfitter*

Notes
 1. CSX2L3, CSX2L4, CSX2L5 are available with 4000K color temperature.
 2. CSX2L3, CSX2L4, CSX2L5 are available with 5000K color temperature.
 3. CSX2L3, CSX2L4, CSX2L5 are available with 6000K color temperature.
 4. CSX2L3, CSX2L4, CSX2L5 are available with 7000K color temperature.
 5. CSX2L3, CSX2L4, CSX2L5 are available with 8000K color temperature.
 6. CSX2L3, CSX2L4, CSX2L5 are available with 9000K color temperature.
 7. CSX2L3, CSX2L4, CSX2L5 are available with 10000K color temperature.

LITHONIA LIGHTING

FEATURES & SPECIFICATIONS
INTRODUCTION — The 2TL2 is a modern, rugged, and compact luminaire with high performance LED light engine and a precision optical lens for uniform light distribution. It is ideal for use in parking garages, drive-up canopies, and other areas where high performance lighting is required.
ELECTRICAL — Low voltage, 120V AC, 50/60 Hz, 100W. 100W LED light engine with 10000 hours life expectancy. 100W LED light engine with 10000 hours life expectancy.
CONSTRUCTION — Housing formed from cast aluminum. Housing is powder coated for corrosion resistance.
INSTALLATION — Simple and easy to install. Mounting hardware is included. Mounting height is 10 feet. Mounting height is 10 feet.
WARRANTY — 5 year limited warranty. Complete warranty terms located at www.lithonia.com.

Ordering Information EXAMPLE: 2TL2 33L RW A19 D38 LP835 RW100

Series	Light Engine	Performance Package	Mounting	Voltage	Mounting	Options	File/Accessories
2TL2	33L RW A19 D38 LP835	100W	10° AFG	120V	Flush	None	2TL2_33L_RW_A19_D38_LP835.ies
2TL2	33L RW A19 D38 LP835	100W	10° AFG	120V	Flush	None	2TL2_33L_RW_A19_D38_LP835.ies
2TL2	33L RW A19 D38 LP835	100W	10° AFG	120V	Flush	None	2TL2_33L_RW_A19_D38_LP835.ies

Control
 0A: On/Off
 0B: On/Off
 0C: On/Off
 0D: On/Off
 0E: On/Off
 0F: On/Off
 0G: On/Off
 0H: On/Off
 0I: On/Off
 0J: On/Off
 0K: On/Off
 0L: On/Off
 0M: On/Off
 0N: On/Off
 0O: On/Off
 0P: On/Off
 0Q: On/Off
 0R: On/Off
 0S: On/Off
 0T: On/Off
 0U: On/Off
 0V: On/Off
 0W: On/Off
 0X: On/Off
 0Y: On/Off
 0Z: On/Off

Options
 0A: 100W LED emergency battery

Accessories
 B02041130E1: 10' x 10' x 10' Tenon Mounting Slipfitter*
 B02041130E2: 10' x 10' x 10' Tenon Mounting Slipfitter*
 B02041130E3: 10' x 10' x 10' Tenon Mounting Slipfitter*

WST LED Architectural Wall Sconce

Specifications
 Luminaire: 7.84" (200 mm) Height, 16.14" (409 mm) Width, 9.94" (253 mm) Depth, 17 lbs (7.7 kg) Weight
 Optional Back Box (BBW): 4" (102 mm) Height, 5.12" (130 mm) Width, 1.12" (28 mm) Depth, 17 lbs (7.7 kg) Weight

Ordering Information EXAMPLE: WST LED 2 10A700/40K SR3 MVOLT DDBX10

Series	Light Engine	Performance Package	Mounting	Voltage	Mounting	Options	File/Accessories
WSTLED	2 10A700/40K SR3 MVOLT	3000K	0° AFG	120V	Flush	None	WSTLED_3000K_0AFG.ies
WSTLED	2 10A700/40K SR3 MVOLT	3000K	0° AFG	120V	Flush	None	WSTLED_3000K_0AFG.ies
WSTLED	2 10A700/40K SR3 MVOLT	3000K	0° AFG	120V	Flush	None	WSTLED_3000K_0AFG.ies

Emergency Battery Operation
 The emergency battery backup system is designed to provide a minimum of 90 minutes of backup power. The battery backup system is designed to provide a minimum of 90 minutes of backup power. The battery backup system is designed to provide a minimum of 90 minutes of backup power.

Notes
 1. WSTLED is available with 4000K color temperature.
 2. WSTLED is available with 5000K color temperature.
 3. WSTLED is available with 6000K color temperature.
 4. WSTLED is available with 7000K color temperature.
 5. WSTLED is available with 8000K color temperature.
 6. WSTLED is available with 9000K color temperature.
 7. WSTLED is available with 10000K color temperature.