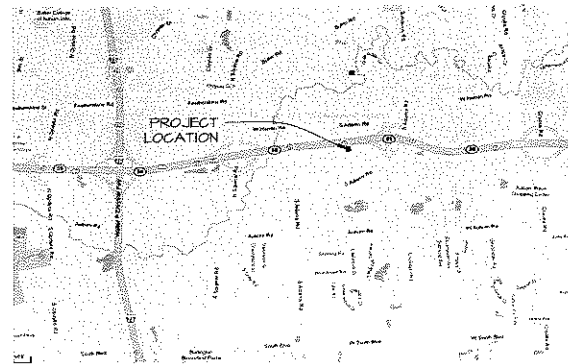


3 Site Key  
N.T.S.



2 Location Map  
N.T.S.

**OCCUPANCY NOTES:**

**PROPOSED:**

INDOOR SEATING CAPACITY = 163 SEATS  
SEASONAL PATIO SEATING CAPACITY = 56 SEATS

TOTAL MAXIMUM SEATING = 219 SEATS

TOTAL OCCUPANCY = 266 (INCLUDING EMPLOYEES)

**EXISTING:**

EXIST. OCCUPANCY = 280 (INCLUDING EMPLOYEES)  
EXIST. SEATING = 211 SEATS INDOORS

**PARKING NOTES:**

**PER CONSENT JUDGEMENT:** (Per City Planning Director, the Consent Judgement prevails over Zoning Ordinance in determining the required number of parking spaces.)

**EXISTING:**

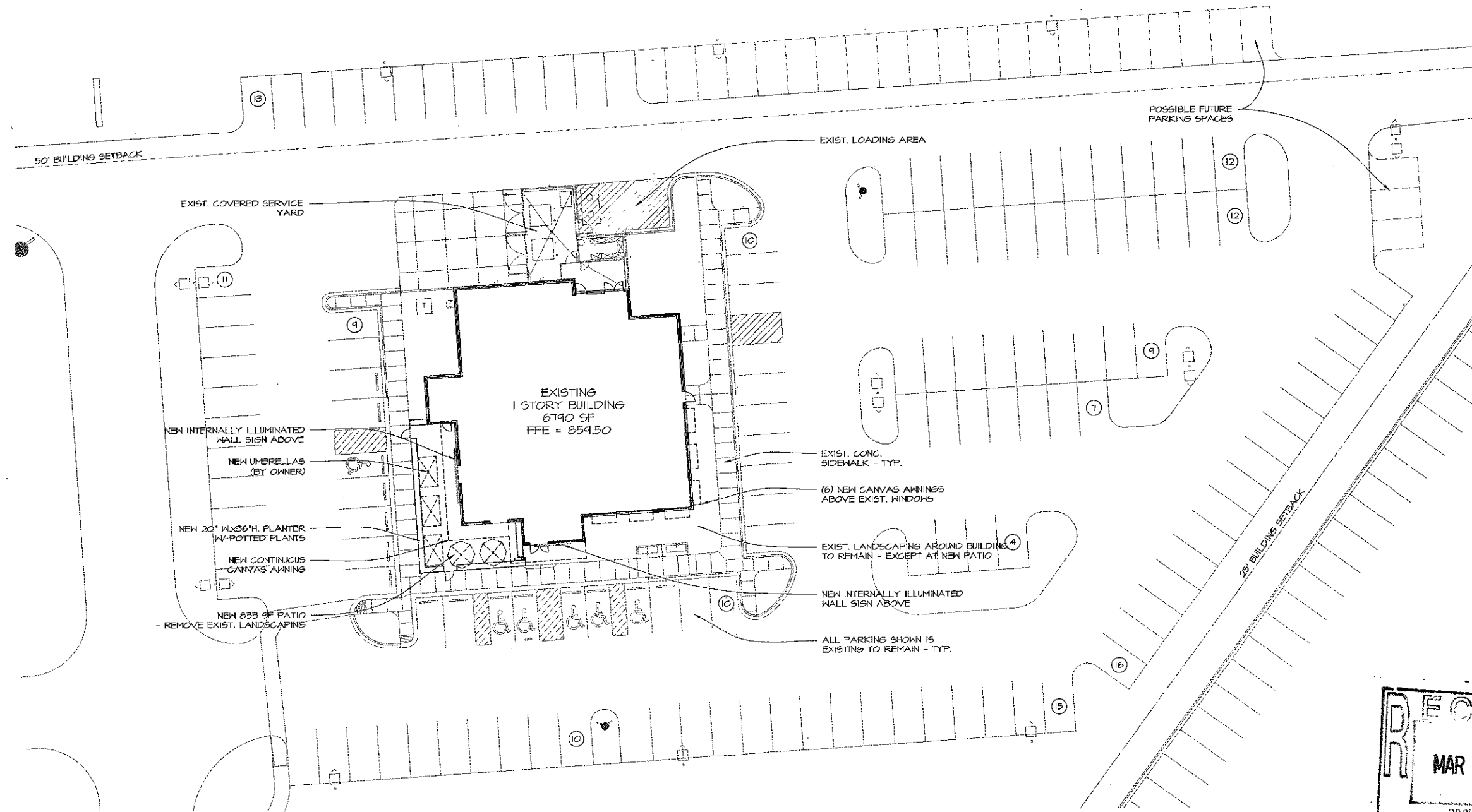
6790 SF (GROSS FLOOR AREA)  
@ 10 SPACES PER 1000 SF = 68 SPACES

**PROPOSED:**

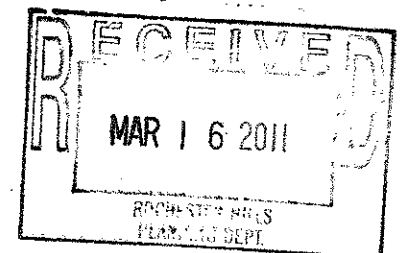
6790 SF (GROSS FLOOR AREA) + 833 SF PATIO  
@ 10 SPACES PER 1000 SF = 71 SPACES

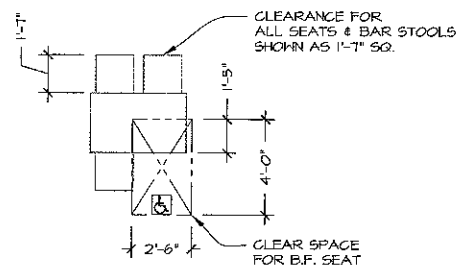
138 SPACES PROVIDED

OCCUPANT LOAD CALCULATIONS				PLUMBING REQUIREMENTS			
OCC	DESCRIPTION	ACTUAL OCC	OCC PER TABLE SEAT	Water Closets			
				M	W	M	W
A	DINING - TABLES & CHAIRS	84	84				
B	DINING - BOOTH	86	86				
C	BAR SEATING	25	25				
D	PATIO - TABLES & CHAIRS	84	84				
E	STANDING	101	101				
SUBTOTAL				280	280	280	280
F	STORAGE / MECH.	1000	1000				
SUBTOTAL				280	280	280	280
G	KITCHEN / SERVICE	1000	1000				
SUBTOTAL				280	280	280	280
H	OFFICE	1000	1000				
SUBTOTAL				280	280	280	280
TOTAL OCCUPANT LOAD				266	266	266	266
TOTAL FIXTURES REQUIRED				1.9	1.9	1.9	1.9
TOTAL FIXTURES PROVIDED				2.6	2.6	2.6	2.6



1 Site Plan





Typ. Seating Layout

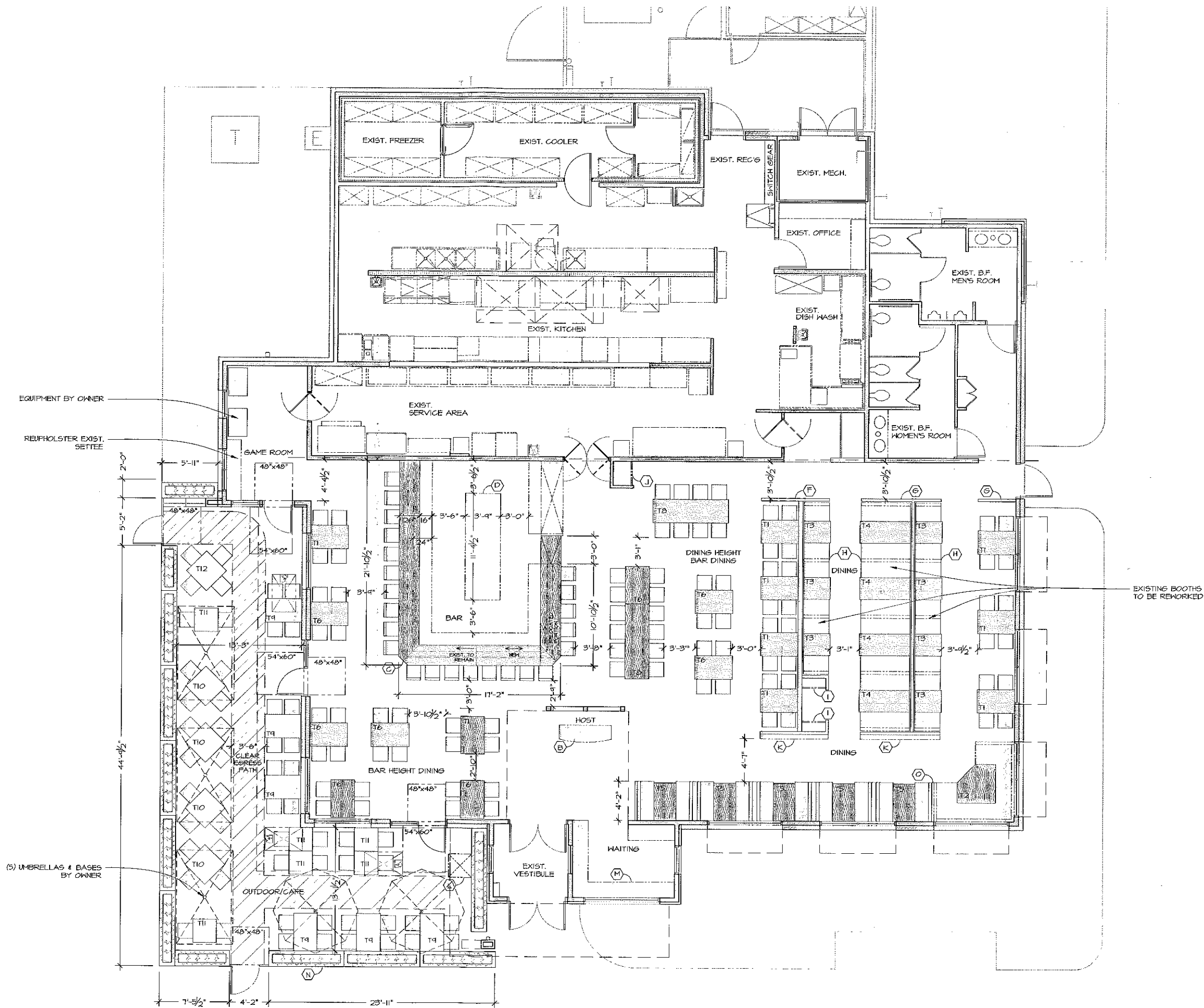
SEATING NOTES:

TOTAL SEATS =

- INDOORS
- TABLES & CHAIRS = 84
- BOOTH = 56
- BAR STOOLS = 23
- = 163 SEATS TOTAL
- PATIO
- TABLES & CHAIRS = 56 SEATS TOTAL

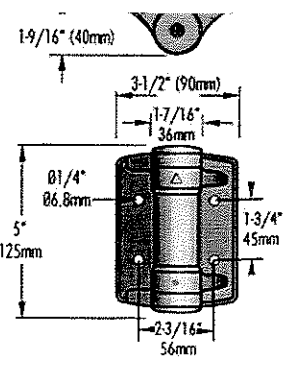
TABLE LEGEND		
MARK	QTY	DESCRIPTION
T1	10	30"x48" - DINING HT.
T2	1	CORNER BOOTH TABLE - DINING HT.
T3	7	30"x34" - DINING HT. BOOTH
T4	4	30"x64" - DINING HT. BOOTH
T5	5	30"x48" - DINING HT. BOOTH
T6	5	30"x48" - BAR HT.
T7	0	
T8	2	30"x46" - BAR HT.
T9	6	30"x46" - DINING HT. - OUTDOOR
T10	4	36" SQ. - DINING HT. - OUTDOOR
T11	6	30" SQ. - DINING HT. - OUTDOOR
T12	1	42" DIA. - DINING HT. - OUTDOOR

FIXTURE LEGEND	
MARK	DESCRIPTION
A	NOT USED
B	NEW HOST STAND
C	EXISTING BAR TOP & DIE - PORTION TO REMAIN, PORTION TO BE RELOCATED & NEW PORTION TO MATCH EXISTING
D	BACK BAR DISPLAY
E	
F	EXISTING DIVIDER WALL & END CAPS TO BE RENORKED
G	EXISTING DIVIDER WALL & END CAPS TO BE RENORKED
H	EXISTING BOOTHS TO BE RENORKED
I	EXISTING SERVICE STATIONS TO BE RENORKED
J	EXISTING SERVICE STATION TO BE RENORKED
K	NEW GRAPHIC DISPLAYS AT DIVIDER END CAPS
L	NEW SERVICE STATION AT PATIO
M	RENORK EXIST. SETTEE
N	PLANTER & GATES @ PATIO
O	NEW BOOTHS & REUPHOLSTER EXIST. CORNER BOOTH



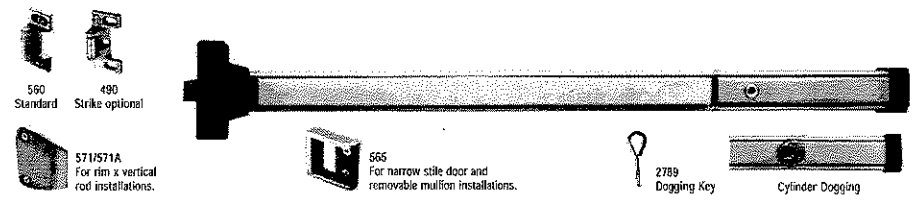
Code: MGH001007  
 Shipping Weight: 1.28 pounds  
 Color: BK  
 MFR: TCHD1A-MKZ

For heavy duty range square frame gates weighing up to 132 lbs. Works best with ornamental aluminum or steel gate and fence materials in high use areas. TRUGCLOSE safety gate hinges are molded from special glass-fiber reinforced polymer materials. These UV-stabilized materials provide strong, rust-free hinges that won't bind, sag or stretch! And they never require lubrication. The unique, spring-loaded adjuster within most TRUGCLOSE hinges allows instant incremental tension adjustment using only a screwdriver.

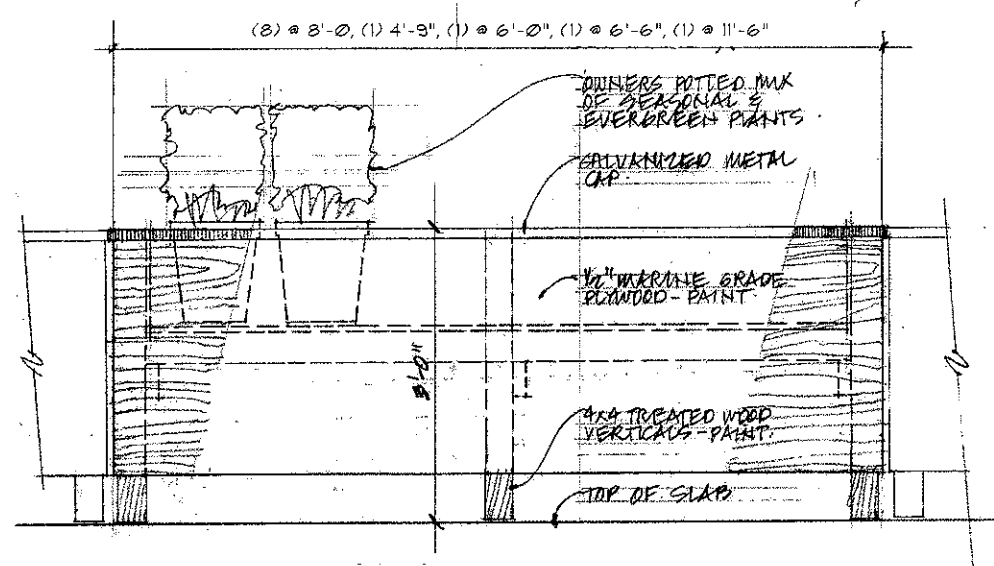


**Panic Exit Hardware**

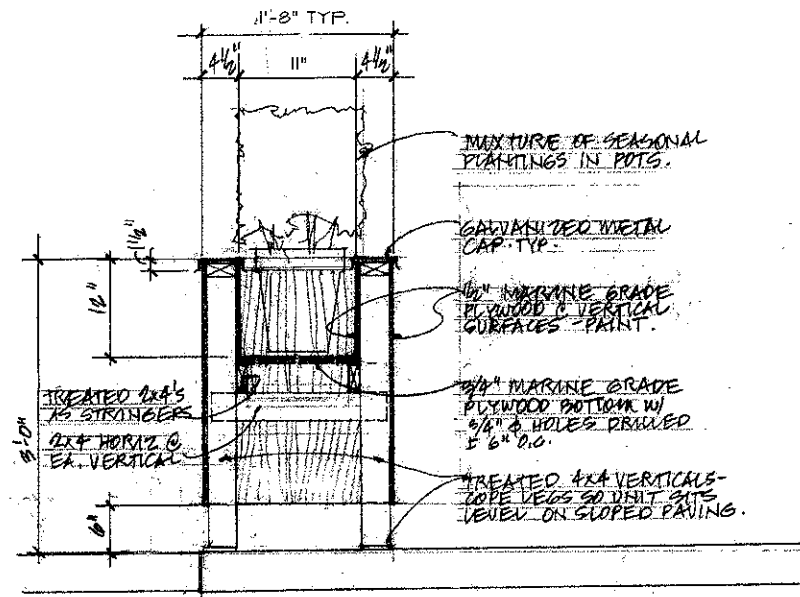
The Monarch 19-R Series Rim Device meets the demand for superior panic hardware. This economical device is designed to meet the needs for modern touchbar styling. This non-handed device covers a 161 cutout and may be used on 1/2" narrow stile aluminum doors. The "BA" (basic assembly) device is ready to accept any trim function shown on page 12.



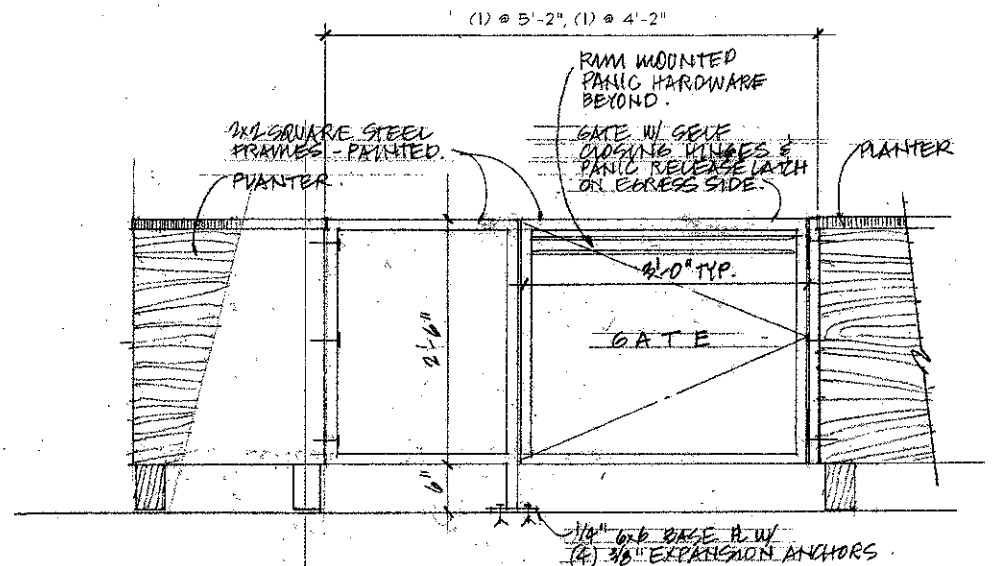
Hand:	Use-Handed
Functions:	All functions built into "BA" device. All 19 Series rim words within or separate devices. See Trim Selection Chart on pages 12 and 13.
Finishes:	Powder-coated aluminum-MIL; powder-coated dark bronze-M13; stainless steel US-113; and satin brass US-4.
Strokes:	560 standard; 561, 571/571A, 480 optional.
Latchbolt:	Stainless steel, 2" from.
Deadlocking Latchbolt:	Standard.
Dogging Features:	1-Rim rim dogging standard. No threaded parts to wear out.
Cylinder Dogging:	Specify "CD" prefix. Use 7/8" long mobile cylinder with standard 1/2" pins.
Stroke Sizes:	Short: 2-1/2" W 3/4" Long: 3/4" to 4/4". (See chart on page 15).
Doors:	1-1/2" thick, wood or metal. Specify thickness if other than 1-1/2".
Narrow Stile Doors:	Specify 565 stroke. (See chart on page 15).
Projection:	2-1/2" maximum. 1-7/8" dogging.
Fasteners:	All mounting screws are concealed. Finished with sheet metal screws. Mounting screws available, specify ANS.
Set Screws:	2-#12 (1/2") stainless steel.
ANSI:	Complies with ANSI A156.1-1991 Grade 1 standards.
Trim Kit:	For glass application: 3" back specify 5019-R-105". For other applications: 1/2" back specify 5019-R-105".
161 Cutout:	161 cutouts to 1-1/2" wide with 1/2" and 3/4" and 1" cutouts. Other trim requires cover plate.



2 Side Elevation @ Planter  
 scale: 1" = 1'-0"



3 Section @ Planter  
 scale: 1" = 1'-0"



4 Elevation @ Egress Gate  
 scale: 1" = 1'-0"

