


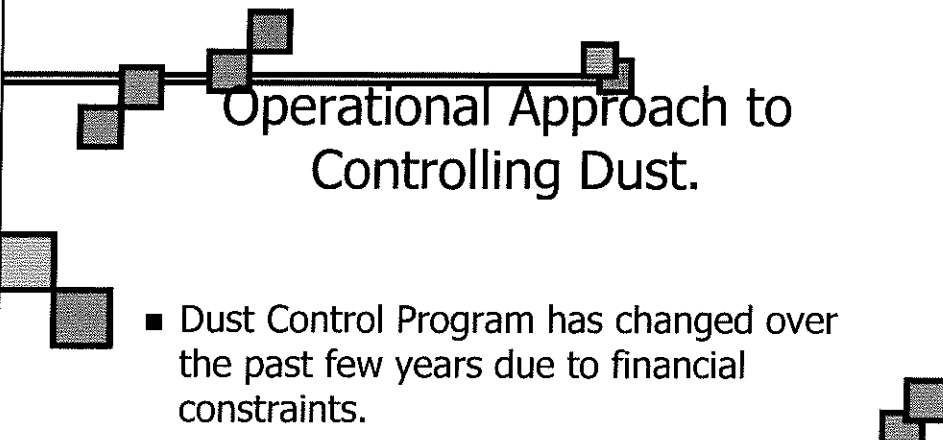
City of Rochester Hills Dust Control Program



Balancing Service Levels with Available Funding

1

5/23/2007



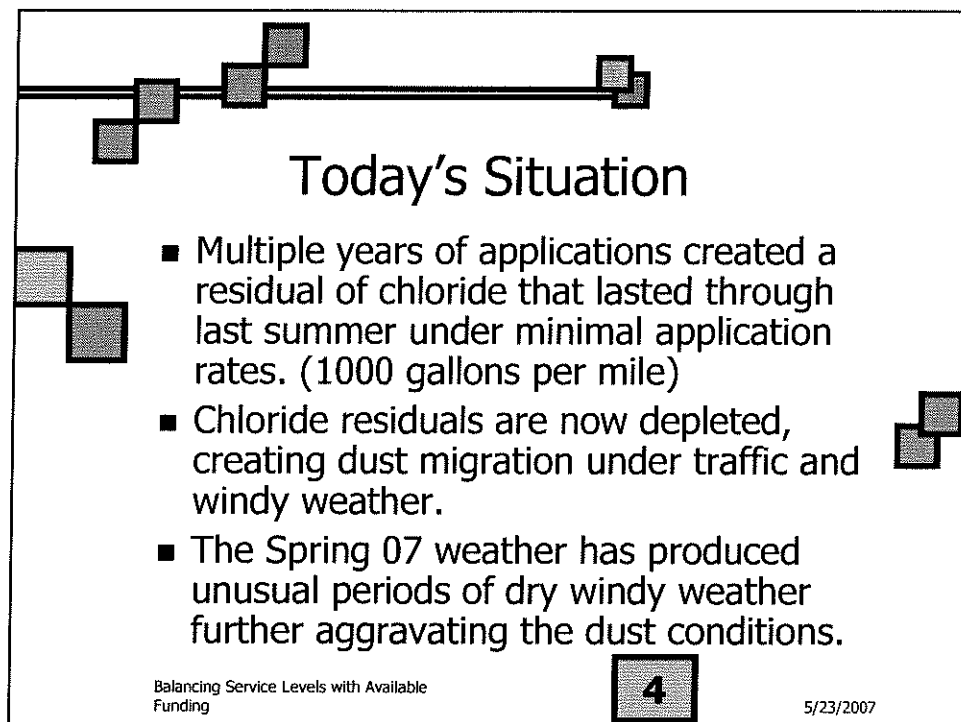
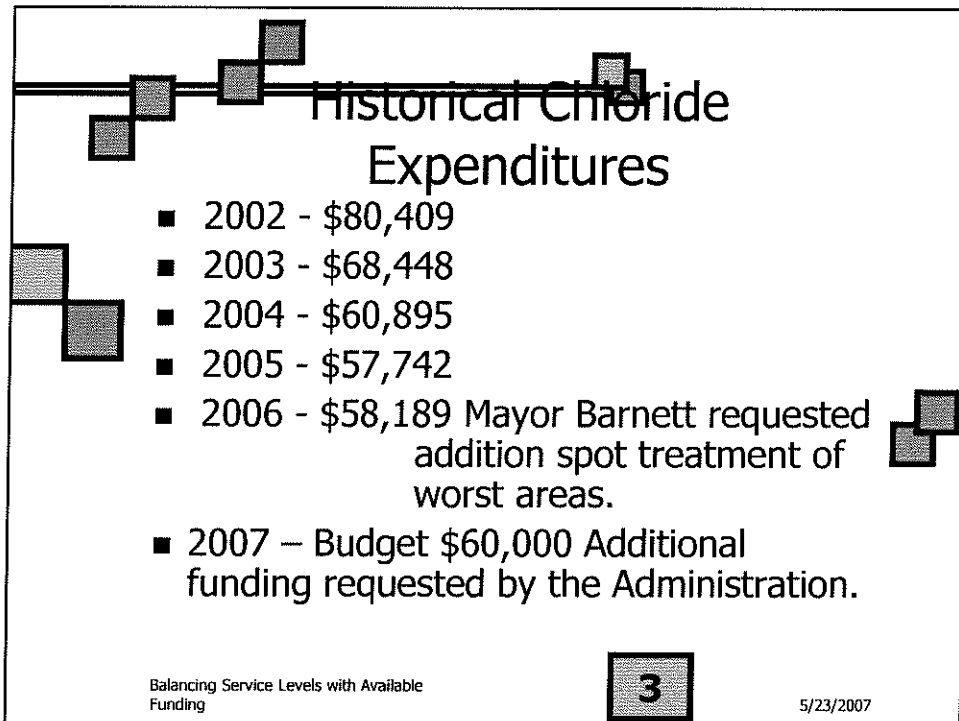
Operational Approach to Controlling Dust.

- Dust Control Program has changed over the past few years due to financial constraints.
- In 2003 the dust control program was revised to match the frequency and time table of the dust control program of the Road Commission for Oakland County

Balancing Service Levels with Available Funding

2

5/23/2007





Chloride Application Rates

- Prior years chloride applications were at 2000 gallons per mile with a concentration of 35% chloride. (RCOC uses 23% and 11% chloride).
- Current applications are applied at 1000 gallons per mile at the same 35% concentration.
- It was generally assumed that a solution to the funding crisis would be found and service levels would be improved.

Balancing Service Levels with Available Funding

5

5/23/2007



Gravel Road Maintenance Cost

- Records of Local road maintenance costs indicate that in 2006 Rochester Hills paid 4.3 times more to maintain a mile of gravel road than a paved road. This ratio has been higher in previous years.
- Roads are graded on average 8 times per year.
- Ditching, grading, chloride and gravel.

Balancing Service Levels with Available Funding

6

5/23/2007

Recommendation

- Classify roads into three categories,, Local through streets, Local dead end streets and County Local roads.
- Apply 4 applications at 1500 gal per mile to local collector streets and 4 applications of 1000 gal per mile to dead end streets.
- RCOC application rates for County Roads, 2000 gal per mile at 23% 4 times per year. Livernois, Dutton, Winkler Mill & Mead.

Balancing Service Levels with Available Funding

7

5/23/2007

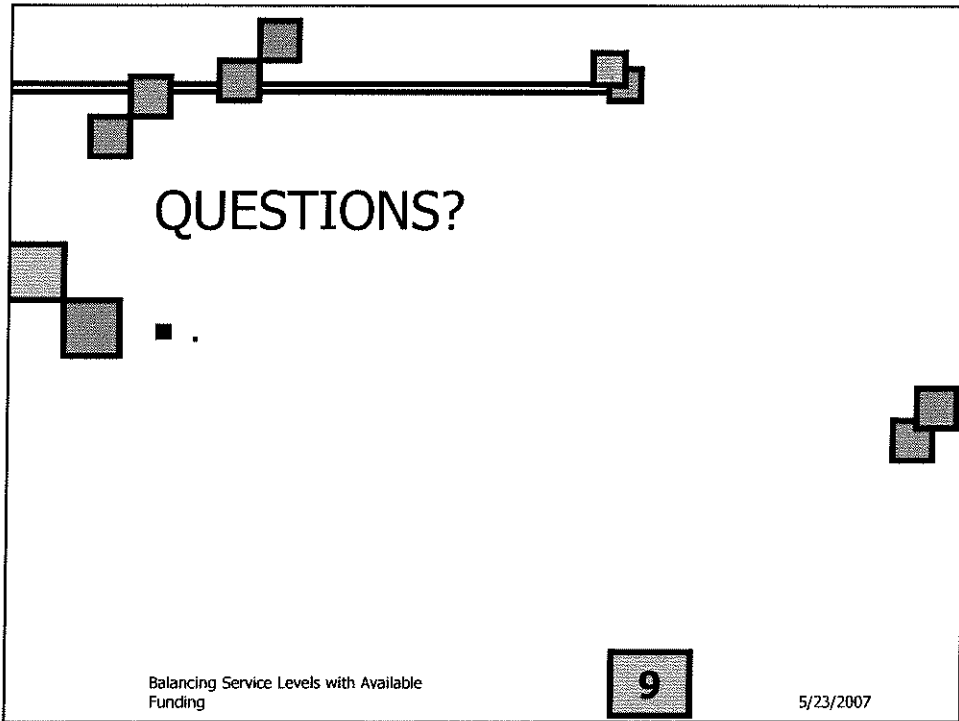
Options for Council Consideration

- Utilize monies that were budgeted (\$25,000) for the sidewalk repair program to increase the amount of chloride applied to local gravel roads.
- Create Special Assessment Districts for service improvements up and above the basis service level. A typical ½ mile road with 100 ft. lots would cost each homeowner less than \$50 per application to grade and apply chloride.
- Utilize other budgetary allowances to pay for additional chloride applications: \$11,000 designated for tree stump removal.

Balancing Service Levels with Available Funding

8

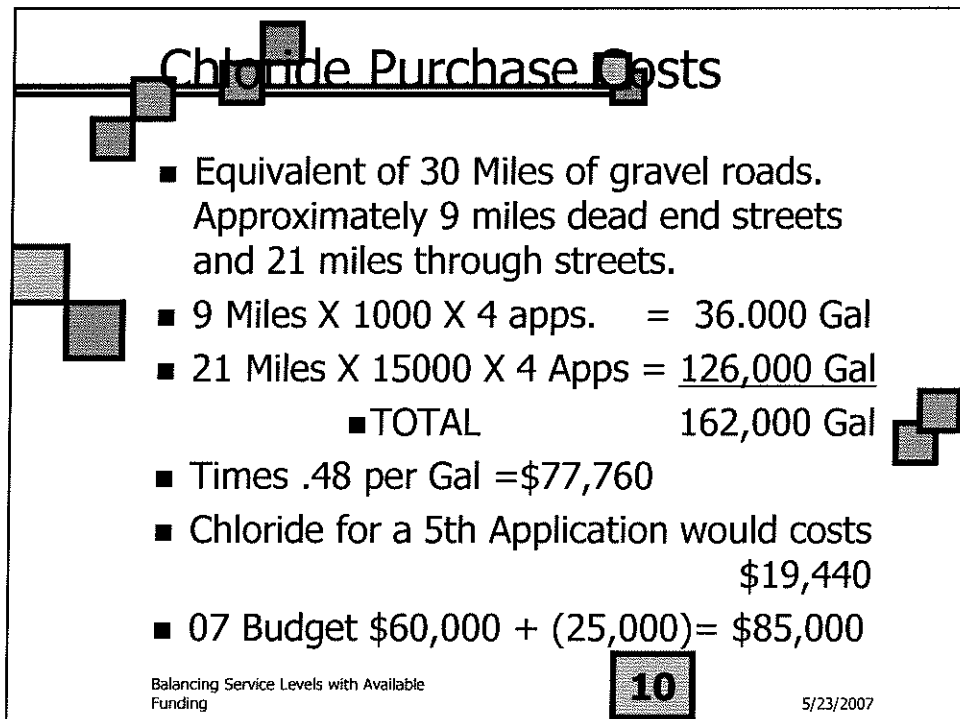
5/23/2007



QUESTIONS?

■ .

Balancing Service Levels with Available Funding 9 5/23/2007



Chloride Purchase Costs

- Equivalent of 30 Miles of gravel roads.
Approximately 9 miles dead end streets
and 21 miles through streets.
- 9 Miles X 1000 X 4 apps. = 36,000 Gal
- 21 Miles X 15000 X 4 Apps = 126,000 Gal
- TOTAL 162,000 Gal
- Times .48 per Gal = \$77,760
- Chloride for a 5th Application would cost
\$19,440
- 07 Budget \$60,000 + (25,000) = \$85,000

Balancing Service Levels with Available Funding 10 5/23/2007