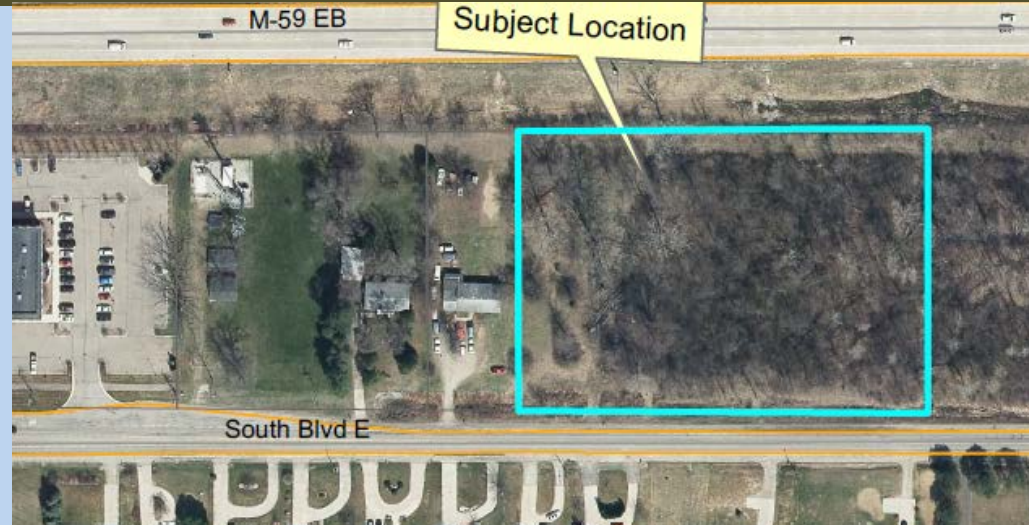




Henry Ford Pharmacy

Wetland Use Permit (16-010)

- 3.2 acres on north side of South Blvd, east of John R
- 25,667 sq. ft. office building
- Zoned O-1 Office Business
- PC recommended approval on 8/16

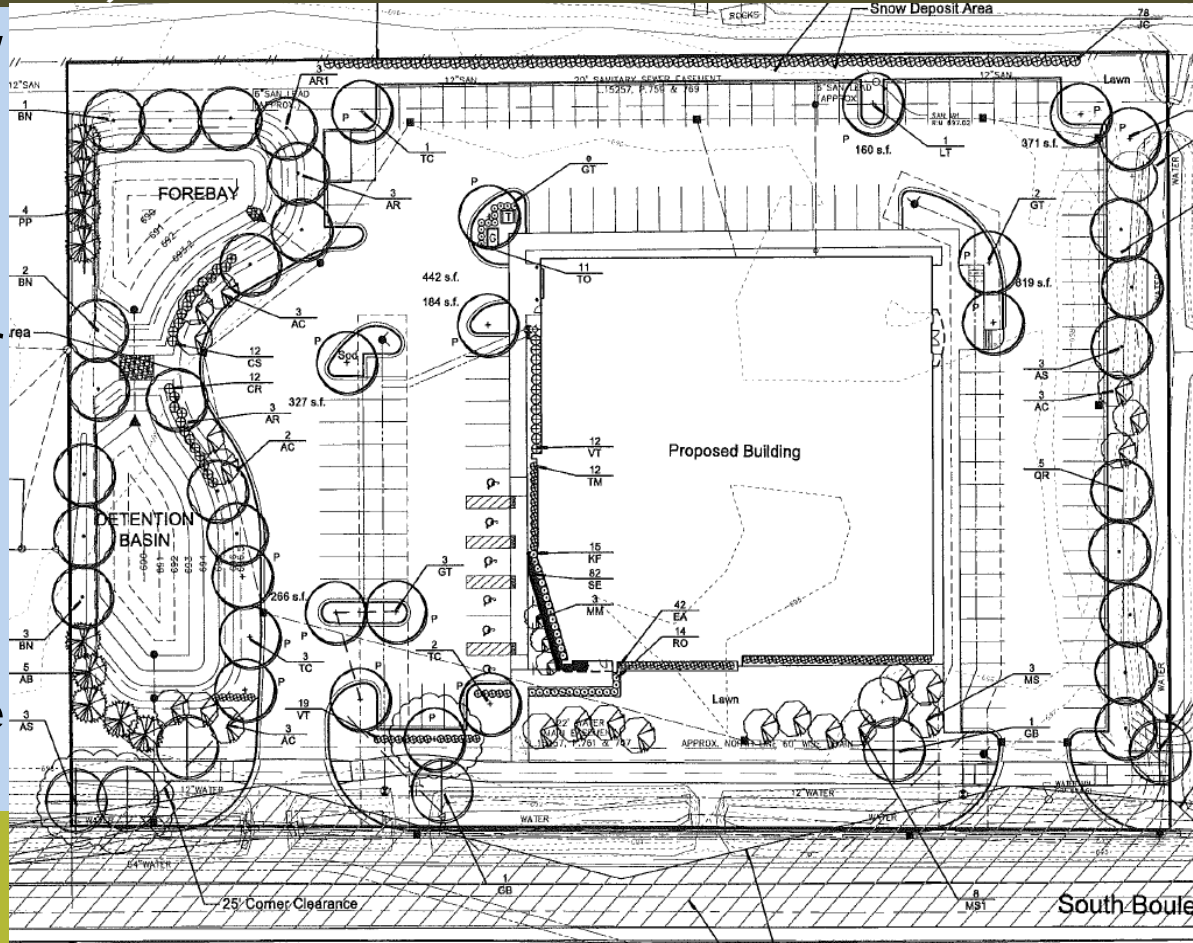




Henry Ford Pharmacy

Wetland Use Permit (16-010)

- 965 sq. ft. (0.02 acres) low quality wetland impacts
- Natural features setback modification requested (420 lf.), propose boulder retaining wall to minimize impacts
- Staff reviews recommend approval w/ conditions as plan meets applicable regulations



City Council Meeting
August 29, 2016

South Boule