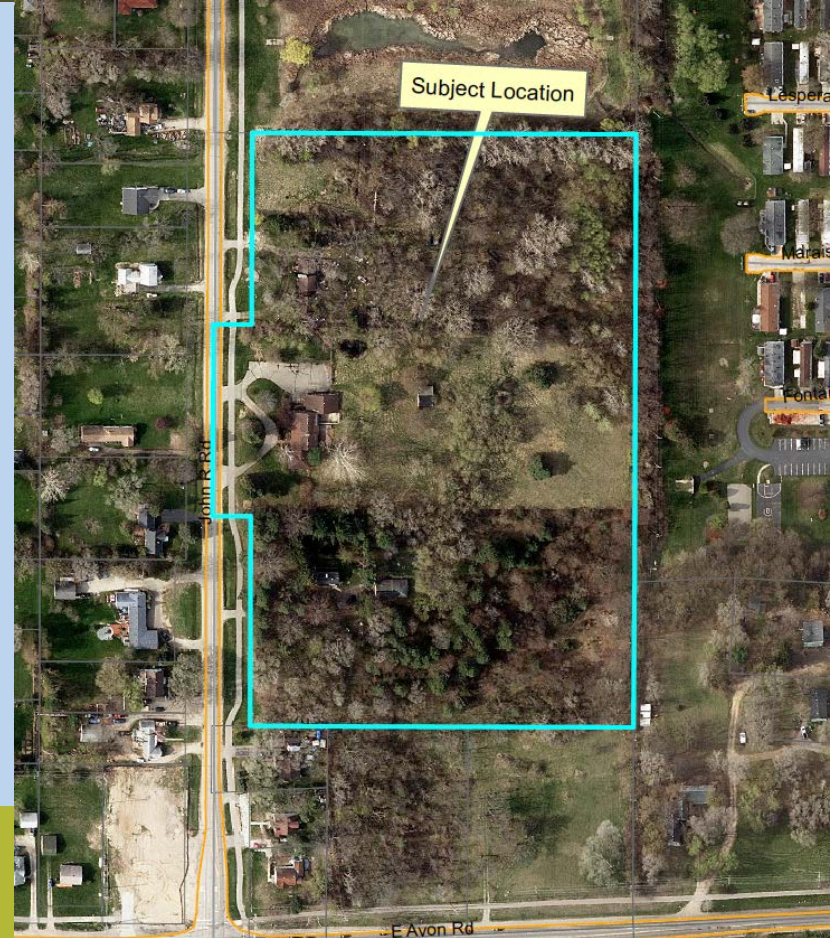




Bloomer Woods

Prelim. Site Condo Plan & Wetland Use Permit (15-006)

- 12.8 acres on E. side of John R N. of Avon Rd.
- Zoned R-3 One Family Residential w/ MR Mixed Residential Overlay
- 30 unit single family detached condos
- PC recommended approval of prelim condo plan & wetland use permit on 2/16/16




Bloomer Woods

Prelim. Site Condo Plan & Wetland Use Permit (15-006)

- Sample elevations



 American Traditional



 American Country



 Craftsman



 European Romantic



Bloomer Woods

Prelim. Site Condo Plan & Wetland Use Permit (15-006)

- 1.39 acres of wetland onsite considered low quality
- Permit to disrupt 0.33 acres (14,370 sq. ft.: 14,155 permanently & 215 temporarily)
- Still needs final condo approval from PC & CC

