

Re: Culver and Clean Express Cross Connection

1 message

Andrew Zielke <andrew@rosettabuilding.com>

To: Sara Roediger <roedigers@rochesterhills.org>

Cc: Chris McLeod <mcleodc@rochesterhills.org>, Jennifer MacDonald <macdonaldj@rochesterhills.org>, Peter Siepe <PeterSiepe@culvers.com>

Hi Sara,

Vicki and I are trying to be objective and neighbourly about the new car wash site. So, we reached out to our Culver's Corporate Support and requested an on-site meeting to review and get Culver's visual site on car wash and Culvers.

During our meeting, a car tried to cut through the barricaded cross access, made no attempt to turn back out onto Auburn Rd., but proceeded down a pedestrian bicycle path to the Meijers entrance.

When you watch the video you can see we were totally stunned, shocked, and in total disbelief as to what just happened. You see us all walk toward the bike path to see did this actually just happen?!? Just a little path.

From the beginning we have had concerns about opening the cross access; this meeting just validates them and we have to be very concerned for the safety of our guests and runners who deliver our food to you. I propose egress only from my site but after seeing this, what is going to stop them from driving into our site when you have a car carelessly driving down the sidewalk as seen in the attached video. We have so many young, old, and with mental disabilities. We are again very concerned with the opening of the cross access and the amount of traffic safety issues that it is going to generate.

So our meeting was very short and ended with a clear "NO" from Culver's to opening up the cross access in either direction.

I also want to make it clear that their business has ingress/egress access and it's a lot safer to access their site along Auburn Rd. We have a parking lot, not a road. We don't want to have a safety problem with traffic, especially when our two service type businesses are typically busy at the same time.

You have permission and please show this to the planning commission.

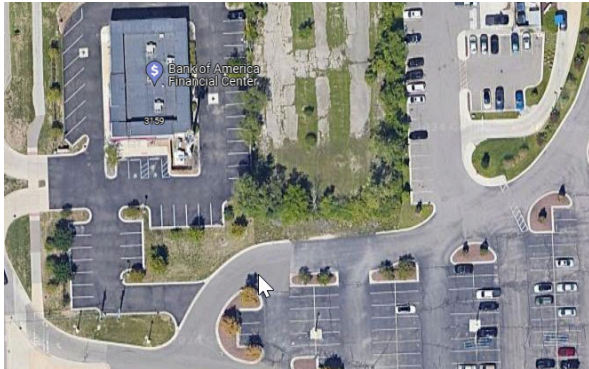
Andrew Zielke

On Thu, Mar 7, 2024 at 2:39 PM Peter Siepe <PeterSiepe@culvers.com> wrote:

Andrew,

Culver's does not support the cross access into our lot based on several issues including it's a safety issue. My question is why did Meijer/city allow curb cuts/access into their parking lot from every end user and why is this issue as that would not affect traffic flow into our lot.

Forcing cars to cut through our lot when we have food runners and additional foot traffic seems like an accident waiting to happen.


**Peter Siepe**

Real Estate Manager

Culver Franchising System, LLC.

Direct 608.644.2695

Fax 608.644.2163

E-Mail petersiepe@culvers.comwww.culvers.com Find us on Facebook Follow us on Twitter

This email is not representative of any formal site approval for use as a Culver's® Restaurant. Prior to approval, all sites will be reviewed in person and must be approved in writing by Culver Franchising System, LLC.

 Please do not print this e-mail unless you really need to.