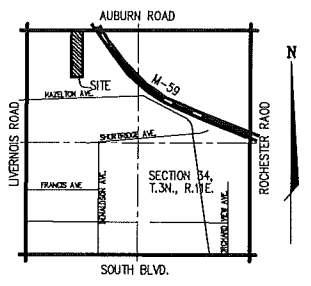
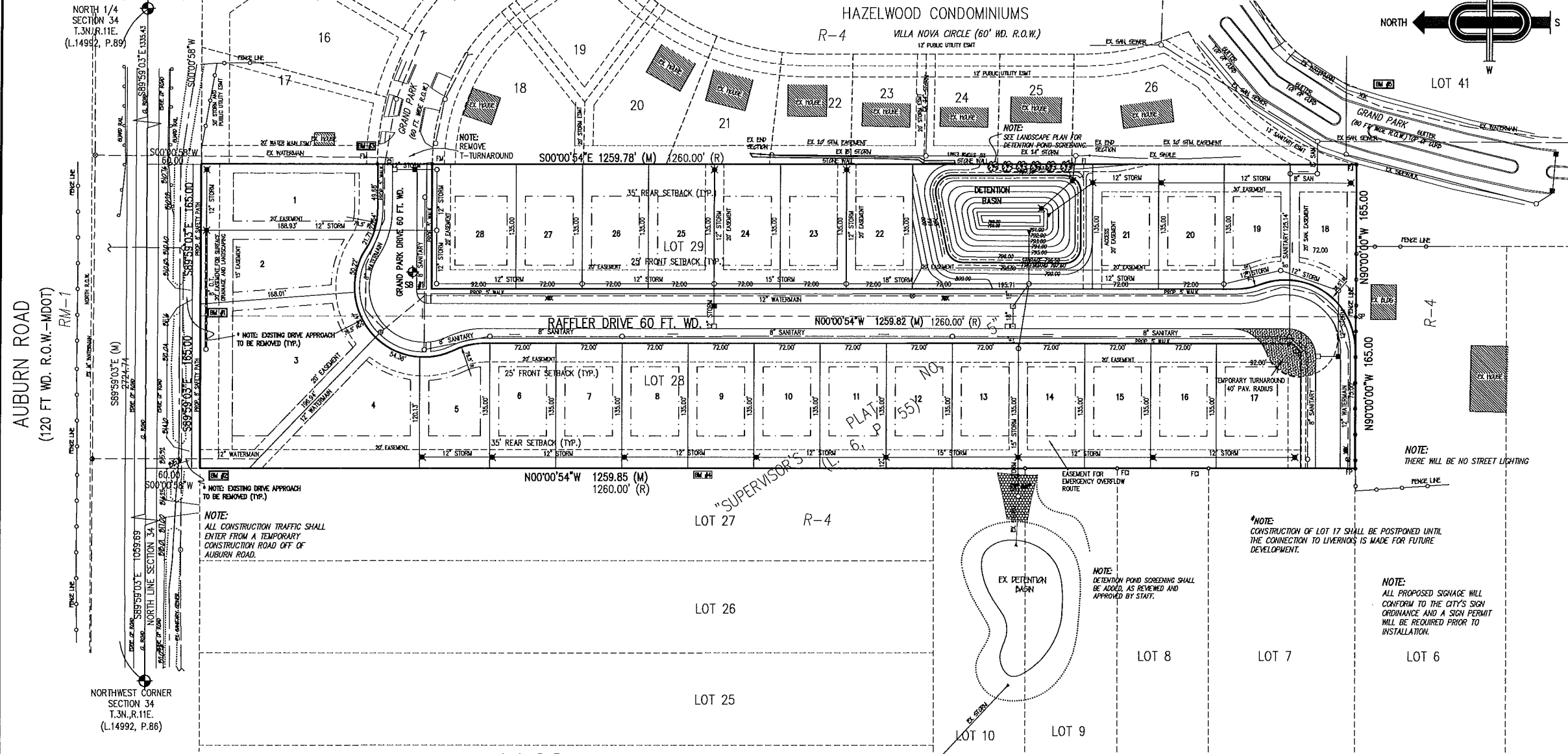


"PINE WOODS CONDOMINIUMS"

PART OF THE N.W. 1/4 OF SECTION 34,
T. 3N., R. 11E., ROCHESTER HILLS, OAKLAND COUNTY, MICHIGAN.

- NOTES:**
1. THE APPLICANT MUST OBTAIN A LAND IMPROVEMENT PERMIT AND ANY OUTSTANDING PERMITS AND EASEMENTS PRIOR TO GRADING AND CONSTRUCTION COMMENCING.
 2. PLACE DETECTIBLE WARNINGS AT SIDEWALK RAMPS LOCATED IN THE ROAD RIGHT-OF-WAYS PRIOR TO OBTAINING BUILDING PERMITS.
 3. EXHIBIT B MUST BE REVIEWED AND APPROVED BY ENGINEERING SERVICES STAFF, PRIOR TO ISSUANCE OF A LAND IMPROVEMENT PERMIT.



28 TOTAL UNITS

- NOTES:**
1. THIS SITE CONDOMINIUM IS ZONED R-4 SINGLE FAMILY RESIDENTIAL DISTRICT.
 2. LAYOUT AND DIMENSIONS ARE TENTATIVE AND SUBJECT TO MODIFICATION UPON CALCULATION OF THE CONDOPLAT.
 3. A 10 FT. (MINIMUM) EASEMENT IS AT THE FRONT OF EACH UNIT FOR PUBLIC UTILITIES UNLESS OTHERWISE NOTED.
 4. ALL UNITS WILL BE SERVED WITH PUBLIC SANITARY SEWER AND WATER MAIN.
 5. ALL SANITARY SEWERS, SERVICES AND RELATED ITEMS MUST BE DESIGNATED IN ACCORDANCE WITH THE CITY OF ROCHESTER HILLS ENGINEERING DESIGN STANDARDS.
 6. ALL STORM SEWER AND RELATED ITEMS MUST BE DESIGNED IN ACCORDANCE WITH THE CITY OF ROCHESTER HILLS ENGINEERING DESIGN STANDARDS.
 7. ALL STORM WATER BASIN MUST BE DESIGNED IN ACCORDANCE WITH CITY OF ROCHESTER HILLS ENGINEERING DESIGN STANDARDS.
 8. ALL INTERIOR STREETS WILL BE PAVED WITH CONCRETE. PAVEMENT TO BE 27 FT. WD. (BACK TO BACK).
 9. THE DEVELOPER SHALL COMPLY WITH APPLICABLE CODES AND ORDINANCES OF THE CITY OF ROCHESTER HILLS, OAKLAND COUNTY AND THE STATE OF MICHIGAN.
 10. --- INDICATES PROPOSED DRAINAGE PATTERN.
 11. EXISTING GRADES VARY OVER THE EXISTING SITE. PROPOSED STREET GRADING WILL CONFORM TO THE REQUIREMENTS OF THE CITY OF ROCHESTER HILLS.
 12. ELECTRICAL AND GAS LINES WILL BE IN THE STREET RIGHT-OF-WAY OR FRONT YARD EASEMENTS.
 13. ALL INTERIOR WATER MAIN TO BE 8" DIAMETER (MINIMUM).
 14. ALL WATER MAIN AND APPURTENANCES MUST BE DESIGNED IN ACCORDANCE WITH CITY OF ROCHESTER HILLS ENGINEERING DESIGN STANDARDS.
 15. SOIL TYPES FOR THIS SITE ARE MARLETTE SANDY LOAM AND FOX SANDY LOAM ACCORDING TO INFORMATION MADE AVAILABLE BY THE UNITED STATES DEPARTMENT OF AGRICULTURE SOIL CONSERVATION SERVICE. (WELL-SUITED FOR BUILDING DEVELOPMENT)
 16. TOPOGRAPHIC INFORMATION TAKEN FROM SURVEY BY MCS ASSOCIATES, INC.
 17. SITE WORK BEFORE AND DURING CONSTRUCTION SHALL COMPLY WITH NFPA-241.
 18. SIDEWALKS ARE REQUIRED THROUGHOUT THE SITE CONDOMINIUM AND WILL BE INDICATED ON THE ENGINEERING PLANS.
 19. EASEMENTS FOR ALL UTILITIES WILL BE PROVIDED AS REQUIRED.
 20. ALL SITE CONDOMINIUM SIGNS REQUIRE PERMITS.
 21. FIRE LANES SHALL BE DESIGNATED BY THE FIRE CODE OFFICIAL, AND SHALL BE CONSPICUOUSLY POSTED ON BOTH SIDES OF THE FIRE LANE, WITH FIRE LANE SIGNS SPACED NOT MORE THAN 100 FT. APART, AND IN CONFORMANCE WITH THE MICHIGAN MANUAL OF UNIFORM TRAFFIC CONTROL DEVICES.
 22. CONSTRUCTION SITES SHALL BE SAFEGUARDED IN ACCORDANCE WITH UNIFORM FIRE CODE ARTICLE 87.
 23. OPEN BURNING IS NOT PERMITTED INCLUDING THE BURNING OF TRASH, DEBRIS OR LAND CLEARING MATERIALS.
 24. ALL PROPOSED GRADES WILL MATCH EXISTING ELEVATIONS AT THE PROPERTY LINE.
 25. SINGLE PHASE CONSTRUCTION.
 26. ALL WORK IN THE AUBURN ROAD RIGHT-OF-WAY REQUIRE PERMIT.

LEGEND:
SHEET 1 FINAL SITE PLAN
SHEET 2 FINAL SITE DESIGN
SHEET 3 OVERFLOW DRAINAGE
SHEET 4 TOPOGRAPHIC SURVEY
SHEET 5 AUBURN ROAD SURVEY
SHEET 6 TREE SURVEY PLAN
SHEET 7 TREE PRESERVATION PLAN
SHEET L1 LANDSCAPE PLAN
SHEET L2 LANDSCAPE PLAN

PROPRIETOR:
L & R HOMES INC.
2450 WALTON BOULEVARD
SUITE 203
ROCHESTER HILLS, MICHIGAN, 48309
TELEPHONE (248) 373-5983

AUTHORIZED REPRESENTATIVES:
LORENZO RANDAZZO
VITO RANDAZZO

PREPARED BY:
JOHN C. WRIGHT, P.E.
PROFESSIONAL ENGINEER NO. 51423
44444 MOUND ROAD
SUITE 100
STERLING HEIGHTS, MICHIGAN 48314
TELEPHONE (586) 726-6310

ZONING REQUIREMENTS

ZONE	R-4
MINIMUM CORNER UNIT WIDTH	92 FT
MINIMUM UNIT WIDTH	72 FT
MINIMUM UNIT AREA	8,640 SQ FT
MINIMUM SIDE YARD	10 FT
MINIMUM TOTAL SIDE YARD	20 FT
MINIMUM REAR YARD	35 FT
MINIMUM FRONT YARD	25 FT
(UNIT AVERAGE CONCEPT USED)	
NET DENSITY	28 UNITS/9.544 ACRES = 2.93 UNITS/ACRE < 3.4 UNITS/ACRES (ORDINANCE 20.01a.1)

UNIT AREAS

UNIT	UNIT WIDTH (FT.)	AREA (SQ. FT.)
1	72.18	13,818
2	72.00	12,860
3	72.00	24,822
4	72.00	15,898
5	76.64	9,784
6	72.00	9,720
7	72.00	9,720
8	72.00	9,720
9	72.00	9,720
10	72.00	9,720
11	72.00	9,720
12	72.00	9,720
13	72.00	9,720
14	72.00	9,720
15	72.00	9,720
16	72.00	9,720
17	92.00	12,379
18	79.93	10,258
19	72.00	9,403
20	72.00	9,720
21	72.00	9,720
22	72.00	9,720
23	72.00	9,720
24	72.00	9,720
25	72.00	9,720
26	72.00	9,720
27	72.00	9,720
28	92.00	12,381
UNIT AVERAGE	10,939	

LEGAL DESCRIPTION: Lot 28

Part of the NW 1/4 of Section 34, T.3N., R.11E., Rochester Hills, Oakland County, Michigan, being more particularly described as follows:
Lot 28 of "Supervisor's Plat No. 5," as recorded in Liber 6, of Plots, Page 55, Oakland County Records.

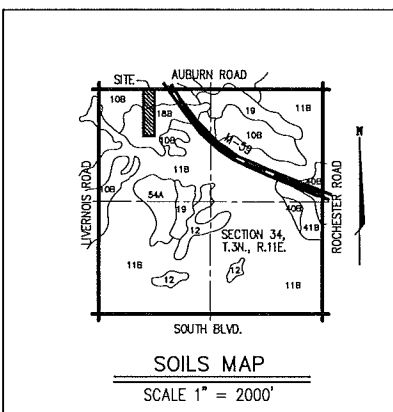
Subject to the rights of the public and any governmental unit in any part of land taken thereof, used or deeded for street, road or highway purposes.

LEGAL DESCRIPTION: Lot 29

Part of the NW 1/4 of Section 34, T.3N., R.11E., Rochester Hills, Oakland County, Michigan, being more particularly described as follows:
Lot 29 of "Supervisor's Plat No. 5," as recorded in Liber 6, of Plots, Page 55, Oakland County Records.

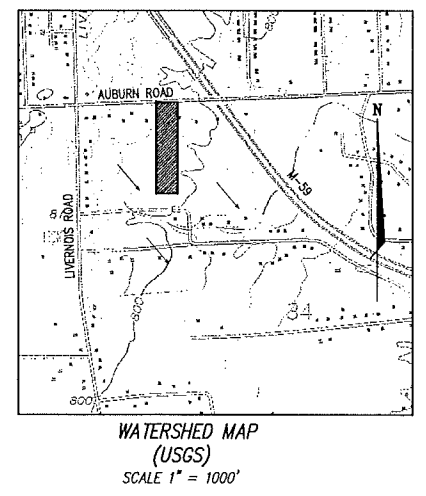
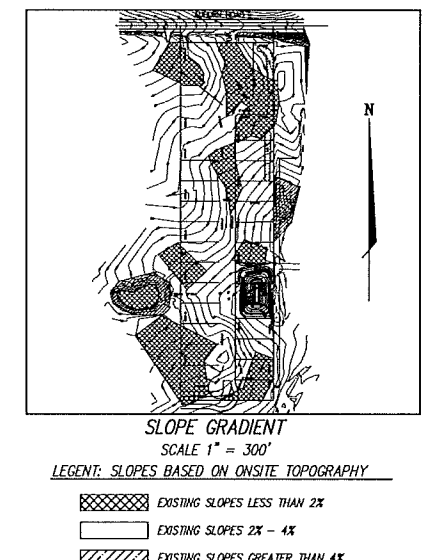
Subject to the rights of the public and any governmental unit in any part of land taken thereof, used or deeded for street, road or highway purposes.

- BENCHMARK DESCRIPTIONS**
1. PK AND WASHER NORTH FACE OF UTILITY POLE. LOCATED APPROXIMATELY AT THE MIDDLE OF NORTH PROPERTY LINE @ HOUSE #713. ELEV. 811.64
 2. UTILITY POLE LOCATED AT NORTHWEST CORNER OF PROPERTY @ HOUSE #745. ELEV. 816.73
 3. ARROW TOP HYDRANT LOCATED THE END OF GRAND PARK DRIVE. ELEV. 810.18
 4. MAG EAST FACE ON 19 IN OAK. LOCATED ±600 FT. FROM CENTERLINE OF AUBURN ROAD ON WEST PROPERTY LINE. ELEV. 810.96
 5. ARROW TOP HYDRANT LOCATED APPROXIMATELY ±75 FT. FROM SOUTHEAST CORNER OF PROPERTY. EAST SIDE OF GRAND PARK BLVD. ELEV. 798.34



Soil Survey Legend

- 108 - Marlette sandy loam, 1 to 6 percent slopes
- 118 - Capoc sandy loam, 0 to 4 percent slopes
- 12 - Brookston and Cold loams
- 168 - Fair sandy loam, 1 to 6 percent slopes
- 189 - Sebawa loam
- 408 - Udarthritis loamy sand/clay
- 418 - Aquatics sandy and loamy sand/clay
- 544 - Wetherston sandy loam, 0 to 3 percent slopes



NOT TO BE USED AS CONSTRUCTION DRAWINGS.

8-08-18 Reuse Detention Basin. Submit For Approval Extension
28-10 Added notes per Planning Commission

J ASSOCIATES, INC.
Civil Engineering and Surveying

44444 Mound Road, Suite 100
Sterling Heights, Michigan 48314
Telephone (586) 726-6310
Fax (586) 726-0042

FORMERLY MCS ASSOCIATES, INC.

PINE WOODS CONDOMINIUMS
PART OF NORTHWEST 1/4 OF SECTION 34, T.3N., R.11E., ROCHESTER HILLS, OAKLAND COUNTY, MICHIGAN

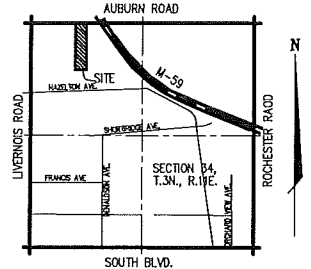
DATE 05-17-07 SCALE 1"=60'
DRAWN BY CLS SHEET 1 OF 7
CHECKED BY JCW DRAWING PS-07-825

FINAL SITE PLAN

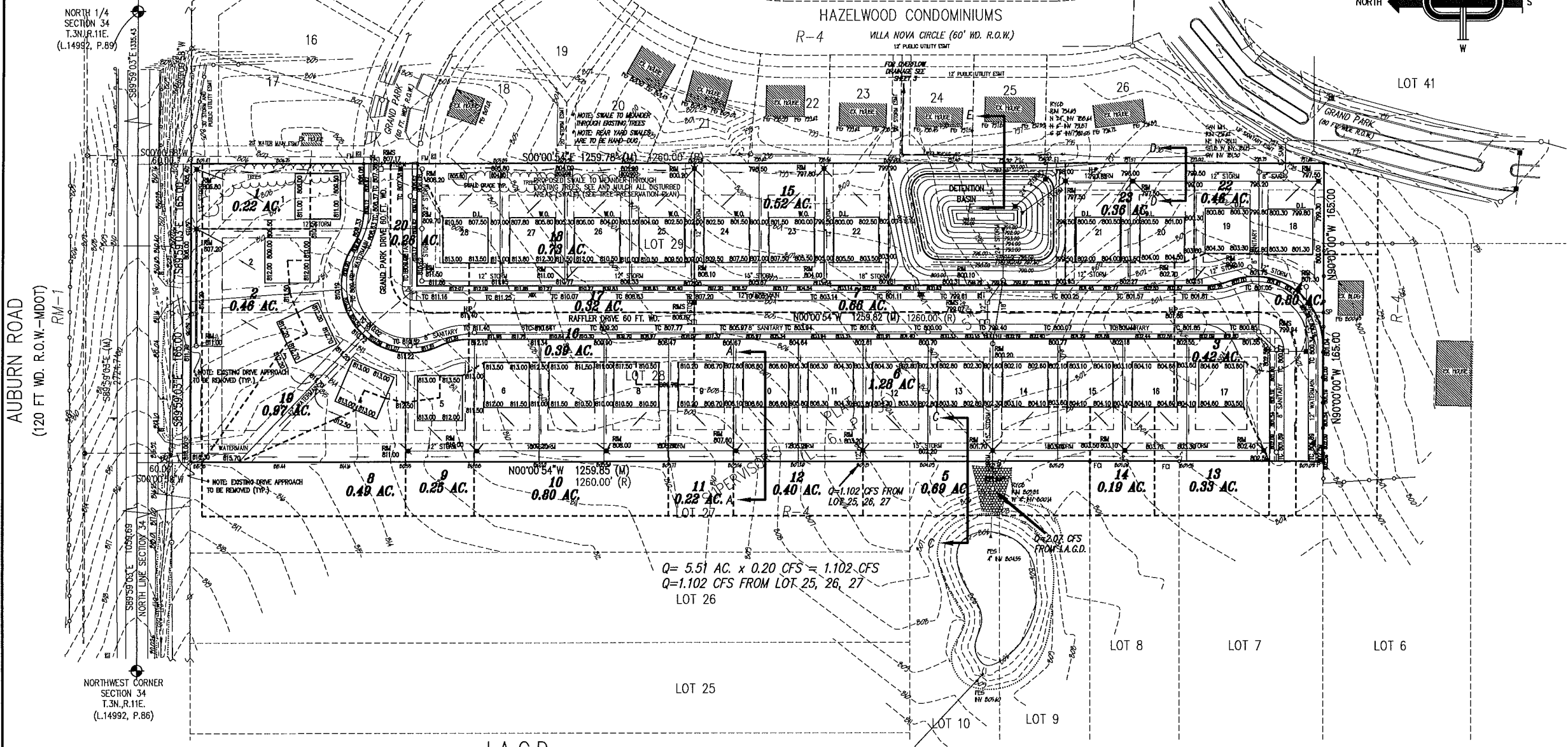
CITY FILE #05-005

"PINE WOODS CONDOMINIUMS"

PART OF THE N.W. 1/4 OF SECTION 34,
T. 3N., R. 11E., ROCHESTER HILLS, OAKLAND COUNTY, MICHIGAN.



LOCATION MAP
SCALE 1" = 2000'



DETENTION CALCULATIONS
REQUIRED STORAGE PER O.C.D.C. STANDARDS: (25 YEAR STORM)

DEVELOPED AREA: 9.544 Ac. C = 0.40
EQUIVALENT AREA: (9.544 Ac.)X(0.40) = 3.817 Ac.

$Q_0 = (9.544 \text{ Ac.}) \times (0.20 \text{ CFS/Ac.}) = 1.908 \text{ CFS}$
 $Q_0 = (1.908 \text{ CFS}) / (3.817 \text{ Ac.}) = 0.50$
 $T = 25 + [8.0825 / (0.50)^2] \times 0.5 = 101.98 \text{ MIN}$
 $V_s = 12.900(101.98 \text{ MIN}) - 40(0.50)(101.98 \text{ MIN}) = 8,320.63 \text{ CF}$
 $V_t = (8,320.63 \text{ CF}) / (3.817 \text{ Ac.}) = 31,760 \text{ CF}$

ACTUAL POND SIZE
VOLUME = $H/2(A_1 + A_2) + (A_1 A_2 H) / 6$
A1 = AREA AT TOP SURFACE
A2 = AREA AT BOTTOM SURFACE
H = HEIGHT

ELEVATION	AREA	VOLUME
791.00	1,839	2468
792.00	1,155	3901
793.00	4,657	5650
794.00	6,660	7760
795.00	8,914	10,169
796.00	11,460	12,841
796.50	12,841	

Storage Elev 791.00 to 796.50 = 36,018 cf.

STORAGE PROVIDED = 36,018 cf.
STORAGE REQUIRED = 31,760 CF

RESTRICTED OUTLET CALCULATIONS:
 $Q_0 = \text{ASSUME } 1.908 \text{ CFS}$
ASSUME A 5" GRIFICE
A = 0.136 SF
C = 0.62
H = 4.50 FT
 $Q = (0.136 \text{ SF}) \times (0.62) \times [2(32.2) \times (4.50 \text{ FT})]^{0.5}$
 $= 1.44 \text{ CFS}$

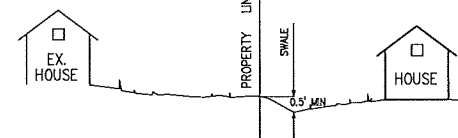
NOTE:
SEE JI ASSOCIATES, INC.
DRAWING NO. P-06-719 FOR
ENGINEERING PLANS.

NOTE:
NOT TO BE USED AS CONSTRUCTION DRAWINGS.

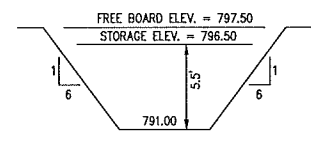
- NOTE:
- RESTRICTED FLOW FROM THE DETENTION BASIN AND OVERFLOW DRAINAGE FROM ONSITE DRAINAGE AREAS HAS BEEN SIZED AND WILL BE CONTAINED IN THE EXISTING STORM SEWER SYSTEM IN HAZEL WOODS CONDOMINIUM.
 - THE DEVELOPER IS AWARE OF THE SOIL BORINGS. THIS INFORMATION WILL BE FORWARDED TO THE CITY AT THE TIME OF CONSTRUCTION PLAN SUBMITTAL.
 - SINCE STORAGE DEPTH EXCEEDS 4 FT., WRITTEN APPROVAL WILL BE REQUIRED FROM CITY ENGINEER.
 - PROPOSED PRIVATE UTILITIES ON THE SITE, INCLUDING GAS, ELECTRIC, TELEPHONE, CABLE, ETC. WILL BE PROVIDED WHEN CONSTRUCTION PLANS ARE SUBMITTED.
 - DETENTION BASIN SHALL INCORPORATE SEDIMENT AND NUTRIENT RUNOFF TRAPPING USING BEST AVAILABLE TECHNOLOGY METHODS.
 - ADDITIONAL TEMPORARY PAVEMENT MAY NEED TO BE REMOVED WHEN THE FUTURE ROAD IS CONNECTED SO THAT THE TYPICAL JOINTING PATTERN FOR CONCRETE ROADS ARE PROVIDED.

ALL PROPOSED GRADES WILL MATCH EX. ELEV. AT PROPERTY LINE WHERE GRADING ESMTS. ARE NOT OBTAINED.

PROTECTIVE SWALE TO BE BUILT TO CARRY DRAINAGE LATERALLY IN THE DIRECTION OF DRAINAGE, TO THE CATCH BASINS.



DETAIL REAR YARD SWALE SECTION A-A



DETENTION BASIN NOT TO SCALE

LEGEND

SANITARY SEWER	—
STORM SEWER	—
WATER MAIN	—
MANHOLE w/ R.Y.C.B. COVER	○
STANDARD MANHOLE	○
3' DIA. R.Y.C.B.	○
2' DIA. R.Y.C.B.	○
MANHOLE w/ PAVT. C.B. COVER - 2' SUMP	□
STD. PAVT. CATCH BASIN - 2' SUMP	□
STD. PAVT. INLET - 2' SUMP	□
GATE VALVE IN WELL	⊗
EXISTING HYDRANT	⊗
PROPOSED HYDRANT	⊗

J ASSOCIATES, INC.
Civil Engineering and Surveying

44444 Mound Road, Suite 100
Sterling Heights, Michigan 48314
Telephone (586) 726-6310
Fax (586) 726-0042

FORMERLY MCS ASSOCIATES, INC.

PINE WOODS CONDOMINIUMS
PART OF NORTHWEST 1/4 OF SECTION 34, T. 3N., R. 11E., ROCHESTER HILLS, OAKLAND COUNTY, MICHIGAN

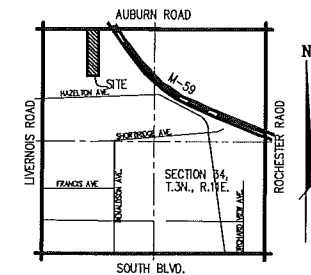
DATE 05-17-07 SCALE 1"=60'
DRAWN BY CLS SHEET 2 OF 7
CHECKED BY JCW DRAWING PS-07-825

UTILITY/GRADING PLAN

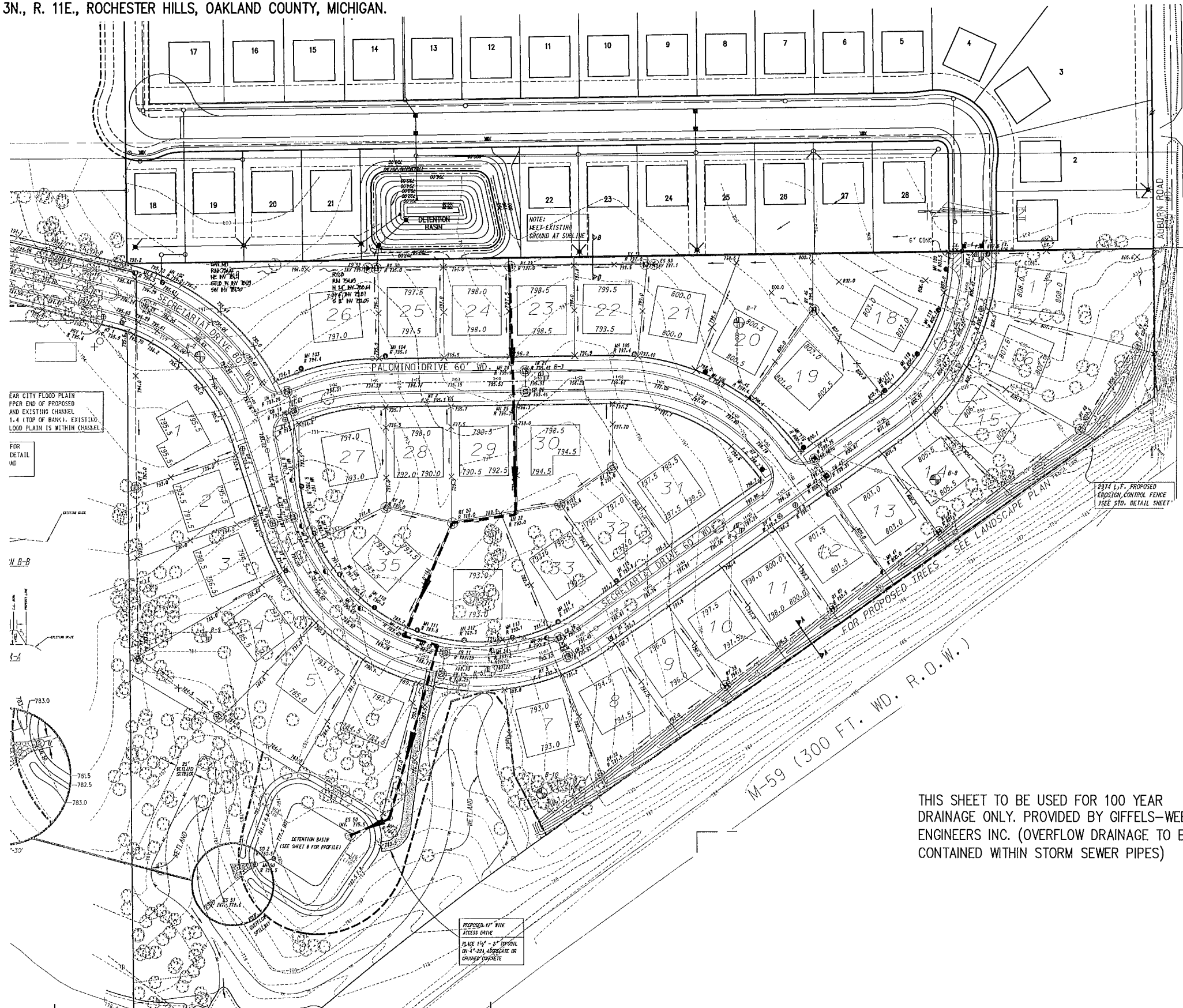
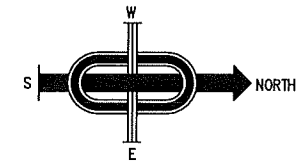
CITY FILE #05-005

"PINE WOODS CONDOMINIUMS"

PART OF THE N.W. 1/4 OF SECTION 34,
T. 3N., R. 11E., ROCHESTER HILLS, OAKLAND COUNTY, MICHIGAN.



LOCATION MAP
SCALE 1" = 2000'



EAR CITY FLOOD PLAIN
PPER END OF PROPOSED
AND EXISTING CHANNEL
1.4 (TOP OF BANK). EXISTING
LOOD PLAIN IS WITHIN CHANNEL
FOR
DETAIL
WD

2374 E.T., PROPOSED
EROSION CONTROL FENCE
SEE STD. DETAIL SHEET

PROPOSED 14" WIDE
ACCESS DRIVE
PLACE 1 1/2" - 2" TOPSOIL
ON 4" - 6" AGGREGATE OR
CRUSHER CONCRETE

THIS SHEET TO BE USED FOR 100 YEAR
DRAINAGE ONLY. PROVIDED BY GIFFELS-WEBSTER
ENGINEERS INC. (OVERFLOW DRAINAGE TO BE
CONTAINED WITHIN STORM SEWER PIPES)

NOTE:
NOT TO BE USED AS CONSTRUCTION DRAWINGS.

JF ASSOCIATES, INC.
Civil Engineering and Surveying

44444 Mound Road, Suite 100
Sterling Heights, Michigan 48314
Telephone (566) 726-6310
Fax (566) 726-0042

FORMERLY MCS ASSOCIATES, INC.

PINE WOODS
CONDOMINIUMS
PART OF NORTHWEST 1/4 OF
SECTION 34, T. 3N., R. 11E.,
ROCHESTER HILLS,
OAKLAND COUNTY, MICHIGAN

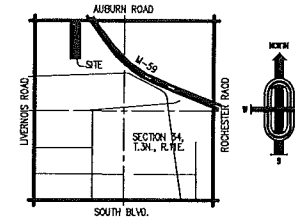
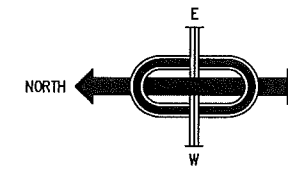
DATE 05-17-07	SCALE 1"=60'
DRAWN BY CLS	SHEET 3 OF 7
CHECKED BY JCW	DRAWING PS-07-825

CITY FILE #05-005

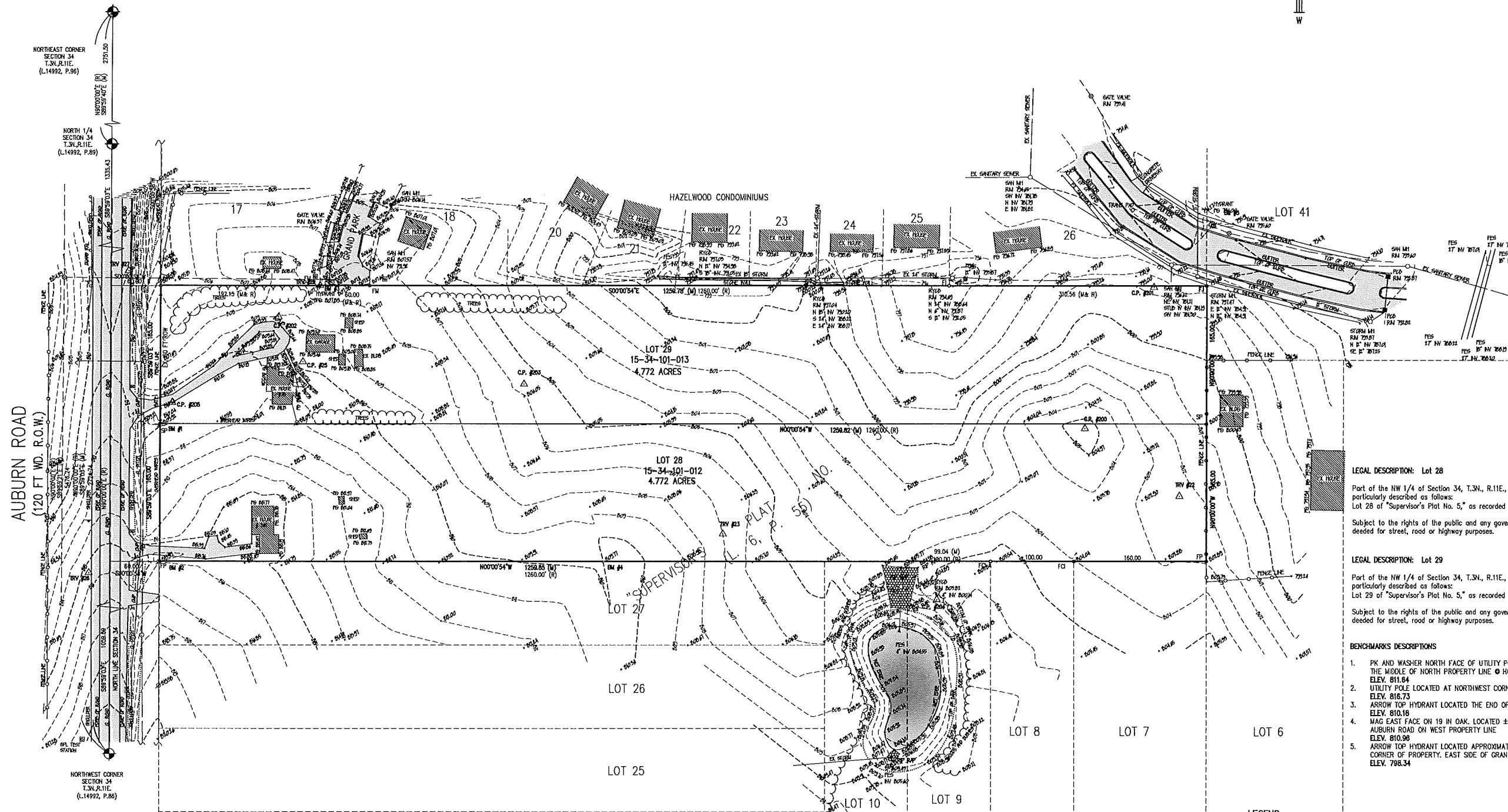
OVERFLOW DRAINAGE MAP

"PINE WOODS CONDOMINIUMS"

PART OF THE Northwest 1/4 OF SECTION 34,
T.3N.,R.11E., ROCHESTER HILLS TOWNSHIP, OAKLAND COUNTY, MICHIGAN.



LOCATION MAP
NOT TO SCALE



LEGAL DESCRIPTION: Lot 28
Part of the NW 1/4 of Section 34, T.3N., R.11E., Rochester Hills, Oakland County, Michigan, being more particularly described as follows:
Lot 28 of "Supervisor's Plat No. 5," as recorded in Liber 6, of Plats, Page 55, Oakland County Records.
Subject to the rights of the public and any governmental unit in any part of land taken thereof, used or deeded for street, road or highway purposes.

LEGAL DESCRIPTION: Lot 29
Part of the NW 1/4 of Section 34, T.3N., R.11E., Rochester Hills, Oakland County, Michigan, being more particularly described as follows:
Lot 29 of "Supervisor's Plat No. 5," as recorded in Liber 6, of Plats, Page 55, Oakland County Records.
Subject to the rights of the public and any governmental unit in any part of land taken thereof, used or deeded for street, road or highway purposes.

- BENCHMARKS DESCRIPTIONS**
- PK AND WASHER NORTH FACE OF UTILITY POLE. LOCATED APPROXIMATELY AT THE MIDDLE OF NORTH PROPERTY LINE @ HOUSE #713
ELEV. 811.64
 - UTILITY POLE LOCATED AT NORTHWEST CORNER OF PROPERTY @ HOUSE #745.
ELEV. 816.73
 - ARROW TOP HYDRANT LOCATED THE END OF GRAND PARK DRIVE
ELEV. 810.18
 - MAG EAST FACE ON 19 IN OAK. LOCATED ±800 FT. FROM CENTERLINE OF AUBURN ROAD ON WEST PROPERTY LINE
ELEV. 810.96
 - ARROW TOP HYDRANT LOCATED APPROXIMATELY ±75 FT. FROM SOUTHEAST CORNER OF PROPERTY. EAST SIDE OF GRAND PARK BLVD.
ELEV. 798.34

CONTROL POINTS:

NUMBER	NORTHING	EASTING	ELEVATION
25.	4768.0117	6298.5248	809.54
200.	3827.1123	6219.0424	805.56
201.	3743.6329	6388.2694	798.86
202.	4797.4552	6352.1885	809.05
203.	4501.7434	6271.9927	805.61
204.	4004.7174	6014.0553	806.52
205. TEMP.	4925.2299	6249.7057	810.40

TRAVERSE POINTS:

NUMBER	NORTHING	EASTING	ELEVATION
20.	4747.5125	6389.8636	807.11
22.	3712.6099	6138.1358	802.44
23.	4262.3423	6092.6988	807.00
26.	5025.3488	6045.5931	815.54
27.	4978.7367	6407.1326	811.02

BENCHMARKS:

NUMBER	NORTHING	EASTING	ELEVATION
1.	4941.1416	6224.2166	811.64
2.	4941.3213	6059.9835	816.73
3.	4737.3642	6392.8828	810.18
4.	4402.4274	6060.2647	810.96
5.	3674.9554	6463.0827	798.34

- LEGEND**
- CONTROL POINT
 - FIRE HYDRANT
 - GATE VALVE
 - MANHOLE - STM OR SAN AS INDICATED
 - PAVEMENT CATCH BASIN
 - TELEPHONE BOX
 - GAS MARKER
 - UTILITY POLE
 - GUY POLE
 - LIGHT POLE
 - SIGN
 - MAIL BOX
 - TOP OF BANK



J ASSOCIATES, INC.
Civil Engineering and Surveying

44444 Mound Road, Suite 100
Sterling Heights, Michigan 48314
Telephone (588) 726-6310
Fax (588) 726-0042

FORMERLY MGS ASSOCIATES, INC.

PINE WOODS CONDOMINIUMS
PART OF NORTHWEST 1/4 OF SECTION 34, T.3N., R.11E., ROCHESTER HILLS, OAKLAND COUNTY, MICHIGAN

DATE 01-13-05 SCALE 1"= 60'

DRAWN BY AP SHEET 4 OF 7

CHECKED BY JCW DRAWING PS-04-780

TOPOGRAPHIC SURVEY

"PINE WOODS CONDOMINIUMS"

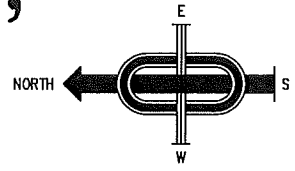
PART OF THE Northwest 1/4 OF SECTION 34,
T.3N.,R.11E., ROCHESTER HILLS TOWNSHIP, OAKLAND COUNTY, MICHIGAN.

TREE LISTING

TAG	NORTHING	EASTING	ELEVATION	SPECIES	CALIPER (IN)	TAG	NORTHING	EASTING	ELEVATION	SPECIES	CALIPER (IN)
401	4922.57	6101.98	814.55	MAPLE	15	1217	4677.02	6296.62	808.59	MAPLE	808.59
402	4921.94	6134.83	813.51	PINE	15	1218	4668.04	6266.55	809.85	MAPLE	271.26
403	4923.56	6151.07	812.57	MAPLE	14	1219	4713.42	6259.86	810.31	SPRUCE	15
404	4923.77	6178.67	811.32	PINE	14	1221	4728.86	6270.79	809.99	SPRUCE	16
405	4926.28	6202.65	811.01	MAPLE	15	1222	4730.20	6280.99	809.99	SPRUCE	12
406	4962.51	6153.43	813.68	MAPLE	18	1222	4760.73	6306.82	809.49	MAPLE	14
407	4954.43	6155.47	812.97	SPRUCE	13	1223	4771.41	6312.36	811.14	PINE	14
408	4940.44	6174.49	812.00	SPRUCE	14	1224	4771.18	6312.36	811.14	PINE	13
409	4948.87	6067.26	815.51	PINE	11	1225	4756.95	6232.22	810.87	PINE	15
410	4970.36	6065.29	814.34	PINE	16	1226	4747.41	6233.58	810.80	SPRUCE	10
411	4975.27	6115.70	813.19	PINE	11	1227	4751.64	6234.19	810.62	SPRUCE	8
412	4985.42	6176.11	813.08	SPRUCE	15	1228	4737.19	6237.54	810.51	SPRUCE	10
413	4926.27	6230.85	809.82	SPRUCE	6	1229	4732.72	6233.71	810.58	SPRUCE	8
414	4927.86	6240.97	809.83	MAPLE	15	1230	4723.89	6235.66	810.71	SPRUCE	10
415	4920.34	6271.22	809.88	SPRUCE	11	1231	4717.18	6238.11	810.50	SPRUCE	7
416	4915.03	6232.01	809.90	SPRUCE	6	1232	4715.94	6233.88	810.58	SPRUCE	7
417	4911.47	6224.53	809.95	SPRUCE	11	1233	4711.84	6227.86	810.54	SPRUCE	8
418	4905.97	6234.61	809.88	SPRUCE	9	1234	4708.73	6223.91	810.42	SPRUCE	10
419	4901.97	6235.50	810.04	SPRUCE	11	1235	4708.68	6227.99	810.44	SPRUCE	7
420	4892.40	6235.13	810.14	SPRUCE	8	1236	4705.02	6228.00	810.46	SPRUCE	7
421	4885.38	6234.90	810.20	SPRUCE	12	1237	4703.57	6227.89	810.48	SPRUCE	7
422	4871.02	6231.10	810.43	SPRUCE	8	1238	4701.71	6228.27	810.42	SPRUCE	7
423	4861.99	6231.15	810.49	SPRUCE	7	1239	4701.08	6233.96	810.45	SPRUCE	6
424	4855.96	6231.71	810.71	SPRUCE	13	1240	4696.38	6232.66	810.36	SPRUCE	9
425	4843.75	6240.15	810.45	SPRUCE	16	1241	4690.58	6232.15	810.05	SPRUCE	10
426	4802.83	6231.01	811.11	SPRUCE	29	1242	4681.29	6231.89	809.66	SPRUCE	9
427	4876.19	6262.89	810.00	CHITLOW BIRCH	9	1243	4674.51	6231.20	809.44	SPRUCE	8
428	4908.32	6278.39	808.43	SPRUCE	6	1244	4668.08	6231.58	809.41	SPRUCE	7
429	4921.61	6284.59	808.00	SPRUCE	9	1245	4663.94	6231.58	809.28	SPRUCE	7
430	4927.33	6301.43	807.96	MAPLE	18	1246	4654.89	6231.28	809.16	SPRUCE	8
431	4922.43	6331.81	807.00	SPRUCE	14	1247	4646.96	6231.59	809.03	SPRUCE	9
432	4921.60	6341.27	806.51	SPRUCE	10	1248	4638.92	6231.06	808.83	SPRUCE	9
433	4911.09	6344.19	806.83	SPRUCE	7	1249	4632.23	6232.53	811.31	PINE	15
434	4921.22	6349.68	806.64	SPRUCE	12	1250	4744.07	6204.30	811.32	PINE	13
435	4921.53	6350.20	806.41	SPRUCE	14	1251	4736.41	6178.41	813.01	PINE	16
436	4922.50	6363.32	806.17	SPRUCE	13	1252	4731.55	6125.12	815.50	WALNUT	27
437	4821.96	6399.49	806.39	YELLOW POPAR	12	1253	4723.87	6162.29	812.20	PINE	13,13
438	4816.86	6401.11	805.23	SPRUCE	11	1254	4715.51	6133.39	813.54	DOG-F	13
439	4863.60	6321.31	809.09	MAPLE	15	1255	4707.86	6098.61	813.22	WALNUT	17
440	4881.65	6302.63	809.14	MAPLE	20	1256	4690.11	6128.39	810.41	PEAR	12
441	4902.79	6281.52	809.11	SPRUCE	8	1257	4691.18	6091.38	809.38	PEAR	14
442	4865.65	6374.24	806.82	PINE	7	1258	4692.23	6058.53	810.42	DAK	19
443	4862.20	6378.96	806.86	SPRUCE	8	1259	4691.71	6058.87	810.42	PEAR	13
444	4861.63	6372.89	806.86	SPRUCE	8	1260	4691.48	6058.86	808.45	PEAR	13
445	4903.97	6399.37	806.20	SPRUCE	6	1261	4690.50	6091.71	809.27	PEAR	13
446	4892.80	6394.73	806.38	SPRUCE	8	1262	4690.26	6071.68	809.08	PEAR	13
447	4886.96	6364.78	806.55	SPRUCE	7	1263	4686.31	6182.07	807.11	PINE	14,14
448	4880.19	6365.77	806.81	SPRUCE	7	1264	4684.15	6181.61	806.95	PINE	15
449	4865.86	6365.62	806.89	SPRUCE	10	1265	4682.14	6181.96	806.74	PINE	15
450	4859.66	6365.90	806.93	SPRUCE	6	1266	4680.25	6181.70	806.74	PINE	16
451	4852.68	6367.20	806.91	SPRUCE	6	1267	4678.86	6180.96	806.48	PEAR	13
452	4845.70	6365.86	806.92	SPRUCE	8	1268	4676.84	6180.25	806.67	PEAR	13
453	4847.63	6375.81	806.93	PINE	7	1269	4674.84	6180.90	806.90	PEAR	16
454	4839.66	6377.25	807.23	PINE	7	1270	4673.73	6211.00	806.99	PEAR	16
455	4831.14	6368.95	807.43	PINE	8	1271	4673.20	6206.68	804.85	CHITLOW BIRCH	16
456	4831.63	6381.73	807.13	PINE	8	1272	4672.89	6206.68	804.85	PEAR	19
457	4823.23	6382.54	807.14	PINE	11	1273	4672.15	6206.68	804.85	PEAR	19
458	4814.04	6381.74	807.26	PINE	7	1274	4671.71	6206.24	804.55	PEAR	36
459	4811.89	6384.87	807.43	PINE	7	1275	4671.41	6206.24	804.55	PEAR	17
460	4801.11	6370.51	807.51	SPRUCE	7	1276	4671.00	6206.24	804.55	PEAR	15
461	4788.56	6381.40	807.49	PINE	8	1277	4670.70	6206.24	804.55	PEAR	16
462	4780.24	6381.16	807.72	PINE	11	1278	4670.40	6206.24	804.55	PEAR	15
463	4786.14	6372.28	807.68	PINE	11	1279	4670.10	6206.24	804.55	PEAR	15
464	4783.89	6376.73	807.96	WILLOW	18	1280	4669.80	6206.24	804.55	PEAR	24
465	4773.32	6381.03	807.95	PINE	14	1281	4669.50	6206.24	804.55	PEAR	18
466	4761.12	6378.70	807.90	SPRUCE	8	1282	4669.20	6206.24	804.55	PEAR	17
467	4728.81	6379.20	808.37	PINE	15	1283	4668.90	6206.24	804.55	PEAR	22,27
468	4702.63	6371.85	808.45	PEAR	9	1284	4668.60	6206.24	804.55	PEAR	45
469	4681.86	6371.41	808.16	PEAR	12	1285	4668.30	6206.24	804.55	PEAR	16
470	4664.76	6371.49	808.71	COTTONWOOD	36	1286	4668.00	6206.24	804.55	PEAR	16
471	4627.76	6368.04	807.45	SPRUCE	8	1287	4667.70	6206.24	804.55	PEAR	17
472	4615.96	6371.97	807.41	SPRUCE	6	1288	4667.40	6206.24	804.55	PEAR	17
473	4610.14	6371.76	807.28	SPRUCE	6	1289	4667.10	6206.24	804.55	PEAR	17
474	4602.57	6370.33	807.07	SPRUCE	7	1290	4666.80	6206.24	804.55	PEAR	13
475	4595.53	6372.87	806.91	SPRUCE	8	1291	4666.50	6206.24	804.55	PEAR	16
476	4601.36	6368.02	806.91	SPRUCE	7	1292	4666.20	6206.24	804.55	PEAR	20
477	4599.26	6371.14	806.56	SPRUCE	8	1293	4665.90	6206.24	804.55	PEAR	17
478	4596.89	6365.92	806.35	SPRUCE	7	1294	4665.60	6206.24	804.55	PEAR	12,8
479	4592.87	6372.20	806.37	SPRUCE	8	1295	4665.30	6206.24	804.55	PEAR	13
480	4574.26	6365.34	806.13	SPRUCE	9	1296	4665.00	6206.24	804.55	PEAR	15
481	4568.77	6369.00	806.16	SPRUCE	7	1297	4664.70	6206.24	804.55	PEAR	17
482	4563.03	6363.55	806.05	SPRUCE	7	1298	4664.40	6206.24	804.55	PEAR	17
483	4551.50	6369.08	806.05	SPRUCE	6	1299	4664.10	6206.24	804.55	PEAR	16
484	4557.68	6368.55	805.89	SPRUCE	7	1300	4663.80	6206.24	804.55	PEAR	16
485	4557.68	6365.20	805.73	SPRUCE	8	1401	4250.87	6236.89	804.90	DAK	11
486	4552.19	6370.16	805.74	SPRUCE	7	1402	4236.77	6224.90	804.50	DAK	14
487	4549.79	6365.94	805.40	SPRUCE	7	1403	4230.06	6220.06	804.16	WALNUT	6
488	4543.00	6367.30	805.44	SPRUCE	7	1404	4218.13	6228.21	803.73	WALNUT	6
489	4543.55	6365.38	804.90	SPRUCE	6	1405	4224.51	6157.76	805.63	ASH	8
490	4541.26	6371.96	804.59	SPRUCE	7	1406	4215.02	6147.67	805.66	ASH	29
491	4537.41	6365.41	804.67	SPRUCE	6	1407	4208.94	6147.67	805.66	WALNUT	7
492	4534.83	6371.17	804.47	SPRUCE	7	1408	4182.32	6066.39	805.04	WALNUT	11
493	4531.83	6365.44	804.43	SPRUCE	7	1409	4158.85	6061.59	804.54	WALNUT	7
494	4794.98	6243.36	811.50	MAPLE	36	1410	4182.57	6021.48	804.48	WALNUT	31
495	4528.10	6371.62	804.39	SPRUCE	7	1411	4137.78	6099.84	803.93	WALNUT	13
496	4525.21	6384.20	804.29	SPRUCE	7	1412	4128.70	6128.50	803.11	WALNUT	15
497	4512.17	6384.04	804.00	SPRUCE	7	1413	4088.25	6111.26	802.33	WALNUT	13
498	4518.10	6364.20	804.27	SPRUCE	7	1414	4140.08	6157.19	802.98	WALNUT	16
499	4515.26	6365.69	804.10	SPRUCE	8	1415	4136.80	6176.47	802.42	WALNUT	16
500	4512.17	6364.94	804.00	SPRUCE	6	1416	4114.84	6187.83	802.03	WALNUT	8
778	4796.76	6381.59	807.60	PINE	13	141					

"PINE WOODS CONDOMINIUMS"

PART OF THE N.W. 1/4 OF SECTION 34,
T. 3N., R. 11E., ROCHESTER HILLS, OAKLAND COUNTY, MICHIGAN.



TREE LISTING

TAG	NORTHING	EASTING	ELEVATION	SPECIES	DIAMETER (IN)	NORTHING	EASTING	ELEVATION	SPECIES	DIAMETER (IN)
401	4822.57	8103.89	814.98	MAPLE	15	4872.82	8296.62	808.59	WALNUT	27.16
402	4821.94	8103.01	815.01	MAPLE	15	4871.89	8296.55	808.85	WALNUT	27.16
403	4822.58	8153.07	812.57	MAPLE	14	4873.42	8298.86	810.31	SPRUCE	15
404	4823.77	8178.07	811.32	PINE	14	4870.86	8270.79	806.99	SPRUCE	16
405	4820.86	8161.01	815.01	MAPLE	15	4869.78	8269.99	806.99	SPRUCE	12
406	4821.51	8155.43	813.68	MAPLE	10	4872.22	8306.92	808.49	B. WALNUT	14
407	4824.43	8156.47	812.87	SPRUCE	13	4873.41	8232.38	811.14	PINE	14
408	4824.44	8179.49	812.00	SPRUCE	14	4873.86	8232.38	811.02	PINE	13
409	4824.87	8165.81	815.81	MAPLE	11	4876.55	8232.22	810.87	PINE	15
410	4824.36	8164.34	814.34	PINE	18	4876.55	8232.22	810.87	SPRUCE	10
411	4825.27	8153.70	813.19	PINE	11	4876.84	8234.19	810.62	SPRUCE	8
412	4825.27	8153.70	813.19	PINE	15	4876.84	8234.19	810.62	SPRUCE	10
413	4826.27	8231.85	808.82	SPRUCE	8	4877.18	8231.85	808.82	SPRUCE	8
414	4827.86	8240.87	808.83	MAPLE	15	4877.18	8231.85	808.82	SPRUCE	10
415	4828.34	8231.22	808.28	SPRUCE	11	4877.18	8231.85	808.82	SPRUCE	7
416	4829.01	8231.22	808.28	SPRUCE	8	4877.18	8231.85	808.82	SPRUCE	7
417	4831.47	8228.53	808.85	SPRUCE	11	4877.18	8231.85	808.82	SPRUCE	8
418	4832.87	8234.81	808.85	SPRUCE	8	4877.18	8231.85	808.82	SPRUCE	10
419	4833.00	8104.04	810.04	SPRUCE	11	4877.18	8231.85	808.82	SPRUCE	7
420	4832.40	8235.13	810.14	SPRUCE	8	4877.18	8231.85	808.82	SPRUCE	7
421	4835.28	8234.90	810.20	SPRUCE	12	4877.18	8231.85	808.82	SPRUCE	7
422	4837.02	8235.10	810.43	SPRUCE	8	4877.18	8231.85	808.82	SPRUCE	7
423	4836.90	8235.15	810.49	SPRUCE	7	4877.18	8231.85	808.82	SPRUCE	7
424	4835.96	8233.71	810.77	SPRUCE	13	4877.18	8231.85	808.82	SPRUCE	9
425	4843.75	8242.15	810.46	SPRUCE	10	4877.18	8231.85	808.82	SPRUCE	10
426	4842.93	8231.01	811.91	SPRUCE	29	4877.18	8231.85	808.82	SPRUCE	7
427	4876.19	8262.89	810.00	SPRUCE	9	4877.18	8231.85	808.82	SPRUCE	6
428	4808.32	8278.30	808.43	SPRUCE	8	4877.18	8231.85	808.82	SPRUCE	8
429	4821.61	8295.89	808.84	SPRUCE	9	4877.18	8231.85	808.82	SPRUCE	8
430	4822.33	8303.43	807.98	MAPLE	18	4877.18	8231.85	808.82	SPRUCE	8
431	4822.43	8337.81	807.00	SPRUCE	14	4877.18	8231.85	808.82	SPRUCE	9
432	4821.80	8340.27	807.83	SPRUCE	10	4877.18	8231.85	808.82	SPRUCE	8
433	4821.09	8344.18	808.88	SPRUCE	7	4877.18	8231.85	808.82	SPRUCE	15
434	4821.22	8348.68	808.84	SPRUCE	12	4877.18	8231.85	808.82	SPRUCE	13
435	4821.53	8357.20	808.41	SPRUCE	14	4877.18	8231.85	808.82	SPRUCE	16
436	4822.50	8363.63	808.17	SPRUCE	13	4877.18	8231.85	808.82	SPRUCE	27
437	4821.96	8359.49	808.59	SPRUCE	12	4877.18	8231.85	808.82	SPRUCE	13,13
438	4818.08	8362.11	808.53	SPRUCE	15	4877.18	8231.85	808.82	SPRUCE	13
439	4833.00	8323.31	809.09	MAPLE	15	4877.18	8231.85	808.82	SPRUCE	17
440	4833.00	8323.31	809.09	MAPLE	20	4877.18	8231.85	808.82	SPRUCE	12
441	4822.79	8287.52	808.11	SPRUCE	8	4877.18	8231.85	808.82	SPRUCE	12
442	4835.85	8374.24	808.82	PINE	7	4877.18	8231.85	808.82	SPRUCE	19
443	4835.85	8374.24	808.82	PINE	8	4877.18	8231.85	808.82	SPRUCE	13
444	4835.85	8374.24	808.82	PINE	9	4877.18	8231.85	808.82	SPRUCE	13
445	4835.85	8374.24	808.82	PINE	10	4877.18	8231.85	808.82	SPRUCE	13
446	4835.85	8374.24	808.82	PINE	11	4877.18	8231.85	808.82	SPRUCE	13
447	4835.85	8374.24	808.82	PINE	12	4877.18	8231.85	808.82	SPRUCE	13
448	4835.85	8374.24	808.82	PINE	13	4877.18	8231.85	808.82	SPRUCE	13
449	4835.85	8374.24	808.82	PINE	14	4877.18	8231.85	808.82	SPRUCE	13
450	4835.85	8374.24	808.82	PINE	15	4877.18	8231.85	808.82	SPRUCE	13
451	4835.85	8374.24	808.82	PINE	16	4877.18	8231.85	808.82	SPRUCE	13
452	4835.85	8374.24	808.82	PINE	17	4877.18	8231.85	808.82	SPRUCE	13
453	4835.85	8374.24	808.82	PINE	18	4877.18	8231.85	808.82	SPRUCE	13
454	4835.85	8374.24	808.82	PINE	19	4877.18	8231.85	808.82	SPRUCE	13
455	4835.85	8374.24	808.82	PINE	20	4877.18	8231.85	808.82	SPRUCE	13
456	4835.85	8374.24	808.82	PINE	21	4877.18	8231.85	808.82	SPRUCE	13
457	4835.85	8374.24	808.82	PINE	22	4877.18	8231.85	808.82	SPRUCE	13
458	4835.85	8374.24	808.82	PINE	23	4877.18	8231.85	808.82	SPRUCE	13
459	4835.85	8374.24	808.82	PINE	24	4877.18	8231.85	808.82	SPRUCE	13
460	4835.85	8374.24	808.82	PINE	25	4877.18	8231.85	808.82	SPRUCE	13
461	4835.85	8374.24	808.82	PINE	26	4877.18	8231.85	808.82	SPRUCE	13
462	4835.85	8374.24	808.82	PINE	27	4877.18	8231.85	808.82	SPRUCE	13
463	4835.85	8374.24	808.82	PINE	28	4877.18	8231.85	808.82	SPRUCE	13
464	4835.85	8374.24	808.82	PINE	29	4877.18	8231.85	808.82	SPRUCE	13
465	4835.85	8374.24	808.82	PINE	30	4877.18	8231.85	808.82	SPRUCE	13
466	4835.85	8374.24	808.82	PINE	31	4877.18	8231.85	808.82	SPRUCE	13
467	4835.85	8374.24	808.82	PINE	32	4877.18	8231.85	808.82	SPRUCE	13
468	4835.85	8374.24	808.82	PINE	33	4877.18	8231.85	808.82	SPRUCE	13
469	4835.85	8374.24	808.82	PINE	34	4877.18	8231.85	808.82	SPRUCE	13
470	4835.85	8374.24	808.82	PINE	35	4877.18	8231.85	808.82	SPRUCE	13
471	4835.85	8374.24	808.82	PINE	36	4877.18	8231.85	808.82	SPRUCE	13
472	4835.85	8374.24	808.82	PINE	37	4877.18	8231.85	808.82	SPRUCE	13
473	4835.85	8374.24	808.82	PINE	38	4877.18	8231.85	808.82	SPRUCE	13
474	4835.85	8374.24	808.82	PINE	39	4877.18	8231.85	808.82	SPRUCE	13
475	4835.85	8374.24	808.82	PINE	40	4877.18	8231.85	808.82	SPRUCE	13
476	4835.85	8374.24	808.82	PINE	41	4877.18	8231.85	808.82	SPRUCE	13
477	4835.85	8374.24	808.82	PINE	42	4877.18	8231.85	808.82	SPRUCE	13
478	4835.85	8374.24	808.82	PINE	43	4877.18	8231.85	808.82	SPRUCE	13
479	4835.85	8374.24	808.82	PINE	44	4877.18	8231.85	808.82	SPRUCE	13
480	4835.85	8374.24	808.82	PINE	45	4877.18	8231.85	808.82	SPRUCE	13
481	4835.85	8374.24	808.82	PINE	46	4877.18	8231.85	808.82	SPRUCE	13
482	4835.85	8374.24	808.82	PINE	47	4877.18	8231.85	808.82	SPRUCE	13
483	4835.85	8374.24	808.82	PINE	48	4877.18	8231.85	808.82	SPRUCE	13
484	4835.85	8374.24	808.82	PINE	49	4877.18	8231.85	808.82	SPRUCE	13
485	4835.85	8374.24	808.82	PINE	50	4877.18	8231.85	808.82	SPRUCE	13
486	4835.85	8374.24	808.82	PINE	51	4877.18	8231.85	808.82	SPRUCE	13
487	4835.85	8374.24	808.82	PINE	52	4877.18	8231.85	808.82	SPRUCE	13
488	4835.85	8374.24	808.82	PINE	53	4877.18	8231.85	808.82	SPRUCE	13
489	4835.85	8374.24	808.82	PINE	54	4877.18	8231.85	808.82	SPRUCE	13
490	4835.85	8374.24	808.82	PINE	55	4877.18	8231.85	808.82	SPRUCE	13
491	4835.85	8374.24	808.82	PINE	56	4877.18	8231.85	808.82	SPRUCE	13
492	4835.85	8374.24	808.82	PINE	57	4877.18	8231.85	808.82	SPRUCE	13
493	4835.85	8374.24	808.82	PINE	58	4877.18	8231.85	808.82	SPRUCE	13
494	4835.85	8374.24	808.82	PINE	59	4877.18	8231.85	808.82	SPRUCE	13
495	4835.85	8374.24	808.82	PINE	60	4877.18	8231.85	808.82	SPRUCE	13
496	4835.85	8374.24	808.82	PINE	61	4877.18	8231.85	808.82	SPRUCE	13
497	4835.85	8374.24	808.82	PINE	62	4877.18	8231.85	808.82	SPRUCE	13
498	4835.85	8374.24	808.82	PINE	63	4877.18	8231.85	808.82	SPRUCE	13
499	4835.85	8374.24	808.82	PINE	64	4877.18	8231.85	808.82	SPRUCE	13
500	4835.85	8374.24	808.82	PINE	65	4877.18	8231.85	808.82	SPRUCE	13
501	4835.85	8374.24	808.82	PINE	66	4877.18	8231.85	808.82	SPRUCE	13
502	4835.85	8374.24	808.82	PINE	67	4877.18	8231.85	808.82	SPRUCE	13
503	4835.85	8374.24	808.82	PINE	68	4877.18	8231.85	808.82	SPRUCE	13
504	4835.85	8374.24	808.82	PINE	69	4877.18	8231.85	808.82	SPRUCE	13
505	4835.85	8374.24	808.82	PINE	70	4877.18	8231.85	808.82	SPRUCE	13
506	4835.85	8374.24	808.82	PINE	71	4877.18	8231.85	808.82	SPRUCE	13
507	4835.85	8374.24	808.82	PINE	72	4877.18	8231.85	808.82	SPRUCE	13
508	4835.85	8374.24	808.82	PINE	73	4877.18	8231.85	808.82		