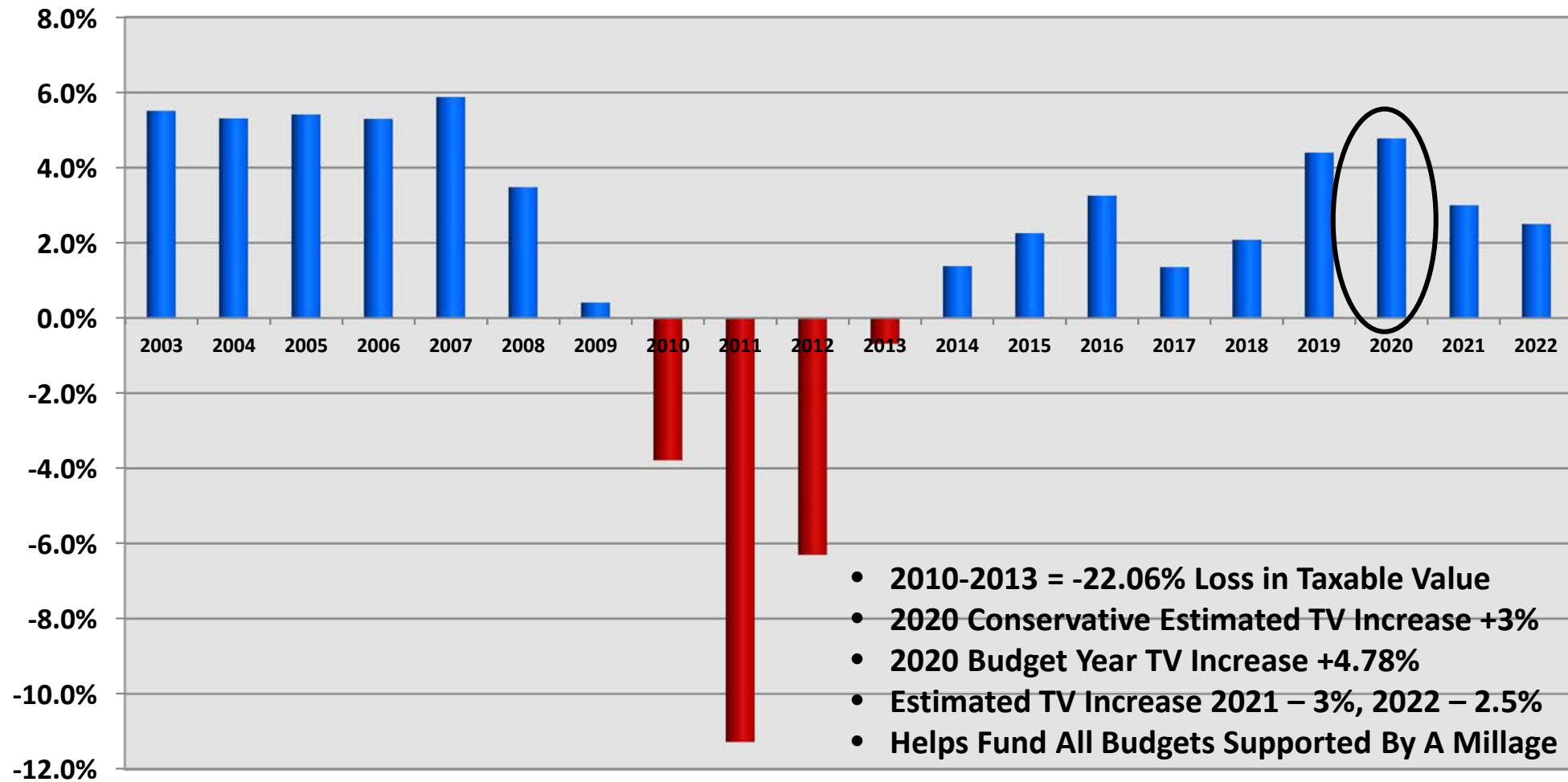


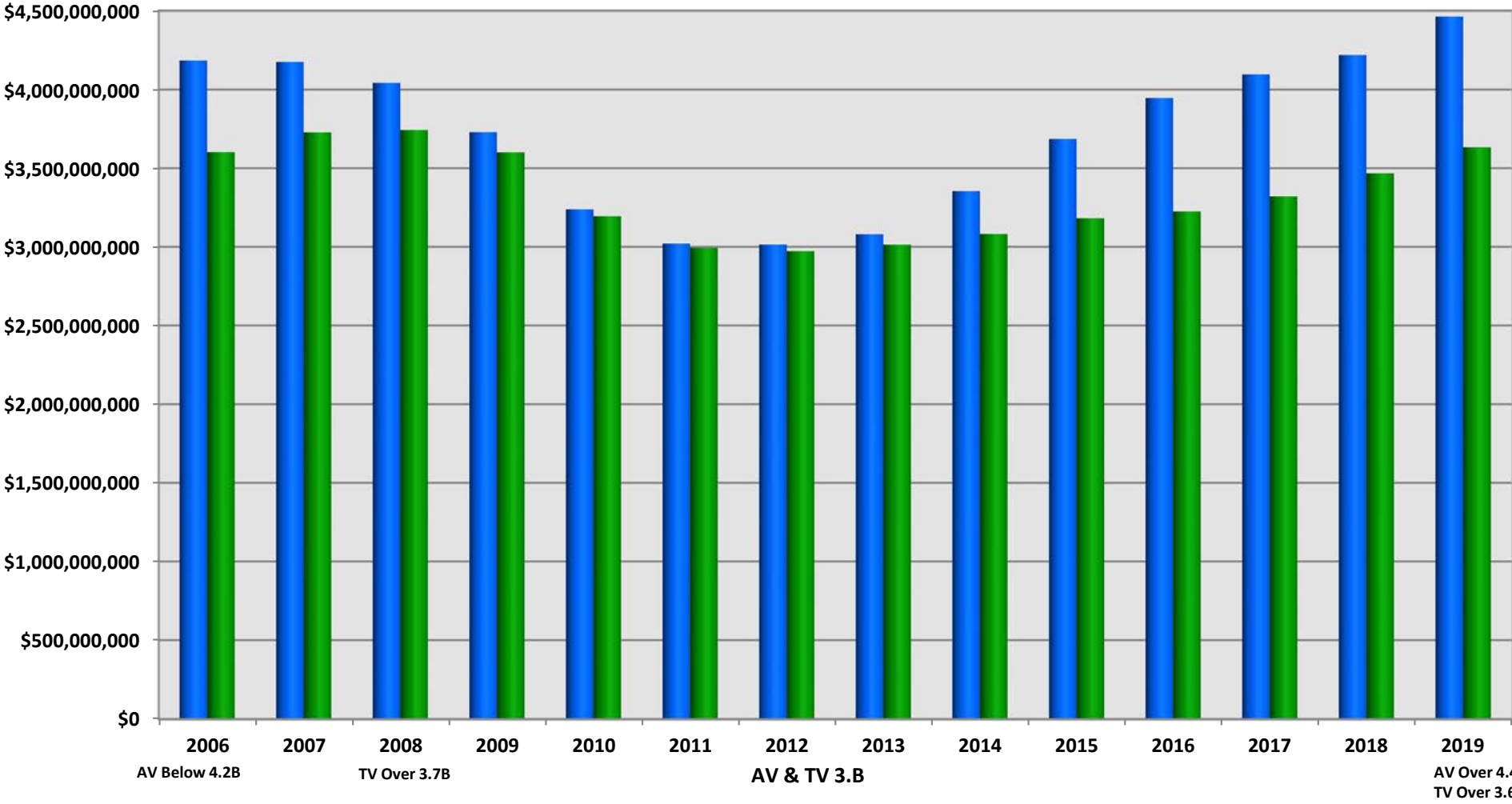
Assessing Department



Taxable Value Annual Percentage Change



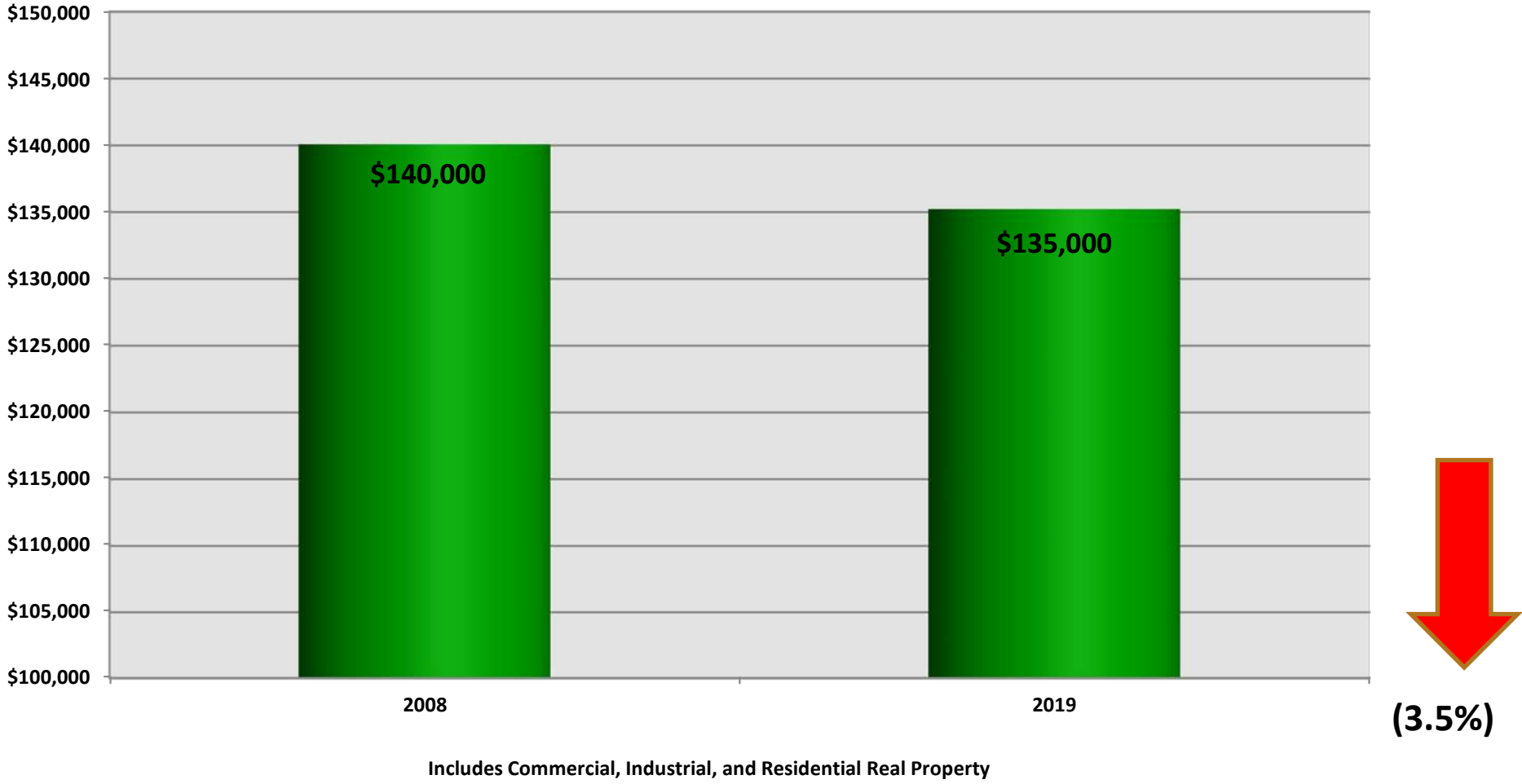
Assessed and Taxable Value History



■ Assessed Value ■ Taxable Value



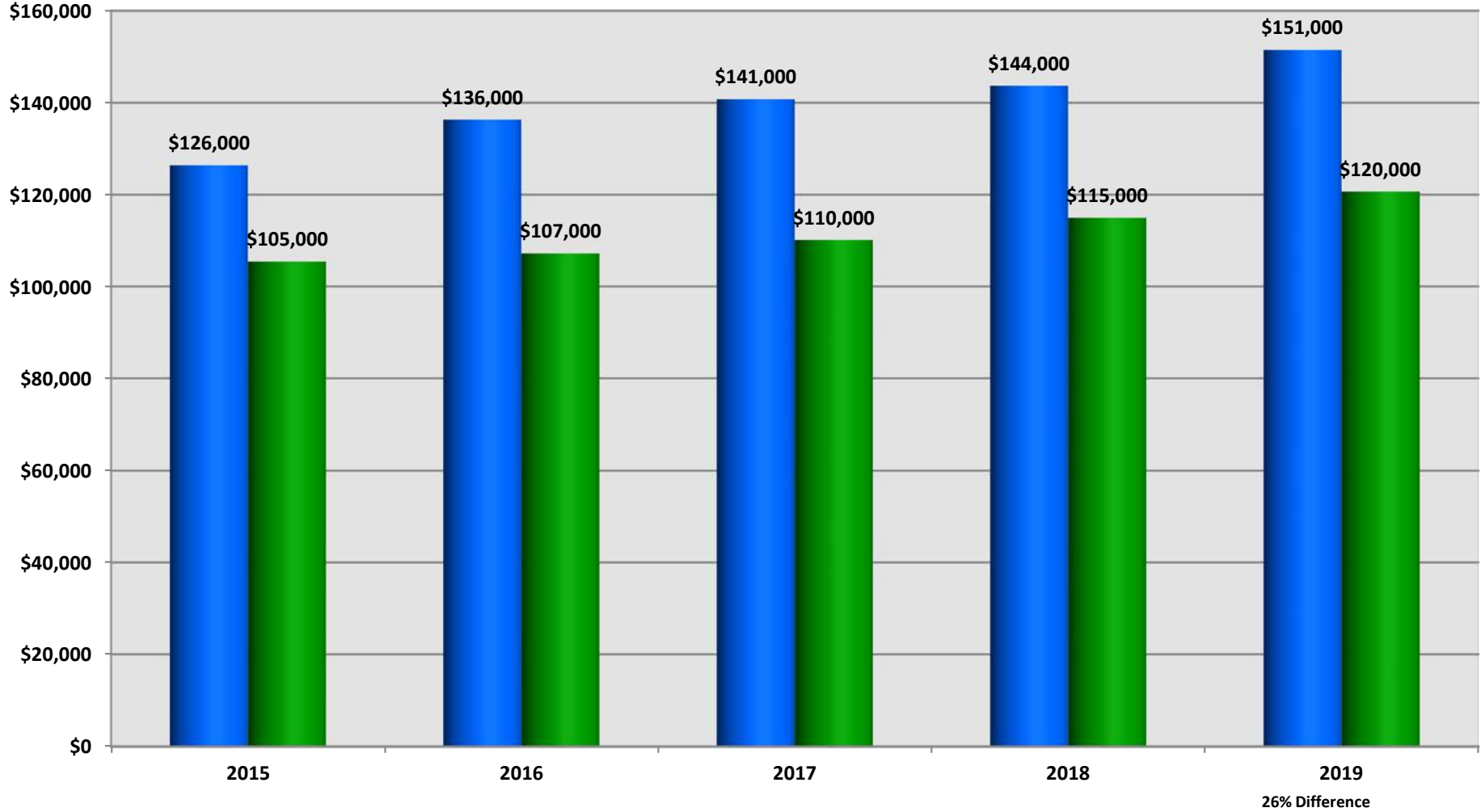
2008 / 2019: Average Real Property Taxable Value



■ Average Taxable Value Per Unit



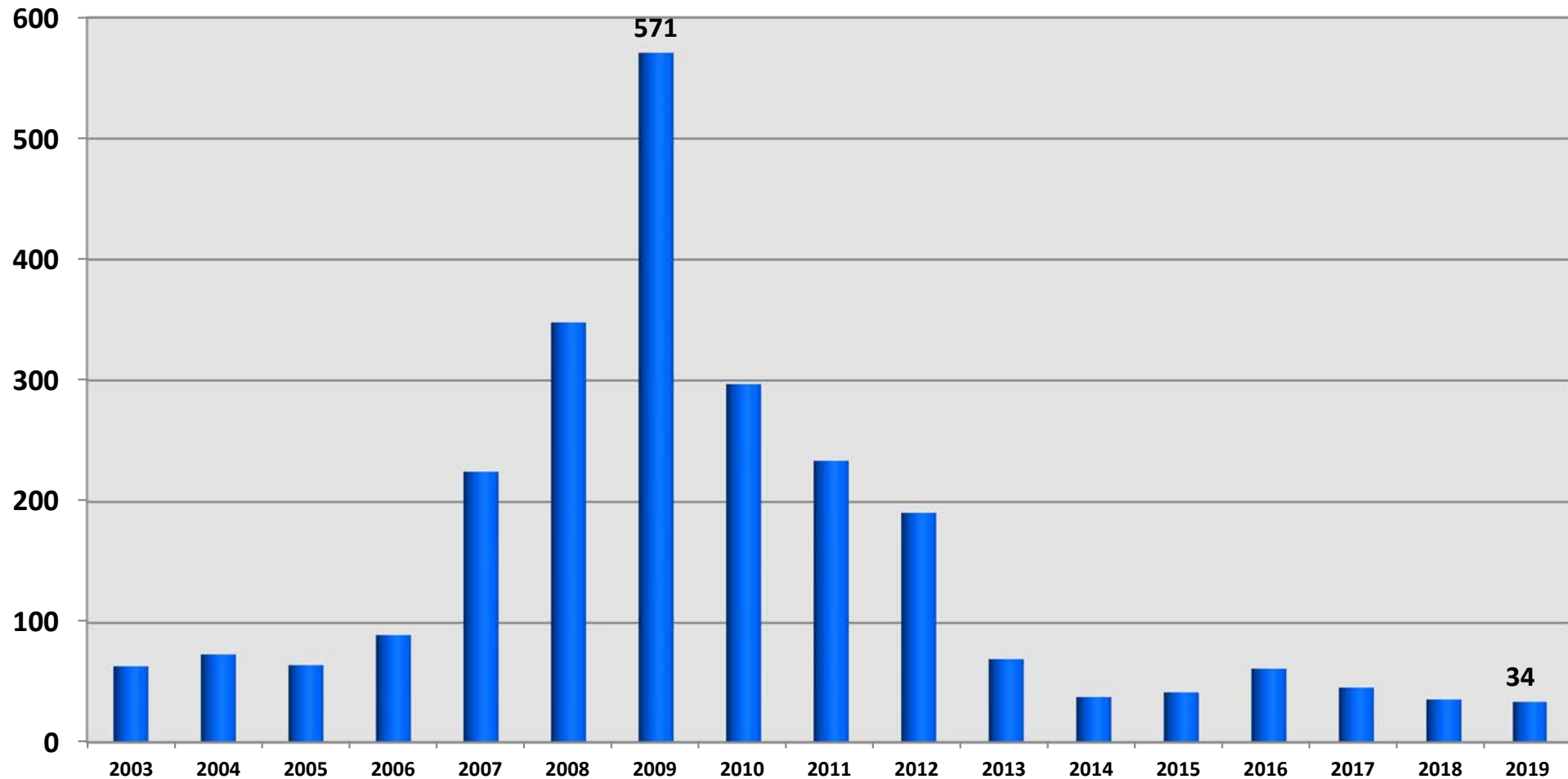
Average Residential Assessed vs Taxable Value



■ Average Assessed Value ■ Average Taxable Value



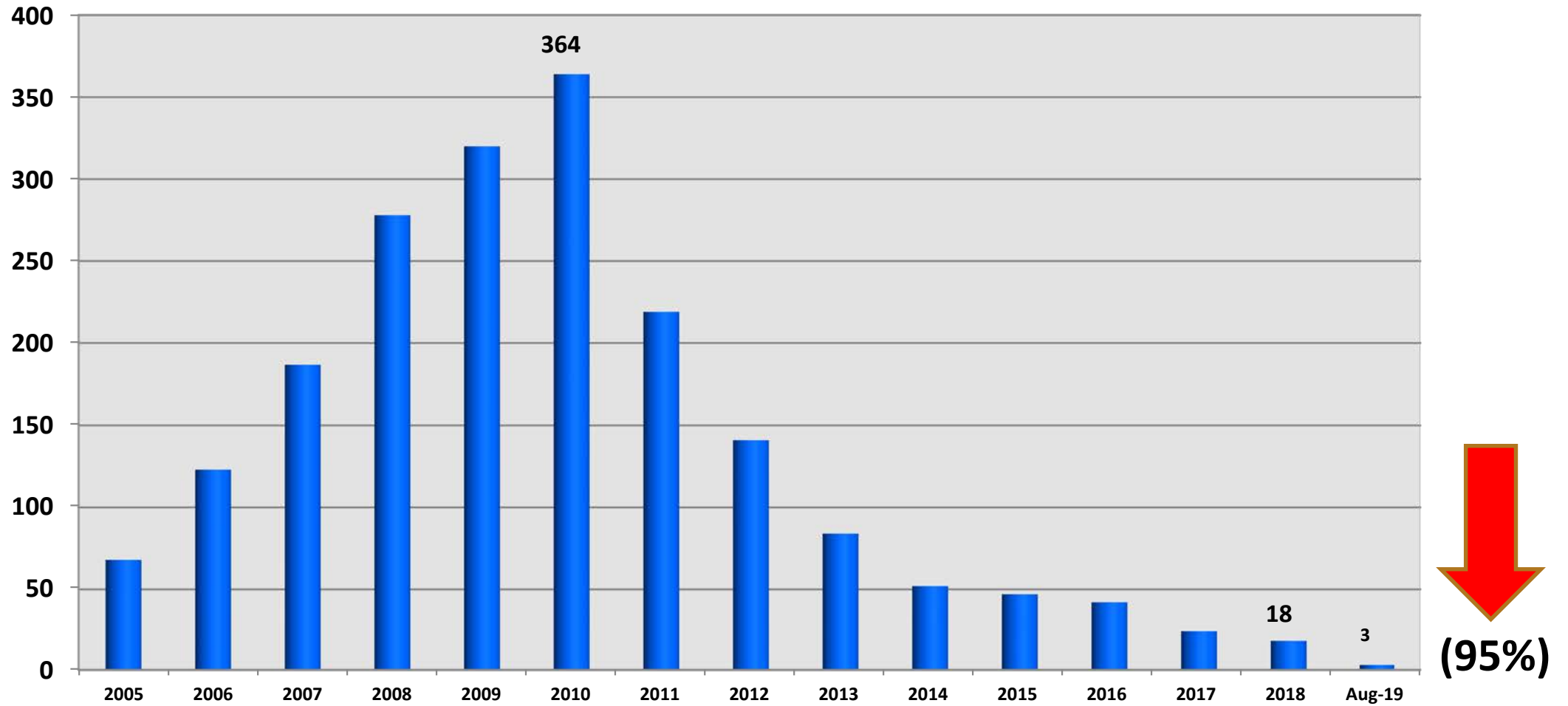
Board of Review Appeal Appointments




(94%)



Number of Foreclosures



Assessing Department Staff



6 Member Team with 151 Years Experience
All members are Certified by the State of Michigan



**THANK YOU FOR
YOUR SUPPORT**

