

CAMDEN CROSSING

PRELIMINARY SITE CONDO & WETLAND USE PERMIT



Site

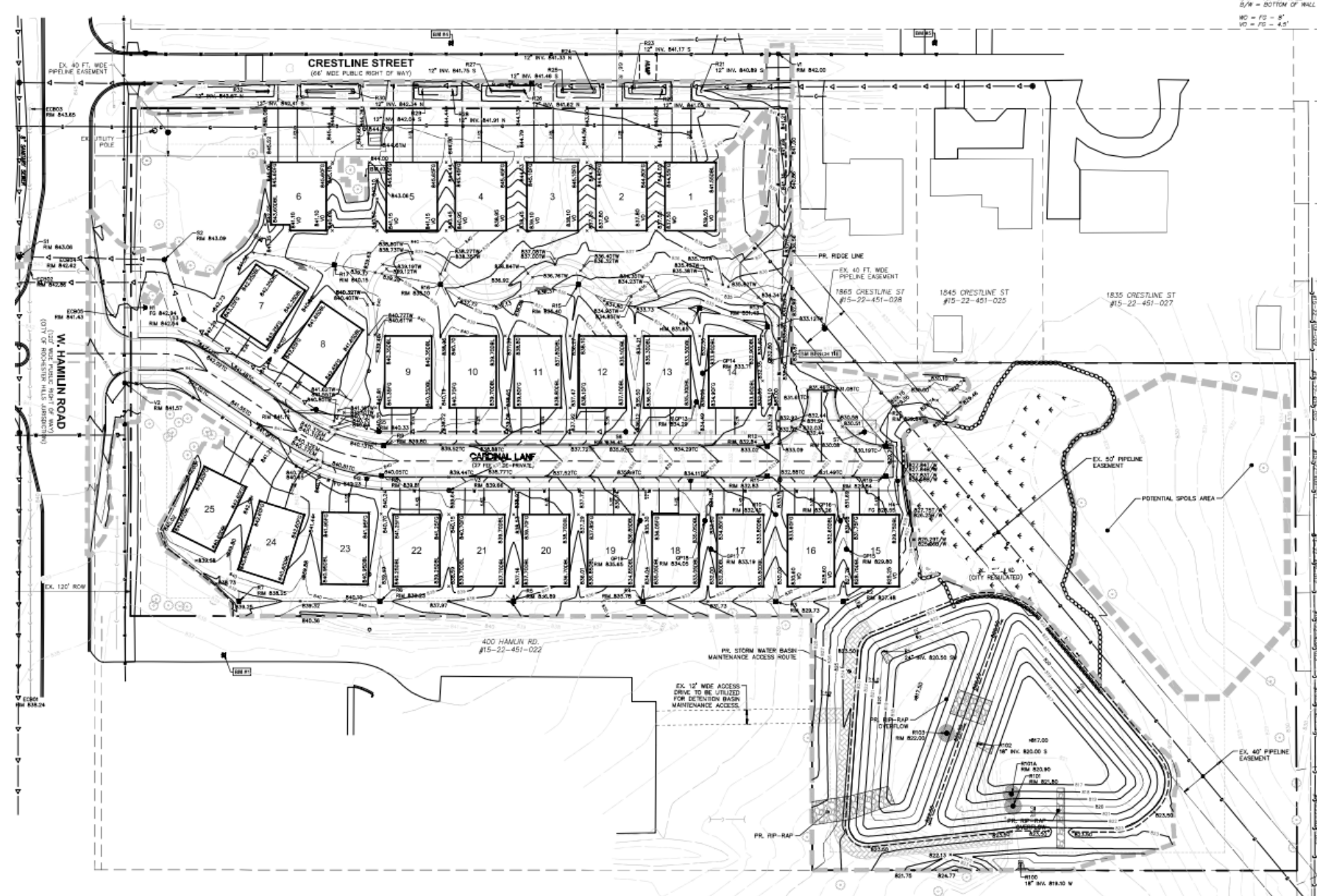
- Approx. 9.4 acres
- North side of W Hamlin Rd, between Rochester Rd & Livernois
- Zoned R-3 w/ MR Mixed Residential Overlay

Request

- Preliminary Site Condominium Plan (*PC recommended for approval*)
- Wetlands Permit (*PC recommended for approval*)
- PC approved Tree Removal Permit & Natural Features Setback Modification

CAMDEN CROSSING

PRELIMINARY SITE CONDO



- 25 homes, 6 located on Crestline & 19 on new Cardinal Lane
- Plan previously approved but expired

CAMDEN CROSSING

WETLAND USE PERMIT

- 11,427 sq. ft. of impact to wetlands, however all but 143 sq. ft. is exempt from regulation based on the impacts being for stormwater mitigation
- Wetland is a lower quality wetland due to mowing & non-native vegetive species
- 1 additional onsite wetland that is not City regulated

