

LOCATION MAP
SCALE: 1"=2000'

PROPERTY DESCRIPTION

LAND SITUATED IN THE CITY OF ROCHESTER HILLS, OAKLAND COUNTY, MICHIGAN, DESCRIBED AS:
PART OF THE SOUTHWEST 1/4 OF SECTION 15, TOWN 13 NORTH, RANGE 11 EAST, CITY OF ROCHESTER HILLS, COUNTY OF OAKLAND, MICHIGAN, DESCRIBED AS: BEGINNING AT A POINT DISTANT NORTH 1434.18 FEET MEASURED (1433.00 FEET RECORD) AND SOUTH 89 DEGREES 57 MINUTES 57 SECONDS WEST 198.70 FEET MEASURED (SOUTH 89 DEGREES 57 MINUTES 57 SECONDS WEST 200.00 FEET RECORD) FROM THE SOUTHWEST CORNER; THENCE NORTH 00 DEGREES 13 MINUTES 25 SECONDS WEST MEASURED (NORTH RECORD) 77.00 FEET; THENCE SOUTH 89 DEGREES 57 MINUTES 57 SECONDS WEST 350.54 FEET MEASURED (SOUTH 89 DEGREES 57 MINUTES 57 SECONDS WEST 348.00 FEET RECORD); THENCE SOUTH 00 DEGREES 11 MINUTES 08 SECONDS EAST 271.22 FEET MEASURED (SOUTH 00 DEGREES 11 MINUTES 08 SECONDS EAST 271.00 FEET RECORD); THENCE SOUTH 89 DEGREES 57 MINUTES 57 SECONDS WEST 58 MINUTES 14 SECONDS EAST 189.72 FEET MEASURED (SOUTH 89 DEGREES 57 MINUTES 23 SECONDS EAST 189.80 FEET RECORD); THENCE NORTH 194.55 FEET MEASURED (NORTH 89 DEGREES 57 MINUTES 57 SECONDS EAST 190.24 FEET RECORD) TO THE POINT OF BEGINNING, CONTAINING 1.468 ACRES OF LAND. SUBMITTED TO A 70 FOOT PERMANENT EASEMENT FOR INGRESS AND EGRESS AS DESCRIBED IN LITER BUREAU, PAGE 221 OF OAKLAND COUNTY RECORDS.

SITE CRITERIA

- PROPERTY SUMMARY:**
 - PARCEL ID NO.: 15-15-478-021
 - EXISTING ADDRESS: VACANT
 - EXISTING ZONING: B-2
 - ADJACENT ZONINGS: B-2 & T-1
 - AREA OF SITE: 1.468 AC.
 - EXISTING LAND USE: VACANT (TREES, BRUSH, & GRASS)
- BUILDING & USE SUMMARY:**
 - PROPOSED USE: GODDARD SCHOOL
 - GROSS AREA BUILDING: 10,336 S.F.
 - BUILDING CONSTRUCTION TYPE: "A"
 - SCHEDULED USE GROUP: "A"
 - TOTAL NUMBER OF STUDENTS: 152
 - TOTAL NUMBER OF STAFF: 20
 - SAFE DISPERSAL AREA REQUIRED: 5 S.F. PER OCCUPANT = (152 + 20) x 5 = 860 S.F.
 - SAFE DISPERSAL AREA PROVIDED: 430 S.F. (50%)
- OUTDOOR PLAY AREA:**
 - AREA REQUIRED: 100 S.F. PER STUDENT = 100 x 152 = 15,200 S.F.
 - AREA PROVIDED: 15,200 S.F.
- PARKING SUMMARY:**
 - SPACES REQUIRED: 1 SPACE PER 10 STUDENTS = 152/10 = 16 SPACES
 - 1 SPACE PER EMPLOYEE = 20 x 1 = 20 SPACES
 - 36 TOTAL SPACES REQUIRED PER CITY ORDINANCE (GODDARD SCHOOL REQUIRES A MIN. OF 40 SPACES)
 - SPACES PROVIDED: 38 STANDARD SPACES
 - 2 BARRIER-FREE SPACES
 - 40 SPACES TOTAL PROVIDED
- SETBACK SUMMARY:**

BUILDING	REQUIRED	PROVIDED
FRONT:	50'	82.53'
REAR:	50'	58.85'
SIDE (TO EAST):	25'	36'
SIDE (TO WEST):	25'	73'

PARKING	REQUIRED	PROVIDED
FRONT:	10'	10'
REAR:	10'	N/A
SIDE (TO EAST):	10'	15'
SIDE (TO WEST):	10'	5'
- LIGHTING SUMMARY:**
 - REFER TO PHOTO-METRICS PLAN BY OTHERS.
- SIGNAGE SUMMARY:**
 - NOT PART OF THIS SUBMITTAL. SIGN LOCATION SHOWN IS APPROXIMATE AND FOR PLANNING PURPOSES ONLY. SEPARATE SIGN APPLICATIONS FOR EACH SIGN # AND AS REQUIRED SHALL SUBMITTED TO THE CITY FOR REVIEW, APPROVAL AND PERMITTING AT A LATER DATE.

NOTES

- DIMENSIONS TO CURBS ARE TO FACE-OF-CURBS WITH PARKING AREAS, AND TO BACK-OF-CURBS FOR GREENBELT AREAS.
- BUILDING DIMENSIONS SHOWN ON THIS PLAN ARE TO EXTERIOR OF FOUNDATION WALLS.
- BUILDING SHALL BE EQUIPPED WITH A "TONG" KEY SYSTEM. REFER TO ARCHITECTURAL PLANS FOR LOCATION.
- BUILDING SHALL BE FULLY FIRE-SUPPRESSED.

SHEET INDEX

- SITE PLAN.
- EXISTING CONDITIONS PLAN.
- PRELIMINARY GRADING & UTILITY PLAN.
- TREE REMOVAL, PRESERVATION, & REPLACEMENT PLAN.

CONTRACTOR'S NOTE

The locations of existing underground utilities are shown as an approximate only. The contractor shall determine the exact location of all existing utilities before commencing work. No owner shall be held responsible for any and all damage which might be occasioned by the failure to locate and preserve any and all underground utilities.

3 WORKING DAYS BEFORE YOU DIG CALL MISS DIG 1-800-482-7171 (TOLL FREE) for the location of underground utilities.

The contractor shall be responsible for adhering to all applicable local, state, and federal standards, specifications, and guidelines for construction.

APPEX ENGINEERING GROUP INC.
CIVIL ENGINEERING, SURVEYING & LAND PLANNING CONSULTANTS
47745 VAN DYKE AVENUE
SHELBY TOWNSHIP, MI 48317
PHONE: 586-739-5200
FAX: 586-264-5314

Goddard School
FOR EARLY CHILDHOOD DEVELOPMENT

CLIENT: MARTY GUNZNER
400 ANTONETTE
ROCHESTER HILLS, MI 48062
(248) 310-4468

PROJECT: 08-004
4-1-08
DATE: N.P.R.
DRAWN BY: N.P.R.
CHECKED BY: N.P.R.

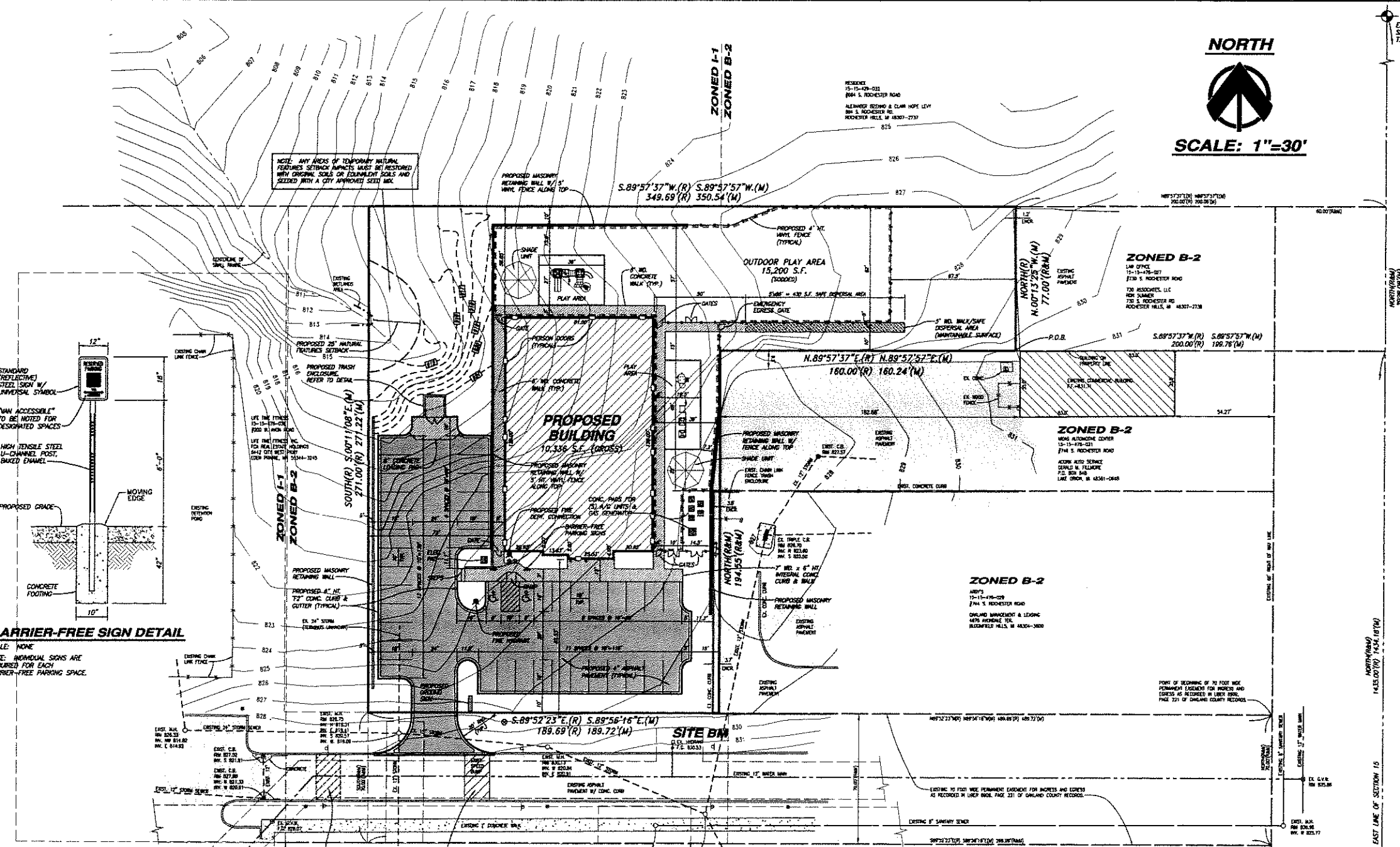
REVISIONS

REVISION 1: JUL 15 2008

SITE PLAN

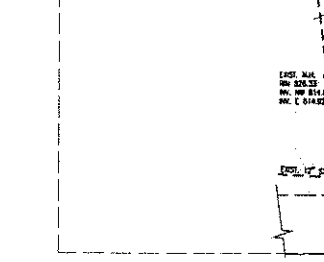
SHEET 1 OF 4

MUNICIPAL REVIEW NUMBERS: CITY FILE #01-020.2 HRC #20080453.21



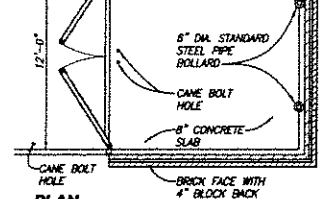
BARRIER-FREE SIGN DETAIL

SCALE: NONE
NOTE: INDIVIDUAL SIGNS ARE REQUIRED FOR EACH BARRIER-FREE PARKING SPACE.

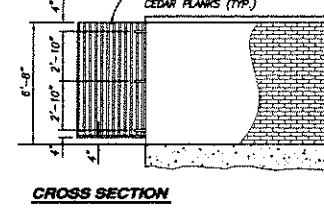


CANE BOLT HOLE DETAIL

SCALE: NONE



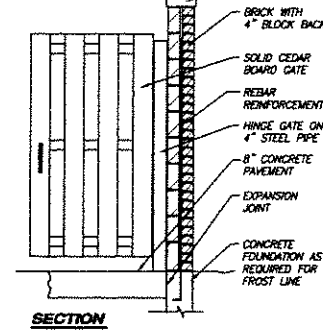
CROSS SECTION



TRASH ENCLOSURE DETAIL

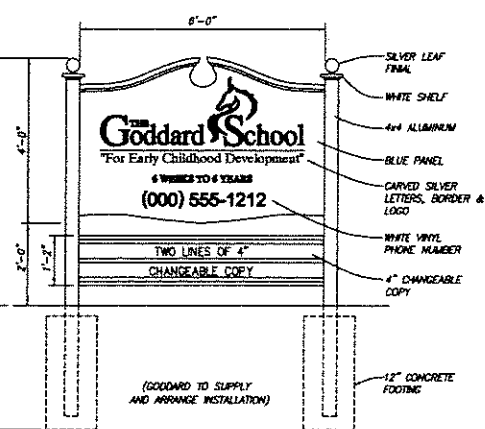
SCALE: NONE

SECTION



SIGNAGE DETAIL

SCALE: NONE
NOT PART OF THIS SUBMITTAL. A SIGN APPLICATION SHALL BE SUBMITTED TO THE CITY FOR APPROVAL AT A LATER DATE.

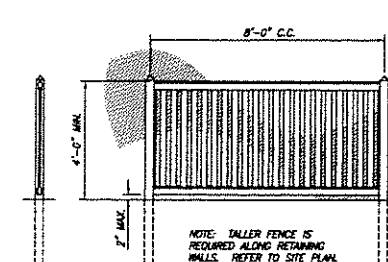


BENCHMARKS

BENCHMARK #1 = 838.95 (USGS DATUM)
TOP CORNER ON HYDRANT AT THE SOUTHWEST CORNER OF ROCHESTER ROAD AND THE ENTRANCE FOR LIFE TIME FITNESS AS SHOWN ON THE STORM SEWER AND UTILITY PLAN BY MORNIK & FRINGS, JOB #7-A271-01, DATED 8/25/00.

SITE BENCHMARK = 832.89 (USGS DATUM)
TOP OF HYDRANT NEAR THE SOUTHWEST CORNER OF SUBJECT PROPERTY ALONG THE ENTRY ROAD FOR LIFE TIME FITNESS AND AS SHOWN ON SURVEY.

NOT TO BE USED AS CONSTRUCTION DRAWINGS



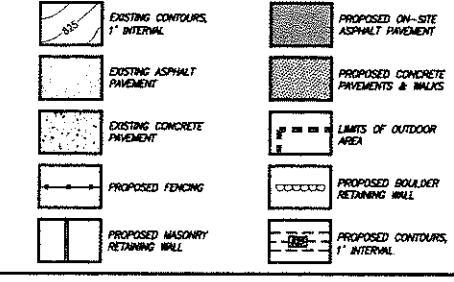
VINYL FENCE DETAIL

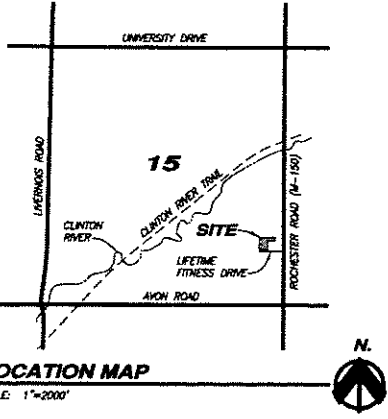
SCALE: NONE

FIRE DEPARTMENT NOTES

- FIRE LANES SHALL BE DESIGNATED BY THE FIRE CODE OFFICIAL AND SHALL BE CONSPICUOUSLY POSTED ON BOTH SIDES OF THE FIRE LANE, WITH FIRE LANE SIGNS SPACED NOT MORE THAN 100 FEET APART, TWO STOPPING STANDING, PARKING, FIRE LANE, AND IN CONFORMANCE WITH THE MICHIGAN MANUAL OF UNIFORM TRAFFIC CONTROL DEVICES. FIRE PREVENTION ORDINANCE CHAPTER 58, SEC. 506.
- CONSTRUCTION SITES SHALL BE SAFEGUARDED IN ACCORDANCE WITH I.F.C. CHAPTER 14.
- OPEN BURNING IS NOT PERMITTED, INCLUDING THE BURNING OF TRASH, DEBRIS, OR LAND CLEARING MATERIALS. OPEN BURNING FOR WARNING OF SAND AND/OR WATER FOR THE PREPARATION OF MORTAR SHALL BE WITHIN THE CITY OF ROCHESTER HILLS BURN PERMIT GUIDELINES. CONTACT ROCHESTER HILLS FIRE DEPARTMENT FOR PERMIT INFORMATION. FIRE PREVENTION ORDINANCE CHAPTER 58, SEC. 307.6.2 & 307.6.2.3.

LEGEND





PROPERTY DESCRIPTION
LAND SITUATED IN THE CITY OF ROCHESTER HILLS, OAKLAND COUNTY, MICHIGAN, DESCRIBED AS:
PART OF THE SOUTHWEST 1/4 OF SECTION 15, TOWN J NORTH, RANGE 11 EAST, CITY OF ROCHESTER HILLS, COUNTY OF OAKLAND, MICHIGAN, DESCRIBED AS:
BEGINNING AT A POINT DISTANT NORTH 1434.18 FEET MEASURED (1435.00 FEET RECORD) AND SOUTH 89 DEGREES 57 MINUTES 37 SECONDS WEST 190.76 FEET RECORD) FROM THE SOUTHWEST CORNER THENCE NORTH 90 DEGREES 13 MINUTES 25 SECONDS WEST MEASURED (NORTH RECORD) 77.00 FEET THENCE SOUTH 89 DEGREES 57 MINUTES 37 SECONDS WEST 350.54 FEET MEASURED (SOUTH RECORD) 57 DEGREES 57 MINUTES 37 SECONDS EAST 348.89 FEET RECORD) THENCE SOUTH 60 DEGREES 11 MINUTES 08 SECONDS EAST 271.24 FEET MEASURED (SOUTH 271.00 FEET RECORD) THENCE SOUTH 89 DEGREES 56 MINUTES 18 SECONDS EAST 180.72 FEET MEASURED (SOUTH 89 DEGREES 52 MINUTES 23 SECONDS EAST 180.69 FEET RECORD) THENCE NORTH 194.55 FEET MEASURED (NORTH 89 DEGREES 57 MINUTES 37 SECONDS EAST 160.24 FEET RECORD) TO THE POINT OF BEGINNING, CONTAINING 1.468 ACRES OF LAND.
SUBJECT TO A 70 FOOT PERMANENT EASEMENT FOR INGRESS AND EGRESS AS DESCRIBED IN LBR 8906, PAGE 221 OF OAKLAND COUNTY RECORDS.

SITE CRITERIA
* PROPERTY SUMMARY:
PARCEL ID NO.: 15-15-478-021
EXISTING ADDRESS: VACANT
ADJACENT ZONINGS: B-2 & I-1
AREA OF SITE: 1.468 AC.
EXISTING LAND USE: VACANT (TREES, BRUSH, & GRASS)

BENCHMARKS
BENCHMARK #1 = 832.95 (USGS DATUM)
TOP CORNER OF HYDRANT AT THE SOUTHWEST CORNER OF ROCHESTER ROAD AND THE ENTRANCE FOR LIFE TIME FITNESS AS SHOWN ON THE STORM SEWER AND UTILITY PLAN BY NORDA & FRUAS, JOB #7-4271-01, DATED 8/23/00.
SITE BENCHMARK = 832.88 (USGS DATUM)
TOP OF HYDRANT NEAR THE SOUTHWEST CORNER OF SUBJECT PROPERTY ALONG THE ENTRY ROAD FOR LIFE TIME FITNESS AND AS SHOWN ON SURVEY.

NOTES
1. WETLANDS SHOWN AS PER WETLANDS FLAGGING BY SAH ENVIRONMENTAL CONSULTING, MAY 12, 2006.

- LEGEND**
- [Symbol] EXISTING GRADE
 - [Symbol] EXISTING CONTOURS, 1' INTERVAL
 - [Symbol] EXISTING ASPHALT PAVEMENT
 - [Symbol] EXISTING CONCRETE PAVEMENT
 - [Symbol] LIMITS OF SOIL DISTRICT
 - [Symbol] EXISTING TREE & TREE TAG NUMBER

SOILS

10B WILLETTE SANDY LOAM (1 TO 6% SLOPES), 0"-8" DARK GRAYISH-BROWN SANDY LOAM, 8"-20" DARK YELLOWISH-BROWN CLAY LOAM, 20"-31" YELLOWISH-BROWN CLAY LOAM, 31"-60" YELLOWISH-BROWN AND PALE BROWN LOAM, MODERATELY SLOW PERMEABILITY, MEDIUM RUNOFF.

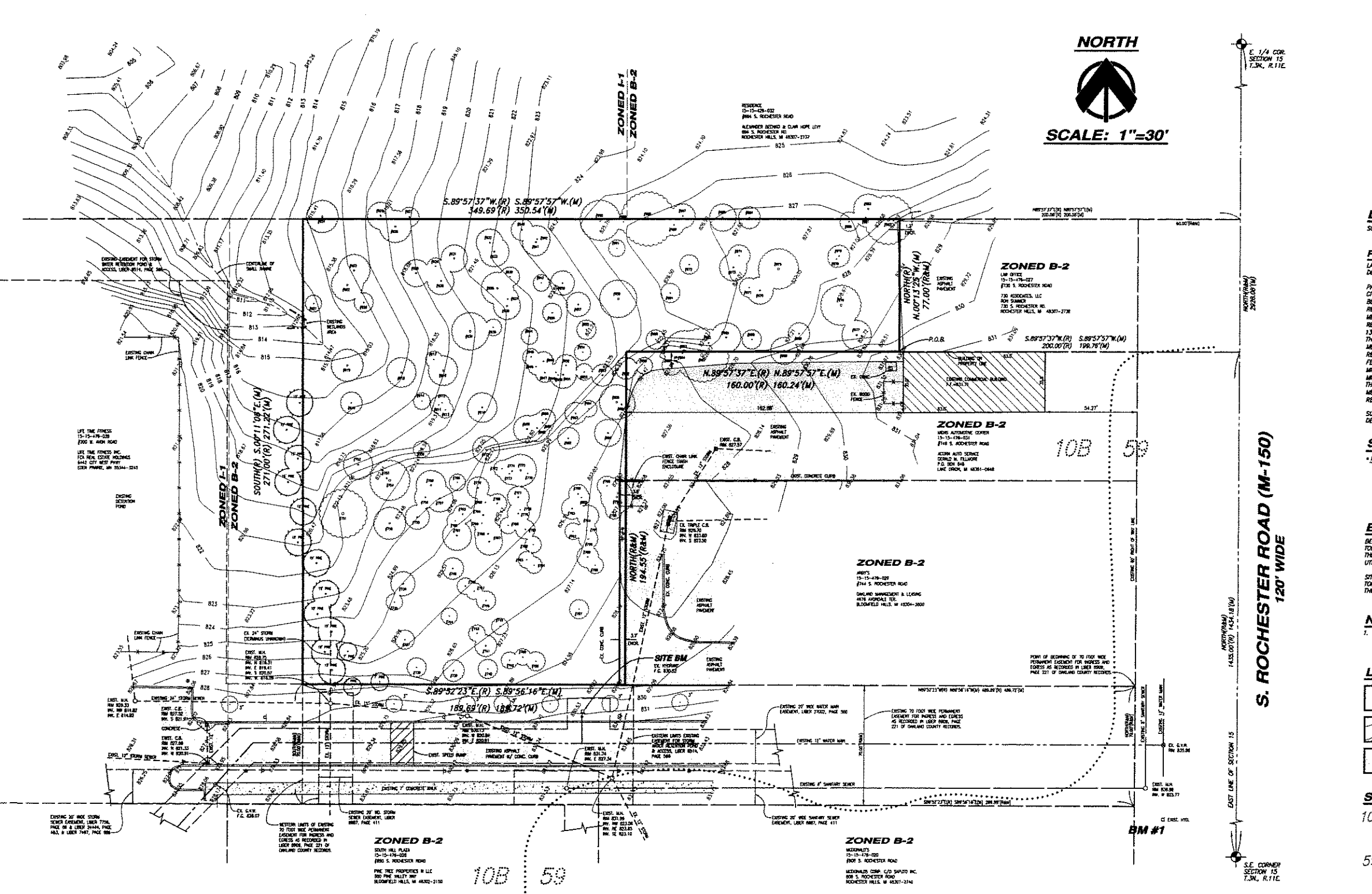
59 URBAN LAND
100% URBAN LAND SOILS. ON-SITE INVESTIGATION IS NEEDED TO DETERMINE THE SUITABILITY FOR SPECIFIC USES.

TREE SUMMARY
TOTAL NUMBER OF TREES SURVEYED (INCLUDING 9 PINES): 171
MINUS ASPH TREES: -25
MINUS DEAD TREES: -5
MINUS OFF-SITE TREES: -13
TOTAL NUMBER OF REGULATED TREES ON-SITE: 130

NOT TO BE USED AS CONSTRUCTION DRAWINGS

CONTRACTOR'S NOTE
The locations of existing underground utilities are shown as an approximate only. The contractor shall determine the exact location of all existing utilities before commencing any of or damage which might be occasioned by his failure to locate and preserve any of or underground utilities. The contractor shall be responsible for adhering to applicable local, state, and federal standards, specifications, and guidelines for construction.

J MORRIS DAVIS
BEFORE YOU DIG CALL MISS DIG
1-800-482-7171
(TOLL FREE) for the location of underground utilities



S. ROCHESTER ROAD (M-150)
120' WIDE

TREE INVENTORY

Tag No.	Size (in.)	Common Name	Botanical Name	Remove?	Comments	Tag No.	Size (in.)	Common Name	Botanical Name	Remove?	Comments	Tag No.	Size (in.)	Common Name	Botanical Name	Remove?	Comments	Tag No.	Size (in.)	Common Name	Botanical Name	Remove?	Comments
706	8	Ash	Fraxinus Sp.	Yes	Non-regulated	704	10	Poplar	Populus Sp.	Yes		702	8	Box Elder	Acer Negundo	Yes		682	12	Ash	Fraxinus Sp.	Yes	Non-regulated
708	8	Box Elder	Acer Negundo	Yes		706	8	Box Elder	Acer Negundo	Yes		704	8	Box Elder	Acer Negundo	Yes		683	12	Box Elder	Acer Negundo	Yes	
707	7	Box Elder	Acer Negundo	Yes		705	10	Poplar	Populus Sp.	Yes		703	8	Box Elder	Acer Negundo	Yes		684	8	Box Elder	Acer Negundo	Yes	
708	7	Apple	Malus Sp.	Yes		708	12	Poplar	Populus Sp.	Yes		707	8	Box Elder	Acer Negundo	Yes		685	7	Ash	Fraxinus Sp.	Yes	Non-regulated
708	8	Box Elder	Acer Negundo	Yes		709	8	Poplar	Populus Sp.	Yes		707	8	Box Elder	Acer Negundo	Yes		686	7	Ash	Fraxinus Sp.	Yes	Non-regulated
740	7	Box Elder	Acer Negundo	Yes		710	8	Poplar	Populus Sp.	Yes		708	7	Poplar	Populus Sp.	Yes		687	9	Box Elder	Acer Negundo	Yes	
741	8	Box Elder	Acer Negundo	Yes		711	10	Poplar	Populus Sp.	Yes		708	7	Poplar	Populus Sp.	Yes		688	7	Box Elder	Acer Negundo	Yes	
742	8	Box Elder	Acer Negundo	Yes		712	8	Box Elder	Acer Negundo	Yes		708	7	Poplar	Populus Sp.	Yes		689	8	Box Elder	Acer Negundo	Yes	
743	8	Box Elder	Acer Negundo	Yes		713	10	Poplar	Populus Sp.	Yes		708	7	Poplar	Populus Sp.	Yes		690	7	Box Elder	Acer Negundo	Yes	
744	8	Box Elder	Acer Negundo	Yes		714	10	Poplar	Populus Sp.	Yes		708	7	Poplar	Populus Sp.	Yes		691	8	Box Elder	Acer Negundo	Yes	
745	8	Box Elder	Acer Negundo	Yes		715	12	Poplar	Populus Sp.	Yes		708	7	Poplar	Populus Sp.	Yes		692	8	Box Elder	Acer Negundo	Yes	
746	8	Box Elder	Acer Negundo	Yes		716	10	Poplar	Populus Sp.	Yes		708	7	Poplar	Populus Sp.	Yes		693	8	Box Elder	Acer Negundo	Yes	
747	8	Box Elder	Acer Negundo	Yes		717	10	Poplar	Populus Sp.	Yes		708	7	Poplar	Populus Sp.	Yes		694	8	Box Elder	Acer Negundo	Yes	
748	8	Box Elder	Acer Negundo	Yes		718	10	Poplar	Populus Sp.	Yes		708	7	Poplar	Populus Sp.	Yes		695	8	Box Elder	Acer Negundo	Yes	
749	8	Box Elder	Acer Negundo	Yes		719	10	Poplar	Populus Sp.	Yes		708	7	Poplar	Populus Sp.	Yes		696	8	Box Elder	Acer Negundo	Yes	
750	10	Poplar	Populus Sp.	Yes		720	10	Poplar	Populus Sp.	Yes		708	7	Poplar	Populus Sp.	Yes		697	8	Box Elder	Acer Negundo	Yes	
701	18	Poplar	Populus Sp.	Yes		721	10	Poplar	Populus Sp.	Yes		708	7	Poplar	Populus Sp.	Yes		698	8	Box Elder	Acer Negundo	Yes	
702	10	Box Elder	Acer Negundo	Yes		722	10	Poplar	Populus Sp.	Yes		708	7	Poplar	Populus Sp.	Yes		699	8	Box Elder	Acer Negundo	Yes	
703	10	Poplar	Populus Sp.	Yes		723	10	Poplar	Populus Sp.	Yes		708	7	Poplar	Populus Sp.	Yes		700	7	Box Elder	Acer Negundo	Yes	
704	15	Poplar	Populus Sp.	Yes		724	10	Poplar	Populus Sp.	Yes		708	7	Poplar	Populus Sp.	Yes		701	11	Poplar	Populus Sp.	Yes	
705	9	Poplar	Populus Sp.	Yes		725	10	Poplar	Populus Sp.	Yes		708	7	Poplar	Populus Sp.	Yes		702	8	Box Elder	Acer Negundo	Yes	
706	8	Box Elder	Acer Negundo	Yes		726	10	Poplar	Populus Sp.	Yes		708	7	Poplar	Populus Sp.	Yes		703	8	Box Elder	Acer Negundo	Yes	
707	10	Poplar	Populus Sp.	Yes		727	10	Poplar	Populus Sp.	Yes		708	7	Poplar	Populus Sp.	Yes		704	8	Box Elder	Acer Negundo	Yes	
708	11	Poplar	Populus Sp.	Yes		728	10	Poplar	Populus Sp.	Yes		708	7	Poplar	Populus Sp.	Yes		705	7	Box Elder	Acer Negundo	Yes	
709	8	Box Elder	Acer Negundo	Yes		729	10	Poplar	Populus Sp.	Yes		708	7	Poplar	Populus Sp.	Yes		706	7	Box Elder	Acer Negundo	Yes	
710	10	Poplar	Populus Sp.	Yes		730	10	Poplar	Populus Sp.	Yes		708	7	Poplar	Populus Sp.	Yes		707	7	Box Elder	Acer Negundo	Yes	
711	11	Poplar	Populus Sp.	Yes		731	10	Poplar	Populus Sp.	Yes		708	7	Poplar	Populus Sp.	Yes		708	7	Box Elder	Acer Negundo	Yes	
712	8	Box Elder	Acer Negundo	Yes		732	10	Poplar	Populus Sp.	Yes		708	7	Poplar	Populus Sp.	Yes		709	7	Box Elder	Acer Negundo	Yes	
713	8	Box Elder	Acer Negundo	Yes		733	10	Poplar	Populus Sp.	Yes		708	7	Poplar	Populus Sp.	Yes		710	7	Box Elder	Acer Negundo	Yes	
714	8	Box Elder	Acer Negundo	Yes		734	10	Poplar	Populus Sp.	Yes		708	7	Poplar	Populus Sp.	Yes		711	7	Box Elder	Acer Negundo	Yes	
715	8	Box Elder	Acer Negundo	Yes		735	10	Poplar	Populus Sp.	Yes		708	7	Poplar	Populus Sp.	Yes		712	7	Box Elder	Acer Negundo	Yes	
716	8	Box Elder	Acer Negundo	Yes		736	10	Poplar	Populus Sp.	Yes		708	7	Poplar	Populus Sp.	Yes		713	7	Box Elder	Acer Negundo	Yes	
717	8	Box Elder	Acer Negundo	Yes		737	10	Poplar	Populus Sp.	Yes		708	7	Poplar	Populus Sp.	Yes		714	7	Box Elder	Acer Negundo	Yes	
718	8	Box Elder	Acer Negundo	Yes		738	10	Poplar	Populus Sp.	Yes		708	7	Poplar	Populus Sp.	Yes		715	7	Box Elder	Acer Negundo	Yes	
719	8	Box Elder	Acer Negundo	Yes		739	10	Poplar	Populus Sp.	Yes		708	7	Poplar	Populus Sp.	Yes		716	7	Box Elder	Acer Negundo	Yes	
720	8	Box Elder	Acer Negundo	Yes		740	10	Poplar	Populus Sp.	Yes		708	7	Poplar	Populus Sp.	Yes		717	7	Box Elder	Acer Negundo	Yes	

APPEX
ENGINEERING GROUP INC.
CIVIL ENGINEERING, SURVEYING & LAND PLANNING CONSULTANTS
PHONE: 586-739-5200
FAX: 586-264-5314

Goddard School
FOR EARLY CHILDHOOD DEVELOPMENT

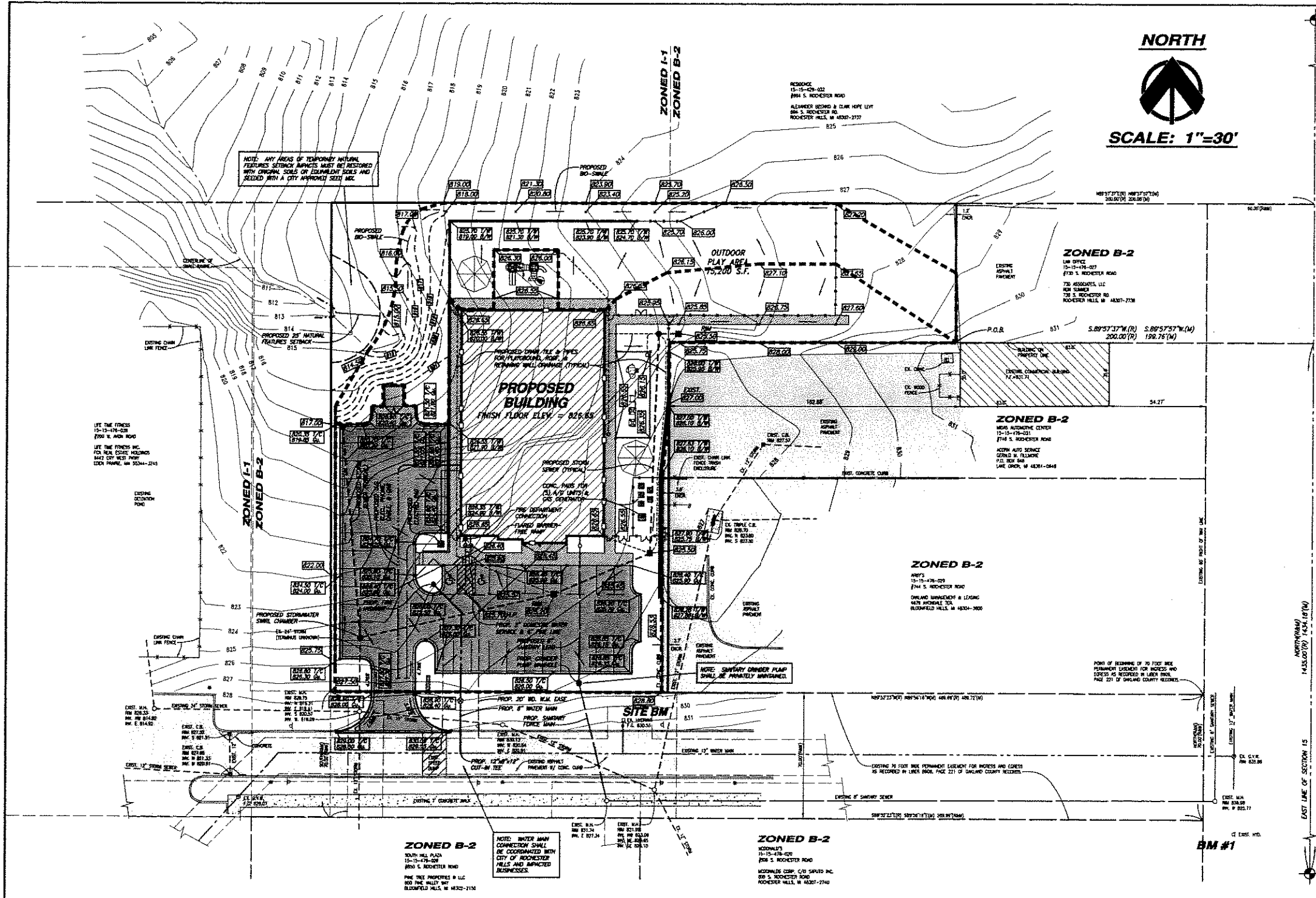
CLIENT: MARTY CZINDNER
400 ANTOINETTE
ROCHESTER HILLS, MI 48302
(248) 510-4466

JOB NO: 08-004
4.1.08
DATE: N.P.R.
CHECKED BY: N.P.R.

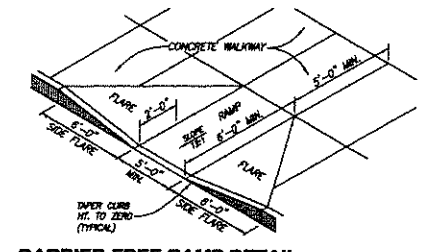
REVISIONS

SHEET **2** OF 4

MUNICIPAL REVIEW NUMBERS
CITY FILE #01-020.2
HRC #20080453.21



S. ROCHESTER ROAD (M-150)
120' WIDE



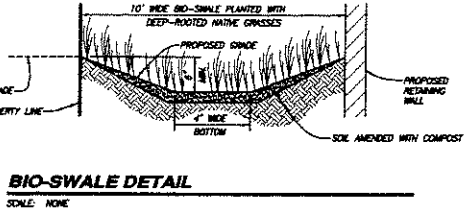
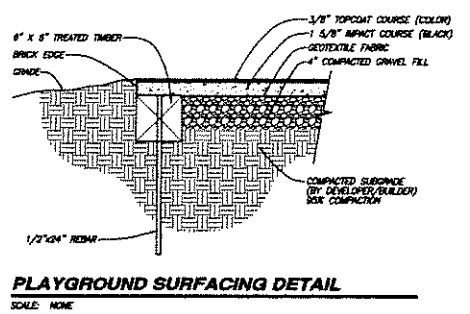
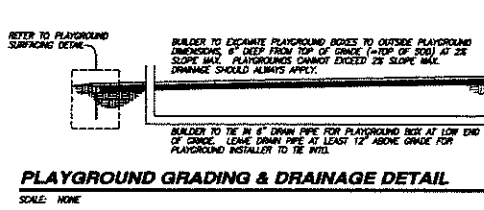
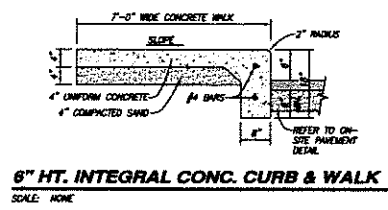
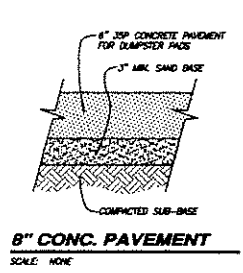
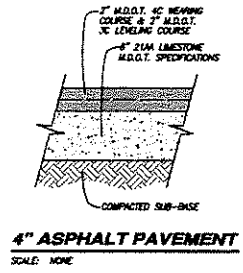
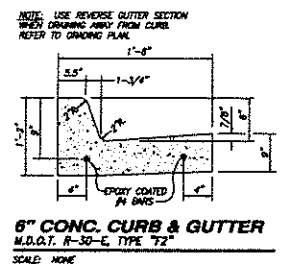
NOT TO BE USED AS CONSTRUCTION DRAWINGS

CONTRACTOR'S NOTE

The locations of existing underground utilities are shown in an approximate way only. The contractor shall determine the exact location of all existing utilities before commencing work. He agrees to be fully responsible for any and all damages which might be occasioned by his failure to locate and preserve any and all underground utilities.

The contractor shall be responsible for adhering to all applicable local, state, and federal standards, specifications, and guidelines for construction.

3 WORKING DAYS BEFORE YOU DIG CALL MISS DIG
 1-800-482-7171
 (TOLL FREE) for the location of underground utilities



APPEX
ENGINEERING, SURVEYING & LAND PLANNING CONSULTANTS
CIVIL ENGINEERING, SURVEYING & LAND PLANNING CONSULTANTS
47748 VAN DYKE AVENUE
SHELBY TOWNSHIP, MI 48317
PHONE: 586-798-5200
FAX: 586-254-5314

Goddard School
FOR BABY CHILDREN'S DEVELOPMENT
PROJECT: MARTY GRUNGER
400 ANTOINETTE
ROCHESTER HILLS, MI 48062
(248) 310-4465

CLIENT: MARTY GRUNGER
400 ANTOINETTE
ROCHESTER HILLS, MI 48062
(248) 310-4465
JOB NO: 08-004
DATE: 4-1-08
DRAWN BY: N.P.R.
CHECKED BY: N.P.R.

REVISIONS:
7-2-08 REVISION PER CITY REVIEW COMMENTS
6-2-08 REVISED PER CITY CONCEPT REVIEW

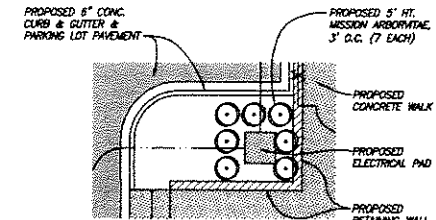
PRELIMINARY GRADING & UTILITY PLAN

SHEET **3** OF 4

MUNICIPAL REVIEW NUMBERS:
CITY FILE #01-020.2
HRC #20080453.21

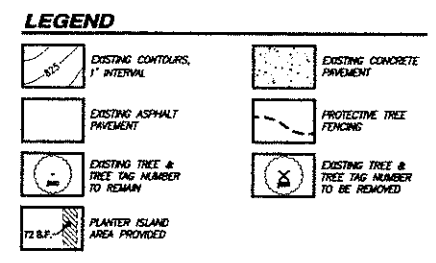
TREE PROTECTION NOTES

- TREE PROTECTIVE FENCING (TPF) SHALL BE ERECTED PER THE PLANS APPROVED BY THE CITY OF ROCHESTER HILLS PLANNING DEPARTMENT. THE TPF MUST BE IN PLACE AND BE INSPECTED BY THE CITY OF ROCHESTER HILLS LANDSCAPE ARCHITECT PRIOR TO THE START OF ANY EXCAVATION OR CONSTRUCTION OPERATIONS. IT IS THE DEVELOPER'S RESPONSIBILITY TO CONTACT THE CITY PLANNING DEPARTMENT AT 1-248-656-4660 TO SCHEDULE A TPF INSPECTION. THE TPF SHALL REMAIN IN PLACE THROUGHOUT THE ENTIRE CONSTRUCTION PROCESS OR UNTIL THE CITY AUTHORIZES THE REMOVAL OR ISSUES A FINAL CERTIFICATE OF OCCUPANCY, WHICHEVER OCCURS FIRST.
- UPON COMPLETION OF GRADING AND THE INSTALLATION OF THE INFRASTRUCTURE A SECOND INSPECTION OF THE TPF AND THE TREES DESIGNATED FOR PRESERVATION IS REQUIRED BY THE CITY OF ROCHESTER HILLS LANDSCAPE ARCHITECT PRIOR TO THE START OF ANY ADDITIONAL CONSTRUCTION. IT IS THE DEVELOPER'S RESPONSIBILITY TO CONTACT THE CITY PLANNING DEPARTMENT AT 1-248-656-4660 TO SCHEDULE THIS INSPECTION.
- UPON COMPLETION OF ALL CONSTRUCTION AND PRIOR TO THE REMOVAL OF THE TPF, THE CITY OF ROCHESTER HILLS LANDSCAPE ARCHITECT MUST INSPECT ALL TREES DESIGNATED TO BE PRESERVED. THE LANDSCAPE PERFORMANCE BOND WILL NOT BE RELEASED UNTIL THE INSPECTION IS COMPLETE AND ALL RELATED ISSUES ARE RESOLVED. IT IS THE DEVELOPER'S RESPONSIBILITY TO CONTACT THE CITY PLANNING DEPARTMENT AT 1-248-656-4660 TO SCHEDULE THIS INSPECTION.
- A FINAL INSPECTION BY THE CITY OF ROCHESTER HILLS LANDSCAPE ARCHITECT IS REQUIRED AT THE END OF THE WARRANTY AND MAINTENANCE PERIOD. THE LANDSCAPE PERFORMANCE BOND WILL NOT BE RELEASED UNTIL THIS INSPECTION IS COMPLETE AND ALL RELATED ISSUES ARE RESOLVED. IT IS THE DEVELOPER'S RESPONSIBILITY TO CONTACT THE CITY PLANNING DEPARTMENT AT 1-248-656-4660 TO SCHEDULE THIS INSPECTION.
- THE TREE CONSERVATION ORDINANCE PROHIBITS ANY CONSTRUCTION OR DEVELOPMENT ACTIVITIES WITHIN THE DRIP LINE OF REGULATED TREES NOT APPROVED FOR REMOVAL, INCLUDING BUT NOT LIMITED TO LAND CLEARING, GRADING, TRENCHING OR FILLING, NO PERSON SHALL PLACE ANY SOLVENTS, BUILDING MATERIAL, CONSTRUCTION EQUIPMENT, SOIL DEPOSITS, OR HARMFUL MATERIALS WITHIN THE DRIP LINE LIMIT OF TREES DESIGNATED FOR PRESERVATION.
- PROPOSED GRADES ARE TO MATCH THE EXISTING ELEVATIONS OUTSIDE THE LIMITS OF THE TPF. NO GRADING EITHER CUT OR FILL IS PERMITTED WITHIN THE DRIP LINE OF ANY TREE DESIGNATED FOR PRESERVATION.
- DURING THE CONSTRUCTION PROCESS NO PERSON SHALL ATTACH ANY DEVICE OR WIRE/CABLE/CORD/PIPE TO AN EXISTING TREE DESIGNATED TO BE PRESERVED.
- ALL UTILITY SERVICE REQUESTS MUST INCLUDE NOTIFICATION TO THE INSTALLER THAT PROTECTED TREES MUST BE AVOIDED. ALL TRENCHING SHALL OCCUR OUTSIDE THE TPF.
- SMAILES SHALL BE ROUTED TO AVOID THE AREA WITHIN THE DRIP LINE OF ANY TREE DESIGNATED FOR PRESERVATION. SMAILES SHALL BE CONSTRUCTED SO AS NOT TO INTERFERE WITH ANY ADDITIONAL FLOW INTO THE DRIP LINE OF A TREE DESIGNATED FOR PRESERVATION.
- IF TREE PROTECTION CANNOT BE MAINTAINED FOR A TREE THROUGHOUT THE ENTIRE PERIOD REQUIRED, THE REPLACEMENT OF THAT TREE WILL BE REQUIRED ON AN INCH FOR INCH BASIS PRIOR TO THE ISSUANCE OF THE CERTIFICATE OF OCCUPANCY.
- REGULATED TREES LOCATED OFF-SITE ON ADJACENT PROPERTIES THAT MAY BE AFFECTED BY CONSTRUCTION OPERATIONS MUST BE PROTECTED AS DEFINED HEREIN.
- THE TPF SHALL CONSIST OF 4-FEET HIGH ORANGE SHAW FENCING TO BE INSTALLED AROUND THE DRIP LINE OF ALL TREES DESIGNATED TO BE SAVED. THIS FENCING SHALL BE SUPPORTED BY 4-FEET LONG METAL 1-1/2" DIA. POSTS 5 FEET ON CENTER AND DRIVEN A MINIMUM OF 24 INCHES INTO THE GROUND. THE TPF SHALL REMAIN UPRIGHT AND SECURELY IN PLACE FOR THE REQUIRED TIME AS SPECIFIED ABOVE.



ELECTRIC PAD SCREENING DETAIL
SCALE: 1"=10"

LANDSCAPE ARCHITECT FOR THIS PROJECT:
JOSEPH COTTONE, R.L.A.
16679 WISLER DRIVE, BROWNSTOWN, MI 48173
(734) 231-0420
REGISTRATION #1155



LANDSCAPING CRITERIA
• PARKING LOT LANDSCAPING:
ISLAND AREA REQUIRED: 150 S.F. / 10 PARKING SPACES
= (150 s.f. / 10) x 40 spaces = 600 s.f.
ISLAND AREA PROVIDED: 1,183 s.f.
PLANTER TREES REQUIRED: 40 parking stalls / 10 = 4 x 150 s.f. = 600 / 300 s.f. = 2 ISLAND TREES REQ'D
PLANTER TREES PROVIDED: 2 trees

TREE REPLACEMENT SUMMARY

TOTAL NUMBER OF TREES SURVEYED (INCLUDING 9 PINES): 171
 WILDS ASH TREES: -25
 WILDS OAK TREES: -3
 MANUS-OFF-SITE TREES: -13
 TOTAL NUMBER OF REGULATED TREES ON-SITE: 130
 NUMBER OF TREES TO BE SAVED: 109
 NUMBER OF TREES TO BE REPLACED: 21

THIS INCLUDES 9 PINES TO BE TRANSPLANTED.
 TOTAL NUMBER OF TREE REPLACEMENT CREDITS REQUIRED: 109

NUMBER OF 3" CALIPER DECIDUOUS REPLACEMENT TREES: 35
 NUMBER OF CREDITS = (35 trees) x (2 credits/tree) = 70

NUMBER OF 9" HT. EVERGREEN REPLACEMENT TREES: 26
 NUMBER OF CREDITS = (26 trees) x (1.5 credits/tree) = 39

TOTAL NUMBER OF CREDITS = 70 + 39 = 109
 TOTAL NUMBER OF CREDITS TO BE PLACED INTO CITY TREE FUND = 0

TREE PLANTING RESTRICTIONS

- TREES AND SHRUBS MAY NOT BE PLANTED WITHIN 4' OF A PROPERTY LINE.
- TREES AND SHRUBS MAY NOT BE PLANTED WITHIN 10' OF A FIRE HYDRANT.
- SHADE TREES ARE NOT TO BE PLANTED WITHIN 5' OF A PUBLIC WALKWAY.
- EVERGREEN TREES AND ORNAMENTAL TREES ARE NOT TO BE PLANTED WITHIN 10' OF A PUBLIC WALKWAY.
- TREES ARE NOT TO BE PLANTED WITHIN 5' OF ANY UNDERGROUND UTILITIES OR WITHIN 15' OF ANY OVERHEAD UTILITIES.
- THE PLANTING OF TREES OR SHRUBS IS NOT PERMITTED WITHIN A RIGHT-OF-WAY.

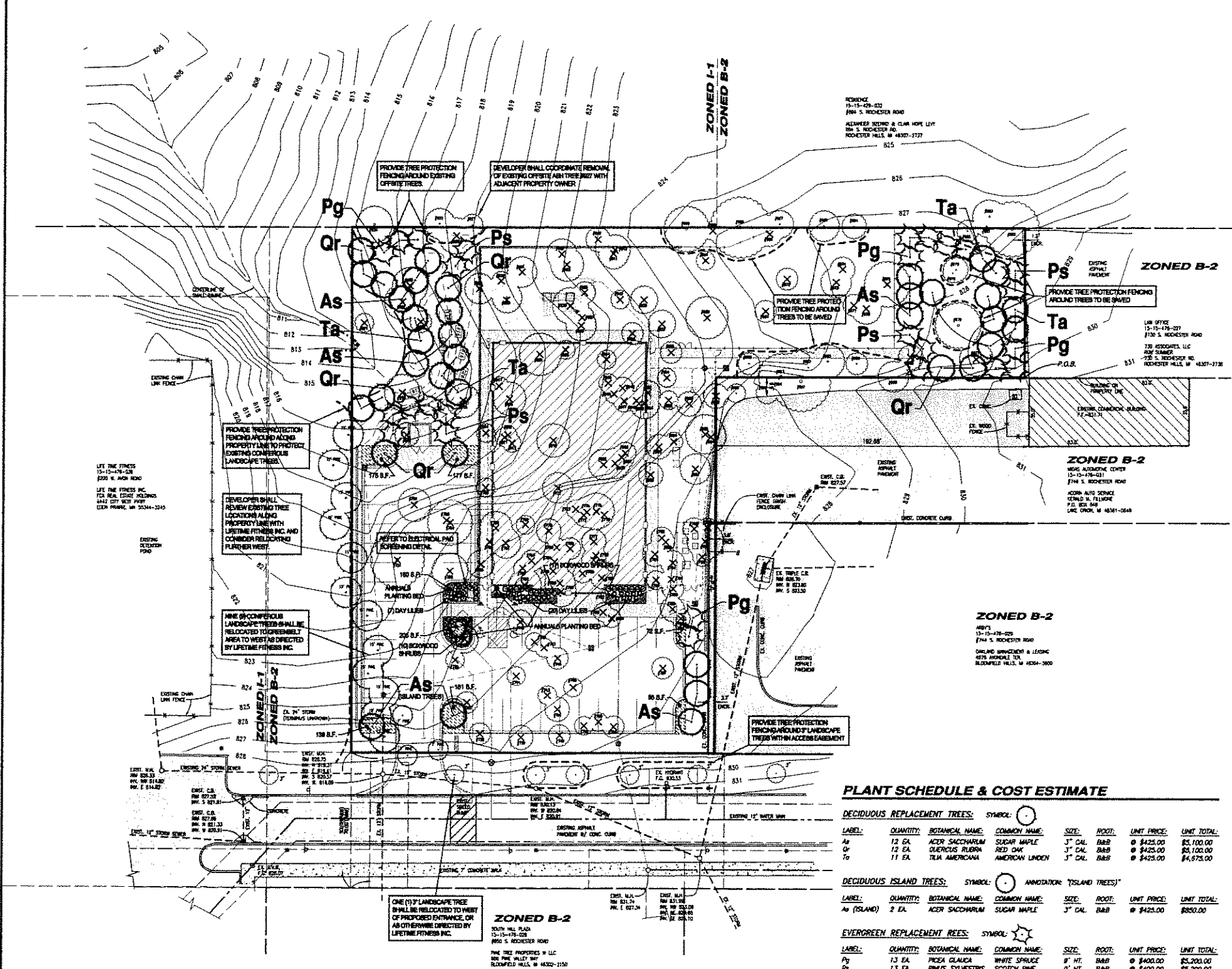
NOT TO BE USED AS CONSTRUCTION DRAWINGS

CONTRACTOR'S NOTE

The location of existing underground utilities are shown in an approximate way only. The contractor shall determine the exact location of all existing utilities before commencing work. He agrees to be fully responsible for any and all damages which might be occasioned by his failure to exactly locate and prevent any and all underground utilities.

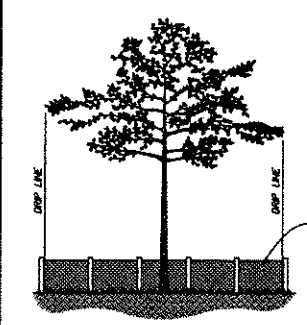
The contractor shall be responsible for adhering to all applicable local, state, and federal standards, specifications, and guidelines for construction.

3 WORKING DAYS BEFORE YOU DIG CALL MISS DIG 1-800-482-7171 (TOLL FREE) for the location of underground utilities.

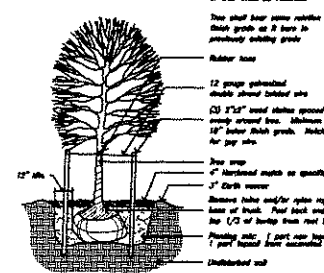


PLANT SCHEDULE & COST ESTIMATE

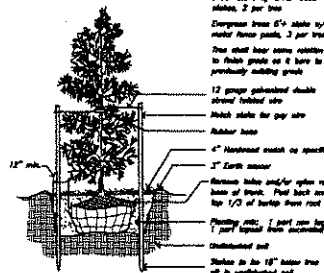
LABEL	QUANTITY	BOTANICAL NAME	COMMON NAME	SIZE	ROOT	UNIT PRICE	UNIT TOTAL
DECIDUOUS REPLACEMENT TREES:							
As	12 EA.	ACER SACHCHARUM	SUGAR MAPLE	3" CAL.	B&B	\$425.00	\$5,100.00
Qr	12 EA.	QUERCUS RUBRA	RED OAK	3" CAL.	B&B	\$425.00	\$5,100.00
To	11 EA.	TILIA AMERICANA	AMERICAN LINDEN	3" CAL.	B&B	\$425.00	\$4,675.00
DECIDUOUS ISLAND TREES:							
As (ISLAND)	2 EA.	ACER SACHCHARUM	SUGAR MAPLE	3" CAL.	B&B	\$425.00	\$850.00
EVERGREEN REPLACEMENT TREES:							
Pg	13 EA.	PICEA GLAUCA	WHITE SPRUCE	9" HT.	B&B	\$400.00	\$5,200.00
Ps	13 EA.	PINUS SYLVESTRIS	SCOTCH PINE	9" HT.	B&B	\$400.00	\$5,200.00
NARROW SCREENING EVERGREENS:							
	7 EA.	THUJA OCCIDENTALIS 'TIDENY'	MISSION ARBORVITAE	5" HT.	B&B	\$50.00	\$350.00
SMALL TREES:							
	1 EA.	AMELANCHIER CANADENSIS	SERVICEBERRY	1.5" CAL./6" HT.	B&B	\$150.00	\$150.00
ADDITIONAL SHRUBS & PLANTINGS:							
	27 EA.	BURKUS SEMPERVIRENS	BOHWOOD	24" SPREAD		\$45.00	\$1,215.00
	27 EA.	HEMEROCALLIS SP.	DAY LILY	1-2 GAL.		\$45.00	\$1,215.00
ADDITIONAL ITEMS:							
ITEM	QUANTITY	INSTALLED UNIT PRICE	UNIT TOTAL				
4" MIN. SHREDDED HARDWOOD BARK MULCH	22 C.Y.	\$27.00	\$594.00				
GRASS SEED & MULCH	1,400 S.Y.	\$2.50	\$3,500.00				
SOIL	12,400 S.F.	\$2.25	\$27,900.00				
IRRIGATION (REFER TO PLAN BY OTHERS)		\$3,000.00	\$3,000.00				
IRRIGATION (REFER TO PLAN BY OTHERS)		\$3,000.00	\$3,000.00				
SUBTOTAL TREE COST:			\$26,625.00				
INSTALLATION COST (20%):			\$5,325.00				
SUBTOTAL TREE COST:			\$31,950.00				
INSTALLATION COST (20%):			\$6,390.00				
SUBTOTAL ADDITIONALS:			\$14,844.00				
TOTAL ESTIMATE:			\$48,414.00				



TREE PROTECTION DETAIL
SCALE: NONE



DECIDUOUS TREE PLANTING DETAIL
SCALE: NONE



EVERGREEN TREE PLANTING DETAIL
SCALE: NONE

APEX ENGINEERING GROUP INC.
CIVIL ENGINEERING, SURVEYING & LAND PLANNING CONSULTANTS
PHONE: 586-739-5200
FAX: 586-254-5214

Goddard School
FOR BABY CHILDREN DEVELOPMENT

CLIENT: MARTY GRONINGER, 400 ANTONIETTE, ROCHESTER HILLS, MI 48062
 JOB NO: 08-004
 DATE: 4.1.08
 DRAWN BY: N.P.R.
 CHECKED BY: N.P.R.

REVISIONS:

TREE REMOVAL PRESERVATION & REPLACEMENT PLAN

SHEET 4 OF 4

MUNICIPAL REVIEW NUMBERS:
CITY FILE #01-0202
HRC #20080453.21

LumenStar

Dimensional Drawings

Fixture	A	B	C	Dist. Wall	Dist. Lbr.
LSR-2	12"	12"	12"	120"	30"
LSR-3	22"	22"	12"	120"	70"
LSR-4	22"	22"	15"	120"	75"

The LumenStar Series features the most advanced lighting technology available today. Vision™ is a patented, revolutionary new reflector system unlike any other. The flat lens, vertical lens, 8.5' tall self-ventilating glass and light solution for high-quality, energy-efficient outdoor lighting. (Down glass level is available when required.)

The clear compact housing style is architecturally pleasing. A durable color-weather powder coat finish in a selection of architectural colors will enhance any application. Computerized precision machinery and quality materials ensure consistency to the highest industry standards.

The LumenStar Series is a proven performer for auto dealerships, shopping centers, parking lots and general area lighting. A wide selection of light sources from 100 watts thru 1000 watts is offered in Metal Halide, High Pressure Sodium, and the new Pulse Start Metal Halide lamp which provides excellent efficiency, longer maintenance and more.

The LumenStar Series is a proven performer for auto dealerships, shopping centers, parking lots and general area lighting. A wide selection of light sources from 100 watts thru 1000 watts is offered in Metal Halide, High Pressure Sodium, and the new Pulse Start Metal Halide lamp which provides excellent efficiency, longer maintenance and more.

Model No.	Optics	Wattage	Source	Voltage	Mounting	Finish	Options
LSR-2	Type II	100 (100)	PH, HPS	120	1/2" Bolt-On Arm (BOAM)	Black (BK)	Emergency Battery Pack (EBP)
		150 (150)	MH, PS, HPS	120	1/2" Bolt-On Arm (BOAM)	Black (BK)	Emergency Battery Pack (EBP)
LSR-3	Type III	100 (100)	PH, HPS	120	1/2" Bolt-On Arm (BOAM)	White (WH)	Emergency Battery Pack (EBP)
		150 (150)	MH, PS, HPS	120	1/2" Bolt-On Arm (BOAM)	White (WH)	Emergency Battery Pack (EBP)
LSR-4	Type IV	100 (100)	PH, HPS	120	1/2" Bolt-On Arm (BOAM)	White (WH)	Emergency Battery Pack (EBP)
		150 (150)	MH, PS, HPS	120	1/2" Bolt-On Arm (BOAM)	White (WH)	Emergency Battery Pack (EBP)
LSR-5	Type V	100 (100)	PH, HPS	120	1/2" Bolt-On Arm (BOAM)	White (WH)	Emergency Battery Pack (EBP)
		150 (150)	MH, PS, HPS	120	1/2" Bolt-On Arm (BOAM)	White (WH)	Emergency Battery Pack (EBP)
LSR-6	Type VI	100 (100)	PH, HPS	120	1/2" Bolt-On Arm (BOAM)	White (WH)	Emergency Battery Pack (EBP)
		150 (150)	MH, PS, HPS	120	1/2" Bolt-On Arm (BOAM)	White (WH)	Emergency Battery Pack (EBP)
LSR-7	Type VII	100 (100)	PH, HPS	120	1/2" Bolt-On Arm (BOAM)	White (WH)	Emergency Battery Pack (EBP)
		150 (150)	MH, PS, HPS	120	1/2" Bolt-On Arm (BOAM)	White (WH)	Emergency Battery Pack (EBP)

VISIONAIRE LIGHTING
Performance in A Whole New Light

LumenStar

Mounting

All housings are manufactured using technologically advanced computerized numerical control (CNC) machinery. Precision sheared and formed 100% aluminum, corrosion resistant aluminum.

The computerized CNC machinery enables all LumenStar housings to be constructed reliably, efficiently, and uniformly to existing 100/500/2000 fixtures. All external hardware is stainless steel.

Lens and Door Assembly

Removable door assembly is CNC precision sheared and formed from one piece, 6061 grade, corrosion resistant aluminum with captive stainless steel fasteners.

The clear lens is a flat tempered clear safety glass, secured by captive lens retainers and sealed with silicone caulking to provide complete weather and insect protection.

An optional convex glass lens is available when required.

Vision™ Optical System (Patented)

Reflector is precision CNC cut and bent, multi-faceted, segmented, highly efficient, 80% reflective aluminum. Available in the distribution pattern.

TAA Autoclave Reflector is Flat Polishable.

Top-lens reflector only.

Quick-Change Finish

The finish is a "Quick-Change" feature, chemically pretreated through a multi-stage process, electrocoat applied, thermally cured, and powder coated with a minimum of 3.5 mil thickness. Finish is oven baked at 400 degrees Fahrenheit to provide maximum adhesion and finish hardness. All finishes are available in standard and custom colors.

Mounting

A rounded extruded aluminum, bolt-on arm (BOA), with an in-pole nut base, securing (7) 1/8" dia. stainless steel bolts with stainless steel washers is standard. A Round-Over Pole Adapter (ROPA) is required for securing to 3" - 4" Round Poles.

Electrical Assembly

All housings are provided with 100/500/2000 wattage auto transformers. Details & options of providing consistent lamp starting down to 25 degree Fahrenheit. Available in:

- Metal Halide (MH)
- High Pressure Sodium (HPS)
- High Pressure Sodium (HPS)

Socket is plastic porcelain medium or mogul base with nickel plated contacts, rated at 4K (2K for 1000 watt) and 500V.

Options

- Photo cell
- Photo resistor
- Convex glass lens
- Round side light shield
- Quartz resistor
- Anti-fog

Please contact factory for custom options.

Lighting

LumenStar is a "Dark Sky Friendly" fixture for low locations.

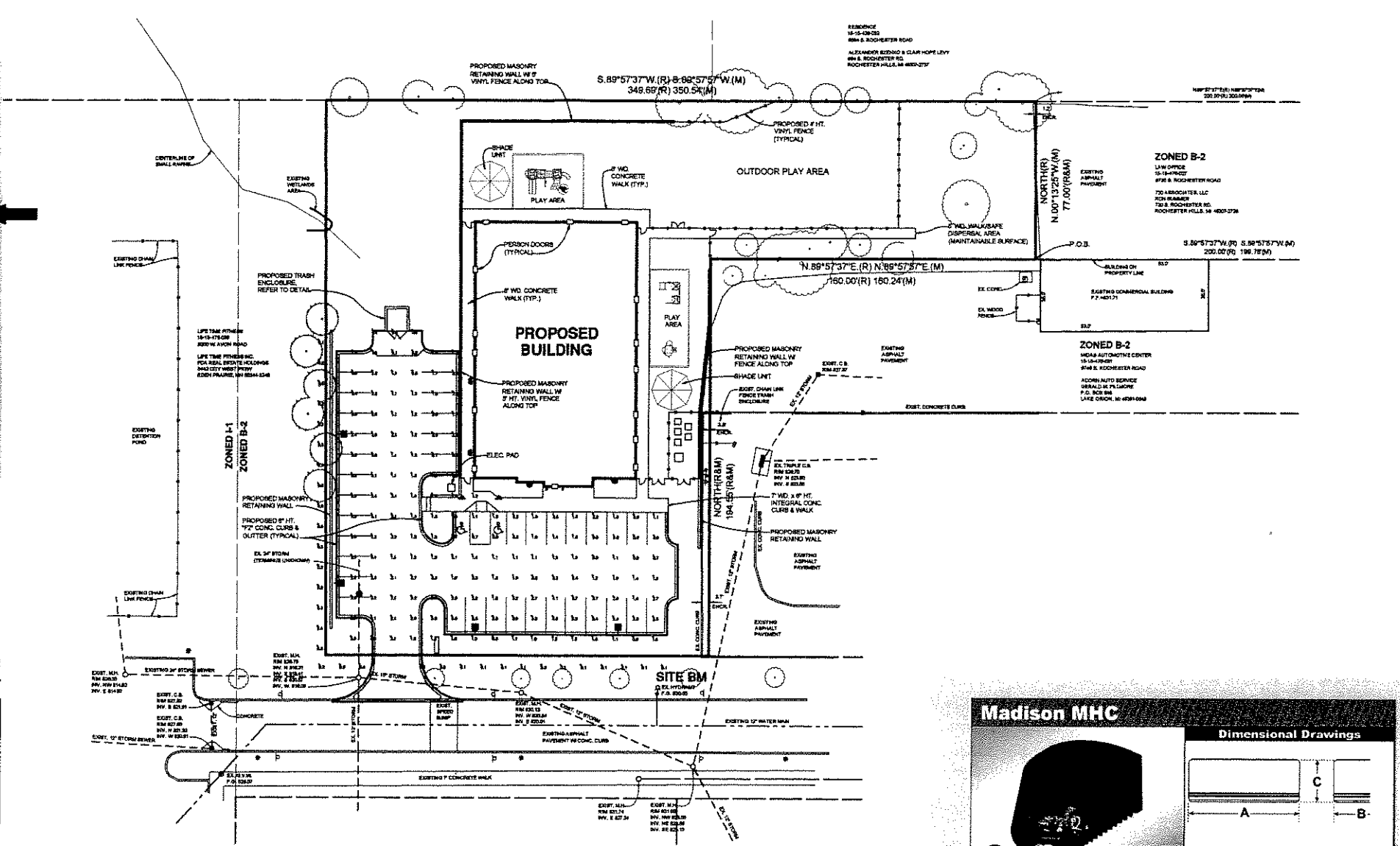
Dark Sky Friendly™ certified by the International Dark Sky Association. (Not low models only.)

Mounting Curves

Size Two	Size Two	Size Two	Size Four
Type II 400w MFLFD 200 Mounting Height Foot Candle Key A=2, B=1, C=1, D=2, E=1	Type II 400w MFLFD 200 Mounting Height Foot Candle Key A=2, B=1, C=1, D=2, E=1	Type II 400w MFLFD 200 Mounting Height Foot Candle Key A=2, B=1, C=1, D=2, E=1	Type V 1000w MFLFD 400 Mounting Height Foot Candle Key A=2, B=1, C=1, D=2, E=1

LSR-2-3 & 4: 4.6' or 10' Long x 6' Tall x 2' Wide
 RAMP: 10' Tall x 6' Wide
 LSR-2: 8.9' Tall
 LSR-3 & 4: 11.5' Tall

Fixture with Arm	2.2'	4.0'	4.4'	6.0'	5.1'	7.1'	2.6'
LSR-2							
LSR-3							
LSR-4							



Fixture Summary

Label	Qty	Unit	Ang	Hgt	Angle	Beamlet
LSR-2	1	Fixture	1.52	4.3	0.3	0.40
LSR-3	1	Fixture	2.28	0.5	0.1	2.30
LSR-4	1	Fixture	2.28	0.5	0.1	2.30

Luminaire Schedule

Symbol	Qty	Label	Arrangement	Luminaire	L.P.	Description
LSR-2	1	LSR-2	Single	Madison MHC-1	150	Madison MHC-1 150-1000-1000-1000 @ 10' Int. 15'
LSR-3	1	LSR-3	Single	Madison MHC-1	150	Madison MHC-1 150-1000-1000-1000 @ 10' Int. 15'

Madison MHC

Dimensional Drawings

Fixture	A	B	C	Dist. Wall	Dist. Lbr.
MHC-1	12"	12"	7"	170"	30"

The Madison MHC Series is an architecturally designed, low profile, energy efficient, and mounted luminaire that is ideal for parking lots, shopping malls, courtyards, and office buildings.

The housings and door frame are made of heavy duty, corrosion resistant cast aluminum with decorative recessed and tool-less entry.

The optical system is optically engineered aluminum, designed for wide, medium, and narrow beam applications. Please consult factory for distribution options.

The lens is a clear, tempered, flat glass, secured by patented lens retainers, fully protected with non-sticky silicone gasket.

The finish is a "Quick-Change" feature, chemically pretreated through a multi-stage process, electrocoat applied, thermally cured, and powder coated with a minimum of 3.5 mil thickness. Finish is oven baked at 400 degrees Fahrenheit to provide maximum adhesion and finish hardness.

The socket is a CWA or HPS regulating auto transformer, available in MH, HPS, Pulse Start MH, and energy efficient Compact Fluorescent. Emergency battery packs also available.

Model No.	Optics	Wattage	Source	Voltage	Mounting	Finish	Options
MHC-1	Wide Throw (WT)	400 (400)	PH, HPS	120	1/2" Bolt-On Arm (BOAM)	Black (BK)	Emergency Battery Pack (EBP)
		150 (150)	MH, PS, HPS	120	1/2" Bolt-On Arm (BOAM)	Black (BK)	Emergency Battery Pack (EBP)
MHC-2	Medium Throw (MT)	400 (400)	PH, HPS	120	1/2" Bolt-On Arm (BOAM)	White (WH)	Emergency Battery Pack (EBP)
		150 (150)	MH, PS, HPS	120	1/2" Bolt-On Arm (BOAM)	White (WH)	Emergency Battery Pack (EBP)
MHC-3	Forward Throw (FT)	400 (400)	PH, HPS	120	1/2" Bolt-On Arm (BOAM)	White (WH)	Emergency Battery Pack (EBP)
		150 (150)	MH, PS, HPS	120	1/2" Bolt-On Arm (BOAM)	White (WH)	Emergency Battery Pack (EBP)
MHC-4	DL 1500	400 (400)	PH, HPS	120	1/2" Bolt-On Arm (BOAM)	White (WH)	Emergency Battery Pack (EBP)
		150 (150)	MH, PS, HPS	120	1/2" Bolt-On Arm (BOAM)	White (WH)	Emergency Battery Pack (EBP)
MHC-5	DL 3000	400 (400)	PH, HPS	120	1/2" Bolt-On Arm (BOAM)	White (WH)	Emergency Battery Pack (EBP)
		150 (150)	MH, PS, HPS	120	1/2" Bolt-On Arm (BOAM)	White (WH)	Emergency Battery Pack (EBP)

VISIONAIRE LIGHTING
Performance in A Whole New Light



ENGINEERING INC.
Consulting Engineers
 5608 N. Charlesworth St.
 Dearborn Hts. Michigan 48127
 Tel: (313) 565-5580
 Fax: (313) 565-9818
 email: jredengineering@comcast.net

BUILDER:
MARTY GINZINGER

PROJECT:
GODDARD SCHOOL
 ROCHESTER RD.
 ROCHESTER HILLS, MI

ISSUES/REVISIONS:	ISSUE DATE
PERMITS	06/06/08

SHEET TITLE
SITE PHOTOMETRICS PLAN

(DO NOT SCALE DRAWINGS)
DATE: 06/06/08
APPROVED BY: E.C.
CHECKED BY: B.D.
DESIGNED BY:
DRAWN BY:
ARCH/ENG. SEAL:

JRED PROJECT NUMBER
08061

SHEET NUMBER

S-1

**GODDARD SCHOOL FOR
EARLY CHILD DEVELOPMENT**

ROCHESTER HILLS, MICHIGAN

PROJECT # 01563916

ISSUE DATE: 5/23/08

SHEET 1 OF 1

DATE REVISIONS

5/27/08 REVISED BY: B. IMHOFF

IRRIGATION LEGEND

- HUNTER, PGP SERIES, GEAR DRIVEN ROTOR, W/ MPR NOZZLE
- ⊙ RAIN BIRD, 1800 SERIES, 4" POP UP W/ MPR NOZZLE
- ⊗ RAIN BIRD, PGA SERIES, ELECTRIC VALVE, 1"
- ⊠ HUNTER, ICC-1600PL, AUTOMATIC CONTROLLER
- TAP LOCATION, 1"
- ▽ FEBCO, 765 SERIES, PRESSURE VACUUM BREAKER, 1"
- POLY MAINLINE, 100 PSI, NON NSF, 18" BURY, SIZE 1"
- POLY LATERAL, 100 PSI, NON NSF, 12" BURY, SIZE 1"
- PVC SLEEVING, CLASS 200, BE, SIZE AS SHOWN

LATERAL PIPE SIZE CHART FOR POLY

1" 1 - 12 GPM

IRRIGATION SPECIFICATIONS

1. ALL WORK IS TO BE IN COMPLIANCE WITH ALL LOCAL, STATE AND FEDERAL CODES AND ORDINANCES.
2. ALL UNDERGROUND ELECTRICAL CONNECTIONS ARE TO BE MADE WITH 3-M WIRE CONNECTORS, DBY.
3. ALL AUTO CONTROL VALVES ARE TO BE INSTALLED IN VB-12 VALVE BOXES OF APPROPRIATE SIZE.
4. ALL CONTROL WIRING DOWNSTREAM OF THE CONTROLLER IS TO BE 16 AWG, UL APPROVED FOR DIRECT BURY.
5. ALL ROTORS AND SPRAY POP-UPS SHALL BE INSTALLED ON SWING PIPE.
6. ALL QCV SHALL BE INSTALLED ON 3-ELBOW PVC SWING JOINTS.
7. SYSTEM DESIGN BASED UPON 12 GPM @ 60 PSI.
8. ANY CHANGES IN AVAILABILITY OF SUPPLY SHOULD BE NOTED AND MODIFICATIONS TO THE DESIGN SHOULD BE MADE.
9. CONTRACTOR TO VERIFY WATER PRESSURE AND AVAILABILITY PRIOR TO INSTALLATION.
10. ANY IRRIGATION PIPING SHOWN OUTSIDE OF CURBS FOR CLARITY ONLY.
11. 120V. TO CONTROLLER AND COPPER STUB, BY OTHER THAN IRRIGATION CONTRACTOR.

IRRIGATION PLAN

SCALE: 1" = 20'

DESIGNED BY: B. IMHOFF

CHECKED BY: B. IMHOFF

APPROVED BY: C. PAYNE

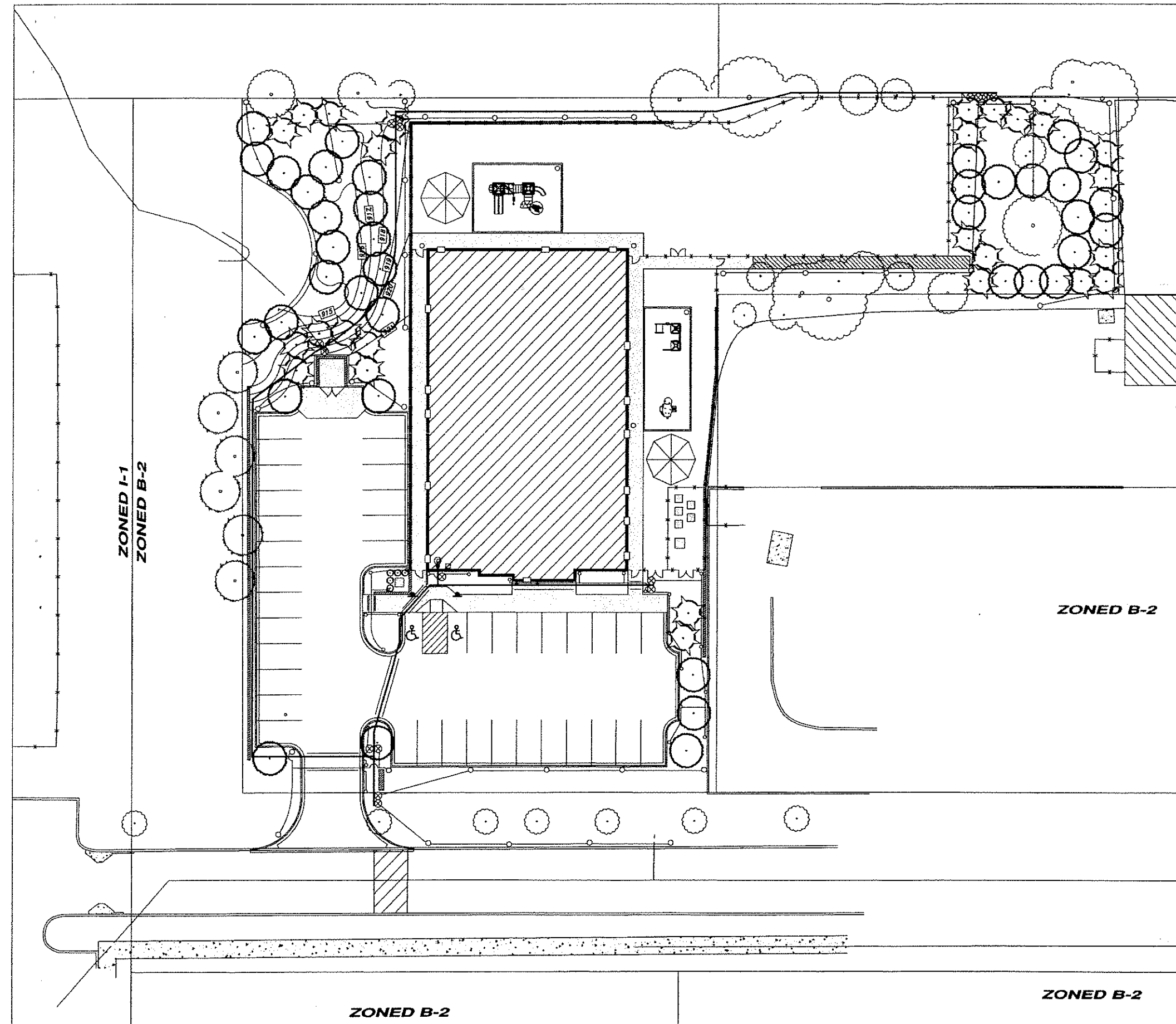


IRRIGATION PLAN



**JOHN DEERE
LANDSCAPES**

650 Stephenson Highway
Troy, MI 48063
PH: 248.588.2100
FAX: 248.588.3528
www.JohnDeereLandscapes.com
cpiwonski@johndeerelandscapes.com



GENERAL NOTES

- DIMENSIONS ARE FROM FACE OF STUD TO FACE OF STUD UNLESS NOTED OTHERWISE (N.O.)
- ALL INTERIOR WALLS ARE 3 1/2" HOOD STUDS UNLESS NOTED OTHERWISE.
- ALL EXTERIOR WALLS ARE 5 1/2" HOOD STUDS W/ 1/2" SHEATHING UNLESS NOTED OTHERWISE.
- GENERAL CONTRACTOR SHALL VERIFY ALL DIMENSIONS AND CONDITIONS PRIOR TO COMMENCEMENT OF THE WORK.
- FRAMING CONTRACTOR SHALL PROVIDE SOLID HOOD BLOCKING AT ALL WALL MOUNTED FIXTURES, INCLUDING, BUT NOT LIMITED TO - HALL MOUNTED SHELVING, BASE AND UPPER CABINETS, CUBBIES, CLOSET SHELVING AND RODS, HALL MOUNTED DOOR STOPS, TOILET ROOM PARTITIONS, LAVS, GRAB BARS, MIRRORS, SOAP DISPENSERS, WASTE RECEPTACLES, TOILET PAPER DISPENSERS, MOP SINK, AND ACCESSORIES.
- FIRE EXTINGUISHER CABINETS AND HANGING FIRE EXTINGUISHERS (FEC AND HFE) TO BE LOCATED PER LOCAL FIRE CODES. (PROVIDE BLOCKING AND KEEP CLEAR OF ALL ELECTRICAL AND PLUMBING LINES).
- SEE SECTION 1/A4.2 FOR TYP. CLOSET SHELVING AND SECTION 8/A4.2 FOR PANTRY SHELVING.
- 40" HIGH CORNERS GUARDS SHALL BE INSTALLED ON ALL OUTSIDE CORNERS THROUGHOUT THE BUILDING.
- A MIN. CLEAR AREA OF 18" IS REQUIRED TO THE SIDE OF EACH DOOR STRIKE JAMB ON THE FULL SIDE.
- ALL COUNTERTOP EDGES AND CORNERS SHALL BE ROUNDED.
- MINI BLINDS SHALL BE INSTALLED ON ALL OUTSIDE WINDOWS WITH CHORD TIE-BACKS. (MIN. 52" A.F.F.)
- SEE 9/A4.1 FOR WALL HANG CHILD HAND WASH LAVATORY MOUNTING HEIGHTS IN CLASSROOMS.
- SEE 12 & 13/A4.1 FOR PHONE DUPLEX AND LIGHT SWITCH MOUNTING HEIGHTS IN CLASSROOMS.
- SEE 10/A4.2 FOR SCREEN PANEL SECTION LOCATED IN TOILET 122. PROVIDE SOLID BLOCKING AT ALL CONNECTIONS TO WALL.
- ADD 24" WIDE BY 16" DEEP SHELF ABOVE PHONE SERVICE FOR NETWORKING HARDWARE IN MECHANICAL 106 AS SHOWN.

GREG STAFFORD & ASSOCIATES
 A.I.B.D.
 10 SQUARE LAKE ROAD
 SUITE 304
 BLOOMFIELD HILLS
 MICHIGAN 48302

COPYRIGHT & OWNERSHIP OF DOCUMENTS

SIGNATURE _____
 SEAL _____

DATE: 04-0-06
 PROJECT NO.: 00000
 CAD REFERENCE NO.: AUTOCAD 2004
 PLOT REFERENCE NO.: NONE
 DRAWING SCALE: SEE DRAWING

REVISIONS		
NO.	DATE	REVISION



PROJECT TITLE

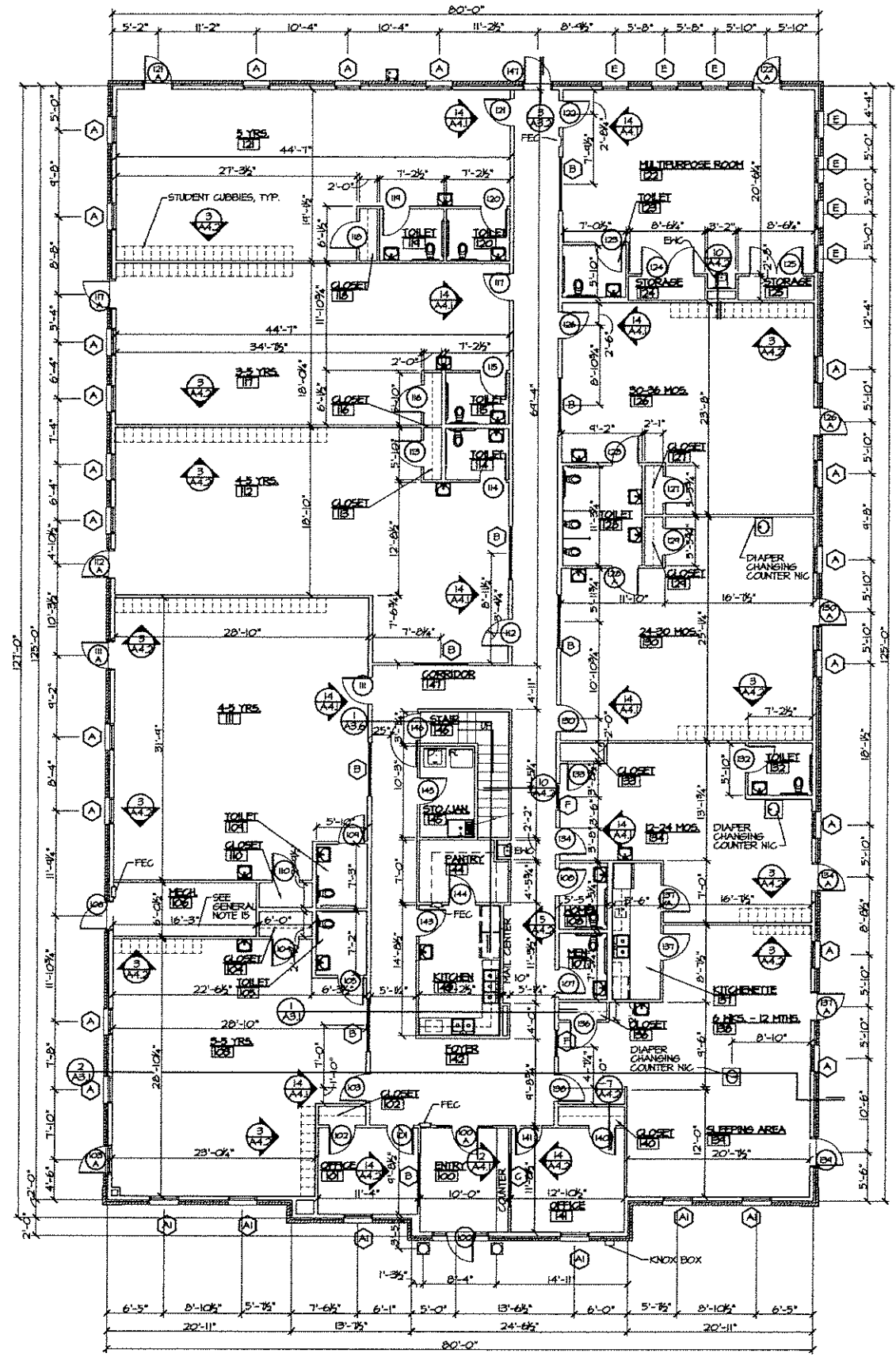
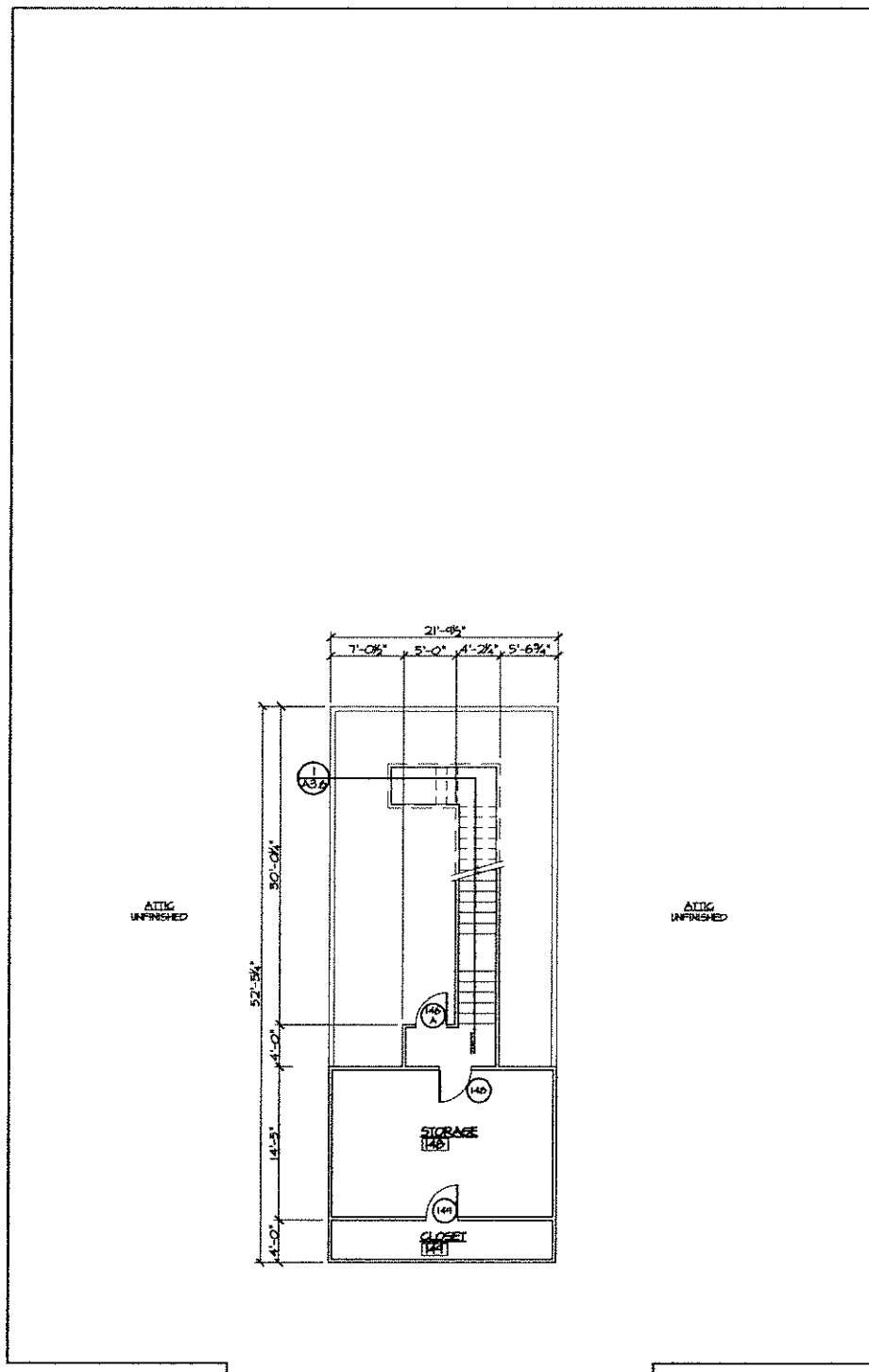
THE GODDARD SCHOOLS
 FOR EARLY CHILDHOOD DEVELOPMENT

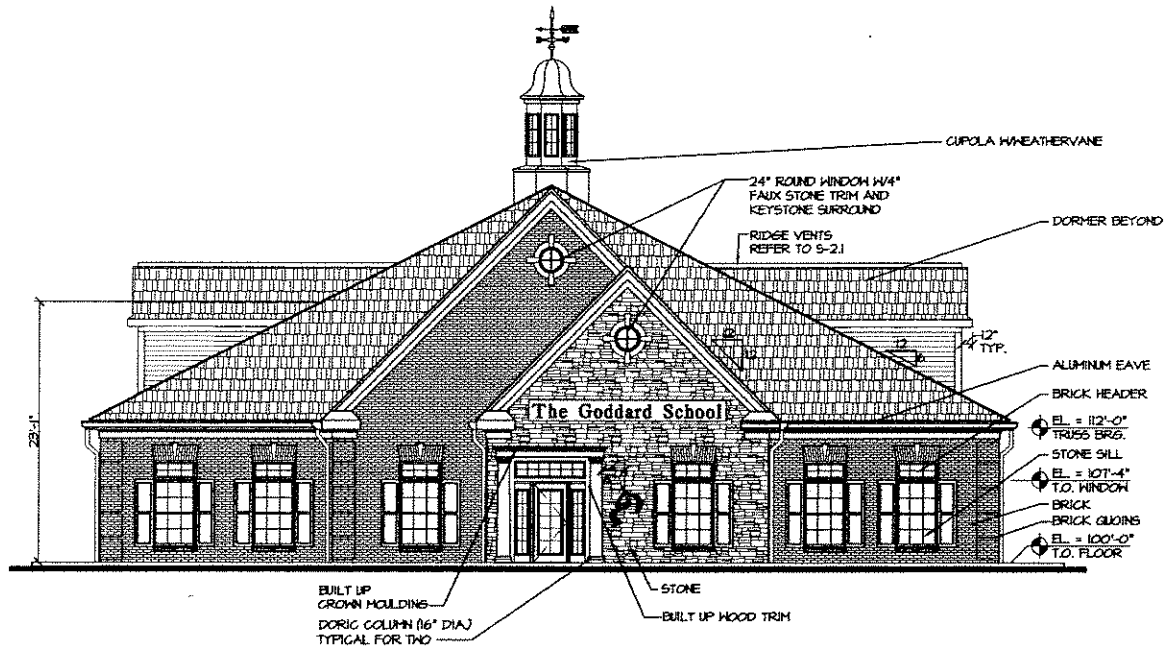
ROCHESTER ROAD
 ROCHESTER HILLS, MICHIGAN

48306

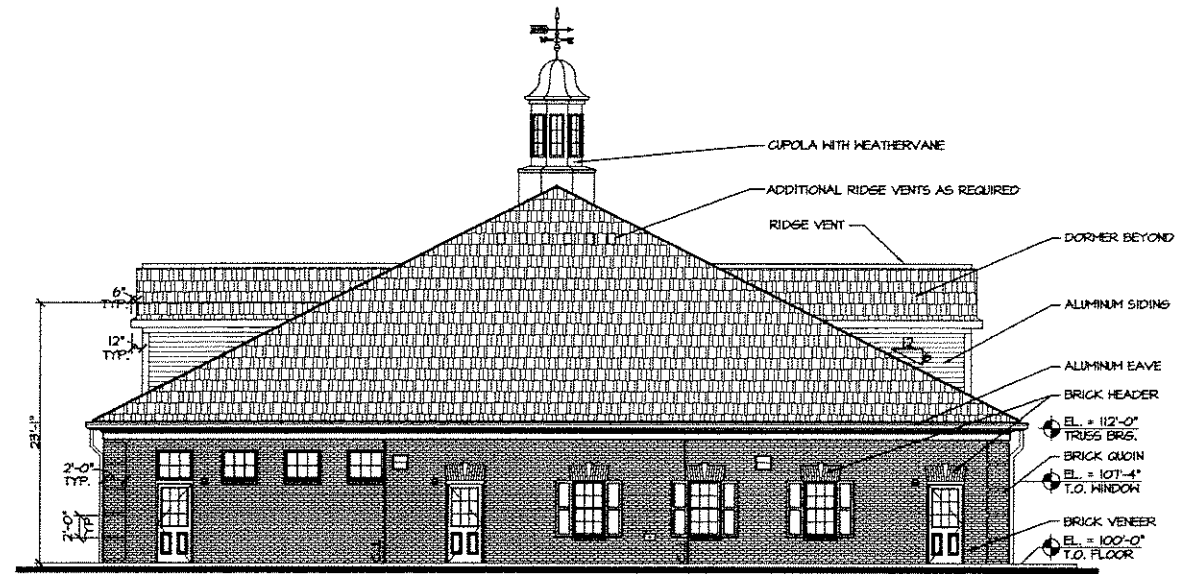
SHEET TITLE
FLOOR PLAN
 SHEET NUMBER

A.I.I.

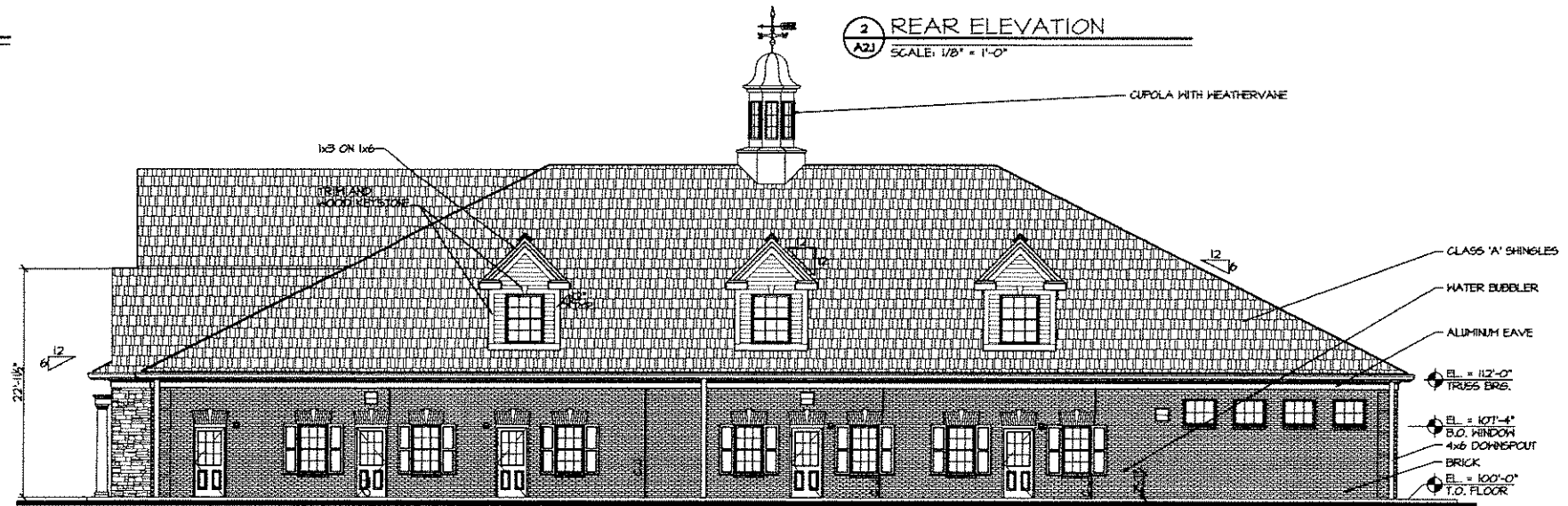




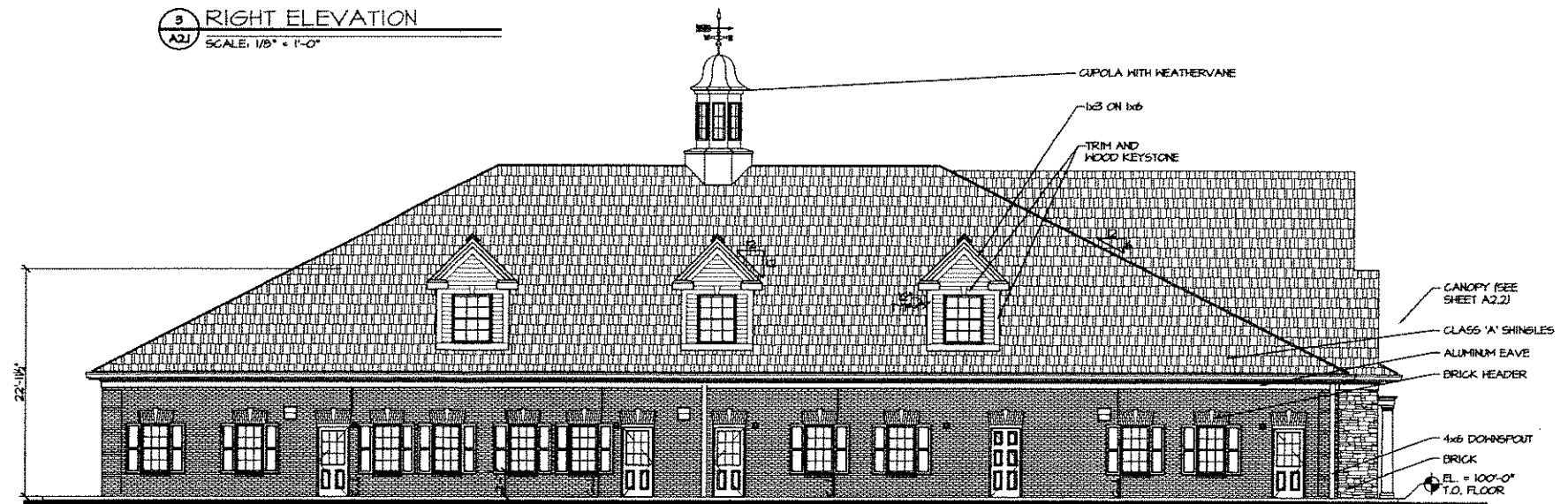
1 FRONT ELEVATION
 A2J SCALE: 1/8" = 1'-0"



2 REAR ELEVATION
 A2J SCALE: 1/8" = 1'-0"



3 RIGHT ELEVATION
 A2J SCALE: 1/8" = 1'-0"



4 LEFT ELEVATION
 A2J SCALE: 1/8" = 1'-0"

SIGNATURE _____

SEAL _____

DATE	04/04/06
PROJECT NO.	00000
CAD REFERENCE NO.	AUGCAD 2006
PLOT REFERENCE NO.	NONE
DRAWING SCALE	SEE DRAWING

REVISIONS	DATE	BY	REASON



PROJECT TITLE

THE GODDARD SCHOOLS
 FOR EARLY CHILDHOOD DEVELOPMENT
 ROCHESTER ROAD
 ROCHESTER HILLS, MICHIGAN

SHEET TITLE

EXTERIOR ELEVATIONS

SHEET NUMBER

A2.1

SIGNATURE _____

SEAL _____

DATE 04/04/09
 PROJECT NO. 00000
 CAD REFERENCE NO. AUTOCAD 2004
 PLOT REFERENCE NO. NONE
 DRAWING SCALE SEE DRAWING

REVISIONS		
NO.	DATE	DESCRIPTION



PROJECT TITLE

THE GODDARD SCHOOLS
 FOR EARLY CHILDHOOD DEVELOPMENT

48306

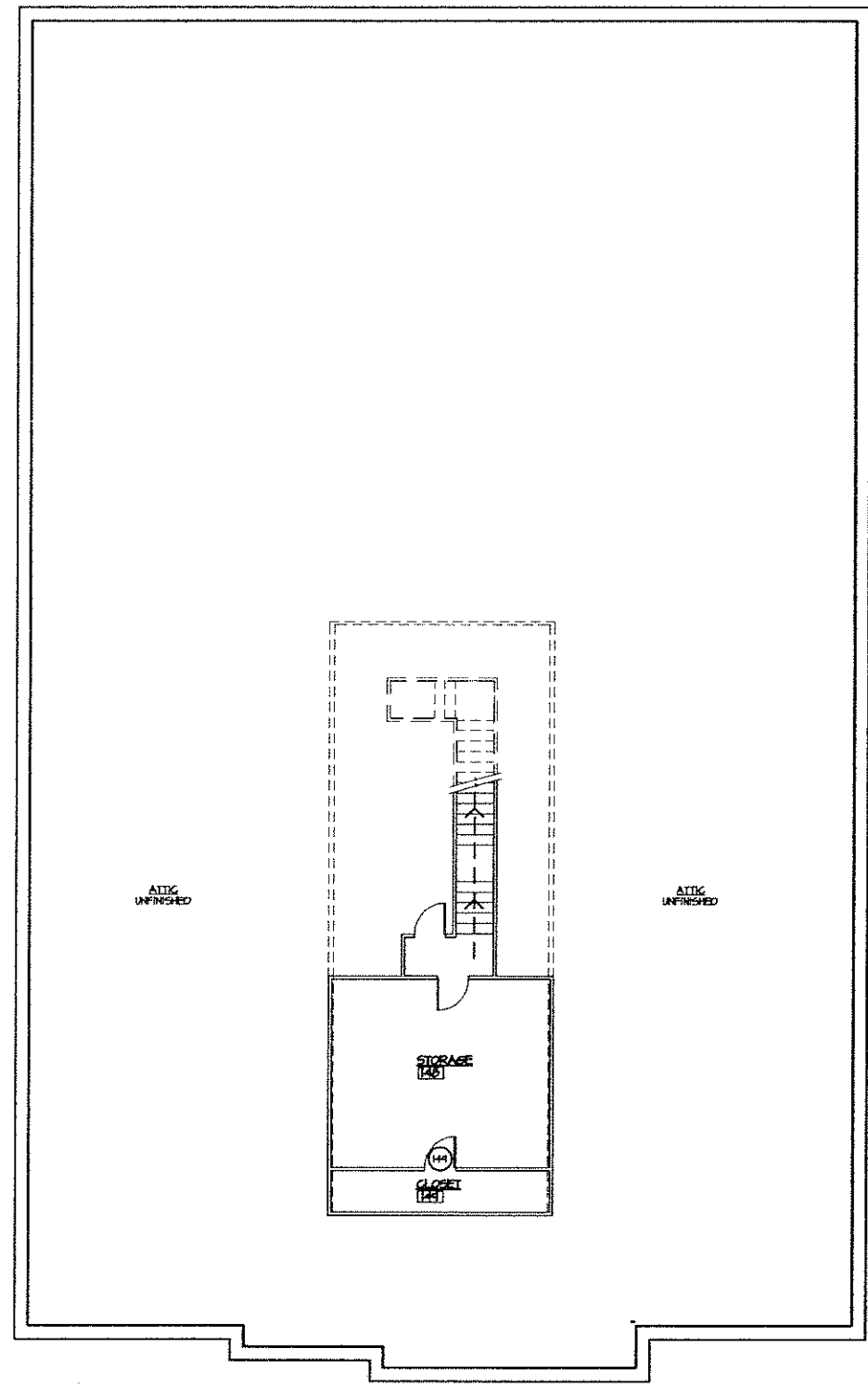
ROCHESTER ROAD
 ROCHESTER HILLS, MICHIGAN

SHEET TITLE

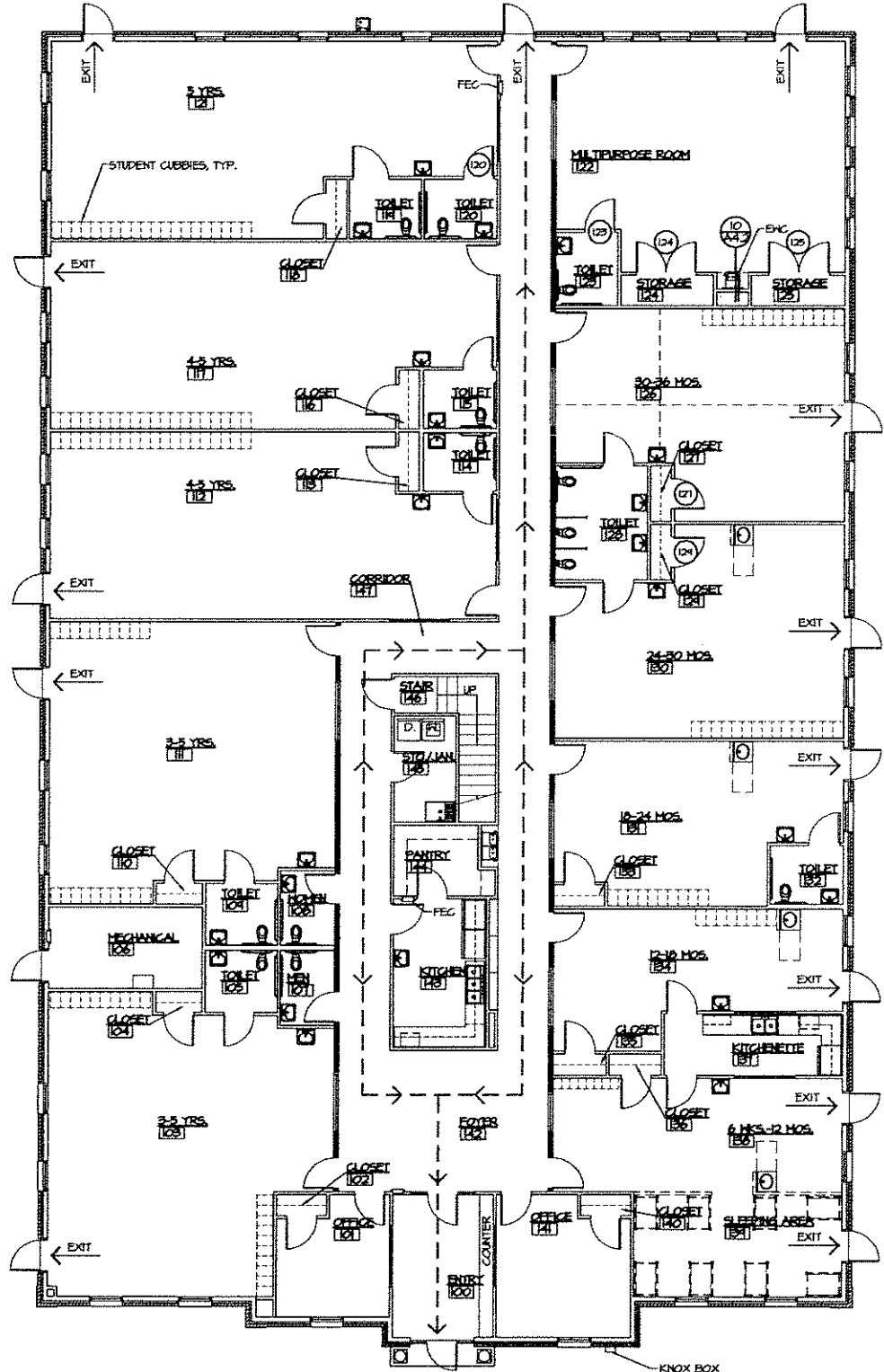
FIRE ESCAPE PLAN

SHEET NUMBER

F.1.1



1 ATTIC PLAN
 SCALE: 1/4" = 1'-0"



2 FLOOR PLAN
 SCALE: 1/4" = 1'-0"

