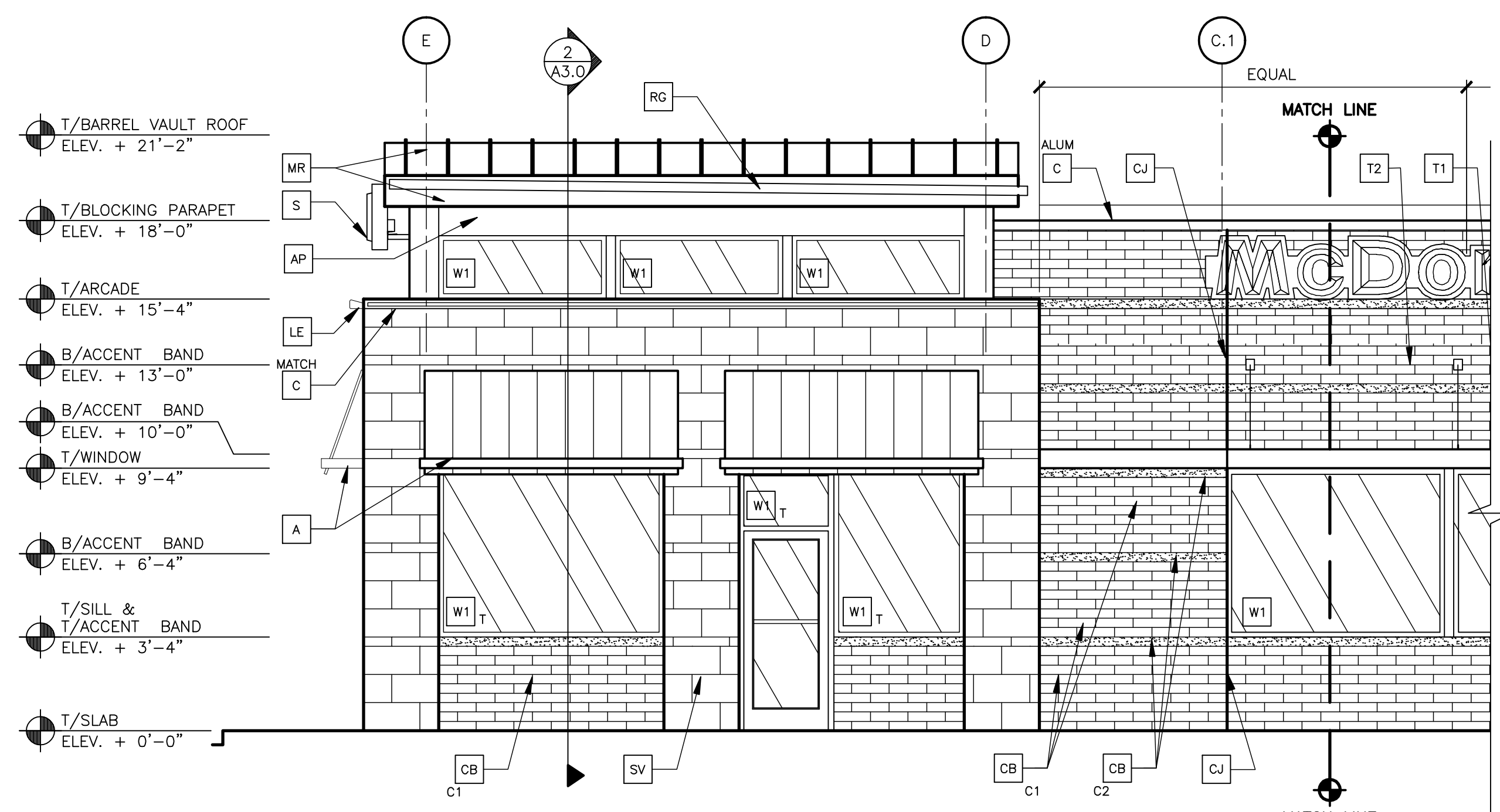
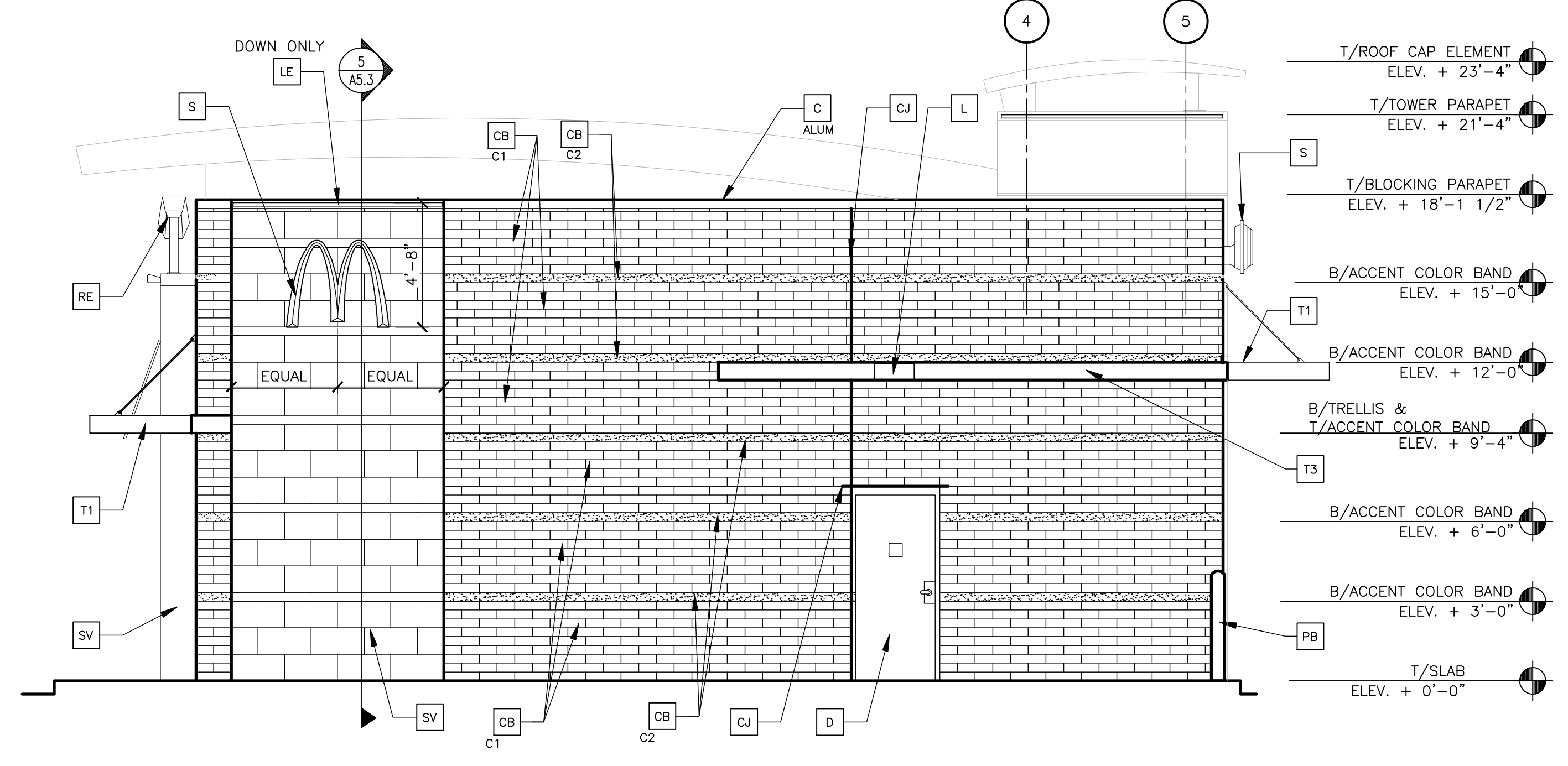


**1 NON DRIVE-THRU ELEVATION**  
 1/4" = 1'-0"  
 (SEE ELEVATION 2/A2.1 FOR CONTINUATION OF ELEVATION)



**2 NON DRIVE THRU ELEVATION**  
 1/4" = 1'-0"  
 (SEE ELEVATION 1/A2.1 FOR CONTINUATION OF ELEVATION)



**3 REAR ELEVATION**  
 1/4" = 1'-0"

**KEY NOTES:**

- |  |  |  |  |  |   |
|--|--|--|--|--|---|
| <b>A</b> METAL AWNING - UNDER SEPARATE PERMIT, COLOR TO BE ALTERNATING STRIPES TO MATCH PANTONE 123C AND 109C  | <b>C</b> METAL COPING - COLOR = ALUMINUM                     | <b>FB</b> CO2 FILL BOX (EQPM SCHEDULE ITEM 49.00)  | <b>MR</b> METAL ROOF - STANDING SEAM W/ALUMINUM FINISH FASCIA TRIM, COLOR TO BE "YELLOW - PANTONE COLOR #109U" | <b>RO</b> ROOF DRAIN OVERFLOW PIPE PAINT TO MATCH SURROUNDING MATERIAL   | <b>T3</b> 2X8 WALL FASCIA - REFER TO SIM. DETAIL 3 ON SHEET A5.1  |
| <b>AP</b> ALUMINUM PANEL SYSTEM - COLOR TO MATCH BENJAMIN MOORE 2125-30 GRAY SHOWER  | <b>CJ</b> METAL COPING - COLOR TO MATCH SURROUNDING MATERIAL | <b>FB BO</b> OPTIONAL BULK OIL FILL BOX (EQPM SCHEDULE ITEM 700.18) - CONFIRM USE WITH MCD PROJECT MANAGER               | <b>PB</b> PIPE BOLLARD - PAINTED YELLOW  | <b>S</b> McDONALD'S SIGNAGE BY OTHERS - UNDER SEPARATE PERMIT.   | <b>W1</b> EXTERIOR WINDOW ASSEMBLY - SEE A5.0<br>T = TEMPERED GLASS   |
| <b>CB</b> CONCRETE BRICK, TYPE- BELLA BRIK CONTACT: CONSUMERS CONCRETE PRODUCTS (616-243-3651)<br>COLOR:<br>C1 = OLYMPIA BLEND TEXTURE, SMOOTH FACE<br>C2 = MIDLAND, SMOOTH FACE | <b>ML</b> CONTROL JOINT, SEE DETAIL 7/A4.1                   | <b>L</b> LIGHT FIXTURE (WALL SCONCE) - SEE ELECTRICAL  | <b>PT</b> (RMHC) COIN COLLECTOR  | <b>SV</b> STONE VENEER- TYPE: ROCKCAST ST003, COLOR: BUFFSTONE, TEXTURE: SMOOTH, SIZE: 4"x12"x24" NOM.<br>ACCENT STRIPE- TYPE: ROCKCAST ST204, COLOR: BUFFSTONE, TEXTURE: CHISELED, SIZE: 4"x4"x24" NOM. | <b>W2</b> DRIVE-THRU WINDOW BY READY ACCESS CONFIRM MODEL, OPTIONS, AND SIZE WITH MCD AREA CONSTRUCTIO MANAGER OPTIONS INCLUDE: TRANSOM (SHOWN)<br>SLIDE DIRECTION: RL = RIGHT TO LEFT LR = LEFT TO RIGHT |
| <b>D</b> HOLLOW METAL DOOR - PAINT TO MATCH COLOR OF SURROUNDING MATERIAL  | <b>LE</b> UP & DOWN LED LIGHTING - SEE ELECTRICAL            | <b>ML</b> METAL LETTERING - BY OTHERS  | <b>RE</b> ROOF CAP ELEMENT BY OTHERS   | <b>T1</b> ALUMINUM TRELLIS   | <b>GLAZING REQUIREMENTS:</b><br>U VALUE = 0.45<br>SHGC = 0.4  |
|  | <b>EQ</b> EQUAL  | <b>RE</b> CONTINUOUS RAIN GUTTERS AND DOWNSPOUTS AT BARREL VAULT ROOF C.G. TO COORDINATE THRU-WALL SLEEVE - SEE SECTIONS | <b>RG</b> CONTINUOUS RAIN GUTTERS AND DOWNSPOUTS AT THRU-WALL SLEEVE - SEE SECTIONS                            | <b>T2</b> TRELLIS TIE-BACK   |   |