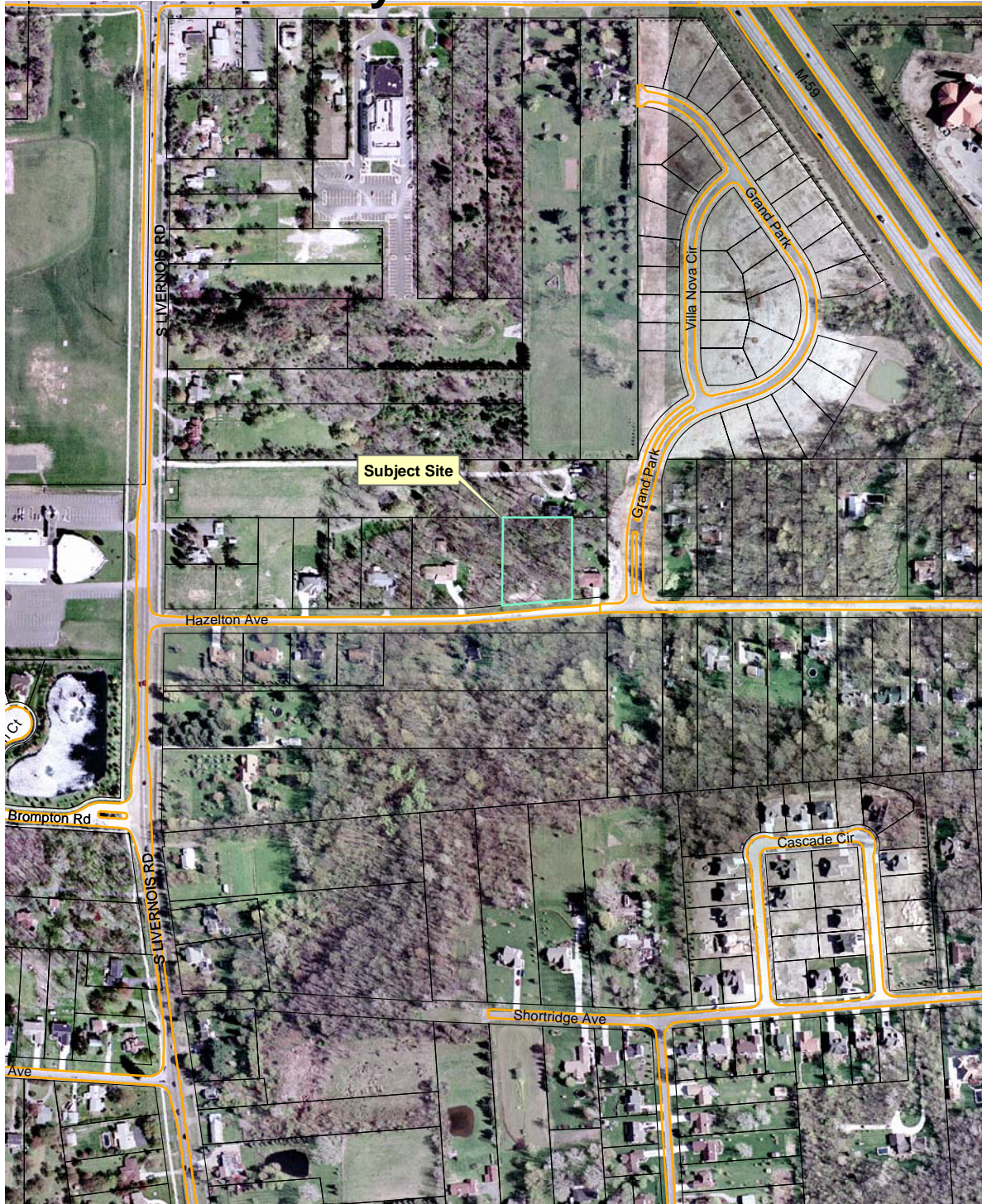


# Grace Oaks Site Condominiums (2-unit) City File No. 02-009



### Legend

TaxParcel

Aerial photographs as of April 2002.  
Parcel lines were obtained on 04-13-06 from Oakland County  
Although the information provided by this map is believed to  
be reliable, its accuracy is not warranted in any way. The City  
of Rochester Hills assumes no liability for any claims arising  
from the use of this map.

05/01/05

1"=300'