



Rochester Hills, Michigan

FormFab LLC
Norman Caetano
President
May 30, 2012
FormFab Business Update

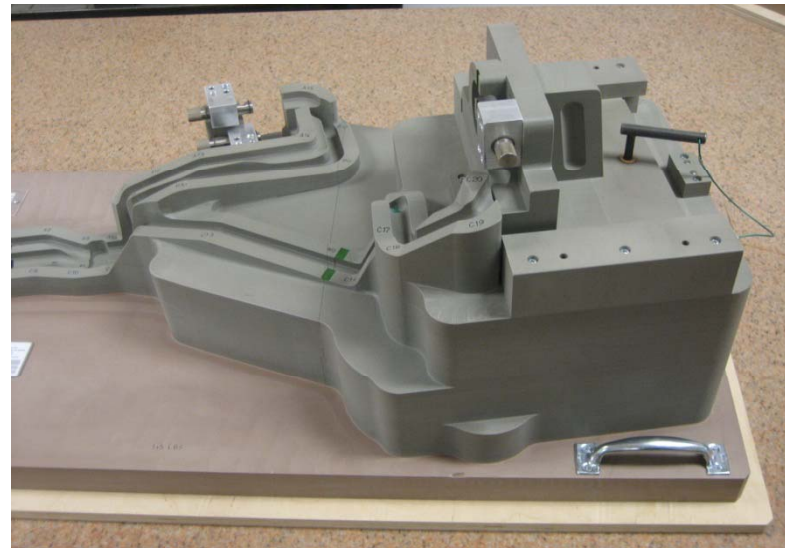


What we do:

We are a full service supplier for the tubing industry.

Our Services include:

- Inspection Fixtures





What we do:

- Tube Fabrication (Developmental & Short Run Pre-Production Support)

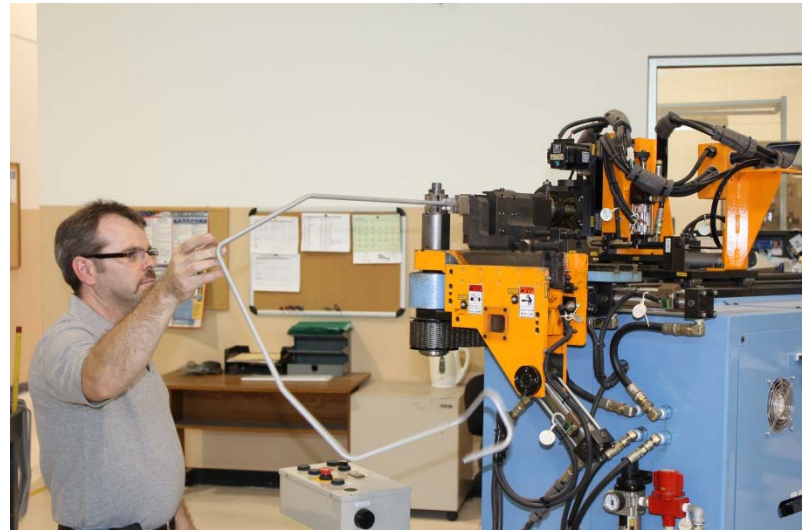




Endforming

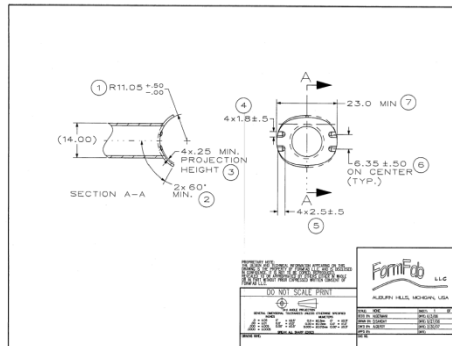


Bending



What we do:

- Endform Development (Design & Build)



- CMM Tube Layout Inspection





Other Services:

- Generation of Full Scale Tube Cad Layouts
- Component Fabrication (Brackets & Other Components)
- Production Feasibility Assessment
- Fluid Systems Engineering Design Consulting
- Reverse Engineering of Fluid Systems Routing and Components



Company History

- Company founded in November 1998
- January 1999 - Moved into a 1600 sq.ft. industrial unit in Auburn Hills
- Operation consisted of producing Tube Contour Inspection Fixtures for the Automotive Tubing Industry
- August 2000 - Expanded into a second unit with a square footage total of 3200 sq.ft. to begin fabrication of small diameter tubing prototypes for the Automotive Tubing Industry
- January 2003 - Company moves to a new stand alone 8800 sq.ft. facility located in Auburn Hills providing jobs for 6 full time employees
- June 2003 - Company purchases Machining Center to expand capabilities and provide full contour production gauges



- December 2005 - Company purchases an additional CNC tube bender to support increased order volumes
- Employment increased to 9 employees
- April 2006 - Company continues to expand it's product offerings with the acquisition of larger capacity CNC Tube Benders
- June 2006 – Company begins low volume production of HVAC assemblies for the aftermarket
- Employment increased to 14 by the end of 2006
- July 2007 – Company moves into a new 16,000 sq.ft. facility located in Rochester Hills Executive Park
- June 2009 – Company begins to see increased business activity due to economic turndown and fallout in the supplier base.



- March 2010 – New Director of Sales joins the organization
- June 2010 – FormFab introduces new logo and website at www.formfabllc.com
- April 2011 – FormFab is awarded first direct to OEM production job
- December 2011 – FormFab employment reaches 31 full time jobs



Future Development

- Continued expansion into low volume Aftermarket, Aerospace and Defense Industries
- Expansion of Inspection Fixture customer base
- Continued expansion into related products and services that compliment and offer value to our new and existing customers



New Equipment Expenditures

2007 thru 2010

3 Stroke Endforming Press	\$25,000.00	
5 Stroke Endforming Press	\$65,000.00	
Large Diameter CNC Tube Bender	\$30,000.00	
Crimp Presses	\$20,000.00	
Computer Hardware/Software	\$10,000.00+	
	Total	\$150,000.00

2011

CNC Lathe	\$35,000.00	
Small Diameter CNC Tube Bender	\$55,000.00	
6 Stroke Endforming Press	\$70,000.00	
Romer Arm Coordinate Measurement Machine	\$49,000.00	
Roller Groover	\$35,000.00	
Computer Hardware/Software	\$10,000.00+	
	Total	\$254,000.00

2012

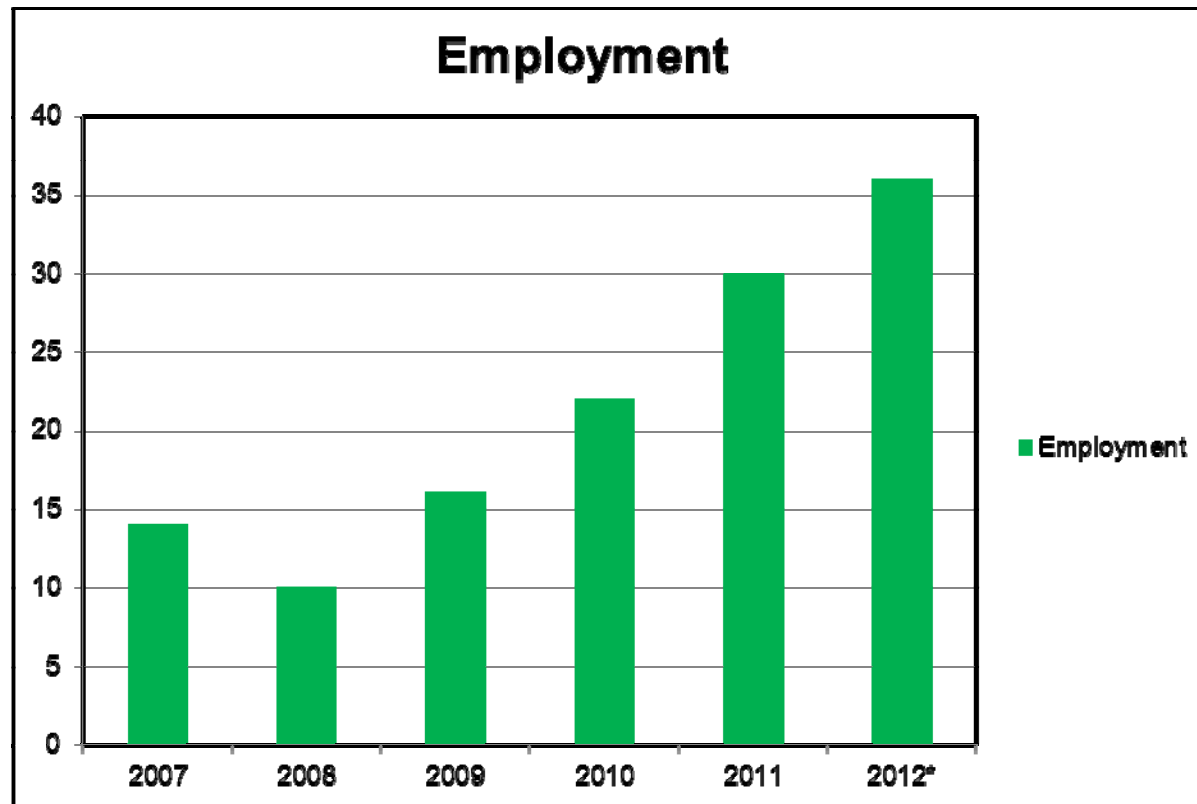
8 Stack CNC Bender	\$105,000.00	
Dedicated Part Bender	\$22,000.00	
Pattern CNC Laser Engraver/Plotter*	\$50,000.00	
CNC Mill*	\$45,000.00	
	Total	\$222,000.00

Total Expenditures/Commitment: \$626,000.00

*2012 Budgeted Expenditures



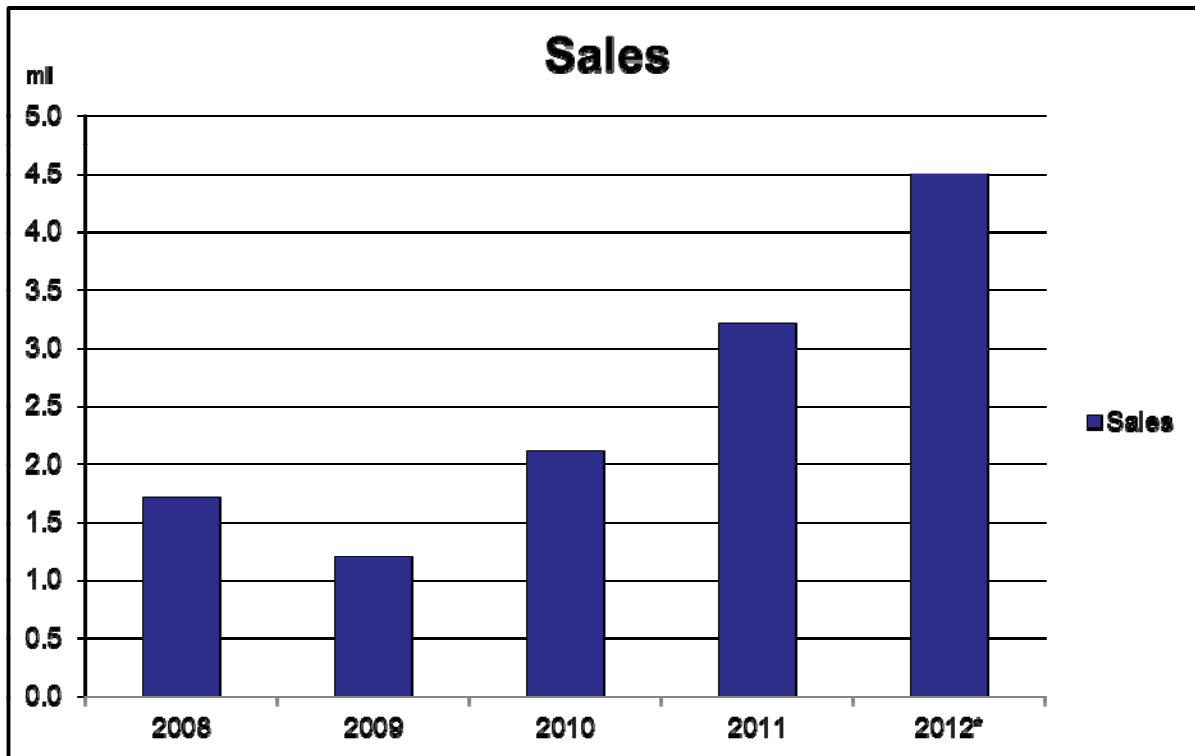
Human Resources



*Projected



Sales



* Projected



Thanks to Rochester Hills for all your support!