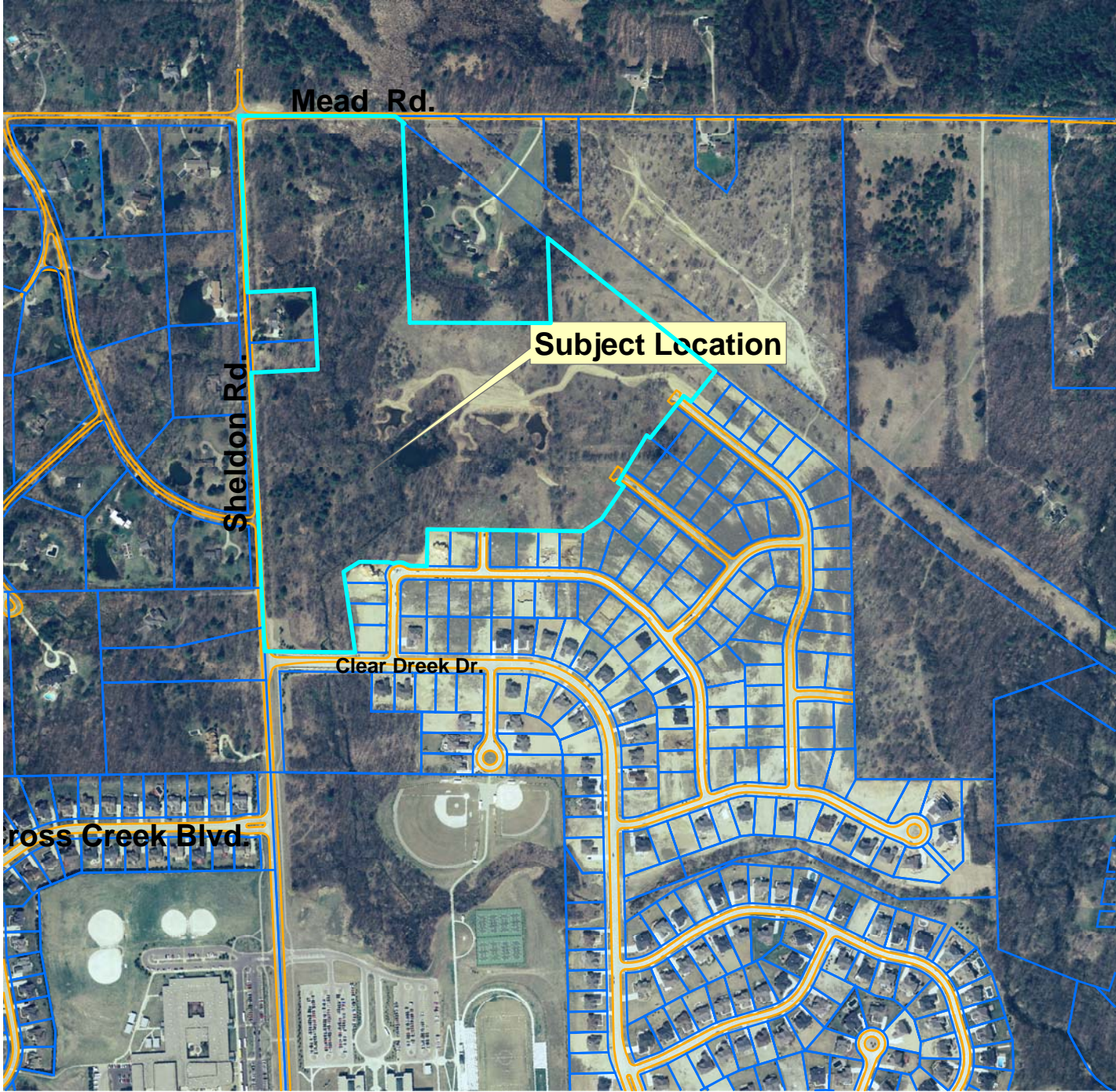


# Clear Creek Subdivision No. 5

## City File No. 89-156.5



### Legend

-  TaxParcel
-  RoadEdge

Aerial photographs as of April 2005  
Parcel lines were obtained on 01-02-08 from Oakland County  
Although the information provided by this map is believed to be reliable, its accuracy is not warranted in any way. The City of Rochester Hills assumes no liability for any claims arising from the use of this map.

08-08-07

1 inch equals 657 feet