



KOSTAL Kontakt Systeme, Inc.

KOSTAL Industrial Electronics, Inc.

The KOSTAL Group is a family-owned company, carrying out business worldwide

KOSTAL – Key Facts

- 1912 sees the founding of the parent company in Lüdenscheid by Leopold Kostal – logo LK (see below)
- 1927 LK designs and produces its first parts for the automotive industry
- 1973 marks the beginning of business activities in the first foreign subsidiary (Mexico)
- 2009
 - Revenues: ~1,075 bn EUR
 - Employees: ~10,612 (71% abroad)
 - 26 sites in 17 countries on four continents



KOSTAL – Business Units



- Automotive Electrical Systems



- Connectors
(KOSTAL Kontakt Systeme GmbH)



- Industrial Electronics
(KOSTAL Industrie Elektrik GmbH)



- SOMA Test Systems
(SOMA GmbH)



We offer to our customers a global performance combined with the flexibility and commitment of a family-run and owned medium-sized company.

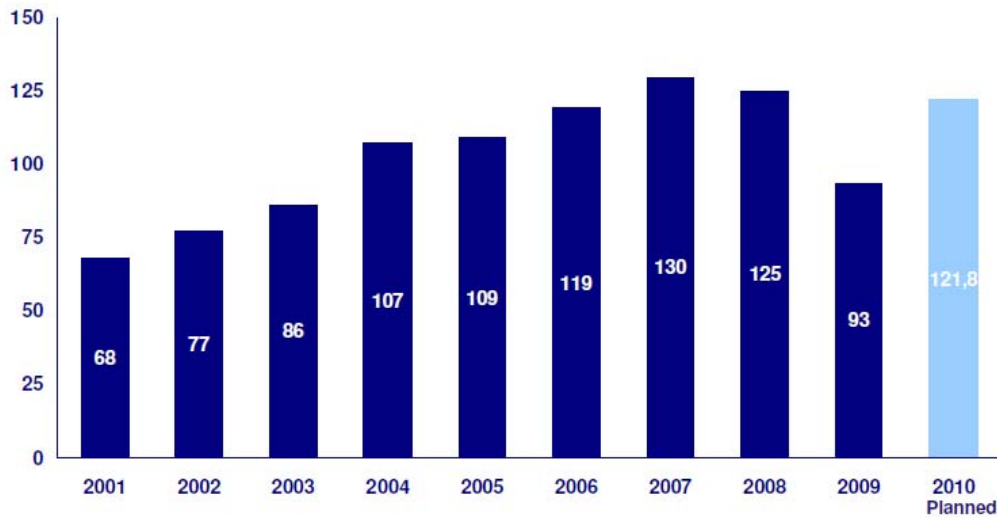


Our commitment to performance is guaranteed by our name „Kostal“.

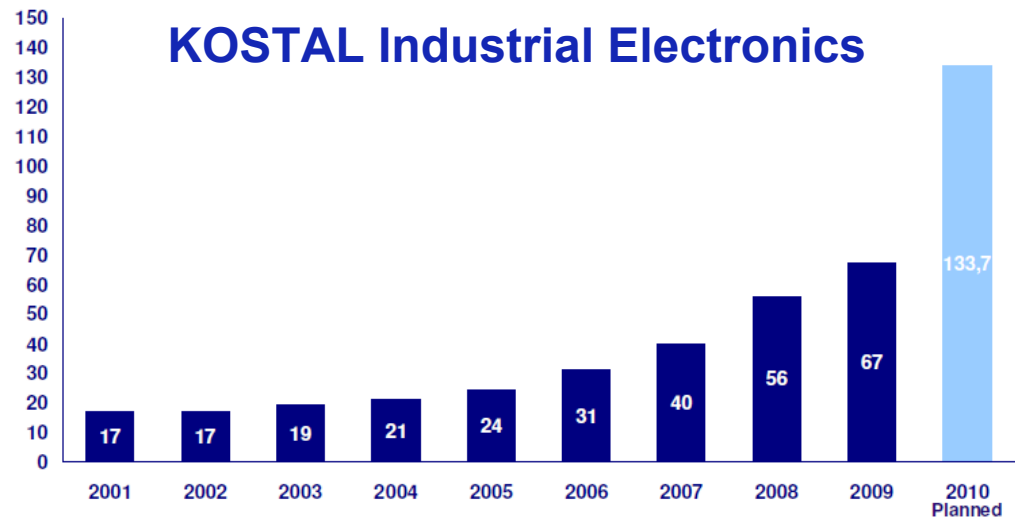


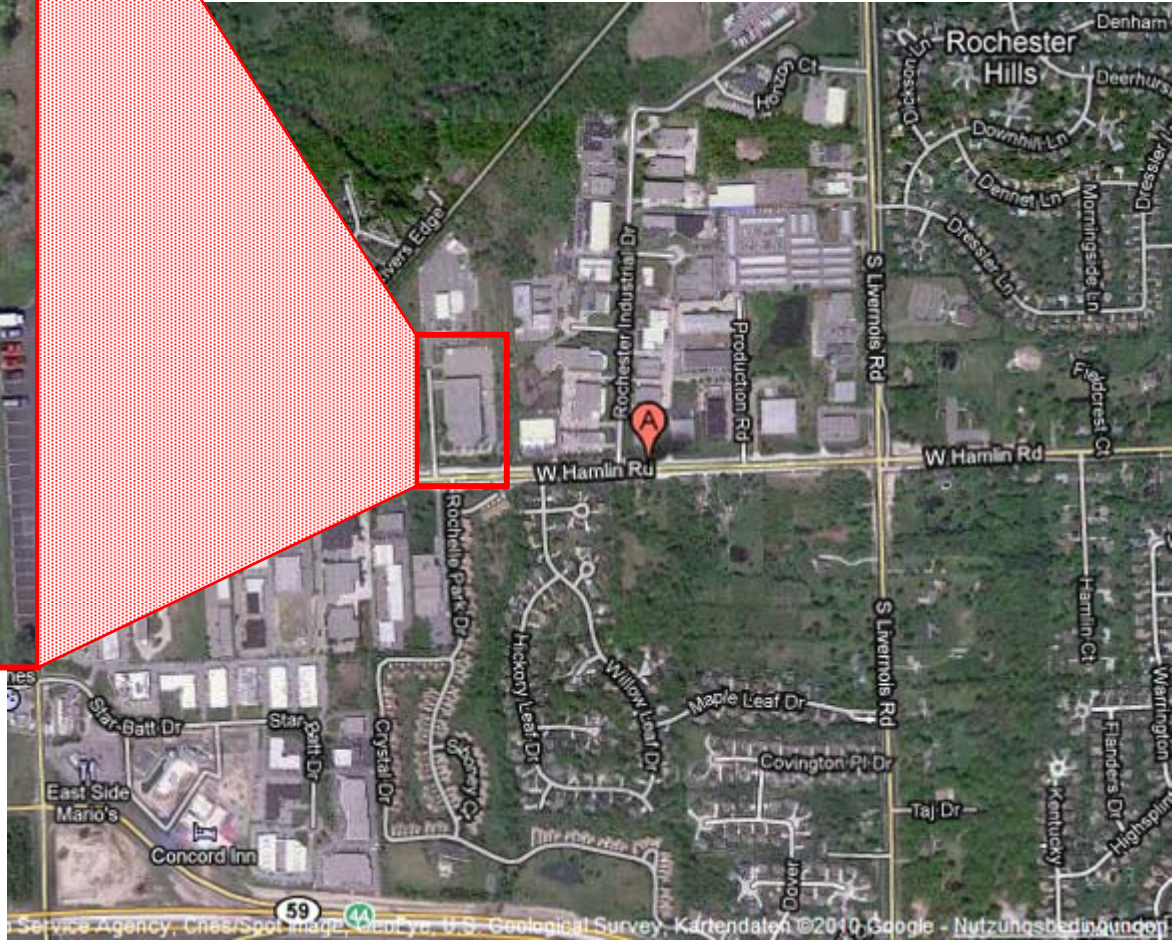
The „KOSTAL DNA“:
Our levelling rule
against which we are measured.

KOSTAL Kontakt Systeme



KOSTAL Industrial Electronics





Lobby



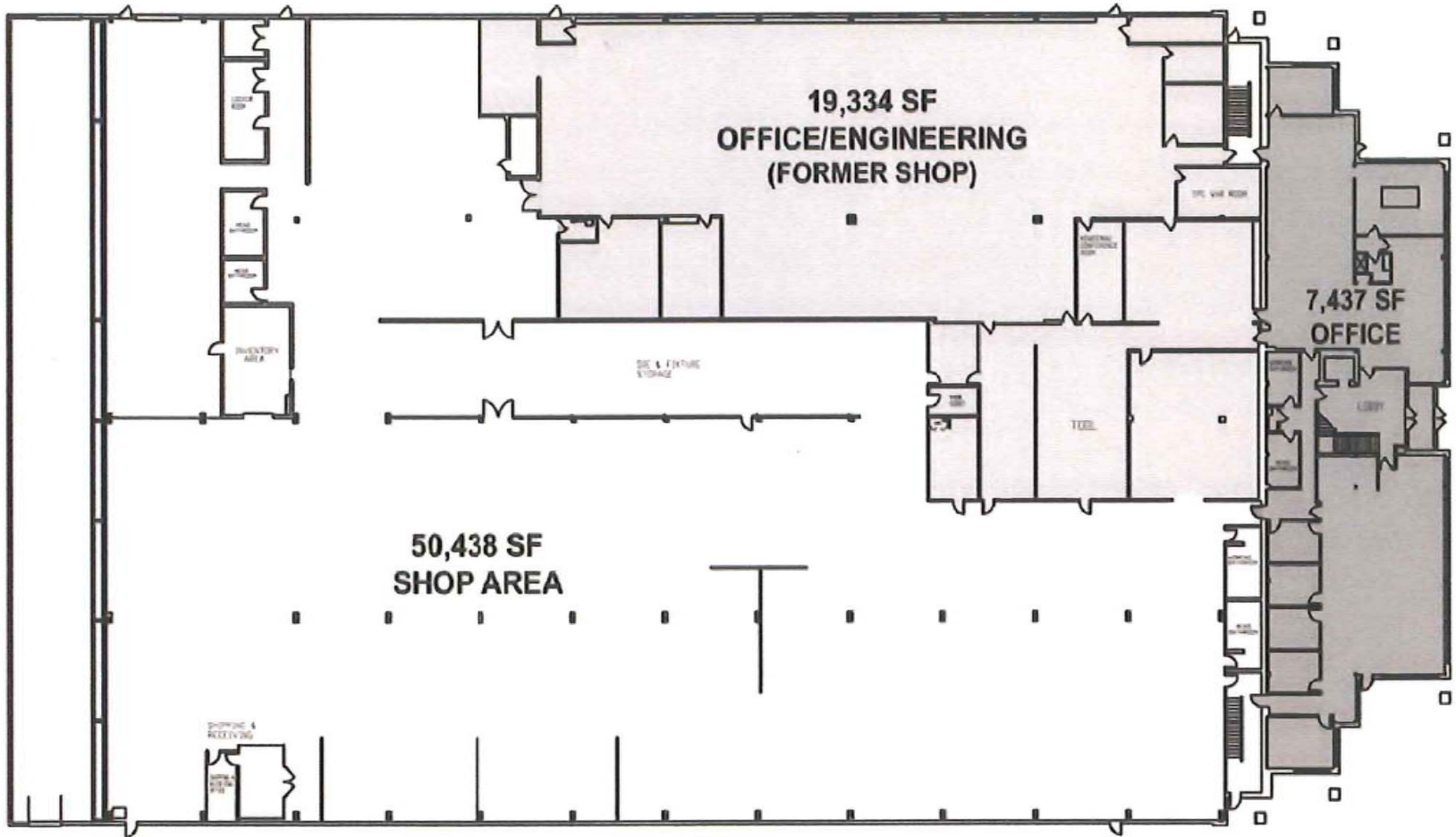
Offices



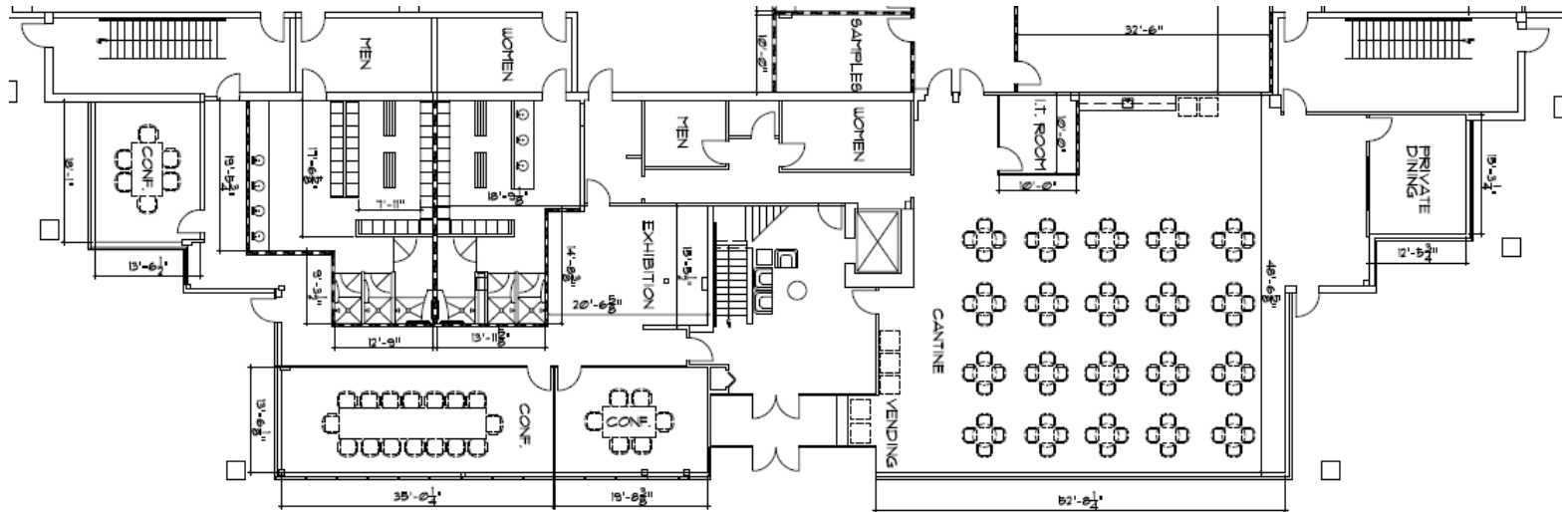
Manufacturing Area



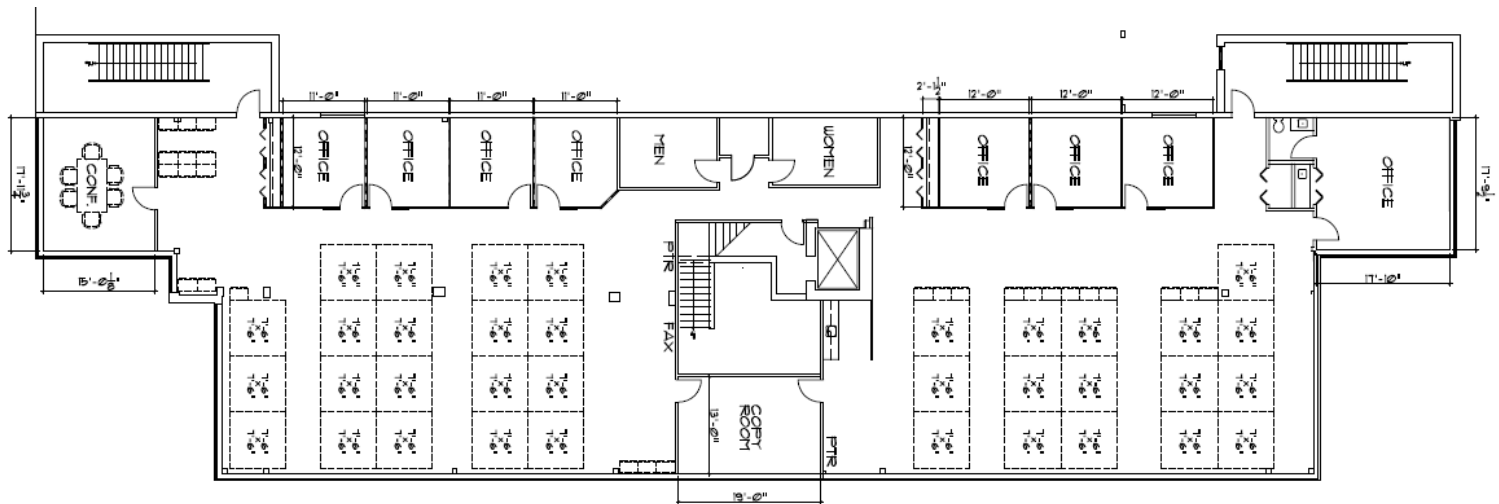
Current Layout



Potential Office Layout 1st Floor



Potential Office Layout 2nd Floor



Potential Manufacturing Layout

**Thank you very much
for your attention!**

