

The Highland Room

Conditional Use – PCU2025-0005

CITY OF ROCHESTER HILLS
PLANNING COMMISSION
OCTOBER 21, 2025

The Highland Room

Conditional Use – PCU2025-0005



The Highland Room

Conditional Use – PCU2025-0005



The Highland Room

PCU2025-0005

Conditional use for the ancillary sales of alcoholic beverages onsite for onsite consumption.

	Zoning	Existing Land Use	Future Land Use
Site	BD Brooklands District	Newly constructed mixed use building (commercial and residential units)	Commercial Residential Flex 2
North (across Auburn Rd.)	BD Brooklands District	Gas station	Commercial Residential Flex 2
South (across alley)	R-4 One Family Residential District	Single family residential homes and a City parking lot	Residential 4
East (across Gerald Ave.)	BD Brooklands District	Multi-tenant commercial building including a Greek restaurant, a salon, an insurance agent	Commercial Residential Flex 2
West	BD Brooklands District	Marcoin Business Services	Commercial Residential Flex 2

The Highland Room

PCU2025-0005

Conditional use for the ancillary sales of alcoholic beverages onsite for onsite consumption.

Overall Site – Approx. 0.5 acres
Mixed Use Building
The proposed use represents the first potential tenant in the building.

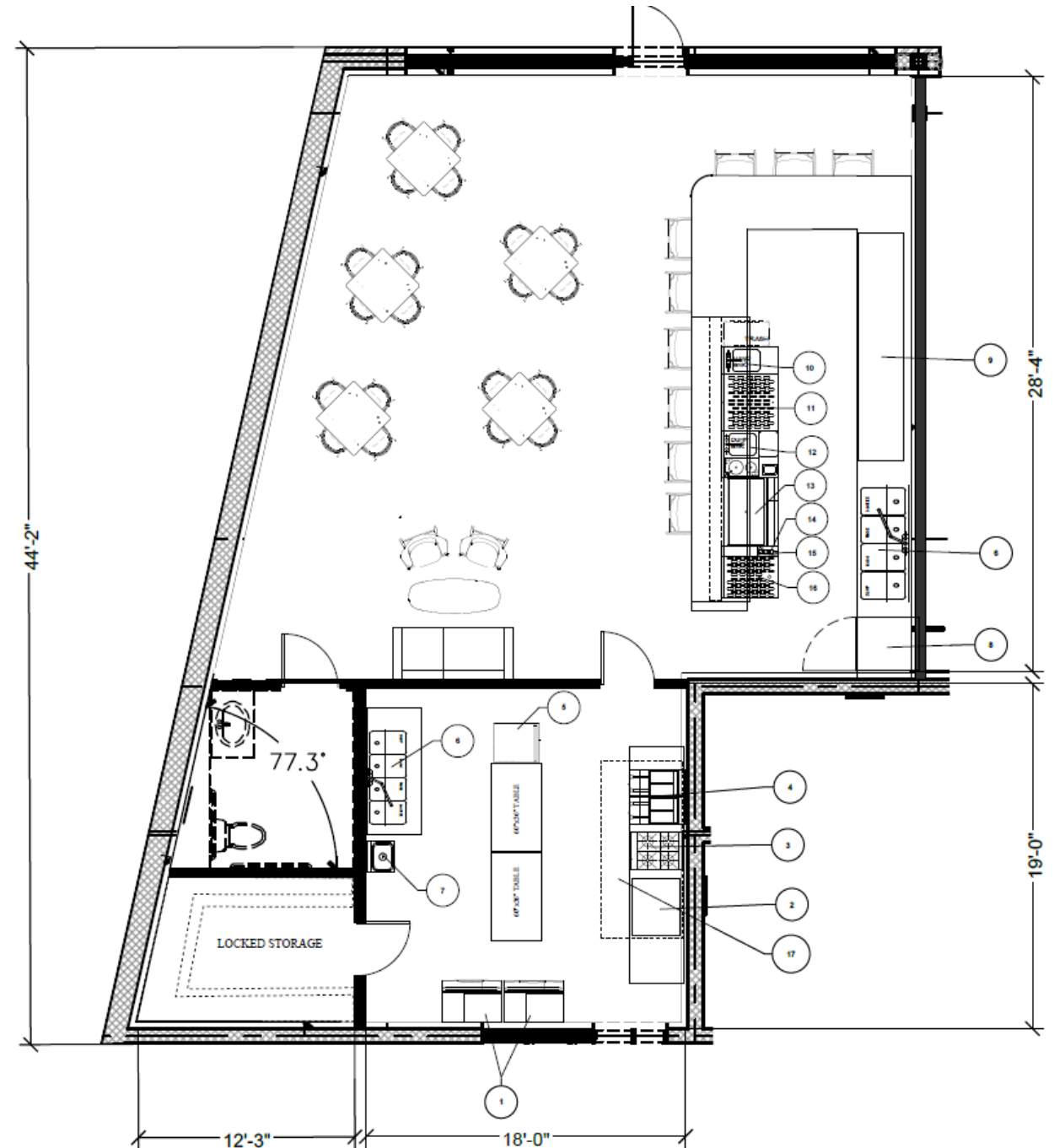
Hours of Operation –
8:00 a.m. -11:00 p.m.

Tenant Space Size –
Approx. 1,260 sq. ft.

Seating –
Approx. 33 persons

Parking –
Parking in the Brooklands is based on a residential vs. nonresidential calculation. Parking for nonresidential use is provided on street and in City lot.

EQUIPMENT SCHEDULE	
1	CLOCK
2	GRILL
3	OVEN/TOASTER
4	POT
5	SOFT ICE CREAM MACHINE
6	SHRIMP FRYER
7	STOVE
8	WALLS ON REFRIGERATOR
9	BACK BAR COUNTER
10	BAR HANDS
11	UNDERBAR DRINKBOARD
12	CUPBOARD
13	UNDERBAR ICE BIN
14	WALL CUPBOARD
15	WALL CUP
16	UNDERBAR DRINKBOARD
17	WALL CUPBOARD SYSTEM



The Highland Room

PCU2025-0005

Conditional use for the ancillary sales of alcoholic beverages onsite for onsite consumption.

Overall Site – Approx. 0.5 acres
Mixed Use Building
The proposed use represents the first potential tenant in the building.

Hours of Operation –
8:00 a.m. -11:00 p.m.

Tenant Space Size –
Approx. 1,260 sq. ft.

Seating –
Approx. 33 persons

Parking –
Parking in the Brooklands is based on a residential vs. nonresidential calculation. Parking for nonresidential use is provided on street and in City lot.



The Highland Room

PCU2025-0005

Conditional use for the ancillary sales of alcoholic beverages onsite for onsite consumption.

Overall Site – Approx. 0.5 acres
Mixed Use Building
The proposed use represents the first potential tenant in the building.

Hours of Operation –
8:00 a.m. -11:00 p.m.

Tenant Space Size –
Approx. 1,260 sq. ft.

Seating –
Approx. 33 persons

Parking –
Parking in the Brooklands is based on a residential vs. nonresidential calculation. Parking for nonresidential use is provided on street and in City lot.



The Highland Room

PCU2025-0005

Conditional use for the ancillary sales of alcoholic beverages onsite for onsite consumption.

Overall Site – Approx. 0.5 acres
Mixed Use Building
The proposed use represents the first potential tenant in the building.

Hours of Operation –
8:00 a.m. -11:00 p.m.

Tenant Space Size –
Approx. 1,260 sq. ft.

Seating –
Approx. 33 persons

Parking –
Parking in the Brooklands is based on a residential vs. nonresidential calculation. Parking for nonresidential use is provided on street and in City lot.

Review Standards

- *Will promote the intent and purpose of (the Ordinance).*
- *Will be designed, constructed, operated, maintained, and managed so as to be compatible, harmonious, and appropriate in appearance with the existing or planned character of the general vicinity, adjacent uses of land, the natural environment, the capacity of public services and facilities affected by the land use and the community as a whole.*
- *Will be served adequately by essential public facilities and services, such as highways, streets, police and fire protection, drainage ways, refuse disposal, or that the persons or agencies responsible for the establishment of the land use or activity shall be able to provide adequately any such service.*
- *Will not be detrimental, hazardous, or disturbing to existing or future neighboring land uses, persons, property, or the public welfare.*
- *Will not create additional requirements at public cost for public facilities and services that will be detrimental to the economic welfare of the community.*