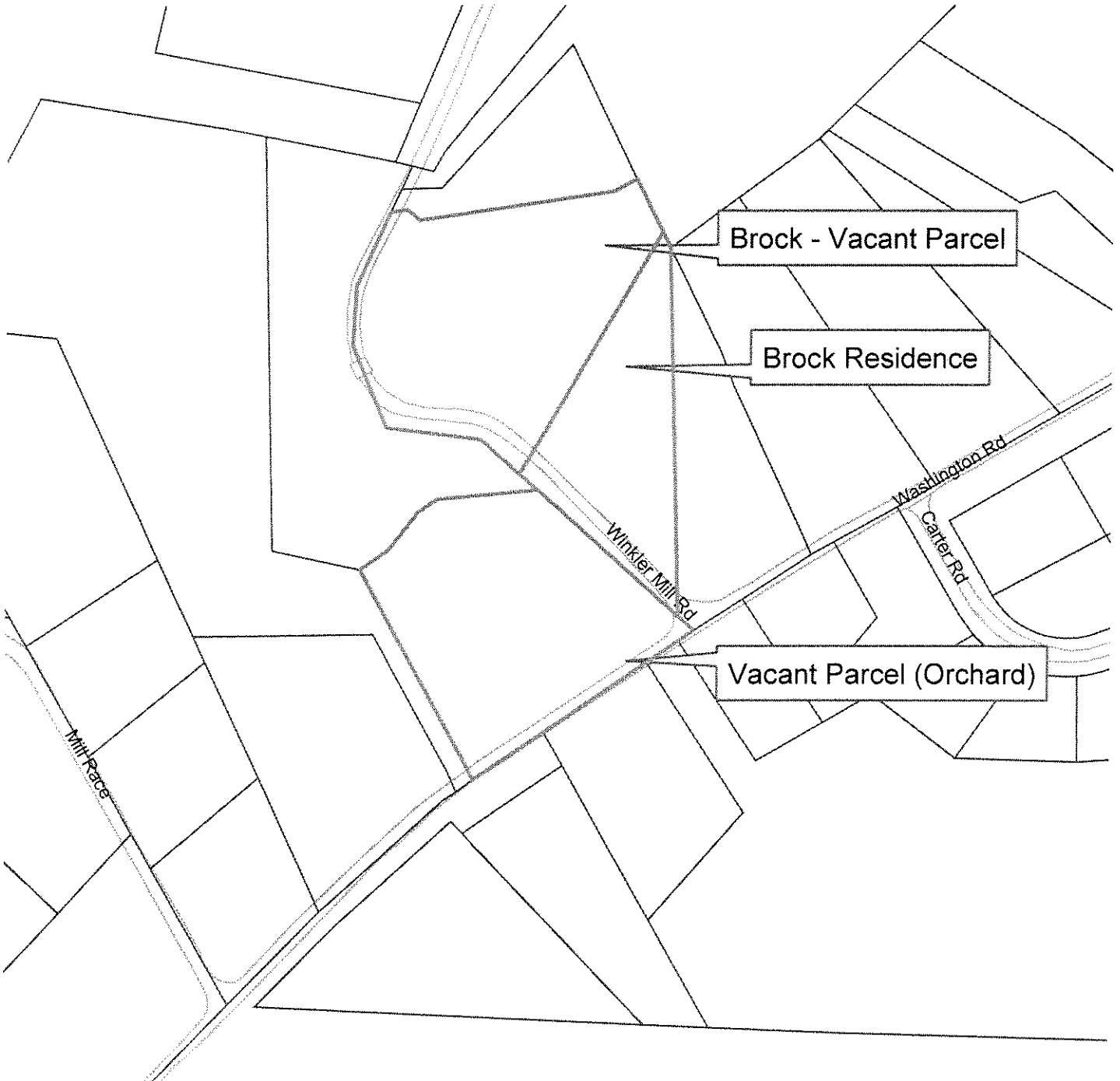
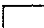



Winkler Mill Parcels



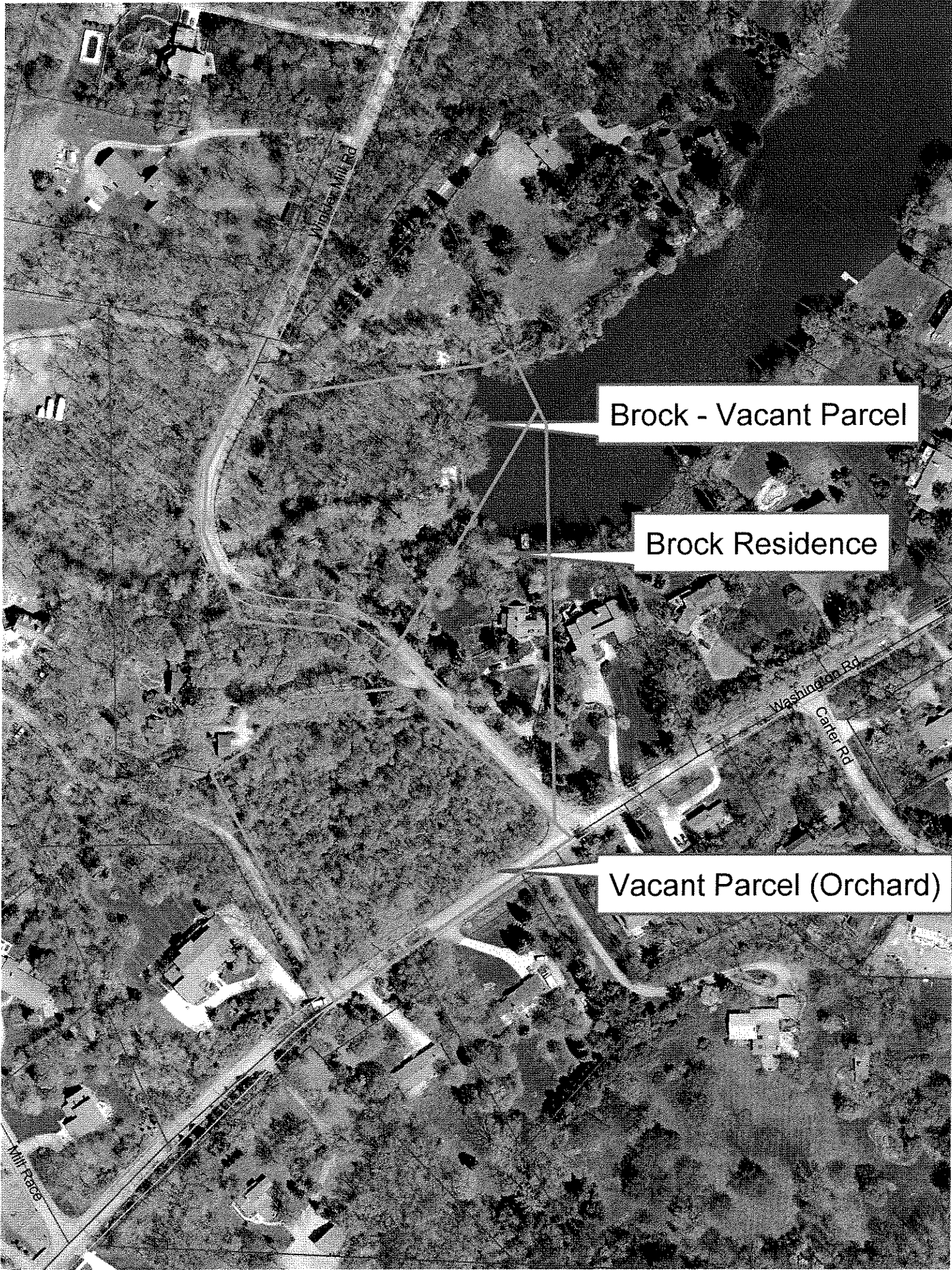
Legend

-  TaxParcel
-  RoadEdge

Aerial photographs as of April 2005.
Parcel lines were obtained on 04-01-08 from Oakland County.
Although the information provided by this map is believed to be reliable, its accuracy is not warranted in any way. The City of Rochester/ Hills assumes no liability for any claims arising from the use of this map.

06-05-08

1 inch equals 234 feet



Brock - Vacant Parcel

Brock Residence

Vacant Parcel (Orchard)