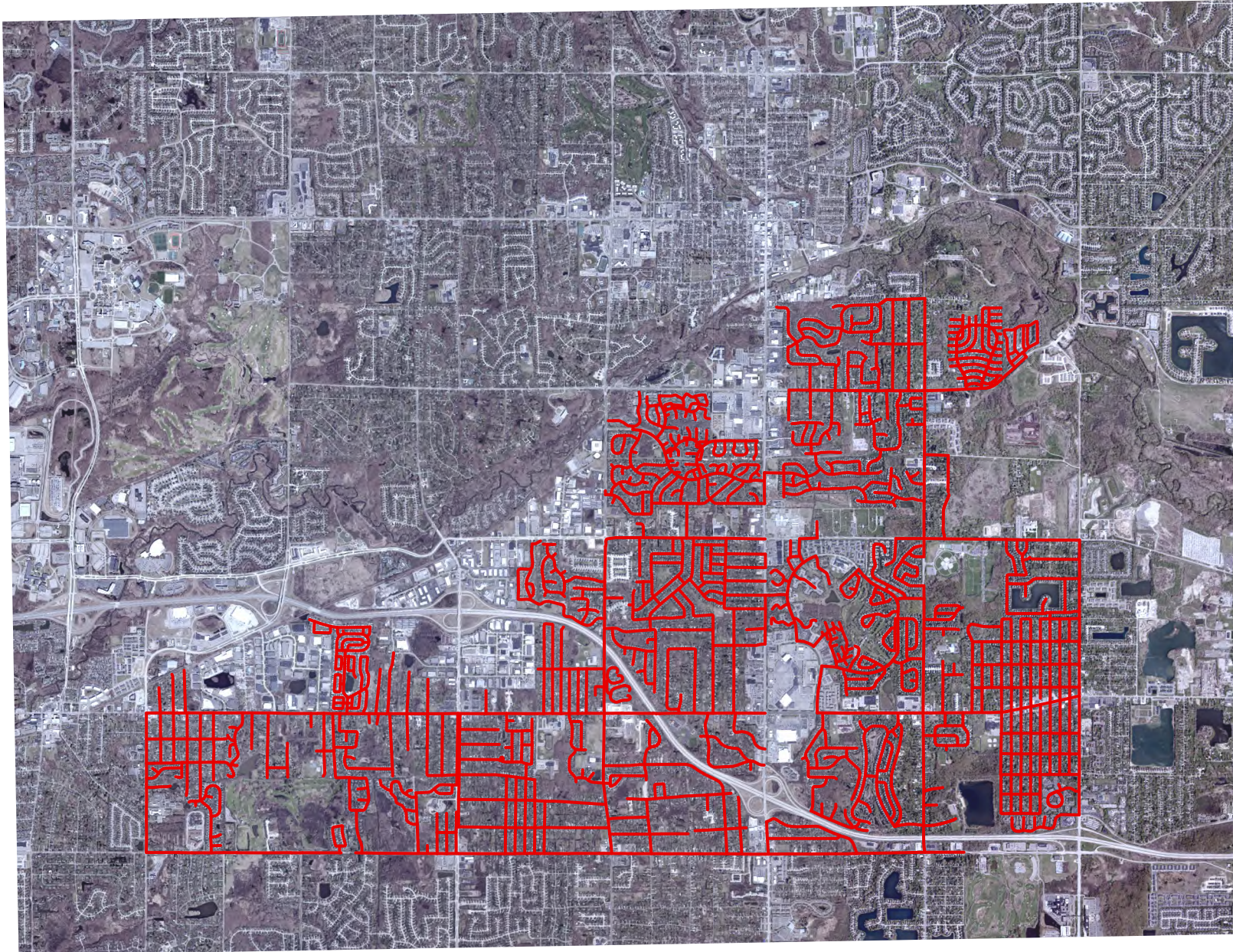


RIPPLE FIBER INITIAL INSTALLATION AREAS



**This map is for reference only-
Not intended to replace Miss Dig-
Call 811 72 hours in advance for stakeout**

0 3,750 7,500 15,000 Feet

Although the information provided by this map is believed to be reliable, its accuracy is not warranted in any way. The City of Rochester Hills assumes no liability for any claims arising from the use of this map.

