

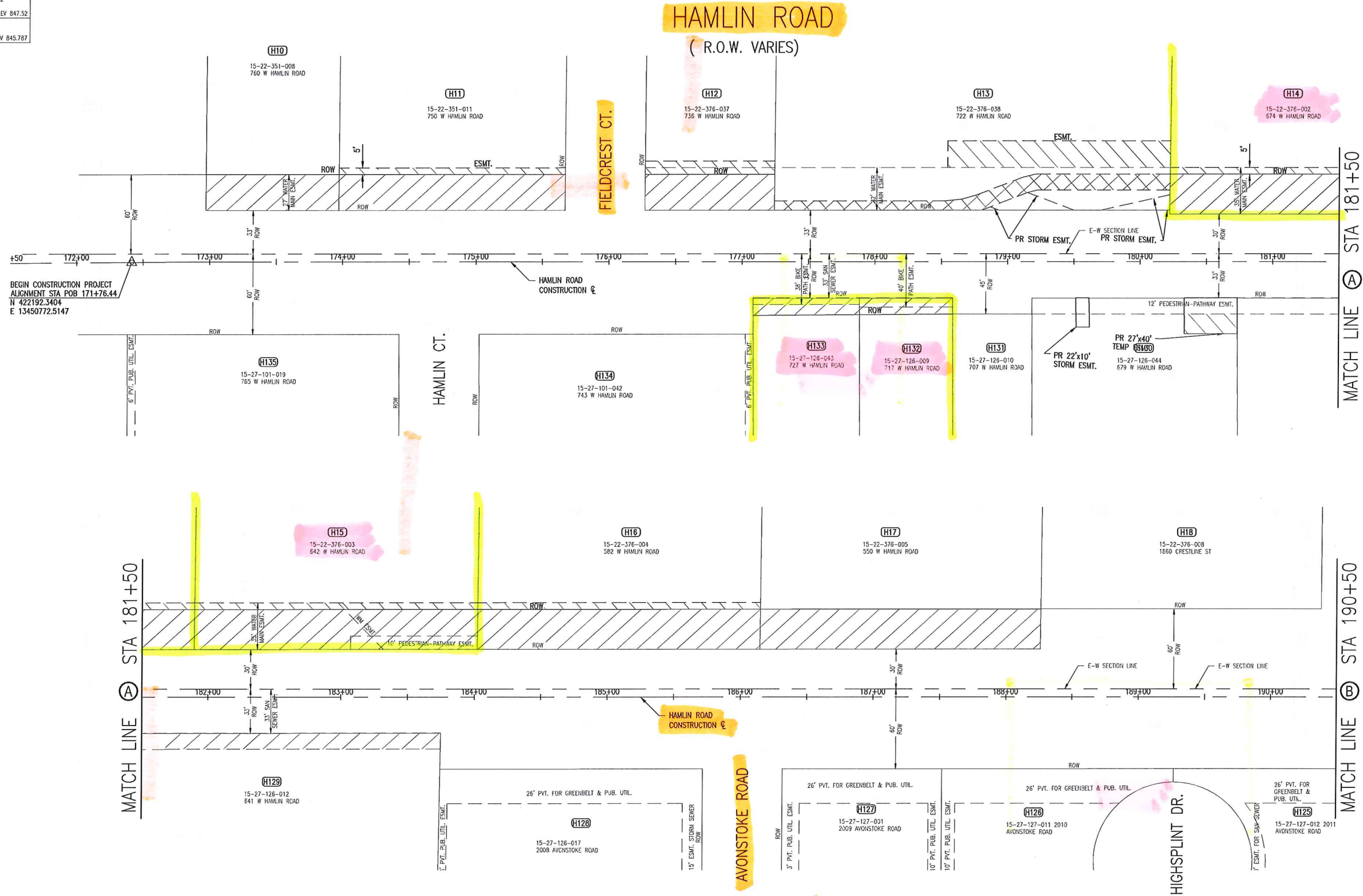
| |
|----------------------------|
| BENCHMARK #200 |
| N 42220.82 |
| E 13450669.82 ELEV 845.271 |
| TRAVERSE POINT #100 |
| N 422234.78 |
| E 13450775.60 ELEV 844.89 |
| TRAVERSE POINT #101 |
| N 422213.06 |
| E 13451599.58 ELEV 857.02 |
| BENCHMARK #201 |
| N 422222.72 |
| E 13451672.28 ELEV 856.959 |
| TRAVERSE POINT #102 |
| N 42245.55 |
| E 13452405.42 ELEV 847.52 |
| BENCHMARK #202 |
| N 422238.55 |
| E 13452514.50 ELEV 845.787 |

DRAWING PATH: P:\4000_4100_Livonia\10190130010_Hamlin_Rd_Phase_1\Drawings\Misc\10010ROW1.dwg Oct 17, 2014 - 2:05pm

LEGEND

| | |
|--|-------------------------------------|
| | PROPOSED HIGHWAY EASEMENT |
| | PROPOSED TEMPORARY GRADING EASEMENT |
| | PROPOSED PERMANENT PATHWAY EASEMENT |

NOTE: SEE CONSTRUCTION SHEETS FOR STATIONS OF ROW LIMITS.

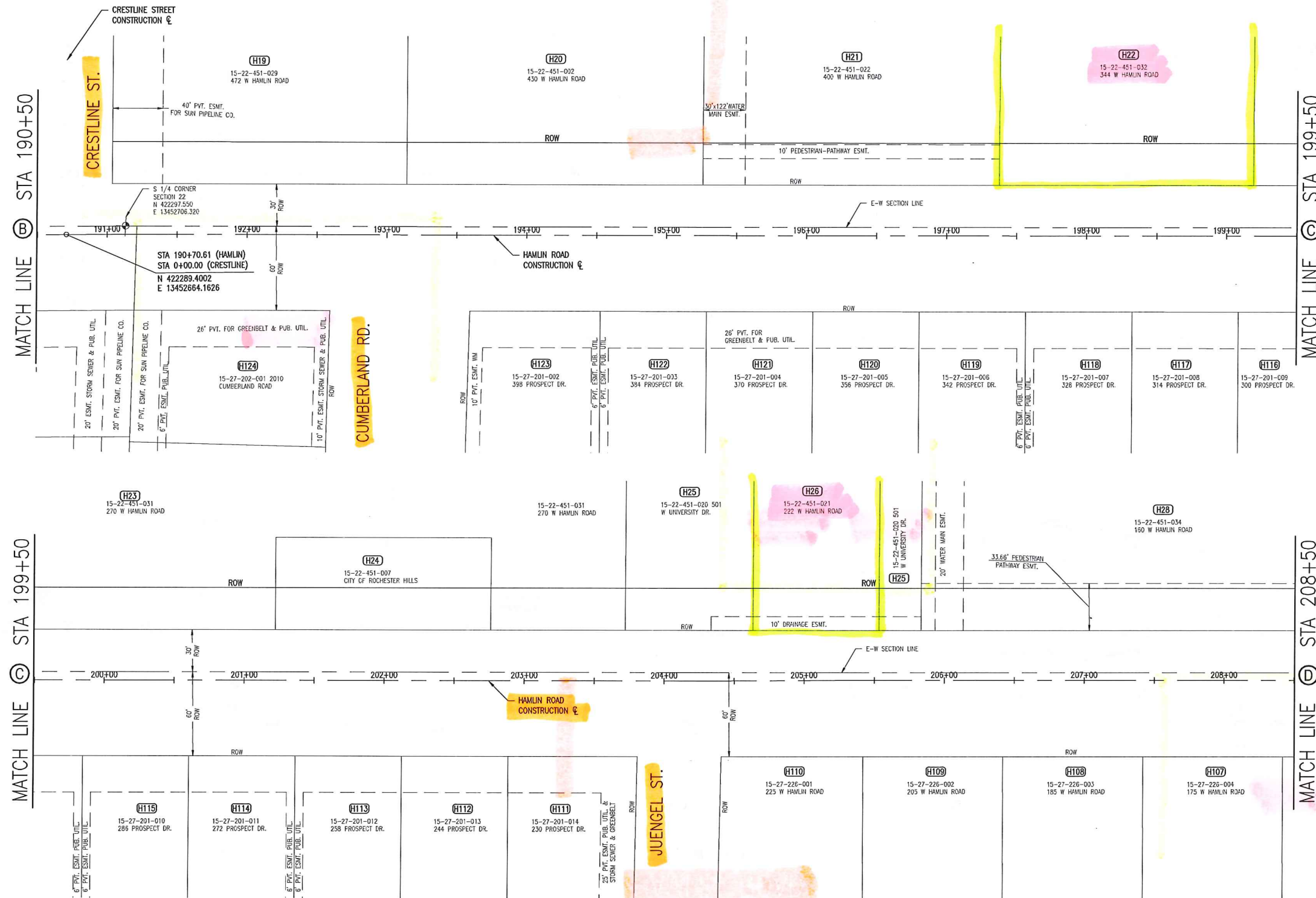


| | | | | | |
|--|--|----------------|---|----------|-------------------------|
| | | SCALE: | H: 1"=40' | V: N/A | VERT. DATA VALUE: |
| | | CITY/TOWNSHIP: | CITY OF ROCHESTER HILLS | COUNTY: | OAKLAND COUNTY |
| CITY OF ROCHESTER HILLS REVISIONS: | | PROJECT: | 34000 Plymouth Road Livonia, MI 48150 P (734) 522-6711 F (734) 522-6427 | CLIENT: | CITY OF ROCHESTER HILLS |
| | | DATE: | 2014 | SECTION: | 22-27 |
| HAMLIN ROAD REHABILITATION ROW VICINITY MAP STA. POB 171+76.44 TO STA. 190+50 | | DATE: | 10/17/2014 | SECTION: | 22-27 |
| SHEET 12 OF 111 | | DATE: | 10/17/2014 | SECTION: | 22-27 |
| WWW.OHM-ADVISORS.COM | | DATE: | 10/17/2014 | SECTION: | 22-27 |

HAMLIN ROAD (90' R.O.W.)



| |
|---|
| BENCHMARK #202 N 422238.55 E 13452514.50 ELEV 845.787 |
| TRAVERSE POINT #103 N 422345.77 E 13453238.58 ELEV 835.85 |
| BENCHMARK #203 N 422278.74 E 13452989.53 ELEV 841.679 |
| BENCHMARK #204 N 422301.46 E 13453976.57 ELEV 822.740 |
| TRAVERSE POINT #104 N 422307.92 E 13453877.76 ELEV 824.75 |
| BENCHMARK #205 N 422326.25 E 13454633.06 ELEV 810.227 |



MATCH LINE (B) STA 190+50

MATCH LINE (C) STA 199+50

MATCH LINE (C) STA 199+50

MATCH LINE (D) STA 208+50

LEGEND

| | |
|--|-------------------------------------|
| | PROPOSED HIGHWAY EASEMENT |
| | PROPOSED TEMPORARY GRADING EASEMENT |
| | PROPOSED PERMANENT PATHWAY EASEMENT |

NOTE: SEE CONSTRUCTION SHEETS FOR STATIONS OF ROW LIMITS.

DRAWING PATH: P:\4000_4100_Livonia\0190130010_Hamlin_Rd_Phase_1\dwg\Misc\130010ROW1.dwg Oct 17, 2014 - 2:06pm



| | | | | | | | | | | |
|------|------|----------|---------|---------|-------|--------------|----------------|-------------------------|--------------|----------|
| DATE | CADD | ENG/ARCH | PROJ/GR | SECTION | TOWN | RANGE | COUNTY | CITY/TOWNSHIP | SCALE | VERTICAL |
| | | | | 22-27 | 22-27 | T.3N. R.11E. | OAKLAND COUNTY | CITY OF ROCHESTER HILLS | H: 1"=40' | Value |
| | | | | | | | | | V: N/A | Value |
| | | | | | | | | | JOB # | |
| | | | | | | | | | 0190-13-0010 | |
| | | | | | | | | | | |
| | | | | | | | | | | |

**HAMLIN ROAD
REHABILITATION
ROW VICINITY MAP
STA. 190+50 TO STA. 208+50**

SHEET
13
 OF 111



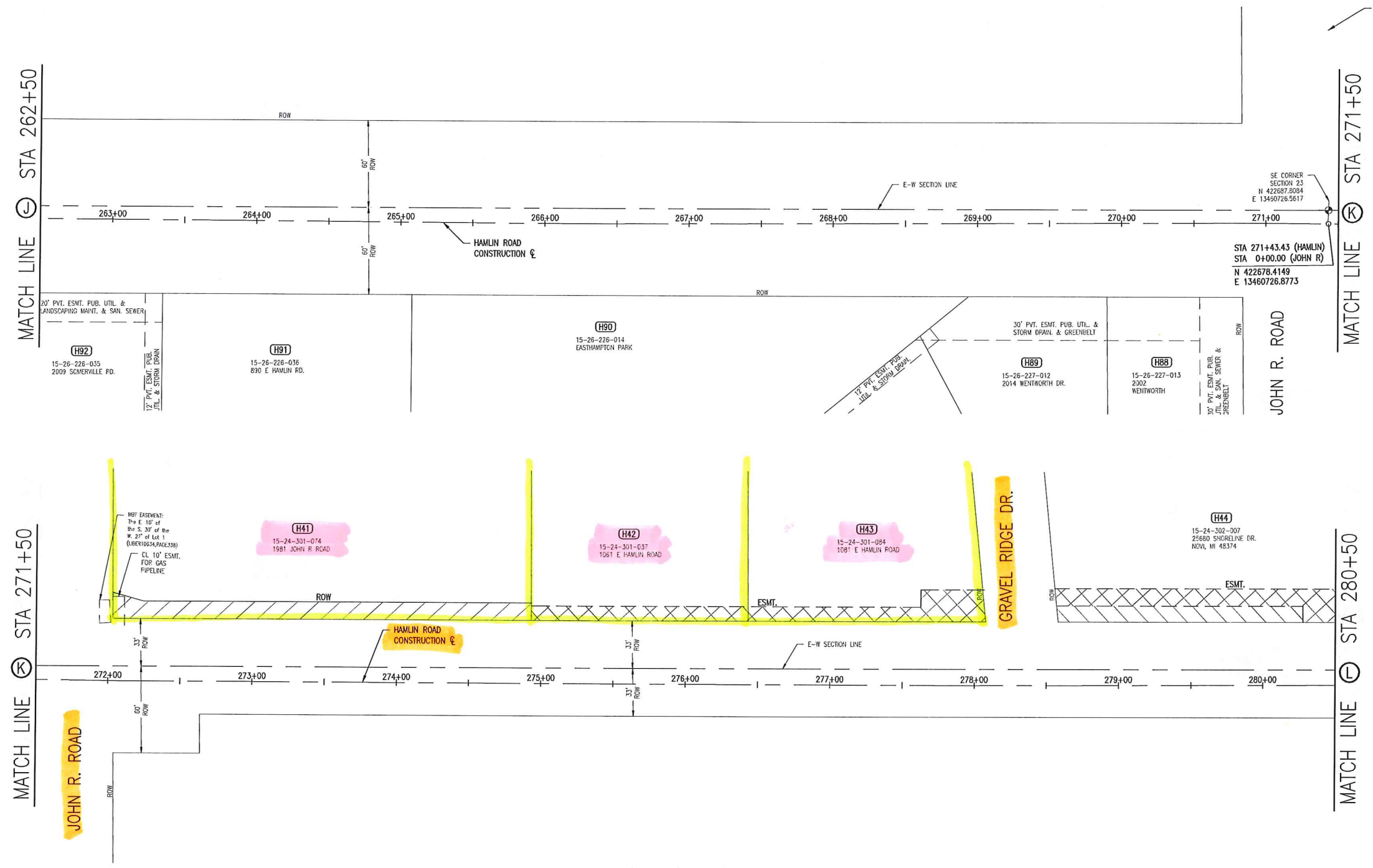
WWW.OHM-ADVISORS.COM
 34000 Plymouth Road | Livonia, MI 48150 | P (734) 522-6711 | F (734) 522-6427
 COPYRIGHT 2017 OHM ALL DRAWINGS AND WRITTEN MATERIALS APPEARING HEREIN CONSTITUTE THE ORIGINAL AND UNPUBLISHED WORK OF OHM AND THE SAME MAY NOT BE DUPLICATED, DISTRIBUTED, OR DISCLOSED WITHOUT PRIOR WRITTEN CONSENT OF OHM

HAMLIN ROAD

(R.O.W. VARIES)



| |
|---|
| BENCHMARK #210 N 422493.73 E 13460683.05 ELEV 742.568 |
| TRAVERSE POINT #110 N 422632.95 E 13460679.39 ELEV 739.59 |
| TRAVERSE POINT #111 N 422648.80 E 13461261.09 ELEV 744.17 |
| BENCHMARK #211 N 422659.20 E 13461420.47 ELEV 742.702 |



MATCH LINE Ⓞ STA 262+50

MATCH LINE Ⓞ STA 271+50

MATCH LINE Ⓞ STA 271+50

MATCH LINE Ⓞ STA 280+50

JOHN R ROAD CONSTRUCTION €

STA 271+43.43 (HAMLIN)
STA 0+00.00 (JOHN R)
N 422678.4149
E 13460726.8773

JOHN R. ROAD

GRAVEL RIDGE DR.

LEGEND

| | |
|--|-------------------------------------|
| | PROPOSED HIGHWAY EASEMENT |
| | PROPOSED TEMPORARY GRADING EASEMENT |
| | PROPOSED PERMANENT PATHWAY EASEMENT |

NOTE: SEE CONSTRUCTION SHEETS FOR STATIONS OF ROW LIMITS.

| | | | | | | | | | | | |
|---|------|----------|--------|---------|--------|-------|----------------|-------------------------|-----------|------------|------------------|
| DATE | CADD | ENG/ARCH | PROJGR | SECTION | TOWN | RANGE | COUNTY | CITY/VILLAGE/TOWNSHIP | SCALE | VERT DATUM | VERT DATUM VALUE |
| | KB | ES | ML | 22-27 | R.11E. | T.3N. | OAKLAND COUNTY | CITY OF ROCHESTER HILLS | H: 1"=40' | N/A | |
| REVISIONS | | | | | | | | | | | |
| CITY OF ROCHESTER HILLS | | | | | | | | | | | |
| JOB # 0190-13-0010 | | | | | | | | | | | |
| WWW.OHM-ADVISORS.COM | | | | | | | | | | | |
| 34000 Plymouth Road Livonia, MI 48150 P. (734) 522-6711 F. (734) 522-6427 | | | | | | | | | | | |
| COPYRIGHT 2012 OHM ALL DRAWINGS AND WRITTEN MATERIALS APPEARING HEREIN CONSTITUTE THE ORIGINAL AND UNPUBLISHED WORK OF OHM AND THE SAME MAY NOT BE DUPLICATED, DISTRIBUTED, OR DISCLOSED WITHOUT PRIOR WRITTEN CONSENT OF OHM | | | | | | | | | | | |

HAMLIN ROAD
REHABILITATION
ROW VICINITY MAP
STA. 262+50 TO STA. 280+50

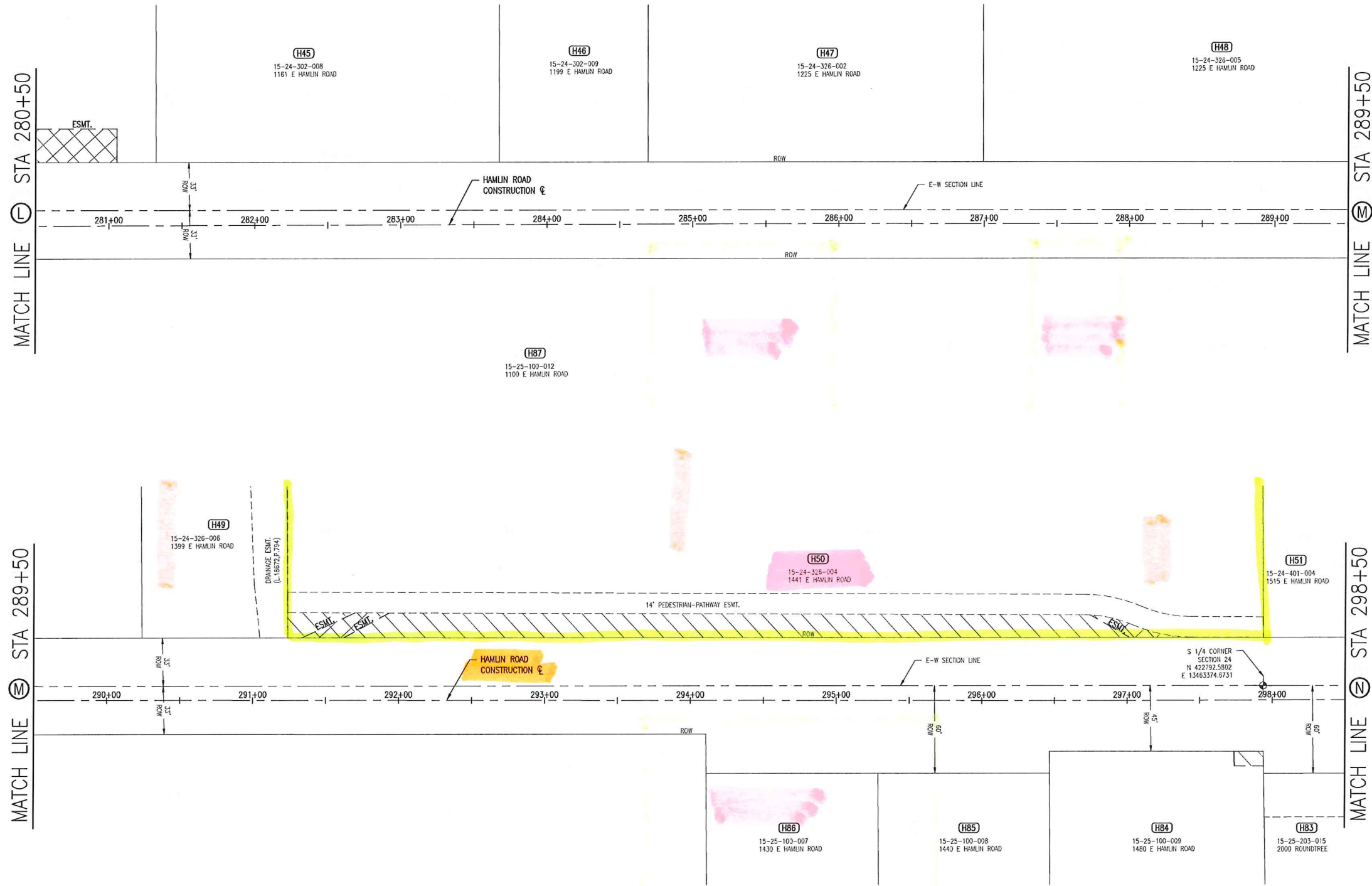


DRAWING PATH: P:\4000_4100_Livonia\0190130010_Hamlin_Rd_Phase_111.dwg\130010PROV1.dwg Oct 17, 2014 - 2:09pm

| | | | |
|---------------------|-------------|---------------|--------------|
| BENCHMARK #212 | N 42283.23 | E 13462058.59 | ELEV 729.159 |
| TRAVERSE POINT #112 | N 422875.25 | E 13462011.37 | ELEV 728.17 |
| BENCHMARK #213 | N 422708.15 | E 13462098.65 | ELEV 726.197 |
| TRAVERSE POINT #113 | N 422719.58 | E 13462725.00 | ELEV 725.95 |
| BENCHMARK #214 | N 422742.69 | E 13463575.74 | ELEV 725.944 |

HAMLIN ROAD

(R.O.W. VARIES)



LEGEND

| | |
|--|-------------------------------------|
| | PROPOSED HIGHWAY EASEMENT |
| | PROPOSED TEMPORARY GRADING EASEMENT |
| | PROPOSED PERMANENT PATHWAY EASEMENT |

NOTE: SEE CONSTRUCTION SHEETS FOR STATIONS OF ROW LIMITS.

DRAWING PATH: P:\0000_4100_Livonia\0190130010_Hamlin_Rd_Phase_1\100\misc\130010ROWV2.dwg Oct 17, 2014 - 2:10pm



Know what's below.
Call before you dig.



| | | | | | | | | | | | | |
|--|------|----------|---------|---------|-------|--------|----------------|-------------------------|-----------|--------|--------------|-----------|
| DATE | CADD | ENG/ARCH | PROJ/GR | SECTION | TOWN | RANGE | COUNTY | CITY/TOWNSHIP | SCALE | V. N/A | HORIZ/VERT | REVISIONS |
| | MB | ES | ML | 22-27 | T.3N. | R.11E. | OAKLAND COUNTY | CITY OF ROCHESTER HILLS | H. 1"=40' | | 0190-13-0010 | |
| CITY OF ROCHESTER HILLS REVISIONS: | | | | | | | | | | | | |
| 34000 Plymouth Road Livonia, MI 48150 P (734) 522-6711 F (734) 522-6427 WWW.OHM-ADVISORS.COM COPYRIGHT 2012 OHM ALL DRAWINGS AND WRITTEN MATERIALS APPEARING HEREIN CONSTITUTE THE ORIGINAL AND UNPUBLISHED WORK OF OHM AND THE SAME MAY NOT BE DUPLICATED, DISTRIBUTED, OR DISCLOSED WITHOUT PRIOR WRITTEN CONSENT OF OHM | | | | | | | | | | | | |

HAMLIN ROAD
REHABILITATION
ROW VICINITY MAP

SHEET
18
OF 111

HAMLIN ROAD (93' R.O.W.)



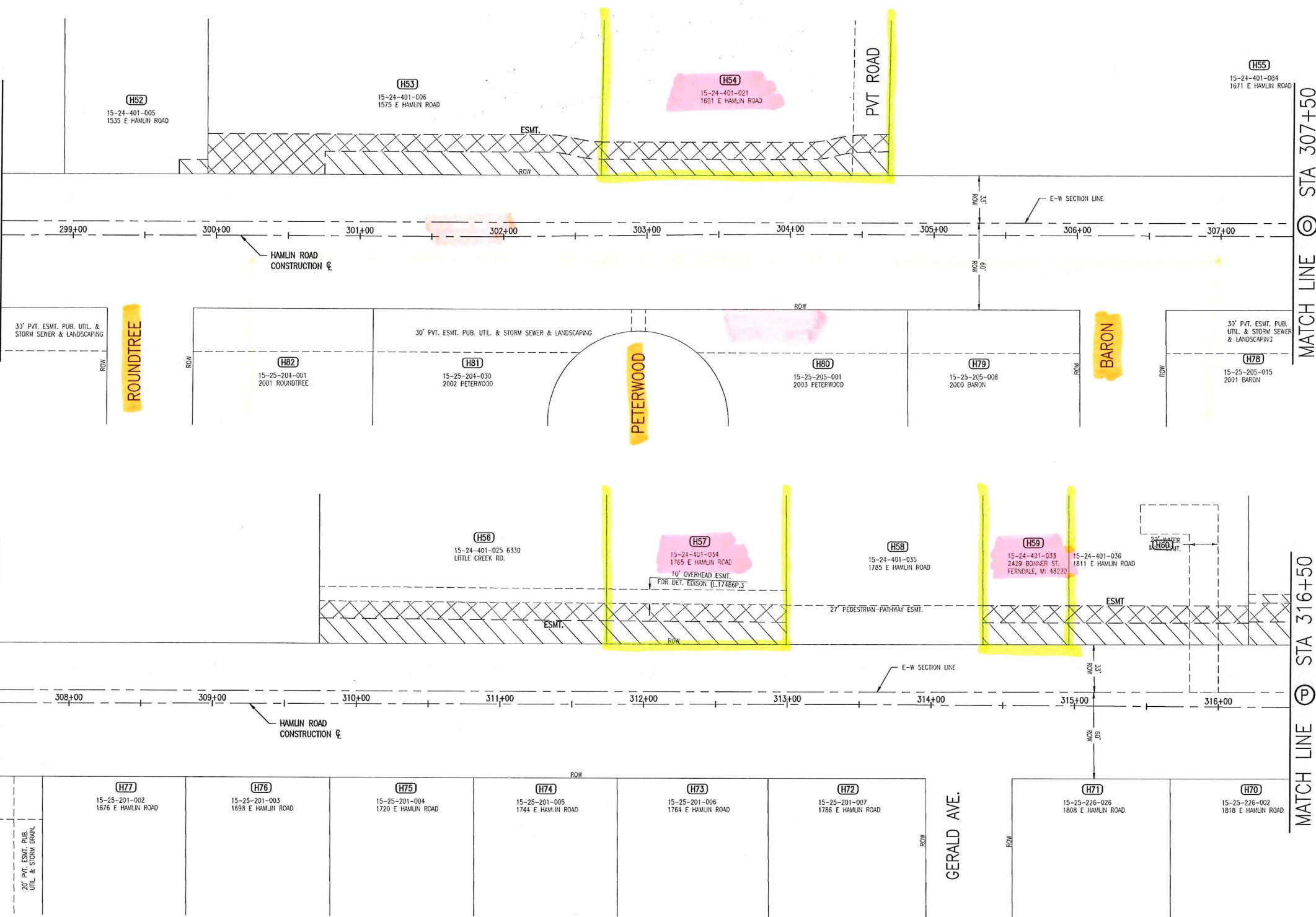
| |
|---|
| BENCHMARK #213 N 422708.15 E 13462698.65 ELEV 726.197 |
| TRAVERSE POINT #114 N 422750.72 E 13463606.52 ELEV 725.08 |
| BENCHMARK #214 N 422742.69 E 13463575.74 ELEV 725.944 |
| BENCHMARK #215 N 422910.24 E 13464584.69 ELEV 722.412 |
| TRAVERSE POINT #115 N 422870.58 E 13464590.38 ELEV 722.34 |
| TRAVERSE POINT #116 N 422814.66 E 13465189.92 ELEV 718.66 |
| BENCHMARK #216 N 422821.36 E 13465119.83 ELEV 718.401 |

MATCH LINE @ STA 298+50

MATCH LINE @ STA 307+50

MATCH LINE @ STA 307+50

MATCH LINE @ STA 316+50



LEGEND

| | |
|--|-------------------------------------|
| | PROPOSED HIGHWAY EASEMENT |
| | PROPOSED TEMPORARY GRADING EASEMENT |
| | PROPOSED PERMANENT PATHWAY EASEMENT |

NOTE: SEE CONSTRUCTION SHEETS FOR STATIONS OF ROW LIMITS.



| | | | | | | | | | |
|---------------|------|----------|---------|---------------|-------|----------------|-------------------------|-----------|--------------|
| DATE | CADD | ENG/ARCH | PROJUGR | TOWN | RANGE | COUNTY | CITY/TOWNSHIP | SCALE | VERT DATUM |
| | KB | ES | ML | T.27N. R.11E. | 22-27 | OAKLAND COUNTY | CITY OF ROCHESTER HILLS | H: 1"=40' | NA |
| SECTION | | | | | | | CITY OF ROCHESTER HILLS | | 0190-13-0010 |
| PROJECT | | | | | | | CITY OF ROCHESTER HILLS | | |
| CLIENT | | | | | | | CITY OF ROCHESTER HILLS | | |
| PROJ# | | | | | | | CITY OF ROCHESTER HILLS | | |
| DATE | | | | | | | CITY OF ROCHESTER HILLS | | |
| CADD | | | | | | | CITY OF ROCHESTER HILLS | | |
| ENG/ARCH | | | | | | | CITY OF ROCHESTER HILLS | | |
| PROJUGR | | | | | | | CITY OF ROCHESTER HILLS | | |
| TOWN | | | | | | | CITY OF ROCHESTER HILLS | | |
| RANGE | | | | | | | CITY OF ROCHESTER HILLS | | |
| COUNTY | | | | | | | CITY OF ROCHESTER HILLS | | |
| CITY/TOWNSHIP | | | | | | | CITY OF ROCHESTER HILLS | | |
| SCALE | | | | | | | CITY OF ROCHESTER HILLS | | |
| VERT DATUM | | | | | | | CITY OF ROCHESTER HILLS | | |

**HAMLIN ROAD
REHABILITATION
ROW VICINITY MAP**

34000 Plymouth Road | Livonia, MI 48150 | P (734) 522-6711 | F (734) 522-6427
WWW.OHM-ADVISORS.COM

SHEET
19
OF 111



DRAWING PATH: P:\A000_4100_Livonia\0190130010_Hamlin_Rd_Phase_1\Drawings\Misc\3001\PROVIZ.dwg Oct 17, 2014 - 2:10pm