

TAG	MATERIAL	MANUFACTURE	COLOR/ MODEL	SIZE	REMARKS/ NOTES
1	CUSTOM NATURAL LIVINGSTONE ON-TABS WALL SYSTEM	CUSTOM STONE WORKS	BUFF-GROUT TO MATCH STONE	120 X 12H X 24W	CONTACT QUARR FANS 1/24/14/2015
2	CERAMIC UNIT - EXTERIOR STRUCTURAL WALL W/ ACUTE SHELF (W/ TAPER) (SEE ELEVATION)	GRAND BLANC CERAMIC PRODUCTS	ROUBRON SPANISH GRAY GROUT	120 X 4H X 16W	CONTACT: KIM HUNT (616) 894-1530
3	BURNISHED MASONRY UNIT - EXTERIOR STRUCTURAL WALL	GRAND BLANC CERAMIC PRODUCTS	EXARISTON - SPANISH GRAY GROUT	120 X 8H X 16W	CONTACT: KIM HUNT (616) 894-1530
4	ALUMINUM COMPOSITE PANEL SYSTEM	OMEGA PANEL MOD. LUMINAR SYSTEM	BRIGHT SILVER	SEE WALL SECTIONS	CONTACT: TOM OLSON (734) 773-9288
5	EPS - CORNICE	DRYVIT SENSORY OR DRIVIT SENSORY FINISH	BRUSHED GRANITE	SEE WALL SECTIONS	SEE WALLS, SPECIFICATIONS FOR DETAILS
6	GAS PUMP	8" SHELL SUPPLIER			
7	FRAMING FINISH W/ METAL FRAMING	SIMBELLA	UNFIN	REFER TO FLOOR PLAN FOR FINISH	PROVIDE COLOR TO PLANNER
8	CLEAR INSULATED GLASS IN DARK BRONZE ALUMINUM FRAME STATIONARY SYSTEM	TUBELINE	CLEAR ANOD. ALUM. / SILVER METALIC	SEE SHEET A-8.1 FOR DETAILS	SEE WALLS, SPECIFICATIONS FOR DETAILS
9	NON-MOUNT THERMANT DOOR ENTRY W/ 10" HIGH SECTION PANEL	TUBELINE	COLOR TO MATCH STATIONARY SYSTEM	SEE SHEET A-8.1 FOR DETAILS	SEE WALLS, SPECIFICATIONS FOR DETAILS
10	SHELL ACM FLASHING	8" SHELL SUPPLIER			
11	EXTERIOR DECORATIVE WALL MOUNTED SCIENCE	OCA ARCHITECTURAL	LED ALLURE / SILVER	24" HIGH X 6" WIDE	SEE MANUFACTURE SPECIFICATIONS FOR DETAILS
12	ALUMINUM SHADING DEVICE	GREEN HECK	METALIC / ANODIZED ALUM FINISH	REFER TO WALL SECTIONS	SEE WALLS, SPECIFICATIONS FOR DETAILS
13	WIRE MESH SCREENING (1" X 1" GRID) W/ BRUSHED VINYL GREEN FINISH				

BUILDING CODE COMPLIANCE & GENERAL INFO	
BUILDING CODE:	<ul style="list-style-type: none"> - 2012 MICHIGAN BUILDING CODE - AMERICAN NATIONAL STANDARD - ACCESSIBLE AND USABLE BUILDINGS AND FACILITIES (ICC/ANSI A117.1-2009) - 2012 MICHIGAN ELECTRICAL CODE - 2012 MICHIGAN FIRE CODE - 2012 MICHIGAN ELECTRICAL CODE - NFPA 70 - 2012 MICHIGAN FIRE CODE - 2013 INTERNATIONAL FIRE CODE
PROJECT DESCRIPTION:	PROPOSED NEW 2,700 SF SINGLE STORY RETAIL BUILDING & WAREHOUS FOR THE PROPOSED GAS STATION.
BUILDING AREA INFORMATION:	<ul style="list-style-type: none"> USE GROUP: 8 (BUSINESS) GROSS FLOOR AREA: 2,700 G.S.F. CONSTRUCTION TYPE: I.R. NON-SPRINKLED
BUILDING HEIGHT AND AREA:	2,700 SF 23 FEET MAX PROPOSED HEIGHT (FEET)
PLUMBING FIXTURE COUNT:	1 RESTROOM WILL BE PROVIDED BY LANDLORD W/ DRINKING FOUNTAIN. TENANT TO SUBMIT PLUMBING AFFIDAVIT FROM CHAPTER 4 (MPC 2012) AND SHALL NOT EXCEED AN OCCUPANT LOAD OF 15.

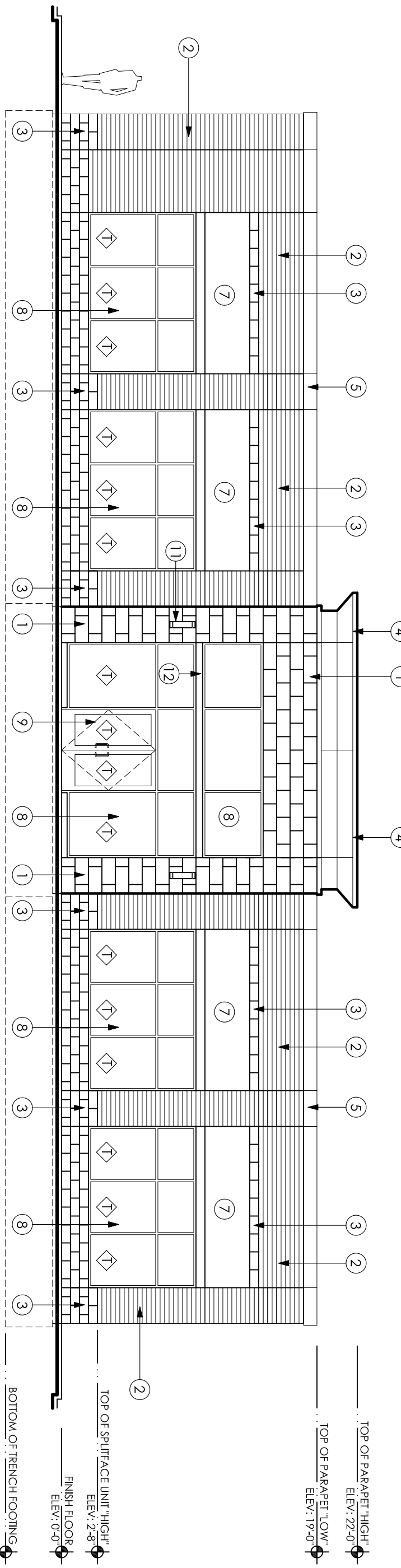
FLOOR NOTES:	
1	#7 REINFORCED CONC. SLAB W/ M.I. X 1 X 1 W 1.4 W.W.F. (WIRE FABRIC) OVER 6" MIN. NON-SLAB OF 4" #4 REINFORCER. REFER TO WALL SECTIONS & FOUNDATION PLAN FOR DETAILS.
2	CLEAR EXTERIOR STRUCTURAL WALL - 10" G. WALL LOAD GROUT SOLID. EXTEND INTO BENCH FOOTINGS (TYP.) REFER TO FOUNDATION AND WALL SECTIONS FOR DETAILS.
3	CLEAR INSULATED GLASS IN ANODIZED ALUMINUM FRAME ENTRY DOOR.
4	CLEAR INSULATED GLASS IN ANODIZED ALUMINUM FRAME STATIONARY WINDOW WALL SYSTEM.

ABRO ARCHITECTURE INTERIORS PLANNING

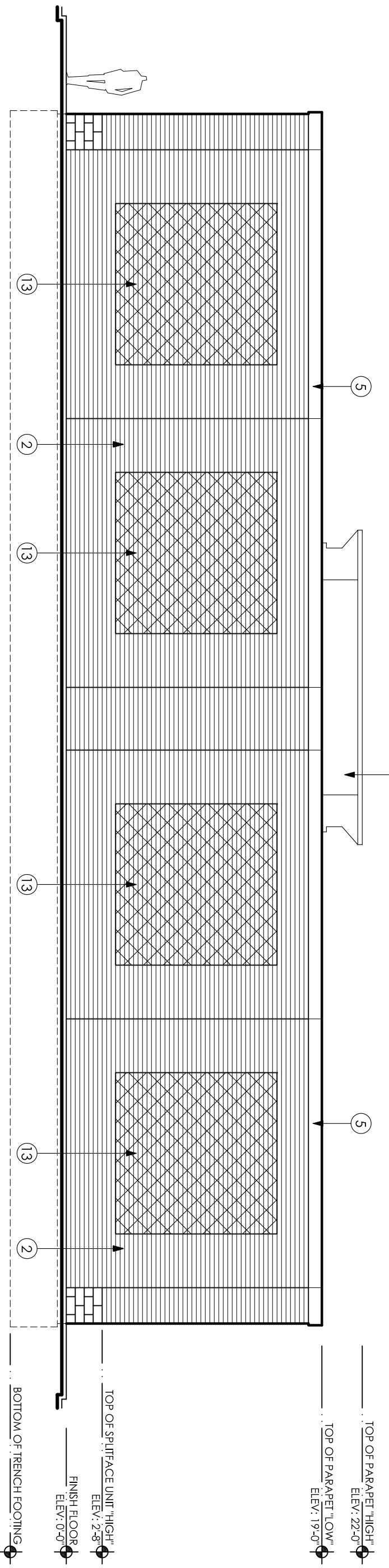
ABRO DESIGN GROUP, INC.
30600 NORTHWESTERN HWY.
SUITES 310
FARMINGTON HILLS, MI 48334
P. 248-254-3834 F. 248-671-2772
WWW.ABRODESIGNGROUP.COM

PROJECT:
GAS STATION

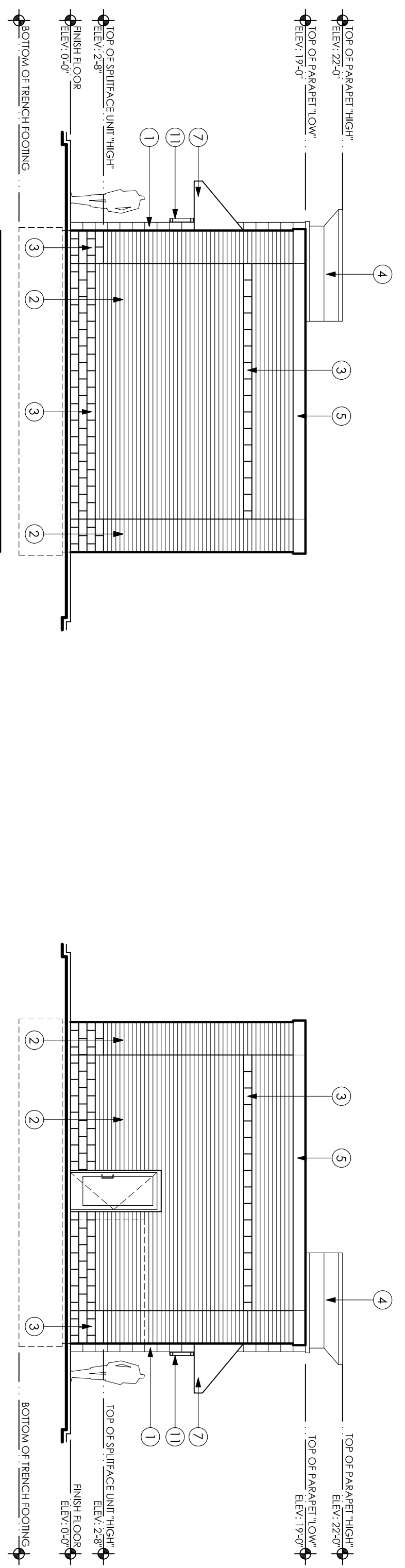
- GAS STATION RENOVATION -
2020 ROCHESTER ROAD,
ROCHESTER HILLS, MI 48307



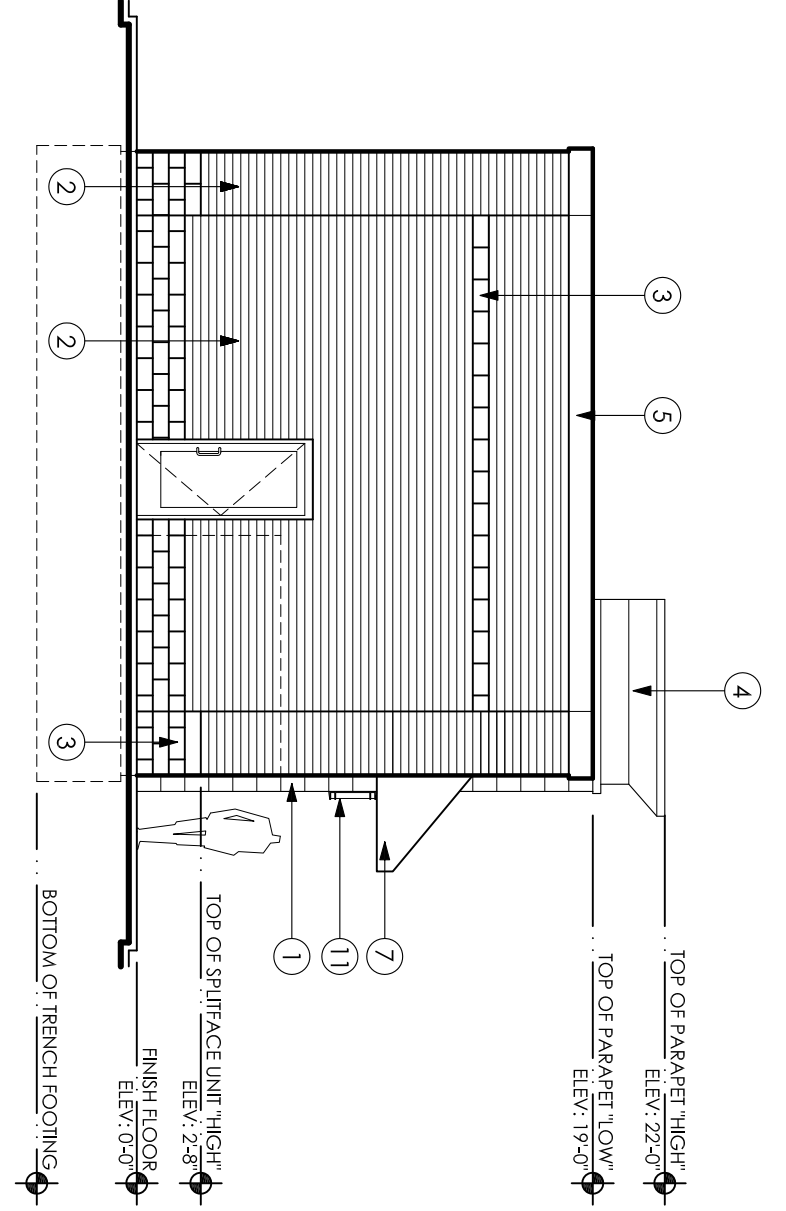
EAST ELEVATION
SCALE: 1/8" = 1'-0"



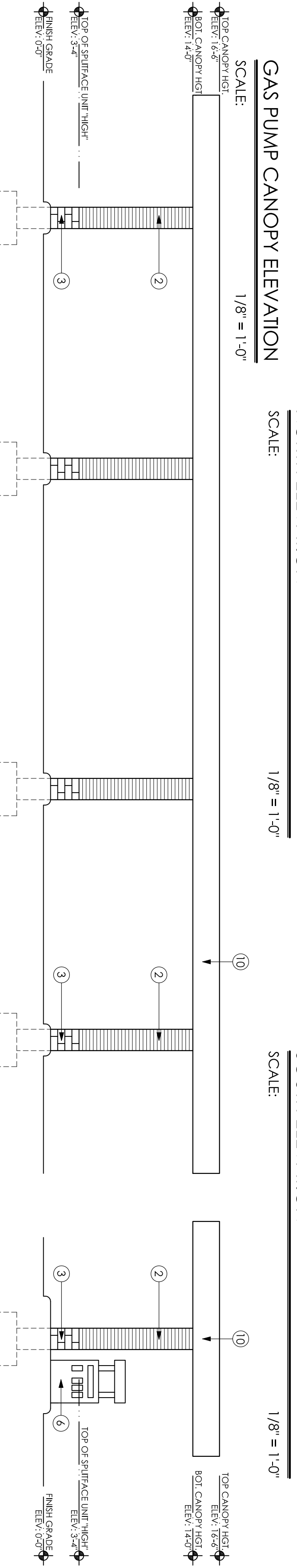
WEST ELEVATION
SCALE: 1/8" = 1'-0"



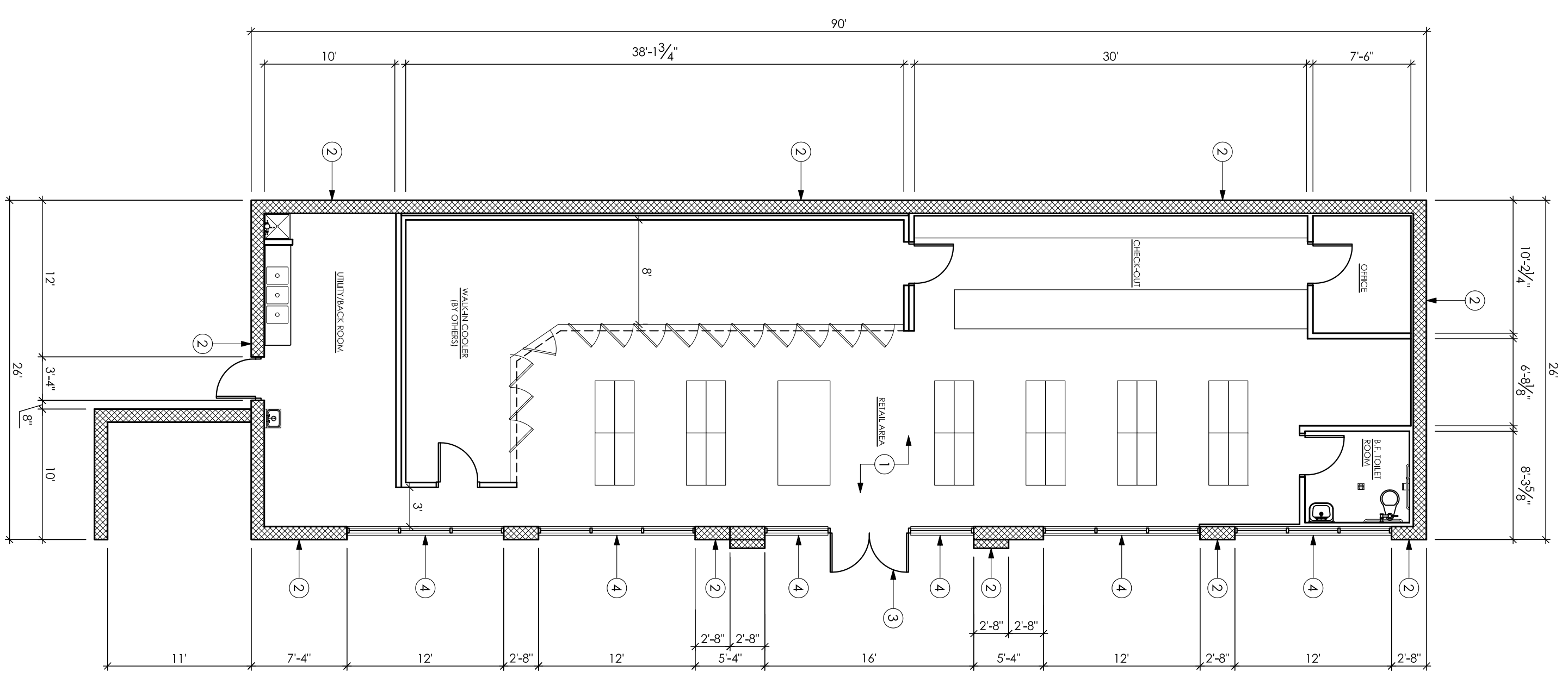
NORTH ELEVATION
SCALE: 1/8" = 1'-0"



SOUTH ELEVATION
SCALE: 1/8" = 1'-0"



GAS PUMP CANOPY ELEVATION
SCALE: 1/8" = 1'-0"



FLOOR PLAN
SCALE: 1/8" = 1'-0"

SHEET NO: A-110

PROJECT NO: 102516

DATE: 03.01.17 **ISSUE:** SITE PLAN REVIEW

04.13.17 REVISED SITE PLAN REVIEW

DO NOT SCALE DRAWINGS
USE FIGURED DIMENSIONS ONLY

THESE PLANS ARE THE EXCLUSIVE PROPERTY OF ABRO DESIGN GROUP, INC. THESE PLANS ARE NOT TO BE REPRODUCED, COPIED, OR TRANSMITTED IN ANY FORM OR MANNER WHATSOEVER, NOR ARE THEY TO BE USED FOR ANY OTHER PROJECT WITHOUT THE WRITTEN CONSENT OF ABRO DESIGN GROUP, INC.

© COPYRIGHT 2016 ABRO DESIGN GROUP, INC.