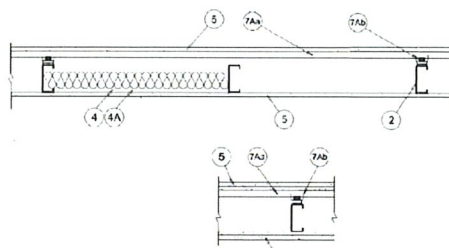
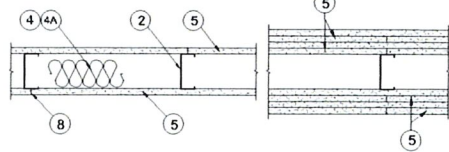


Nonbearing Wall Ratings — 1, 2, 3 or 4 Hr (See Items 4 & 5)



1. Floor and Ceiling Runners — (Not shown) — For use with Item 2 - Channel shaped, fabricated from min 25 MSG corrosion-protected steel, min depth to accommodate stud size, with min 1-1/4 in. long legs, attached to floor and ceiling with fasteners 24 in. OC max.

2. Steel Studs — Channel shaped, fabricated from min 25 MSG corrosion-protected steel, min depth as indicated under Item 5, spaced a max of 24 in. OC. Studs to be cut 3/8 to 3/4 in. less than assembly height.

3. Wood Structural Panel Sheathing — (Optional. For use with Item 5 Only.) - (Not Shown) - 4 ft wide, 7/16 in. thick oriented strand board (OSB) or 15/32 in. thick structural 1 sheathing (plywood) complying with DOC PS1 or PS2, or APA Standard PRP-108, manufactured with exterior glue, applied horizontally or vertically to the steel studs. Vertical joints centered on studs, and staggered one stud space from wallboard joints. Attached to studs with flat-head self-drilling tapping screws with a min. head diam. of 0.292 in. at maximum 6 in. OC. in the perimeter and 12 in. OC. in the field. When used, fastener lengths for gypsum panels increased by min. 1/2 in.

4A. Batts and Blankets* — (Optional) — Placed in stud cavities, any glass fiber or mineral wool insulation bearing the UL Classification Marking as to Surface Burning Characteristics and/or Fire Resistance. See Batts and Blankets (BKNV or BZJZ) Categories for names of Classified companies.

5. Gypsum Board* — Gypsum panels with beveled, square or tapered edges, applied vertically or horizontally. Vertical joints centered over studs and staggered one stud cavity on opposite sides of studs. Vertical joints in adjacent layers (multilayer systems) staggered one stud cavity. Horizontal joints need not be backed by steel framing. Horizontal edge joints and horizontal butt joints on opposite sides of studs need not be staggered. Horizontal edge joints and horizontal butt joints in adjacent layers (multilayer systems) staggered a min of 12 in. The thickness and number of layers for the 1 hr, 2 hr, 3 hr and 4 hr ratings are as follows:

Gypsum Board Protection on Each Side of Wall

Rating, Hr	Min Stud Depth, in. Items 2, 2C, 2D, 2F and 2G	No. of Layers & Thickness of Panel	Min Thickness of Insulation (Item 4)
1		1	
2	1-5/8	2 layers, 5/8 in.	Optional

CGC INC	1/2 in. thick Type C, IP-X2 or IPC-AR; WRC; 5/8 in. thick Type AR, C, IP-AR, IP-X1, IP-X2, IPC-AR, SCX, SHX, WRX or WRC; 3/4 in. thick Types IP-X3 or ULTRACODE
UNITED STATES GYPSUM CO	1/2 in. thick Type C, IP-X2, IPC-AR or WRC; 5/8 in. thick Type SCX, SHX, WRX, IP-X1, AR, C, WRC, FX-X, IP-AR, IP-X2, IPC-AR; 3/4 in. thick Types IP-X3 or ULTRACODE
USG MEXICO S A DE C V	1/2 in. thick Type C, IP-X2, IPC-AR or WRC; 5/8 in. thick Type AR, C, IP-AR, IP-X1, IP-X2, IPC-AR, SCX, SHX, WRX, WRC or; 3/4 in. thick Types IP-X3 or ULTRACODE

6. Fasteners — (Not shown) — For use with Items 2 and 2F - Type S or S-12 steel screws used to attach panels to studs (Item 2) or furring channels (Item 7). Two layer systems: First layer: 1 in. long for 1/2 and 5/8 in. thick panels or 1-1/4 in. long for 3/4 in. thick panels, spaced 16 in. OC. Second layer: 1-5/8 in. long for 1/2 in., 5/8 in. thick panels or 2-1/4 in. long for 3/4 in. thick panels, spaced 16 in. OC with screws offset 8 in. from first layer.

8. Joint Tape and Compound — Vinyl or casein, dry or premixed joint compound applied in two coats to joints and screw heads of outer layers. Paper tape, nom 2 in. wide, embedded in first layer of compound over all joints of outer layer panels. Paper tape and joint compound may be omitted when gypsum panels are supplied with a square edge.

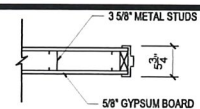
Last Updated on 2013-04-09

General Notes

- INSULATION AND FINISH NOTES:
1. BATT: SMOKE DEVELOPED RATING TO BE LESS THAN 450 AS TESTED BY ASST. - E84. PROVIDE DOCUMENTATION TO BUILDING INSPECTOR.
 2. RIGID: MUST HAVE A FLAME SPREAD OF LESS THAN 25 WHEN TESTED IN ACCORDANCE WITH ASTM E84. MUST ALSO COMPLY W/ ASTM D635, D1929, D2843 & E84.
 3. MOUNTING HEIGHT OF OPERABLE DEVICES - NO REACH SHALL EVER BE GREATER THAN 48" AFF NOR LESS THAN 15" AFF TO THE HIGHEST OPERABLE PART OF THE DEVICE OR FIXTURES. THIS SHALL INCLUDE SWITCHES, ELECTRICAL OUTLETS, THERMOSTATS, SOAP DISPENSERS, PAPER TOWEL HOLDERS, ETC.
 4. ALL INTERIOR FINISHES SHALL BE CLASS C OR BETTER.

Wall Types

1. EXISTING EXTERIOR WALLS TO REMAIN
2. TOILET ROOM PARTITION WALLS TO BE PROVIDED BY L.L. NON-RATED (22 GA - 38 mil) 3/8" OR (6" METAL AS NOTED) STUDS @ 24" O.C. MAX. W/ 5/8" GYP. BD. BOTH SIDES TO 12-0" A.F.F. w/ GYP. BD. CAP. (TAPED MUDDED, & READY FOR PAINT)
3. EXISTING NEW TENANT SEPARATION WALL, VERIFY WALL IN FIELD. SEE DETAIL THIS SHEET FOR UL U-419 DETAILS. ALL PENETRATIONS SHALL COMPLY WITH THIS. NEW WALL SHADED. PROVIDE SLIP TRACK CONNECTION AT ROOF.
4. NEW INTERIOR PARTITION WALL: (14 GA - 68 mil) 3/8" STUDS @ 12" O.C. MAX. W/ 5/8" GYP. BD. BOTH SIDES TO METAL DECK ABOVE IN SLIP TRACK (TAPED MUDDED, & READY FOR PAINT)
5. NEW INTERIOR PARTITION WALL: (20 GA - 33 mil) 3/8" METAL STUDS @ 24" O.C. MAX. W/ 5/8" GYP. BD. BOTH SIDES TO 12-0" A.F.F.
6. SAME AS #5 EXCEPT 44" TALL WITH STAINED WOOD CAP



Door and Frame Schedule

DOOR NO.	DOOR WIDTH	DOOR HEIGHT	DOOR THK	DOOR MATL	DOOR TYPE	FRAME MATL	FRAME TYPE	JAMB	HEAD	HDW SET	REMARKS/NOTES
001	3'-0"	7'-0"	1-3/4"	AL	B	AL	FR1	-	-	C	STOREFRONT DOORS BY L.L. VEST. DRB BY TEN
002	3'-6"	7'-0"	1-3/4"	H.M.	A	H.M.	FR1	8/A101	7/A101	A	EXISTING DOOR AND FRAME
003	3'-0"	7'-0"	1-3/4"	SCWD	A	H.M.	FR1	8/A101	7/A101	B	NEW DOOR AND FRAME
004	3'-0"	7'-0"	1-3/4"	AL	B	AL	FR1	8/A101	7/A101	-	NEW GLASS SLIDING DOOR AND FRAME
005	3'-0"	7'-0"	1-3/4"	SCWD	A	H.M.	FR1	8/A101	7/A101	D	NEW PAINTED WOOD DOOR AND FRAME

HARDWARE SETS	MANUFACT. LIST OR EQUAL
A. * 1 1/2 PAIR BUTT HINGES CLOSER THRESHOLD WEATHERSTRIP DOOR SWEEP DRIP CAP KICK PLATE LATCH GUARD PANIC BAR	FBB179 4 1/2 x 4 1/2 DC2210 424 x 36 x 1/2 134N5 x 3070 198N x 36 16AD x 40 AL AL AL AL AL AL AL
B. * 1 1/2 PAIR BUTT HINGES KEYED PRIVACY SET	FBB179 4 1/2 x 4 1/2 DC2210 26D 26D
C. * 1 1/2 PAIR BUTT HINGES CLOSER PUSH / PULL CYLINDER LOCK, MANUALLY OPERABLE FROM INTERIOR w/ LEVER HANDLE (OFFICE CYLINDER)	FBB179 4 1/2 x 4 1/2 DC2210 26D 26D
D. * 1 1/2 PAIR BUTT HINGES CLOSER PUSH / PULL	FBB179 4 1/2 x 4 1/2 DC2210 26D 26D

EGRESS NOTES:

- ALL EGRESS DOORS SHALL BE READILY OPENABLE IN THE DIRECTION OF EGRESS WITHOUT THE USE OF A KEY, SPECIAL KNOWLEDGE OR EFFORT.
- ALL OPERATING HARDWARE FOR DOORS SHALL OPEN WITHOUT TWISTING, GRASPING OR TIGHT PINCHING. REFER TO THE ACCESSIBILITY CODE FOR CLARIFICATIONS.

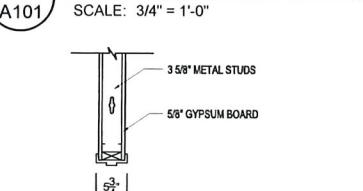
ABBREVIATIONS:

- SCWD - SOLID CORE WOOD DOOR
- H.M. - HOLLOW METAL
- TEMP. - TEMPERED GLASS

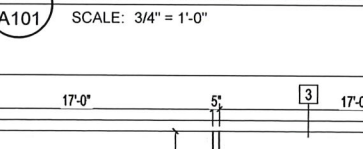
1. ALL INTERIOR FINISHES (PAINT (2 coats), WALL COVERINGS, CARPET, TILE, ETC.) TO BE PROVIDED AND INSTALLED BY OWNER'S SUBCONTRACTOR AND COORDINATED BY THE GENERAL CONTRACTOR.

2. ALL FINISHES MUST HAVE A FLAME SPREAD OF LESS THAN 25 AND SMOKE DEVELOPED OF LESS THAN 450 WHEN TESTED IN ACCORDANCE WITH ASTM E84. MUST ALSO COMPLY W/ ASTM D635, D1929, D2843 & E84.

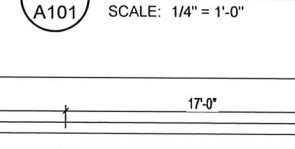
8 DOOR JAMB DETAIL



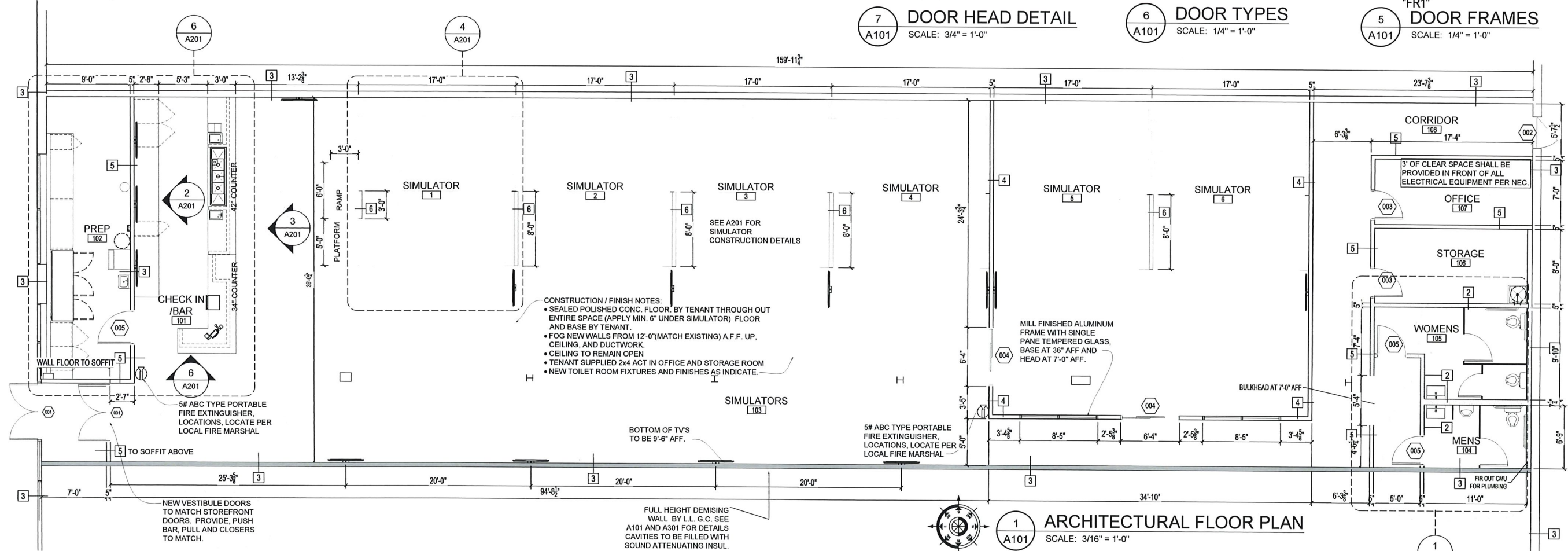
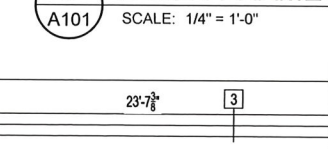
7 DOOR HEAD DETAIL



6 DOOR TYPES



5 "FR1" DOOR FRAMES



1 ARCHITECTURAL FLOOR PLAN

SCALE: 3/16" = 1'-0"



7580 48th Street, S.E.
Grand Rapids, MI, 49512
P. 616.634.2253
Glenn@rdc-llc.com

1134 S Rochester Rd,
Rochester Hills, MI 48307



DATE ISSUED FOR
07/11/2018 REVIEW
07/13/2018 Construction
08/13/2018 Per City Review

THIS DRAWING IS THE SOLE PROPERTY OF RETAIL DESIGN CONSULTANTS LLC AND IS A COPYRIGHTED DOCUMENT AND IS NOT TO BE USED OR REPRODUCED WITHOUT WRITTEN CONSENT.

A101