

CHARLOTTE



FRONT ELEVATION 'A'



FRONT ELEVATION 'B'



FRONT ELEVATION 'C'

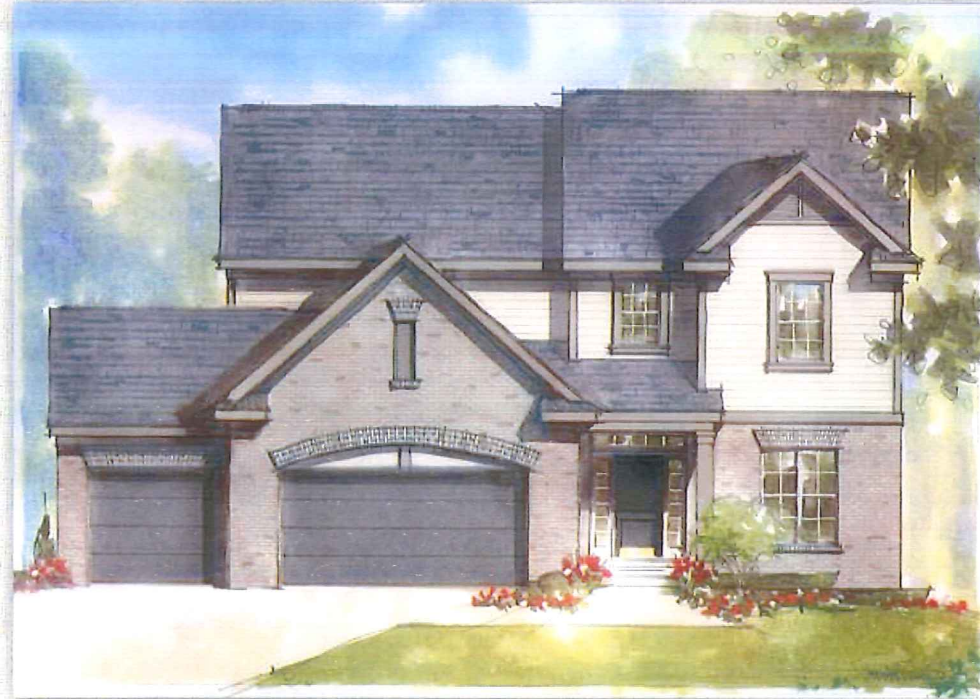


ARTIST RENDERINGS AND FLOOR PLANS ARE FOR ILLUSTRATION PURPOSES ONLY AND ARE SUBJECT TO CHANGE. THESE PLANS ARE NOT TO BE REPRODUCED, CHANGED, OR COPIED IN ANY FORM OR MANNER WHATSOEVER.

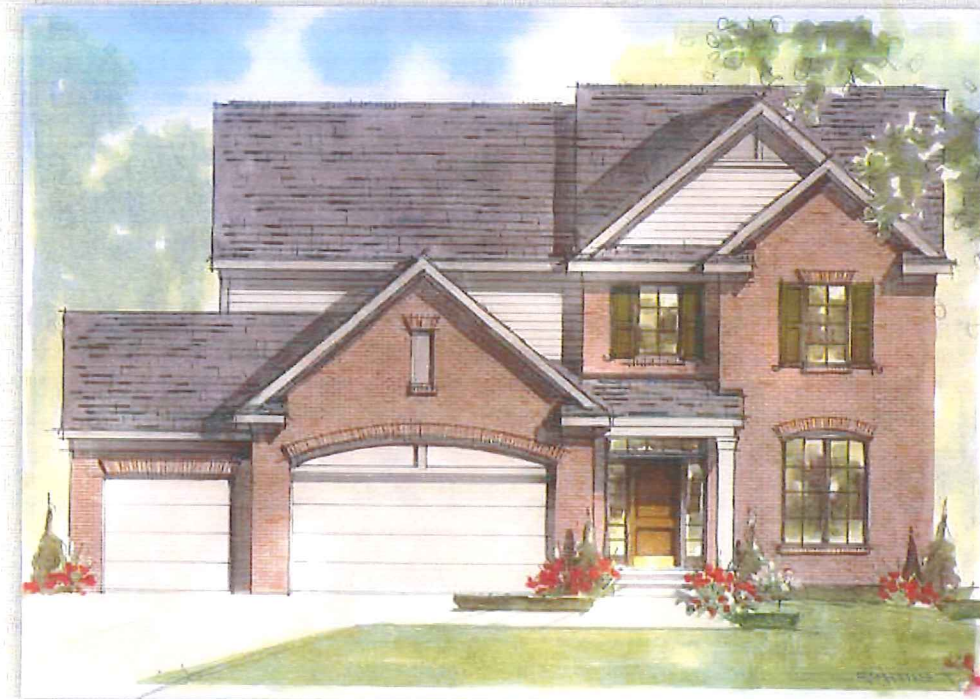
WE RESERVE THE RIGHT TO MAKE CHANGES IN DESIGN, FEATURES AND OPTIONS WITHOUT NOTICE OR OBLIGATION. FLOOR PLAN DIMENSIONS AND SQUARE FOOTAGES ARE APPROXIMATE. NOTE: PLANS WILL VARY PER ELEVATION.

© 2015 MJC Companies®

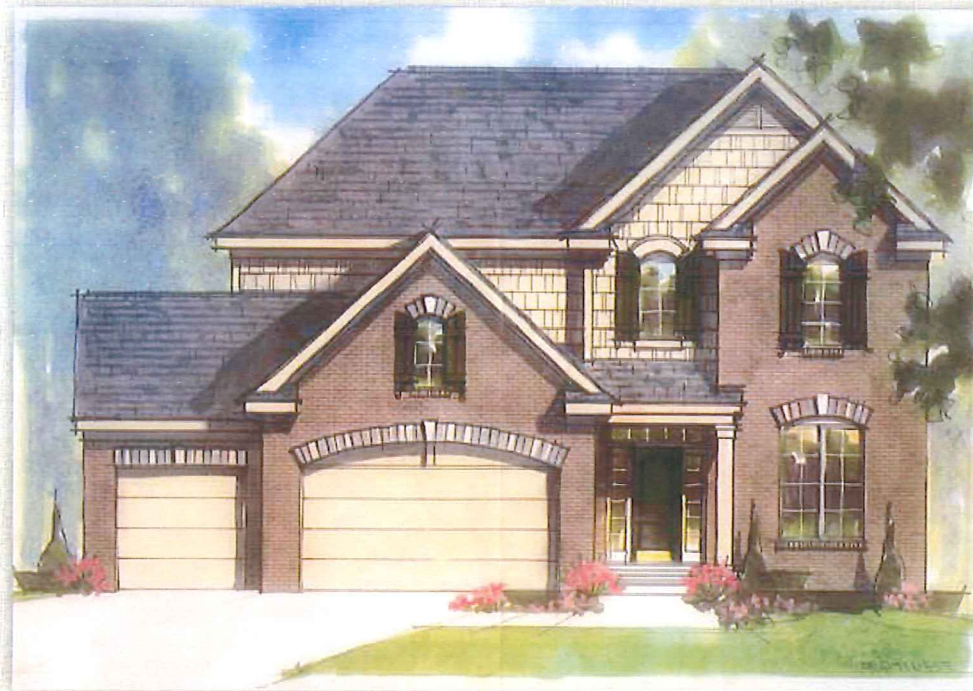
GALAXY



FRONT ELEVATION 'A'



FRONT ELEVATION 'B'



FRONT ELEVATION 'C'



ARTIST RENDERINGS AND FLOOR PLANS ARE FOR ILLUSTRATION PURPOSES ONLY AND ARE SUBJECT TO CHANGE. THESE PLANS ARE NOT TO BE REPRODUCED, CHANGED, OR COPIED IN ANY FORM OR MANNER WHATSOEVER.

WE RESERVE THE RIGHT TO MAKE CHANGES IN DESIGN, FEATURES AND OPTIONS WITHOUT NOTICE OR OBLIGATION. FLOOR PLAN DIMENSIONS AND SQUARE FOOTAGES ARE APPROXIMATE. NOTE: PLANS WILL VARY PER ELEVATION.

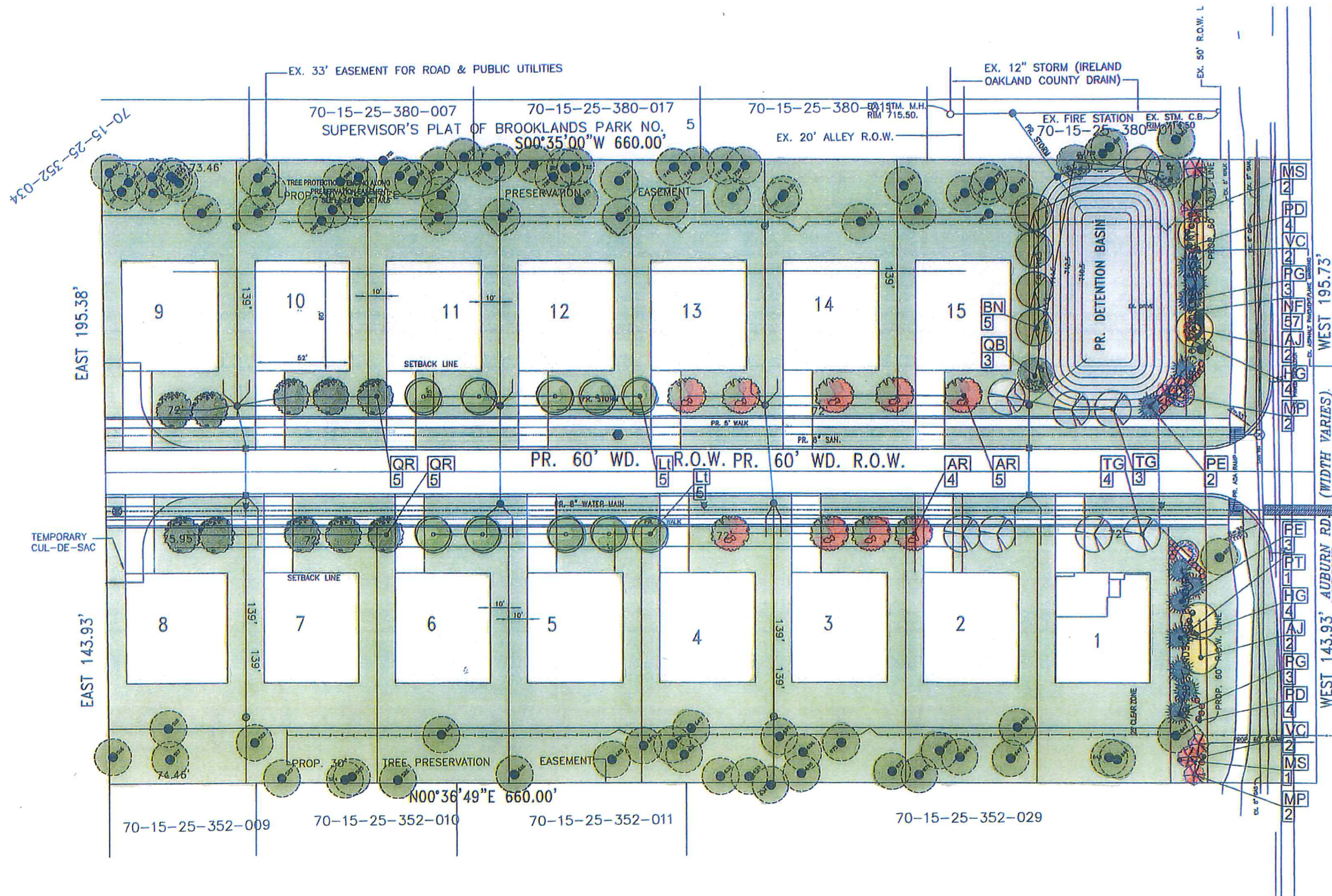
© 2014 MJC Companies®

WOODLAND CROSSINGS

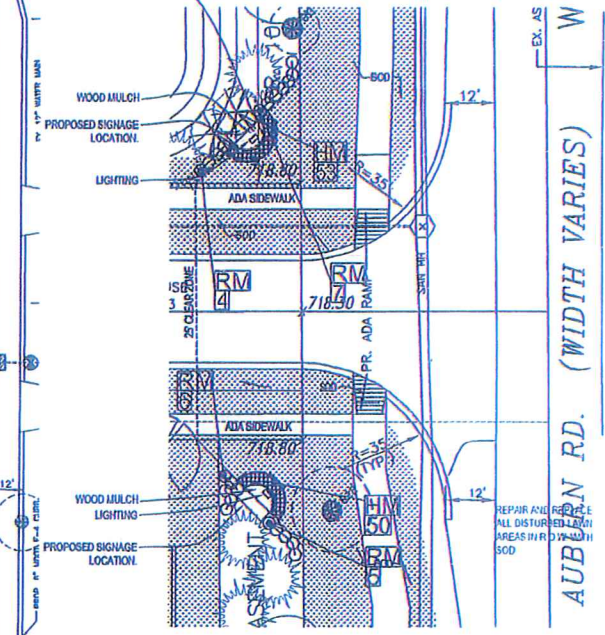
LANDSCAPING PLAN



**NÚÑEZ
DESIGN**



CLEARZONE AREA:
ALL PLANT MATERIAL INSTALLED IN THE LANDSCAPED AREAS WITHIN THE IDENTIFIED CLEAR ZONES, WILL NOT EXCEED AN UNMAINTAINABLE, MATURE HEIGHT OF 24 INCHES.



Entrance Planting Detail
SCALE: 1" = 20'-0"

- 1. AN IRRIGATION PLAN WILL BE PROVIDED WITH FINAL SUBMITTAL.
- 2. PROJECT SIGNAGE & FINAL DETAILS TO BE PROVIDED BY OTHERS.

WOODLAND CROSSINGS
177-183 E Auburn Rd.
Rochester Hills, MI

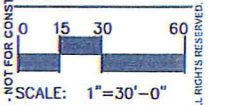
FILE NUMBER
PROJECT FILE

MJC COMPANIES
46600 Romeo Plank Rd., Suite 5
Macomb MI, 48044
588-263-1203
montalbanos@mjccompanies.com

06-16-2017 PRELIM SUBMITTAL
03-22-2017 CLIENT REVIEW
Date: 03/28/2017

**NÚÑEZ
DESIGN**
LANDSCAPE ARCHITECTURE & LANDSCAPES BY
240 Park Street
Troy, Michigan 48063
P: 248. 224. 5933
nunezdesigninc@gmail.com

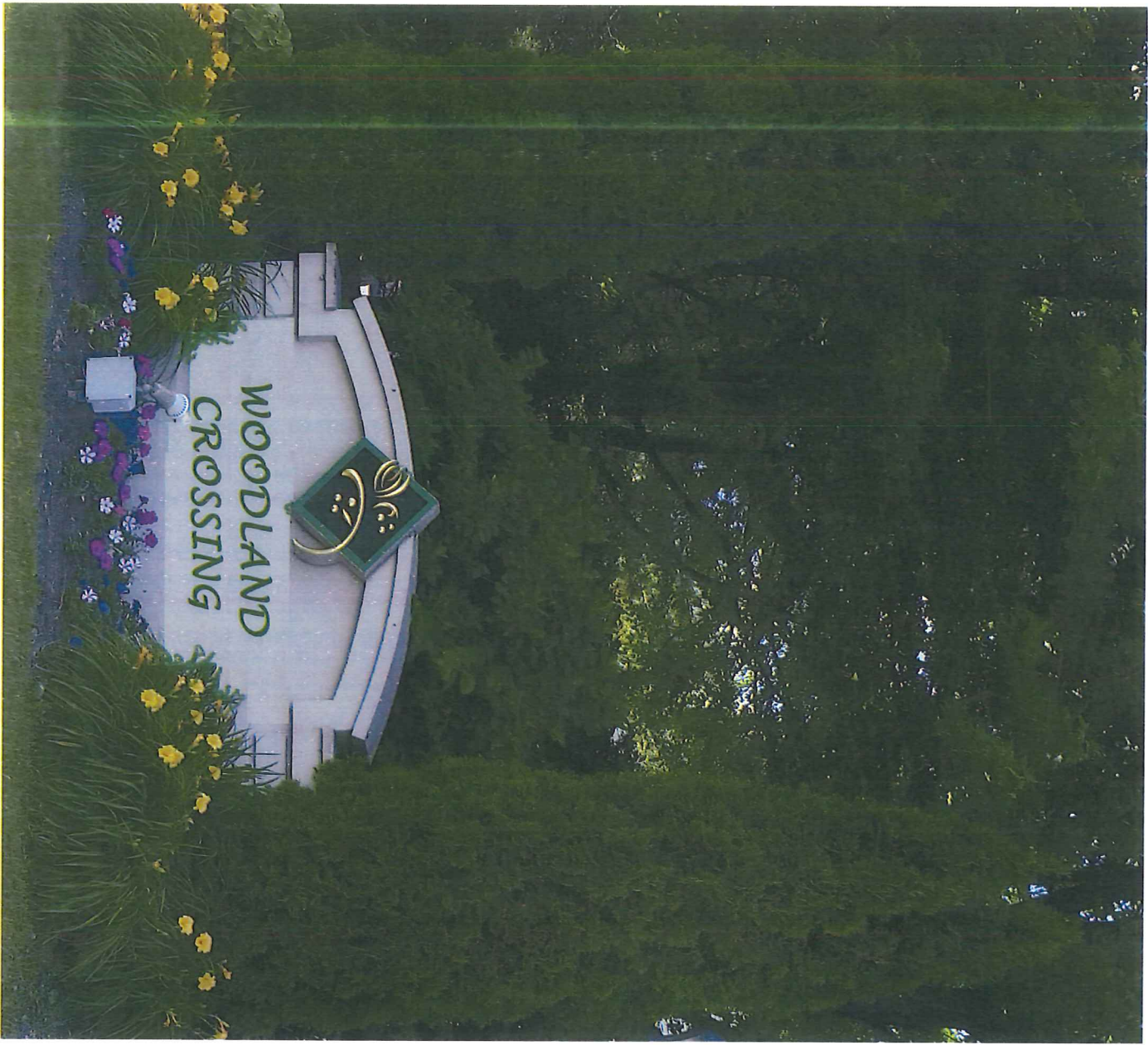
Designed / Drawn: RLH / RC
Checked / Approved: RLH
Job # NO2-08



811
Know what's below.
Call before you dig.
SHEET:
LA-2.1

NOTES:
BASE INFORMATION PROVIDED BY LAND DEVELOPMENT CONSULTING SERVICES, INC.

COPYRIGHT © 2017 NUNEZ DESIGN, INC. ALL RIGHTS RESERVED. THE STATEMENT AND THE SUBJECT MATTER CONTAINED HEREIN IS PRELIMINARY AND IS NOT TO BE USED OR REPRODUCED WITHOUT THE WRITTEN PERMISSION OF NUNEZ DESIGN, INC.



PROPOSED ENTRANCE SIGN