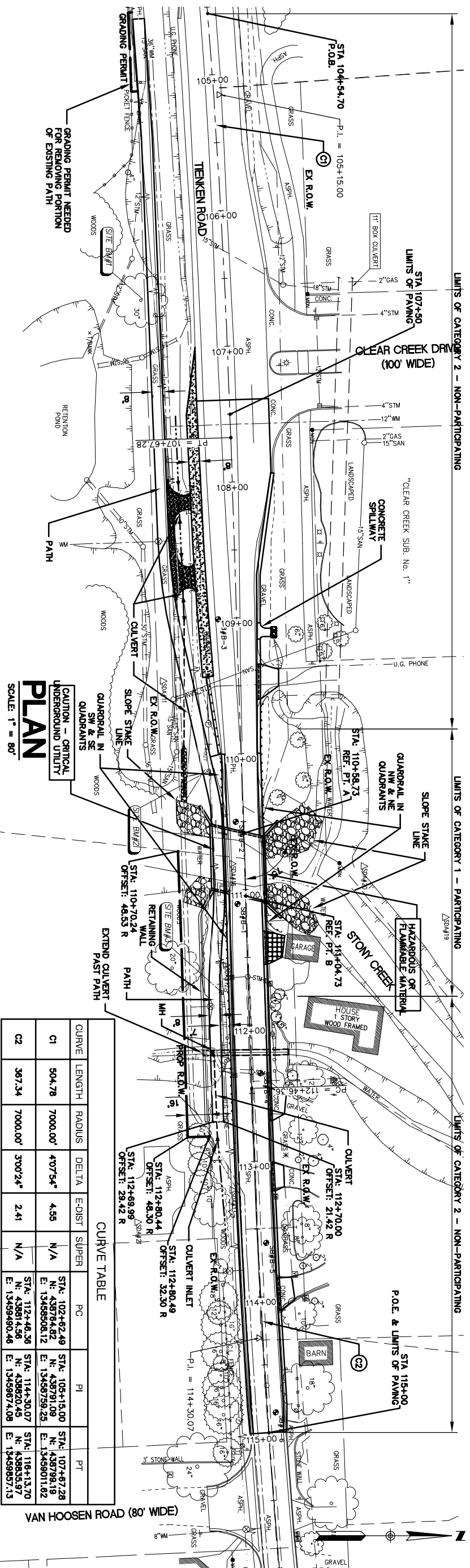


LIMITS OF CATEGORY 2 - NON-PARTICIPATING

LIMITS OF CATEGORY 1 - PARTICIPATING

LIMITS OF CATEGORY 2 - NON-PARTICIPATING



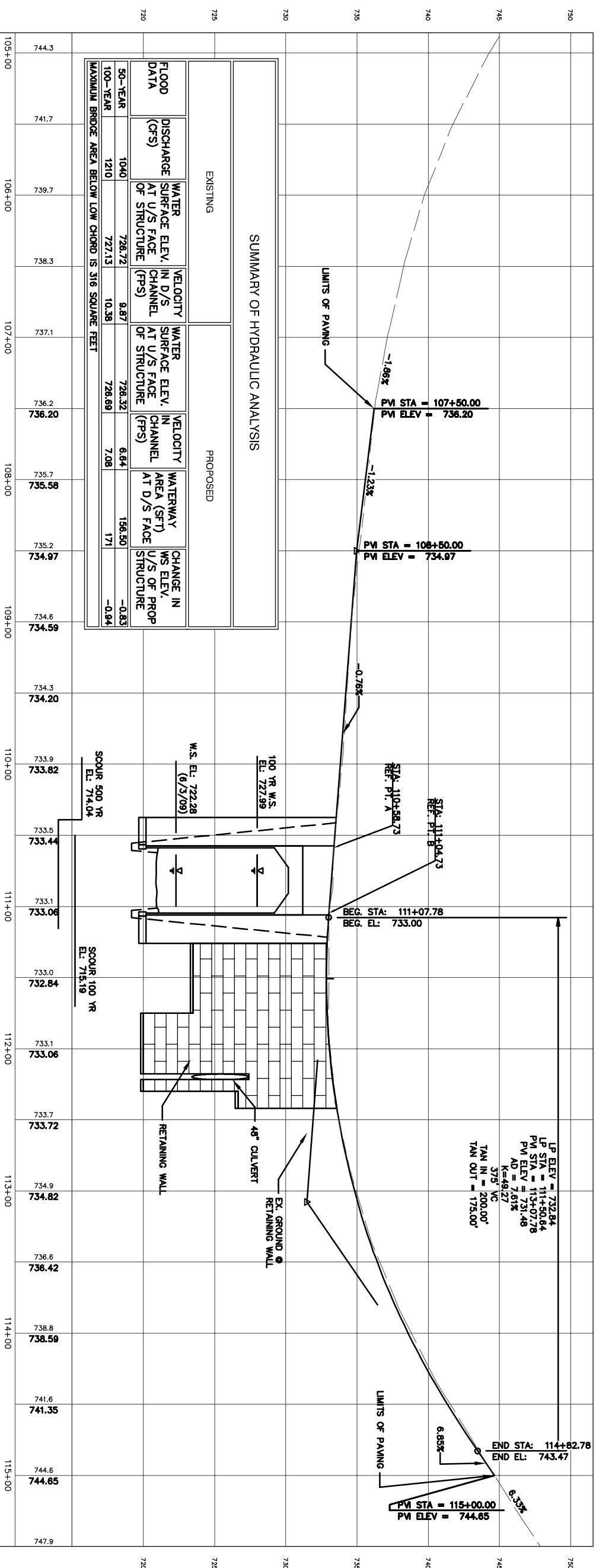
**PLAN**  
SCALE: 1" = 80'

CURVE	LENGTH	RADIUS	DELTA	E-DIST	SUPER	PG	PI	PT
C1	504.78	7000.00'	40°54'	4.55	N/A	STA: 107+82.49 N: 438824.42 E: 13458908.12	STA: 108+15.00 N: 438821.09 E: 13458798.25	STA: 107+87.28 N: 438829.18 E: 13458901.02
C2	367.34	7000.00'	3°00'24"	2.41	N/A	STA: 112+46.36 N: 438814.56 E: 13458974.06	STA: 114+30.07 N: 438820.45 E: 13458974.06	STA: 116+13.70 N: 438835.97 E: 13458957.13

**SUMMARY OF HYDRAULIC ANALYSIS**

FLOOD DATA	EXISTING			PROPOSED			CHANGE IN WS ELEV. U/S OF PROP STRUCTURE
	DISCHARGE (CFS)	WATER SURFACE ELEV. AT U/S FACE OF STRUCTURE	VELOCITY IN D/S CHANNEL AT U/S FACE OF STRUCTURE (FPS)	WATER SURFACE ELEV. AT U/S FACE OF STRUCTURE	VELOCITY IN D/S CHANNEL AT U/S FACE OF STRUCTURE (FPS)	WATERWAY AREA (SFT) U/S OF STRUCTURE	
50-YEAR	1040	726.72	9.87	726.32	6.64	156.50	-0.83
100-YEAR	1210	727.13	10.38	726.69	7.08	171	-0.94

MAXIMUM BRIDGE AREA BELOW LOW CHORD IS 316 SQUARE FEET



**PROFILE**  
SCALE: 1" = 80' (HORIZ.)  
1" = 10' (VERT.)



**Spalding DeDecker Associates, Inc.**

Engineering Consultants  
Infrastructure • Land Development • Surveying

220 W. Congress, Suite 400  
Detroit, MI 48226  
Phone: (313) 967-4700  
Fax: (313) 967-4707

903 South Blvd. East  
Rochester Hills, MI 48307  
Phone: (248) 844-5400  
Fax: (248) 844-5404

10503 Clanton Dr., Suite 600  
Birmingham, MI 48116  
Phone: (810) 534-1400  
Fax: (810) 534-1402

www.sda-eng.com



NOTE: UTILITY INFORMATION ON THE DRAWING MAY BE FROM INFORMATION DISCLOSED TO THIS FIRM BY THE VARIOUS UTILITY COMPANIES. CITY/COUNTY AGENCIES AND OTHER VARIOUS SOURCES. UNDERGROUND UTILITIES WHICH ARE NOT SHOWN ON THIS DRAWING ARE NOT TO BE USED OR ACCURACY THEREOF IS NOT GUARANTEED. THE LOCATION, DEPTH, AND CHARACTERISTICS OF ALL UTILITIES SHOWN ON THIS DRAWING ARE APPROXIMATED FROM FOUND PANTS, MARKS/STAKES, ETC. AS LOCATED BY THIS FIRM. A GUARANTEE IS GIVEN AS TO THE COMPLETENESS OR ACCURACY THEREOF.

BEFORE TO CONSTRUCTION, ALL LOCATIONS AND DEPTHS OF UTILITIES SHOWN ON THIS DRAWING (PROPOSED APPROVED) SHALL BE VERIFIED IN THE FIELD. CALL MISS DIG.

CONTRACT © 2009 SPALDING DEDECKER ASSOCIATES, INC. ALL RIGHTS RESERVED. THE SUBJECT MATTER CONTAINED THEREIN IS REPRODUCED WITHOUT WRITTEN PERMISSION OF SPALDING DEDECKER ASSOCIATES, INC.

**ROAD COMMISSION FOR OAKLAND COUNTY  
TENKEN & PARKDALE ROADS  
OVER STONY CREEK  
BRIDGE RECONSTRUCTION  
GENERAL PLAN OF SITE  
TENKEN ROAD**

SECTION 2  
TOWN 3 NORTH RANGE 11 EAST  
CITY OF ROCHESTER HILLS  
OAKLAND COUNTY

NO.	DATE	REVISION

LAST	RECORD MEASUREMENTS ADDED TO DRAWING	DATE

**VERTICAL CURVES**  
**BE NOT ONE INCH ON THIS SHEET.**  
FOR THE MOST ACCURATE DRAWING  
49293  
R080006TS&L  
SCALE:  
1" = 80'  
6 OF 20



Engineering Consultants  
Infrastructure • Land Development • Surveying

220 W. Congress, Suite 400  
Detroit, MI 48226  
Phone: (313) 967-4700  
Fax: (313) 967-4707

905 South Blvd. East  
Rochester Hills, MI 48307  
Phone: (248) 844-5400  
Fax: (248) 844-5404

10503 Clanton Dr., Suite 600  
Birmingham, MI 48116  
Phone: (810) 534-1400  
Fax: (810) 534-1402

www.sda-eng.com



NOTE: UTILITY INFORMATION ON THIS DRAWING MAY BE FROM INFORMATION DISCLOSED TO THIS FIRM BY THE VARIOUS UTILITY COMPANIES, CITY/COUNTY AGENCIES AND OTHER VARIOUS SOURCES. UNDERGROUND UTILITIES WHICH ARE ON THIS DRAWING ARE SHOWN AS LOCATED BY THE SURVEY. THEIR LOCATION, IF SHOWN UPON THIS SURVEY, ARE APPROXIMATED FROM FOUND PAINT MARKS/STAKES, ETC. AS LOCATED BY THIS FIRM. NO WARRANTY IS GIVEN AS TO THE COMPLETENESS OR ACCURACY THEREOF.

PRIOR TO CONSTRUCTION, ALL LOCATIONS AND PROPOSED IMPROVEMENTS SHALL BE VERIFIED IN THE FIELD. CALL MISS DIG.

COPYRIGHT © 2009 SPALDING DEDECKER ASSOCIATES, INC. ALL RIGHTS RESERVED. THE SUBJECT MATTER CONTAINED HEREON IS REPRODUCED WITHOUT WRITTEN PERMISSION OF SPALDING DEDECKER ASSOCIATES, INC.

**ROAD COMMISSION FOR OAKLAND COUNTY  
TENKEN & PARKDALE ROADS  
OVER STONY CREEK  
BRIDGE RECONSTRUCTION**

**GENERAL PLAN OF STRUCTURE  
TENKEN ROAD**

SECTION 2  
TOWN 3 NORTH RANGE 11 EAST  
CITY OF ROCHESTER HILLS  
OAKLAND COUNTY

NO.	DATE	REVISION

LAST	RECORD MEASUREMENTS ADDED TO DRAWING

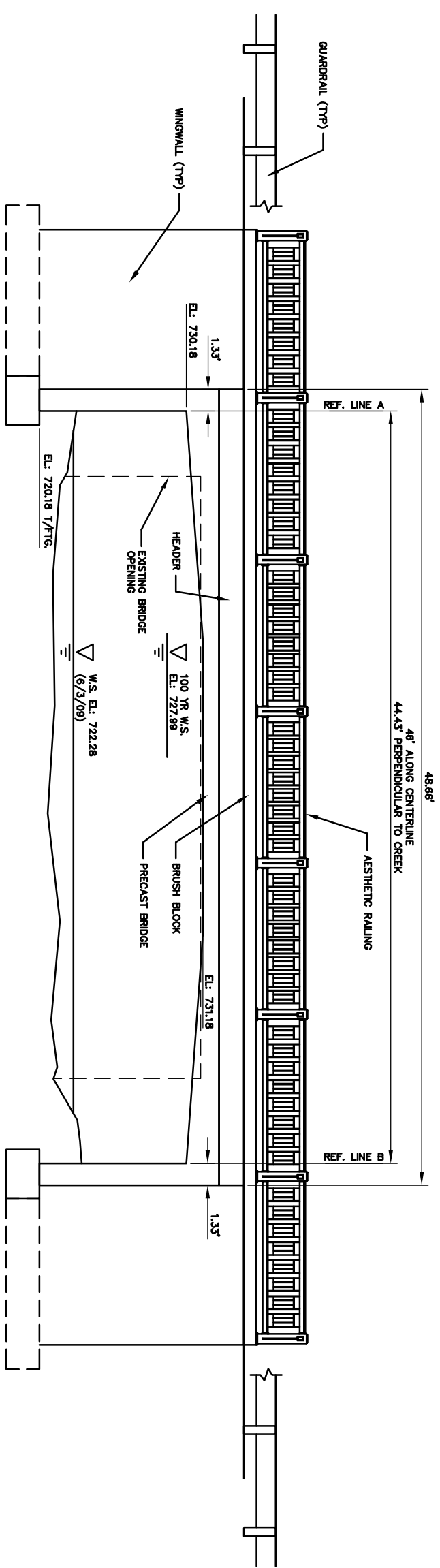
  

DATE	BY
9/3/09	SCW
9/3/09	DESIGNER
9/3/09	SCHEMATIC
9/3/09	WEL
9/3/09	PROJECT MANAGER
	DEPARTMENT MANAGER APPROVAL DATE

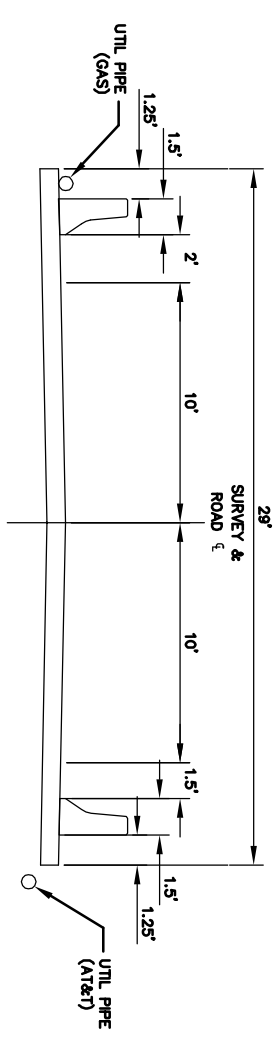
**VERTICAL SCALES  
BAR IS ONE INCH ON ORIGINAL DRAWING  
IF NOT ONE INCH ON THIS SHEET.**

PROJECT NO. R090006TS&L  
SHEET NO. 11 OF 20

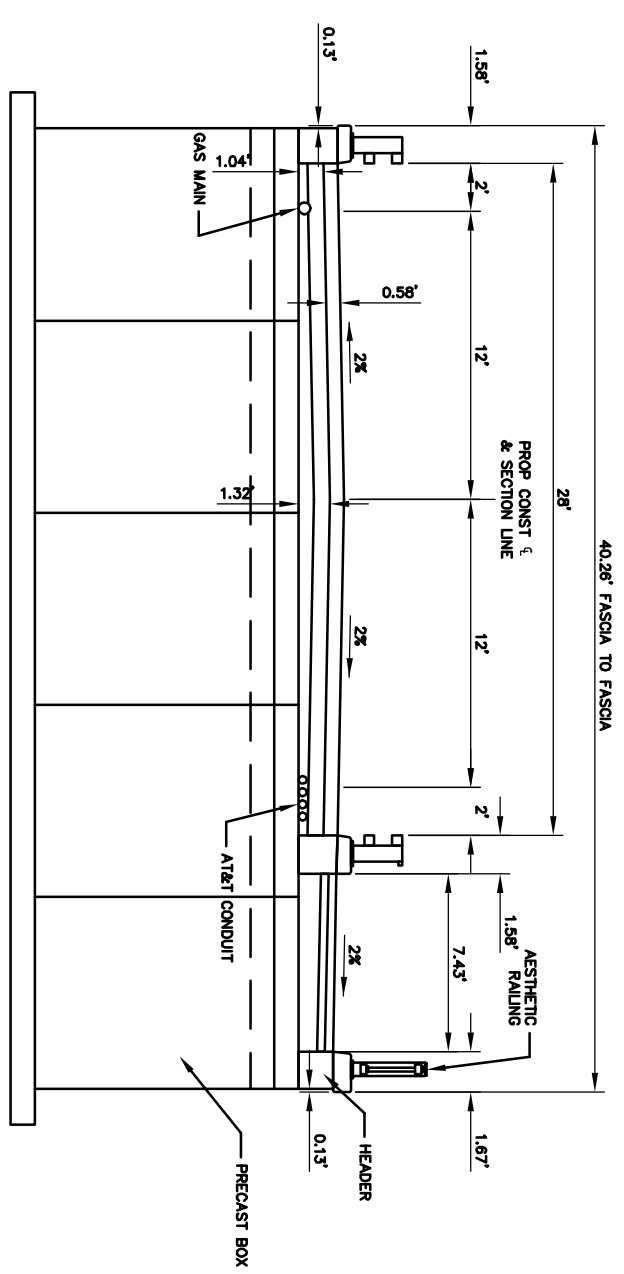
SCALE: 1" = 8'



**PROP BRIDGE ELEVATION**  
LOOKING UPSTREAM



**EXIST DECK CROSS SECTION**



**PROP DECK CROSS SECTION  
PRECAST 3-SIDED BOX**



Engineering Consultants

Infrastructure • Land Development • Surveying

220 W. Congress, Suite 400  
Detroit, MI 48226  
Phone: (313) 967-4700  
Fax: (313) 967-4707

905 South Blvd. East  
Rochester Hills, MI 48307  
Phone: (248) 844-5400  
Fax: (248) 844-5404

10503 Clanton Dr., Suite 600  
Birmingham, MI 48116  
Phone: (810) 534-1400  
Fax: (810) 534-1402

www.sda-eng.com



NOTE: UTILITY INFORMATION ON THIS DRAWING MAY BE FROM INFORMATION DISCLOSED TO THIS FIRM BY THE VARIOUS UTILITY COMPANIES, CITY/COUNTY AGENCIES AND OTHER VARIOUS SOURCES UNDERGOING UTILITIES WHICH ARE ON FILE WITH THE ENGINEER. THE ENGINEER HAS NOT VERIFIED THE LOCATION, DEPTH OR TYPE OF UTILITIES SHOWN ON THIS DRAWING. THE ENGINEER'S LIABILITY IS LIMITED TO THE ACCURACY OF THE INFORMATION PROVIDED BY THE CLIENT. THE ENGINEER DOES NOT WARRANT THE ACCURACY OF THE INFORMATION PROVIDED BY THE CLIENT. THE ENGINEER'S LIABILITY IS LIMITED TO THE ACCURACY OF THE INFORMATION PROVIDED BY THE CLIENT.

FOR THE CONSTRUCTION, ALL LOCATIONS AND DIMENSIONS OF PROPOSED IMPROVEMENTS SHALL BE VERIFIED IN THE FIELD. CALL MISS DIG.

CONTRACT © 2009 SPALDING DEDECKER ASSOCIATES, INC. ALL RIGHTS RESERVED. THE SUBJECT MATTER CONTAINED HEREON IS PROPRIETARY AND IS NOT TO BE USED OR REPRODUCED WITHOUT WRITTEN PERMISSION OF SPALDING DEDECKER ASSOCIATES, INC.

**ROAD COMMISSION FOR  
OAKLAND COUNTY  
TENKEN & PARKDALE ROADS  
OVER STONY CREEK  
BRIDGE RECONSTRUCTION**

GROSS SECTIONS  
TENKEN ROAD

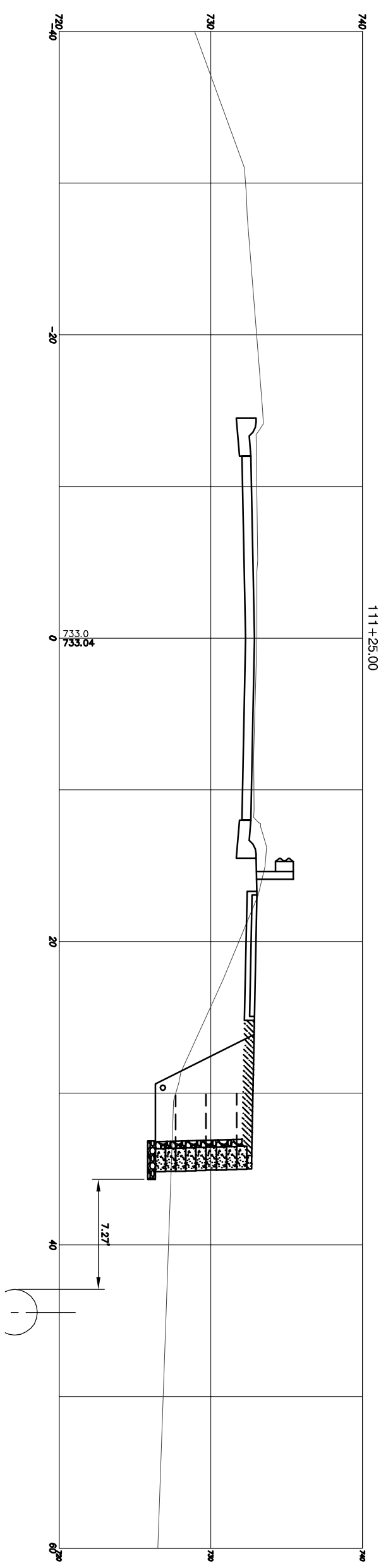
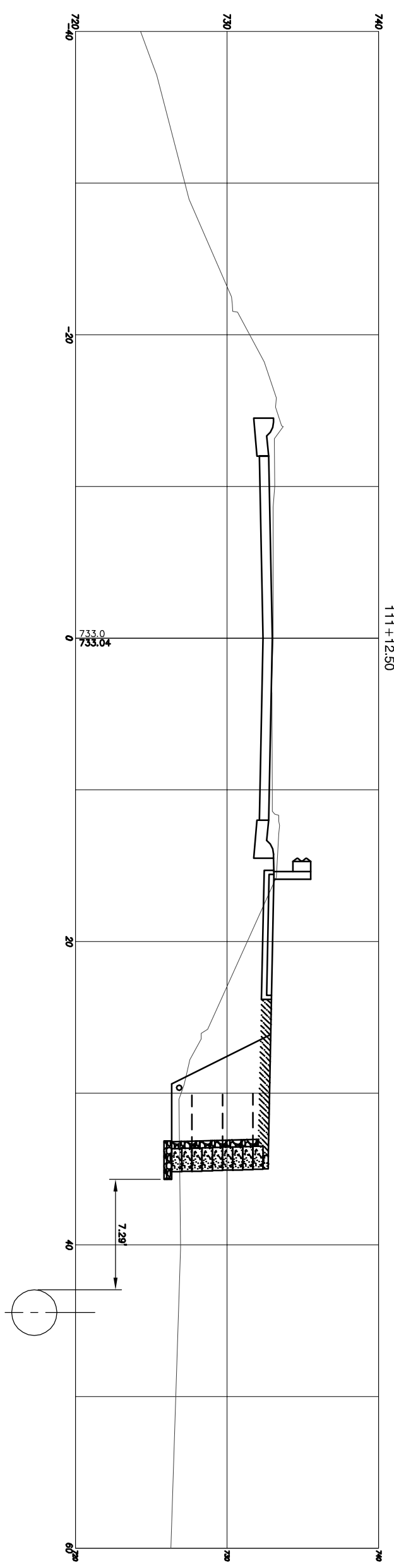
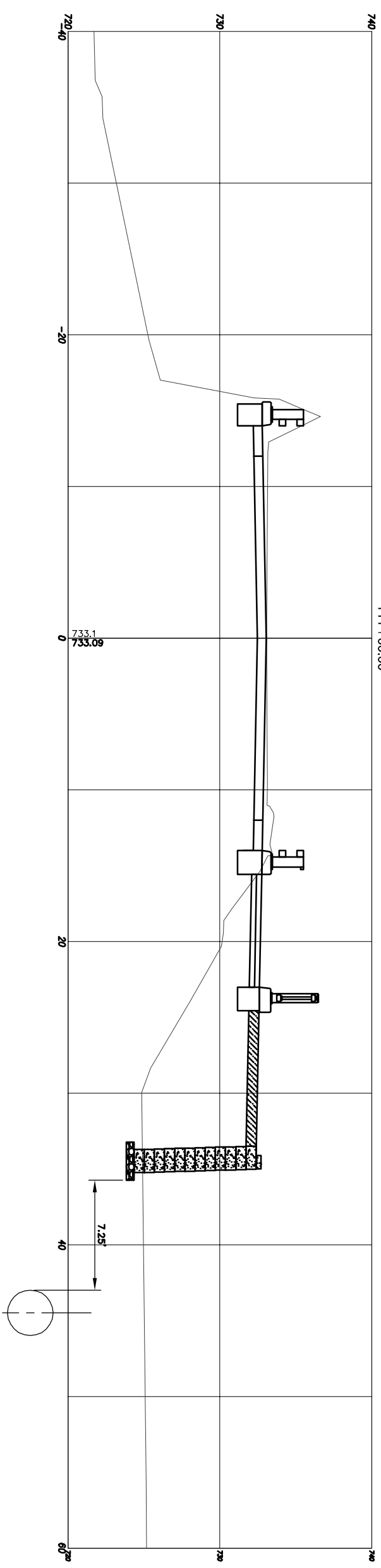
SECTION 2  
TOWN 3 NORTH RANGE 11 EAST  
CITY OF ROCHESTER HILLS  
OAKLAND COUNTY

NO.	DATE	REVISION

LAST	DATE	RECORD MEASUREMENTS ADDED TO DRAWING
DRASLER	9/3/09	
SCW	9/3/09	
DESIGNER	9/3/09	
SCW	9/3/09	
WEL	9/3/09	
PROJECT MANAGER		
WEL		
DEPARTMENT MANAGER APPROVAL DATE		
C.I.G.		

**VERTICAL SCALES**  
**BAR IS ONE INCH ON ORIGINAL DRAWING**  
**F NOT ONE INCH ON THIS SHEET.**  
**FOR MOST SCALES DRAWING NOT TO SCALE**

PROJECT NO. RB08006DET  
SHEET NO. 49293  
SCALE: 1" = 4'





Engineering Consultants

Infrastructure • Land Development • Surveying

220 W. Congress, Suite 400  
 Detroit, MI 48226  
 Phone: (313) 967-4700  
 Fax: (313) 967-4707

905 South Blvd. East  
 Rochester Hills, MI 48307  
 Phone: (248) 844-5400  
 Fax: (248) 844-5404

10503 Clanton Dr., Suite 600  
 Brighton, MI 48116  
 Phone: (810) 534-1400  
 Fax: (810) 534-1402

www.sda-eng.com



NOTE: UTILITY INFORMATION ON THIS DRAWING MAY BE FROM INFORMATION DISCLOSED TO THIS FIRM BY THE VARIOUS UTILITY COMPANIES, CITY/COUNTY AGENCIES AND OTHER VARIOUS SOURCES. UNDERGROUND UTILITIES WHICH ARE ON THIS DRAWING ARE SHOWN AS LOCATED UPON A UTILITY COMPANY'S PUBLISHED PLANS. THEIR LOCATION, IF SHOWN UPON THIS SURVEY, ARE APPROXIMATED FROM FOUND PAINT MARKS/STAKES, ETC. AS LOCATED BY THIS FIRM. THIS INFORMATION IS NOT TO BE USED AS A GUARANTEE IS GIVEN AS TO THE COMPLETENESS OR ACCURACY THEREOF.

PRIOR TO CONSTRUCTION, ALL LOCATIONS AND DEPTHS OF EXISTING UTILITIES WITHIN THE PROPOSED IMPROVEMENTS SHALL BE VERIFIED IN THE FIELD. CALL MISS DIG.

COPYRIGHT © 2009 SPALDING DEDECKER ASSOCIATES, INC. ALL RIGHTS RESERVED. THE SUBJECT MATTER CONTAINED HEREON IS REPRODUCED WITHOUT WRITTEN PERMISSION OF SPALDING DEDECKER ASSOCIATES, INC.

**ROAD COMMISSION FOR OAKLAND COUNTY  
 TENKEN & PARKDALE ROADS  
 OVER STONY CREEK  
 BRIDGE RECONSTRUCTION  
 CROSS SECTIONS  
 TENKEN ROAD**

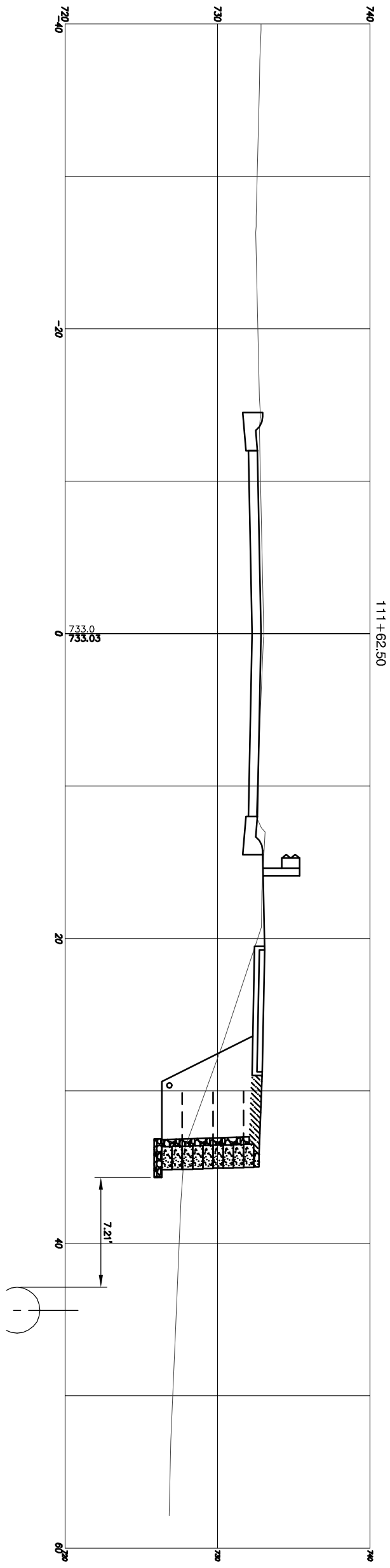
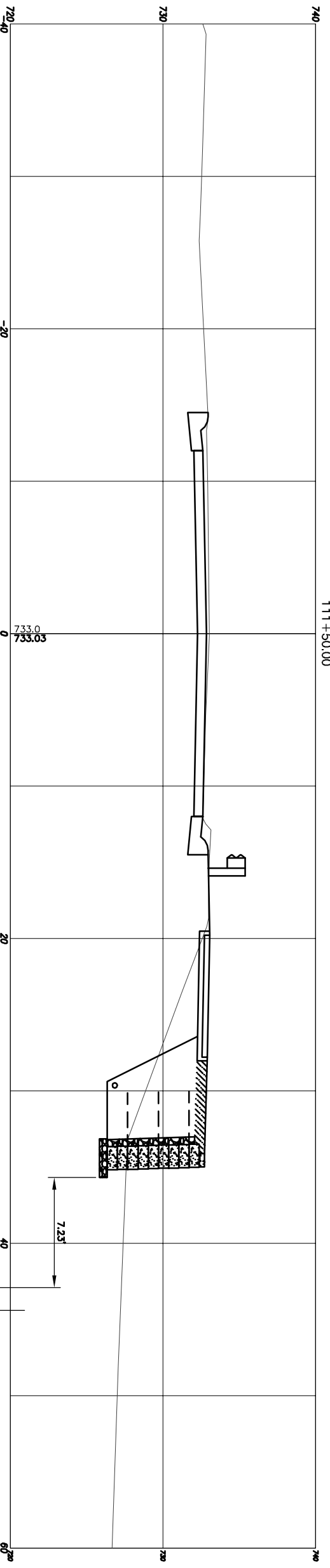
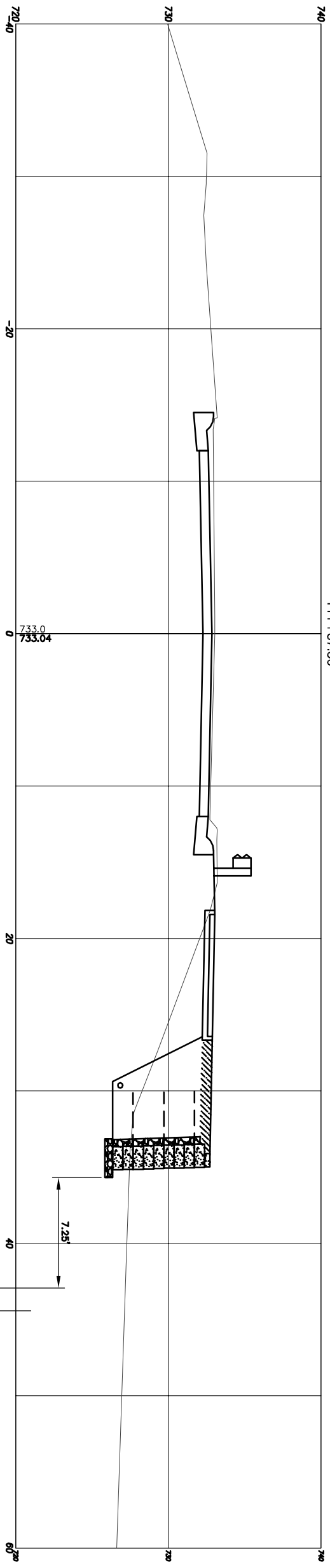
SECTION 2  
 TOWN 3 NORTH RANGE 11 EAST  
 CITY OF ROCHESTER HILLS  
 OAKLAND COUNTY

NO.	DATE	REVISION

LAST	RECORD MEASUREMENTS ADDED TO DRAWING
DATE	DATE
9/3/09	9/3/09
SCW	DESIGNER
9/3/09	9/3/09
SCW	DESIGNER
9/3/09	9/3/09
WEL	PROJECT MANAGER
9/3/09	9/3/09
WEL	PROJECT MANAGER
	DEPARTMENT MANAGER APPROVAL DATE

**VERTICAL CURVES**  
 BAR IS ONE INCH ON ORIGINAL DRAWING  
 F NOT ONE INCH ON THIS SHEET.  
 HORIZONTAL CURVES  
 BAR IS ONE INCH ON ORIGINAL DRAWING  
 F NOT ONE INCH ON THIS SHEET.

PROJECT NO. RB08006DET  
 SHEET NO. 49293  
 SCALE: 1" = 4'  
 # OF #





Engineering Consultants

Infrastructure • Land Development • Surveying

220 W. Congress, Suite 400  
Detroit, MI 48226  
Phone: (313) 967-4700  
Fax: (313) 967-4707

905 South Blvd. East  
Rochester Hills, MI 48307  
Phone: (248) 844-5400  
Fax: (248) 844-5404

10503 Clanton Dr., Suite 600  
Birmingham, MI 48116  
Phone: (810) 534-1400  
Fax: (810) 534-1402

www.sda-eng.com



NOTE: UTILITY INFORMATION ON THIS DRAWING MAY BE FROM INFORMATION DISCLOSED TO THIS FIRM BY THE VARIOUS UTILITY COMPANIES, CITY/COUNTY AGENCIES AND OTHER VARIOUS SOURCES. UNDERGROUND UTILITIES WHICH ARE ON THIS DRAWING ARE SHOWN AS APPROXIMATE LOCATIONS. THE LOCATION, DEPTH, SIZE AND TYPE OF UTILITIES SHOWN ON THIS DRAWING ARE APPROXIMATED FROM FOUND PAINT MARKS/STAKES, ETC. AS LOCATED BY THIS FIRM. NO WARRANTY IS GIVEN AS TO THE COMPLETENESS OR ACCURACY THEREOF.

PRIOR TO CONSTRUCTION, ALL LOCATIONS AND DEPTHS OF EXISTING UTILITIES WITHIN THE PROPOSED IMPROVEMENTS) SHALL BE VERIFIED IN THE FIELD. CALL MISS DIG.

COPYRIGHT © 2009 SPALDING DEDECKER ASSOCIATES, INC. ALL RIGHTS RESERVED. THE SUBJECT MATTER CONTAINED HEREON IS PROPRIETARY AND IS NOT TO BE USED OR REPRODUCED WITHOUT WRITTEN PERMISSION OF SPALDING DEDECKER ASSOCIATES, INC.

**ROAD COMMISSION FOR  
OAKLAND COUNTY  
TENKEN & PARKDALE ROADS  
OVER STONY CREEK  
BRIDGE RECONSTRUCTION**

**GROSS SECTIONS  
TENKEN ROAD**

SECTION 2  
TOWN 3 NORTH RANGE 11 EAST  
CITY OF ROCHESTER HILLS  
OAKLAND COUNTY

NO.	DATE	REVISION

LAST		RECORD MEASUREMENTS ADDED TO DRAWING
DESIGNER	DATE	
SCHEMATIC	DATE	
DESIGNER	DATE	
WEL	DATE	
PROJECT MANAGER	DATE	
DEPARTMENT MANAGER APPROVAL	DATE	
C.I.G.		

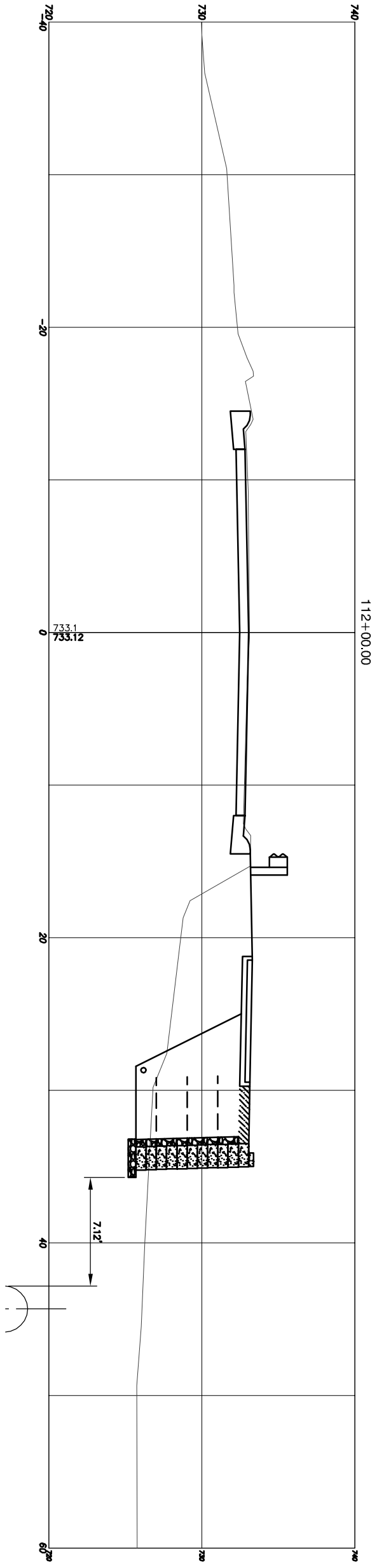
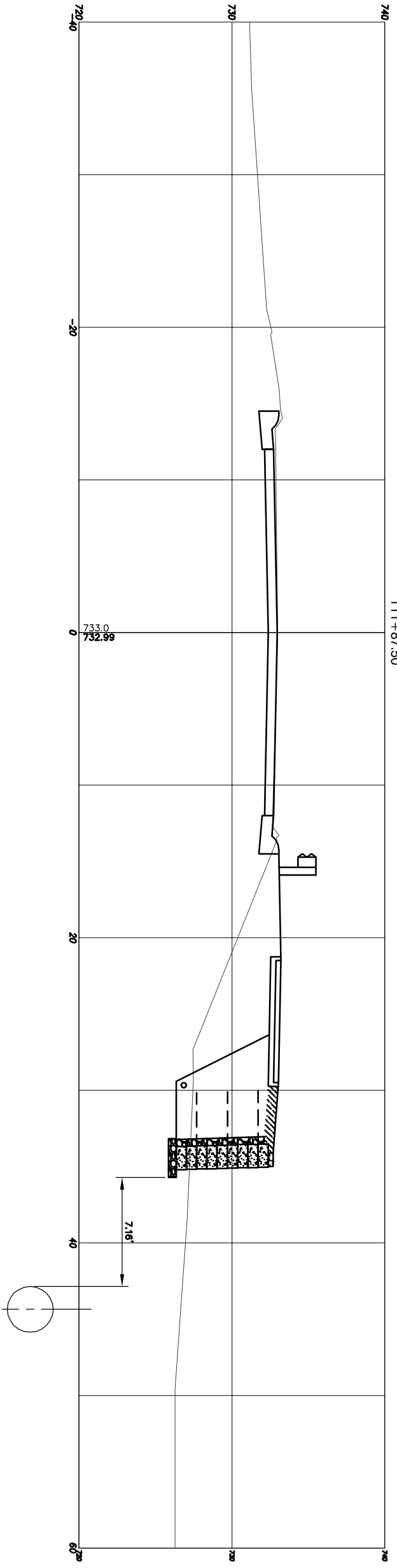
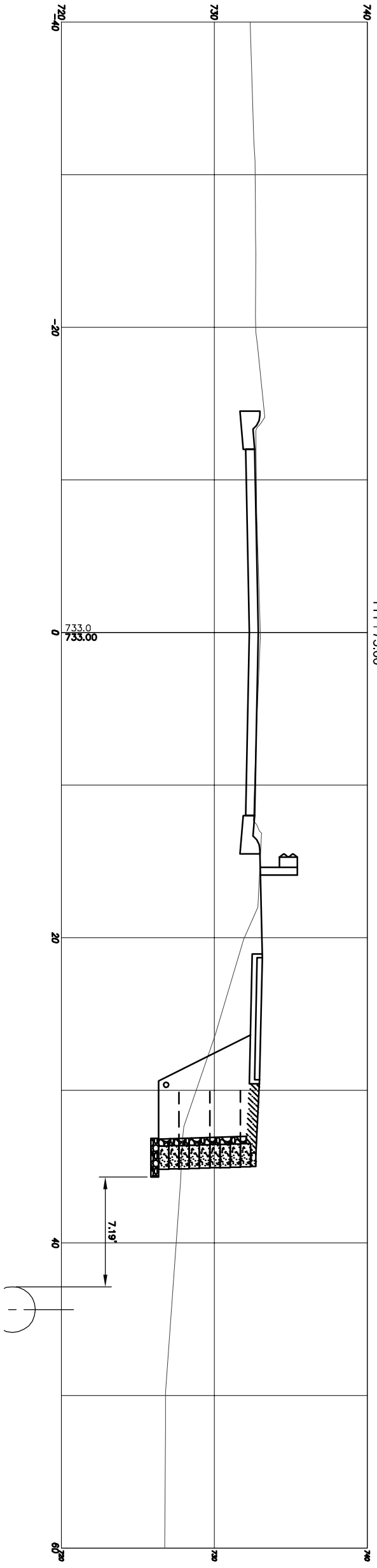
**VERTICAL SCALES**  
**ARE NOT ONE INCH ON ORIGINAL DRAWING**

**HORIZONTAL SCALES**  
**ARE ONE INCH ON ORIGINAL DRAWING**

PROJECT NO. RB08006DET

SHEET NO. 49293

SCALE: 1" = 4'





Engineering Consultants

Infrastructure • Land Development • Surveying

220 W. Congress, Suite 400  
 Detroit, MI 48226  
 Phone: (313) 967-4700  
 Fax: (313) 967-4707

905 South Blvd. East  
 Rochester Hills, MI 48307  
 Phone: (248) 844-5400  
 Fax: (248) 844-5404

10503 Clanton Dr., Suite 600  
 Brighton, MI 48116  
 Phone: (810) 534-1400  
 Fax: (810) 534-1402

www.sda-eng.com



NOTE: UTILITY INFORMATION ON THIS DRAWING MAY BE FROM INFORMATION DISCLOSED TO THIS FIRM BY THE VARIOUS UTILITY COMPANIES, CITY/COUNTY AGENCIES AND OTHER VARIOUS SOURCES. UNDERGROUND UTILITIES WHICH ARE ON THIS DRAWING ARE SHOWN AS APPROXIMATE LOCATIONS. UTILITY COMPANIES PUBLISHED PLANS, THEIR LOCATION, IF SHOWN UPON THIS SURVEY, ARE APPROXIMATED FROM FOUND PAINT MARKS/STAKES, ETC. AS LOCATED BY THIS FIRM. THIS FIRM DOES NOT GUARANTEE THE ACCURACY OR COMPLETENESS OF THIS INFORMATION.

FOR THE CONSTRUCTION, ALL LOCATIONS AND DIMENSIONS OF THE STRUCTURES AND PROPOSED IMPROVEMENTS SHALL BE VERIFIED IN THE FIELD. CALL MISS DIG.

COPYRIGHT © 2009 SPALDING DEDECKER ASSOCIATES, INC. ALL RIGHTS RESERVED. THE SUBJECT MATTER CONTAINED THEREIN IS REPRODUCED WITHOUT WRITTEN PERMISSION OF SPALDING DEDECKER ASSOCIATES, INC.

**ROAD COMMISSION FOR  
 OAKLAND COUNTY  
 TENKEN & PARKDALE ROADS  
 OVER STONY CREEK  
 BRIDGE RECONSTRUCTION**

**CROSS SECTIONS  
 TENKEN ROAD**

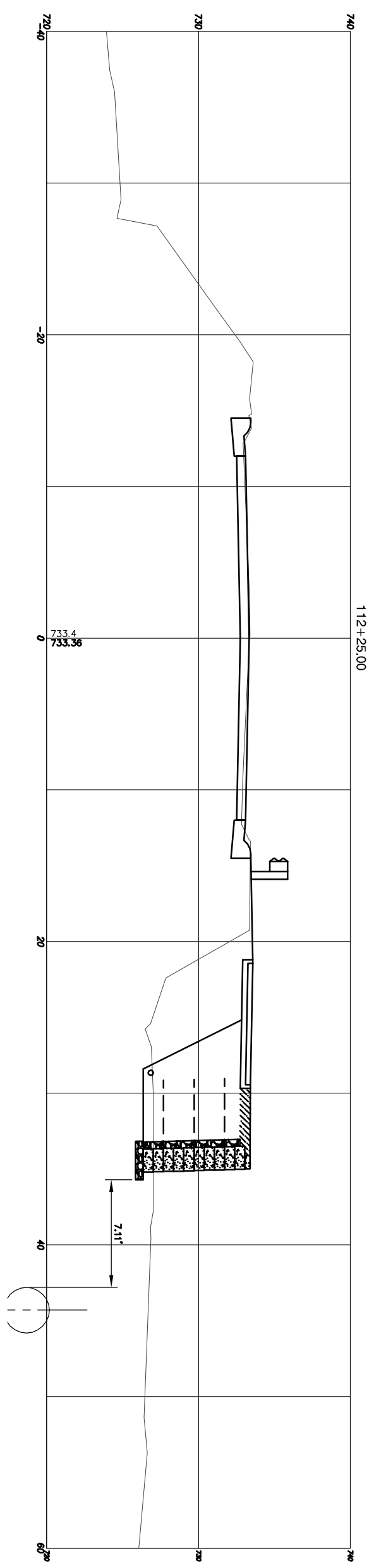
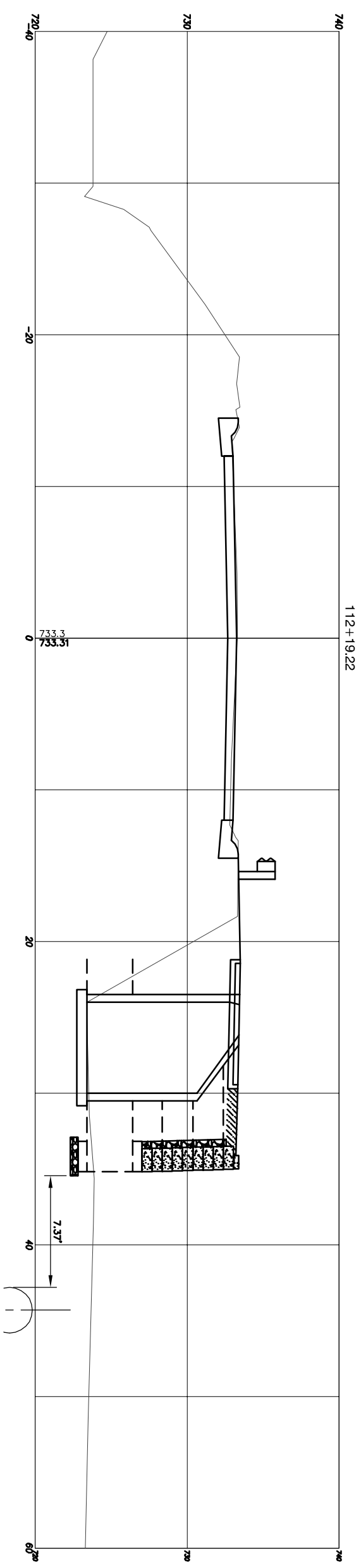
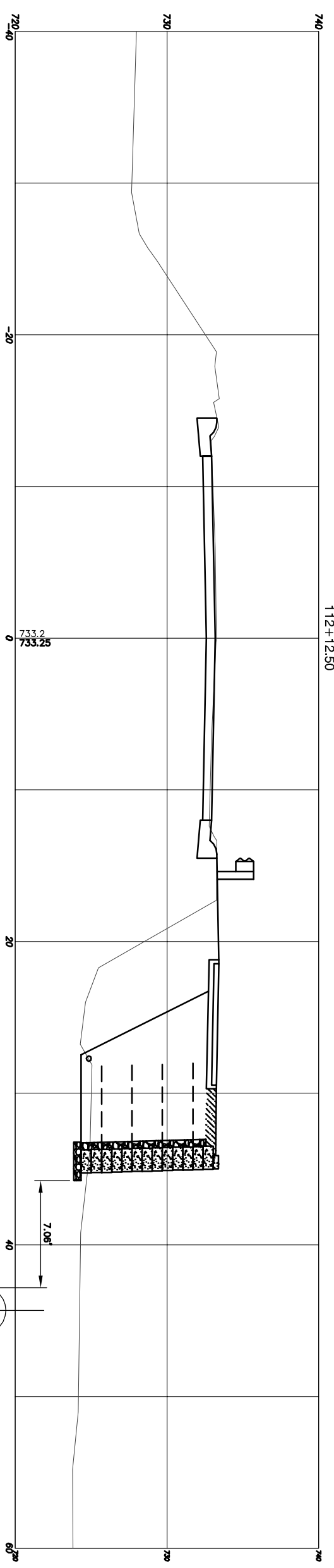
SECTION 2  
 TOWN 3 NORTH RANGE 11 EAST  
 CITY OF ROCHESTER HILLS  
 OAKLAND COUNTY

NO.	DATE	REVISION

LAST	RECORD MEASUREMENTS ADDED TO DRAWING
DESIGNER	DATE
SCHEMATIC	DATE
WEL	DATE
PROJECT MANAGER	DATE
DEPARTMENT MANAGER APPROVAL	DATE
C.I.G.	

**VERTICAL SLOPES**  
**BAR IS ONE INCH ON ORIGINAL DRAWING**  
**IF NOT ONE INCH ON THIS SHEET.**  
**FOR ALL SLOPES DRAWING AT 1/8" = 1'**

PROJECT NO. RB08006DET  
 SHEET NO. 49293  
 SCALE: 1" = 4'  
 # OF #





Engineering Consultants

Infrastructure • Land Development • Surveying

220 W. Congress, Suite 400  
Detroit, MI 48226  
Phone: (313) 967-4700  
Fax: (313) 967-4707

905 South Blvd. East  
Rochester Hills, MI 48307  
Phone: (248) 844-5400  
Fax: (248) 844-5404

10503 Clanton Dr., Suite 600  
Birmingham, MI 48116  
Phone: (810) 534-1400  
Fax: (810) 534-1402

www.sda-eng.com



NOTE: UTILITY INFORMATION ON THIS DRAWING MAY BE FROM INFORMATION DISCLOSED TO THIS CITY/COUNTY AGENCIES AND OTHER VARIOUS SOURCES UNDERGROUND UTILITIES WHICH ARE ON FILE WITH THE CITY/COUNTY ENGINEER. ANY INFORMATION ON A UTILITY COMPANY'S FINISHED PLANS, THEIR LOCATION, IF SHOWN UPON THIS SURVEY, ARE APPROXIMATED FROM FOUND PAINT MARKS/STAKES ETC. AS LOCATED BY THIS FIRM. NO WARRANTY IS GIVEN AS TO THE COMPLETENESS OR ACCURACY THEREOF.

PRIOR TO CONSTRUCTION, ALL LOCATIONS AND PROPOSED IMPROVEMENTS SHALL BE VERIFIED IN THE FIELD. CALL MISS DIG.

COPYRIGHT © 2009 SPALDING DEDECKER ASSOCIATES, INC. ALL RIGHTS RESERVED. THE SUBJECT MATTER CONTAINED HEREON IS REPRODUCED WITHOUT WRITTEN PERMISSION OF SPALDING DEDECKER ASSOCIATES, INC.

**ROAD COMMISSION FOR  
OAKLAND COUNTY  
TENKEN & PARKDALE ROADS  
OVER STONY CREEK  
BRIDGE RECONSTRUCTION**

CROSS SECTIONS  
TENKEN ROAD

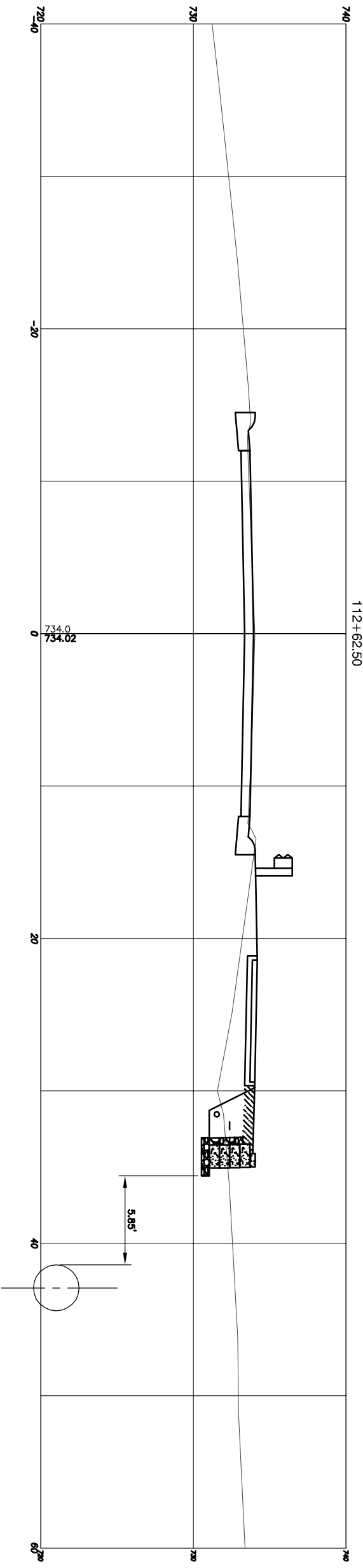
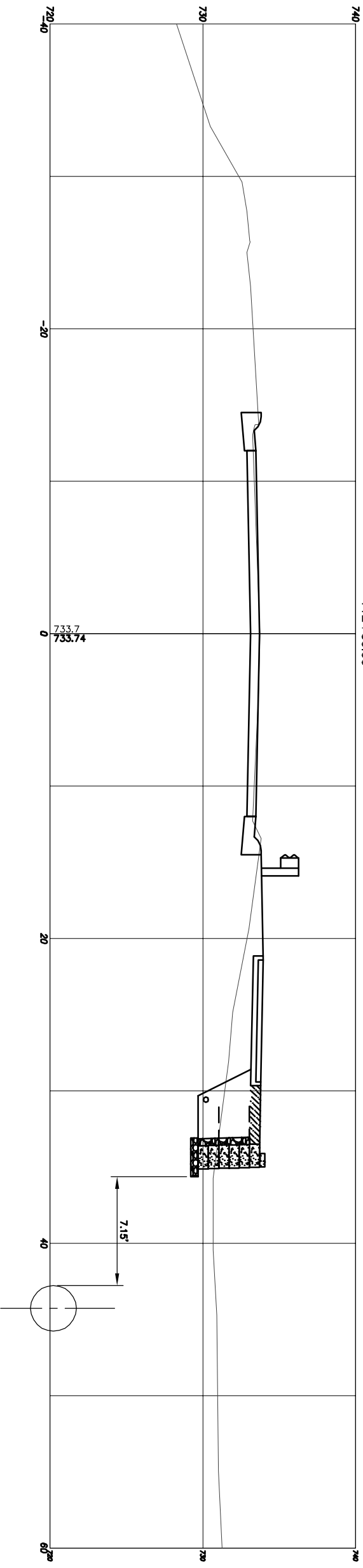
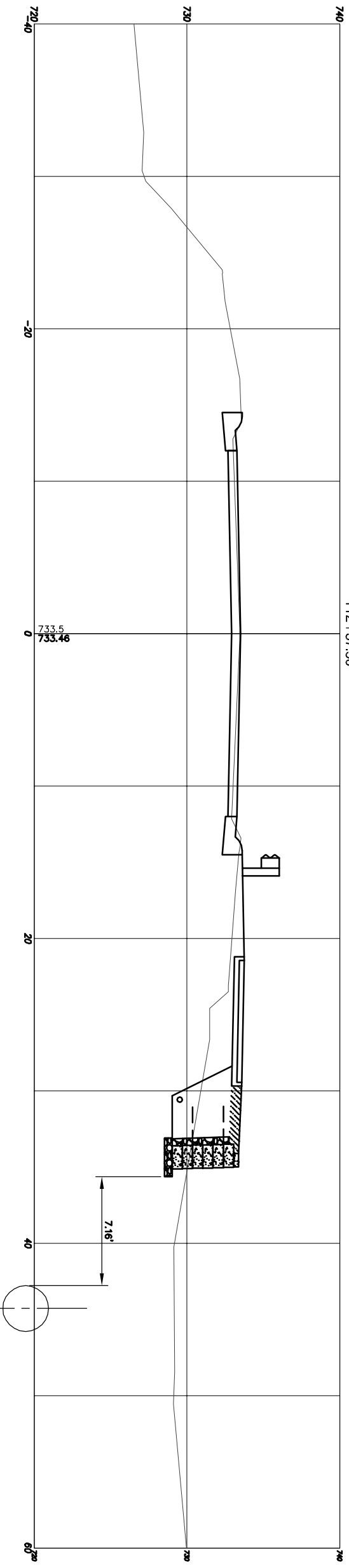
SECTION 2  
TOWN 3 NORTH RANGE 11 EAST  
CITY OF ROCHESTER HILLS  
OAKLAND COUNTY

NO.	DATE	REVISION

LAST	RECORD MEASUREMENTS ADDED TO DRAWING
DESIGNER	DATE
SCHEMATIC	DATE
DESIGNED	DATE
WEL	DATE
PROJECT MANAGER	DATE
DEPARTMENT MANAGER APPROVAL	DATE
C.I.G.	DATE

**VERTICAL CURVES**  
BAR IS ONE INCH ON ORIGINAL DRAWING  
IF NOT ONE INCH ON THIS SHEET.  
FOR MOST SCALES DRAWING WILL

PROJECT NO. RB08006DET  
SHEET NO. 49293  
SCALE: 1" = 4'  
# OF #





Engineering Consultants  
Infrastructure • Land Development • Surveying

220 W. Congress, Suite 400  
Detroit, MI 48226  
Phone: (313) 967-4700  
Fax: (313) 967-4707

905 South Blvd. East  
Rochester Hills, MI 48307  
Phone: (248) 844-5400  
Fax: (248) 844-5404

10503 Clanton Dr., Suite 600  
Birmingham, MI 48116  
Phone: (810) 534-1400  
Fax: (810) 534-1402

www.sda-eng.com



NOTE: UTILITY INFORMATION ON THIS DRAWING MAY BE FROM INFORMATION DISCLOSED TO THIS FIRM BY THE VARIOUS UTILITY COMPANIES, CITY/COUNTY AGENCIES AND OTHER VARIOUS SOURCES. UNDERGROUND UTILITIES WHICH ARE NOT SHOWN ON THIS DRAWING ARE THE PROPERTY OF THE UTILITY COMPANIES. PLANS, THEIR LOCATION, IF SHOWN UPON THIS SURVEY, ARE APPROXIMATED FROM FOUND PAINT MARKS/STAKES, ETC. AS LOCATED BY THIS FIRM. NO WARRANTY OR GUARANTEE IS GIVEN AS TO THE COMPLETENESS OR ACCURACY THEREOF.

PRIOR TO CONSTRUCTION, ALL LOCATIONS AND DIMENSIONS OF EXISTING UTILITIES WITH PROPOSED IMPROVEMENTS SHALL BE VERIFIED IN THE FIELD. CALL MISS DIG.

CONCEPT © 2009 SPALDING DEDECKER ASSOCIATES, INC. ALL RIGHTS RESERVED. THE SUBJECT MATTER CONTAINED HEREON IS REPRODUCED WITHOUT WRITTEN PERMISSION OF SPALDING DEDECKER ASSOCIATES, INC.

**ROAD COMMISSION FOR  
OAKLAND COUNTY  
TENKEN & PARKDALE ROADS  
OVER STONY CREEK  
BRIDGE RECONSTRUCTION**

CROSS SECTIONS  
TENKEN ROAD

SECTION 2  
TOWN 3 NORTH RANGE 11 EAST  
CITY OF ROCHESTER HILLS  
OAKLAND COUNTY

NO.	DATE	REVISION

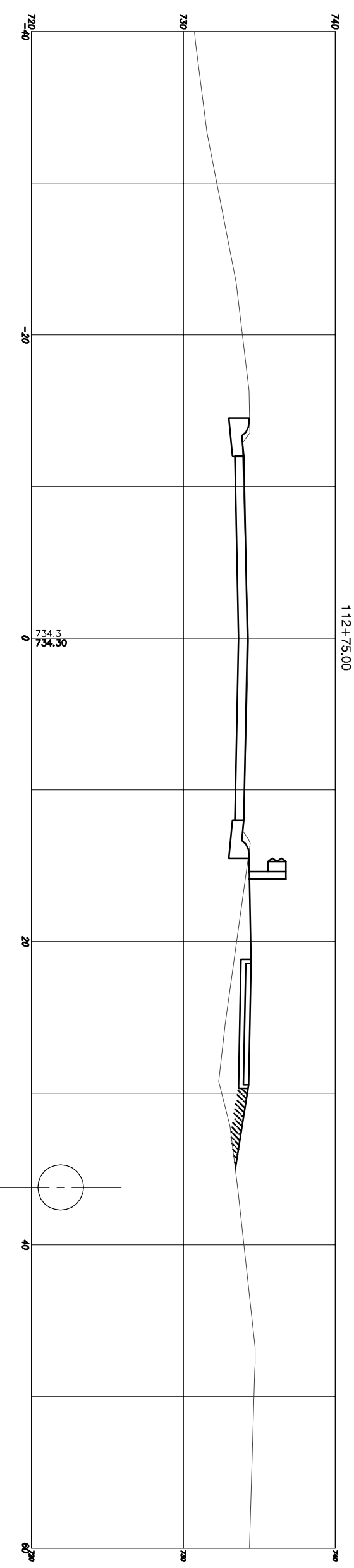
LAST RECORD MEASUREMENTS ADDED TO DRAWING

DATE	BY
9/3/09	SCW
9/3/09	DESIGNER
9/3/09	CHECKED
9/3/09	WEL
	PROJECT MANAGER
	DEPARTMENT MANAGER APPROVAL DATE

**VERIFY SCALES**  
**BAR IS ONE INCH ON ORIGINAL DRAWING**  
**IF NOT ONE INCH ON THIS SHEET.**  
**DO NOT SCALE DRAWING**

PROJECT NO. RB08006DET  
SHEET NO. 1

SCALE: 1" = 4'  
# OF #



112+75.00

734.3  
734.36  
0