



P:\PROJECTS\2016-0026 EMAGINE ROCHESTER HILLS\AUTOCAD\PRELIMINARY SITE PLAN\2016-0026 C6 AERIAL.DWG

CES
 CIVIL ENGINEERING SOLUTIONS, Inc.
 1150 CORPORATE OFFICE DR.
 SUITE 210
 MILFORD, MI 48381
 PH: (248)264-6906
 FAX: (810)448-5903
 izawada@civilengineeringsolutions.us

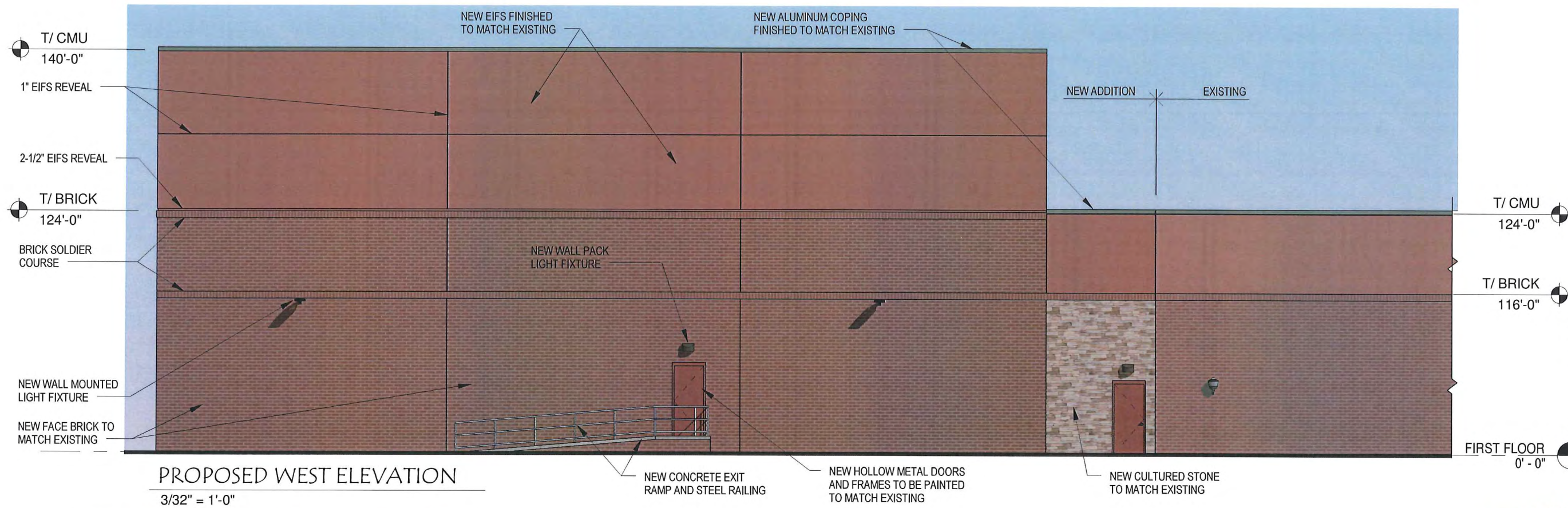
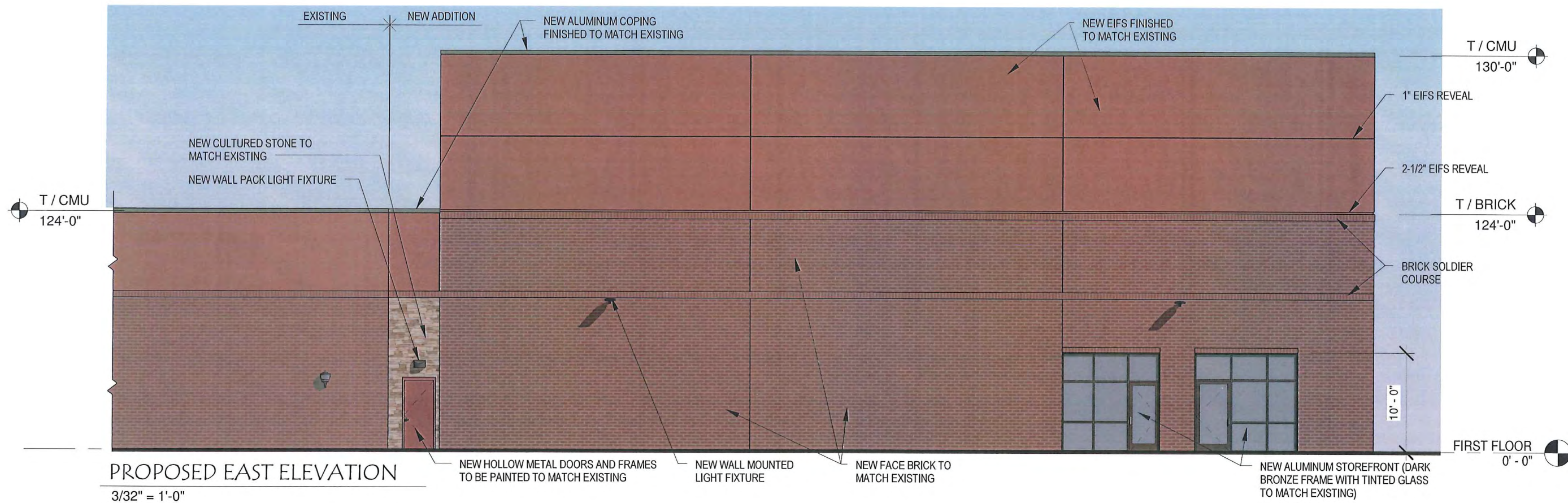
811
 Know what's below.
 Call before you dig.

ROCHESTER HILLS
 EMAGINE THEATER - BUILDING ADDITION
 AERIAL

NO.	DATE	SUBMITTAL	NO.	DATE	REVISION
1	2017-03-08	PER FIRE DEPT COMMENTS	8	-	-
2	2017-03-20	PER CITY COMMENTS	9	-	-
3	-	-	10	-	-
4	-	-	11	-	-
5	-	-	12	-	-
6	-	-	13	-	-
7	-	-	14	-	-

PROJECT NO.: 2016-0026	SCALE: 1"=40'
DRAWING NO.: -	DATE: 01-28-2017
DRAWN BY: WLH	DATE: 01-30-2017
CHECKED BY: L ZAWADA	
SECTION 31 TOWN 1 NORTH RANGE 11 EAST	
CITY/TOWN: ROCHESTER HILLS	OAKLAND COUNTY, MI

SHEET NO.
C6

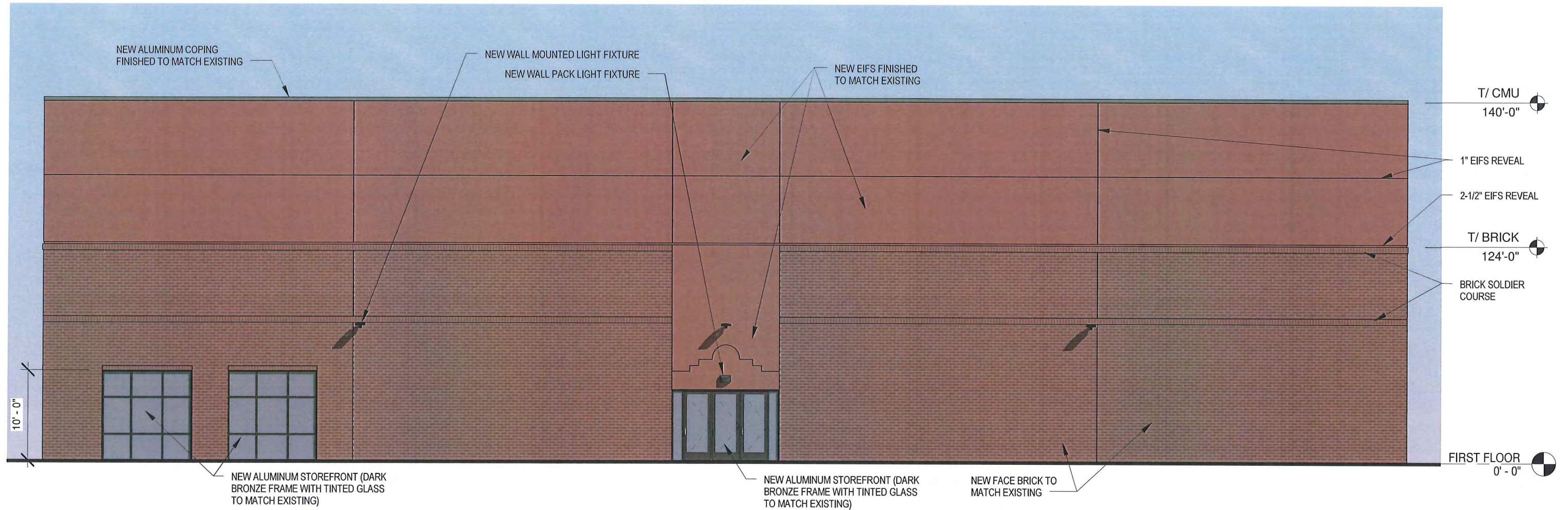


STATE OF MICHIGAN
 KEVIN COPPEDGE ARCHITECT
 No. 47978
 LICENSED ARCHITECT
 2-22-17

COLOR EXTERIOR ELEVATIONS

ROCHESTER HILLS EXPANSION

STUDIO THREE DESIGN
 Architecture • Interior Design
 8604 Allisonville Road
 Suite 330
 Indianapolis, IN 46250
 Phone: (317) 595.1000
 Fax: (317) 572.1236



PROPOSED NORTH ELEVATION

3/32" = 1'-0"



COLOR EXTERIOR ELEVATIONS

ROCHESTER HILLS EXPANSION


STUDIO THREE DESIGN
 Architecture • Interior Design
 8604 Allisonville Road
 Suite 330
 Indianapolis, IN 46250
 Phone: (317) 595.1000
 Fax: (317) 572.1236