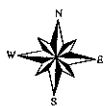
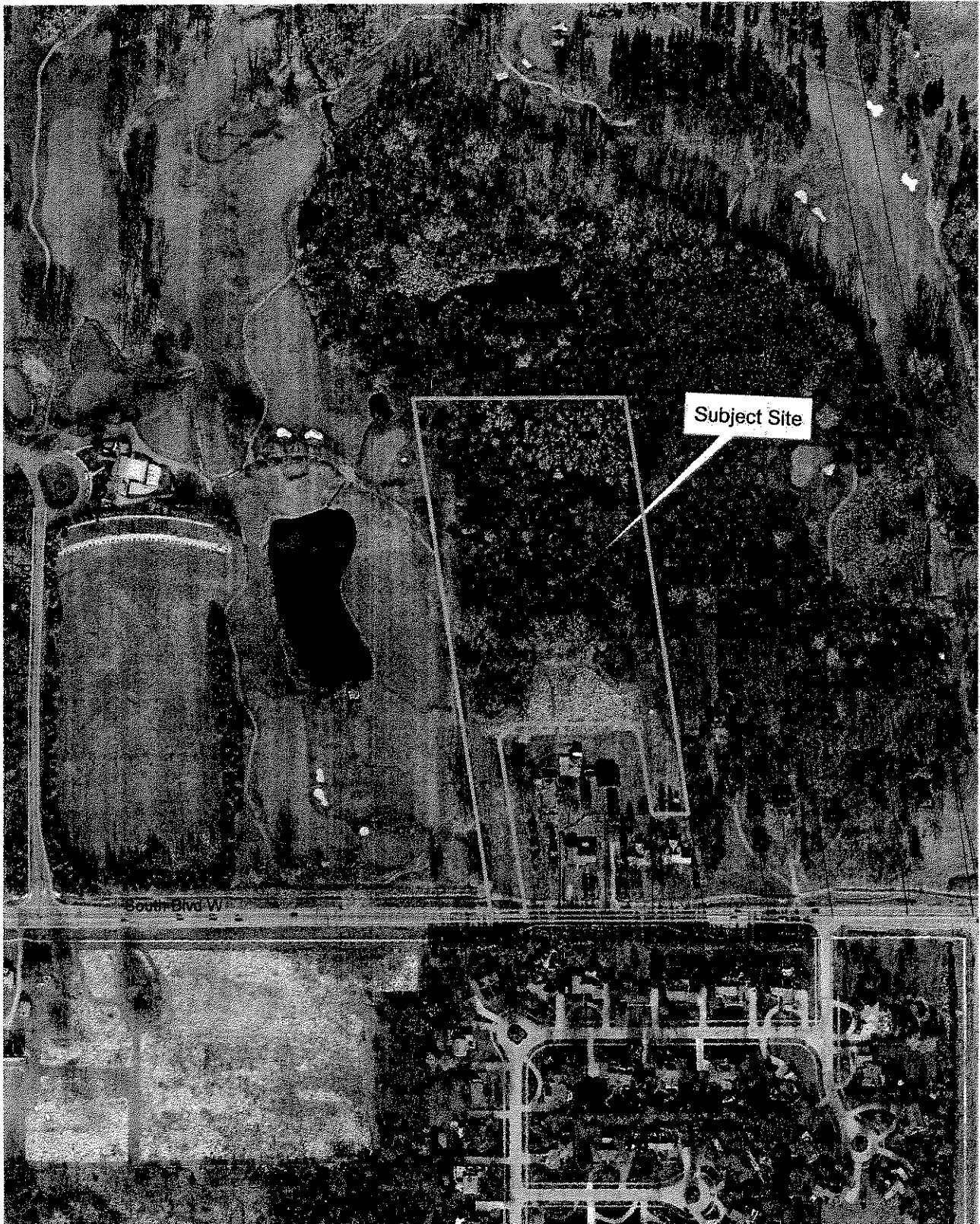


Location Map South Boulevard Property



Legend

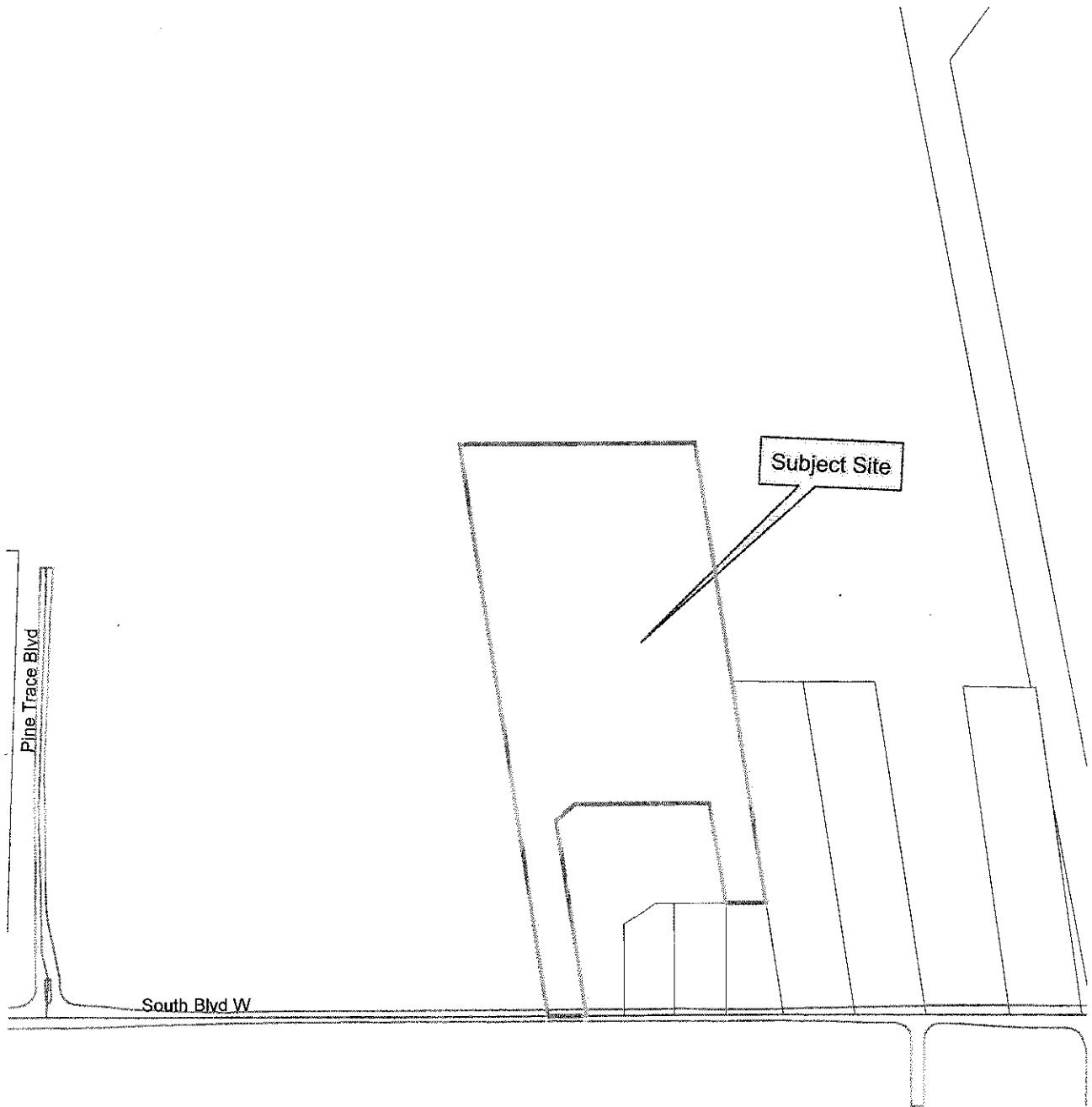
	TaxParcel Lines
	Lot Lines
	Waterway
	Highway
	Other
	Dark Area_1
	Dark Area_2
	Dark Area_3

Aerial photographs as of April 2010
TaxParcel lines were obtained on 1/2/12 from Oakland County.
Although the information provided by this map is believed to be reliable, its accuracy is not warranted in any way. The City of Rochester Hills assumes no liability for any claims arising from the use of this map.

7-5-11

1 inch = 343 feet

Location Map South Boulevard Property



Legend
Thick Dashed Line: Subject Site
Thin Solid Line: Other Parcels
Thin Dotted Line: Property Boundary

Aerial photographs as of April 2010
Tax Parcel Lines were obtained on 1/2/12 from Oakland County.
Although the information provided by this map is believed to be reliable, its accuracy is not warranted in any way. The City of Rochester Hills assumes no liability for any claims arising from the use of this map.

7-5-11

1 inch = 343 feet