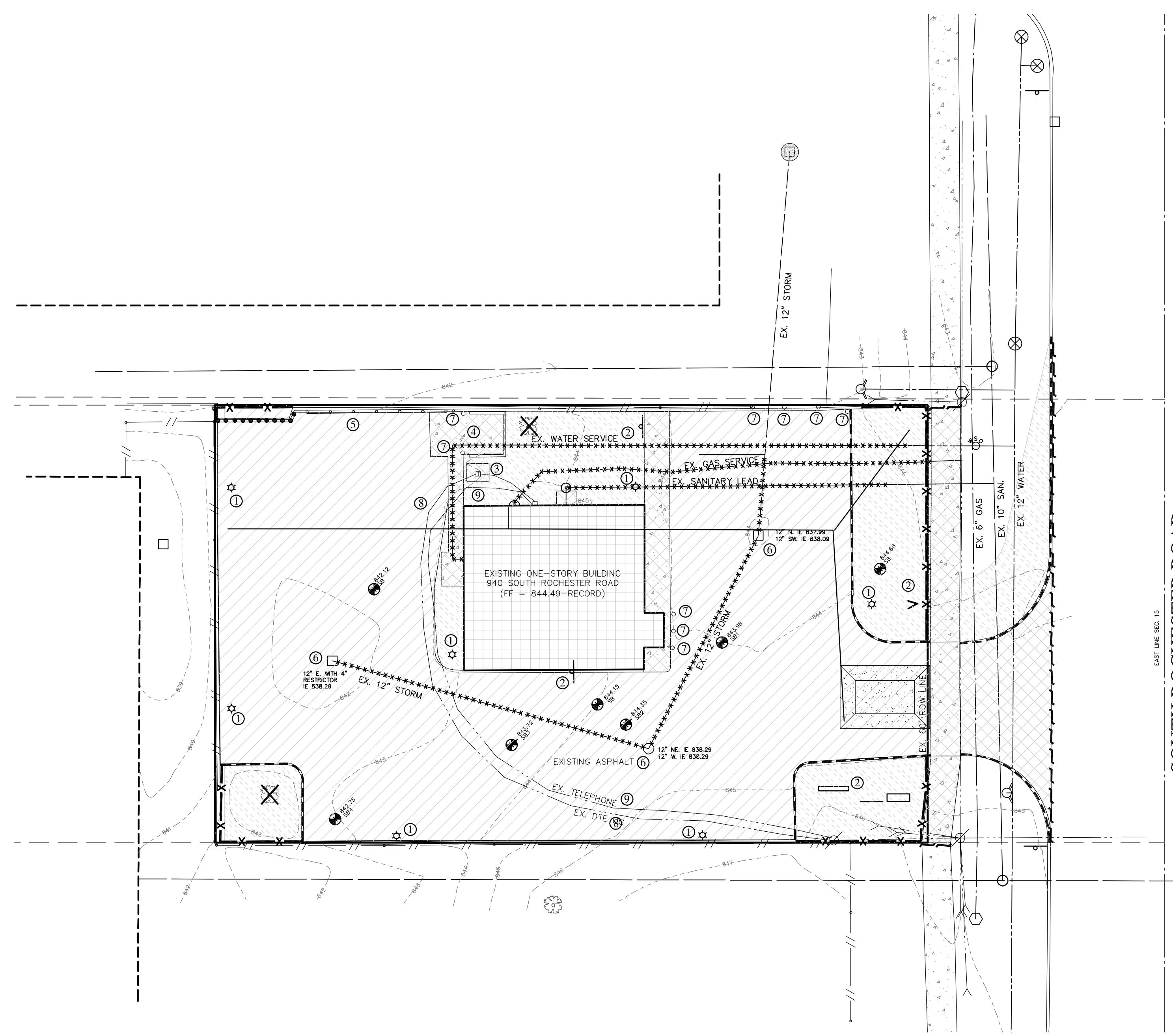
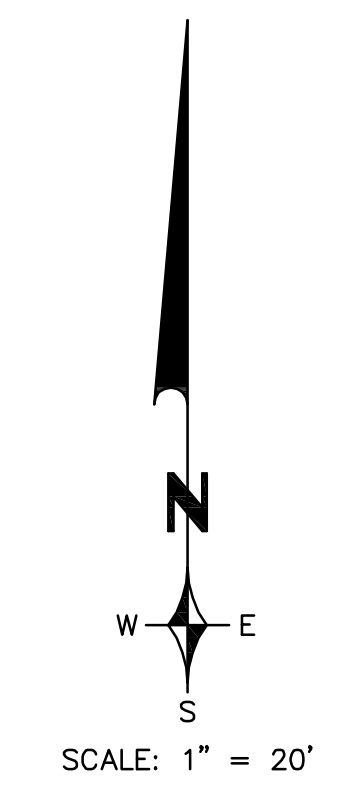


EXISTING LEGEND

- MANHOLE
- CATCH BASIN
- ⊠ INLET
- ⊙ CLEANOUT
- △ END SECTION
- ◇ ROOF DRAIN
- ⊗ GATE VALVE
- ⊕ HYDRANT
- ⊖ WATER SHUT-OFF
- ⊙ UTILITY POLE
- ⊙ GUY ANCHOR
- ⊙ LIGHT POLE
- ⊙ SIGN
- ⊙ TREE
- TREE LINE
- FENCE
- SANITARY SEWER
- STORM SEWER
- WATER MAIN
- GAS MAIN
- ELECTRIC CABLE
- CONTOUR MAJOR
- CONTOUR MINOR
- T/P
- T/C
- B/C
- +100.00 SPOT ELEVATION



REMOVALS LEGEND:

- CONCRETE PAVEMENT / SLAB AND BASE TO BE REMOVED
- ASPHALT PAVEMENT TO BE REMOVED. EXISTING BASE TO REMAIN EXCEPT IN PROPOSED GREENBELT AREAS.
- BUILDING, FOUNDATION, SLAB AND FOOTING TO BE REMOVED
- REMOVE EXISTING VEGETATION AND TOPSOIL
- REMOVE CURB / CURB AND GUTTER
- EXISTING WALL TO BE REMOVED
- EXISTING UTILITY SERVICE TO BE REMOVED (CUT AND CAP FOR NEW CONNECTIONS)
- REMOVE EXISTING TREE, STUMP AND ROOTS
- SAWCUT CLEAN EDGE
- CATCH BASIN INLET FILTER
- EROSION CONTROL SILT FENCE
- GRAVEL MUD TRACKING MAT

KEY:

- ① EXISTING LIGHT POLE AND BASE TO BE REMOVED
- ② EXISTING SIGN AND BASE TO BE REMOVED
- ③ EXISTING TRANSFORMER TO BE REMOVED
- ④ EXISTING DUMPSTER ENCLOSURE TO BE REMOVED
- ⑤ EXISTING GUARD RAIL TO BE REMOVED
- ⑥ REMOVE / ABANDON EXISTING CATCH BASIN/MANHOLE
- ⑦ EXISTING BOLLARDS TO BE REMOVED
- ⑧ REMOVE / RELOCATE EXISTING DETROIT EDISON UNDERGROUND LINE PER DIRECTION OF OWNER
- ⑨ REMOVE / RELOCATE EXISTING UNDERGROUND TELEPHONE LINE PER DIRECTION OF OWNER

NOTE:
THE LOCATIONS OF EXISTING UNDERGROUND UTILITIES ARE SHOWN IN AN APPROXIMATE WAY ONLY AS DISCLOSED BY AVAILABLE UTILITY COMPANY RECORDS AND HAVE NOT BEEN INDEPENDENTLY VERIFIED BY THE COMPANY. NO GUARANTEE IS EITHER EXPRESSED OR IMPLIED AS TO THE COMPLETENESS OR ACCURACY THEREOF. THE CONTRACTOR SHALL DETERMINE THE EXACT LOCATION OF ALL EXISTING UTILITIES BEFORE COMMENCING WORK, AND AGREES TO BE FULLY RESPONSIBLE FOR ANY AND ALL DAMAGES WHICH MIGHT BE OCCASIONED BY THE CONTRACTOR'S FAILURE TO EXACTLY LOCATE AND PRESERVE ANY AND ALL UNDERGROUND UTILITIES. THE CONTRACTOR SHALL NOTIFY THE DESIGN ENGINEER IMMEDIATELY IF A CONFLICT IS APPARENT.

REVISIONS	DATE	BY	REVISIONS	DATE	BY	REVISIONS	DATE	BY	REVISIONS	DATE	BY
PER CITY COMMENTS	8/10/12	SRB									

Z E I M E T W O Z N I A K
& ASSOCIATES
Civil Engineers & Land Surveyors
55800 GRAND RIVER AVE., SUITE 100
NEW HUDSON, MICHIGAN 48165
P: (248) 437-5099 F: (248) 437-5222 www.zeimetwozniak.com

MISS DIG-SYSTEM, INC.
THREE FULL WORKING DAYS BEFORE YOU DIG. CALL THE MISS DIG-SYSTEM 1-800-482-7171

CLIENT:
TIM HORTON'S USA
565 EAST GRAND RIVER, SUITE 101
BRIGHTON, MI 48116 (810) 844-2747

REMOVALS PLAN
TIM HORTON'S
ROCHESTER HILLS, MICHIGAN

NOT FOR CONSTRUCTION
CITY FILE NO. 12-008

DATE 6/9/12	SCALE HOR: 1" = 20' VER: 1" = N/A
DESIGNED BY SRB	JOB NO. 12109
DRAWN BY SRB	SHEET SP-2

H:\Projects\12109\12109_prelim.SP.dwg REMOVALS 8/8/2012 10:50:27 AM SEBasczyk

© COPYRIGHT 2012