

CITY OF ROCHESTER HILLS

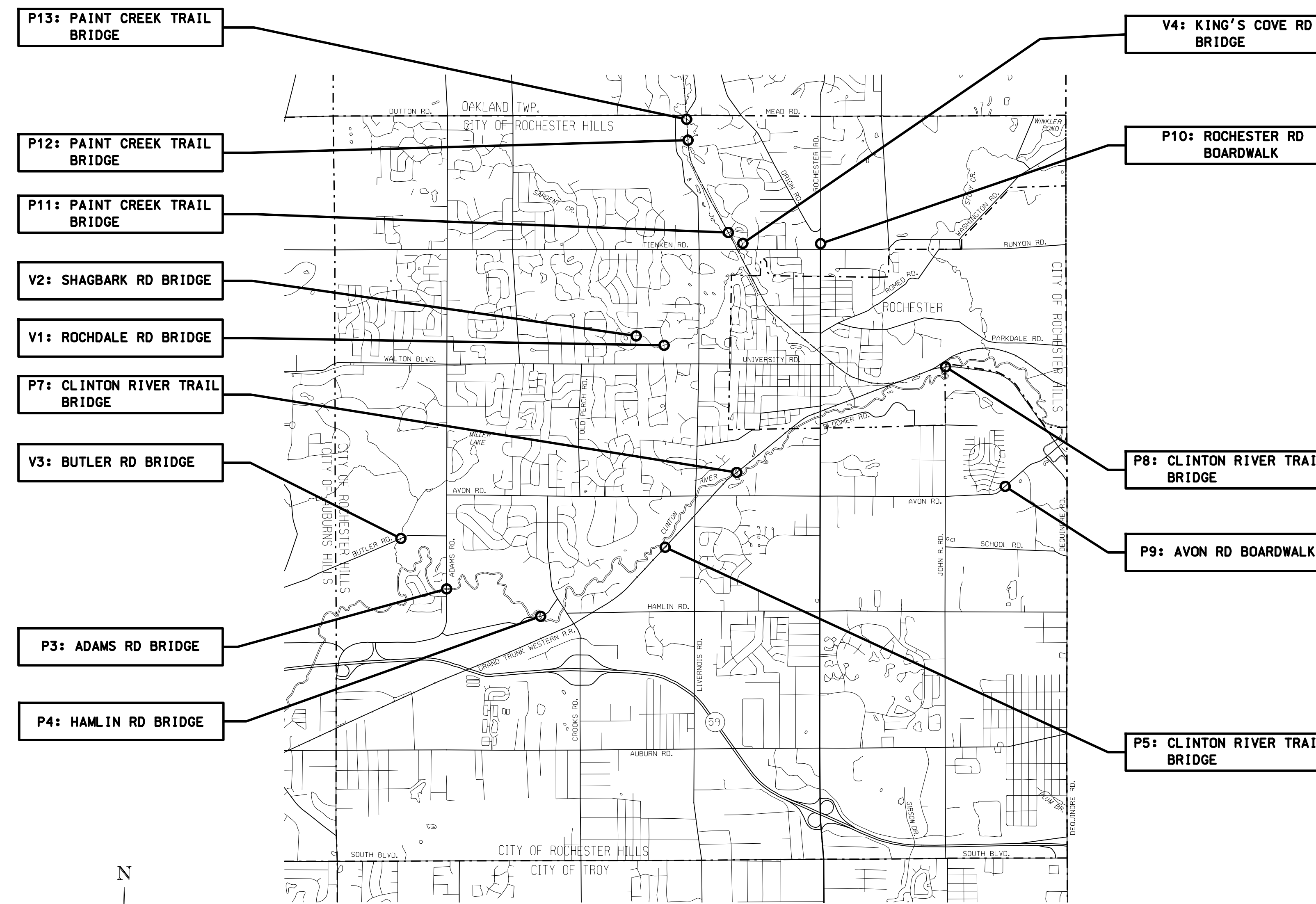
2011 BRIDGE REHABILITATION PROJECT

VEHICULAR AND PEDESTRIAN BRIDGES



CITY OF ROCHESTER HILLS

MAYOR	BRYAN K. BARNETT
CITY COUNCIL PRESIDENT	GREG HOOPER
CITY COUNCIL VICE PRESIDENT	MICHAEL WEBBER
CITY COUNCIL MEMBER	JAMES ROSEN
CITY COUNCIL MEMBER	ADAM KOCHENDERFER
CITY COUNCIL MEMBER	RAVI YALAMANCHI
CITY COUNCIL MEMBER	MARK TISDEL
CITY COUNCIL MEMBER	NATHAN KLOMP



LIST OF DRAWINGS

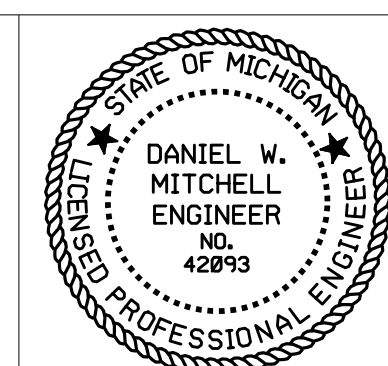
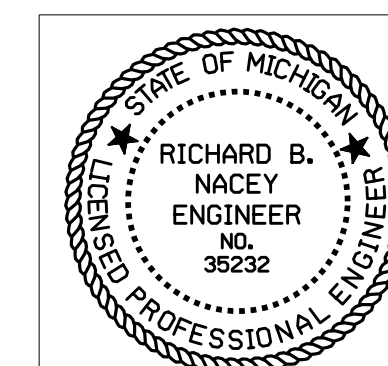
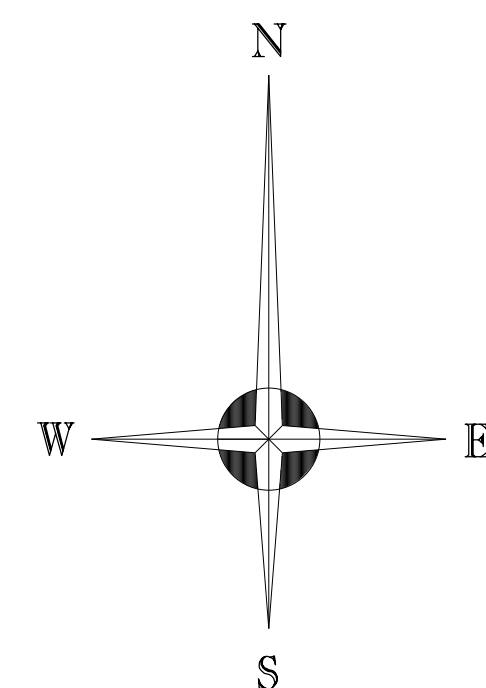
- S-1 - COVER SHEET
- S-2 - V1: ROCHDALE RD BRIDGE OVER SARGENT CREEK
- S-3 - V2: SHAGBARK RD BRIDGE OVER SARGENT CREEK
- S-4 - V3: BUTLER RD BRIDGE OVER GALLOWAY CREEK
- S-5 - V4: KING'S COVE RD BRIDGE OVER PAINT CREEK
- S-6 - P3: ADAMS RD BRIDGE OVER CLINTON RIVER
- S-7 - P4: HAMLIN RD BRIDGE OVER CLINTON RIVER
- S-8 - P5: CLINTON RIVER TRAIL BRIDGE OVER CLINTON RIVER
- S-9 - P7: CLINTON RIVER TRAIL BRIDGE OVER CLINTON RIVER
- S-10 - P8: CLINTON RIVER TRAIL BRIDGE OVER CLINTON RIVER
- S-11 - P9: AVON RD BOARDWALK OVER WETLANDS
- S-12 - P10: ROCHESTER RD BOARDWALK OVER WETLANDS
- S-13 - P11: PAINT CREEK TRAIL BRIDGE OVER PAINT CREEK
- S-14 - P12: PAINT CREEK TRAIL BRIDGE OVER PAINT CREEK
- S-15 - P13: PAINT CREEK TRAIL BRIDGE OVER PAINT CREEK
- S-16 - PROJECT NOTES

REFERENCE DRAWINGS:

- R-1 - V1: ROCHDALE RD BRIDGE
- R-2 - V2: SHAGBARK RD BRIDGE
- R-3 - V3: BUTLER RD BRIDGE
- R-4 - V3: BUTLER RD BRIDGE
- R-5 - V4: KING'S COVE RD BRIDGE
- R-6 - V4: KING'S COVE RD BRIDGE
- R-7 - P5: CLINTON RIVER TRAIL BRIDGE
- R-8 - P7: CLINTON RIVER TRAIL BRIDGE



HUBBELL, ROTH & CLARK, INC
 Consulting Engineers
 555 Hulet Drive, P.O. Box 824
 Bloomfield Hills, Michigan 48303-0824



RICHARD B. NACEY, P.E. DANIEL W. MITCHELL, P.E.