

# PARKS & FORESTRY DEPARTMENT

## 2012-2014 Budget Workshop



# PARKS DIVISION

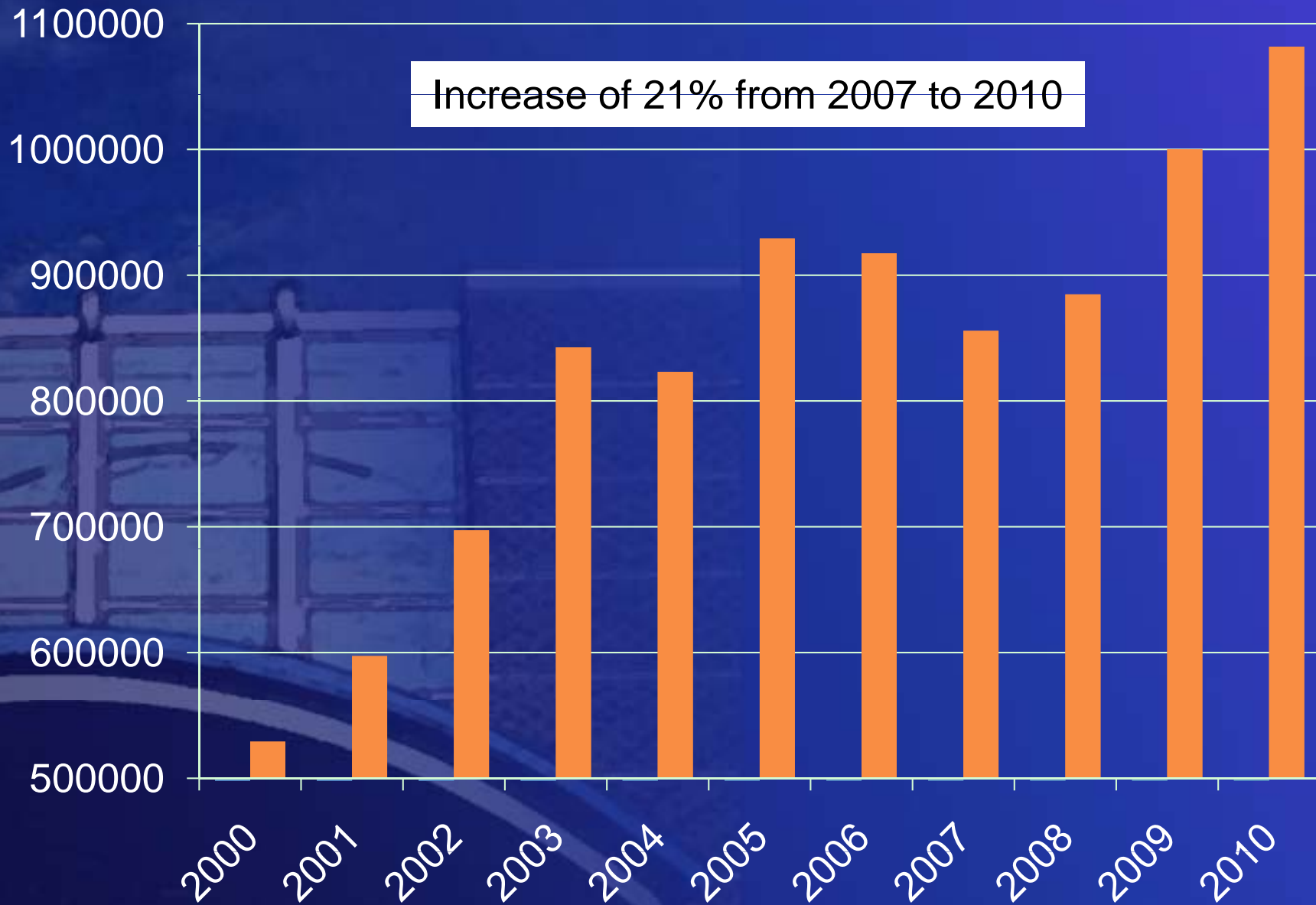
## Responsibilities & Duties



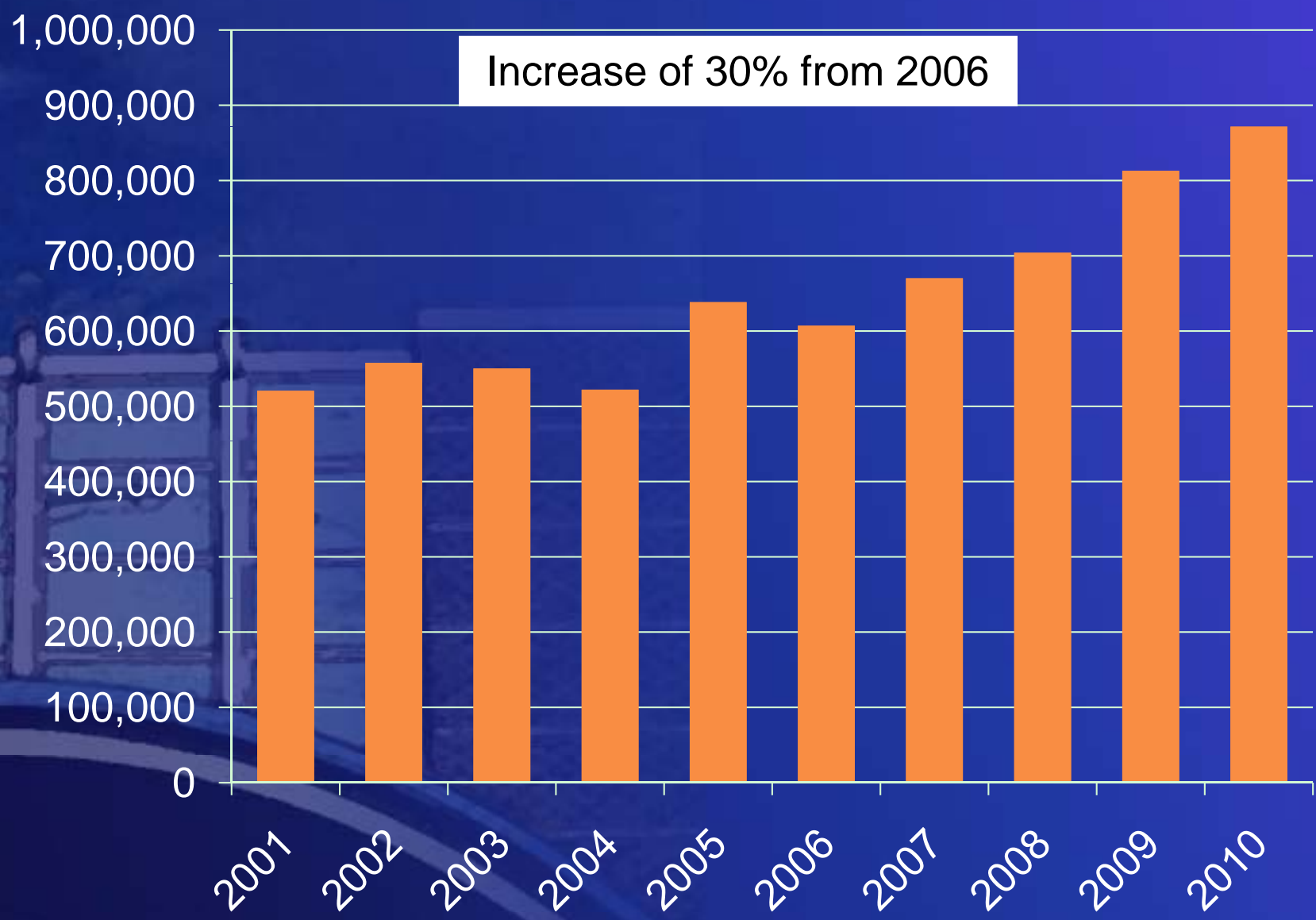
- Responsibilities
- Recreational Opportunities
- Resource Based



# PARK ATTENDANCE 2000-2010



# PARKS ANNUAL REVENUE - ACTUAL





## Museum

- Attendance continues to be strong with school groups utilizing the Museum programs to meet their Social Studies curriculum requirements in addition to the variety of programs, exhibits and special events
- Expanded RCS tours to all K-3 grades and 1840's one-room schoolhouse



## Museum

- Volunteers are essential for Museum staffing – 8,000 hours were already donated in 2011
- Seeking National Accreditation designation to open opportunities for additional private funding





## Spencer Park

➤ The lake is popular year round



➤ Park patrons enjoy a clean, safe and enjoyable park environment close to home





## Fredrick S. Carter Lake

➤ Watching the water

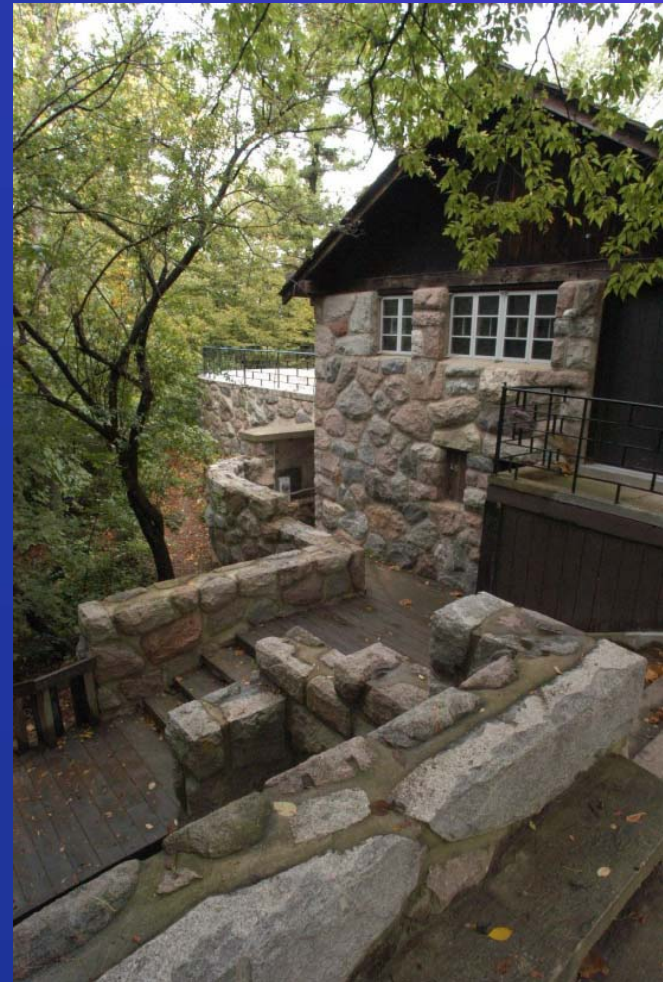






## Bloomer Park

- Shelter rentals continue to increase as family reunions and company picnics return to favor
- Expanded RARA camps and programs



## Bloomer Park

- More community events and fundraisers are being held at Bloomer
- Velodrome participants and race events draw statewide and growing national attention





## Yates Park

- The great spring fishing at Yates is drawing more fishermen from surrounding communities in southeast Michigan



## Clinton River

- Many more kayak and canoe enthusiasts are using an improved Clinton River for recreation



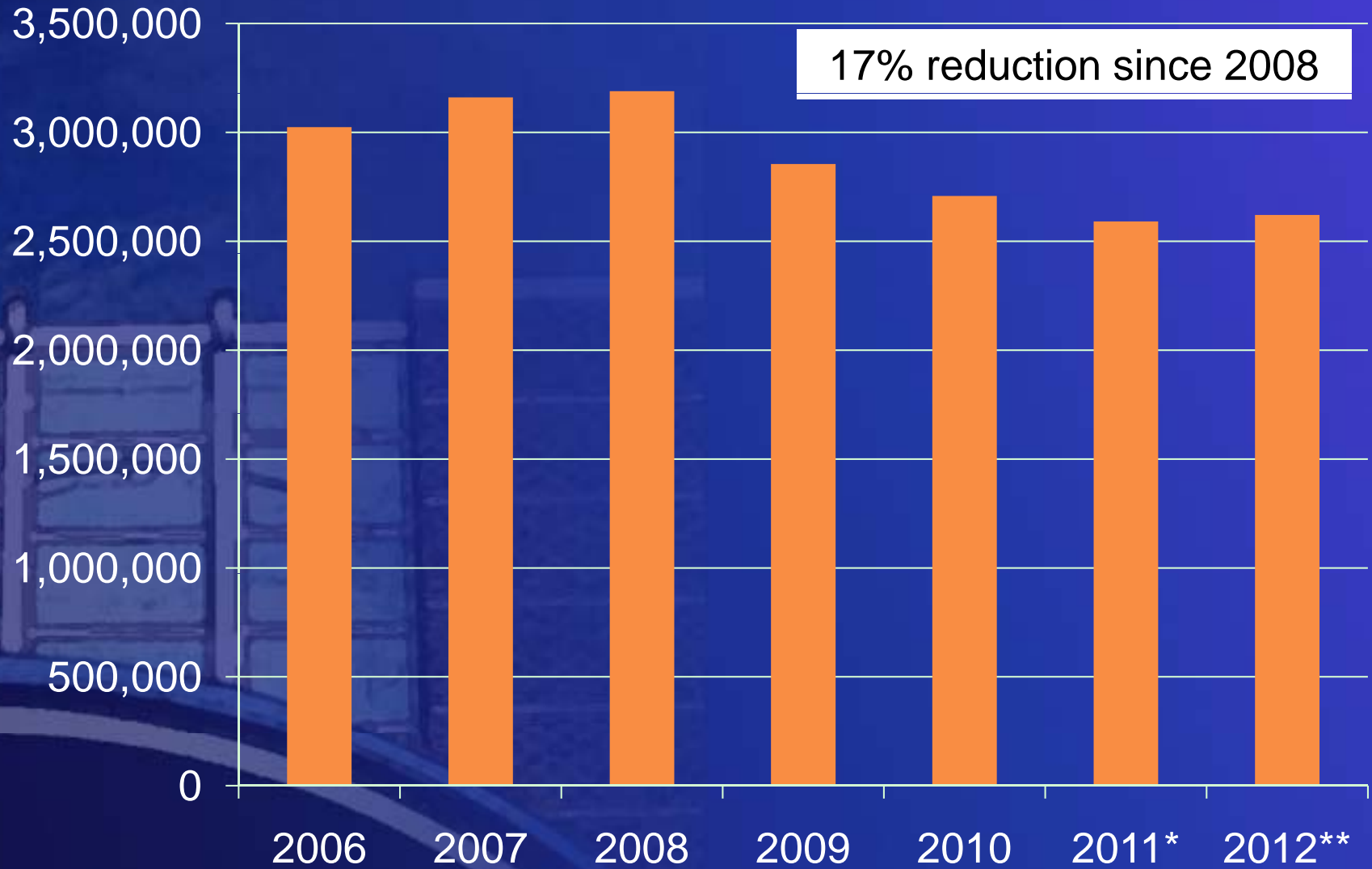


## Borden Park

- Continued strong soccer and ball field demand makes a lottery necessary for field usage reservations
- More tournaments and special events are being held



# PARKS ANNUAL EXPENSES



2006 – 2010 Actual Expenses

\* 2011 Budgeted  
\*\* 2012 Proposed

## Environmental Education Program Update

- New tenant at 1115 W. Avon – Clinton River Watershed Council signed initial 5-year lease
- Ranger/Naturalist and part-time Staff Assistant at Museum and Bloomer Park
- Relocated the Environment Education Program utilizing various park sites
- Continue to provide many of the environmental services currently being offered by the City



# FORESTRY DIVISION

## Responsibilities & Duties

- Quality of Life
- Safety
- Planting
- Tree City USA





# FORESTRY DIVISION



Pathway Clearance



Clinton River Clearance for  
Canoes/Kayaks



Street Tree Planting



Storm Damage Cleanup



Arbor Day 2011

# FORESTRY DIVISION 2011 Service Level

- Maintenance of street trees on:
  - 240 miles of subdivision local roads,
  - 38 miles of Hamlin, Livernois, Adams, and Walton Blvd. plantings, and all city-owned properties.
- Two field rangers for all tree maintenance and 500 to 700 service requests on ROW and city property annually.



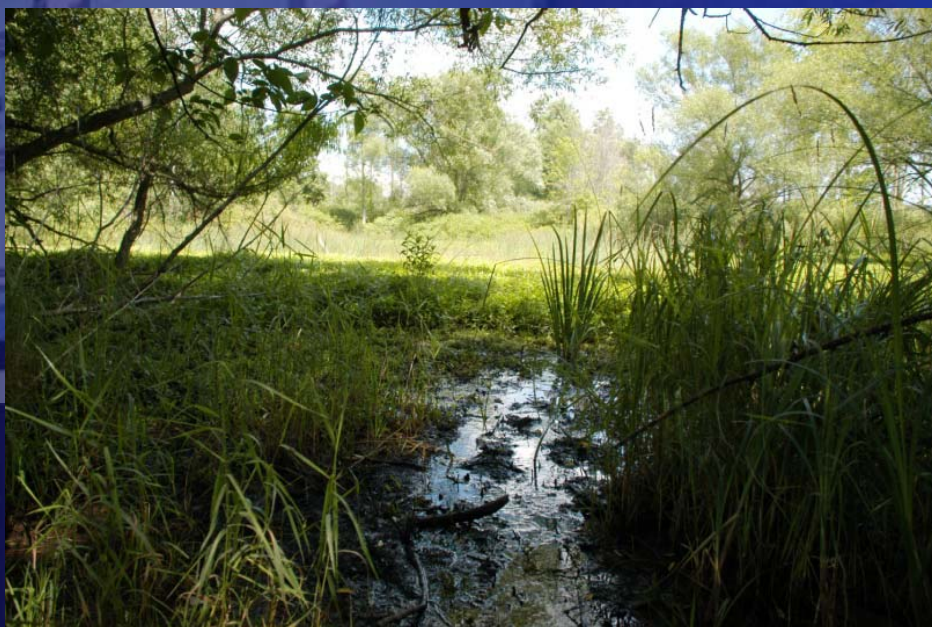
## 232 – TREE FUND

- Transfer out of last year's interest earned into General Fund for forestry operations
- For planting trees on City ROW or as match for tree planting grants



# 299 – Green Space & Natural Features Fund

- Continue seeking grants
- Evaluate and make recommendations on nominated properties





# QUESTIONS?

