

* NOT PRINTED - NO SPECIAL FLOOD HAZARD AREAS

COMMUNITY NAME	COMMUNITY NUMBER	LOCATED ON PANEL(S)	INITIAL NFIP MAP DATE	INITIAL FIRM DATE	MOST RECENT FIRM PANEL DATE
ADAMS TOWNSHIP OF	261028	0100, 0112, 0230, 0238, 0239, 0241, 0242, 0275	N/A	N/A	9/29/2006
AUBURN HILLS CITY OF	261023	0354, 0356, 0359, 0366, 0367, 0369, 0370, 0379, 0386, 0397, 0388, 0389, 0526, 0527	7/28/1979	7/28/1979	9/29/2006
BARKLEY CITY OF	261022	0653, 0749, 0801	N/A	N/A	9/29/2006
BEVERLY HILLS VILLAGE OF	261026	0518, 0519, 0520, 0529, 0530	N/A	N/A	9/29/2006
BINGHAM FARMS VILLAGE OF	261013	0518, 0519	N/A	N/A	9/29/2006
BIRMINGHAM CITY OF	261018	0517, 0529, 0536, 0537, 0538, 0541	8/15/1980	8/15/1980	9/29/2006
BLOOMFIELD CITY OF	261012	0507, 0509, 0511, 0512, 0516, 0518, 0519	N/A	N/A	9/29/2006
BLOOMFIELD TOWNSHIP OF	261019	0502, 0504, 0506, 0507, 0508, 0509, 0512, 0514, 0516, 0517, 0518, 0519, 0526	5/17/1974	5/17/1974	9/29/2006
BRANDON TOWNSHIP OF	261031	0527, 0528, 0529, 0536, 0537, 0538	N/A	N/A	9/29/2006
CLAWSON VILLAGE OF	261027	0050, 0075, 0180, 0185, 0190, 0195, 0226, 0211, 0212	N/A	N/A	9/29/2006
CLAWSON CITY OF	261070	0541, 0542, 0543, 0544	N/A	N/A	9/29/2006
COMMERCE TOWNSHIP OF	261073	0458, 0459, 0461, 0463, 0468, 0467, 0469, 0476, 0477, 0478, 0479, 0482, 0481, 0488	9/29/1977	9/29/1977	9/29/2006
FARMINGTON HILLS CITY OF	261072	0489	N/A	N/A	9/29/2006
FARMINGTON CITY OF	261071	0489, 0489, 0494, 0511, 0512, 0513, 0514, 0515, 0516, 0517, 0520, 0521, 0524	7/16/1980	7/16/1980	9/29/2006
FERNDALE CITY OF	261062	0652, 0653, 0654, 0701, 0702	N/A	N/A	9/29/2006
FRANKLIN VILLAGE OF	261025	0514, 0519	N/A	N/A	9/29/2006
GROVELAND TOWNSHIP OF	261029	0710, 0720, 0725, 0726, 0728, 0731, 0732, 0733, 0734, 0735	N/A	N/A	9/29/2006
HAZEL PARK CITY OF	261028	0701, 0702, 0703, 0704	N/A	N/A	9/29/2006
HIGHLAND TOWNSHIP OF	261050	0300, 0309, 0311, 0312, 0313, 0314, 0450, 0451, 0452, 0456	N/A	N/A	9/29/2006
HOLLY VILLAGE OF	261047	0130, 0131, 0132, 0133, 0134, 0141, 0142, 0145, 0152, 0153, 0154, 0161, 0165	6/24/1977	6/24/1977	9/29/2006
HOLLY CITY OF	261049	0154, 0162, 0163, 0164	N/A	N/A	9/29/2006
HUNTINGTON WOODS CITY OF	261072	0687, 0688	N/A	N/A	9/29/2006
INDEPENDENCE TOWNSHIP OF	261045	0190, 0195, 0211, 0212, 0213, 0214, 0227, 0229, 0231, 0232, 0233, 0234, 0251	5/13/1977	5/13/1977	9/29/2006
RESCUE HERBERT CITY OF	261077	0352, 0353, 0354	N/A	N/A	9/29/2006
LAKE ANGELUS CITY OF	261070	0354, 0355, 0362, 0366	N/A	N/A	9/29/2006
LAKE ORION VILLAGE OF	261058	0217, 0219, 0236, 0238	N/A	N/A	9/29/2006
CANTON VILLAGE CITY OF	261027	0528, 0529, 0536, 0537	N/A	N/A	9/29/2006
TELSHARD VILLAGE OF	261024	0529	N/A	N/A	9/29/2006
LYON TOWNSHIP OF	261027	0489, 0493, 0494, 0498, 0499, 0499, 0508, 0508, 0515, 0520	N/A	N/A	9/29/2006
MADISON HEIGHTS CITY OF	261074	0542, 0544, 0551, 0552, 0553, 0554, 0701, 0702	5/24/1974	5/24/1974	9/29/2006
MADRID TOWNSHIP OF	261040	0450, 0451, 0452, 0453, 0454, 0455, 0461, 0462, 0463, 0464, 0468, 0469	N/A	N/A	9/29/2006
MERRILL VILLAGE OF	261017	0451, 0452, 0453, 0454	N/A	N/A	9/29/2006
NORTHVILLE CITY OF	261025	0609, 0620, 0626, 0636	9/6/1974	9/6/1974	9/29/2006
NOVA CITY OF	261075	0489, 0493, 0494, 0494, 0508, 0507, 0508, 0509, 0520, 0527, 0528, 0529, 0531	6/28/1974	6/28/1974	9/29/2006
NOVA TOWNSHIP OF	261027	0489	N/A	N/A	9/29/2006
OAK PARK CITY OF	261023	0677, 0679, 0681, 0682, 0683, 0684	N/A	N/A	9/29/2006
OAKLAND TOWNSHIP OF	261076	0237, 0239, 0241, 0242, 0243, 0244, 0253, 0275, 0371, 0379, 0381, 0382, 0383, 0384	4/11/1977	12/11/1982	9/29/2006
ORCHARD LAKE VILLAGE CITY OF	261077	0491, 0493	N/A	N/A	9/29/2006
ORION TOWNSHIP OF	261033	0212, 0214, 0216, 0217, 0218, 0219, 0228, 0229, 0238, 0239, 0522, 0524, 0526	N/A	N/A	9/29/2006
ONTONAGON VILLAGE OF	261027	0357, 0358, 0359, 0376, 0377, 0378, 0379	N/A	N/A	9/29/2006
OXFORD TOWNSHIP OF	261035	0679, 0680, 0681, 0682, 0683, 0684, 0685, 0686, 0687, 0688, 0689	N/A	N/A	9/29/2006
OXFORD VILLAGE OF	261036	0210, 0211, 0230, 0236	N/A	N/A	9/29/2006
PLEASANT RIDGE CITY OF	261006	0682, 0683	N/A	N/A	9/29/2006
PONTIAC CITY OF	261071	0358, 0361, 0364, 0367, 0368, 0369, 0380, 0381, 0382, 0383, 0384, 0385, 0386, 0387, 0388	5/15/1979	5/15/1979	9/29/2006
ROCHESTER HILLS CITY OF	261071	0414, 0527, 0531, 0532, 0551, 0552	4/29/1975	9/16/1981	9/29/2006
ROCHESTER CITY OF	261026	0384, 0392, 0402, 0411	8/11/1975	5/5/1981	9/29/2006
ROSELAND TOWNSHIP OF	261029	0710, 0712, 0713, 0714, 0715, 0716, 0717, 0718, 0719	N/A	N/A	9/29/2006
ROYAL OAK TOWNSHIP OF	261078	0537, 0539, 0541, 0542, 0543, 0544, 0553, 0681, 0682, 0701	8/4/1976	N/A	9/29/2006
ROYAL OAK CITY OF	261078	0537, 0539, 0541, 0542, 0543, 0544, 0553, 0681, 0682, 0701	N/A	N/A	9/29/2006
SOUTHLYON CITY OF	261037	0535, 0536	N/A	N/A	9/29/2006
SOUTHFIELD CITY OF	261079	0518, 0519, 0520, 0521, 0522, 0523, 0524, 0525, 0526, 0527, 0528, 0529, 0530	5/17/1974	9/29/1979	9/29/2006
SOUTHFIELD TOWNSHIP OF	261079	0518, 0519, 0520, 0521, 0522, 0523, 0524, 0525, 0526, 0527, 0528, 0529, 0530	N/A	N/A	9/29/2006
SPRINGFIELD TOWNSHIP OF	261078	0537, 0539, 0541, 0542, 0543, 0544, 0553, 0681, 0682, 0701	5/10/1978	1/10/1980	9/29/2006
SYRACUSE CITY OF	261070	0364, 0365	N/A	N/A	9/29/2006
TROY CITY OF	261001	0527, 0529, 0531, 0532, 0533, 0534, 0535, 0536, 0537, 0538, 0539, 0540, 0541, 0542, 0543	5/2/1980	5/2/1980	9/29/2006
WILSON CITY OF	261041	0489, 0491, 0492, 0493	N/A	N/A	9/29/2006
WATERFORD TOWNSHIP OF	261024	0364, 0477, 0481, 0482, 0501, 0502	8/16/1974	2/2/1983	9/29/2006
WEST BLOOMFIELD TOWNSHIP OF	261082	0551, 0554, 0551, 0551, 0551, 0551, 0551, 0551, 0551, 0551, 0551, 0551	6/28/1974	3/2/1983	9/29/2006
WHITE LAKE TOWNSHIP OF	261079	0339, 0452, 0456, 0457, 0476, 0477	5/27/1977	2/1/1985	9/29/2006
WIXOM CITY OF	261038	0466, 0467, 0468, 0469, 0469, 0477	N/A	N/A	9/29/2006
WILBERNE LAKE VILLAGE OF	261080	0467, 0476, 0486	4/11/1979	5/1/1987	9/29/2006

1 Non Flood Prone

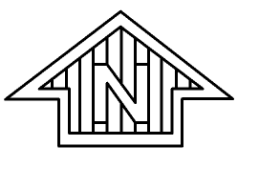
2 Panel Not Printed

MAP DATES

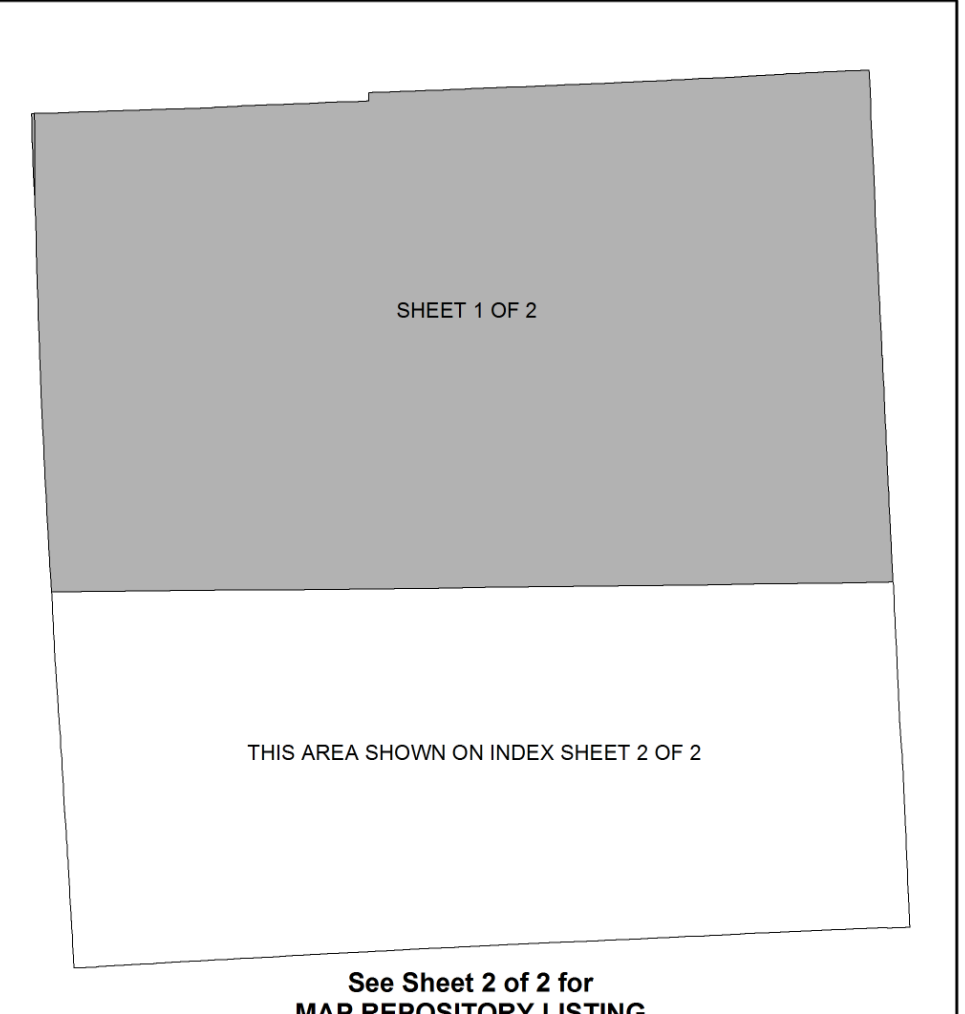
This FIRM Index displays the map date for each FIRM panel at the time that this Index was printed. Because this Index may not be distributed to unaffected communities in subsequent revisions, users may determine the current map date for each FIRM panel by visiting the FEMA Map Service Center website at <http://msc.fema.gov> or by calling the Map Service Center at 1-800-358-9616.

NOTE TO USER

Future revisions to this FIRM Index will only be issued to communities that are located on FIRM panels being revised. This FIRM Index therefore remains valid for FIRM panels dated September 29, 2006 or earlier. Please refer to the "MOST RECENT FIRM PANEL DATE" column in the Listing of Communities table to determine the most recent FIRM index date for each community.



OAKLAND COUNTY, MICHIGAN INDEX LOCATOR DIAGRAM



See Sheet 2 of 2 for MAP REPOSITORY LISTING

NATIONAL FLOOD INSURANCE PROGRAM

MAP INDEX

FIRM FLOOD INSURANCE RATE MAP

OAKLAND COUNTY, MICHIGAN (ALL JURISDICTIONS)
(SEE LISTING OF COMMUNITIES TABLE)

MAP INDEX SHEET 1 OF 2

PANELS PRINTED: 50, 130, 131, 132, 133, 134, 141, 142, 145, 151, 152, 153, 154, 160, 161, 165, 170, 180, 185, 190, 195, 205, 211, 213, 214, 216, 217, 218, 219, 225, 236, 237, 238, 239, 241, 242, 243, 244, 263, 275, 300, 311, 312, 313, 316, 318, 319, 327, 329, 331, 332, 333, 334, 336, 337, 338, 339, 341, 342, 343, 344, 351, 352, 353, 354, 356, 357, 358, 359, 361, 362, 363, 364, 366, 367, 368, 369, 376, 377, 378, 379, 381, 382, 383, 384, 386, 387, 388, 389, 391, 392, 393, 401, 403, 411, 412, 413
(SEE SHEET 2 FOR ADDITIONAL PANELS PRINTED)

MAP NUMBER 26125CIND1A

EFFECTIVE DATE SEPTEMBER 29, 2006

Federal Emergency Management Agency