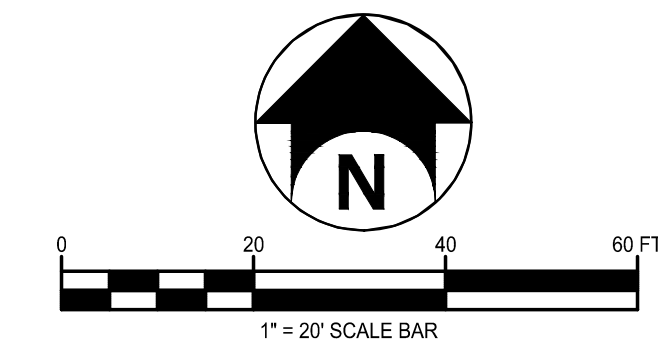


Tag	Scientific Name	Common Name	DBH1	Condition
1700	Juglans nigra	Black Walnut	12.8	Fair
1701	Acer saccharinum	Silver Maple	13.8	Fair
1702	Carya ovata	Shagbark Hickory	6.9	Fair
1703	Salix amygdaloides	Peachleaf Willow	10.9	Fair
1704	Salix amygdaloides	Peachleaf Willow	12.1	Fair
1705	Salix amygdaloides	Peachleaf Willow	8.8	Fair
1706	Fraxinus pennsylvanica	Green Ash	10.0	Fair
1707	Acer saccharinum	Silver Maple	13.8	Fair
1708	Juglans nigra	Black Walnut	7.3	Fair
1709	Juglans nigra	Black Walnut	6.0	Fair
1710	Ulmus americana	American Elm	12.7	Fair
1711	Juglans nigra	Black Walnut	20.5	Fair
1713	Juglans nigra	Black Walnut	14.9	Fair
1714	Juglans nigra	Black Walnut	9.0	Fair
1715	Juglans nigra	Black Walnut	19.4	Fair
1716	Tilia americana	Basswood	9.5	Fair
1717	Tilia americana	Basswood	7.8	Fair
1718	Tilia americana	Basswood	7.8	Fair
1719	Tilia americana	Basswood	8.0	Fair
1720	Quercus velutina	Black Oak	42.7	Poor
1721	Quercus velutina	Black Oak	20.9	Fair
1722	Quercus velutina	Black Oak	9.8	Fair
1723	Tilia americana	Basswood	7.3	Fair
1724	Tilia americana	Basswood	22.1	Fair
1725	Tilia americana	Basswood	10.2	Fair
1726	Tilia americana	Basswood	7.6	Fair
1727	Tilia americana	Basswood	7.7	Fair
1728	Tilia americana	Basswood	7.8	Fair
1729	Tilia americana	Basswood	7.5	Fair
1730	Quercus velutina	Black Oak	6.2	Fair
1731	Quercus velutina	Black Oak	27.0	Fair
1732	Tilia americana	Basswood	9.8	Fair
1733	Tilia americana	Basswood	8.6	Fair

Tag	Scientific Name	Common Name	DBH1	Condition
1734	Tilia americana	Basswood	6.5	Fair
1735	Tilia americana	Basswood	7.5	Fair
1736	Quercus velutina	Black Oak	8.0	Fair
1737	Quercus velutina	Black Oak	6.4	Fair
1738	Tilia americana	Basswood	11.7	Fair
1739	Juglans nigra	Black Walnut	7.6	Fair
1740	Tilia americana	Basswood	7.1	Fair
1741	Tilia americana	Basswood	8.9	Fair
1742	Juglans nigra	Black Walnut	13.5	Fair
1743	Tilia americana	Basswood	7.5	Fair
1744	Tilia americana	Basswood	12.2	Fair
1745	Tilia americana	Basswood	8.0	Fair
1746	Juglans nigra	Black Walnut	13.4	Fair
1747	Tilia americana	Basswood	14.1	Fair
1748	Populus deltoides	Eastern Cottonwood	12.4	Fair
1749	Acer saccharum	Sugar Maple	6.3	Fair
1750	Populus deltoides	Eastern Cottonwood	12.2	Fair
1751	Tilia americana	Basswood	10.7	Fair
1752	Tilia americana	Basswood	7.4	Fair
1753	Tilia americana	Basswood	9.1	Fair
1754	Tilia americana	Basswood	6.6	Fair
1755	Tilia americana	Basswood	8.3	Fair
1756	Juglans nigra	Black Walnut	10.0	Fair
1757	Juglans nigra	Black Walnut	10.5	Fair
1758	Juglans nigra	Black Walnut	7.9	Fair
1759	Juglans nigra	Black Walnut	7.9	Fair
1760	Juglans nigra	Black Walnut	12.8	Fair
1761	Quercus velutina	Black Oak	11.3	Fair
1762	Quercus velutina	Black Oak	9.1	Fair
1763	Tilia americana	Basswood	8.6	Fair
1764	Moras alba	White Mulberry	9.4	Fair
1765	Juglans nigra	Black Walnut	7.5	Fair
1766	Juglans nigra	Black Walnut	10.0	Fair
1767	Juglans nigra	Black Walnut	15.9	Fair
1768	Juglans nigra	Black Walnut	14.0	Fair
1769	Quercus macrocarpa	Bur Oak	22.6	Fair
1770	Juglans nigra	Black Walnut	20.4	Fair
1771	Quercus velutina	Black Oak	16.0	Fair
1772	Juglans nigra	Black Walnut	26.2	Fair
1773	Juglans nigra	Black Walnut	16.0	Fair
1774	Juglans nigra	Black Walnut	15.3	Fair
1775	Juglans nigra	Black Walnut	14.1	Fair
1776	Juglans nigra	Black Walnut	24.2	Fair
1777	Quercus velutina	Black Oak	16.0	Fair
1778	Quercus velutina	Black Oak	14.8	Fair
1779	Quercus velutina	Black Oak	16.1	Fair
1780	Quercus velutina	Black Oak	35.8	Fair
1781	Quercus velutina	Black Oak	14.0	Fair
1782	Juglans nigra	Black Walnut	31.2	Fair
1783	Quercus velutina	Black Oak	14.5	Fair
1784	Quercus velutina	Black Oak	28.4	Fair
1785	Quercus velutina	Black Oak	20.3	Fair
1786	Quercus velutina	Black Oak	25.8	Fair
1787	Quercus velutina	Black Oak	22.6	Fair
1788	Quercus velutina	Black Oak	21.6	Fair
1789	Juglans nigra	Black Walnut	27.9	Fair
1790	Juglans cinerea	Butternut	8.0	Fair
1791	Malus pumila	Apple	9.0	Fair
1792	Picea pungens	Blue Spruce	22.5	Fair
1793	Picea pungens	Blue Spruce	30.8	Fair
1794	Picea pungens	Blue Spruce	19.2	Fair
1795	Platanus occidentalis	Sycamore	29.9	Fair
1796	Ulmus americana	American Elm	7.2	Fair
1797	Picea pungens	Blue Spruce	23.8	Fair
1798	Magnolia soulangeana	Magnolia	13.7	Fair
1799	Magnolia soulangeana	Magnolia	11.0	Fair
1800	Salix amygdaloides	Peachleaf Willow	9.4	Fair
1801	Populus deltoides	Eastern Cottonwood	14.3	Fair
1802	Populus deltoides	Eastern Cottonwood	10.2	Fair
1803	Malus pumila	Apple	6.5	Fair
1804	Malus pumila	Apple	7.5	Fair
1805	Malus pumila	Apple	8.6	Fair
1806	Malus pumila	Apple	7.0	Fair
1807	Malus pumila	Apple	6.4	Fair
1808	Malus pumila	Apple	8.1	Fair
1809	Malus pumila	Apple	8.6	Fair
1810	Malus pumila	Apple	7.0	Fair
1811	Malus pumila	Apple	6.1	Fair
1812	Malus pumila	Apple	6.5	Fair
1813	Malus pumila	Apple	7.5	Fair
1814	Malus pumila	Apple	6.2	Fair
1815	Malus pumila	Apple	7.6	Fair
1816	Malus pumila	Apple	6.8	Fair
1817	Malus pumila	Apple	6.1	Fair
1818	Malus pumila	Apple	7.4	Fair
1819	Malus pumila	Apple	7.3	Fair
1820	Malus pumila	Apple	7.5	Fair
1821	Malus pumila	Apple	6.7	Fair
1822	Carya ovata	Shagbark Hickory	23.8	Fair
1823	Acer saccharinum	Silver Maple	21.8	Fair
1824	Acer saccharinum	Silver Maple	14.4	Fair
1825	Acer saccharinum	Silver Maple	35.4	Fair
1826	Acer negundo	Boxelder Maple	10.5	Fair
1827	Acer negundo	Boxelder Maple	22.4	Fair
1828	Populus deltoides	Eastern Cottonwood	11.2	Fair
1829	Juglans nigra	Black Walnut	10.6	Fair
1830	Populus deltoides	Eastern Cottonwood	22.8	Fair
1831	Quercus velutina	Black Oak	37.2	Fair
1832	Populus deltoides	Eastern Cottonwood	24.4	Fair
1833	Quercus velutina	Black Oak	33.5	Fair
1834	Quercus velutina	Black Oak	13.7	Fair
1835	Quercus velutina	Black Oak	17.0	Fair
1836	Quercus velutina	Black Oak	13.8	Fair
1837	Quercus velutina	Black Oak	8.3	Fair
1838	Quercus velutina	Black Oak	19.7	Fair
1839	Quercus velutina	Black Oak	12.8	Fair
1840	Quercus velutina	Black Oak	7.1	Fair
1841	Quercus velutina	Black Oak	17.0	Fair
1842	Acer saccharinum	Silver Maple	13.8	Fair



REDWOOD ROCHESTER HILLS

E. AVON ROAD
ROCHESTER HILLS, MI 48307
OAKLAND COUNTY



7510 E. PLEASANT VALLEY RD
INDEPENDENCE, OH 44131

BERGMANN ARCHITECTS ENGINEERS PLANNERS

Bergmann Associates, Architects, Engineers,
Landscape Architects & Surveyors, D.P.C.
7050 West Saginaw Hwy.
Suite 200
Lansing, MI 48917

office: 517.272.9835
fax: 517.272.9836

www.bergmannpc.com

DATE	DESCRIPTION
11/18/2018	PUD REVIEW
02/04/2019	REV. PER CITY COMMENTS
03/21/2019	2ND REV. PER CITY COMMENTS
06/02/2019	3RD REV. PER CITY COMMENTS
08/22/2019	4TH REV. PER CITY COMMENTS
08/27/2019	STEP ONE PUD REVIEW
12/23/2019	CITY RESUBMITTAL
01/17/2020	PERMIT REVIEW
03/02/2020	ENGINEERING RESUBMITTAL
05/06/2020	ENGINEERING RESUBMITTAL
06/09/2020	ENGINEERING RESUBMITTAL
07/06/2020	ENGINEERING RESUBMITTAL

Not For Construction

Copyright © Bergmann Associates, Architects, Engineers,
Landscape Architects & Surveyors, D.P.C.

Project Manager: P. FURTAW, PE	Checked By: P. FURTAW, PE
Designed By: I. GRAHAM, PE	Drawn By: I. GRAHAM, PE
Date Plotted: NOVEMBER 9, 2018	Plot Number: 12963.00

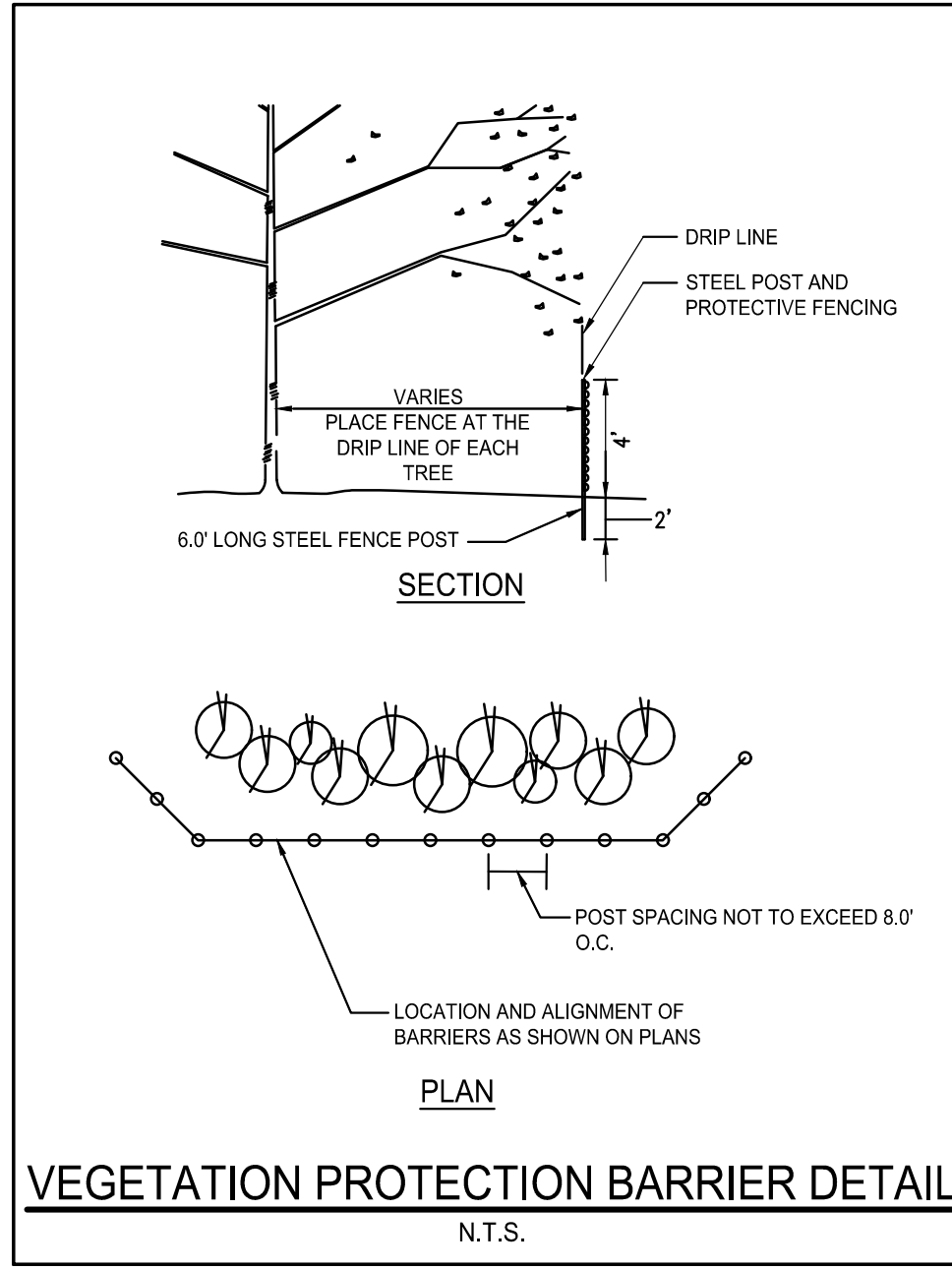
TREE INVENTORY PLAN

C301

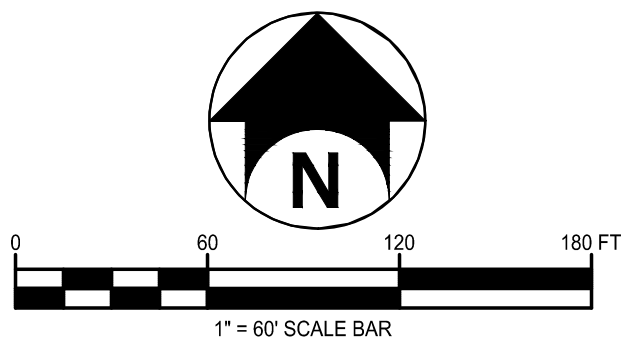


NOTE:
ALL TREES BEING RETAINED WILL BE IDENTIFIED BY PAINTING, FLAGGING, OR SOME OTHER APPROVED METHOD AND, WHERE PROTECTIVE BARRIERS ARE NECESSARY, THAT THEY WILL BE ERRECTED BEFORE WORKS STARTS.

Tag	Scientific Name	Common Name	DBH1	Condition	Notes	Replace Req'd
1701	Acer saccharinum	Silver Maple	13.8	Fair	To Be Removed	X
1707	Acer saccharinum	Silver Maple	13.8	Fair	To Be Removed	X
1711	Juglans nigra	Black Walnut	20.5	Fair	To Be Removed	X
1713	Juglans nigra	Black Walnut	14.9	Fair	To Be Removed	X
1714	Juglans nigra	Black Walnut	9.0	Fair	To Be Removed	X
1772	Juglans nigra	Black Walnut	26.2	Fair	To Be Removed	X
1773	Juglans nigra	Black Walnut	16.0	Fair	To Be Removed	X
1774	Juglans nigra	Black Walnut	15.3	Fair	To Be Removed	X
1775	Juglans nigra	Black Walnut	14.1	Fair	To Be Removed	X
1776	Juglans nigra	Black Walnut	24.2	Fair	To Be Removed	X
1789	Juglans nigra	Black Walnut	27.9	Fair	To Be Removed	X
1790	Juglans cinerea	Butternut	8.0	Fair	To Be Removed	X
1791	Malus pumila	Apple	9.0	Fair	To Be Removed	X
1792	Picea pungens	Blue Spruce	22.5	Fair	To Be Removed	X
1793	Picea pungens	Blue Spruce	30.8	Fair	To Be Removed	X
1794	Picea pungens	Blue Spruce	19.2	Fair	To Be Removed	X
1795	Platanus occidentalis	Sycamore	29.9	Fair	To Be Removed	X
1796	Ulmus americana	American Elm	7.2	Fair	To Be Removed	X
1797	Picea pungens	Blue Spruce	23.8	Fair	To Be Removed	X
1798	Magnolia soulangeana	Magnolia	13.7	Fair	To Be Removed	X
1799	Magnolia soulangeana	Magnolia	11.0	Fair	To Be Removed	X
1803	Malus pumila	Apple	6.5	Fair	To Be Removed	X
1804	Malus pumila	Apple	7.5	Fair	To Be Removed	X
1805	Malus pumila	Apple	8.6	Fair	To Be Removed	X
1807	Malus pumila	Apple	6.4	Fair	To Be Removed	X
1808	Malus pumila	Apple	8.1	Fair	To Be Removed	X
1811	Malus pumila	Apple	6.1	Fair	To Be Removed	X
1817	Malus pumila	Apple	6.1	Fair	To Be Removed	X
1818	Malus pumila	Apple	7.4	Fair	To Be Removed	X
1819	Malus pumila	Apple	7.3	Fair	To Be Removed	X
1820	Malus pumila	Apple	7.5	Fair	To Be Removed	X
1823	Acer saccharinum	Silver Maple	21.8	Fair	To Be Removed	X
1824	Acer saccharinum	Silver Maple	14.4	Fair	To Be Removed	X
1825	Acer saccharinum	Silver Maple	35.4	Fair	To Be Removed	X
1826	Acer negundo	Boxelder Maple	10.5	Fair	To Be Removed	X
1827	Acer negundo	Boxelder Maple	22.4	Fair	To Be Removed	X
1828	Populus deltoides	Eastern Cottonwood	11.2	Fair	To Be Removed	X
1829	Juglans nigra	Black Walnut	10.6	Fair	To Be Removed	X
1834	Quercus velutina	Black Oak	13.7	Fair	To Be Removed	X
1835	Quercus velutina	Black Oak	17.0	Fair	To Be Removed	X
1836	Quercus velutina	Black Oak	13.8	Fair	To Be Removed	X
1837	Quercus velutina	Black Oak	8.3	Fair	To Be Removed	X
1838	Quercus velutina	Black Oak	19.7	Fair	To Be Removed	X
1839	Quercus velutina	Black Oak	12.8	Fair	To Be Removed	X
1840	Quercus velutina	Black Oak	7.1	Fair	To Be Removed	X
Total To Be Replaced						45



SITE LEGEND:
-x- TREE PROTECTION BARRIER



REDWOOD ROCHESTER HILLS

E. AVON ROAD
ROCHESTER HILLS, MI 48307
OAKLAND COUNTY



7510 E. PLEASANT VALLEY RD
INDEPENDENCE, OH 44131



Bergmann Associates, Architects, Engineers,
Landscape Architects & Surveyors, D.P.C.
7050 West Saginaw Hwy.
Suite 200
Lansing, MI 48917

office: 517.272.9835
fax: 517.272.9836

www.bergmannpc.com

DATE	DESCRIPTION
11/16/2018	PUD REVIEW
02/04/2019	REV. PER CITY COMMENTS
03/21/2019	2ND REV. PER CITY COMMENTS
06/02/2019	3RD REV. PER CITY COMMENTS
08/22/2019	4TH REV. PER CITY COMMENTS
08/27/2019	STEP ONE PUD REVIEW
12/23/2019	CITY RESUBMITTAL
01/17/2020	PERMIT REVIEW
03/02/2020	ENGINEERING RESUBMITTAL
05/06/2020	ENGINEERING RESUBMITTAL
06/09/2020	ENGINEERING RESUBMITTAL
07/06/2020	ENGINEERING RESUBMITTAL

Not For Construction

Copyright © Bergmann Associates, Architects, Engineers,
Landscape Architects & Surveyors, D.P.C.

Prepared By: P. FURTAW, PE	Checked By: P. FURTAW, PE
Designed By: I. GRAHAM, PE	Drawn By: I. GRAHAM, PE
Date Plotted: NOVEMBER 9, 2018	Project Number: 12963.00

TREE PRESERVATION PLAN

C302

REDWOOD ROCHESTER HILLS

E. AVON ROAD
ROCHESTER HILLS, MI 48307
OAKLAND COUNTY

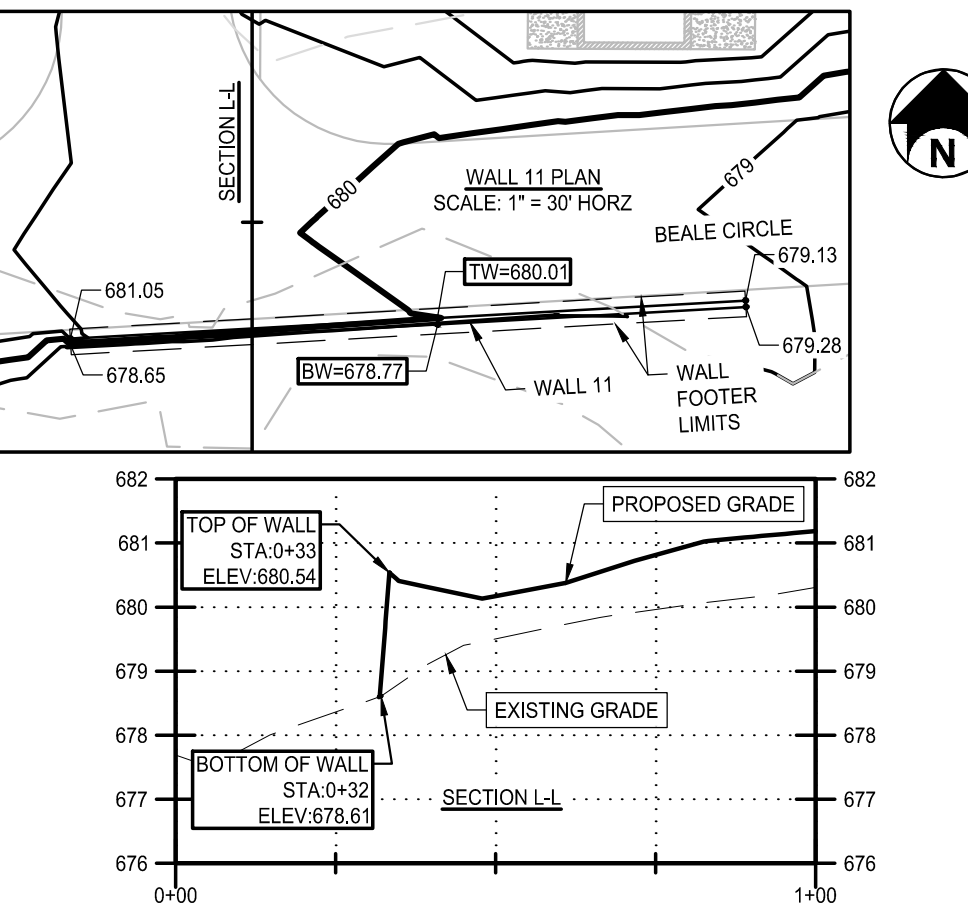
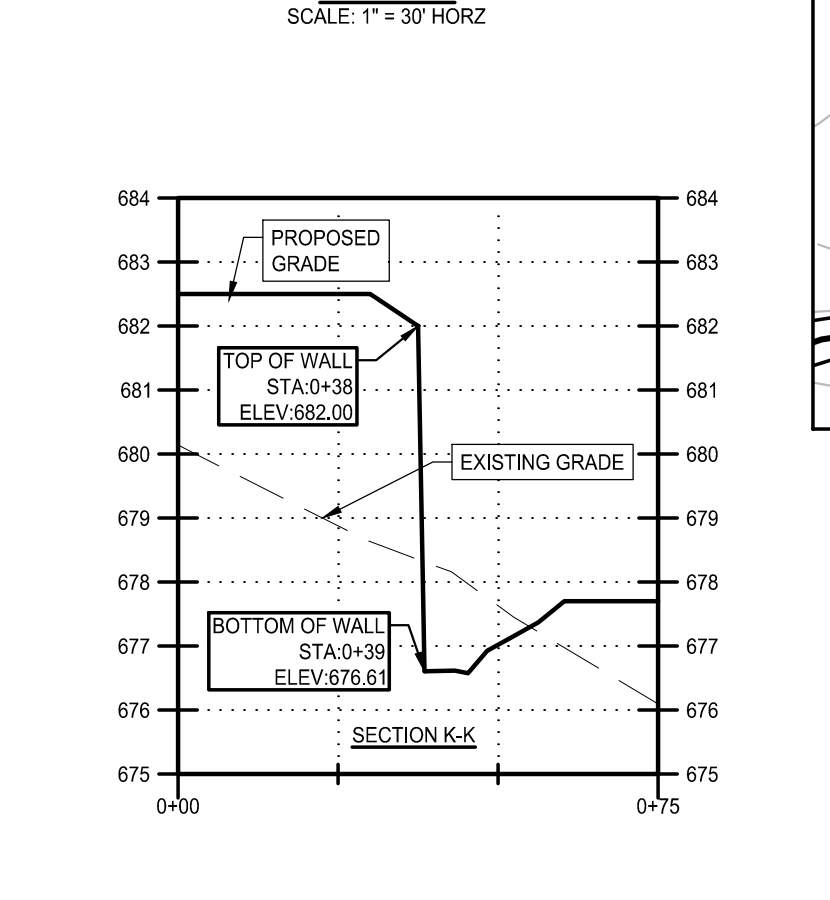
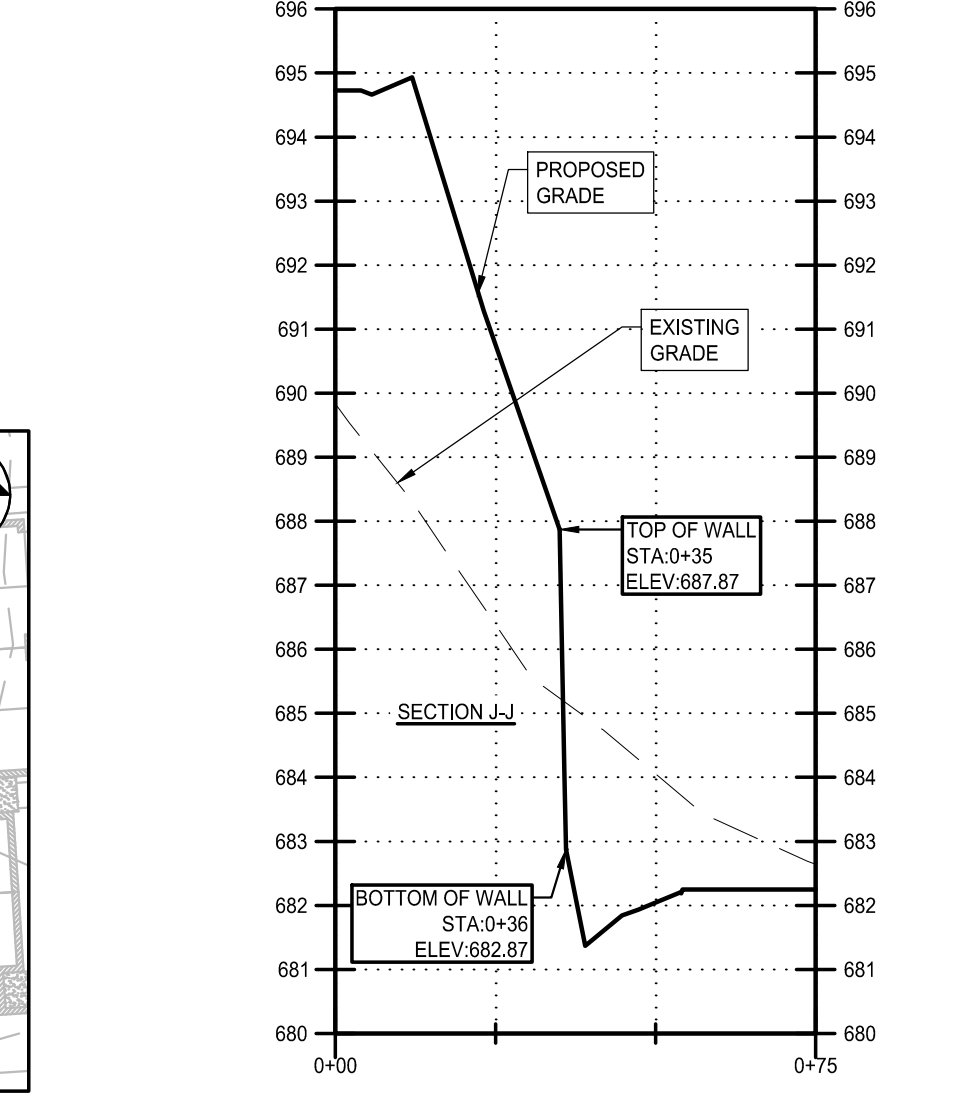
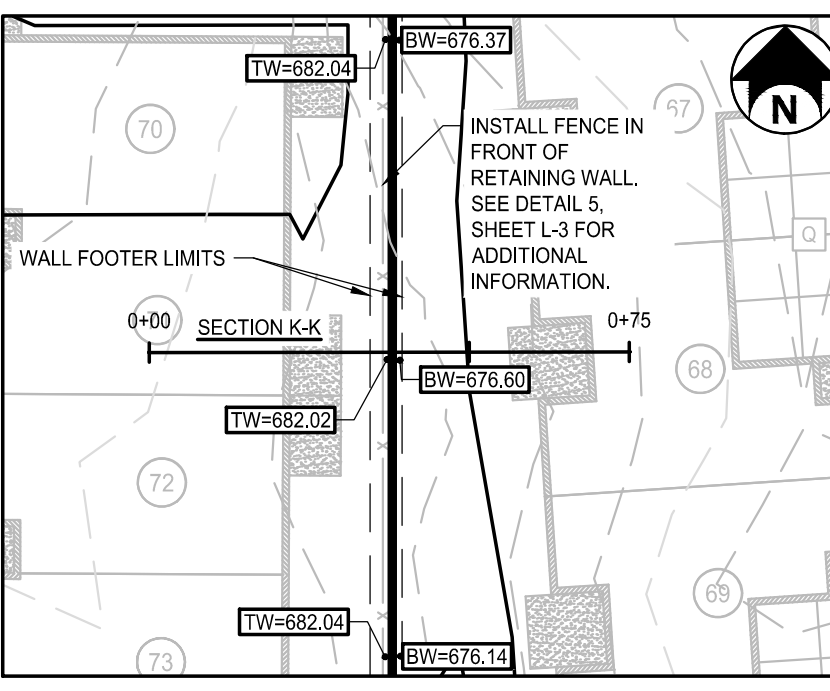
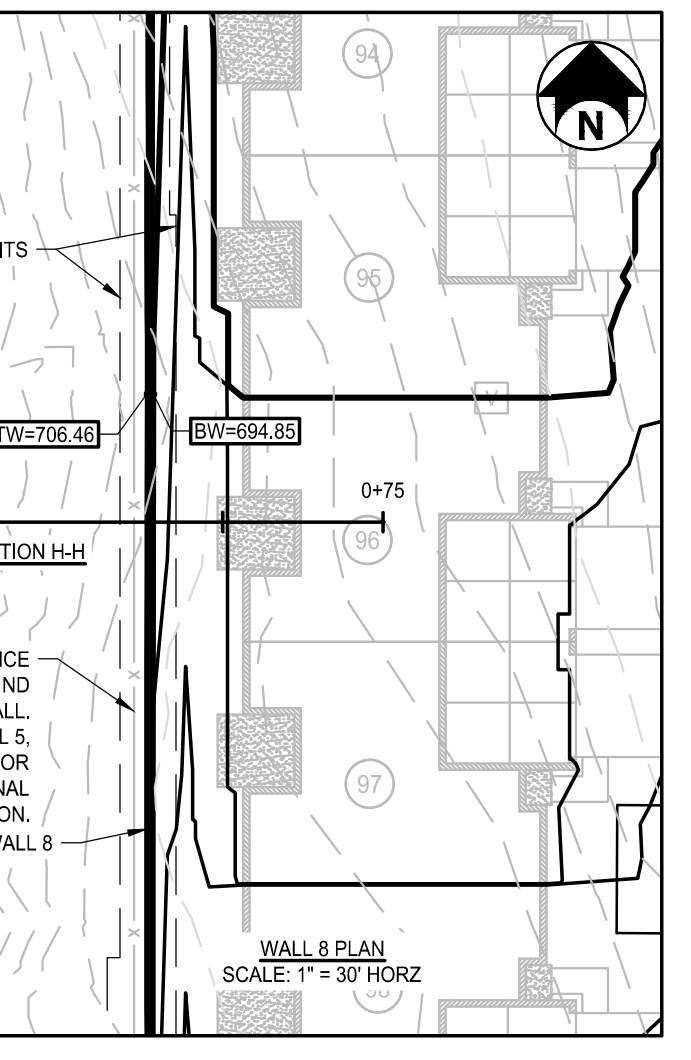
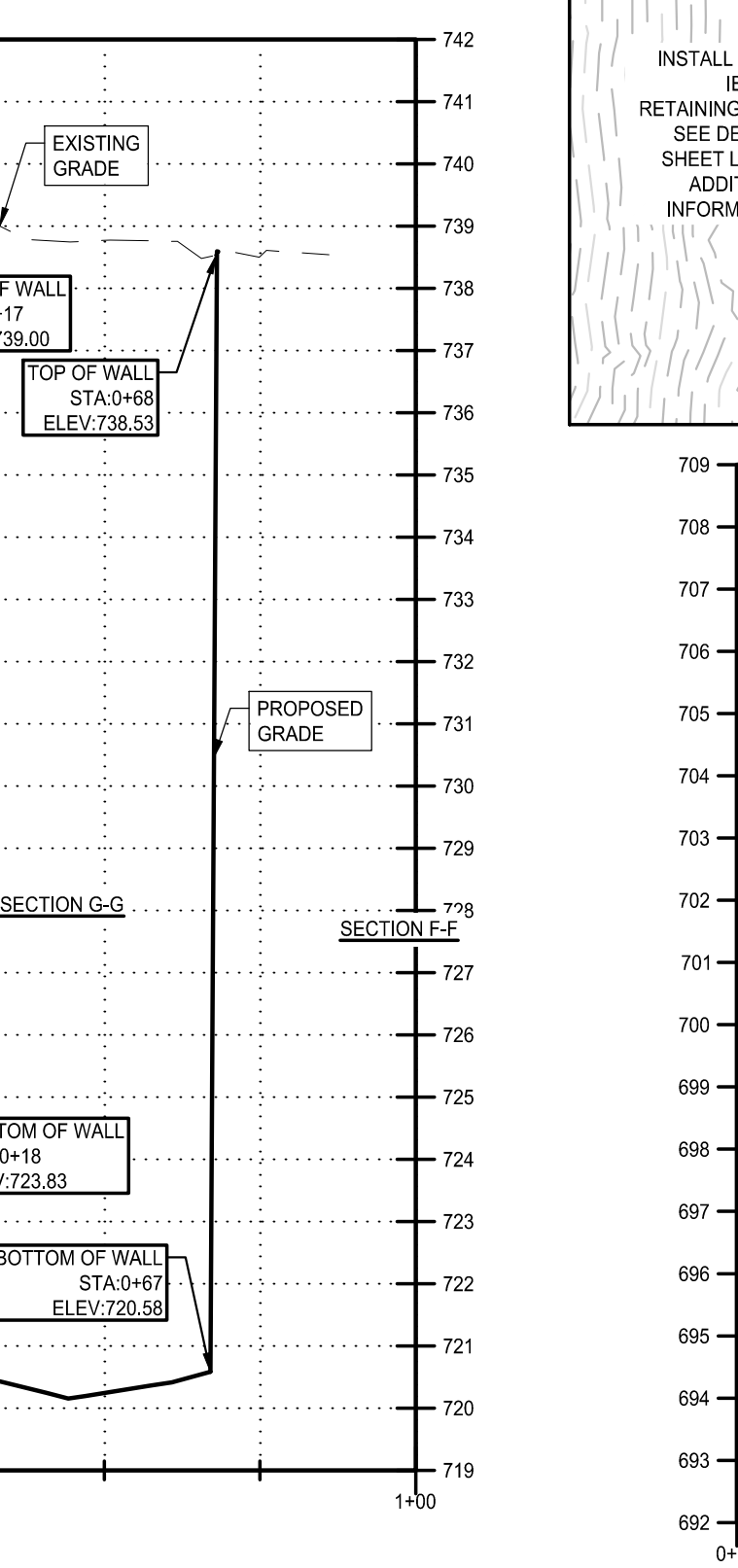
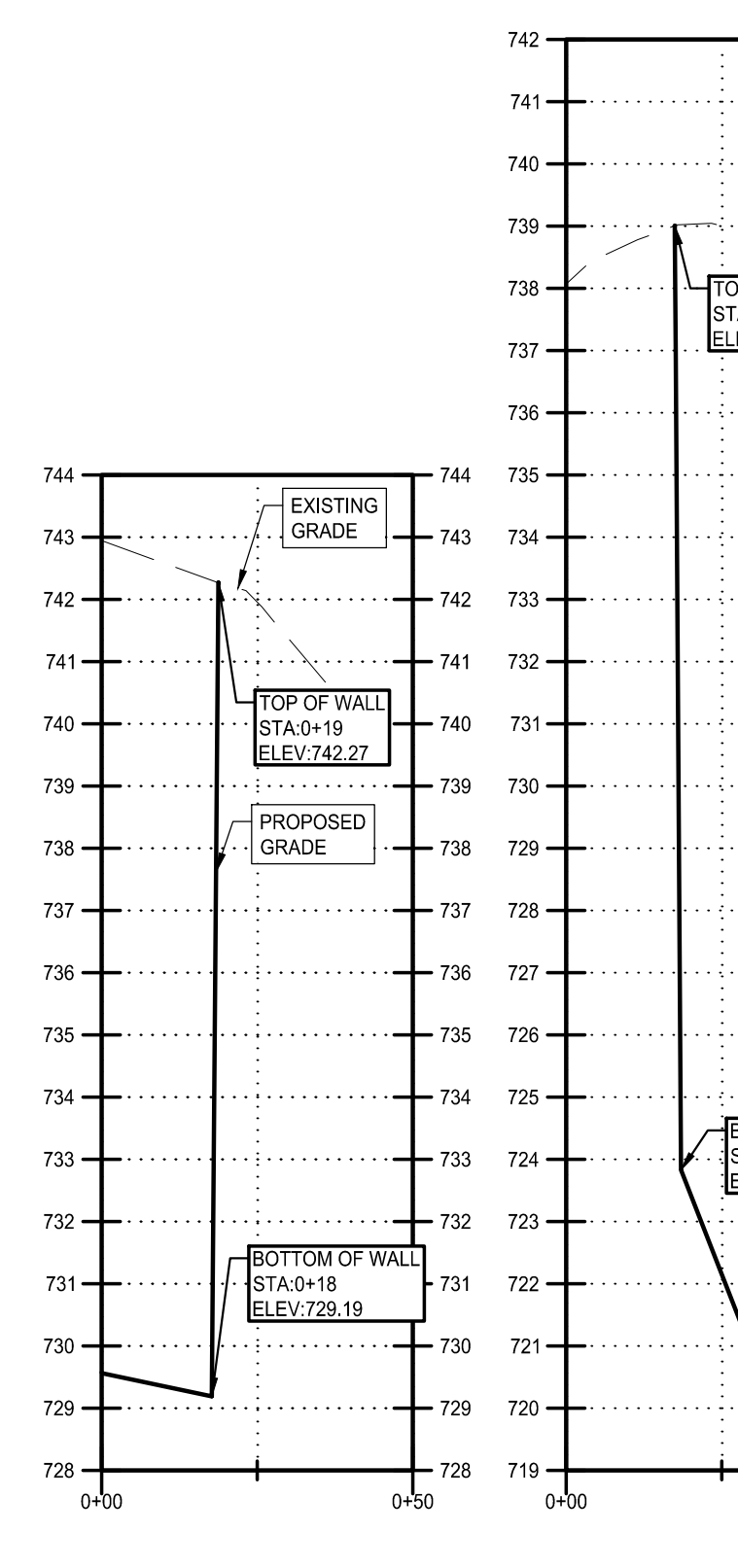
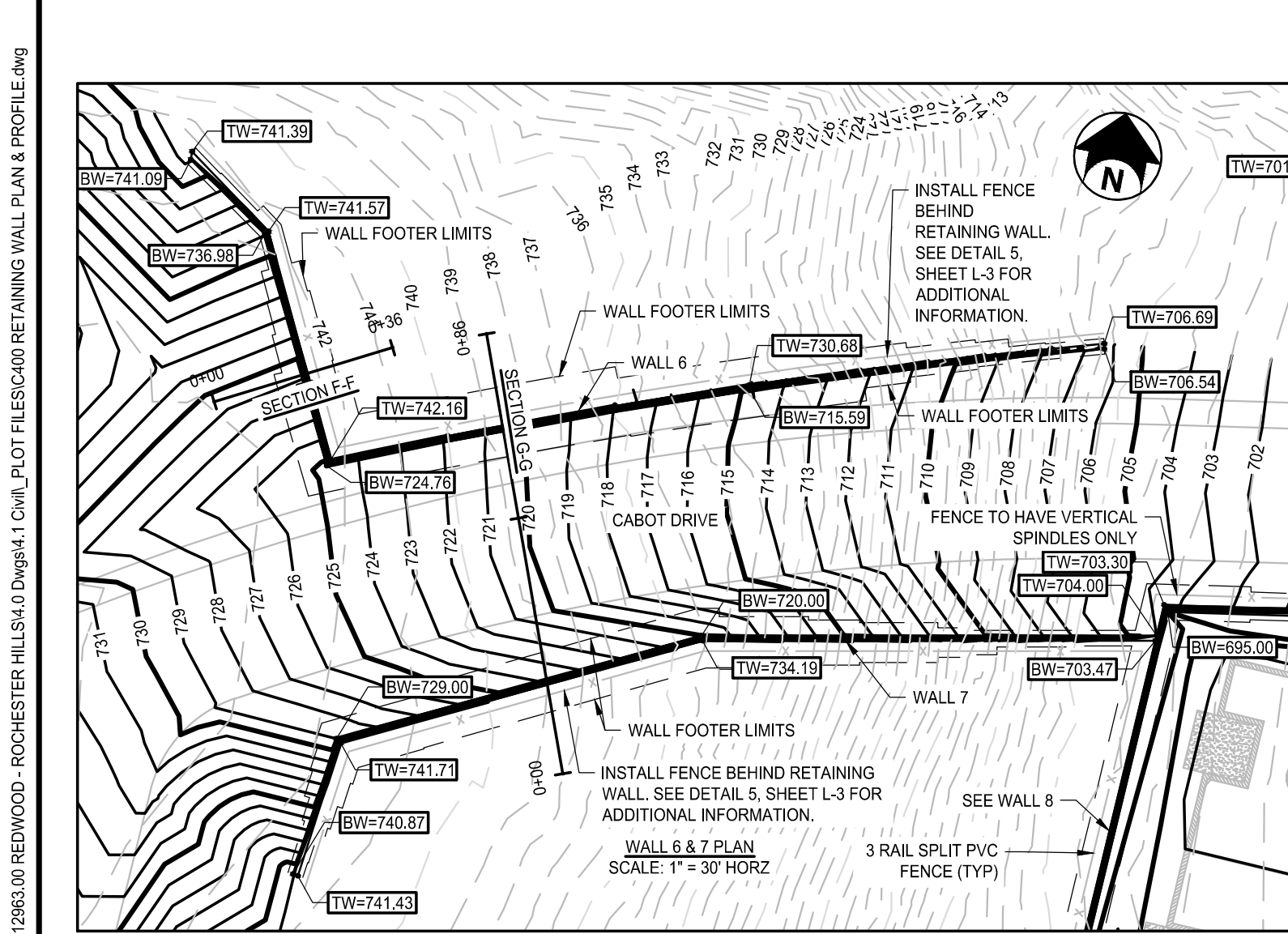
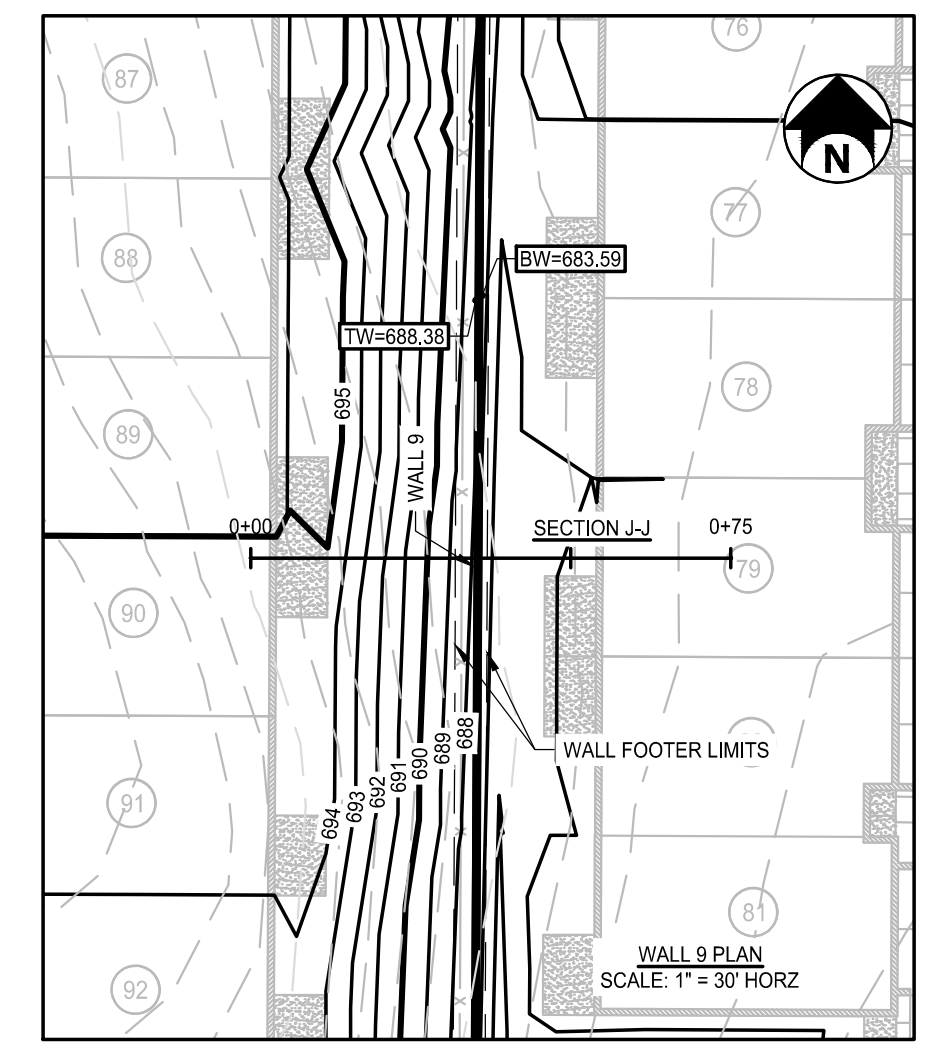
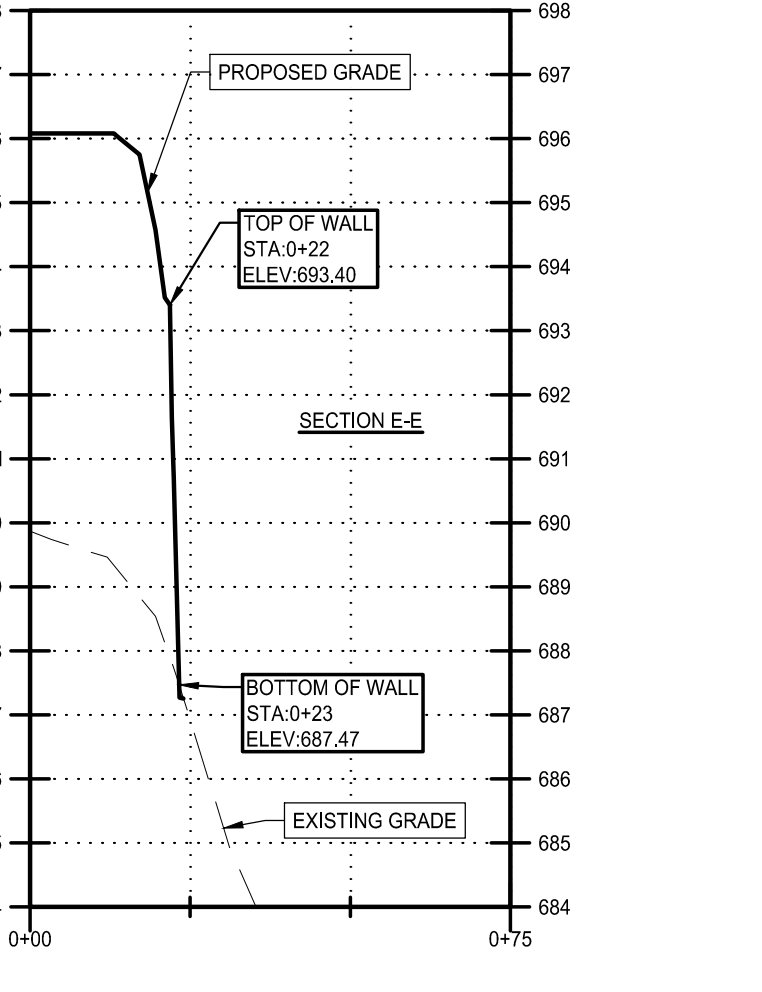
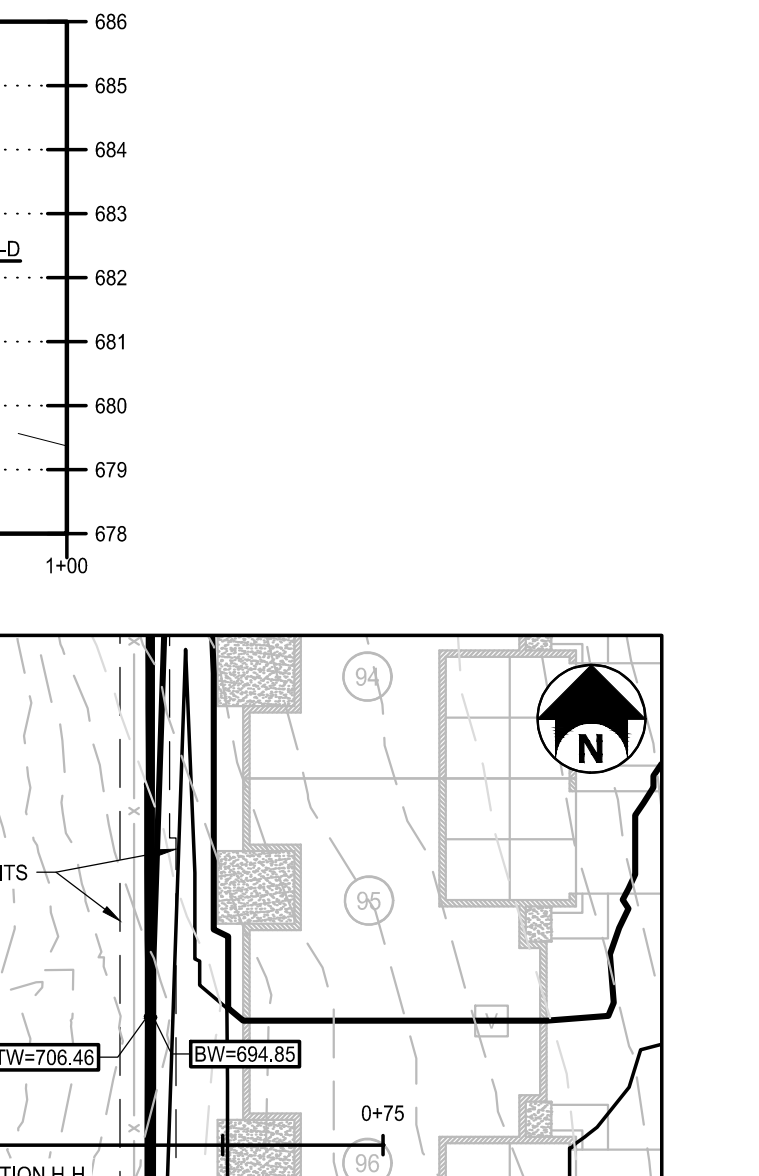
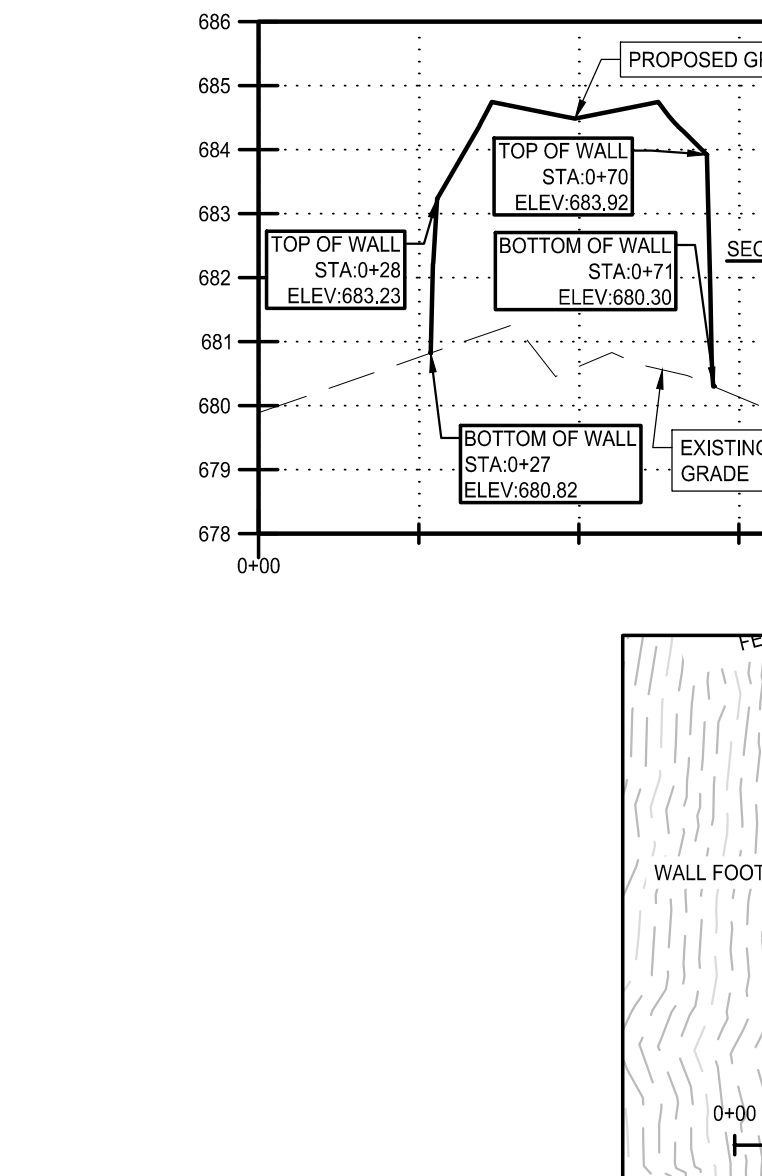
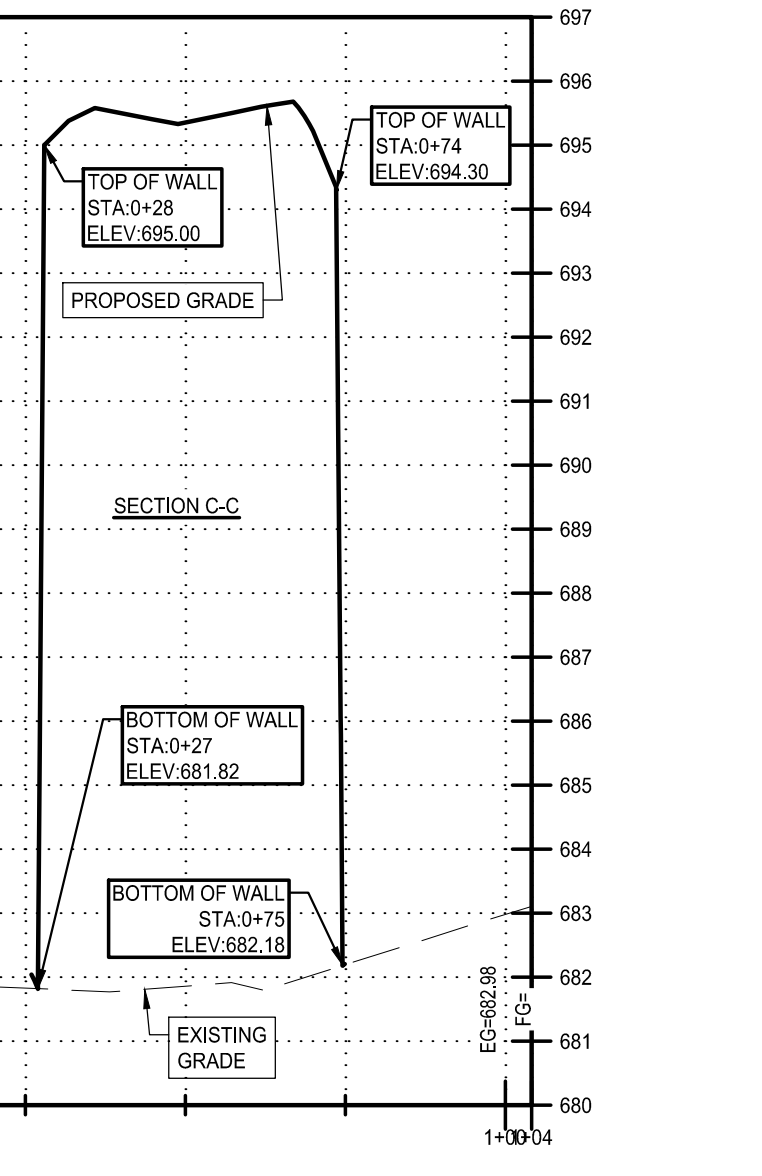
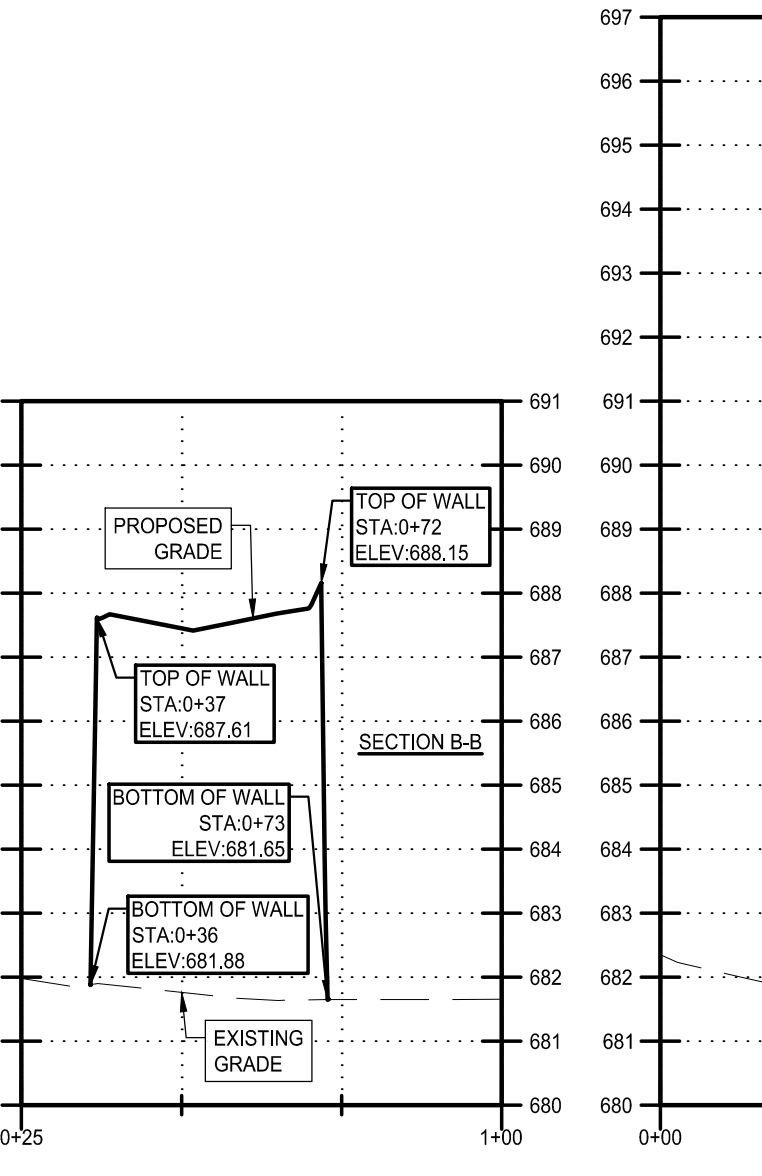
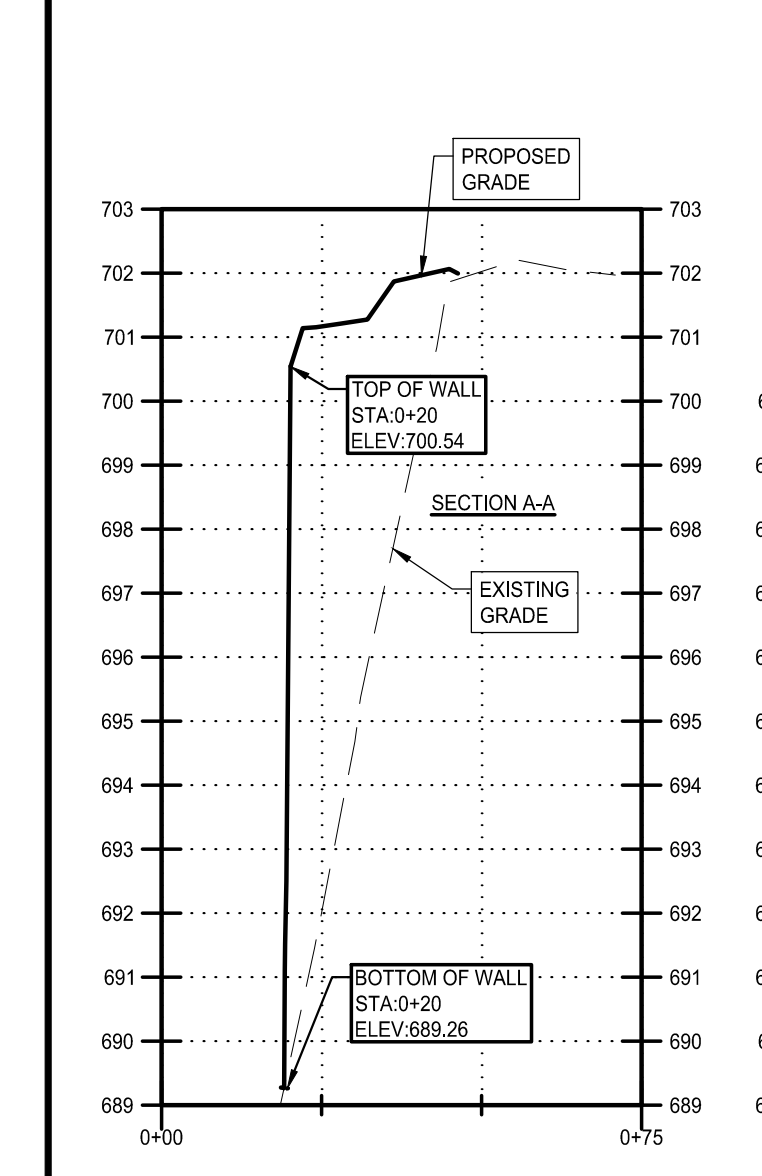
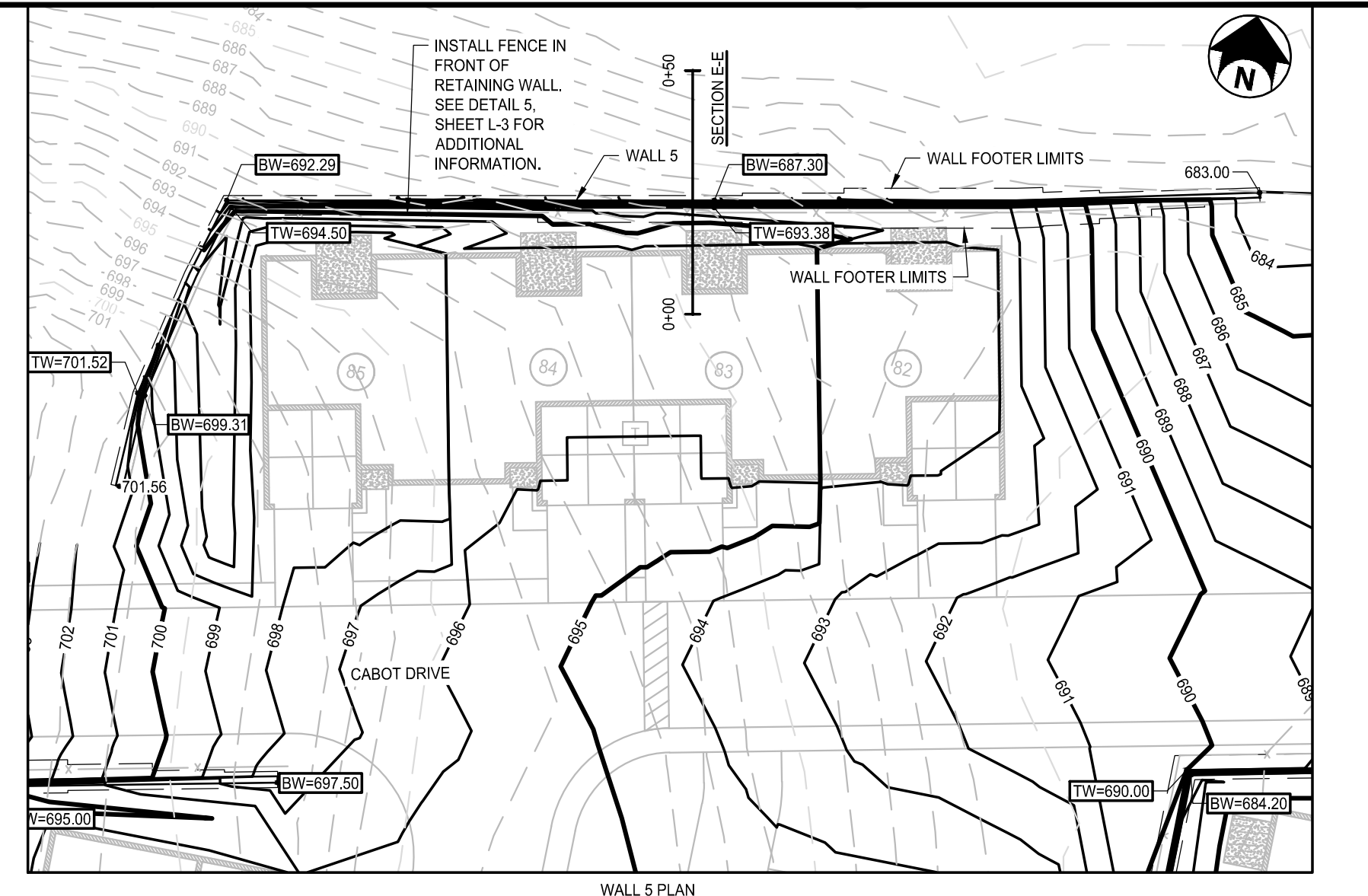
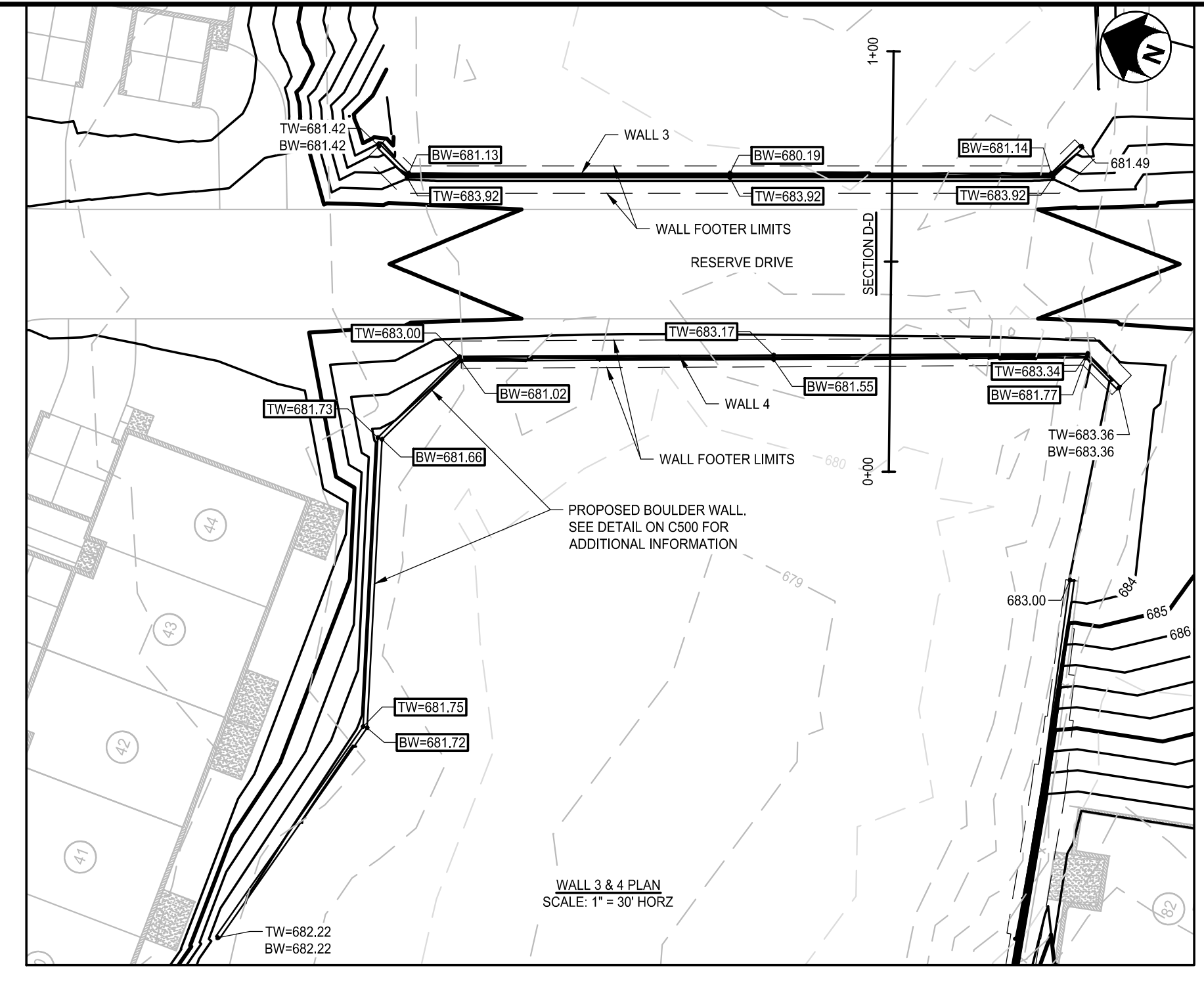
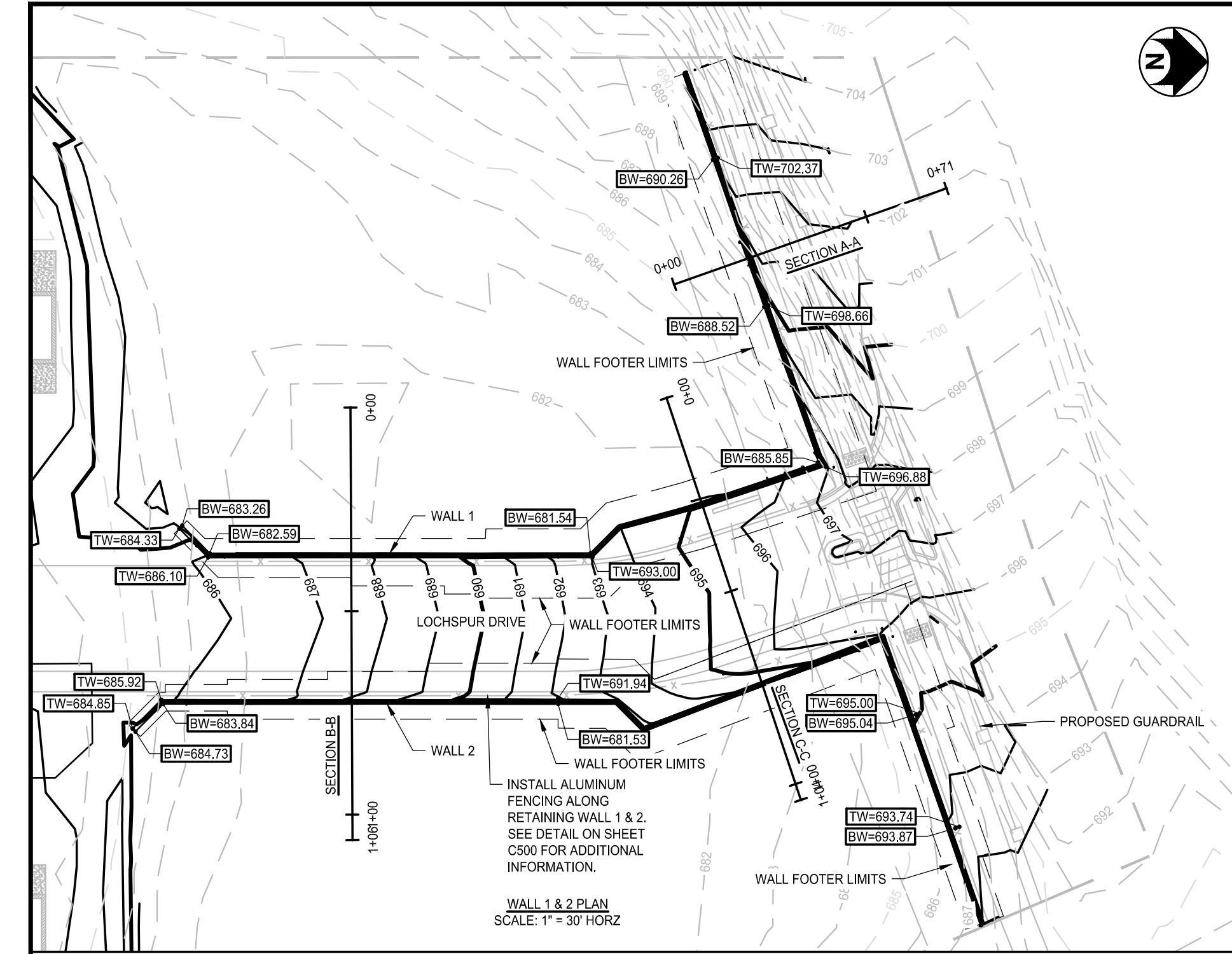


7510 E. PLEASANT VALLEY RD
INDEPENDENCE, OH 44131



Bergmann Associates, Architects, Engineers,
Landscape Architects & Surveyors, D.P.C.
7050 West Saginaw Hwy.
Suite 200
Lansing, MI 48917
office: 517.272.9835
fax: 517.272.9836
www.bergmannpc.com

DATE	DESCRIPTION
11/16/2018	PUD REVIEW
02/04/2019	REV. PER CITY COMMENTS
03/21/2019	2ND REV. PER CITY COMMENTS
08/02/2019	3RD REV. PER CITY COMMENTS
08/22/2019	4TH REV. PER CITY COMMENTS
08/27/2019	STEP ONE PUD REVIEW
12/23/2019	CITY RESUBMITTAL
01/17/2020	PERMIT REVIEW
03/02/2020	ENGINEERING RESUBMITTAL
05/06/2020	ENGINEERING RESUBMITTAL
06/09/2020	ENGINEERING RESUBMITTAL
07/06/2020	ENGINEERING RESUBMITTAL



Not For Construction

Copyright © Bergmann Associates, Architects, Engineers,
Landscape Architects & Surveyors, D.P.C.

Project Manager: P. FURTAW, PE	Checked By: P. FURTAW, PE
Designed By: I. GRAHAM, PE	Drawn By: I. GRAHAM, PE
Date Revisd: NOVEMBER 9, 2018	Project Number: 12963.00

RETAINING WALL PLAN & PROFILE

C400