

CONSERVATION EASEMENT EXHIBIT

PART OF THE NORTH 1/2 OF SECTION 1, T.3N., R.11E.,
CITY OF ROCHESTER HILLS, OAKLAND COUNTY, MICHIGAN

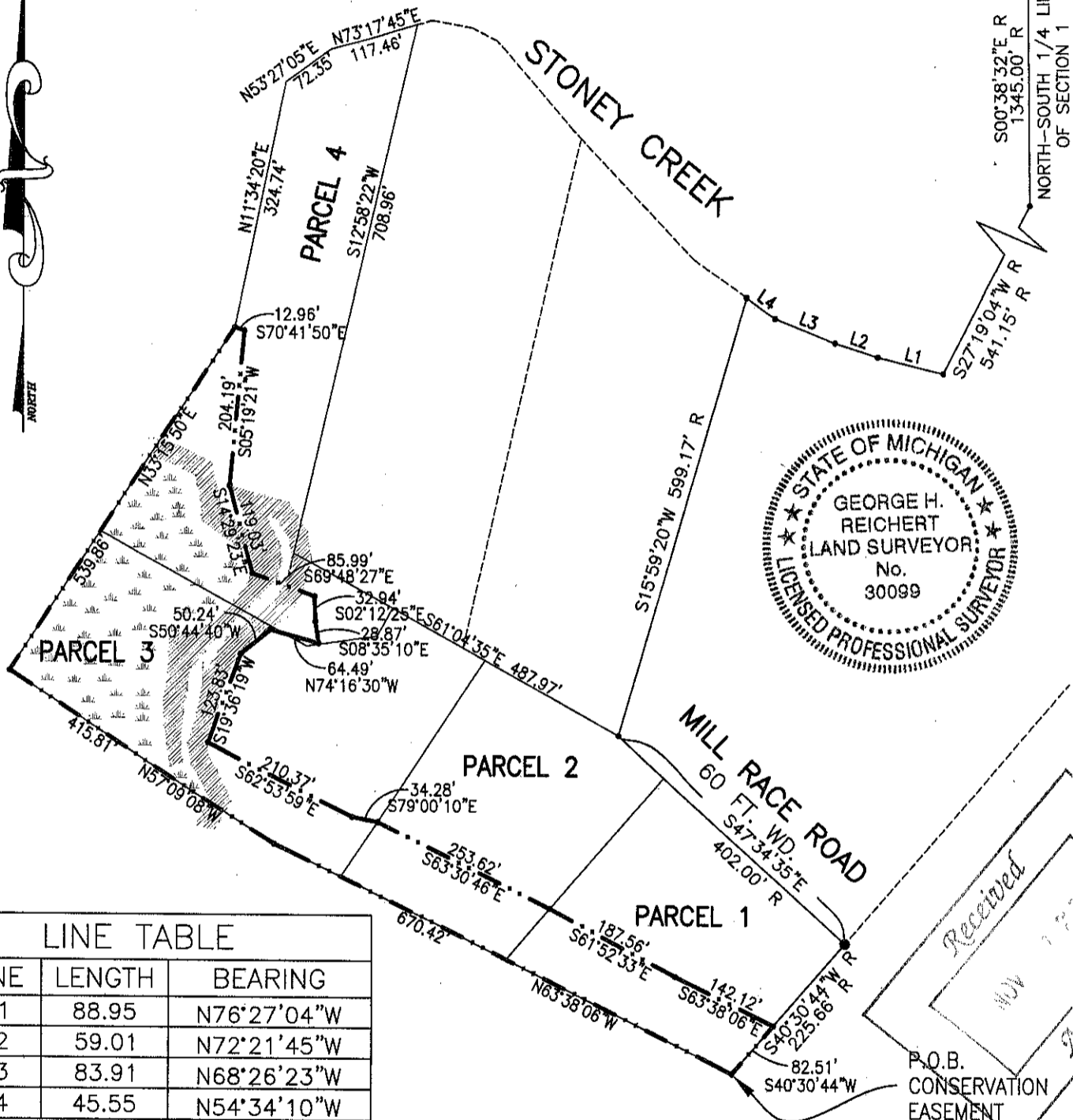
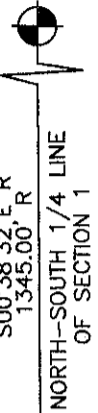
GRAPHIC SCALE



(IN FEET)

1 INCH = 200 FT.

NORTH 1/4 CORNER
SECTION 1, T.3N., R.11E.,
CITY OF ROCHESTER HILLS



LINE TABLE

LINE	LENGTH	BEARING
L1	88.95	N76°27'04"W
L2	59.01	N72°21'45"W
L3	83.91	N68°26'23"W
L4	45.55	N54°34'10"W

I HEREBY CERTIFY THAT I HAVE SURVEYED AND MAPPED THE LAND DESCRIBED ABOVE ON OCT. 13, 2004 AND THAT THE RATIO OF CLOSURE OF THE UNADJUSTED FIELD OBSERVATIONS OF SUCH SURVEY WAS GREATER THAN 1:10,000 AND THAT ALL OF THE REQUIREMENTS OF PUBLIC ACT 132 OF 1970, AS AMENDED, HAVE BEEN COMPLIED WITH.

BASIS OF BEARING: PVIOUS SURVEY BY JAMES H. BUCKERFIELD AS RECORDED IN LIBER 6034, PAGE 11 THRU 13, O.C.R.

PREPARED FOR:
WINKLER MILL INC.
6420 CORNERSTONE LANE
ROCHESTER HILLS, MI 48306
(248) 217-2647

SHEET 1 OF 2

GEORGE H. REICHERT P.S. #30099

Scale: 1"=200'
Date: 10/11/05
Job No. 04-168

REICHERT SURVEYING INC.

140 FLUMERFELT LANE
ROCHESTER, MICH. 48306
TELE: (248) 651-0592



Land
Surveying

Received
Assessor

P.O.B.
CONSERVATION
EASEMENT