

LIBER 39289 PG 419

LEGEND

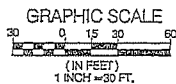
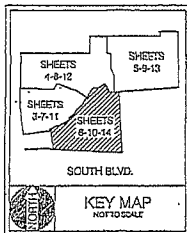
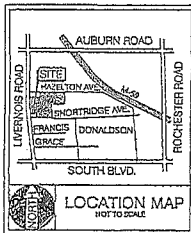
- GAS LINE
- WATERMAIN
- HYDRANT
- GATE VALVE, TAPPING SLEEVE & VALVE
- SANITARY SEWER
- SANITARY MANHOLE
- STORM SEWER
- STORM SEWER MANHOLE
- CATCH BASIN
- INLET (NO INCOMING LINES)
- YARD CATCH BASIN
- YARD INLET
- END SECTION

RIGHT OF WAY NOTE

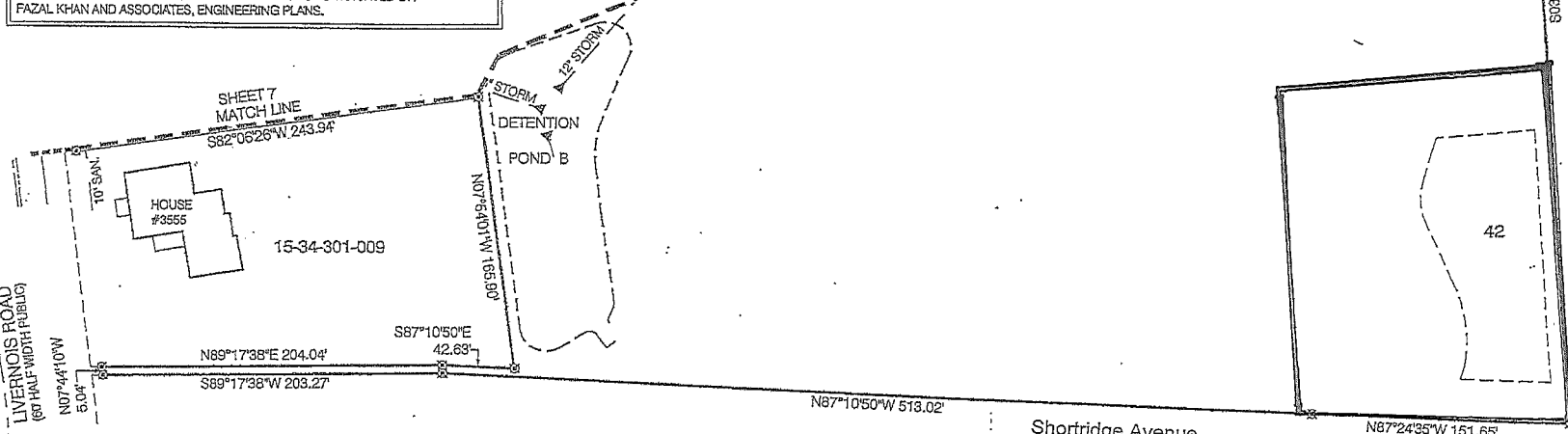
ROAD RIGHTS OF WAY TO BE DEDICATED AS PUBLIC ROADS UPON ACCEPTANCE BY THE CITY OF ROCHESTER HILLS

NOTES

1. GAS, ELECTRIC, TELEPHONE AND CABLE LINES ARE NOT SHOWN ON THESE PLANS BUT WILL BE INSTALLED IN COMPLIANCE WITH UTILITY COMPANY PLANS.
2. UTILITIES SHOWN ARE APPROXIMATE LOCATIONS AS INDICATED ON FAZAL KHAN AND ASSOCIATES, ENGINEERING PLANS.



OPEN SPACE A  
238,078 SQ.FT.  
5.47 ACRES



Donald H. King 6-18-07  
PROPOSED 06-18-07

PROJECT	10
DATE	06-18-07
DESIGNED BY	J.A.E./R.C.T.
CHECKED BY	J.A.E./R.C.T.
DATE	06-18-07
PROJECT	10
DATE	06-18-07
DESIGNED BY	J.A.E./R.C.T.
CHECKED BY	J.A.E./R.C.T.
DATE	06-18-07
PROJECT	10

UTILITY PLAN

HICKORY RIDGE OF ROCHESTER HILLS  
 15-34-301-003