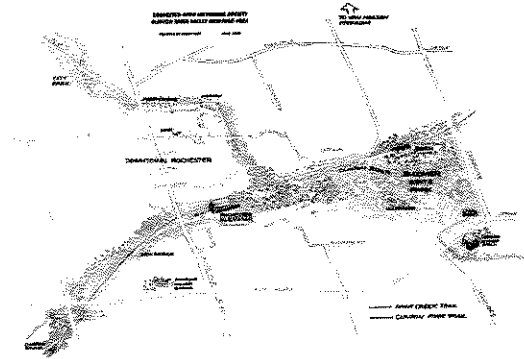


The vision: Clinton River Valley Heritage Area

Moving the Rochester Elevator is the first phase of a larger initiative to create a historic tourist destination along the Clinton River Valley.

At its new location, the elevator will be one of the historic landmarks included in the Clinton River Valley Heritage Area.



(See larger map on next page.)

The Clinton River Valley Heritage Area also will include one of the Parke-Davis barns, a covered bridge to be constructed on the Clinton River Trail, the Rochester College barn, the Yates Cider Mill and the historic elements of Bloomer Park.

This initiative is intended to establish a focus on history in Rochester and Rochester Hills, generate economic activity and educate residents and foster appreciation of our historic resources.

Phases of the vision

Creation of the Clinton River Valley Heritage Area will take several years, implementing a series of phases:

- Phase I: Relocation of the Rochester Elevator
- Phase II: Elevator adaptive reuse
- Phase III: Construction of the covered bridge
- Phase IV: Parke-Davis barn relocation
- Phase V: Link to the Van Hoosen Farm site
- Phase VI: Connection to the Rochester College farmstead site

The total projected cost will be \$1,780,000 to \$2,280,000.

Hold the elevator!

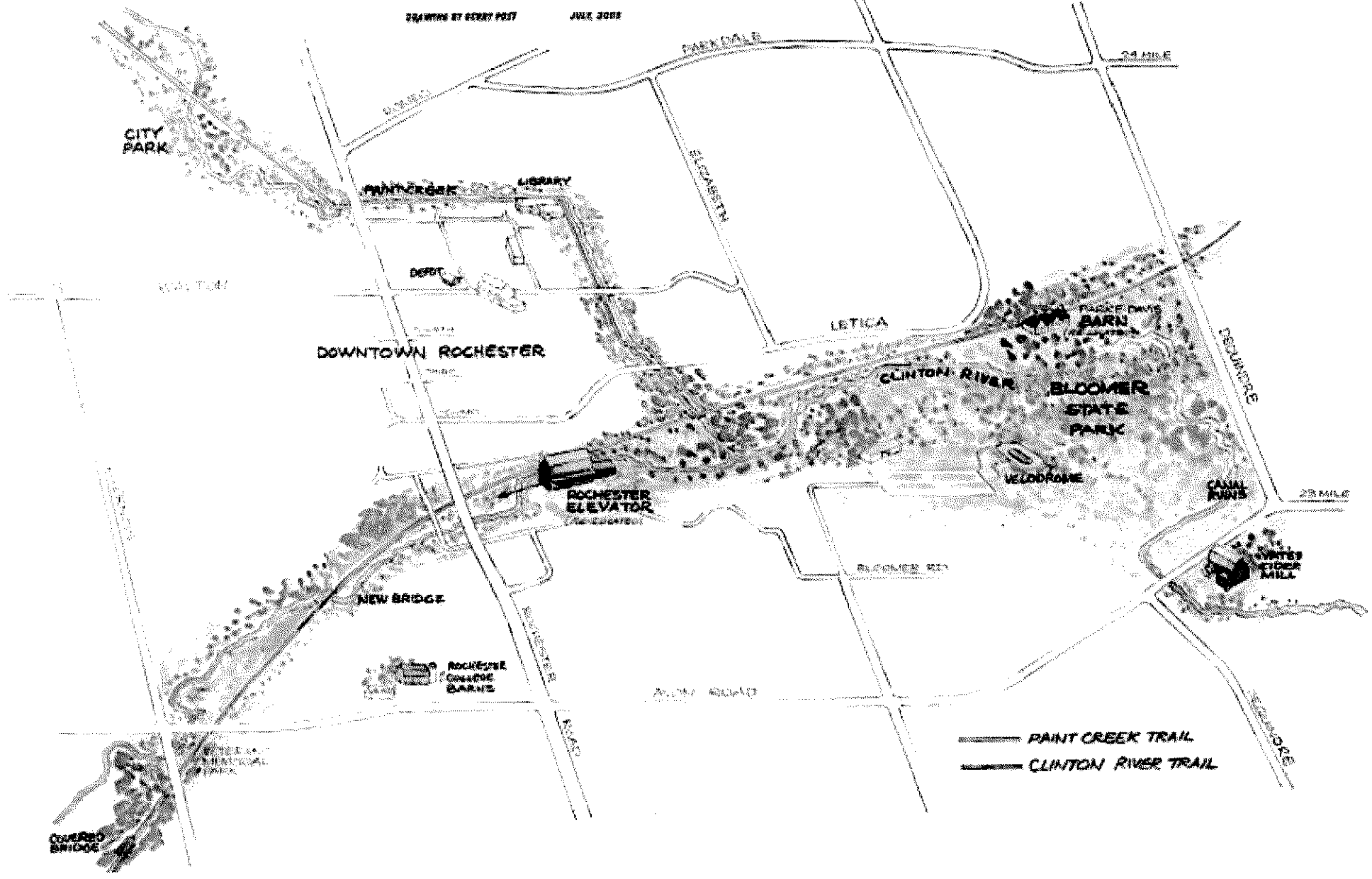
Rochester-Avon Historical Society
PO Box 80783
Rochester, MI 48308-0783

<http://holdelevator.ne1.net>

holdelevator@comcast.net

**ROCHESTER-AVON HISTORICAL SOCIETY
CLINTON RIVER VALLEY HERITAGE AREA**

DRAWING BY GERRY POST JULY 2012



==== PAINT CREEK TRAIL
==== CLINTON RIVER TRAIL

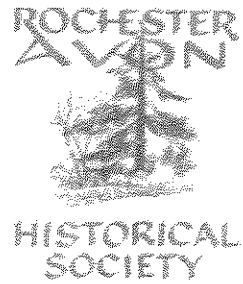
About Hold the elevator!

Hold the elevator! is a group of volunteers dedicated to saving, relocating and rehabilitating the Rochester Elevator. The group is part of the **Rochester-Avon Historical Society**, which has supported and advanced the many facets of historical resources in Rochester and Rochester Hills since 1969.

Rochester-Avon Historical Society

Because appreciation of the present is enhanced by understanding the past, the Rochester-Avon Historical Society helps to preserve, collect and interpret the history of the greater Rochester area for present and future generations. We believe that:

- By educating our citizens about their heritage, we celebrate our democratic way of life and instill an appreciation of our history.
- By perpetuating our past through the preservation of historic resources, we maintain a rich diversity in our community life.
- By respecting and restoring architectural integrity of structures and by conserving neighborhood environments, we preserve the unique character and document the historical evolution of the place in which we live.



Hold the elevator!

Rochester-Avon Historical Society
PO Box 80783
Rochester, MI 48308-0783

<http://holdelevator.ne1.net>

holdelevator@comcast.net

Vision: Clinton River Valley Heritage Area

Action: Create a historic tourist destination point along the Clinton River Valley.

- **Establishes a focus on history in Rochester**
- **Generates economic activity**
- **Educates residents and creates appreciation for our historic resources**

Vision: Clinton River Valley Heritage Area

Key Elements:

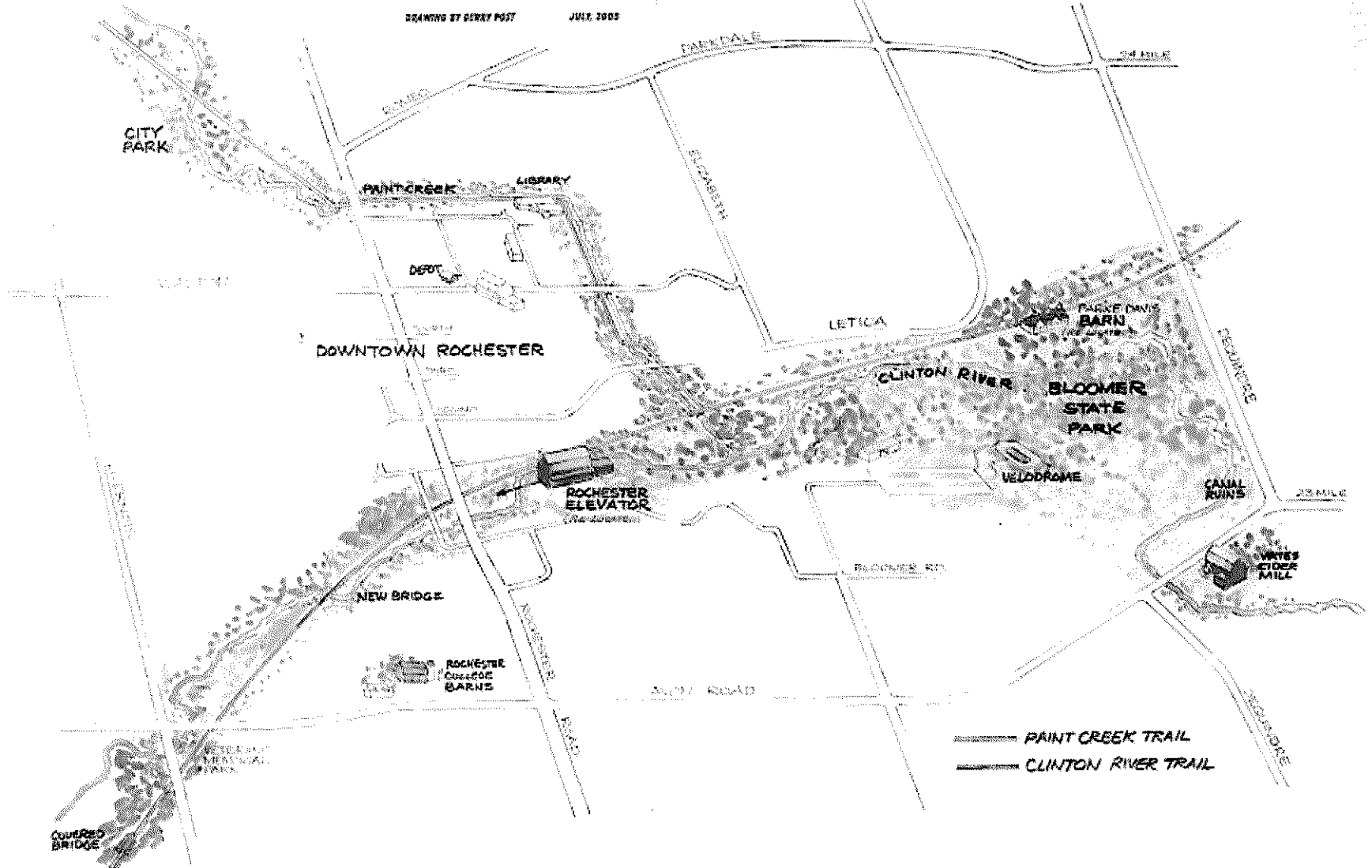
- Veterans Memorial Pointe**
- Covered bridge**
- Rochester College Barn**
- Rochester Elevator**
- Rochester Paper Mill**
- Parke Davis Barn**
- Clinton Kalamazoo Canal ruins**
- Stone shelter**
- Yates Cider Mill**

Vision: Clinton River Valley Heritage Area

ROCHESTER-AVON HISTORICAL SOCIETY
CLINTON RIVER VALLEY HERITAGE AREA

DRAWING BY DEEVEY POST JULY, 2003

↑
TO VAN HOOSEN
MUSEUM



—— PAINT CREEK TRAIL
—— CLINTON RIVER TRAIL

Clinton River Valley Heritage Area *Phases*

Phase I:

Relocation of the Rochester Elevator



Clinton River Valley Heritage Area *Phases*

Phase II:

**Rochester
Elevator
adaptive
reuse**



Rochester Elevator
Preliminary Concept
Specialty Shops with Housing and/or Offices above

Clinton River Valley Heritage Area *Phases*

Phase III:

Covered Bridge



Clinton River Valley Heritage Area *Phases*

Phase IV:

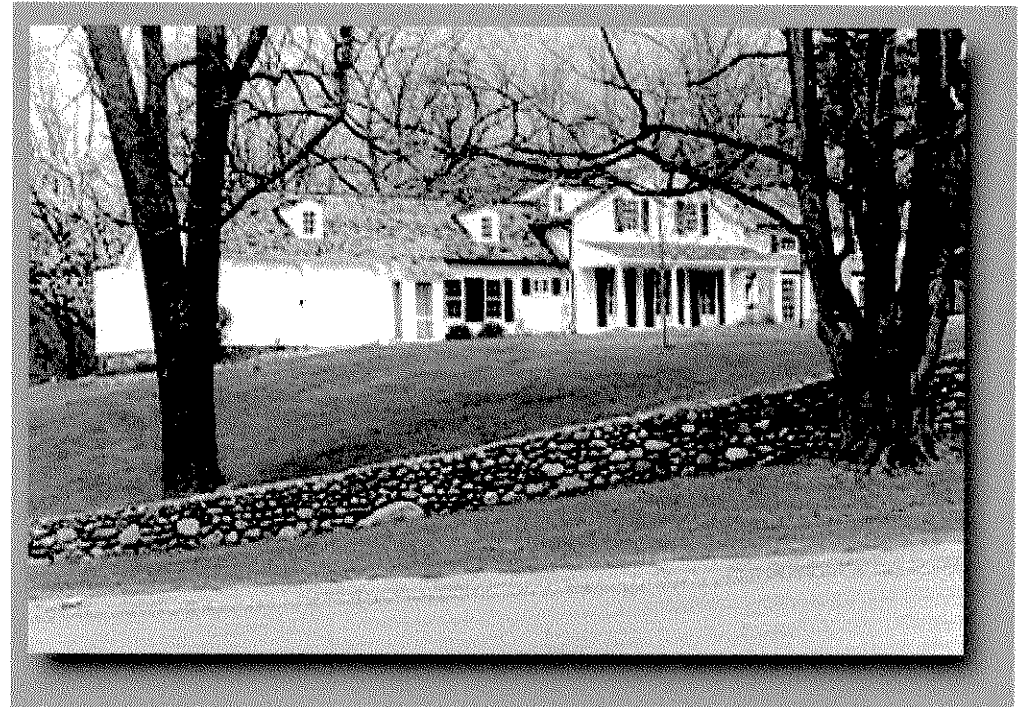
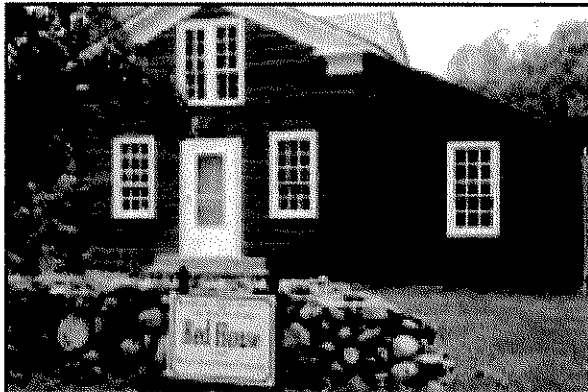
Parke Davis Barn Relocation



Clinton River Valley Heritage Area *Phases*

Phase V:

**Link to Van Hoosen
farm site**



Clinton River Valley Heritage Area *Phases*

Phase VI:

Connection to Rochester College farmstead site



Clinton River Valley Heritage Area

Projected Cost of Phases:

Phase	Cost
Elevator Move	\$150,000
Elevator Adaptive Re-Use	\$1,000,000
Covered Bridge	\$100,000
Parke Davis Barn Relocation	\$500,000-\$1,000,000
Van Hoosen Link	\$20,000
College Farmstead Connection	\$10,000
Total	\$1,780,000 - \$2,280,000