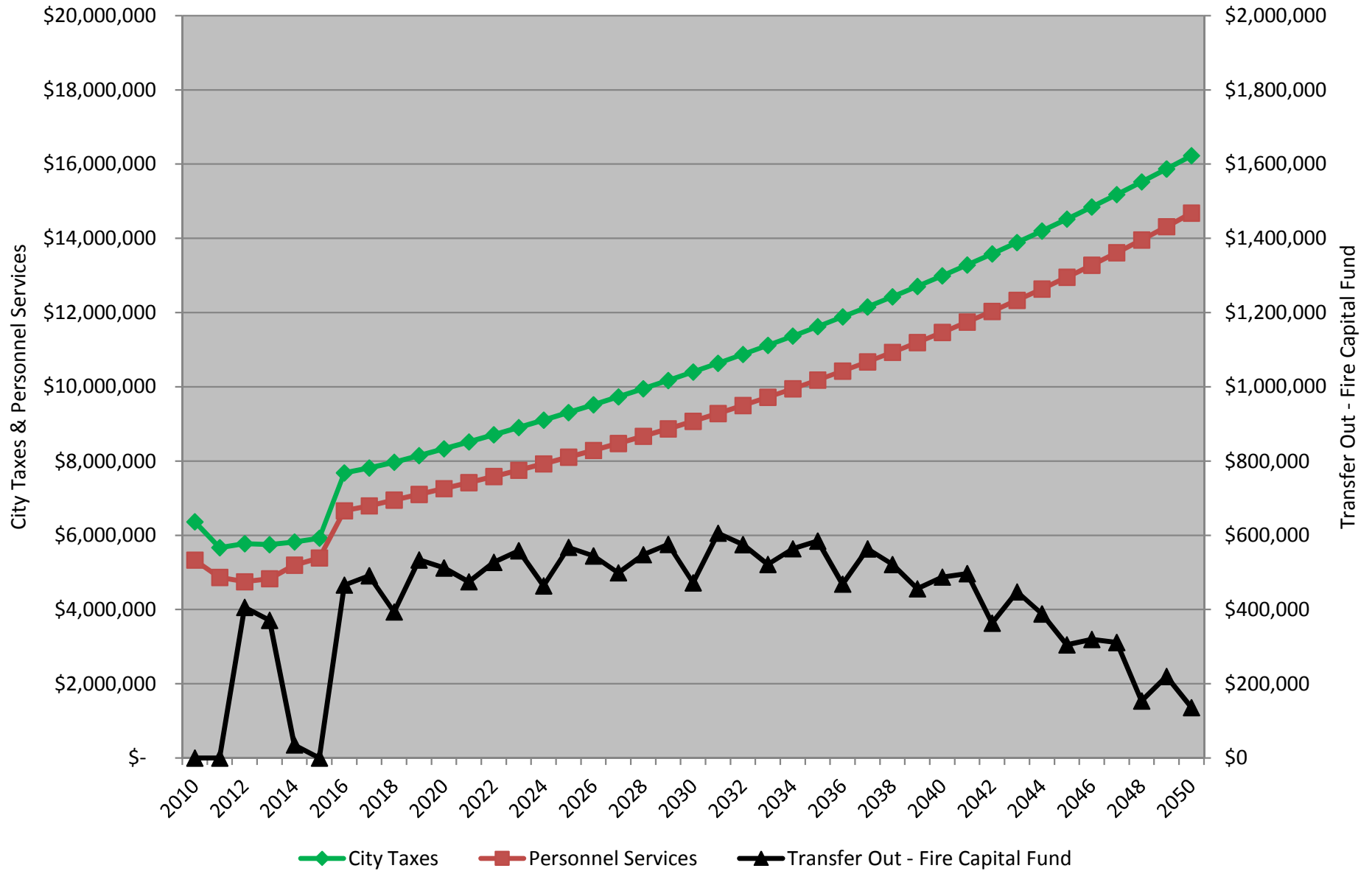
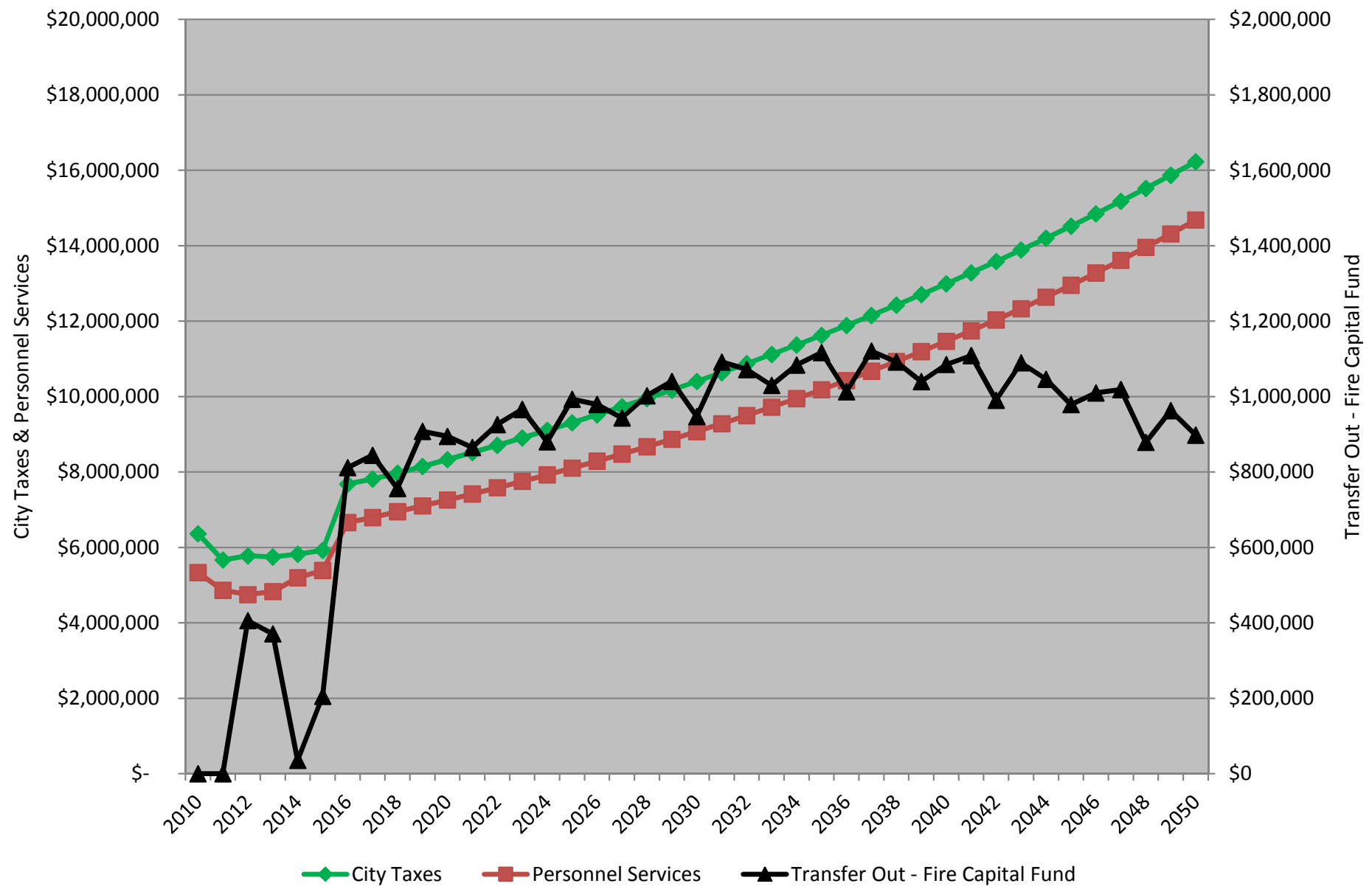


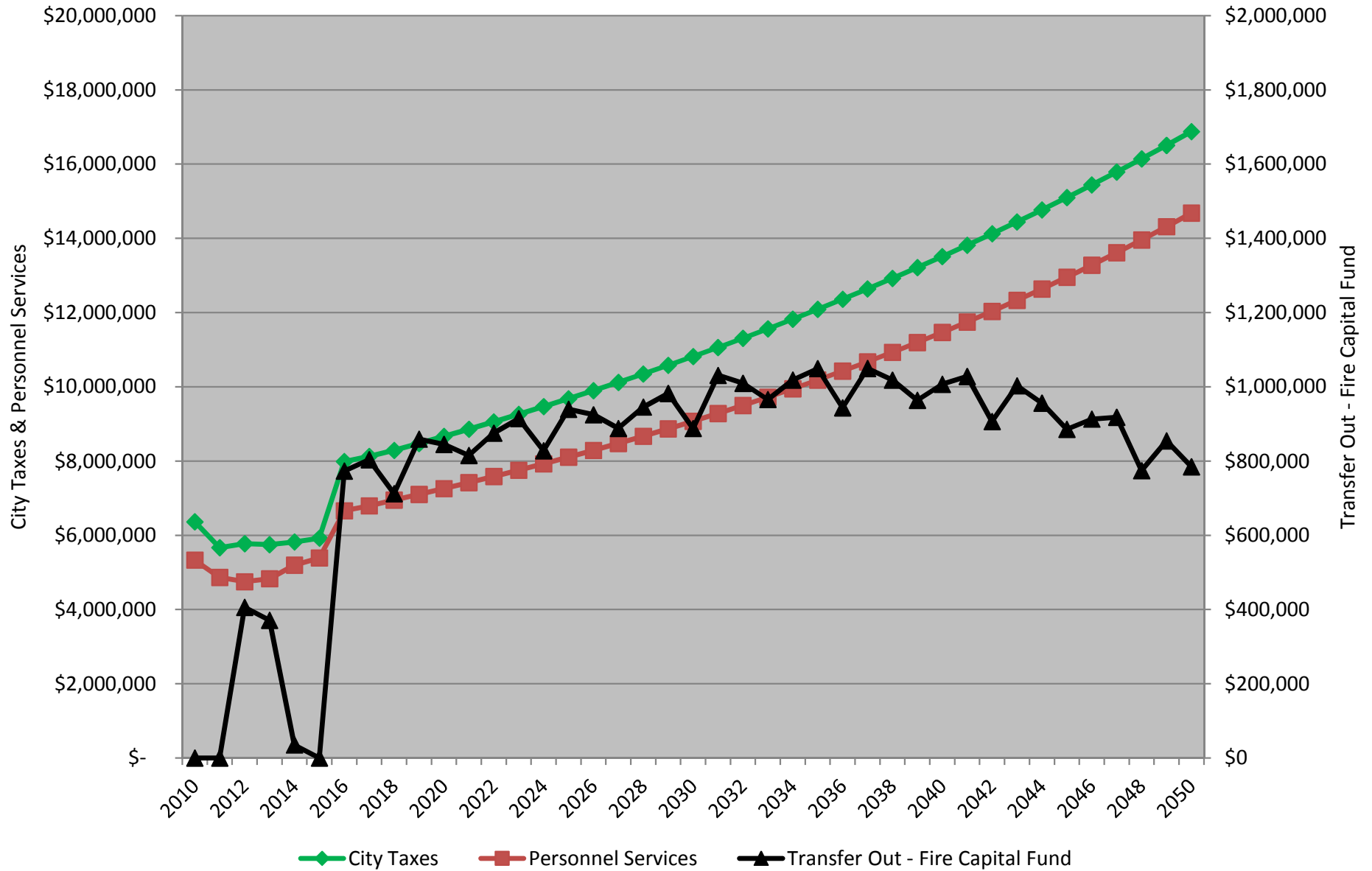
206 - Fire Operating Fund (2.5 mill levy - Hire 9 New FTFF)



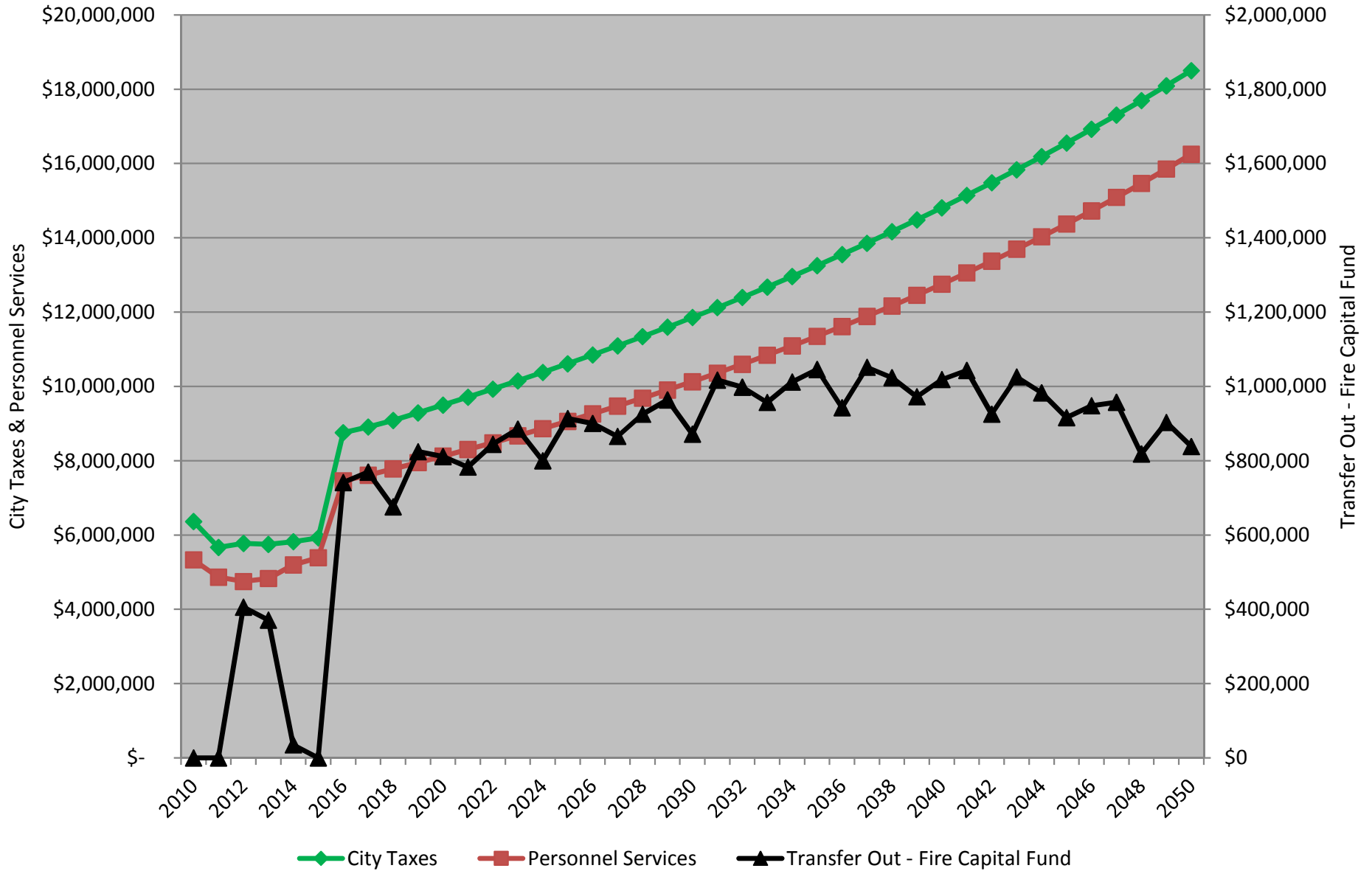
206 - Fire Operating Fund (2.5 mill levy - Hire 9 New FTFF / 95% of Budget)



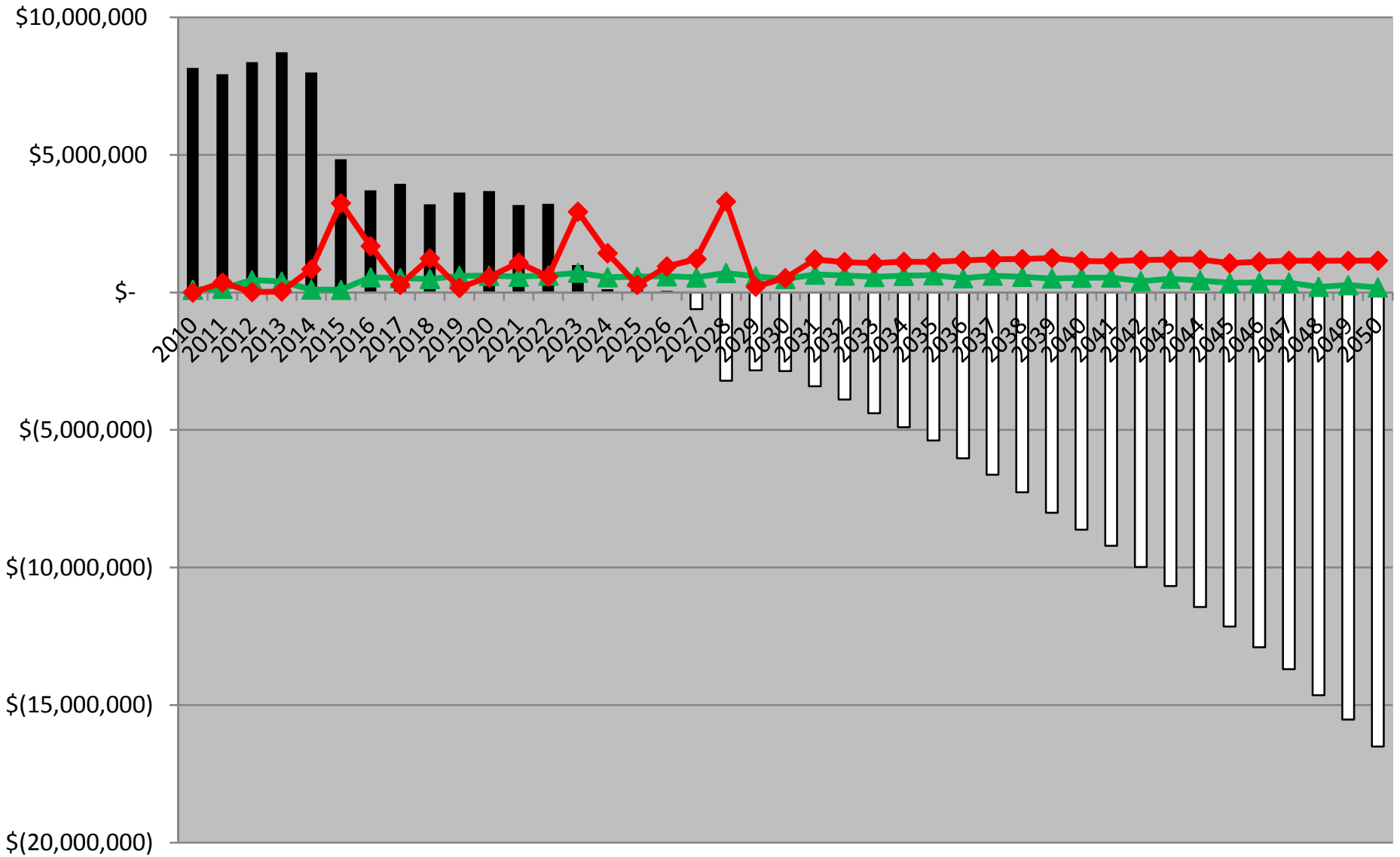
206 - Fire Operating Fund (2.6 mill levy - Hire 9 New FTFF)



206 - Fire Operating Fund (2.85 mill levy - Hire 15 New FTFF)



402 - Fire Capital Fund (2.5 mill levy - Hire 9 New FTFF)

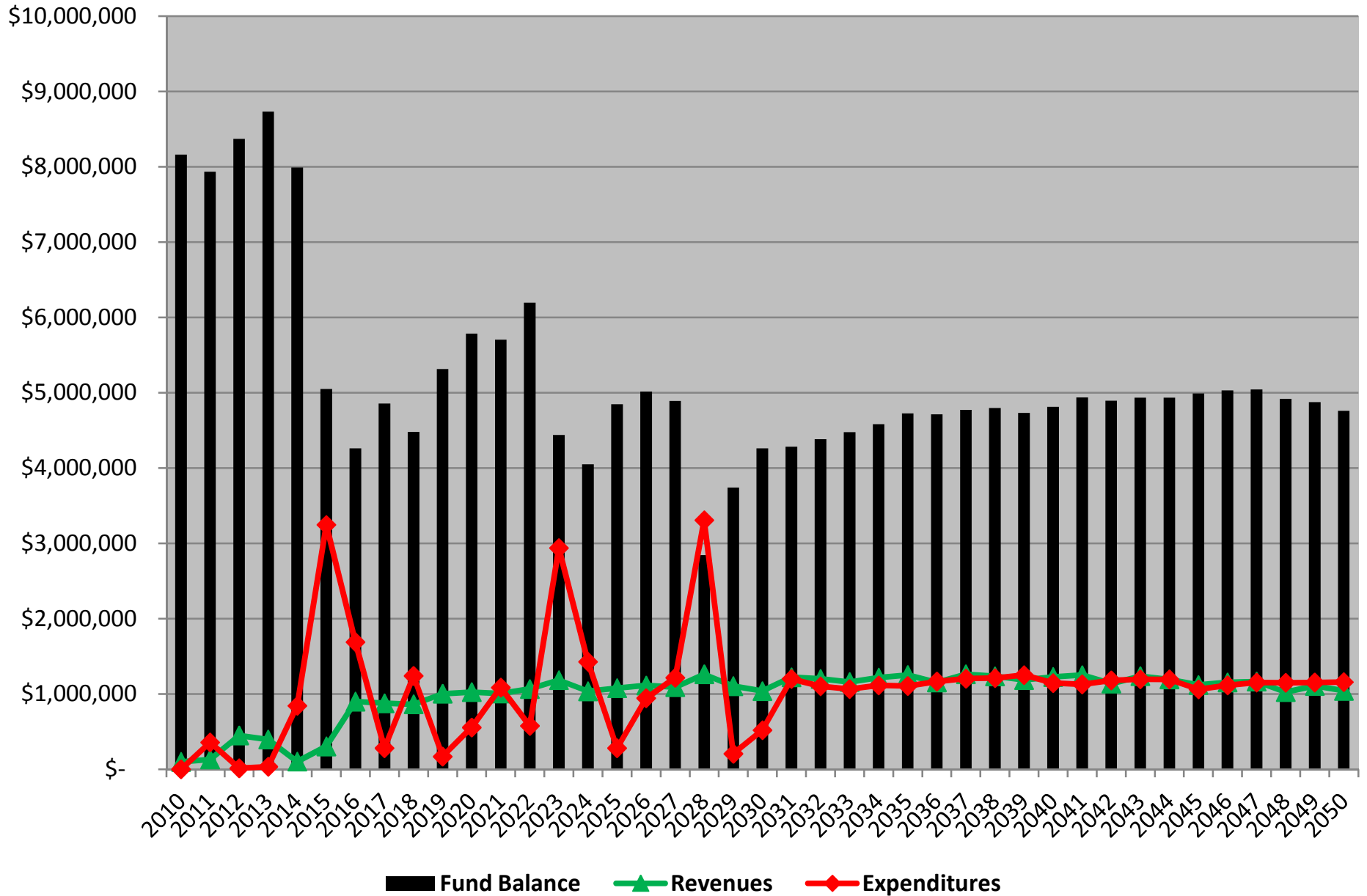


Fund Balance

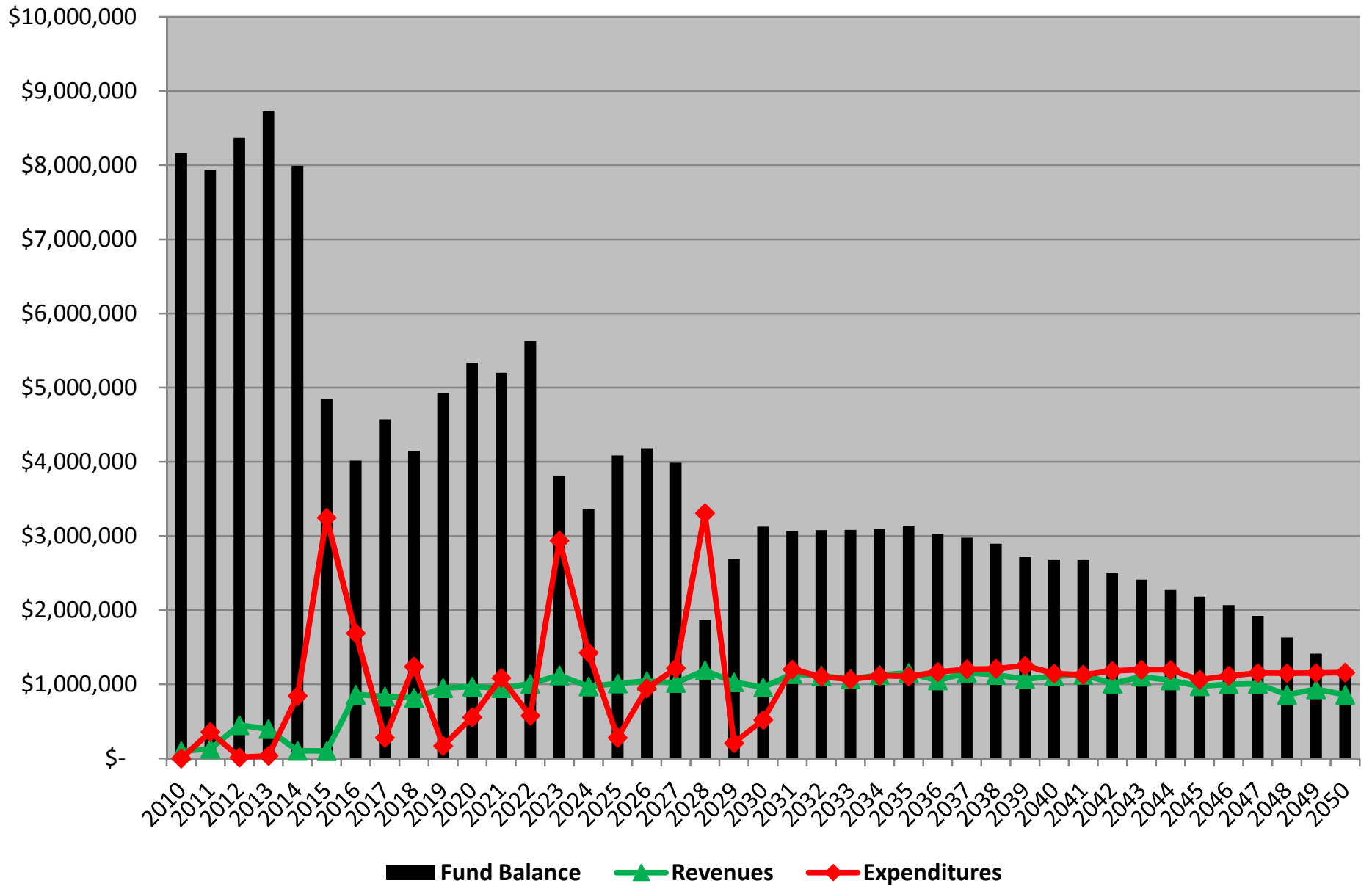
▲
 Revenues

◆
 Expenditures

402 - Fire Capital Fund (2.5 mill levy - Hire 9 New FTFF / 95% of Budget)



402 - Fire Capital Fund (2.6 mill levy - Hire 9 New FTFF)



402 - Fire Capital Fund (2.85 mill levy - Hire 15 New FTFF)

