

Memo

From
ELEANA KAY MANN

To Planning Commission

Addendum to letter
dated 10/17/2014
questioning impact
of proposed development
on water table along
Sargent's Creek.

To: Planning Commission re: proposed development along Sargent's Creek.



Info Analysis: 62 LCM: 1

Help

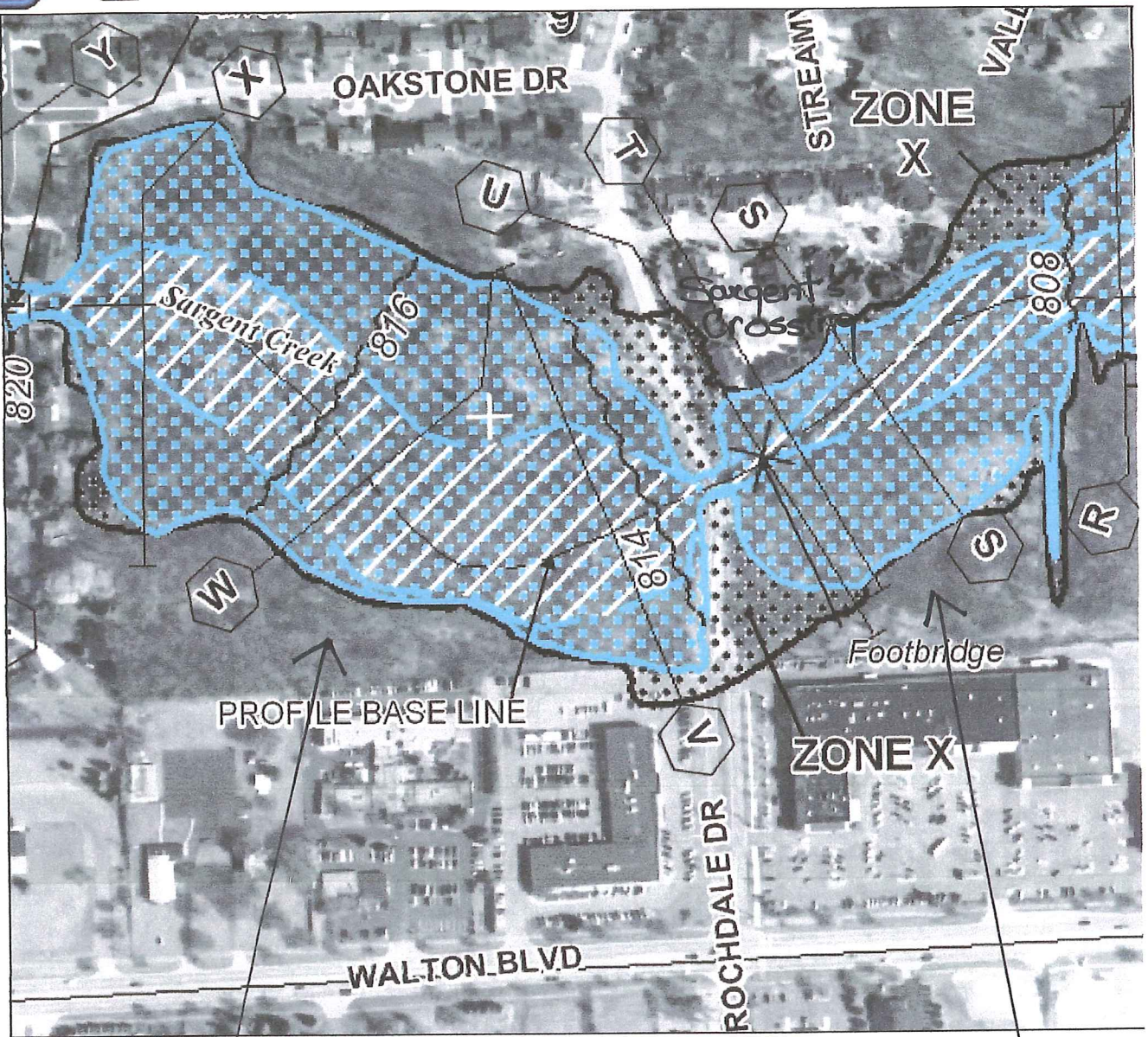
Zoom Win Pan

Zoom In Zoom Out

1:1 MAX

Zoom In Zoom Out

Make a FIRMette



proposed development

proposed development

FEMA flood plain