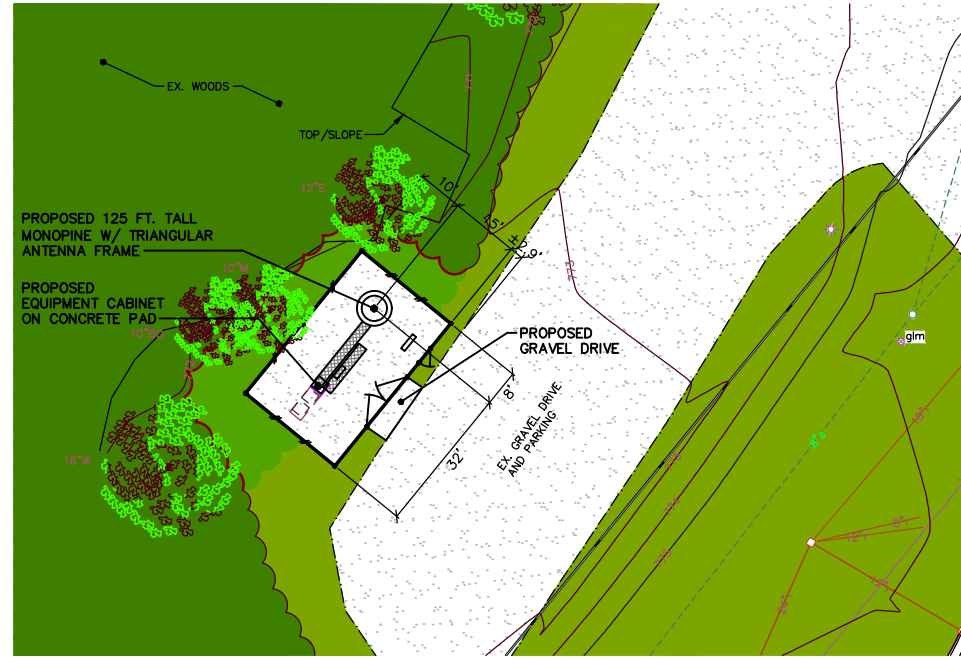


R:\0404\1274A\0404-1274A-CR1.dwg, 8/25/2019 10:39 AM, Scott G. Fisher, None
 Copyright © 2019 Midwestern Consulting L.L.C. All rights reserved. No part of this drawing may be used or reproduced in any form or by any means, or stored in a database or retrieval system, without prior permission of Midwestern Consulting L.L.C.



PROPOSED LOCATION #1
 SCALE: 1"=20'

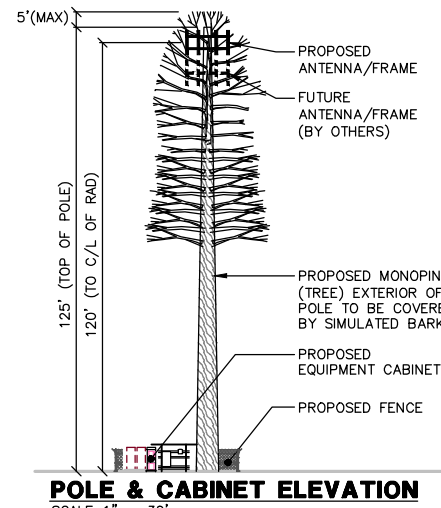


LEGEND

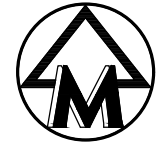
- 778 EXIST. CONTOUR
- 778 PROP. CONTOUR
- x778.2 EXIST. SPOT ELEVATION
- 778.20x PROP. SPOT ELEVATION
- o- U.P. EXIST. UTILITY POLE
- OH EXIST. OVERHEAD UTILITY LINE
- * EXIST. LIGHT POLE
- EXH EXIST. HYDRANT
- GV EXIST. GATE VALVE IN BOX
- CB EXIST. CATCH BASIN OR INLET
- SS EXIST. SANITARY SEWER
- TR TELEPHONE RISER
- T SINGLE TREE
- TLB TREE OR BRUSH LIMIT
- PLB PROP. TREE OR BRUSH LIMIT
- oFIR FOUND IRON ROD
- oFIR CONTROL PT.

TREE LEGEND

- BO BOX ELDER
- CH CHERRY
- CO COTTONWOOD
- E ELM
- M MAPLE
- W WALNUT



POLE & CABINET ELEVATION
 SCALE 1" = 30'



SCALE: 1" = 40'
 0 40 80 120



MIDWESTERN CONSULTING
 3835 Plaza Drive Ann Arbor, Michigan 48108
 (734) 995-0200 • www.midwesternconsulting.com
 Land Development • Land Survey • Institutional • Municipal
 Wireless Communications • Transportation • Landfill Services



APPLICANT/LESSEE:
 CELCO PARTNERSHIP
 dba VERIZON WIRELESS
 24242 NORTHWESTERN HIGHWAY
 SOUTHFIELD, MICHIGAN 48075
 PHONE: (248) 915-3000

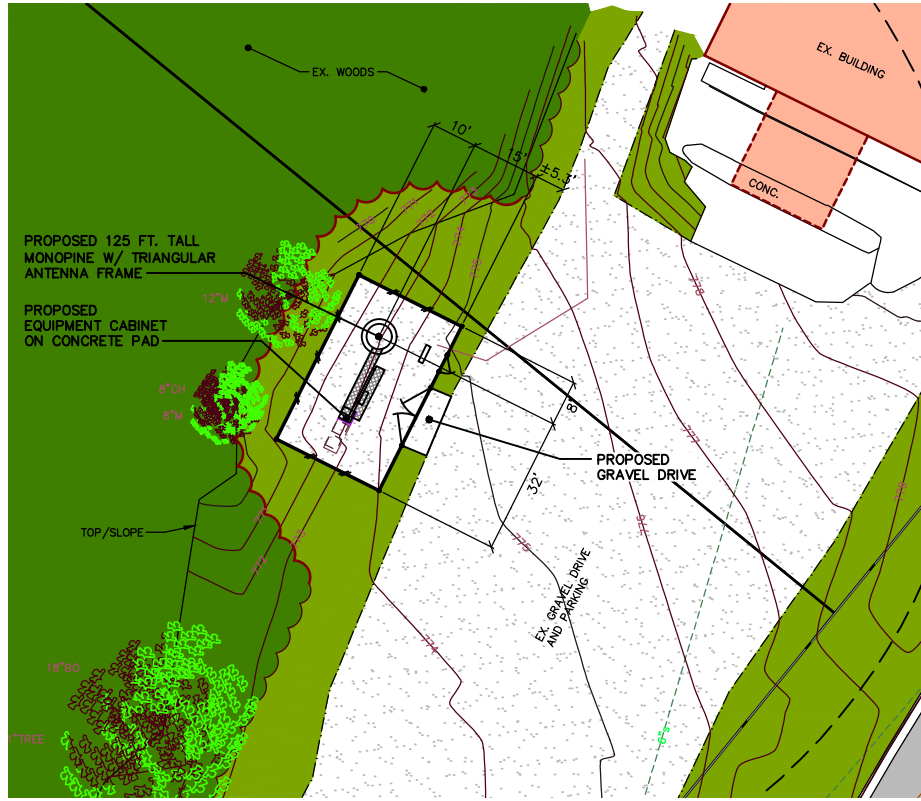
verizon
 SITE #1274 - "TIENKEN & WASHINGTON"
 CITY OF ROCHESTER HILLS, OAKLAND COUNTY, MICHIGAN
 PRELIMINARY SITE PLAN 1

1

DATE: 8/27/19	SHEET 1 OF 1
REV. DATE	CADD: JBB, WAJ
REV. DATE	ENG: SGF
REV. DATE	PK: SGF
REV. DATE	TECH: KMW
REV. DATE	9404-1274A-CR1
REV. DATE	18082019

JOB No. **94044-1274A**

R:\8044\1274A\1274A-01.dwg, 8/25/2019 10:39 AM, Scott G. Fisher, None
 Copyright © 2019 Midwestern Consulting L.L.C. All rights reserved. No part of this drawing may be used or reproduced in any form or by any means, or stored in a database or retrieval system, without prior permission of Midwestern Consulting L.L.C.

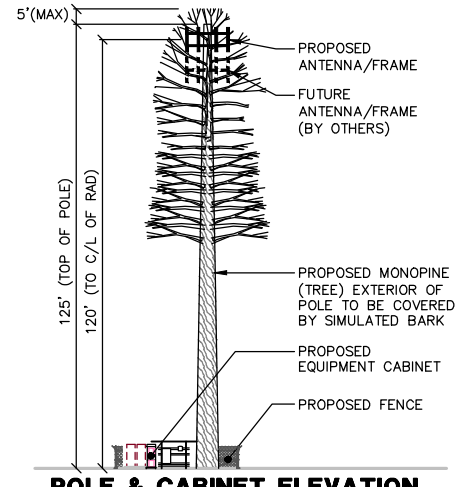


PROPOSED LOCATION #2
 SCALE: 1"=20'



- LEGEND**
- 778 EXIST. CONTOUR
 - 778 PROP. CONTOUR
 - 778.2 EXIST. SPOT ELEVATION
 - 778.20x PROP. SPOT ELEVATION
 - U.P. EXIST. UTILITY POLE
 - OH EXIST. OVERHEAD UTILITY LINE
 - * EXIST. LIGHT POLE
 - EXIST. HYDRANT
 - EXIST. GATE VALVE IN BOX
 - EXIST. CATCH BASIN OR INLET
 - EXIST. SANITARY SEWER
 - TELEPHONE RISER
 - SINGLE TREE
 - TREE OR BRUSH LIMIT
 - PROP. TREE OR BRUSH LIMIT
 - FOUND IRON ROD
 - CONTROL PT.

- TREE LEGEND**
- BO BOX ELDER
 - CH CHERRY
 - CO COTTONWOOD
 - E ELM
 - M MAPLE
 - W WALNUT



POLE & CABINET ELEVATION
 SCALE 1" = 30'

North arrow pointing up with the letter 'M' inside a circle.
 SCALE: 1" = 40'
 0 40 80 120



verizon
 SITE #1274 - "TIENKEN & WASHINGTON"
 CITY OF ROCHESTER HILLS, OAKLAND COUNTY, MICHIGAN
 PRELIMINARY SITE PLAN 2

1

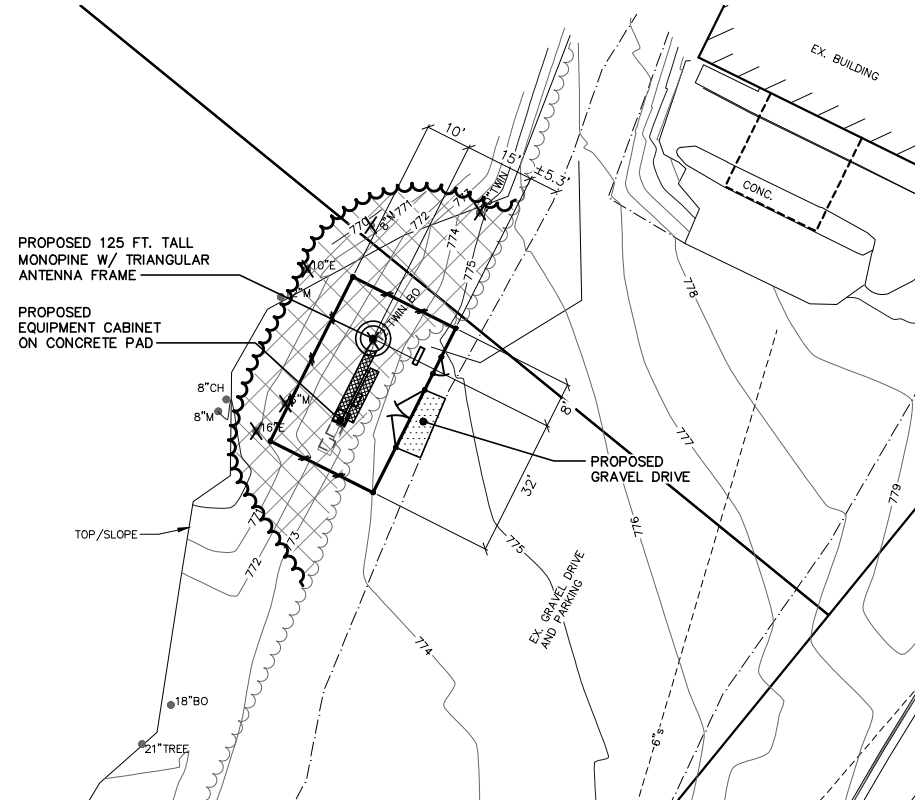
DATE: 8/27/19	SHEET: 1 OF 1
DESIGNER: JBB, WAJ	CADD: JBB, WAJ
ENGINEER: SGF	PLM: SGF
TECHNICAL: KMW, GBT	9404-1274A-01.dwg
PROJECT: 9404-1274A-01	FILE: 8/27/19

JOB No. **94044-1274A**
 REVISION:

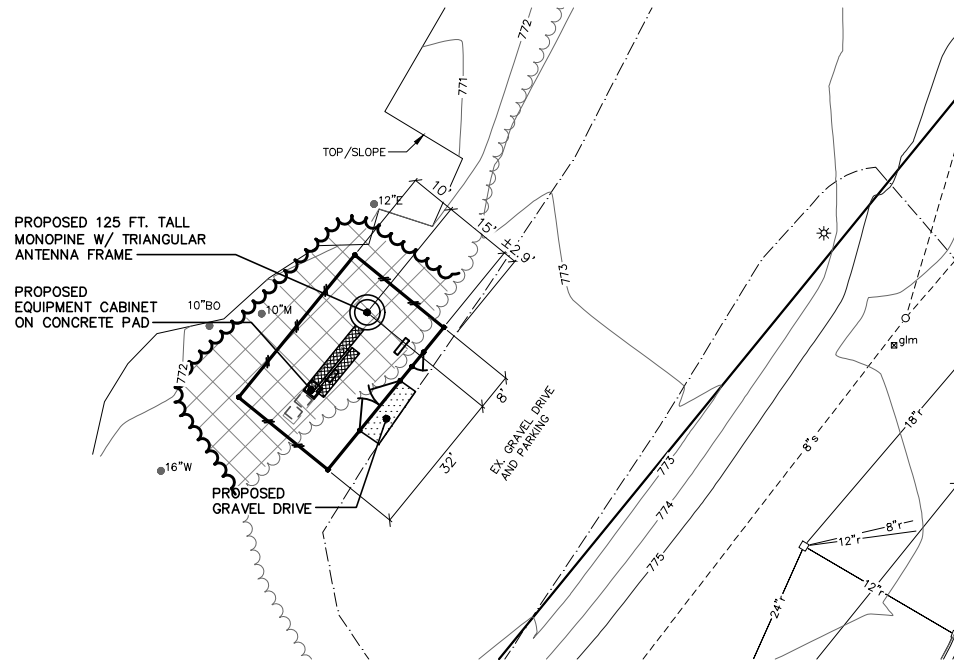
APPLICANT/LESSEE:
 CELCO PARTNERSHIP
 dba VERIZON WIRELESS
 24242 NORTHWESTERN HIGHWAY
 SOUTHFIELD, MICHIGAN 48075
 PHONE: (248) 915-3000

MIDWESTERN CONSULTING
 3835 Plaza Drive Ann Arbor, Michigan 48108
 (734) 995-0200 • www.midwesternconsulting.com
 Land Development • Land Survey • Instrumental • Municipal
 Wireless Communications • Transportation • Landfill Services

R:\0404\1274A\0404-1274A-SPT.dwg, 8/29/2019 10:37 AM, Scott G. Fisher, None
 Copyright © 2019 Midwestern Consulting L.L.C. All rights reserved. No part of this drawing may be used or reproduced in any form or by any means, or stored in a database or retrieval system, without prior permission of Midwestern Consulting L.L.C.



PROPOSED LOCATION #2
 SCALE: 1"=20'



PROPOSED LOCATION #1
 SCALE: 1"=20'



SCALE: 1" = 40'
 0 40 80 120

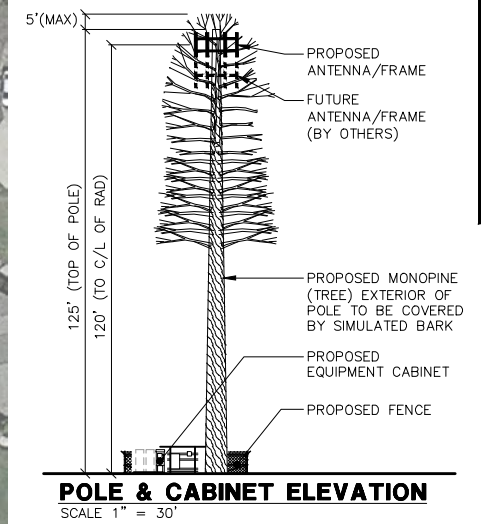


LEGEND

- 778 EXIST. CONTOUR
- 778 PROP. CONTOUR
- x778.2 EXIST. SPOT ELEVATION
- 778.20x PROP. SPOT ELEVATION
- o-U.P. EXIST. UTILITY POLE
- OH- EXIST. OVERHEAD UTILITY LINE
- * EXIST. LIGHT POLE
- ☆ EXIST. HYDRANT
- EXIST. GATE VALVE IN BOX
- EXIST. CATCH BASIN OR INLET
- o-o- EXIST. SANITARY SEWER
- ⋄ TELEPHONE RISER
- SINGLE TREE
- ☁ TREE OR BRUSH LIMIT
- ☁ PROP. TREE OR BRUSH LIMIT
- ☁ TREE OR BRUSH TO BE REMOVED
- △ FOUND IRON ROD
- △ CONTROL PT.

TREE LEGEND

- BO BOX ELDER
- CH CHERRY
- CO COTTONWOOD
- E ELM
- M MAPLE
- W WALNUT
- ✕ TREE TO BE REMOVED



POLE & CABINET ELEVATION
 SCALE 1" = 30'

MIDWESTERN CONSULTING
 3835 Plaza Drive Ann Arbor, Michigan 48108
 (734) 995-0200 • www.midwesternconsulting.com
 Land Development • Land Survey • Institutional • Municipal
 Wireless Communications • Transportation • Landfill Services

APPLICANT/LESSEE:
 CELCO PARTNERSHIP
 dba VERIZON WIRELESS
 24242 NORTHWESTERN HIGHWAY
 SOUTHFIELD, MICHIGAN 48075
 PHONE: (248) 915-3000

verizon
 SITE #1274 - "TIENKEN & WASHINGTON"
 CITY OF ROCHESTER HILLS, OAKLAND COUNTY, MICHIGAN
 PRELIMINARY SITE PLAN

1

JOB No. **94044-1274A**

DATE: 8/02/19

SHEET 1 OF 1

REV. DATE

CADD: JBB

ENG: SGF

PM: SGF

TECH: KMW

94044-1274A-SPT

EPB/SGW