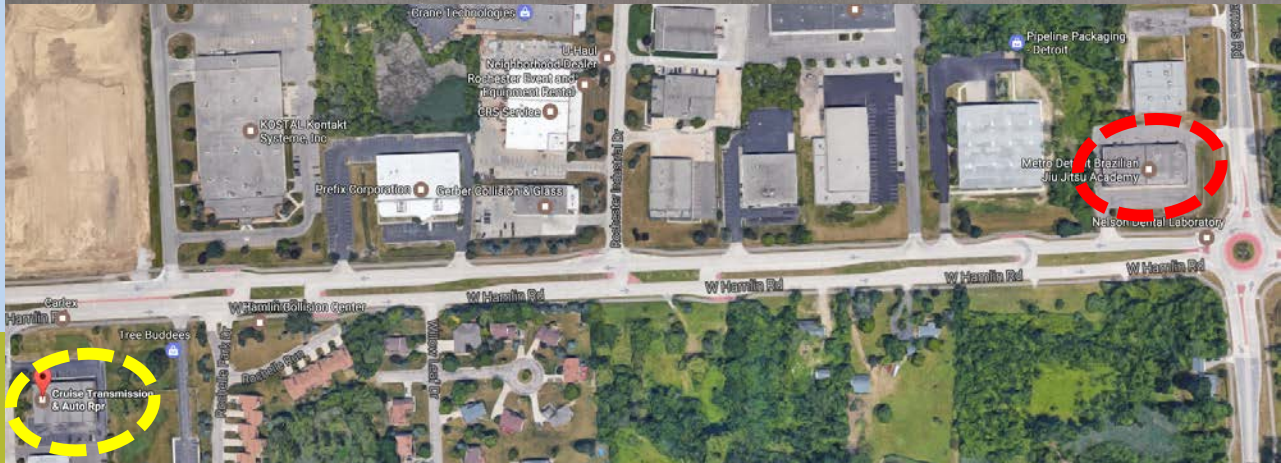




Cruise Transmission

Conditional Use (16-034)

- Automotive service center is a conditional use in REC-W
- PC recommendation to CC
- Existing business relocating, no physical changes to site



Planning Commission Meeting
January 17, 2017



Cruise Transmission

Conditional Use (16-034)



- Staff recommends approval as use meets applicable regulations

