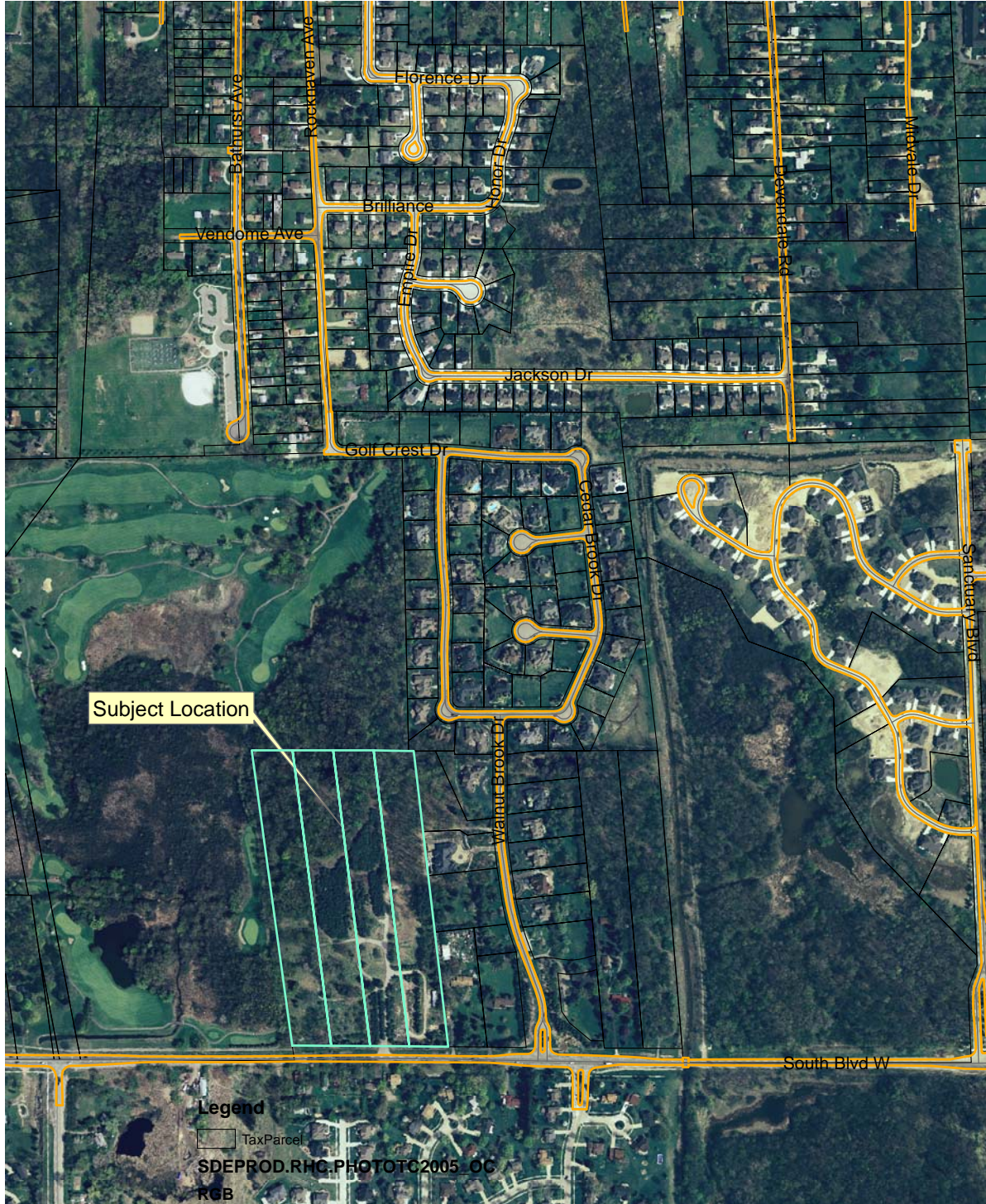


Lorna on the Green City File No. 06-012



Subject Location

Legend

TaxParcel

SDEPROD.RHG.PHOTOC2005_OC

RGB

Red: Band_1

Green: Band_2

Blue: Band_3

— Traveled With Street Name



10/05/06

Aerial photographs as of April 2005
Parcel lines were obtained on 10-03-06 from Oakland County
Although the information provided by this map is believed to
be reliable, its accuracy is not warranted in any way. The City
of Rochester Hills assumes no liability for any claims arising
from the use of this map.

1 inch equals 670 feet