



Your partner for production metrology



Pneumatic. Tactile. Optical.
Our technologies for precision.



Pneumatic – accurate and dirt tolerant.



Tactile – universal and robust.



Optical – fast and flexible.

Division Industrial Metrology

Our product range



WAVELINE

**Roughness- and
Contour metrology**



GAUGELINE
BENCHLINE

**Dimensional
metrology**



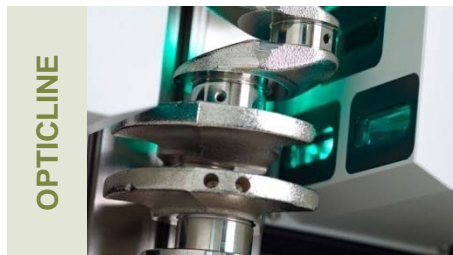
FORMLINE

Form metrology



GAUGELINE
BENCHLINE

Process metrology



OPTICLINE

**Optical shaft
metrology**



SERVICE

Service

Division Industrial Metrology

Precision for many branches



Automotive



Engineering and component supplier

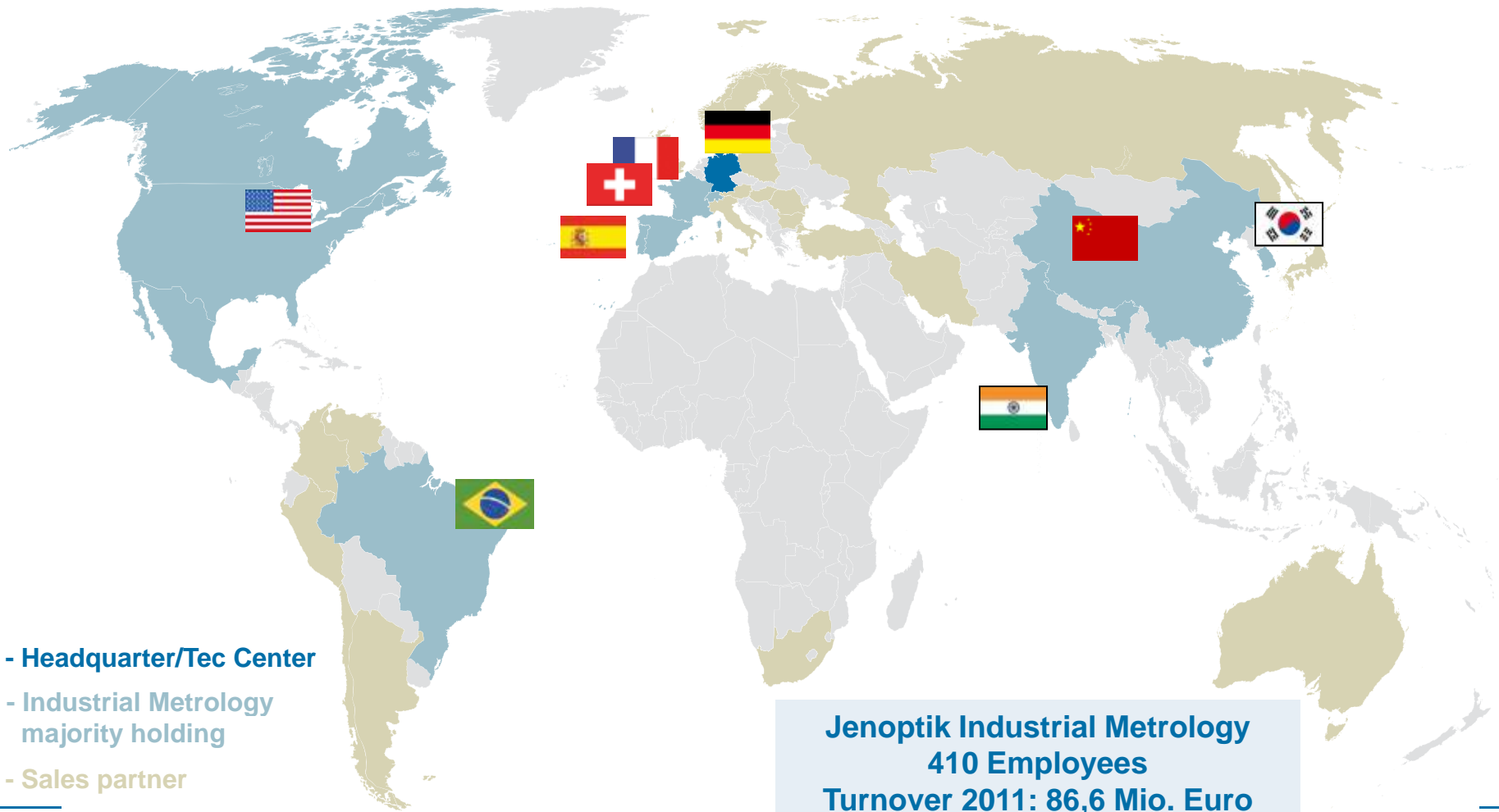


Medical engineering



**Other branches e.g.
Optical- and electrical industry**

Division Industrial Metrology Global organisation



- Headquarter/Tec Center
- Industrial Metrology majority holding
- Sales partner

Jenoptik Industrial Metrology
410 Employees
Turnover 2011: 86,6 Mio. Euro

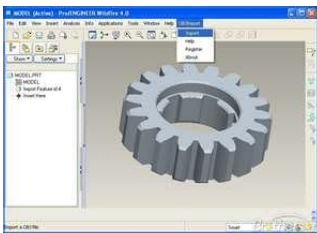
Current Investments in Rochester Hills Facility



- Universal Vertical Mill \$58,000 USD
- Inside Diameter Grinder \$175,000 USD
- Large Cutoff Saw \$9,000 USD
- CRM (Customer Relationship Management) \$75,000 USD
- Three Dimensional AutoCad (Pro-E) \$60,000 USD

Total Expenditure/commitment: \$377,000 USD

Pro-E



Saw



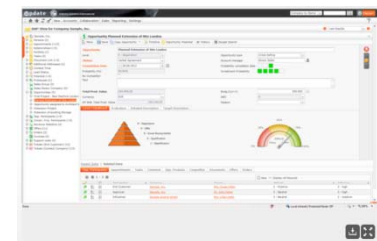
Mill



Grinder



CRM



North American Workforce (Industrial Metrology Division)

- 3rd Quarter 2010 – 80 employees
- 1st Quarter 2012 – current 88 employees
- 4th Quarter 2012 – planned 92 employees

Engineers (controls and mechanical),
precision machinists, sales specialists,
Service Technicians



North American Sales (Industrial Metrology Division)

- 2010 – \$18.3 million
- 2011 - \$24.3 million
- 2012 – estimated \$28.5 million





Thank you very much.

