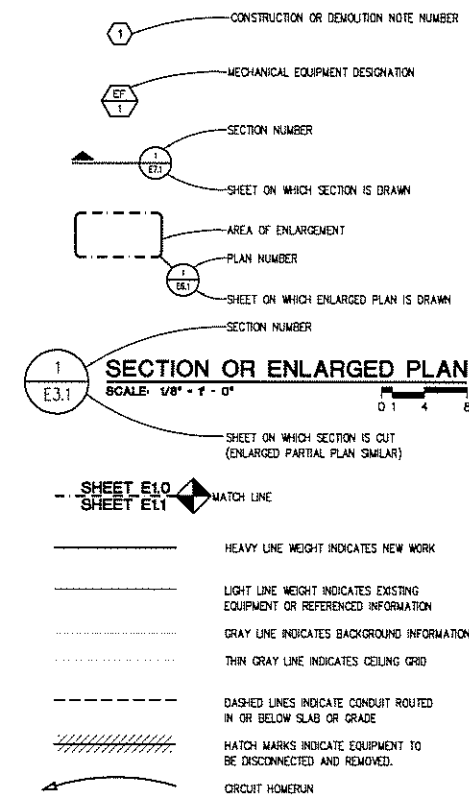


**ELECTRICAL ABBREVIATION LIST**

ABBREVIATION	DESCRIPTION	ABBREVIATION	DESCRIPTION
A	AMPERES	MAX	MAXIMUM
AF	AMPERES FRAME (BREAKER RATING)	MCB	MAIN CIRCUIT BREAKER
A.F.F.	ABOVE FINISH FLOOR	MCC	MOTOR CONTROL CENTER
AIC	AMPS INTERRUPTING CAPACITY	MDP	MAIN DISTRIBUTION PANEL
AL	AUDIENCE LEFT	MECH	MECHANICAL
AR	AUDIENCE RIGHT	MIN	MINIMUM
AT	AMPERES TRIP (BREAKER SETTING)	MISC.	MISCELLANEOUS
ATS	AUTOMATIC TRANSFER SWITCH	MLO	MAIN LUGS ONLY
AUX	AUXILIARY	MTD	MOUNTED
BKR	BREAKER	MTG	MOUNTING
BPS	BOLTED PRESSURE SWITCH	MTR	MOTOR
C	CONDUIT	N	NEUTRAL
CB	CIRCUIT BREAKER	NC	NORMALLY CLOSED
CKT	CIRCUIT	NEC	NATIONAL ELECTRICAL CODE
CT	CURRENT TRANSFORMER	NF	NON-FUSIBLE
DEMO	DEMOLITION	NG	NOT IN CONTRACT
DM	DIMENSION	NL	NIGHT LIGHT
DISC	DISCONNECT	NO	NORMALLY OPEN
DP	DISTRIBUTION PANEL	NTS	NOT TO SCALE
DS	DOWNSTAGE	OC	ON CENTER
DWG	DRAWING	P	POLE
EBU	EMERGENCY BATTERY UNIT	PS	PUSHBUTTON STATION
EC	ELECTRICAL CONTRACTOR	PH	PHASE
ELEC	ELECTRICAL	PT	POTENTIAL TRANSFORMER
EM/EMERG	EMERGENCY	PDP	POWER DISTRIBUTION PANEL
EMT	ELECTRICAL METALLIC TUBING	RECEPT.	RECEPTACLE
EO	ELECTRICALLY OPERATED	RDP	RECEPTACLE DISTRIBUTION PANEL
EW	ELECTRIC WATER COOLER	RP	RECEPTACLE PANEL
EXST	EXISTING	RSC	RIGID STEEL CONDUIT
FA	FIRE ALARM	SCHED	SCHEDULE
FLA	FULL LOAD AMPS	SW	SWITCH
FLR	FLOOR	SWBD	SWITCHBOARD
FOH	FRONT OF HOUSE	SWGR	SWITCHGEAR
FU	FUSE	TB	TERMINAL BOX
G/GND/EG	GROUND	TELECOM	TELECOMMUNICATIONS
GFC	GROUND FAULT CIRCUIT INTERRUPTER	TP	TAMPER PROOF
HQA	HAND-OFF-AUTO	TB	TELEPHONE TERMINAL BACKBOARD
HP	HORSEPOWER	TYP	TYPICAL
HV	HIGH VOLTAGE	U.O.N.	UNLESS OTHERWISE NOTED
HZ	HERTZ	US	UPSTAGE
IG	ISOLATED GROUND	V	VOLTS
JB	JUNCTION BOX	W	WIRE
KV	KILOVOLT	WP	WEATHERPROOF
KVA	KILOVOLT - AMPERES	XFMR	TRANSFORMER
KW	KILOWATT	XP	EXPLOSION PROOF
KWH	KILOWATT - HOURS	(E)	EXISTING
LA	LIGHTNING ARRESTOR	(R)	RELOCATED
LP	LIGHTING PANEL		
LDP	LIGHTING DISTRIBUTION PANEL		

**STANDARD METHODS OF NOTATION**



**ELECTRICAL SYMBOL LIST**

SYMBOL	DESCRIPTION	SYMBOL	DESCRIPTION
[ ]	FIXTURE TYPE	[ T ]	TRANSFORMER
[ ]	LIGHTING FIXTURE	[ ]	DISTRIBUTION PANEL
[ ]	DIRECT/INDIRECT LIGHTING FIXTURE	[ P ]	POLE THRU SERVICE FITTING "X" INDICATES TYPE
[ ]	EMERGENCY FIXTURE	[ FB ]	FLOOR BOX SERVICE FITTING "X" INDICATES TYPE
[ ]	NIGHT LIGHTING FIXTURE	[ AF ]	ACCESS FLOOR SERVICE FITTING "X" INDICATES TYPE
[ ]	LIGHTING FIXTURE	[ RX ]	CORD REEL "X" INDICATES TYPE
[ ]	EMERGENCY FIXTURE	[ RCP ]	REMOTE GENERATOR ANNUNCIATOR PANEL
[ ]	WALL MOUNTED LIGHTING FIXTURE "X" INDICATES MOUNTING HEIGHT	[ ATS ]	AUTOMATIC TRANSFER SWITCH
[ ]	LIGHTING FIXTURE	[ UPS ]	UN-INTERRUPTIBLE POWER SUPPLY
[ ]	EMERGENCY FIXTURE	[ VFC ]	VARIABLE FREQUENCY/ CONTROLLER.
[ ]	LIGHTING FIXTURE	[ ]	MOTOR
[ ]	EMERGENCY FIXTURE	[ ]	MANUAL CONTROLLER
[ ]	EMERGENCY FIXTURE	[ ]	RECESSED OR SURFACE MOUNTED
[ ]	DIRECTIONAL LIGHTING FIXTURE	[ ]	MAGNETIC CONTROLLER
[ ]	WALL SCONCE "X" INDICATES MOUNTING HEIGHT	[ ]	COMBINATION MAGNETIC CONTROLLER
[ ]	LIGHTING TRACK	[ ]	NON-FUSIBLE DISCONNECT SWITCH
[ ]	TRACK LIGHTING FIXTURE	[ ]	FUSIBLE DISCONNECT SWITCH
[ ]	EMERGENCY LIGHTING UNIT	[ ]	ENCLOSED CIRCUIT BREAKER
[ ]	POLE MOUNTED LIGHTING FIXTURE	[ ]	PUSH BUTTON STATION
[ ]	POLE MOUNTED LIGHTING FIXTURE - POST TOP	[ ]	JUNCTION BOX
[ ]	BOLLARD LIGHTING FIXTURE	[ ]	HARD WIRE POWER CONNECTION
[ ]	EXIT LIGHTING FIXTURE WITH DIRECTIONAL ARROWS (SHADED AREA INDICATES FACE)	[ ]	AUTOMATIC DOOR CONTROLLER
[ ]	EXIT LIGHTING FIXTURE WITH DIRECTIONAL ARROWS (SHADED AREA INDICATES FACE)	[ ]	AUTOMATIC DOOR PUSH PAD OPERATOR
[ ]	EXIT LIGHTING FIXTURE WITH DIRECTIONAL ARROWS (SHADED AREA INDICATES FACE)	[ ]	GROUND ROD
[ ]	EXIT LIGHTING FIXTURE - WALL MOUNTED	[ ]	GROUND CONNECTION
[ ]	TWO POLE TOGGLE SWITCH	[ ]	CONDUIT SLEEVE WITH BUSHINGS LENGTH AS REQUIRED "X" INDICATES CONDUIT SIZE
[ ]	3 WAY TOGGLE SWITCH	[ ]	CONDUIT UP
[ ]	4 WAY TOGGLE SWITCH	[ ]	CONDUIT DOWN
[ ]	KEY OPERATED SWITCH	[ ]	EMPTY BOX FOR FUTURE TELECOMMUNICATION OUTLET
[ ]	3 WAY KEY OPERATED SWITCH	[ ]	EMPTY BOX FOR FUTURE TELECOMMUNICATION OUTLET MOUNTED 8" ABOVE COUNTERTOP
[ ]	4 WAY KEY OPERATED SWITCH	[ ]	EMPTY BOX FOR FUTURE CEILING MOUNTED TELECOMMUNICATION OUTLET "X" INDICATES TYPE
[ ]	DIMMER SWITCH	[ ]	TELECOMMUNICATION OUTLET MOUNTED 8" ABOVE COUNTERTOP "X" INDICATES TYPE
[ ]	3 WAY DIMMER SWITCH	[ ]	TELECOMMUNICATION CEILING MOUNTED OUTLET "X" INDICATES TYPE
[ ]	PILOT SWITCH	[ ]	TELECOMMUNICATION BACKBOARD
[ ]	DUAL SWITCHING FOR INNER/OUTER LAMPS OF FLUORESCENT LIGHT FIXTURES	[ ]	INTERCOM OUTLET
[ ]	3-WAY DUAL SWITCHING FOR INNER/OUTER LAMPS OF FLUORESCENT LIGHT FIXTURES	[ ]	SPEAKER
[ ]	4-WAY DUAL SWITCHING FOR INNER/OUTER LAMPS OF FLUORESCENT LIGHT FIXTURES	[ ]	SPEAKER - WALL MOUNTED
[ ]	LOW VOLTAGE SWITCH	[ ]	MICROPHONE
[ ]	OCCUPANCY SENSOR - REFER TO ELECTRICAL STANDARD SCHEDULES	[ ]	VOLUME CONTROL
[ ]	OCCUPANCY SENSOR - REFER TO ELECTRICAL STANDARD SCHEDULES	[ ]	SIGNALING BELL
[ ]	TIME CLOCK	[ ]	SINGLE FACE CLOCK - CEILING MOUNTED
[ ]	CONTACTOR	[ ]	SINGLE FACE CLOCK - WALL MOUNTED
[ ]	PHOTOCELL	[ ]	DOUBLE FACE CLOCK - CEILING MOUNTED
[ ]	TWIST TIMER	[ ]	DOUBLE FACE COMBINATION CLOCK/SPEAKER CEILING MOUNTED
[ ]	OCCUPANCY SENSOR - REFER TO ELECTRICAL STANDARD SCHEDULES - "X" INDICATES TYPE	[ ]	DOUBLE FACE CLOCK - WALL MOUNTED
[ ]	EMERGENCY LOAD TRANSFER DEVICE	[ ]	DOUBLE FACE COMBINATION CLOCK/SPEAKER WALL MOUNTED
[ ]	SINGLE RECEPTACLE	[ ]	MANUAL FIRE ALARM BOX
[ ]	DUPLEX RECEPTACLE	[ ]	SMOKE DETECTOR
[ ]	QUAD RECEPTACLE	[ ]	DUCT SMOKE DETECTOR
[ ]	DUPLEX RECEPTACLE MOUNTED 8" ABOVE COUNTER TOP (UNLESS NOTED OTHERWISE) (SIMILAR FOR ISOLATED GROUND, EMERGENCY AND GFI RECEPTACLES)	[ ]	REMOTE TEST STATION (FOR DUCT DETECTOR)
[ ]	DUPLEX RECEPTACLE-GROUND FAULT CIRCUIT INTERRUPTER	[ ]	THERMAL DETECTOR
[ ]	DUPLEX EMERGENCY RECEPTACLE	[ ]	PROJECTED BEAM DETECTOR
[ ]	DUPLEX ISOLATED GROUND RECEPTACLE WITH DEDICATED NEUTRAL CONDUCTOR	[ ]	FIRE ALARM BELL
[ ]	QUAD ISOLATED GROUND RECEPTACLE WITH DEDICATED NEUTRAL CONDUCTOR	[ ]	FIRE ALARM AUDIBLE NOTIFICATION APPLIANCE
[ ]	CEILING MOUNTED DUPLEX RECEPTACLE	[ ]	FIRE ALARM VISUAL NOTIFICATION APPLIANCE "XX" INDICATES CANDELA RATING
[ ]	SPECIAL RECEPTACLE - REFER TO ELECTRICAL STANDARD SCHEDULES	[ ]	FIRE ALARM COMBINATION VISUAL/ AUDIBLE "XX" INDICATES CANDELA RATING
[ ]	MULTI-OUTLET RACEWAY	[ ]	FIRE ALARM COMBINATION VISUAL/ AUDIBLE NOTIFICATION APPLIANCE - CEILING MOUNTED "XX" INDICATES CANDELA RATING
[ ]	BRANCH CIRCUIT PANELBOARD	[ ]	FIRE ALARM VISUAL NOTIFICATION APPLIANCE MOUNTED "XX" INDICATES CANDELA RATING
[ ]	MOTOR CONTROL CENTER	[ ]	FIREFIGHTERS PHONE JACK

**ELECTRICAL DRAWING INDEX**

SHEET NO.	SHEET TITLE	KEY PLAN
EO.1	ELECTRICAL STANDARDS AND DRAWING INDEX	
EO.2	ELECTRICAL SITE PLAN - DEMOLITION	
EO.3	ELECTRICAL SITE PLAN - NEW WORK	
EO.4	SITE LIGHTING PHOTOMETRIC CALCULATION PLAN	
EO.5	DETAILS AND SCHEDULES	
EO.6	DETAILS	

ISSUE DATE	ISSUED FOR
10-22-08	SITE PLAN RE-SUBMITTAL

DRAWN	SC
CHECKED	SC
APPROVED	GJZ

**Peter Basso Associates Inc.**  
CONSULTING ENGINEERS  
5145 Livorno, Suite 100  
Troy, Michigan 48068-3276  
Tel: 248-879-5666  
Fax: 248-879-0007  
www.pbaonline.com  
PBA Project No. 2008-0263-00

**FRENCH associates**  
architect planners interior

1600 Parkside  
Rochester, MI 48307  
T: 248.656.1377  
F: 248.656.7746  
www.frenchco.com  
© FRENCH ASSOCIATES, INC.

PROJECT  
Rochester College  
Health & Life  
Science Center

Rochester Hills  
Michigan

**STANDARD MOUNTING HEIGHTS**

CONVENIENCE AND SPECIAL PURPOSE RECEPTACLE OUTLETS AND TELECOMMUNICATION OUTLETS.	16" A.F.F. TO BOTTOM OF BOX, U.O.N.
LIGHT SWITCHES, MOTOR CONTROL DEVICES AND MANUAL FIRE ALARM BOXES.	48" A.F.F. TO TOP OF BOX, U.O.N.
FIRE ALARM HORNS, SPEAKERS, STROBES AND COMBINATION DEVICES.	96" A.F.F. OR 6" BELOW CEILING, WHICHEVER IS LESS, U.O.N.
GFI RECEPTACLES IN TOILET ROOMS AND JANITOR CLOSETS.	48" A.F.F. TO TOP OF BOX, U.O.N.
BRANCH CIRCUIT PANELBOARDS AND LIGHTING CONTROLLERS.	6'-6" A.F.F. TO TOP OF ENCLOSURE, U.O.N.
CLOCKS AND SPEAKERS	COORDINATE MOUNTING HEIGHTS WITH ARCHITECT

NOTE: SOME SYMBOLS AND ABBREVIATIONS SHOWN MAY NOT APPLY TO THIS PROJECT.

SHEET

ELECTRICAL STANDARDS AND DRAWING INDEX

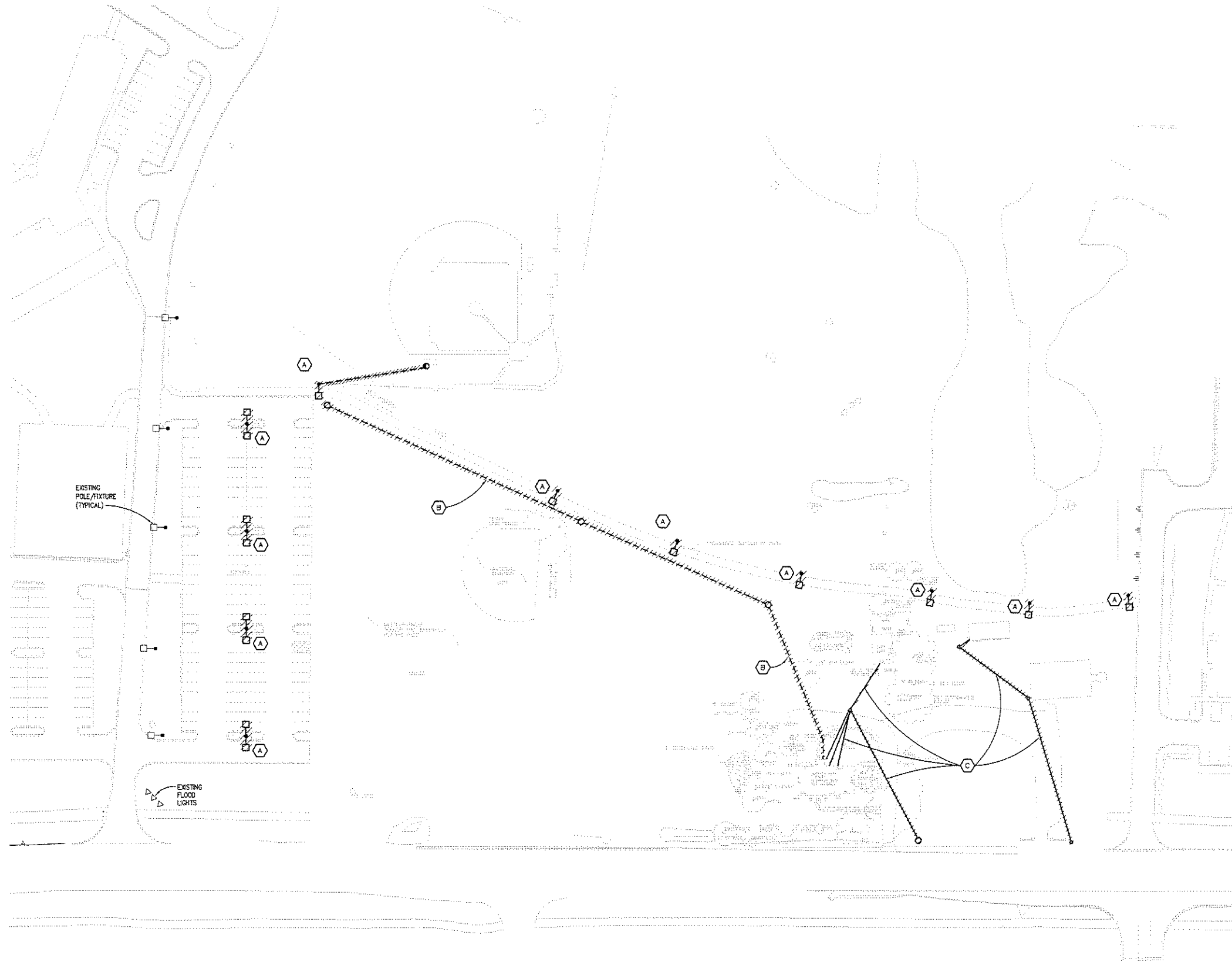
PROJECT NUMBER  
2008-0076

SHEET NUMBER  
**EO.1**

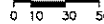
**NOT FOR CONSTRUCTION**

G:\2008\2008-0343-00\Doc\2008-0343-00-Edo-IND.dwg, E01 10/22/2008 9:28:46 AM Gregory J. Ziegler DWG6 ePlot.pc3 1.76067 Peter Basso Associates Inc.

G:\2008\2008-0343-00\Cad\2008-0343-00-E0b-DSP.dwg, E02 10/22/2008 9:29:03 AM Gregory J. Ziegler DWG6 ePlot.pc3 1.75067 Peter Basso Associates Inc.



**ELECTRICAL SITE PLAN - DEMOLITION**  
SCALE: 1" = 50'



KEY PLAN

**GENERAL NOTES:**

1. THESE NOTES ARE GENERIC GUIDELINES ONLY. ELECTRICAL CONTRACTOR'S PERSONNEL ON SITE SHALL BE THOROUGHLY FAMILIAR WITH THE PUBLISHED SPECIFICATIONS FOR EXACT DESCRIPTIONS OF SCOPE, METHODS, AND MATERIAL.
2. THESE DRAWINGS REPRESENT THE GENERAL EXTENT AND ARRANGEMENT OF SYSTEMS, BUT ARE NOT TO BE CONSIDERED FABRICATION DRAWINGS. COORDINATE WITH OTHER TRADES, AND PROVIDE EACH SYSTEM COMPLETE, INCLUDING ALL NECESSARY COMPONENTS, FITTINGS, AND OFFSETS.
3. CONDUCT A SURVEY TO IDENTIFY ALL UNDERGROUND UTILITIES. CALL 811 PRIOR TO EXCAVATION.
4. UTILITIES SHOWN ON THESE DRAWINGS ARE FOR REFERENCE ONLY. COORDINATE EXACT LOCATION OF ALL EXISTING UTILITIES, AND ROUTING OF ALL NEW UNDERGROUND UTILITIES PRIOR TO EXCAVATION. MINIMIZE EXCAVATION BY SHARING TRENCHES WHEN EVER POSSIBLE.
5. Dewater TRENCHES PRIOR TO INSTALLATION OF CONDUITS. PROVIDE WATER TIGHT FITTINGS ON ALL UNDERGROUND CONDUITS.
6. COORDINATE DEMOLITION WORK, AND ELECTRICAL AND TELEPHONE SERVICES TO THE SITE, WITH THE RESPECTIVE LOCAL UTILITY COMPANY REPRESENTATIVES PRIOR TO COMMENCEMENT OF WORK. INCLUDE ALL ASSOCIATED COST/FEE'S BY THE UTILITY COMPANIES IN THE BID PRICE.
7. INSTALL UNDERGROUND CONDUITS 42" BELOW FINISHED GRADE, MINIMUM, UNLESS NOTED OTHERWISE.
8. COORDINATE SERVICE SHUT-DOWNS WITH ALL TRADES INVOLVED ON SITE AND OBTAIN WRITTEN AUTHORIZATION FROM OWNER 72 HOURS PRIOR TO ANY ELECTRICAL AND/OR TELEPHONE SHUT-DOWN.
9. REMOVE ALL DE-ENERGIZED CONDUCTORS FROM SITE AT COMPLETION OF THE PROJECT.
10. OUTDOOR LIGHTING BRANCH CIRCUIT WIRING SHALL BE MINIMUM #8 AWG CONDUCTORS (20'HW), IN MINIMUM 1" DIA. CONDUIT, UNLESS NOTED OTHERWISE.
11. SPARE CONDUITS SHALL INCLUDE PULL STRING AND SHALL BE TERMINATED WITH A CAP.
12. EXCAVATE THE ENTIRE LENGTH OF TRENCH TO PROPERLY SET DUCT ELEVATIONS.

**DEMOLITION NOTES:**

- (A) REMOVE EXISTING SITE LIGHTING FIXTURES/BASES COMPLETE. REMOVE CIRCUITING BACK TO SOURCE.
- (B) UNDERGROUND FIBER CABLE. COORDINATE REMOVAL WITH THE OWNER.
- (C) OVERHEAD UTILITY CABLES SHALL BE REMOVED. COORDINATE DEMOLITION WITH THE UTILITY COMPANIES.

ISSUE DATE	ISSUED FOR
10-22-08	SITE PLAN RE-SUBMITTAL
DRAWN	SC
CHECKED	SC
APPROVED	GJZ

**PBA**  
**Peter Basso Associates Inc**  
CONSULTING ENGINEERS  
545 Livonia, Suite 100  
Troy, Michigan 48068-3276  
Tel: 248-879-5656  
Fax: 248-879-0007  
www.pba1.com  
PBA Project No. 2008-0343-02



**FRENCH associates**

1600 Parkdale  
Rochester, MI 48307  
T 248.656.1377  
F 248.656.7746  
french@frenchassociates.com  
© FRENCH ASSOCIATES, INC.

PROJECT  
Rochester College  
Health & Life  
Science Center

Rochester Hills  
Michigan

SHEET  
ELECTRICAL SITE  
PLAN - DEMOLITION

PROJECT NUMBER  
2008-0343-076

SHEET NUMBER  
**E0.2**

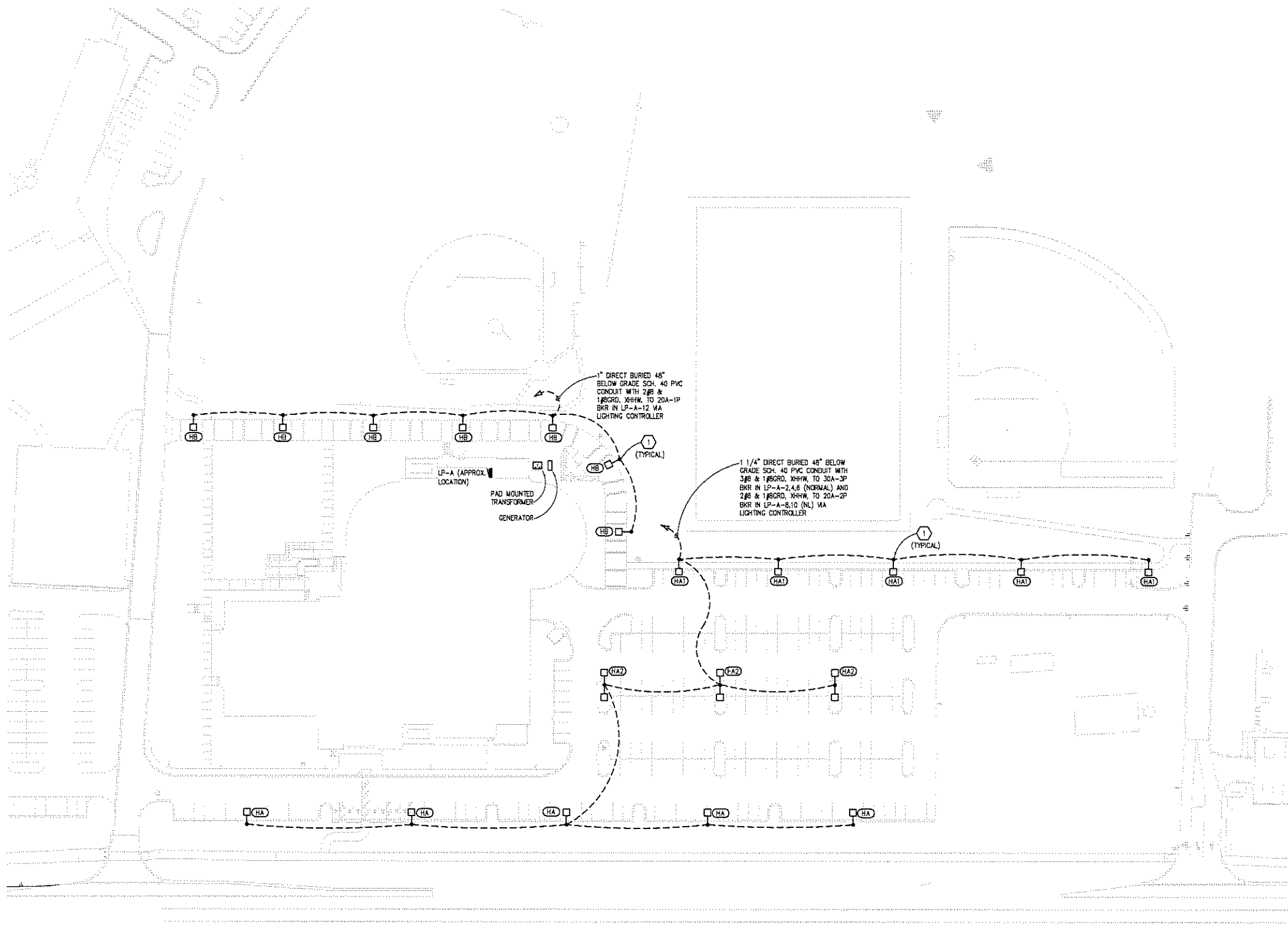


Know what's below.  
Call before you dig.

City File No. 94-426.8, Section 15

NOT FOR CONSTRUCTION

G:\2008\2008-0343-00\Cad\2008-0343-00-Edc-SP.dwg, E03 10/22/2008 9:29:41 AM Gregory J. Ziegler DMF6 ePlot.pc3 1.76067 Peter Basso Associates Inc.



**ELECTRICAL SITE PLAN - NEW WORK**  
SCALE: 1" = 80'

**GENERAL NOTES:**

- THESE NOTES ARE GENERIC GUIDELINES ONLY. ELECTRICAL CONTRACTOR'S PERSONNEL ON SITE SHALL BE THOROUGHLY FAMILIAR WITH THE PUBLISHED SPECIFICATIONS FOR EXACT DESCRIPTIONS OF SCOPE, METHODS, AND MATERIAL NOMENCLATURE.
1. ELECTRICAL CONTRACTOR SHALL VERIFY WITH GENERAL CONTRACTOR/CONSTRUCTION MANAGER THAT A SURVEY HAS BEEN CONDUCTED AND ALL UNDERGROUND UTILITIES IDENTIFIED. CONTACT MISS DIG AT 1-800-482-7171.
  2. UTILITIES SHOWN ON THESE DRAWINGS ARE FOR REFERENCE ONLY. ELECTRICAL CONTRACTOR SHALL COORDINATE EXACT LOCATION OF ALL EXISTING UTILITIES, AND ROUTING OF ALL NEW UNDERGROUND UTILITIES, WITH RESPECTIVE TRADES (GENERAL PLUMBING, CIVIL, ETC.), PRIOR TO DIGGING. MINIMIZE DIGGING BY SHARING TRENCHES WHEN EVER POSSIBLE.
  3. ELECTRICAL CONTRACTOR SHALL DEWATER TRENCHES PRIOR TO INSTALLATION OF CONDUITS. PROVIDE WATER TIGHT FITTINGS ON ALL UNDERGROUND CONDUITS.
  4. ELECTRICAL CONTRACTOR SHALL COORDINATE ANY DEMOLITION, TEMPORARY, AND PERMANENT (ELECTRICAL AND TELEPHONE) SERVICES TO THE SITE, WITH THE RESPECTIVE LOCAL UTILITY COMPANY REPRESENTATIVES, IN FIELD, PRIOR TO COMMENCEMENT OF WORK. ALL ASSOCIATED COSTS/FEE'S BY THE UTILITY COMPANIES SHALL BE INCLUDED IN THE BID PRICE.
  5. UNDERGROUND CONDUITS SHALL BE INSTALLED MINIMUM 42" BELOW FINISHED GRADE, UNLESS NOTED OTHERWISE. REFER TO ELECTRICAL DETAILS.
  6. ELECTRICAL CONTRACTOR SHALL COORDINATE SERVICE SHUT-DOWNS WITH ALL TRADES INVOLVED ON SITE, AND OBTAIN WRITTEN AUTHORIZATION FROM OWNER 72 HOURS PRIOR TO ANY ELECTRICAL AND/OR TELEPHONE SHUT-DOWN.
  7. AT COMPLETION OF THE PROJECT, ELECTRICAL CONTRACTOR SHALL REMOVE ALL DE-ENERGIZED CONDUCTORS FROM SITE.
  8. OUTDOOR LIGHTING BRANCH CIRCUIT WIRING SHALL BE MINIMUM #8 AWG CONDUCTORS (XHHW), IN MINIMUM 1" DIA. CONDUIT, UNLESS NOTED OTHERWISE.
  9. OUTDOOR SPARE CONDUITS SHALL INCLUDE PULL STRING AND SHALL BE TERMINATED WITH A CAP ON EACH END. PROVIDE SITE MARKER AT LOCATION.
  10. ELECTRICAL CONTRACTOR SHALL DIG OUT ENTIRE LENGTH OF TRENCH TO PROPERLY SET DUCT ELEVATIONS.
  11. DIRECT BURY CONDUITS IN AREAS WHERE NEW PAVING IS TO OCCUR.
  12. DIRECTIONAL BORE CONDUITS IN AREAS WHERE EXISTING PAVING IS TO REMAIN.
  13. TYPES "HA"/"HA1"/"HA2" POLE MOUNTED LIGHT FIXTURES ARE 480V, 14' 480V, 3# FEEDS TO FIXTURES SHALL BE EVENLY DISTRIBUTED BETWEEN THE PHASES (ab, bc, ca, ab, bc, ca .....AND SO ON). BALANCE LOADS EVENLY.

**CONSTRUCTION NOTES:**

1. POLE BASE LOCATIONS SHALL BE 3'-0" FROM CENTER OF THE POLE TO BACK SIDE OF WALK. COORDINATE EXACT LIGHTING POLE LOCATIONS WITH CIVIL AND ARCHITECTURAL TRADES.
2. NIGHT LIGHT (NL) FIXTURE, CIRCUIT TO LP-A-8,12 VIA PHOTO CELL CONTROLLED CONTACTOR.

KEY PLAN

ISSUE DATE	ISSUED FOR
10-22-08	SITE PLAN RE-SUBMITTAL
DRAWN	SC
CHECKED	SC
APPROVED	GJZ

**Peter Basso Associates Inc.**  
CONSULTING ENGINEERS  
5145 Livonia, Suite 100  
Troy, Michigan 48068-3276  
Tel: 248-879-5666  
Fax: 248-879-0007  
www.pba.com  
PEA Project No. 0318-0343-00

**FRENCH associates**  
1600 Parkside  
Rochester, MI 48307  
T: 248.656.1377  
F: 248.656.7746  
e: info@frenchmi.com  
© FRENCH ASSOCIATES, INC.

PROJECT  
Rochester College  
Health & Life  
Science Center

Rochester Hills  
Michigan

SHEET  
ELECTRICAL SITE  
PLAN - NEW WORK

PROJECT NUMBER  
20080076

SHEET NUMBER  
**E0.3**



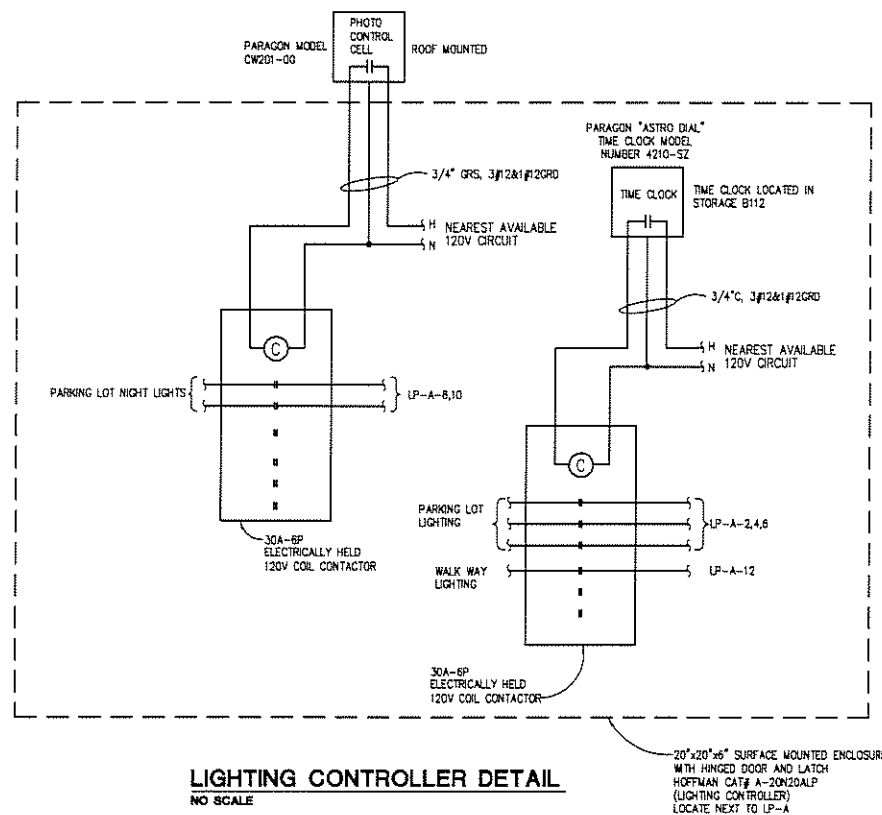
Know what's below.  
Call before you dig.

City File No. 94-426.8, Section 15

**NOT FOR CONSTRUCTION**

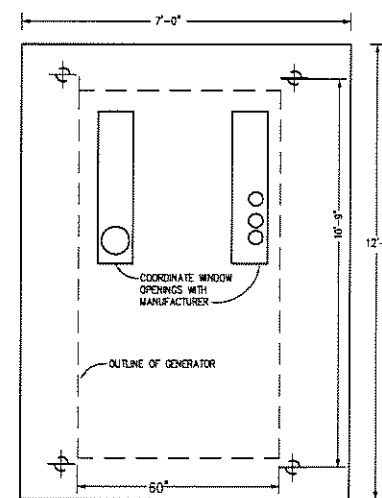
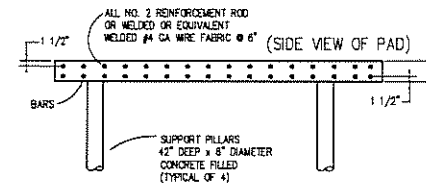


LIGHTING FIXTURE SCHEDULE			
TYPE	DESCRIPTION	MANUFACTURERS	
HA	250 WATT HIGH PRESSURE SODIUM POLE MOUNTED PARKING LOT LIGHT FIXTURE. DIE CAST ALUMINUM HOUSING WIDE FORWARD THROW HORIZONTAL LAMP. WITH FORWARD THROW, TYPE IV DISTRIBUTION. CUT-OFF SHIELDED, SEGMENTED REFLECTOR. FULLY GASKETED, TEMPERED GLASS LENS. BALLAST SHALL BE 480 VOLT FUSED AT POLE HANDHOLE. CWA, HIGH POWER FACTOR CLASS H INSULATED WITH -20 DEG MINIMUM STARTING TEMPERATURE. 17'-6" (4" SQUARE) POLE WITH 2'-6" CONCRETE BASE. POLE SHALL HAVE POWDER COAT FINISH WITH SQUARE BOLT COVER. CONFIGURE AS INDICATED ON PLAN, WITH HOUSE SIDE SHIELD.	1. LITHONIA KSF 2. MCCRAW-EDISON 3. EMCO 4. BETA	250W HIGH PRESSURE SODIUM
HA1	SAME AS TYPE "HA" EXCEPT WITHOUT HOUSE SIDE SHIELD, WITH 6" LAND SCAPE CONCRETE BASE AND 19'-6" (4" SQUARE) POLE.		
HA2	SAME AS TYPE "HA" EXCEPT WITH TWO HEADS AND WITHOUT HOUSE SIDE SHIELD.		
HB	100 WATT HIGH PRESSURE SODIUM POLE MOUNTED WALK WAY LIGHT FIXTURE. DIE CAST ALUMINUM HOUSING WIDE FORWARD THROW HORIZONTAL LAMP. WITH FORWARD THROW, TYPE IV DISTRIBUTION. CUT-OFF SHIELDED, SEGMENTED REFLECTOR. FULLY GASKETED TEMPERED GLASS LENS. BALLAST SHALL BE 277 VOLT FUSED AT POLE HANDHOLE. HIGH REACTANCE, HIGH POWER FACTOR CLASS H INSULATED WITH -20 DEG MINIMUM STARTING TEMPERATURE. 11'-6" (4" SQUARE) POLE WITH 6" LAND SCAPE CONCRETE BASE. POLE SHALL HAVE POWDER COAT FINISH WITH SQUARE BOLT COVER. CONFIGURE AS INDICATED ON PLAN.	1. LITHONIA KSF SERIES 2. MCCRAW-EDISON 3. EMCO 4. BETA	100W HIGH PRESSURE SODIUM
NOTE: FIXTURE/POLE POWDER COAT PAINT COLOR AS SPECIFIED BY ARCHITECT.			



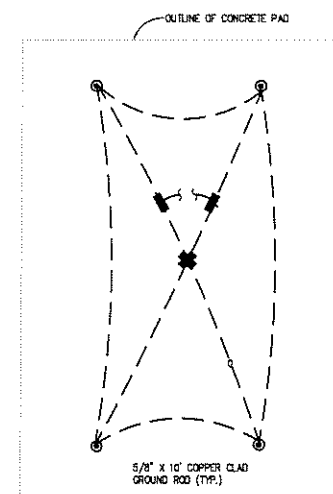
**LIGHTING CONTROLLER DETAIL**  
NO SCALE

- NOTES
1. SET TIME CLOCKS PER OWNER'S DIRECTION.
  2. MODEL NUMBERS LISTED ARE BY PARAGON, OR PROVIDE INTERMATIC EQUAL.

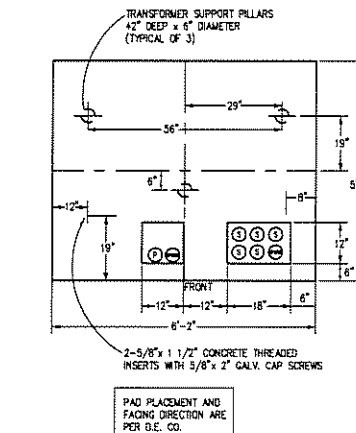
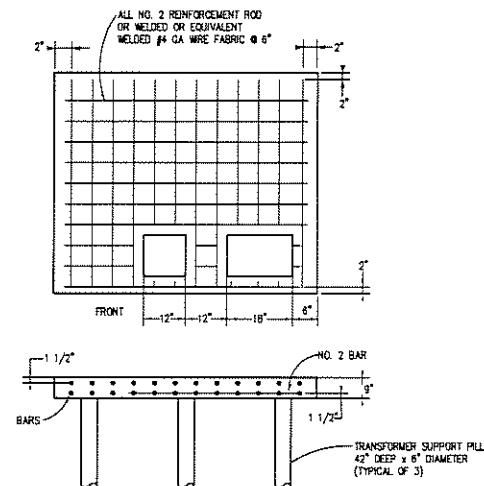


**GENERAL NOTES:**

1. COORDINATE COMPLETE INSTALLATION AND REQUIREMENTS WITH MANUFACTURERS. ADJUST DIMENSIONS SHOWN AS REQUIRED BY TRANSFORMER MANUFACTURER. (VERIFY SIZES BEFORE POURING PADS)
2. PRIMARY CONDUIT MUST BE POSITIONED AT THE FRONT OF THE PRIMARY WINDOW AS SHOWN
3. NUMBER OF CONDUITS AS SHOWN ON SHEET E5.01.
4. IF CONDUITS ARE NOT PULLED IN ALL SECONDARY SERVICE CONDUITS, THE UNUSED CONDUIT SHOULD BE AT THE FRONT POSITION.
5. PROVIDE 36" RADIUS BEND MINIMUM FOR EACH 4" RIGID CONDUIT SWEEP.
6. CONCENTRATION 6 BAGS OF CEMENT PER YARD.
7. MAINTAIN CONCRETE COVER CLEARANCE BETWEEN REINFORCEMENT RODS AND SURFACES AS SHOWN.
8. ALL EQUIPMENT SHALL BE FURNISHED AND INSTALLED BY THE ELECTRICAL CONTRACTOR.
9. SECURE GENERATOR TO CONCRETE PAD PER MANUFACTURER'S RECOMMENDATIONS. REVISE DETAIL AS REQUIRED.



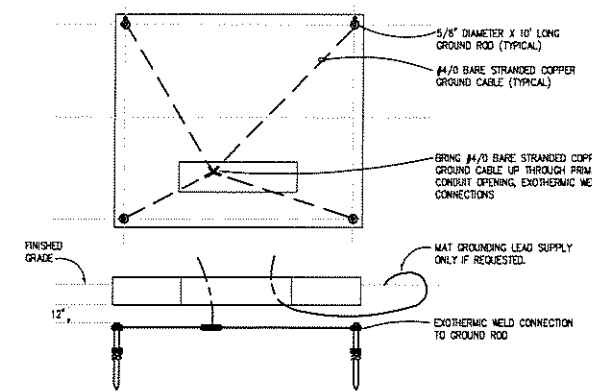
**GENERATOR PAD GROUNDING DETAIL**  
NO SCALE



**CONCRETE TRANSFORMER PAD DETAIL**  
NO SCALE

**GENERAL NOTES:**

1. COORDINATE COMPLETE INSTALLATION AND REQUIREMENTS WITH DETROIT EDISON COMPANY (VERIFY SIZES AND OPENINGS BEFORE POURING PAD)
2. PRIMARY CONDUIT MUST BE POSITIONED AT THE FRONT OF THE PRIMARY WINDOW AS SHOWN
3. NUMBER OF CONDUITS IS TO BE APPROVED BY THE SERVICE PLANNER. CONDUITS SHALL BE INSTALLED 1 1/2" ABOVE THE TOP OF THE PAD.
4. IF CONDUITS ARE NOT PULLED IN ALL SECONDARY SERVICE CONDUITS, THE UNUSED CONDUIT SHOULD BE AT THE FRONT POSITION.
5. SWEEPS SHALL BE 4" RIGID CONDUIT WITH A MINIMUM 36" RADIUS BEND.
6. CONCENTRATION 6 BAGS OF CEMENT PER YARD.
7. MAINTAIN CONCRETE COVER CLEARANCE BETWEEN REINFORCEMENT RODS AND SURFACES AS SHOWN.
8. TRANSFORMER SHALL BE FURNISHED AND SET IN PLACE BY DETROIT EDISON.
9. FINAL TERMINATIONS AT TRANSFORMER BY DETROIT EDISON.



**TRANSFORMER PAD GROUNDING DETAIL**  
NO SCALE

KEY PLAN	
ISSUE DATE	ISSUED FOR
10-22-08	SITE PLAN RE-SUBMITTAL
DRAWN	SC
CHECKED	SC
APPROVED	CJZ

**Peter Basso Associates Inc.**  
CONSULTING ENGINEERS  
545 Linnas, Suite 100  
Troy, Michigan 48068-3276  
Tel: 248-879-5666  
Fax: 248-879-0007  
www.pba.com  
PBA Project No. 2008-0343-00

**FRENCH associates**  
1600 Parkdale  
Rochester, MI 48307  
T 248.656.1377  
F 248.656.7746  
enr@french-associates.com  
© FRENCH ASSOCIATES, INC.

PROJECT  
**Rochester College  
Health & Life  
Science Center**

Rochester Hills  
Michigan

SHEET  
**DETAILS AND  
SCHEDULES**

PROJECT NUMBER  
**20080076**

SHEET NUMBER  
**E0.5**

**NOT FOR CONSTRUCTION**

ISSUE DATE	ISSUED FOR
10-22-08	SITE PLAN RE-SUBMITTAL
DRAWN	SC
CHECKED	SC
APPROVED	GJZ

**PBA**  
**Peter Basso Associates Inc**  
 CONSULTING ENGINEERS  
 5145 Livonia, Suite 100  
 Troy, Michigan 48068-3278  
 Tel: 248-679-5666  
 Fax: 248-679-0007  
 WWW.PBAENGINEERS.COM  
 PBA Project No. 0308040100



1600 Parkdale  
 Rochester, MI 48307  
 T: 248.656.1377  
 F: 248.656.7746  
 email@frenchco.com  
 © FRENCH ASSOCIATES, INC.

PROJECT  
 Rochester College  
 Health & Life  
 Science Center

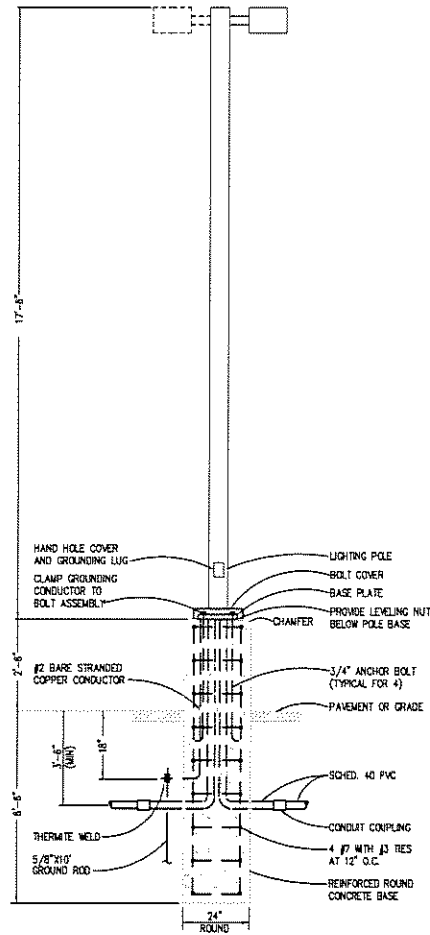
Rochester Hills  
 Michigan

SHEET  
 DETAILS

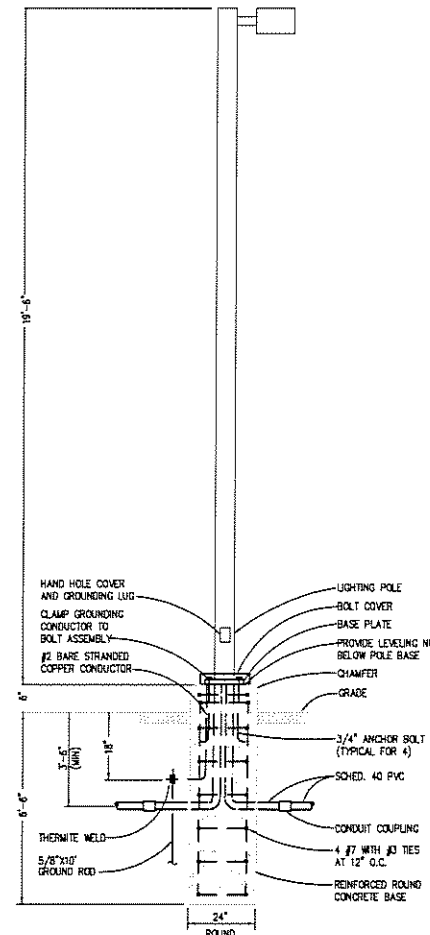
PROJECT NUMBER  
 2008076

SHEET NUMBER

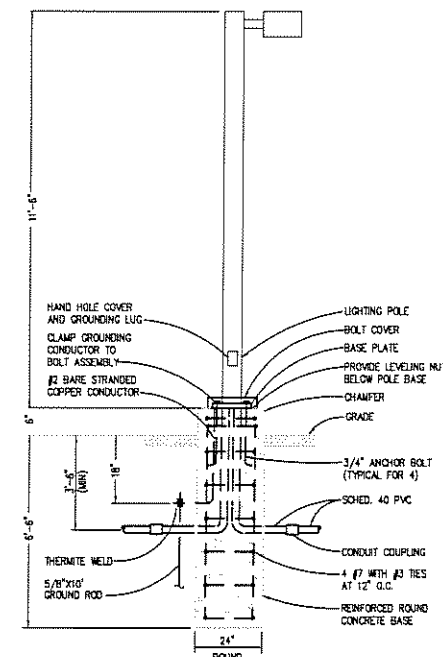
E0.6



**FIXTURE TYPE 'HA' AND 'HA2' POLE BASE DETAIL**  
 NO SCALE



**FIXTURE TYPE 'HA1' POLE BASE DETAIL**  
 NO SCALE



**FIXTURE TYPE 'HB' POLE BASE DETAIL**  
 NO SCALE

**NOT FOR CONSTRUCTION**