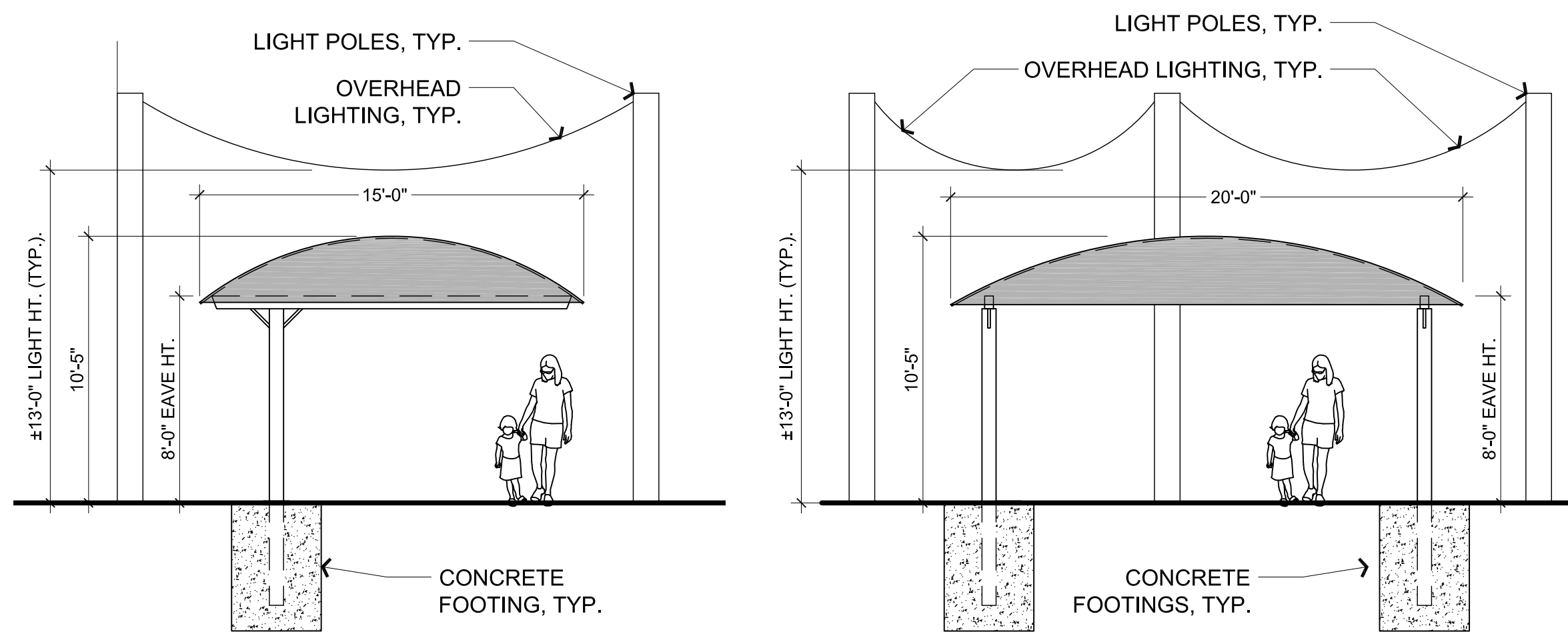


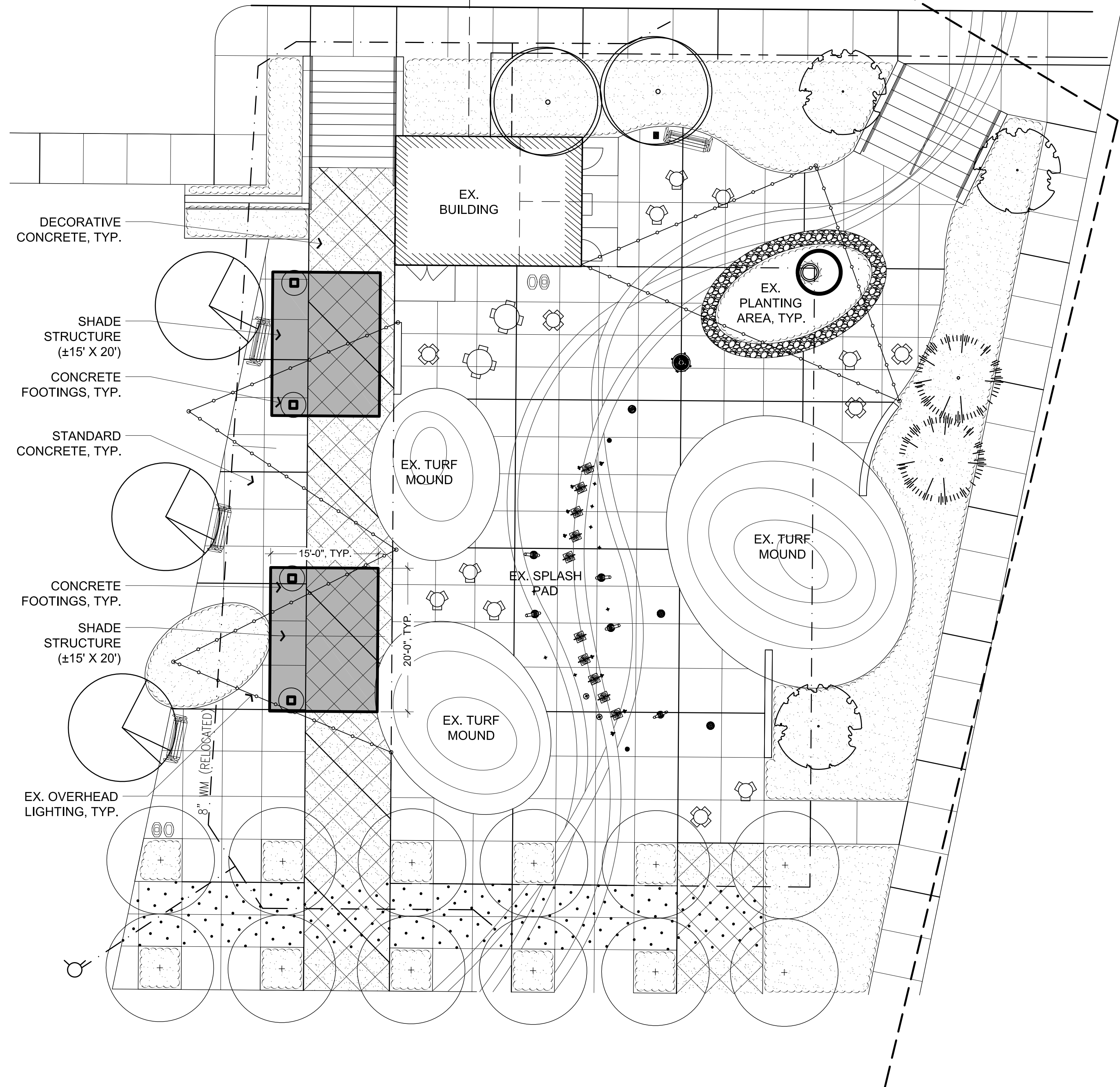
GENERAL NOTES:

1. CANTILEVER SHADE STRUCTURE SHALL BE MANUFACTURED BY SHADE SYSTEMS, OR AN APPROVED EQUAL.
2. CONTRACTOR SHALL BE RESPONSIBLE FOR BEING FAMILIAR WITH ALL DOCUMENTED UNDERGROUND UTILITIES, PIPES AND STRUCTURES. LOCATE AND PROTECT ALL EXISTING UTILITIES DURING CONSTRUCTION UNLESS OTHERWISE NOTED. CONTACT MISS DIG (811 OR 800-482-7171) A MINIMUM OF 3 DAYS PRIOR TO CONSTRUCTION.
3. CONTRACTOR SHALL BE RESPONSIBLE FOR ANY COORDINATION WITH SUBCONTRACTORS AS REQUIRED TO ACCOMPLISH SHADE STRUCTURE INSTALLATION OPERATIONS.
4. REFER TO DETAILS AND SPECIFICATIONS FOR ADDITIONAL INFORMATION.
5. ALL DIMENSIONS ON THIS DRAWING ARE IN FEET AND INCHES UNLESS OTHERWISE NOTED. DO NOT SCALE DRAWINGS. UTILIZE DIMENSIONS INDICATED ON THE PLANS.
6. THE CONTRACTOR SHALL COORDINATE ALL WORK AND BE RESPONSIBLE FOR ALL METHODS, MEANS, SEQUENCE, AND PROCEDURES OF THE WORK.
7. THE CONTRACTOR SHALL KEEP ALL DRAINAGE FACILITIES (CATCH BASINS, YARD DRAINS, ETC.) AFFECTED BY HIS CONSTRUCTION OPERATIONS CLEAN AND FULLY OPERATIONAL AT ALL TIMES.
8. CONTRACTOR SHALL REPAIR AT HIS OWN EXPENSE, ANY DAMAGE, WHETHER INSIDE OR OUTSIDE OF THE PROJECT LIMITS, TO UTILITY SYSTEMS, SURFACE PAVEMENTS, FIXTURES, STRUCTURES, AND/OR EXISTING TREES OR LANDSCAPING THAT ARE NOT SPECIFICALLY INDICATED TO BE REMOVED OR RELOCATED AS PART OF THE PROJECT CONSTRUCTION. IN THE EVENT THAT ANY EXISTING DRAINAGE STRUCTURES OR UTILITIES ARE DAMAGED AND THE SERVICES DISRUPTED, THE LINES SHALL BE IMMEDIATELY REPAIRED AND THE SERVICES RESTORED AS DIRECTED BY THE LANDSCAPE ARCHITECT.
9. SHADE STRUCTURE LOCATIONS INDICATED ON THE PLANS ARE APPROXIMATE. THE CONTRACTOR SHALL COORDINATE FINAL SHADE STRUCTURE LOCATIONS WITH THE CITY OF ROCHESTER HILLS AND/OR THE ENGINEER PRIOR TO CONSTRUCTION. NO CONSTRUCTION OPERATIONS SHALL COMMENCE UNTIL FINAL LOCATIONS ARE APPROVED BY THE CITY OF ROCHESTER HILLS.
10. ALL EFFORTS SHALL BE MADE TO PROTECT ALL DECORATIVE CONCRETE ADJACENT TO THE SHADE STRUCTURE FOOTING LOCATIONS. PROTECTIVE MEASURES SHALL BE MAINTAINED THROUGH THE DURATION OF CONSTRUCTION ACTIVITIES.
11. CONTRACTOR SHALL TAKE CARE TO AVOID CONTACT WITH EXISTING DECORATIVE OVERHEAD LIGHTING DURING CONSTRUCTION ACTIVITIES. CONTRACTOR SHALL COORDINATE WITH THE ENGINEER PRIOR TO CONSTRUCTION IF CONFLICT WITH THE LIGHTING IS UNAVOIDABLE.
12. CONTRACTOR SHALL REPAIR ALL CONCRETE PAVING DAMAGED AS A RESULT OF CONSTRUCTION ACTIVITIES TO ITS PRE-CONSTRUCTION CONDITION.

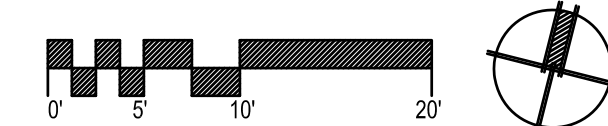


SHADE STRUCTURE (15' x 20') ELEVATION

SCALE: 1" = 5'-0"



SITE PLAN



Know what's below.
Call before you dig.