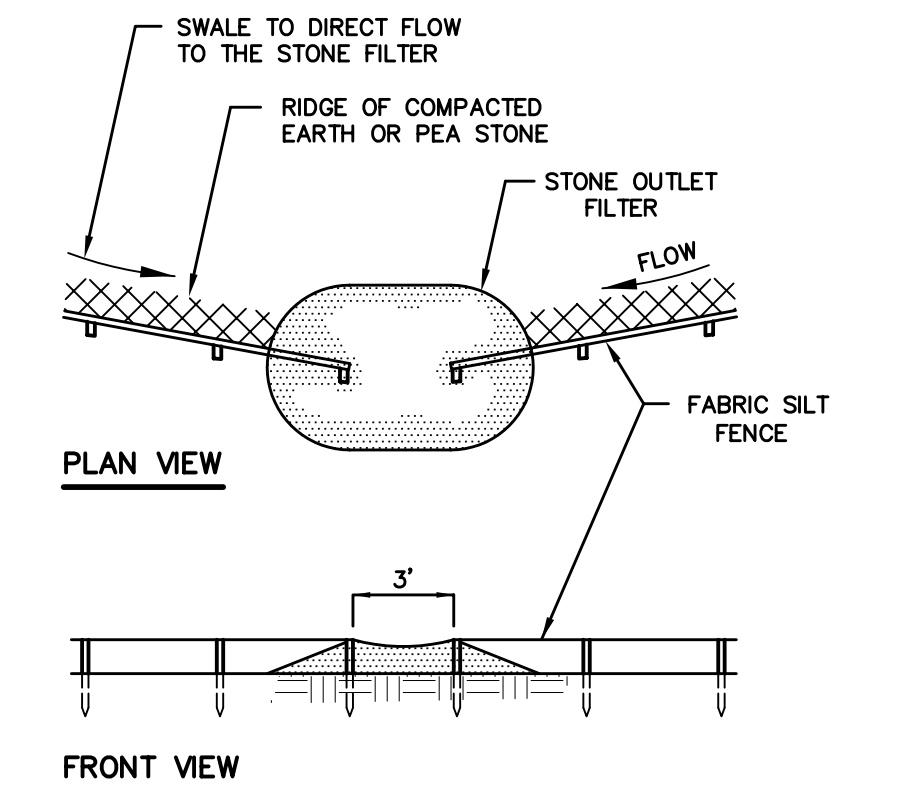


MAXIMUM CANDLEPOWER: 3054

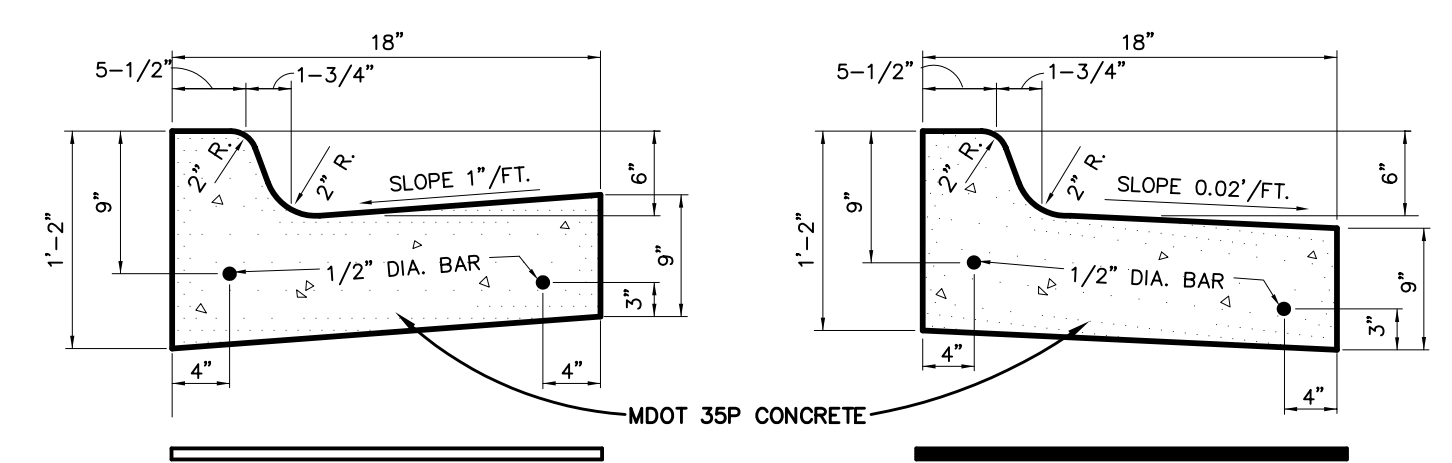
(A) DISTANCE FROM LIGHT POLE WHERE ILLUMINATION IS NOT MORE THAN ONE FOOTCANDLE: 24'2"

(B) DISTANCE FROM LIGHTPOLE WHERE THERE IS NO ILLUMINATION: 71'-10"

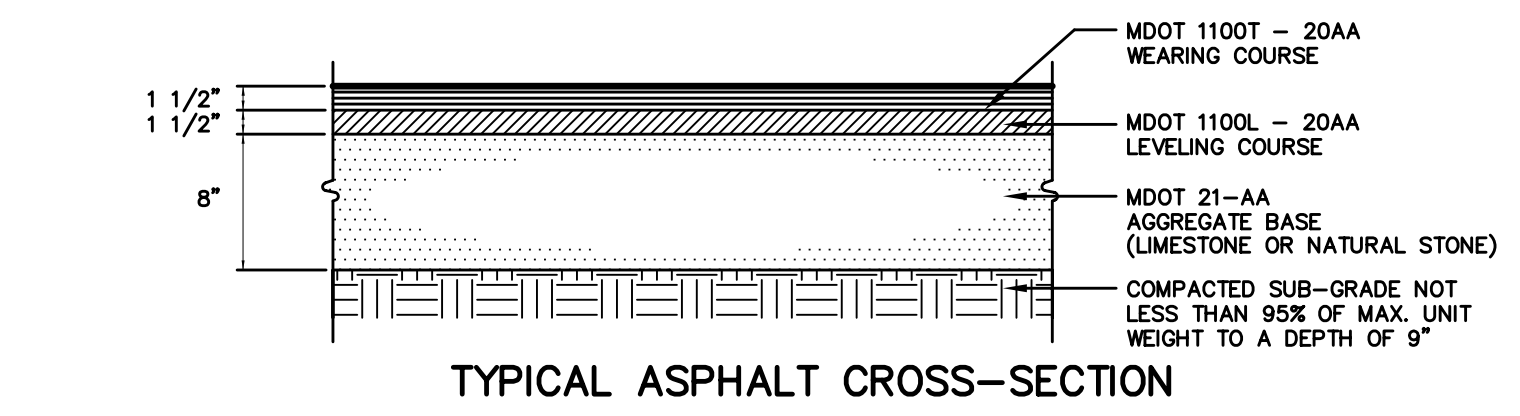
LIGHTING AND LUMINANCE PLAN PROVIDED BY OWNER



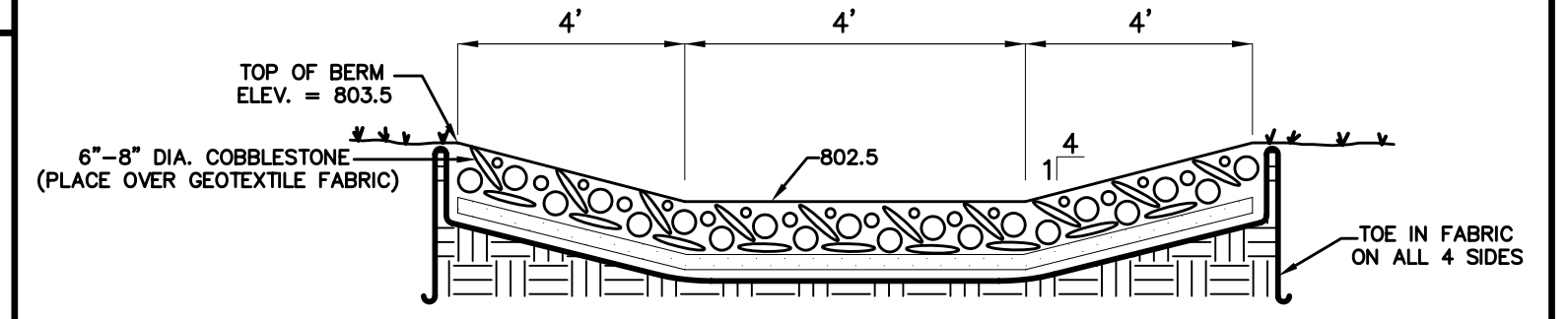
STONE FILTER OUTLET



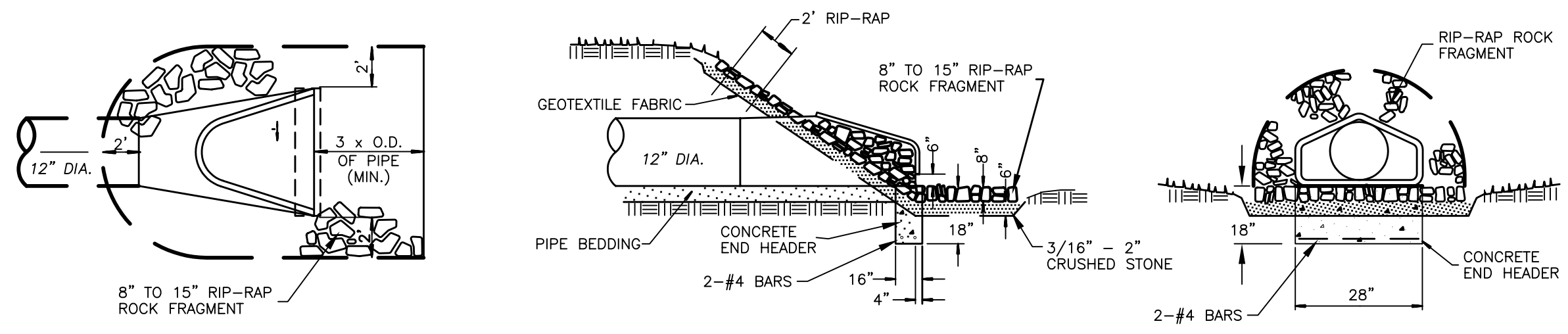
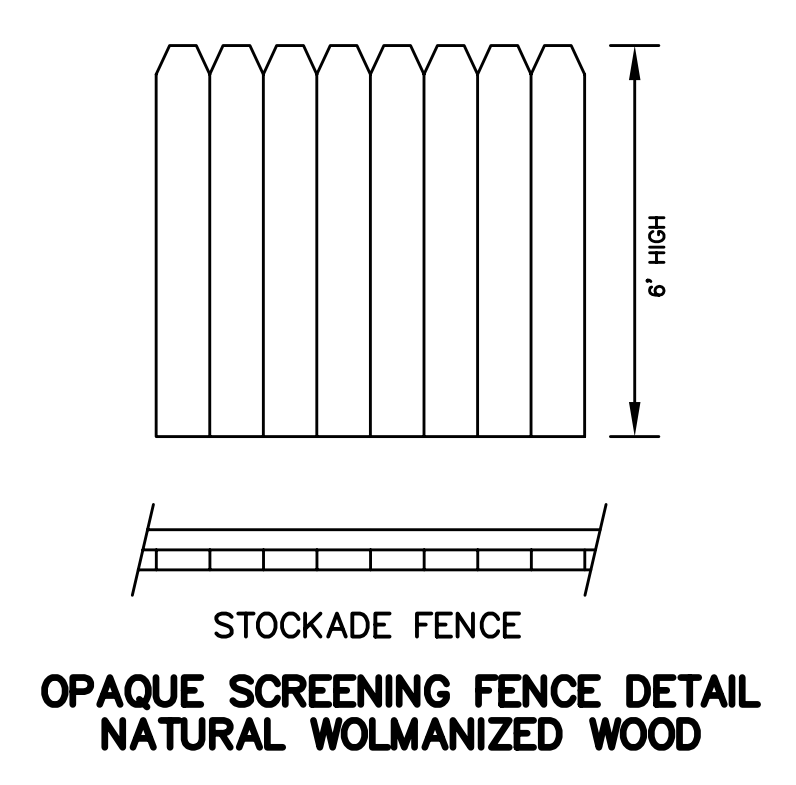
M.D.O.T. F-2 STRAIGHT FACE CONCRETE CURB AND GUTTER



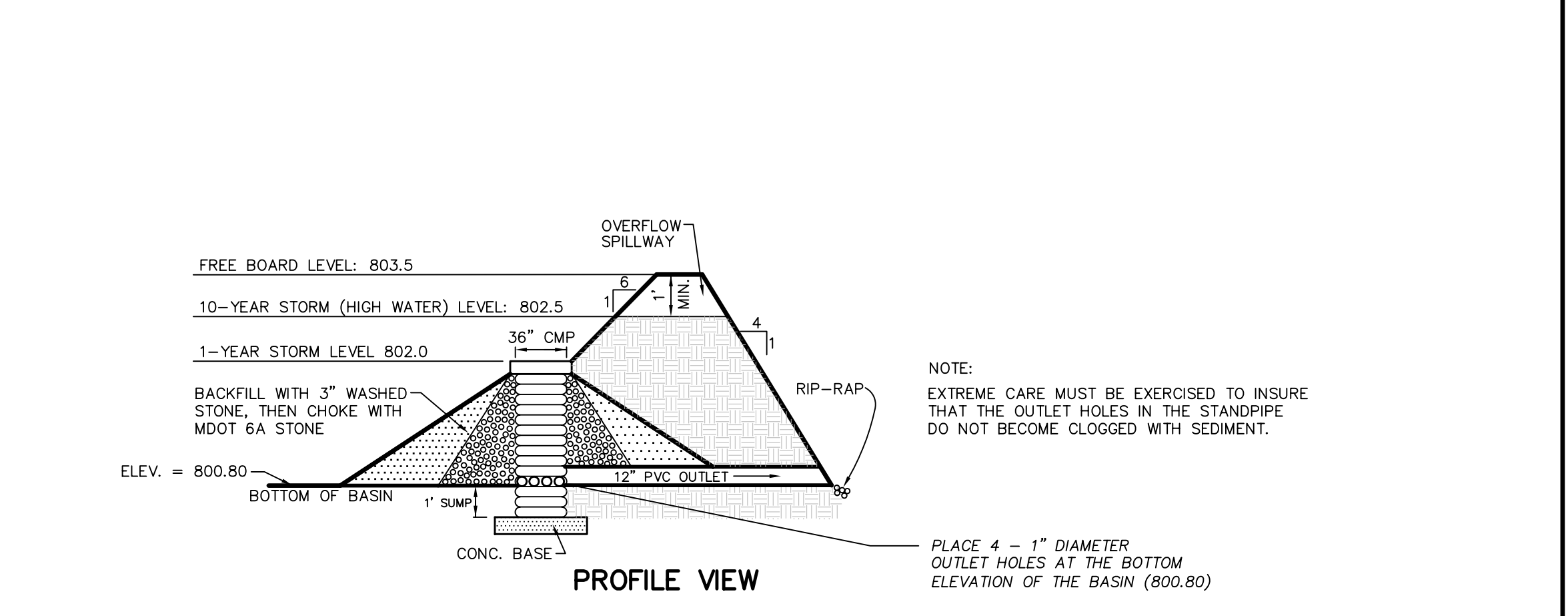
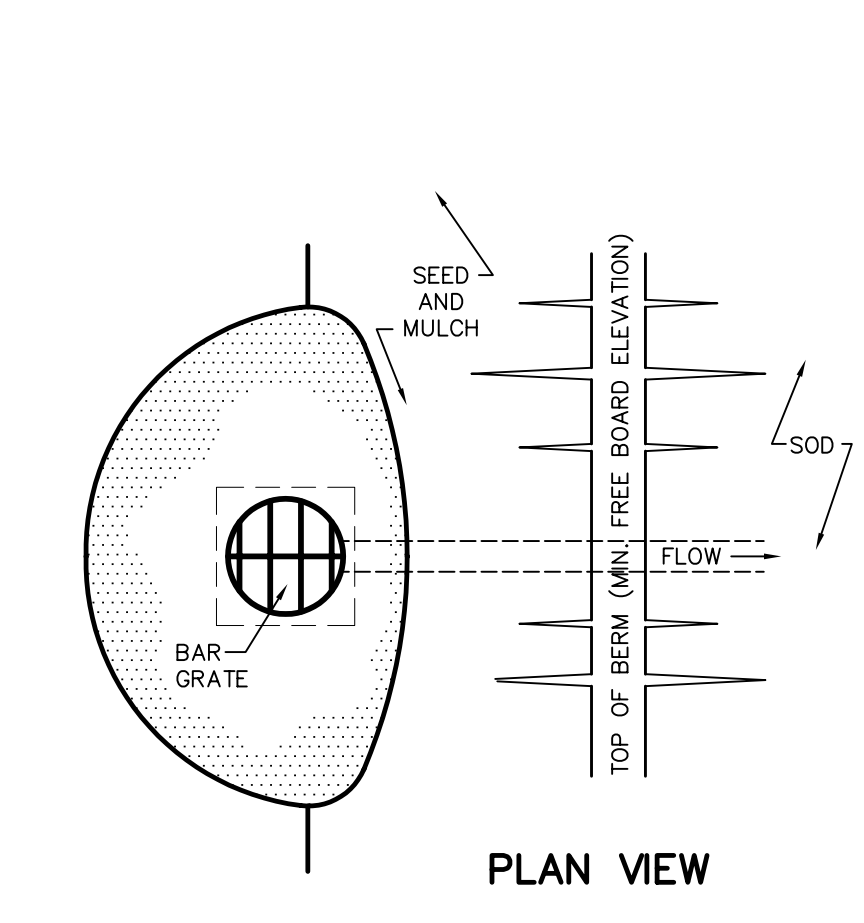
TYPICAL ASPHALT CROSS-SECTION



OVERFLOW SPILLWAY (NOT TO SCALE)

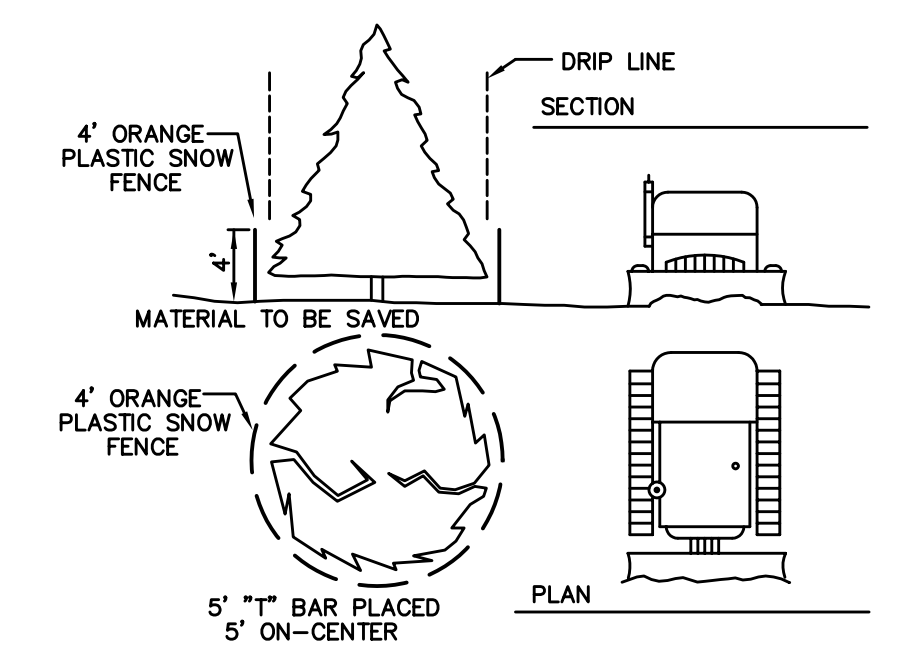


CONCRETE END SECTION RIP RAP & FOOTING DETAIL

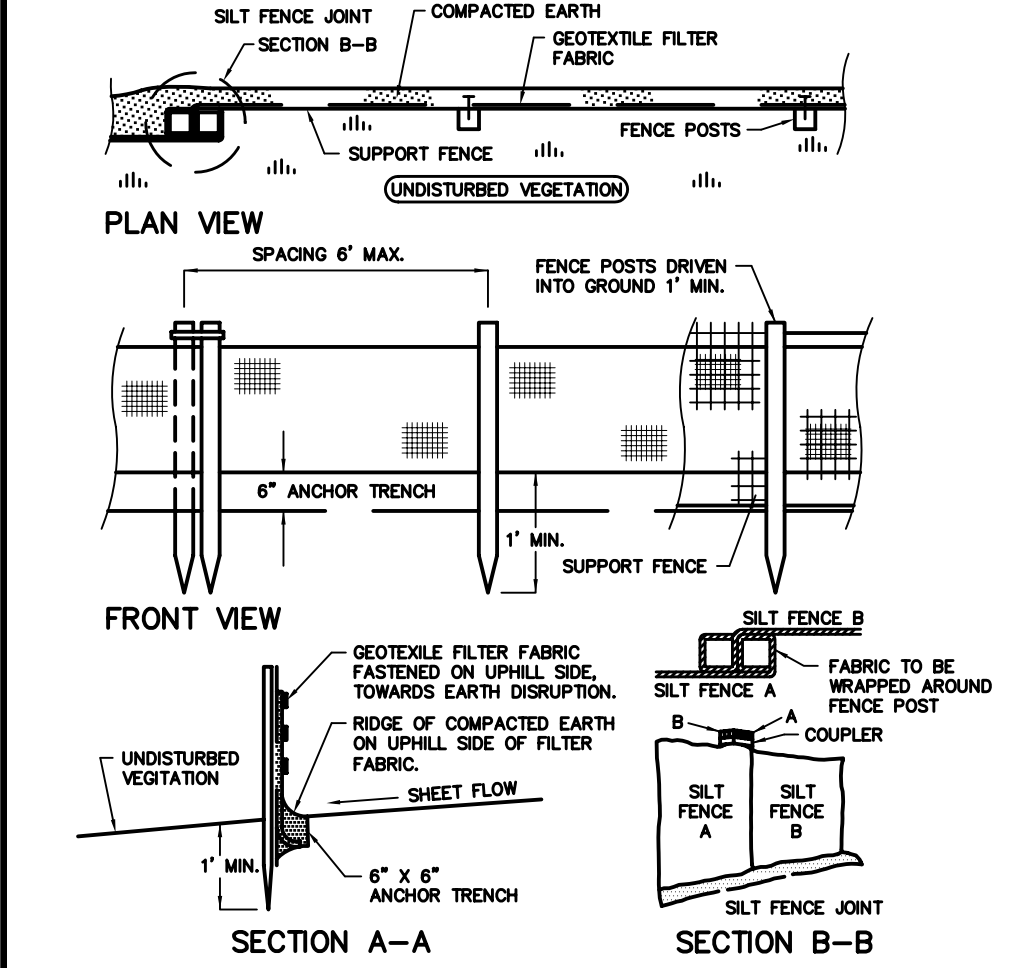


DETENTION BASIN SEDIMENT FILTER DETAIL

MATERIAL TO BE SAVED 4' HIGH ORANGE PLASTIC SNOW FENCE TO BE INSTALLED AROUND DRIP LINE OF TREES TO BE SAVED PRIOR TO ANY LAND CLEARING OR CONSTRUCTION. NO CUTTING, FILLING OR TRESPASSING SHALL OCCUR INSIDE FENCED AREAS.



SNOW FENCE TREE PROTECTION DETAIL



FABRIC SILT FENCE

1812 OFFICE PARK
SECTION 22, TOWN 3 NORTH, RANGE 11 EAST
CITY OF ROCHESTER HILLS, OAKLAND COUNTY, MICHIGAN

REVISIONS		ENGINEER'S SEAL
NO.	ITEM	DATE
1.	REVISED PER OWNER	08-24-04
2.	REVISED PER CITY REVIEW	07-12-04
3.	REVISED PER CITY REVIEW	07-30-04
4.	REVISED PER CITY REVIEW	08-11-04

DATE: 09-11-02
DESIGNED BY: RGP
CHECKED BY: GWN

JOB NUMBER: 02-065

DETAIL SHEET

SEIBER, KEAST & ASSOCIATES, INC.
CONSULTING ENGINEERS

MILLETICS AND ASSOCIATES
LAND SURVEYORS

40399 GRAND RIVER AVENUE • SUITE 110 • NOV, MI • 48375-2123
248.473.7880

SHEET 2 OF 2